

# PANGBOURNE MAGAZINE

ISSUE 158    SEPTEMBER/OCTOBER 2020



Picture supplied by Alex Child:  
'Swampy' Pangbourne Meadows





# BREEDON PLACE PANGBOURNE



## DARE TO DREAM

LAST CHANCE TO BUY AT BREEDON PLACE

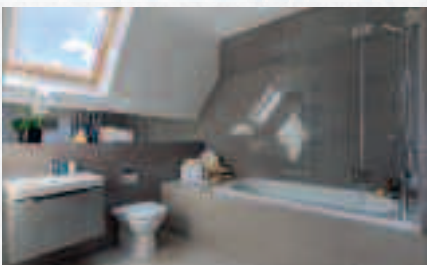


Perfectly placed and with exceptional views of the surrounding countryside, discover an elegant and sophisticated collection of 3, 4 and 5 bedroom homes nestled in the ancient and charming village of Pangbourne.

**PRICES FROM £599,950**

### HELP TO BUY AVAILABLE.

HERE'S HOW YOUR IDEAL NEW HOME COULD BE YOURS\*



**YOUR DEPOSIT JUST**  
**5%**  
**£31,250**

**+**

**INTEREST FREE LOAN**  
**20%**  
**£125,000**

**+**

**MORTGAGE LENDERS**  
**75%**  
**£468,750**

**100%  
YOUR  
DREAM  
HOME**  
**£625,000**

Visit our website [breedonplacebymillgate.co.uk](https://breedonplacebymillgate.co.uk)  
for more photos and a virtual tour of our show homes!

Breedon Place, Pangbourne Hill,  
Pangbourne, Berkshire RG8 7FY



Backed by  
HM Government



**MILLGATE**

Part of the Countryside Group

Computer generated image of street scene, indicative only. Interior photography of existing show home at Breedon Place. Prices correct at time of press. \*YOUR HOME MAY BE REPOSSESSED IF YOU DO NOT KEEP UP REPAYMENTS ON YOUR MORTGAGE. 20% loan is interest free for the first 5 years. 5% deposit is applicable with the Government's Help to Buy scheme. Selected plots only. Buyer will need to have sufficient funds to pay legal and sundry costs. Equity deposit percentage may be subject to lender's and Government criteria. Prospective buyers should always seek independent financial advice before proceeding. Millgate works with a number of independent financial advisers who are able to provide appropriate advice. Millgate Properties terms and conditions apply. Subject to status. See our website for full details. Information correct at time of distribution.

## CONTENTS

Local News .....	4	Pangbourne Place-Names .....	40
Church News .....	12	Environmental News .....	43
Local Clubs .....	19	Council News .....	44
Pangbourne Primary School .....	28	Useful Numbers .....	50
Pangbourne College .....	29	Pangbourne Magazine Information .....	50
Crossword .....	34	Classified Ads .....	51
Focus on Pangbourne River Meadows .....	35		

## IMPORTANT LOCAL TRAVEL UPDATES

As the world slowly begins to move to the next phase of the pandemic and all being well, children return to school in September, there are a number of important travel updates listed below which may well have an impact on your daily routines.

This is the latest information provided to Pangbourne Parish Council at the time of writing (August 11th 2020) but as we all know, things are subject to rapid change.

**PLEASE DO CHECK THE LINKS BELOW FOR THE MOST UP TO DATE INFORMATION AND USE THE BELOW AS A GUIDE ONLY.**

### ROADS

#### **Urgent gas mains replacement SGN (Southern Gas Network) – Whitchurch Hill B471, Whitchurch – planned road closure**

From the 27th July to 21st September 2020, SGN will commence a programme of work to replace the gas main on Whitchurch Hill B471 from the junction of High Street to just short of the junction of Goring Heath Road. The gas main being replaced has a history of leaks. This essential work has been given priority to ensure network integrity. The work will be a mixture of work under traffic lights and likely road closure on the B471 at the junction of Hartslock Bridleway to the junction of B471 and Lower Hitch between August 24th and September 21st. Please see SGN's website for the latest full details. A signed diversion will be in place for vehicles as there will be no through access for vehicles for the duration of the closure. Pedestrian and cycle access will be maintained, access arrangements will be in place for residents/properties located within the closure, those impacted will be informed in advance of local arrangements.

There will be no planned interruptions to local gas supplies whilst work is completed other than those previously contacted. SGN appreciate the nature of work especially road closures are disruptive, and understand that this work comes at a time when businesses are trying to return to some normality following the lockdown of COVID.

If you'd like to get in touch with SGN about this project, please call their Customer Service team on 0800 912 1700 who will be happy to direct your enquiry. Please accept our apologies in advance for any inconvenience this essential work may cause.

<https://www.sgn.co.uk/our-gas-works/roadworks-your-area>

#### **M4 resurfacing works**

Weekend closures have been scheduled for the following dates, but are subject to change:

**PLEASE CHECK ONLINE FOR THE LATEST CORRECT DATES – THIS IS A GUIDE – DATES SUBJECT TO CHANGE**

Friday 4 to Monday 7 September – M4 westbound between junction 13 and junction 14

Friday 11 to Monday 14 September – M4 eastbound between junction 15 and junction 14

Friday 2 to Monday 5 October – M4 eastbound between junction 13 and junction 12

(CONT'D ON PAGE 4) ➡

>> Significant delays are expected during these weekend closures. We advise you to plan your journey and allow extra time or avoid this route if possible. Please be aware that all works are subject to change – confirmed dates/timings for all closures will be displayed in advance on large yellow signs alongside the M4. We would like to apologise in advance for any inconvenience or disruption during our work. If you have any questions, or if you'd like you know more about our work please email us at [info@highwaysengland.co.uk](mailto:info@highwaysengland.co.uk) or call us on 0300 123 5000. Alternatively, to view our weekly report of full closures please visit <https://highwaysengland.co.uk/roads>, scroll down and under Roadworks click on 'Check for Roadworks', then scroll down and under Planned full closures click on 'Check for Roadworks' (this will open a Microsoft Excel file that will allow you to filter by day and road).

## RAIL

As the country moves into the next stage of its coronavirus response, public transport will continue to play an important role. The 'Let's travel safely this summer' pledge highlights the extra steps GWR have taken to make journeys safe from coronavirus.

Customers are asked to: **Plan ahead** – travel at quieter times, buy tickets online in advance, and book ahead if you need assistance; **Consider others** – wear a face covering unless you're exempt, not travelling if you have Covid symptoms and consider others, not all disabilities can be seen; and **Stay safe** – maintaining distance wherever possible; washing hands, carry hand sanitiser, paying contactless where you can.

Trains are likely to be increasingly busy, with the re-introduction of a significant number of services to cater for this increasing demand, both for local and long-distance travellers, as well as continuing to operate a 'counted places' system to restrict the number of reservations available on any one train.

GWR can see the pandemic has changed our customer landscape. For now, many businesses have accepted the new normal and far more people will continue to choose to work from home and will want more flexible tickets to marry with this.

Adapting to this change, GWR have proposed two new products to the Department for Transport; a three-in-seven and a 12-in-28 day season ticket, which, along with other proposals, they hope to be able to take forward.

PLEASE SEE GWR website for latest details.



## 60TH WEDDING ANNIVERSARY

On July 9th my wife Pam and myself celebrated our 60th wedding anniversary with a card from Buckingham Palace.

I met Pam in 1958 at a dance at the "Guards Depot", Caterham, Surrey where I was serving as a Squad Instructor.

In 1961 we moved to my parents home in Purley. A year later moving to Pangbourne where we still live.

We have two daughters, four grandchildren and two great-grandchildren all living in the area.

*Ian Nash*



## PANGBOURNE VILLAGE MARKET

As many of you will know we reopened on a Saturday in the village hall car park 9.30am to 11.30am weekly as soon as the government said that open air markets could resume. We have been selling home grown vegetables, local soft fruit, preserves, eggs, honey, home made cakes, ladies clothes, plants, puzzles and books.

Our customers have been glad to see some semblance of a return to normal. We have been careful to observe social distancing and provide hand sanitizer. We will

continue to hold the market outside on Saturdays until the weather gets too cold. If by then indoor markets are allowed and the village hall reopens we will return to our usual market on every Friday. We do hope to keep the market running but we are at the mercy of government edicts and the weather.

I would like to give a special thank you to June for all her help and to our loyal customers for their support.

Thank you.



Dear Editor

We would like to add our thanks to the many others who have appreciated help given them during the pandemic. We are aware that by the time this article is published, March may seem a long time ago, but we will always remember the very prompt action taken by neighbours of ours. As soon as lockdown began they offered to help anyone in our road. As I was shielding, and my husband consequently also self-isolating, we weren't allowed out of the house at all. Carrie and Iain shopped, fetched and waited for prescriptions, and posted letters, all in a gracious and friendly way.

We have many friends and neighbours in Pangbourne, some of whom are still helping us now, but we didn't know Carrie and Iain before this. We believe they are fairly new to Pangbourne, and are very thankful that they have entered so wholeheartedly into the life of the village. We wish them and their daughter well.

Yours faithfully

Linda and Alan Clargo

Dear Editor

As a resident of Pangbourne I feel blessed to live in such a beautiful and community-minded village. However, the past few months, with all its challenges, have certainly highlighted the best and worst in people. The best being the way our village has gathered around each other to ensure that those who have needed help and support during the COVID pandemic have received it through the wonderful network of volunteers. But sadly we've also seen some rather anti-social behaviour, not least the piles of rubbish left on the river meadows and recreation ground, and the increasing amount of dog poo that is once again appearing on our pavements and play areas.

I wonder whether when people casually walk away from their rubbish, they stop to consider the consequences of their inaction? Do they think about who clears it up, who pays to clear it up and what else that money could better be used for in our society? Then there's the waste that before it can be cleared up is blown into the river and hedgerows; what irreparable harm will it cause wildlife and ultimately humans? And what about the horror experienced when someone walks through dog poo or even worse the risk to health when a kid gets it on their hands after their football has rolled through it?

For the good of our village and society as a whole surely it is incumbent upon each of us to have a social conscience and dispose of our own rubbish, whether it be a plastic bottle or dog poo, in a responsible way.

Yours faithfully

Vanessa Saunders

Pangbourne Parish Council wholeheartedly agree with these comments. It is so sad to see the litter and thoughtless behaviour happening not just in Pangbourne but across the country at a time when there is otherwise so much community spirit.

Attempting to keep the Meadows and Recreation Ground clean and nice for residents to enjoy has been a thankless and never ending task since March.

It is thanks to our team of Volunteer Litter Pickers, Thames Avenue residents and local dog walkers, Councillors and in particular local resident June Hughes and Alise our Open Spaces Warden that these spaces miraculously start the new day afresh and clear of the remnants of the day /night before.

Their amazing efforts over many months now run the risk of going largely unrecognised, as by the time even the earliest of paddle boarders arrive they have already dealt with the mess and restored order. No volunteers or members of staff should have to deal with that day in day out particularly during a world pandemic. You bring the mess, You take it home. Its not so difficult is it?

Thanks go to all local residents who pick up litter when they see it and who use these areas responsibly, it is a shame that it is not universally the case and that the few spoil these areas for the many. It is not solely our teenagers either, on occasion large packaging for £300+ canoes and champagne bottles, prams and other items have been abandoned for others to clear. I must just mention BBQs here as well as these are NOT permitted and not only do they litter and present a hazard but they also cause damage to the grass.

The Council have taken additional measures over the last few months, with bin collection frequency doubled, black sacks regularly handed out to groups of an evening and members of staff and councillors on hand on particularly busy days to supply, clear and replenish bags and empty bins.

We have liaised closely with the local Neighbourhood Police Team who have been regularly patrolling the entire stretch of river when they are able and who some may have seen undertook a mounted patrol at the end of July. They too have been engaging with groups regarding litter and behaviour and dispersing where necessary.





Recovery in Mind offers free of charge courses to any adults living in West Berkshire with mental health difficulties.

Throughout lockdown we have continued to offer support through weekly newsletters emailed student's as well as having an active presence on social media, The Newbury Weekly News and Kennet Radio. We were fortunate to have Clare Balding presenting a piece on being kind to yourself and others. The newsletter themes have included; Learning the skills of self-compassion, Giving, Being Active, Keep Learning, Resilience and will continue to do this over the summer weeks.

In June we 'virtually' celebrated our fourth birthday and are proud to say we've helped over 350 adults in West Berkshire since 2016. We have designed and delivered over 20 different courses and under normal circumstances we would be running more than 50 courses during the year.

So with the easing of lockdown we're now looking forward to how we can deliver and will remain fluid in our approach. Our founder, Angela Ryan says; 'Covid-19 has had a significant impact on both people's physical and mental health. Come September we will be returning, offering adults in West Berkshire quality support to help them take back control and learn to live with their mental health challenges.'

Our free courses are split into 3 steps and all our venues and procedures will be risk assessed according to government guidelines, to ensure confidence and reassurance with all students:

#### STEP 1:

Over the coming months we will be offering a free online information film on our approach, with samples of our tools and techniques we use to help aid mental health challenges.

#### STEP 2:

If you enjoy the film and feel Recovery in Mind is for you then you can sign up to our free five week course which will begin in September. It will be in a safe environment in Newbury, following government guidelines and social distancing rules and hygiene.

#### STEP 3:

For the time being we're hoping to hold 'walk and talk' sessions. Being active and outdoors has huge benefits to our mental health, so we're hoping these will be a good alternative to our usual course layout.

Feedback is always positive so if it's time for you to give some time and space to improve your mental health then Recovery in Mind is ready and waiting.

Visit our website today and sign up for the film to see if our approach to helping mental health challenges is for you: [recoveryinmind.org](http://recoveryinmind.org).

**Nino's**  
TRATTORIA ITALIANA

FORTY YEARS 1978-2018

*We are back!*

*Dine in, takeaway and shop*

We've made a lot of changes to keep our customers safe including screens, new cleaning procedures and reduced capacity. We cannot wait to welcome back as many of you as possible to the new Nino's!

*(Reduced days/hours – see website/shop for up to date information in the coming months.)*



Tel: 0118 984 1333  
[nino@ninos-trattoria.co.uk](mailto:nino@ninos-trattoria.co.uk)



*At the start with support crew*

## LOCAL TEENS TAKE ON CHARITY CYCLE CHALLENGE

On the afternoon of Friday 7 August, local teenagers Rory Hogan and Ed Batten completed an epic three-day cycle challenge that saw them cycle 351km in three days while climbing 3,785m (the equivalent of three trips up Ben Nevis) on some of the hottest summer days this year.

Rory, a student at Pangbourne College, explained why: "Ed and I were talking about needing a challenge this summer, and we had both taken up cycling to keep fit during lockdown. We'd never taken on any distance this big, so the idea for this challenge was exciting and daunting at the same time."

The boys started from the Parade Ground at Pangbourne College, knowing that they would have to cycle to Wells in Somerset on day one, Exeter on day two, and reach Padstow (where their families were waiting) on day three. A support car was manned by their sisters, Tara (also a Pangbourne College student) and Amy.

Says Rory: "We decided that we wanted to do this to help raise funds for two great causes. First, the RNLI, an organisation supported entirely by fundraising and which we know will be incredibly busy this summer with so many people going to UK beaches. Secondly, we are both involved with the HUGE Partnership, a UK charity which provides free access to education for needy children in Uganda by running a primary school called the Nabugabo Community Learning Centre. The HUGE Partnership is also supported by Pangbourne College, who as well as financial donations have visited twice. So, it made sense for us to start our ride at the College."

As this article went to press, the duo were nearly at their goal of raising £5,000, having raised an incredible £4,794 through a 'Pangbourne to Padstow' online giving page.



*The finish line.*

## MAKEABILITY BACK ON THE CASE!

Remap Berkshire is once again able to design and make free bespoke gadgets and equipment for anyone in the Pangbourne area with a disability or special need where nothing suitable is otherwise available commercially. As ever, there is no charge and no tedious forms to fill in – i.e. no extra load on users, referring professionals or charities.

The service has now been re-started after pausing during the lockdown. Remap's MakeAbility volunteer engineers are back at work, whilst adhering to strict Covid guidelines.

Amongst the assignments completed before lockdown were:

- A retractable wheelchair ramp allowing access from pavement into home;
- A moveable rope gangplank-hand-rail for a stroke victim living on a narrowboat;
- A retractable bracket for a wheelchair controller;
- A standard bath seat adapted to fit a narrow bath
- plus several of the ever-useful long-reach window openers and security-bottle-top openers.

This BBC news item also describes what Remap Berkshire can do:  
<https://www.youtube.com/watch?v=H8tmxYSeHPE>.

You can contact Remap Berkshire's MakeAbilityservice directly via email at [Berks.CaseOfficer@remapgroups.org.uk](mailto:Berks.CaseOfficer@remapgroups.org.uk) or by telephoning 07790 127123. For further information please visit [www.berkshire.remap.org.uk](http://www.berkshire.remap.org.uk).



One job by Remap Berkshire, completed recently. An ingenious moving recliner-style seat and supporting frame which allows a young person with cerebral palsy to take a shower without his carers risking serious back damage lifting him in and out. Standard hoists were unsuitable for the bathroom. Remap Berkshire MakeAbility volunteer engineer Andrew Roberts of Wokingham designed and built the gadget – adapting some ready-made components and creating others from scratch – working closely with the patient's family and occupational therapist over many months.

*(Remap was founded in 1964, Registered Charity No 1137666)*



# Pangbourne Club

NEW  
MEMBERS  
WELCOME



## Facilities

- Air Con throughout
- 3 full size snooker tables
- Pool Table
- 2, 2mx2m projector screens and large TV's
- BT Sports
- Conference Facilities
- Function Room for hire with kitchen facilities and licenced bar

## Entertainment

- Live Entertainment every second saturday of the month
- Bingo every Thursday evening
- Jazz 1st Sunday evening of every month (fee applies)
- Regular exercise classes
- Weekly raffles

LOWEST  
DRINK  
PRICES  
IN THE  
VILLAGE



## Teams

- Crib teams
- Snooker Teams
- Table Tennis



## Objectives

PWMC is run as a non-profit making organisation by its members through an elected committee, which provides a social facility for residents of Pangbourne, the surrounding area and for people working in the village.

## Pangbourne Club

Rosewood Hall, Whitchurch Rd, Pangbourne, Reading, RG8 7BS

t: 0118 9842885

e: [info@pangbourneclub.co.uk](mailto:info@pangbourneclub.co.uk)

Visit us on Facebook

[www.pangbourneclub.co.uk](http://www.pangbourneclub.co.uk)





Thank you for your continued support of local independent business during this uncertain time. We're open and ready to serve you with all the BBQ essentials.



[greensofpangbourne.com](http://greensofpangbourne.com) 0118 9842063



GoPButchers



GreensOfPangbourne



**WEST BERKSHIRE  
BREWERY**

**HELP KEEP THE BEER  
FLOWING & SUPPORT  
YOUR LOCAL BREWERY**

Crowdfunding coming soon – own a slice of WBB

Register interest at:  
[westberkshirebrewery.seedsr.com](http://westberkshirebrewery.seedsr.com)



Seed&Spark is a not-for-profit crowdfunding platform. This is not a financial product. Seed&Spark is a registered charity (1135768) and a limited liability company (10404040). Seed&Spark is authorised and regulated by the Financial Conduct Authority.

**SEEDS**



**T H E M I L L**  
S O N N I N G

**RESTAURANT NOW OPEN!**



Our beautiful restaurant is **now open and taking bookings** with a delicious **À la carte menu (NO BUFFET)**

But don't worry, the famous Steak Pie is still on the menu in case of withdrawal symptoms!!

**Our special À la carte menu is available every Wednesday - Saturday evening from 6.30pm and for Sunday lunch from 12.30pm.**

**The Waterwheel Bar will also be open every Wednesday - Sunday from 11am - 5pm for bar food, coffee and cake. (Coffee and cake only on Sundays)**

**TO SECURE YOUR TABLE, PLEASE CALL  
(0118) 969 6039 OR VISIT [millatsonning.com](http://millatsonning.com)**

# Woodborough HOUSE

AWARD-WINNING DENTAL PRACTICE  
OFFERING AWARD-WINNING EXPERTISE IN DENTAL  
IMPLANTS WITH OUR HIGHLY-REGARDED TEAM AND  
OUR SPECIALIST PROSTHODONTIST, DR NICK FAHEY.

WINNER: PRIVATE DENTISTRY AWARDS '16  
BEST HIGH TECHNOLOGY PRACTICE

★  
WINNER: PRIVATE DENTISTRY AWARDS '13  
BEST IMPLANT PRACTICE

★  
WINNER: SMILE AWARDS '12  
BEST MULTIPLE IMPLANT AWARD

★  
TAKE THE FIRST STEP TO A CONFIDENT SMILE

CALL US TODAY ON:

☎ 0118 984 3108

WWW.WOODBOROUGHHOUSE.COM

## SMILE WITH CONFIDENCE



LIFE'S JOURNEYS  
SHOULDN'T BE  
INTERRUPTED.

DISCOVER DENTAL  
IMPLANTS FOR A PERMANENT  
ALTERNATIVE TO DENTURES AND  
MISSING TEETH



Anti-Pollution Makeup  
(Eyebrows, Eyeliner,  
Lips)

Micro-needling  
Dermaplaning | Skin Peels  
Micro-needling

Skincare Treatments  
(Acne, Blemishes, Dark  
Spots, Redness)



Local Salon | Free Parking | Free Consultation  
Weekend & Evening Appointments

Contact us  
0118-974-4471



www.kjcosmetics.co.uk  
kate@kjcosmetics.co.uk

Hewitts Wood Farm  
Brookfield, RG7 4DT



The Boathouse Surgery  
Whitchurch Road  
Pangbourne  
RG8 7DP

## WOMEN'S HEALTH PHYSIOTHERAPY



- Rehabilitation of urine leakage, urgency, prolapse, short and long term pelvic pain
- Pre and post Womens health operations
- Pre and post-natal advice and treatment
- Mummy MOT - specialist post-natal assessment from 6 weeks following delivery
- Pre-menopausal, menopausal and post-menopausal conditions and symptoms
- Sexual related problems

Contact us for advice today:

☎ 0118 976 7189

✉ boathouse.physio@nhs.net

🌐 www.boathousephysiotherapy.co.uk





# Berkshire's Exclusive Skin Health & Laser Clinic

## Radiant skin, the natural way...

... can be yours with our non-surgical laser facelift and bespoke skin health programs, uniquely developed using science and technology from around the world.

As a specialist laser and skin clinic, we are here to help you.

- Non-surgical laser face & neck lifting
- Acne & rosacea specialists
- Pain-free laser hair removal
- Wrinkle & skin remodelling
- Tattoo removal
- Emsella for incontinence
- Pelvic floor rehabilitation
- Non-surgical blepharoplasty



**Andresa Aesthetics Exclusive Skin Health & Laser Clinic**  
Tel: 01635 800183 | [info@andresa.co.uk](mailto:info@andresa.co.uk) | [www.andresa.co.uk](http://www.andresa.co.uk)  
Lower Wasing Barn, Wasing Lane, Nr Woolhampton RG7 4LY



You're not normal. No one is. We are all different and we're all wonderfully unique.

At The Movement Clinic we pride ourselves on helping everyone, young and old, find a way to move more and feel better.

We don't do gimmicks or mysterious gadgets, we don't make outrageous claims, we don't offer quick-fix promises, fad diets, or celebrity exercise regimes.

We rely on decades of collective experience and expertise to establish what works for you.

So whether you're injured, in pain, stressed, overweight or just tired of doing the same thing over and over again and getting the same disappointing results, give us a call and find out how we can help.

Personal Coaching • Weight Loss • Strength & Conditioning • Running Technique • Injury Prevention & Rehabilitation  
Corrective Exercise • Physio-led Pilates • Specialist Pilates for People with Mobility Issues • Yoga • Massage • Injury Treatment  
Strapping & Taping • Neurological Physiotherapy for Adults and Children

[www.themovementclinic.co.uk](http://www.themovementclinic.co.uk) • 0118 327 9405 • [info@themovementclinic.co.uk](mailto:info@themovementclinic.co.uk)

## THE PARISH OF PANGBOURNE WITH TIDMARSH AND SULHAM



A Christian presence in every community in 2020

### Services during September and October

We hope to be able to restart Sunday at Ten services in St James-the-Less, Pangbourne in September with a special Harvest service planned for Sunday 27th September.

Due to these uncertain times services are subject to change at short notice. To keep up-to-date with where and when worship will take place please check our website or the church noticeboard for any changes.



St James remains open for private prayer from Tuesday to Saturday, 9am to 2pm.

### Annual Parochial Church Meetings – September 2020

1. The meeting to Elect Churchwardens by Parishioners – 3 vacancies
2. The meeting of Electoral Roll members to receive the Annual Report and elect Parochial Church Council Members – 7 vacancies and Deanery Synod members – 2 vacancies

Due to the current COVID pandemic these meetings will be held via Zoom in September. The exact date will be confirmed at the start of September and details will be publicised on the Pangbourne Churches website.

**[www.pangbournechurches.org](http://www.pangbournechurches.org)**

---

## REVEREND HEATHER PARBURY

Reverend Heather has been the Priest in Charge and then the Rector for our Parish of Pangbourne with Tidmarsh and Sulham for just over 12 years. Sadly this month we shall be saying goodbye to her and Philip as they move to Brailes in the Coventry diocese, Heather to take up a part-time post. Heather, with massive support from Philip, has worked hard for our three churches in this parish and I am sure many of you have reason to be thankful for her ministry, be it for regular services or in times of joy or great sadness when she has baptised children, lead large services like Remembrance Day and conducted weddings and funerals. She and Philip are very much part of our local community and have contributed their time, not just to the churches, but

in many other ways helping residents, helping at events and supporting local charities and causes.

Heather's departure means that we shall have a vacancy for some time and during that period please address any queries to our Parish Administrator, email [office.ptschurches@gmail.com](mailto:office.ptschurches@gmail.com) or contact Jill Palfrey, Churchwarden, on 0118 984 2698 or 07721 614686, email [jill.palfrey1@btinternet.com](mailto:jill.palfrey1@btinternet.com)

Our thanks, love and prayers go with Heather and Philip as they embark on this new chapter in their working and family life.

*Jill and Julia – Churchwardens*



A Letter from Reverend Heather Parbury as she leaves to take a pre-retirement post in Coventry Diocese . . .

*The Rectory, Pangbourne  
August 2020*

Dear Friends and Neighbours,

*It is with both sadness and gratitude in my heart that I write this, which is likely to be my final letter to the parish of Pangbourne with Tidmarsh and Sulham as your rector.*

*Philip and I have lived here for over twelve years now, at first with two of our children still needing a family home, while I ministered to the three village communities and the wider parish which stretches from Wakemans in Upper Basildon, to Purley Rise and includes Maidenhatch and Bowden. Many members of our church congregations come from beyond the parish and some Christians who live in the parish travel to worship beyond but still need the parish church occasionally, so it has been both an interesting and complex ministry.*

*As I look back fondly there have been Christian and Community milestones which returned each year – until the strangeness of 2020 hit us. Each year brought us the early Spring Flowers with yummy cakes and Teas in Sulham Churchyard; the calm and steady Palm Sunday Donkey; Dawn round the brazier in the Easter Day Garden then breakfast in Pangbourne Village Hall; occasional May excitements with teddies parachuting from the top of the church tower, or a town twinning welcome to Houdan visitors; the Tea and Prayer tents at the Pangbourne Meadows Fete; the School children, rainbows, brownies and guides in the summer garden; the Pangbourne College students' and Scouts' community service work parties in the churchyards; the traditional Village fete on the Tidmarsh green or in a beautiful private garden; the start of the school year with assemblies in Englefield Church of England Primary School; and so to Autumn leading us to Christmas – via Harvest Thanksgivings; Remembering those who've died – with grieving relatives at All Souls and the British Legion on Remembrance Sunday; and then celebrating the birth of the Saviour Jesus Christ with so many of little faith and none magically attracted to join the people of faith at the end of the year; and so it all began again . . . until . . .*

*This year has been different!*

*We have not enjoyed the annual milestones of community life in the same way, but some things have not changed. Indeed, much has developed and grown stronger under the duress of the Covid-19 pandemic. Regular weekly Christian prayer and Sunday worship have become better attended as the faithful have gathered online via zoom. Neighbours have met and served each other in ways we could only have imagined before 2020. Our key workers have been valued, thanked and celebrated as never before. Among the sadness there has been cause for thanksgiving.*

*And that is how I feel as I write.*

*Sadness at the sense of loss on moving away that inevitably accompanies saying 'Goodbye' to people and places I have come to know so well.*

*Gratitude to, and for, those with whom I have prayed to, worked for and worshipped our wonderful God, whether daily, weekly, monthly or once in a while – 'Thank You'. Together we have seen good things happening – Noah's Ark, Tuesday Teas, After School Club, people of all ages coming to faith and commitment, and the faithful answering the call to ministry in so many ways.*

*I would love to name names but there are so many of you to thank for your love, prayers and allowing me to work alongside you in our ministry here. How I wish we could have a great thanksgiving service in church! But our plans are not God's plans and he knows best.*

*We will be leaving families we have come to know at the most important times in their lives – you will automatically think of births, marriages and deaths which it is the privilege of the parish priest to accompany. 'Yes' to all of those, but also to the important times when people have come to realise God is actually there, Jesus really is alive, and the Holy Spirit can guide on a daily basis and the response is to worship him and love each other.*

*By the time you read this in September Philip and I will be packing up and moving on.*

*Perhaps one day you will be able to visit us at Brailes Vicarage in Warwickshire, just across the churchyard from St George's Church – I do hope some of you will find your way there when we can freely visit again.*

*It has been good to see so many of you on line on or out in the village this year but I am sorry I have not been able to come personally to homes and say a proper 'Good Bye'.*

*It is most sincerely meant in its original form – 'God Be with Ye' – to all who live in the Parish here as you rediscover, post pandemic, the parish church in the centre of your village life in whatever way it develops for your future in this lovely place, with my love and prayers,*

*Reverend Heather (Rector of Pangbourne with Tidmarsh and Sulham)*

*PS: A BIG Thank you for the beautiful Magnolia tree which I will try very hard to keep alive and flourishing to remind me of you all in PTS Church (and the many events associated with Churchyard of St James 🌸), and also for the generous gifts, good wishes and prayers for the future we have been receiving since taking my last service in August.*

## HAND-PAINTED ANIMAL PORTRAITS

*by Pangbourne-based Artist Robin Wang*



☎ 07567735515  
✉ robinwangart@gmail.com  
📷 robin\_animalportraits  
🌐 www.robinwangart.com

Why not have a custom portrait made of your beloved pet? I can paint your pet with Chinese watercolor. Send me a photo and I will take care of the rest. Different size options are available. For a quote please get in touch. You can see more of my work on my website and Instagram page.

## ATB Accounting

Old Breedon School, 8-10 Reading Road,  
Pangbourne RG8 7LY

**0118 405 6000**

### Services include:

Bookkeeping ..... from £18 p/h  
Ltd Co. Accounts ..... from £700 p/a  
VAT Returns ..... from £100 p/a  
Self Assessments ..... from £70 p/a

(ALL PRICES EXCLUDING VAT)

### *For a free quotation:*

Call us on 0118 405 6000,  
or call in – no appointment necessary,  
or email: [charles@atbaccounting.co.uk](mailto:charles@atbaccounting.co.uk)



# CIG.

Chiltern Insurance Group  
Pangbourne

Business and Personal Insurance  
from your Local Broker

**Call 0118 984 3355**

[www.chilterninsurance.co.uk](http://www.chilterninsurance.co.uk)

St James House, Church Road,  
Pangbourne, RG8 7AR

Chiltern Insurance Consultants Ltd are authorised and  
regulated by the Financial Conduct Authority  
for General Insurance Business.



## ST BERNADETTE'S CATHOLIC CHURCH

St Bernadette's Catholic Church in Horseshoe Road is part of the Woolhampton Parish and is served by the monks of Douai Abbey: the parish has three churches plus the Abbey Church itself. Once it became clear that the government were easing restrictions to allow places of worship to open again in July, many people across the parish became involved in plans to safely open the churches. We have opted for something of a phased opening as we all become used to 'the new normal'.

Initially two churches opened in July for individual prayer: the Abbey Church and St Bernadette's. As the priests for St Bernadette's live at the Abbey, members of the local congregation have agreed to act as stewards to enable the church to be opened for times of quiet prayer, and all the Covid secure measures to be in place. A growing number of parishioners, as well as visitors, have been visiting the church each Sunday afternoon.

We have now moved on to the next phase. The first Sunday Mass for St Bernadette's is planned for 23rd August. The new volunteer stewards (see photo) have met to go through all the safety measures in preparation for this first Mass. We gathered at the church – now rearranged to allow for a one-way system and social distancing. Although we wish to welcome people to Mass, it is necessary to restrict the numbers, so a booking system has been set up. Whilst we recognise

that this is only the first step and that it will be different from our usual experience on a Sunday morning, we are also pleased to be able to share the Eucharist together again as a parish community.

All details about Masses within the Woolhampton Parish can be found on the parish website (link below). This includes details of online services and how to book a place at St Bernadette's.

Lucy Gallagher  
[www.douaiparish.org.uk](http://www.douaiparish.org.uk)  
0118 971 5350



# neville & turner

## Village & Country Property Agents

### *Thinking of selling or letting?*

*Whether you require specific valuation and marketing advice or wish to discuss general property matters and requirements, please call us - we are here to help.*

T: 0118 984 1841 E: [post@neville-turner.co.uk](mailto:post@neville-turner.co.uk)

A: 2 High Street, Pangbourne, Berkshire RG8 7AB

W: [www.neville-turner.co.uk](http://www.neville-turner.co.uk)

The Boathouse  
Dental Surgery

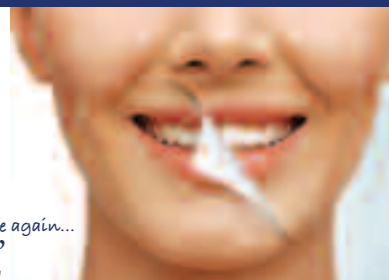
[www.boathousedental.co.uk](http://www.boathousedental.co.uk)

Tel: 01491 872394

Are you someone  
that hides **your** smile?

Let us **reveal** your smile.

"Never thought I'd smile again...  
...but now I can."  
Martin



High Street, Goring on Thames, Oxfordshire RG8 9AB

Email [reception@boathousedental.co.uk](mailto:reception@boathousedental.co.uk)

Call 01491 872394 to book a consultation

## Cosmetic & Laser Skin Clinic



- laser hair removal
- lines / wrinkles
- crows feet
- lip enhancement
- microdermabrasion
- skin tightening
- brown spots
- skin peels
- mole, cyst, skin tag
- tattoo removal
- facial / leg veins
- Vaser - fat removal
- eye lid surgery
- dermaroller
- underarm sweating
- acne

Professional, Caring and Confidential

Treatments for Men and Women

The  
**CHILTERN** *medical clinic*

Dr N. Munnelly Medical Director



60 Broad Street • Reading • RG1 2AF  
1 Thames Court • High Street • Goring • RG8 9AQ

HIGHLY SKILLED DOCTORS RENOWNED FOR EXCELLENCE

Call 01491 873 989 or 0118 958 2016

[www.chilternmedical.co.uk](http://www.chilternmedical.co.uk)

**WEEKLY ZOOM YOGA CLASSES**

Teen Class, Weds 4-5pm  
Adults Level 1, Weds 7-8pm  
Adults Level 2, Weds 8:05pm-9:05pm  
Chair Yoga, Thurs 1:30-2:15pm  
Kids class (4+), Thurs 4:30-5:15pm

Suitable for all ages and abilities  
1:1 and group  
Private classes available upon request

Call Kate 07725 947740  
[www.skelyoga.com](http://www.skelyoga.com)

### Revitalise Foot Care

Mobile Foot Health Professional

Nail trimming, cracked heels, corn and callus removal,  
fungal infection, thickened nails and verrucae advice.

Contact Karen on 07542 676158  
or 0118 3435579



[www.revitalisefootcare.com](http://www.revitalisefootcare.com)  
[revitalisefootcare@gmail.com](mailto:revitalisefootcare@gmail.com)







# Fitter Happier Healthier

- 1-2-1 Assessments and Personal Programmes with Gecko Fitness Instructors
- Over 30 Fitness Classes per Week - Spin, Pilates, Yoga, Fit Steps, Body Pump and more
- 25m Indoor Swimming Pool
- Fitness Suite equipped with 37 Cardio and Resistance stations
- 3 Indoor Tennis Courts and 6 Performance Clay Courts
- 9 Hole Golf Course
- Therapy room offering Beauty treatments, Physiotherapy and Reflexology



Swimming · Fitness Classes · Sports Hall · Gym · Wellbeing



BRADFIELd COLLEGE SPORTS COMPLEX

email: [frontdesk@bradfieldcollege.org.uk](mailto:frontdesk@bradfieldcollege.org.uk) tel: 0118 964 4600

[www.bradfieldsportscomplex.co.uk](http://www.bradfieldsportscomplex.co.uk)





**The Orchard Clinic**

Osteopathy & Cranial Osteopathy  
Remedial & Sports Massage  
Relaxation Massage  
Podiatry & Chiropody  
Reflexology  
Life Coaching  
Psychotherapy & Counselling

Info@theorchardclinic.co.uk  
Tel: 01491 672332

*Gardeners Lane Upper Basildon RG8 8NP*

[www.theorchardclinic.co.uk](http://www.theorchardclinic.co.uk)



**Tai chi and Qigong classes**  
in Pangbourne Village Hall on  
Tuesdays 10:30 to 11:30 from January 2020!

Gentle exercise that can have many benefits to health and wellbeing, including improvements in:

- ✓ Posture
- ✓ Co-ordination
- ✓ Balance
- ✓ Strength
- ✓ Concentration
- ✓ Vitality

If you find other forms of exercise too strenuous or if you have difficulty with floor-based classes such as pilates or yoga, this could be a good alternative for you.

For more information or to book please go to  
[www.rookeholistic.co.uk/tai-chi-qigong](http://www.rookeholistic.co.uk/tai-chi-qigong)  
Or call Wendy on 07528 708650  
Email [wendy@rookeholistic.co.uk](mailto:wendy@rookeholistic.co.uk)

The Boathouse Surgery  
Whitchurch Road  
Pangbourne  
RG8 7DP



**boathouse physiotherapy**  
DIAGNOSE. TREAT. RECOVER.

If you or a loved one are suffering from daily pain that stops you from doing normal activities then we can help.

- Prepare for or recover from your operation
- Shoulder pain that stops you reaching
- Knee pain that stops you walking
- Back pain that stops you lifting
- Bladder issues that stop you going out worry free

No referral required. Contact us for advice today:

0118 976 7189  
[boathouse.physio@nhs.net](mailto:boathouse.physio@nhs.net)  
[www.boathousephysiotherapy.co.uk](http://www.boathousephysiotherapy.co.uk)




**Chiropractic the McTimoney Way**

for people and small animals

Multi-disciplinary clinic offering integrated health care in a friendly, relaxed setting

**Chiropody & Podiatry  
Sports & Remedial Massage  
Acupuncture & Homeopathy**

*Suitable for all ages. Free spine check available.  
Evening and weekend appointments available.*

**For Health Chiropractic**

**0118 984 3473**  
Unit 2, The Old Mill  
61 Reading Road  
Pangbourne  
RG8 7HY  
[www.forhealthchiropractic.co.uk](http://www.forhealthchiropractic.co.uk)



*Release your body's true potential*





## GOOD NEWS FOR PANGBOURNE YOUTH FC AS THE RETURN OF COMPETITIVE GRASSROOTS FOOTBALL GETS THE THUMBS UP

A collective cheer from PYFC coaches and players could be heard all round Pangbourne as the Government approved the FA's plans for the return of outdoor competitive grassroots football. Not wanting to waste any time the coaches immediately began putting in place all the necessary safety measures to ensure contact training could start again as soon as possible with matches kicking off in September.

Having made sure the squads kept up with individual and small group non-contact training throughout the summer, the teams are stronger than ever and raring to go. And what better way to start the new season than with two cup final matches in early September, delayed from May due to COVID. With the Pumas (under 12s) facing Caversham, and the Panthers (under 11s) due to battle it out against Rotherfield excitement is certainly mounting across the Club.

There's a thrilling new season in prospect for all the teams. The Falcons (under 15s), now the senior team, will face tough opposition as they move up to Division 3 of the East Berkshire Alliance League. At the other end of the spectrum, a new coach for the youngest competitive team, the Hurricanes (under 8s), means they can now look forward to the challenges of matches in the Berkshire Youth Development League.

PYFC is hoping to get a new under 7s squad off the ground this season with weekly training sessions and friendly matches only. To do this they need two or three willing parents to step up and help run the team. If your 5/6 year old is eager to play football and you'd be willing to get involved please get in touch via the Pangbourne Youth website.

The Club is always looking for new members to join their friendly squads and would welcome enquiries from boys and girls keen to play football and have fun. Contact PYFC via their website for more information – [www.pangbourneyouth.co.uk](http://www.pangbourneyouth.co.uk).



*The Phoenixes get back to training*

**Hurricanes – Under 8 (school year 2 or 3)**  
Play in the Berkshire Youth Development League (BYDL) on Saturday mornings.

**Hurricanes – Under 9 (school year 3 or 4)**  
Play in the BYDL on Saturday mornings.

**Red Kites – Under 10 (School year 4 or 5)**  
Play in the BYDL on Saturday mornings.

**Phoenixes – Under 11 (school year 5 or 6)**  
Play in the BYDL on Saturday mornings.

**Piranhas & Panthers – Under 12 (school year 7)**  
Two teams. Play in the BYDL on Saturdays.

**Pumas – Under 13 (school year 8)**  
Play in the BYDL on Saturday mornings.

**Falcons – Under 15 (school year 9 or 10)**  
Play in the East Berkshire Alliance League on Saturday mornings.

## PANGBOURNE GIRLGUIDING

Like many clubs and community groups, Pangbourne Girlguiding has had to adapt to new ways of working due to Coronavirus. Transferring our weekly unit meetings to virtual sessions on Zoom has worked incredibly well! Each week, around 17 Guides joined the four leaders to catch up and do a range of activities. The girls have enjoyed a quiz hosted by Izzi, bingo twice with Mel and Helen (back by popular demand!) an object matching game with Angela, and a special session from Cats Protection, and many other activities. A term at Pangbourne Girlguides would not be complete without the famous "chair game" which took on a new form this term with Guides racing to find certain items in their homes and being them back to show to the camera. Another highlight was having an excellent peer educator teach us all about mental wellbeing and mindfulness, and helping us work towards the 'Think Resilient' badge.

Our Guiding meetings are continuing online over the summer on a fortnightly basis and we look forward to seeing what the Autumn term brings!

For more information on Girlguiding in the village, please contact Helen on 07762 112921.

*Helen, Angela, Mel and Izzi*

# LOCAL CLUBS

---

## PANGBOURNE ALLOTMENTS

Now is the time we reap the rewards of the hard work put in earlier in the year, with the allotments bulging with vegetables, flowers and fruit. Extras are left at the entrance to the allotments for passers-by to help themselves and (hopefully) make a donation to PAA funds.

The fencing by the track at the field end of the allotments has been done, and will hopefully keep dogs on the straight and narrow! The new dog poo bin has been installed by the entrance, but sadly we are still finding bags of poo hanging on bushes. We would be very grateful if walkers could challenge the culprits if they see this happening.

At the time of writing, we are still hoping to have our Open Morning on 15th August in National Allotments Week, and if this takes place we'll report in the next issue. The decision to proceed was not unanimous with the PAA Committee, but the majority felt that small groups in the open air would be safe enough. It remains to be seen if anyone will turn up!

Sadly, Mr Badger has already attacked some sweetcorn crops so they must be gaining access from the street end. The problem about the site is that it is bisected by a public footpath, so the cost of enclosing both sides of the track is prohibitive. It is believed that we have stopped animal incursion from the two field sides.

The annual allotment barbecue is due on Saturday 5th September, and again we are hoping that it will be possible to hold this. All allotment holders are welcome, and it's a great opportunity to get to know one's neighbours and to socialise.

For anyone interested in going on the waiting list for an allotment, please would you contact Jo Griffin ([pangbourneasstclerk@gmail.com](mailto:pangbourneasstclerk@gmail.com)).



*Photo by Valerie Caesar – Church Cottage, Pangbourne*

## PURLEY HORTICULTURAL SOCIETY

The Society has re-opened the trading store although only on Saturdays from 10am to 11am. Customers are asked to follow all social distancing arrangements and to wear a mask while in the store. Please see the website for more information.

*Marion Dabbs*

## RNLI AUTUMN EVENT

As you may recall, in the last edition of this magazine, it was reported that our RNLI Autumn Event Quiz Night may go ahead with all the appropriate restrictions and conditions in place. However, given the current circumstances, we as a committee have decided, sadly, to cancel the event for this year. It is with a heavy heart that we have made this decision as not only will we not be enjoying a really fun evening, but we will not be raising funds for our beloved charity! Given these extreme times and the hardships the charity is experiencing, our lack of fundraising is indeed a concern. So may we put out a plea to all our supporters who during the good times have given so generously: If you can spare some small change – or indeed large notes(!?) – we have our collection boxes in and around the village. There is also the facility to donate on line via the RNLI app, and I'm sure any committee member would take pleasure in accepting your donation! Thank you in advance if can see your way to do this.

So, hopefully, we will be able to plan another event or two for 2021. Keep reading the mag for further updates!

Please keep safe and well everyone.

*Denise Saunders*  
RNLI Committee





## GET SET FOR AUTUMN TENNIS!

This summer the club has welcomed many new members, including lots of families making use of the super facilities. At popular times, players were waiting to get on court – almost unheard of in the recent history of the club! We have introduced an online system to allow members to book a court to avoid the queueing.

The guidelines for safe play were updated several times over the summer, which enabled us to restart junior coaching and continue with the adult coaching programme in July and August. The singles box leagues, for adults and older juniors, also proved a popular way of playing competitive, albeit friendly, matches.

The guidelines have been relaxed again which will allow us to hold a tournament and return to larger group coaching from September. Of course, it is possible that the situation will change, so please do check the website for the latest information.

### END OF SUMMER FUN TOURNAMENT

Sunday 6th September 1pm – 4pm

We are delighted that tennis clubs are now able to hold tournaments, with social distancing respected. A fun and friendly American Doubles Tournament will be a fitting end to a super summer of tennis. The format enables players of all standards to play together and you don't need a partner to play. Unlike other years, the club will not be offering any catering, but you can bring your own and picnic on the Recreation Ground, suitably distanced from other families/groups. In line with current guidelines, the club house will be closed (other than for use of the toilets). Email us at [info@pangbournetennis.org](mailto:info@pangbournetennis.org) to enter.

### THE ANNUAL GENERAL MEETING 2020

Sunday 6th September 4pm – 5pm

Weather permitting, we will hold the club's AGM outdoors following the tournament.

### JUNIOR COACHING IN SEPTEMBER

We will be running junior coaching on Friday afternoons for four weeks, from September 11th to October 2nd. There will be sessions between 4pm and 7pm for different age groups and ability levels. Sessions cost £8, with discounts for siblings. If you have not already booked, please email [juniors@pangbournetennis.org](mailto:juniors@pangbournetennis.org) as soon as possible.

### AUTUMN COACHING FOR ADULTS ON SUNDAYS

The popular group coaching for adults will restart on Sunday mornings from September 13th. Up to 12 players can now take part in each session, which will run from 11.30am to 1pm. Members still need to book in advance to make sure they have a place.

Sessions cost £10 for members and £15 for non-members, with discounts for advanced block bookings. For full details and a registration form, go to <https://pangbournetennis.org/coaching-for-adults/>.

Keep safe and well and continue to enjoy your tennis!

*Pangbourne  
Tennis Club  
Committee*

**pangbourne**  
tennisclub

---

## PANGBOURNE HERITAGE GROUP

### A SUMMER TO REMEMBER

The heritage group has always been interested in the here and now, the present being a reflection of what has gone on before. However, nobody expected to be writing about a lockdown which affected shops, trades and businesses for several months.



We witnessed the closure of many of the village businesses, but those that stayed open did so with much goodwill, earning the gratitude of customers and clients. Pankhurst Cycles is tucked away in Horseshoe Park, but was one that came into its own as we all got our bicycles out.



July brought the next stage of openings when you could have your haircut and smell the coffee. With the co-operation of the weather, it was no hardship to sit outside with a drink as the shutters came down from the cafes, restaurants and pubs. Costa looked so much better with the tables and umbrellas back, and the Swan was ideal for river watching.



Newcomers on the block were welcomed, Baxters and Little Labels adding to the spread of shops along the Reading Road. Pangbourne Village is alive and well. We have learnt to appreciate the little things that make it special. We have even practised queuing again, and chat while doing so. Back to the early fifties perhaps?

*Lesley Crimp*

PS. We have no meetings booked at the moment, and will let you know when we can start again.

## PANGBOURNE TWINNING ASSOCIATION

We hope you enjoyed our village quiz, devised by Nick Syfret and organised by Nigel-Suffield-Jones and Mike Power as a contribution from Pangbourne Twinning Association for some summer fun in the village during these difficult times. The prize-winners will be announced on Zoom and our Facebook page on September 6th. <https://www.facebook.com/pangbournetwinning/>. The wonderful prizes have been generously contributed by Triangle Travel, Pangbourne Garage, S Bell & Son Auto Services, Nino's Trattoria, La'De Kitchen, The Pangbourne Cheese Shop, Collins Hardware, Green's, Abbotts Shoe Repairs, and the West Berkshire Brewery. Children's prizes from Thames RiverCruise, Party Pieces, Bucklebury Farm Park, Beale Wildlife Park and Beale Wildlife Park. The Lucky Dip prizes were provided by Yattendon Estates Ltd, Pankhurst Cycles, Baxter's Cafe Kitchen, The Garden Cafe and Cozze Ristorante. Many thanks to all our sponsors for their generosity.

Because of the continuing pandemic, all our usual autumn fundraising efforts are still on hold. Do keep an eye on our website for further news! So instead we bring you some more information about our lovely twin town, Houdan, in the Yvelines. Last month we described the commune, and its history. This month we focus on the gastronomy, which, as in many French areas, is closely bound up with its history and traditions.

Situated on the main route between Paris and Brittany, Houdan has long been an important meeting place, market, and crossroads. It boasts three annual fairs and the now famous annual pâté competition. It is an agricultural area, famous since the Middle Ages for its cattle, dairy and poultry.

The oldest fair is the Foire Saint Mathieu, in fact one of the oldest in Europe. It was founded in 1065 by the then Lord, Simon de Montfort, as an opportunity for his tenants to buy and sell animals and provisions for the winter. Nowadays it is more an agricultural show and celebration of local crafts and culture. It provides a good opportunity for meeting people. It boasts a pageant or carnival, fireworks and sometimes sports matches. Last year Pangbourne was invited to send footballers but we were unable to do this, so a local team generously wore Pangbourne football jerseys and played on our behalf. The town hopes to mount the carnival again at the end of September.

In more recent years there has also been the Fête de Saint Christophe in July – a funfair and flower festival, and a dance festival in March.

One of the most celebrated local products is the Pâté de Houdan, invented by a local pastry cook and restaurateur at the end of the 19th century as a lighter, more easily digested version of the usually pork-based pâté en croûte (pâté in pastry). It is made of chicken breast pieces, with layers of liver pâté, a stuffing made of eggs, cream and chicken meat, and a mushroom mixture, all encased in pastry. Various versions exist. For special occasions, a richer version involves truffles substituting mushrooms, and goose liver for the chicken liver pâté. Each year there is a contest for making the best, and local chefs like to showcase their imagination and creative skill in modifying the recipe, which must have its four key ingredients. It is delicious hot or cold and is best served with a madeira sauce or mushrooms. Ideally the pâté is made from the Houdan chicken.

This distinctive local breed of five-toed, black and white speckled chicken with an extraordinary butterfly-shaped comb, was probably first bred in the mid-19th century and was subsequently exported to England and the United States. It was famed for its eggs and its fresh-tasting meat, which dries easily, hence its use in pies rather than roasting.

The authenticity of the pâté is protected, and the contest is organised by the newly re-constituted Gastronomic Brotherhood of The Pâté and Chicken of Houdan. <https://www.patedehoudan.org/>

Members managed to hold their usual annual ceremony just before lockdown, in March this year, with a walk through town, alongside other



*Houdan pâté poster in the Pangbourne Village Hall.*



*Houdan pâté concours 2019 (patedehoudan.org).*



*Houdan chicken*



representatives of brotherhoods and the local band, and a gastronomic meal. Here is the amazing menu: Consommé de Poule de Houdan aux Légumes Confits – Pâté de Houdan Festif Cerises Itxassou à l'aigre doux– Vol-au-Vent truffé de Volaille de Houdan – Millefeuille d'Ossau Irati au Piment d'Espelette – Saint Honoré Triple Vanille – Café.

Another well-known local product is the cheese La Feuille de Dreux. This is a cow's milk cheese, like camembert but lighter and not so thick. It was made from semi-skimmed milk, after the cream from local herds had been skimmed off for sale to Paris. Local farmers used the cheese to feed hungry farm workers at harvest time. It is matured in chestnut leaves for about three weeks. It is a light-tasting cheese which smells of autumn woods and is nowadays distinctively decorated with a dried leaf. Even when past its best, it is delicious mixed with a little local cider and spread on toast. It is available from the lovely cheese shop in the centre of Houdan, (which also sells some of our local cheeses). There are many artisan producers around Houdan, of notable cheeses, pastries, smoked salmon and pâté, herbs, and spices.

We hope we have whetted your appetite! We missed our visit to Houdan in May this year, and our lovely French partners have invited us to visit them next May instead. We plan to go the first bank holiday weekend in May, all restrictions permitting. We travel by coach, but, of course it's fine to make your own travel arrangements. It is not necessary to be able to speak French! We stay with local families and are always much entertained by their fun and hospitality. If you would like to join us next year, please get in touch through our website. [www.pangbourne-twinning.org](http://www.pangbourne-twinning.org). We will be finalising plans early next year.

*Alison Hill*

*Chair: Pangbourne Twinning Association*

---



*Confrérie March 2020 (patedehoudan.org/).*

---

## WHITCHURCH HILL CAMERA CLUB

To start or not to start, the club's new season that is – we have the 9th September pencilled in as a start date with a reprise of the online competitions held during lockdown on the agenda . . . to be discussed. Masks, social spacing, capacity all to be considered and then of course there's the virus itself! As I said pencilled in.

Our Chairman Alan Copeland has managed to bring forward some of the 'locked down' speakers from our last season and introduce others so a full programme to be enjoyed, on our return.

**When:** we meet on a Wednesday at 8pm, with an occasional 'techy' Thursday.

**Where:** Whitchurch Hill Village Hall, Manor Road.

**How:** as an annual member or 'cherry pick' your visits.

Find our details on our website [www.whitchurchhillcameraclub.co.uk](http://www.whitchurchhillcameraclub.co.uk).

*Take care – Lyn Higgs*



*Spirited by Tilly Jamieson*



*Hawker Dragonfly by Rachel Paton*



*The Poppy Path (Yattendon) by Dorothy Wood*



## ADVENTURE DOLPHIN CHARITY

What strange times we are living through, the best summer for some time, the River now open, but advice from British Canoeing means we are unable to open, indoor climbing not possible and the building closed. So Frustrating for not only our members and volunteers but all those who wished to learn to paddle and climb this summer not forgetting all our community groups not being able to meet. That said, we hope you and your families and relations are all well and safe.

The Trustees have been meeting regularly and have been given the green light to begin to look at re opening in a limited way. In the first instance we are planning to open the building to our community user groups and those just wanting to use the upstairs during the early part of September. Limited activities will be brought back towards the end of September. This period of time has been difficult for all of us involved with the Centre, we aim to ensure those using the Centre and clubs feel safe.

Just as lockdown started we completed the redecoration of the main areas of the Centre, this was needed after 10 years of fairly heavy use. So when we reopen people will be enjoying a brighter, fresher look, and we look forward to showing you. The Centre is available for both one off and regular bookings please contact [bookings@adventuredolphin.co.uk](mailto:bookings@adventuredolphin.co.uk).

We are about to complete over three years of negotiations with Pangbourne Parish Council and West Berkshire Council to formerly sign a lease for the building. This will enable the Charity to take over from the local Authority. This has been a long task but we are really looking forward to the future and making the building and clubs more available to the local community. Many thanks are due to the officers of both Councils and of course our Trustees.

With the Trustees in mind, after over 30 years involvement with the Centre Clive Williams is to step down as our Chairman as are two other Trustees at our AGM in November. The Trustees are responsible for the building and programmes and ensuring we follow our charitable purpose. We are looking for replacements to join the Trustees especially from local people who have

an interest in supporting us to make the Centre into a thriving community hub. We would be interested to hear from you if you have some time to give, training will be given, we meet six times a year. We are particularly interested in people with web experience, marketing, finance and communications. If you are interested we would like to hear from you, for an informal discussion please contact us on [info@adventuredolphin.co.uk](mailto:info@adventuredolphin.co.uk) leaving your name and contact details and we will get back to you.

So where are we at the moment? Recent guidelines do not allow us to open the changing rooms, social distance is still 2 metres, thus we find it would be difficult to run courses where our volunteer coaches would need to work inside the 2 metre limit, for example, water based activities where rescuing would be important. The wearing of face covering and shields would be difficult as well as assisting folks back into boats without physically holding them. Our climbing wall is small and confined so groups on courses would be difficult. These regulations are being reviewed constantly by our National Governing Bodies and we hope that we will be given the opportunity to do a phased return soon.

Duke of Edinburgh's Award has continued throughout the lockdown with a regular Monday night on line session, looking to give members some background training. We are hoping to restart our regular meetings at the end of September with the possibility of this year's groups finishing their expeditions in the autumn.

We aim to recruit our next year's groups for Bronze Silver and Gold in September. If we are unable to meet we will start sessions on line until we can all get together. The Award is aimed at young people (for Bronze you need to be in Year 9 at school or 14 years of age; for Silver you need to be in Year 10 at school or 15 years of age; for Gold you have to be 16 years of age) who wish to take on a challenge. All must complete the Awards by their 25th birthday. At each level of the Award you will need to complete a physical challenge, learn a skill. Complete some community work and with friends complete an expedition, at Gold level only, a residential project needs to be completed too. The Club has been offering the



Award for over 30 years and have a wealth of experience. The advantage of doing the Award at the Centre is it is local, you meet friends from other schools. We have more flexibility in offering expeditions walking, canoeing and cycling and the design of your programme and the venue to be used. In the past expeditions have been local and to far off destinations in Canada, Arctic, Europe and New Zealand at Gold level. More information about the Award is available from the D of E website or from the Centre Website. If you would like to be considered joining us for next year please contact [dofecoodinator@adventuredolphin.co.uk](mailto:dofecoodinator@adventuredolphin.co.uk). So we can add your name to our group lists. We will be holding an information evening if all goes well on Monday 28th September at 7pm at the Centre.

Apart from missing all our club sessions and courses this season our biggest event following the Open Day is our annual Hasler Canoe Marathon. This year the event was scheduled in early September. After lots of discussion we felt it would be too close to the reopening of many other venues and the start of schools opening. Thus we felt the virus could be brought in unknowingly by paddlers/parents/spectators and the general public (as we have no control of who uses the meadow). So to protect our volunteers and our members and the community we have decided to not to run our event this year.

Marathon group informally training at usual times; Most Sunday mornings an informal paddle is taking

place as with some more during the evenings. Members are also exploring various parts of the Thames and Kennet and Avon Canal, some have even managed to get to the coast for a paddle!!

Paddle boarding has hit a peak of popularity with many local residents who now have their own boards or boats. British Canoeing have brought a new website called "Paddlepoints" on the Go Paddling website for ideas and information of where you can go when you have exhausted Pangbourne Meadow.

Can you help us? We are looking for a person to help develop the use of the building during times when it is not used for Club Activities. Typically this will be during the daytime and evenings when currently available. The person we are looking for needs to be self motivated and flexible. We will give you the use of an office and the remuneration will be based on a percentage of the booking fees you are able to bring secure. Ideally You will be self employed, we will consider any reasonable start up costs you may have (max £500). You will report to the Trustees. If this business opportunity has an appeal to you then please contact Steve Ellis (Vice Chairman) for an informal conversation and more information – 07792 277202.

We look forward to seeing you all soon, please stay safe, and we hope that you had a great summer holiday where ever you went.



**St Andrew's**  
PANGBOURNE

**An outstanding co-educational day and boarding school set in 54 acres of Berkshire woodland for pupils aged 3-13**



To arrange a visit, please contact:  
[registrar@standrewspangbourne.co.uk](mailto:registrar@standrewspangbourne.co.uk)  
0118 974 4276 [www.standrewspangbourne.co.uk](http://www.standrewspangbourne.co.uk)



**PANGBOURNE VALLEY PLAYGROUP**  
**PLACES NOW AVAILABLE**

Pre-school childcare for 2 to 5 year olds  
30 hours and shared funding accepted  
Morning, lunch club and afternoon sessions are available  
We are located in the grounds of Pangbourne Primary School

**(0118) 984 1661**  
**[www.pvpg.org.uk](http://www.pvpg.org.uk)**





Beautifully designed gardens by  
experienced, qualified, local  
garden designer

Andrea Newill MSGD, MRALI  
t: 0118 9710450 w: andreanewill.co.uk

follow us on   



**BUILDING, CARPENTRY AND  
HOME IMPROVEMENT SPECIALISTS**  
**ALL WORK GUARANTEED**  
OVER 15 YEARS EXPERIENCE

- EXTENSIONS
- ALTERATIONS
- RENOVATIONS
- EXTERNAL DECOR
- CONVERSIONS
- KITCHENS/BATHROOMS
- PATIOS/DRIVES
- LISTED BUILDING WORKS

**ALL ASPECTS OF BUILDING WORK UNDERTAKEN**  
**FULLY INSURED • REFERENCES AVAILABLE**

**0118 9845959 0791 7095379**



**GARLANDS**  
organic & natural



**Garlands for high quality food and much more.**

Seeds, nuts and grains | Sustainably caught fish |  
Organic fruit and veg | Artisan bread | Dairy &  
Non-dairy chilled foods | Speciality and "Free from"  
foods | COOK remarkable food for your freezer | Local  
beer | Organic wines | Health supplements | Natural  
Cosmetics | Eco-friendly household products |  
BOODY bamboo clothing | Candles |  
Essential Oils | Loyalty scheme

6 Reading Road, Pangbourne, RG8 7LY  
0118 9844770 orders@garlandsorganic.co.uk  
garlandsorganic.co.uk

Unit 12,  
Manor Farm,  
Peppard Common,  
RG9 5LA



**YOUR LOCAL GLASS  
AND GLAZING COMPANY**

- All types of glass cut to size
- Mirrors, shelves and table tops
- Greenhouse glass and picture glass
- Full glazing service, trade and domestic
- Broken windows and shopfront glass replaced
  - Traditional leadlights repaired
  - Broken and misted double glazed sealed units replaced
- UPVC, aluminium and hardwood windows, doors and conservatories
  - Delivery service

**CALL FOR ADVICE AND FREE QUOTATION**

**01491 629901**



**REBECCA KINGWELL**  
FINANCIAL PLANNER

Comprehensive, bespoke, financial advice & planning



Rebecca Kingwell  
BSc (Hons), DipFA

Would you like to start making  
better provision for your future and  
retirement?

Do you need help understanding  
your existing pension  
arrangements?

I offer specialist advice on pension  
planning, investment planning,  
savings, tax efficiency and life and  
critical illness protection.



e: rebecca.kingwell@sjpp.co.uk t: 0330 053 6797

www.rebeccakingwell.co.uk

Oxfordshire · Berkshire

Rebecca Kingwell Financial Planner is an Appointed Representative of and represents only St. James's Place Wealth Management plc (which is authorised and regulated by the Financial Conduct Authority) for the purpose of advising solely on the Group's wealth management products and services, more details of which are set out on the Group's website at www.sjp.co.uk/products



**BTL Emsella™**

WOMEN'S HEALTH

## A breakthrough treatment for complete pelvic floor rehabilitation

Over 40% of women in the UK suffer from embarrassing "oops" moments, also known as urinary incontinence.

Andresa is the **FIRST** clinic in the south of the UK to offer **The BTL Emsella, a non-invasive, clinically proven solution.**

- 95% success rate
- Results in just 3 weeks
- Remain fully clothed and seated throughout
- Backed by science - FDA approved



If you would like to find out more about this unique, life-changing treatment or would like to book a complimentary and confidential consultation, call 01635 800183 | [info@andresa.co.uk](mailto:info@andresa.co.uk) | [www.andresa.co.uk](http://www.andresa.co.uk)



# STANROD MOTORS 2

**is happy to collect and deliver your car  
for all your MOT and servicing needs**

**Call Steve or Sean  
at STANROD MOTORS 2  
today on 0118 976 7686**

Open 8am-6pm Mon-Fri • 8am-Noon Sat  
14 Station Road, Pangbourne, Reading RG8 7AN  
email: [info@stanrodmotors2.com](mailto:info@stanrodmotors2.com)

# PANGBOURNE PRIMARY SCHOOL

## FOPPS – FRIENDS OF PANGBOURNE PRIMARY SCHOOL



FOPPS is looking forward to the school reopening in September, and over the summer break and into 2020/2021 we continue to raise funds for our children's education and experiences. ICT equipment is more critical than ever and we are replacing the entire school's interactive whiteboards and funding an additional Class's worth of Chromebooks. We are also putting funding aside to replace the playground equipment in the Foundation Stage area, and other activities and items to support the children's education and wellbeing.

### PANGBOURNE 10K – YOUR WAY!

Unfortunately, due to restrictions on large gatherings imposed by the coronavirus pandemic, FOPPS has had to take the sad decision to postpone the Pangbourne 10k in 2020. The race will no longer take place on Sunday September 13th. However, we would like to introduce our alternative event: **Pangbourne 10k – Your Way**.

This event is open to all and aims to encourage increased fitness for runners, parents and children in the local area, as well as raise funds for FOPPS. To join in, all you need to do is **travel 10k however you want** between Sunday September 20 and Saturday September 26.

There are categories for individuals, families, teams and children. You can be sponsored, sponsor another runner, make a donation, or simply join in our virtual event and share your experiences with no cost to you. You can join our 10k challenges, or do the **Pangbourne 10k – your way**.

To take part, visit our website [www.fopps.org.uk](http://www.fopps.org.uk) where you will be taken to our Just Giving page to make your donation or sponsorship.

The challenge categories include:

- Individual *Speed Race* – run the normal Pangbourne 10k route as fast as you can (open to different age groups: junior, open male/female, veteran and supervet)
- Individual *Personal Challenge Race* – run any 10k route you like
- Individual, Family, Team or Child *Staged Challenge 10k* – run 10k in stages
- Children's Categories – for details see website
- Most Unusual 10k!



FOPPS is also hoping to continue with the Fireworks Fiesta which is currently planned for Saturday 7 November. This may change based on the situation nearer the time, but updates will be posted to [www.fopps.org.uk](http://www.fopps.org.uk) as soon as we have them.

Outside of our events, we can continue to raise funds for our local charity through three online and retail programmes – the West Berkshire Lottery, Amazon Smile, and shopping at the local Co-op stores.



West Berkshire Lottery is an exciting weekly lottery that raises money for good causes in West Berkshire – and FOPPS is now registered as one of the causes. If you would like the chance of winning up to £25,000 AND supporting FOPPS, all you need to do is go to the site below and purchase a ticket. [www.westberkshirelottery.co.uk/support/fopps](http://www.westberkshirelottery.co.uk/support/fopps)

If you shop online at Amazon, you can now also help to raise funds for FOPPS. Next time you log on, navigate to [smile.amazon.co.uk](http://smile.amazon.co.uk) and choose to support Friends Of Pangbourne Primary School (FOPPS). AmazonSmile is a simple and automatic way for you to support a charity of your choice every time you shop, at no cost to you. When you shop at [smile.amazon.co.uk](http://smile.amazon.co.uk), you'll find the exact same price and products, with the added bonus that Amazon will donate a .05% of the net purchase price to FOPPS.



We are again one of the local community fund charities in the Co-op in Pangbourne. 1% of spending on Co-op branded products is divided among the local community funds, and if you have a Co-op card you can log on to your account and nominate FOPPS as your chosen charity. Please consider supporting your local primary school by shopping at the Co-op over the next few months.

As always if you would like to get involved, help or donate to your local primary school during these challenging times please contact us at [info@fopps.org.uk](mailto:info@fopps.org.uk).



## THE POWER OF A CONNECTED EDUCATION

The unprecedented closure of schools in March changed the way schools operated overnight. Kitchen tables became temporary classrooms, teachers figured out how to engage students without seeing them, and students quickly adapted to learning without access to their usual resources.

Whilst not necessarily preparing for a pandemic, Pangbourne College had spent the last few years investing heavily in IT infrastructure and rolling out a 'Bring Your Own Device' policy across the school. Originally intended to cater for the increasing use of technology and online resources in education, it turned out to have been the best possible preparation for a rapid transition to full online learning. Already used to Google Suite for Education, College students and teachers quickly adapted to a normal timetable of lessons, run entirely through Google Classroom, Meets, Hangouts and Gmail.

The online learning platform, named ConnectEd@Pangbourne by the College, was a great success. "The feedback from our College families was extremely positive," says the Headmaster, Mr Thomas Garnier. "Although not a replacement for being in school, I am pleased that we were able to continue to deliver our excellent academic provision online."

The College also aimed to provide a breadth of co-curricular opportunity and maintain its high standards of pupil welfare, all virtually. In terms of pupil welfare, the College reaped the benefits of previous investment in positive mental health initiatives and programmes, which were adaptable to a virtual setting.

"Looking after the mental health and wellbeing of all our students was a top priority during the last school term when everything was virtual," says Mrs Caroline Bond, Deputy Head Pastoral. "We made sure that our tutors, houseparents and teachers were keeping a close eye on pupils to identify who was struggling emotionally or with loneliness. This support is ongoing, whether our pupils are physically here or at the other end of a computer."

"For example, every year we train Sixth Form students to be Peer Mentors," says Mrs Bond, "giving them the tools to support younger peers, look after their own wellbeing, and a positive leadership experience of a very different kind. This continued with online peer mentoring sessions during the lockdown, which some of our younger pupils found really helpful."

The creative and sporting elements of College life were slightly harder to replicate, but staff thought creatively to provide a range of opportunities.

Staff and pupil members of the Boat Club were challenged to row (on a rowing machine), cycle or run the distance to Rwanda and back in the first half of term – nearly 20,000km in total – to raise money for the charity RwandaAid. Not only did they finish the challenge a week faster than the Head of Rowing thought they would, they raised over £2,500 for RwandaAid in the process.

College staff, pupils and parents were invited to contribute works of art on four different themes (Just Visible, Natural or Artificial, The Passage of Time, or Varied Hues) for an inclusive Summer Art Exhibition, which generated photography, drawings and paintings from a number of different contributors. Pupils and staff participated in virtual music events, providing recordings of themselves playing an instrument or singing for one of the informal virtual music performances of the term, or contributing to larger virtual choir and marching band pieces.

Mr Garnier says: "We tried to keep to our ethos of being a people place where every individual matters, even virtually. We are known for our warmth, our individual support, and our community feel, and with all the uncertainties of lockdown we felt it important to keep these values at the front of our minds. That said, we are very much looking forward to opening the College in September and welcoming our pupils and teachers back on to the campus – it most definitely is not the same without them."



*Summer Visual Art Exhibition*





*"Lafford & Leavey, experts in  
bringing the outside - inside"*

## **Windows - Doors - Conservatories UPVC or Timber**

One of the leading window, door and conservatory installers in Berkshire, offering free quotations and advice from a company with a formidable reputation spanning 50 years. Choose from a wide range of products in a style and finish which will suit your budget and needs, we are only a phone call away.



## **LAFFORD & LEAVEY LTD**

ARROWHEAD ROAD, THEALE, READING, RG7 4AZ

Tel: Reading (0118) 9303333 Fax: (0118) 9323707

Email: [info@laffordandleavey.co.uk](mailto:info@laffordandleavey.co.uk)

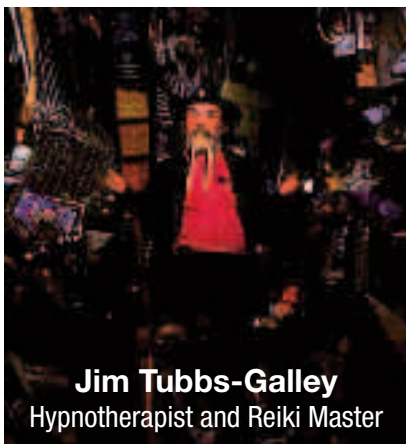


EASY DOES IT . . . BUT DO IT . . . TRY HYPNOSIS » » » BE CALM . . . REMAIN RELAXED . . .

CHIEF NOURISHER IN LIFE'S FEAST . . .

# Trans4Formations

*Be free of old habits and  
insecurities with hypnotherapy*



**Jim Tubbs-Galley**  
Hypnotherapist and Reiki Master

Addiction • OCD  
Stress • Anxiety and Fear  
Depression • Shyness  
Public Speaking  
Self-Esteem and Confidence  
Sleeping Problems  
Stop Smoking • Weight Loss

Jim trained at the highly respected RBCCH (Royal Berkshire College of Clinical Hypnosis) and in 1993 trained at UK London College of Clinical Hypnosis, so you can rest assured of many years experience. Drawing from the fields of Hypnotherapy, Cognitive Behaviour Therapy (CBT) and Neuro Linguistic Programming (NLP). Jim uses the most effective techniques from clinical practice to enable you to develop an enhanced and sustainable sense of well being, control and happiness.

Everyday debilitation fears and phobias cause unnecessary distress for thousands of people. Feel better about yourself. Hypnosis will help you retrain your mind so you'll feel much more confident in future situations.

Evenings, late nights and  
weekend visits available

**07881 878 545**

Based in Reading town centre

**[www.transzzzzformations.co.uk](http://www.transzzzzformations.co.uk)**

The Old Forge, 8 Merchants Place, RG1 1DT

Corporate and business  
group sessions – hypno  
boost your workforce!



» » » SLEEP EASY . . . EASY SLEEP . . . TRY HYPNOSIS » » » WASH FACE . . . GET SPACE . . . TRY HYPNOSIS » » »

TRY HYPNOSIS » » » CONTROL WEIGHT . . . STOP WAITING . . . TRY HYPNOSIS » » » WEAR MASK . . . MASK PERSONA . . . TRY HYPNOSIS » » »

» » » TRY HYPNOSIS » » » MORE ALERT . . . CONTROL EMOTIONS . . . TRY HYPNOSIS » » »



Offering quality tree care  
from a family run firm

40 years experience in  
planting, pruning and removal

Free estimates and advice

Contact Stewart Bee on  
**0118 9595 222**  
**07976 611128**

**beetreeservices@tiscali.co.uk**

*Seasoned firewood always available*



Perfect Boundary Limited



Hard Landscaping, Groundworks,  
Paving and Driveways, Construction

*Professional Service. Call for a Quotation.*

Email: [info@perfectboundarylimited.co.uk](mailto:info@perfectboundarylimited.co.uk)

[www.perfectboundarylimited.co.uk](http://www.perfectboundarylimited.co.uk)

Tel: 0118 996 8009 Mob: 07796 202217



- Tree Surgery
- Tree Felling
- Hedge Cutting
- Logs
- Fencing
- Fully Insured
- Fully Qualified
- Free Quotations
- 24 Hour Callouts
- Competitive Prices



01488 647204 07979 507 195

[robfox@foxestreeservices.co.uk](mailto:robfox@foxestreeservices.co.uk)

[www.foxestreesurgery.com](http://www.foxestreesurgery.com)

Local business based in Newbury



Hedge Cutting

Fencing

Plant Hire

Obstructive Trees

Complete Tree Care

Stump Grinding

Stump Grinding

Stump Grinding

Stump Grinding

Stump Grinding



## J A M Upholstery

Traditional Antique & Modern Upholstery  
& Re-covering

Seat feeling soft and saggy?

Arms need firming up?

Lumbar lacking support?

Jenny can give your favourite chair the love and  
attention needed to get it back in shape,  
or simply give it a new look in a new fabric.

[www.jamupholstery.co.uk](http://www.jamupholstery.co.uk)

[jenny@jamupholstery.co.uk](mailto:jenny@jamupholstery.co.uk)

07976 443972

Based in Lower Basildon

## Coombe House

RESIDENTIAL CARE

- Retirement home in Streatley on Thames
- 24 hour care and support by well qualified staff
- Elegant, homely and relaxed country house in attractive grounds
- Peace, privacy and independence in caring surroundings
- Serving the local community for over 30 years



01491 872174 [www.coombehouse.co.uk](http://www.coombehouse.co.uk) [enquiries@coombehouse.co.uk](mailto:enquiries@coombehouse.co.uk)







We stock delicious local, British & Continental cheeses as well as a wide range of delicatessen products. We're proud to support small artisan producers.

We pride ourselves on our customer service and are dedicated to providing cheese at its very best.

Come and visit us at 17 Reading Road, Pangbourne  
Find us on Facebook – The Pangbourne Cheese Shop  
Follow us on Twitter @PangCheeseShop

www.pangbournecheeseshop.co.uk 0118 984 3323

## MWB Carpentry

Where Detail Matters

Specialist in bespoke furniture and interiors.  
Storage Units, Bookshelves, Media Cabinets  
Kitchens and Worktops  
Cupboards, Wardrobes, Fireplaces,  
Flooring, Skirting, Architraves, Doors and Bespoke  
Office Desks, Shelving and Stud Wall Construction  
Also garden Rooms, Workshops, Decks, Cladding

Call Matt - 07850 310220

e-mail - matt@mwbcarpentry.com  
www.mwbcarpentry.com

## E. A. LAMING FLAT ROOFING

15 years guarantee  
on all high performance felts

also

Tiling and Lead Repairs

Phone Bradfield  
0118 9744701 or  
07880 930 958

Email: eddylaming@hotmail.co.uk

38 years experience

A . B .

# WALKER

THE FUNERAL PEOPLE

A FAMILY BUSINESS SINCE 1826

THATCHAM – 01635 873672

TILEHURST – 0118 304 0068

READING – 0118 957 3650

ALSO AT BRACKNELL, CAVERSHAM,  
HENLEY, MAIDENHEAD, WOKINGHAM.

TRADITIONAL AND CONTEMPORARY  
FUNERAL SERVICE AND DIRECT CREMATION

FLORAL DESIGN AND MONUMENTAL MASONRY

PRE-PAID FUNERALS, LATER LIFE LEGAL SERVICES

BEREAVEMENT CARE



WWW.ABWALKER.CO.UK



Golden Charter  
Funeral Plans



## DRAIN & ABLE

Independent Drainage Service

24/7 EMERGENCY SERVICE

GUARANTEED ARRIVAL

ALL TELEPHONE CALLS ANSWERED  
PERSONALLY

Call anytime on 0118 957 6244/  
07795 598207

www.drainandable.co.uk



## LOCKSMITH

ACG  
SERVICES

Locks changed, fitted, repaired & opened.  
Yale locks, five lever mortice locks, digital locks,  
UPVC door locks & handles, UPVC window locks.

Emergency callout service

Over thirty years of experience. Free quotations

Tel: 01491 682050 or 07710 409216

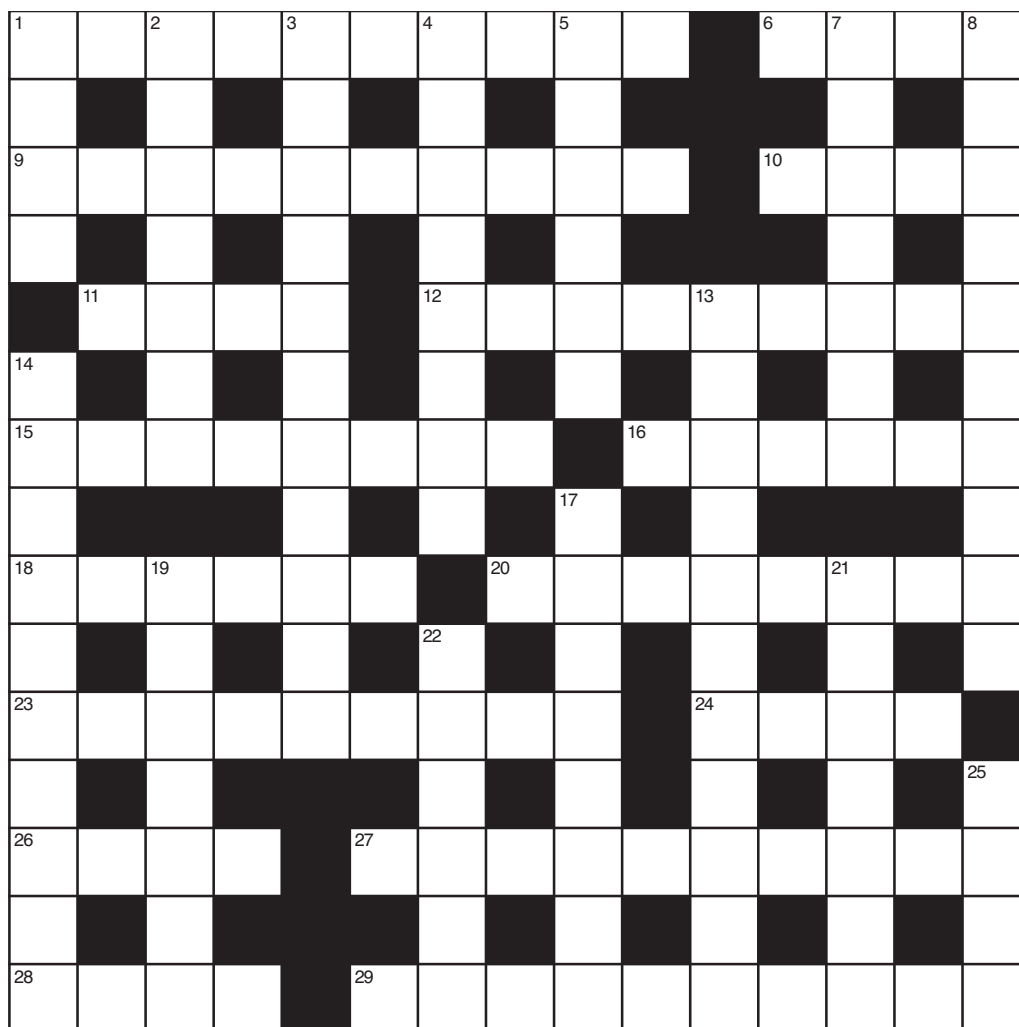
www.acgservices.co.uk



Office: 3 Wayside Green, Woodcote, Oxon RG8 0PR.

Proprietor Richard Homden

# CROSSWORD



CANTOR'S CROSSWORD NO. 13

## ACROSS

1. The right place for Grahame to open Ratty's account (1,9)
6. Just warm, not high, bright heat ( 4)
9. Fractionally, in marriage, she's usually described more than good (6,4)
10. Goes on encouraging, especially re laying (4)
11. "Give him a centimetre and he'll take kilometre" – doesn't sound right . . . (4)
12. Clued from an unknown source (9)
15. From out of the blue, oddly, the teenager produced this cuppa' (5,3)
16. From a tangle of aluminium some old students emerged (6)
18. Damage verb results from single claim of being double! (6)
20. Finally call when ground level is reached (8)
23. Angry display sort of swallowed here – now reasonably cool (9)
24. Sounds like upper class look out to sea (4)
26. Not completely on the level – insincere stuff (4)
27. Initially, the United Nations statements are found impartial here (10)
28. Sounds like a really nasty type from this country (4)
29. Look carefully – this is a late steer for some great property (4,6)

## DOWN

1. Old pop group undecided on blood group (4)
2. Past, present, future? Very concentrated on verb usage (7)
3. This pretty clumsy ten line heap needs sorting out (11)
4. Ultimately, despite how it sounds, this isn't the best way to be going (8)
5. With an apocryphal light touch and a good press, he got his own column (6)
7. The thing to be up in arms about on a passenger plane? (7)
8. They may get you in the end . . . or rather, from theirs (4,6)
13. It may be this lag's wee ploy makes such a directory useful (6,5)
14. I'm what? Me? That's absurd! Of course I'm right (10)
17. A sylvan Spring ringer (8)
19. Spice it up! Take 'em and stick 'em in pot for taste (7)
21. No energy! It's too much! Just sort out 4 vowels and 3 consonants, in order! (7)
22. For slangy snack, reorder need's arisen here (6)
25. Identified initially as suffering from 21 (4)

(ANSWERS ON PAGE 51)



# PANGBOURNE RIVER MEADOWS

## PANGBOURNE RIVER MEADOW FROM 1936 TO THE PRESENT DAY

Following on from the article a few editions ago which outlined the recent history of Pangbourne Recreation Ground, the other obvious public space to focus on is Pangbourne River Meadows which, without doubt are the 'Jewel' in Pangbourne's crown largely unchanged over many years and now protected for generations to come. The Meadows today are enjoyed by thousands of people each year including ramblers, dog walkers, SUP users and canoeists, boaters, anglers and people who just want to be in the open air, and enjoy the beautiful views of the River Thames and over towards the hills of South Oxfordshire.



### HISTORY

The Meadows and Thames have always proved important to the history of Pangbourne, whether that be for the day to day movement of goods by river as can be seen by the existence of the "tow path" that ran alongside for much of the 19th century, serviced by Hobbs Boatyard (modern day Boathouse Surgery), the era of "messaging about in row boats" near the wharf or as part of the war effort when it was used to house troops and practise bridge building.

Until as late as the 1970s/1980s cattle were grazed on the Meadows and the area was entirely enclosed. For many years prior to that the cows were walked home over the bridge to a farm in Whitchurch. Access to the Meadows at times was solely via a small gate on the verge immediately next to the bridge. In later years there was a proposal to plant formal flower beds and planters and create a more "park" like space. This suggestion was rightly rejected by the National trust in favour of keeping a more "natural aspect".



### 1936 PURCHASE AND PROTECTION OF THE MEADOWS

Until the 1930's the land at the meadows like that at the recreation ground was owned by a variety of private landowners and it was only then that it came into public ownership in the form that we know it today. Pangbourne "River Meadows" actually consists of two sections, the first of which is owned by Pangbourne Parish Council with the further section held by the National Trust.

This first section (or "big meadow" as it was commonly known) consists of 9 acres and 18 poles of land, purchased by Pangbourne Parish Council through public subscription on 14th November 1936 from Maurice Wilfrid Saunders for the grand sum of £850.

This purchase followed a letter to The Times from the then Chairman of the Parish Council and Sir Arthur Griffith Boscawen, Clerk to the Council.



Together with the C.P.R.E (Campaign for the Protection of Rural England) they launched "An Appeal for the Preservation of Pangbourne Riverside Meadow" which was "threatened by modern development".

Time was short with the option to purchase due to expire at the end of June 1936. "All lovers of the Thames are invited to send donations marked 'PANGBOURNE MEADOW PRESERVATION FUND' . . . c/o Lloyds Bank".

The appeal was successful and the meadows were saved for the public.

*"How frail generally is the tenure still of much of the beauty of the Thames valley . . . what damage can be done by the misuse of a comparatively small stretch of meadowland when it happens to lie in such a position that its misuse may mar the peace and dignity of the scene for ever."*

The Appeal, however did not raise sufficient funds to purchase the whole Meadows as one conveyance and very shortly afterwards on 16th November 1936 the remaining portion of 6 acres was purchased by the National Trust (shown red) with covenants placed on the section purchased by the Parish Council. The National Trust section forms the extension, to the river, of the fence between the Recreation Ground and modern day Meadow Farm.

1. *Journal of the American Medical Association*, 1997; 277: 1033-1038.

...and before the ruler whose

Over the years, a sec-

The Parish Council permits access to the River Meadow via the track to contractors keeping the grass cut, the National Trails Association so they are able to carry out their work, and to enable cars to park on the River Meadow once a year for the Village Fete. The Parish Council has recently appointed our Open Spaces Warden, who amongst other things acts as River Warden to ensure boats are moored within the guidelines. Like the Recreation Ground , Bye Laws are in place over these areas.





# PANGBOURNE RIVER MEADOWS

---

## MORE RECENT TIMES (GOOD AND BAD)

The amenity of the River Meadow plays a big part in the life of Pangbourne; the annual Village Fete is enjoyed by hundreds of residents and visitors, activities at the Dolphin Centre encourage many people to be outside on the river in their canoes and kayaks, and school outings take place along the riverbanks. Pleasure boats stop at the hardstanding during summer months. The Meadows are as popular as ever.

Unfortunately, having such a beautiful part of Pangbourne has inevitably attracted less welcome visitors. There have been two recent incursions by travellers onto the River Meadow, with the resulting clean-up costs. Following the second incursion, the Parish Council replaced the existing five bar gate onto the track with something more robust which should be kept closed and locked, together with height barriers to deter larger vehicles. Adventure Dolphin have enhanced their security with the addition of rising bollards and a new gate to the River Meadow.

Sadly, there is an ongoing issue with the use of drugs both on the River Meadow and adjacent Recreation Ground. The Parish Council currently has a planning application in to install CCTV, which should act as a deterrent as well as being able to identify those who misuse the River Meadow.

As the summer continues, the River Meadow becomes a 'magnet' not just for individuals and families coming to enjoy the space and beautiful views but also some large groups of people who gather there. Whilst we welcome groups who meet peacefully with the appropriate social distancing, and who leave the meadows as they find them, there have been several incidents of fighting, noise issues late at night as well as mountains of rubbish, broken glass and burnt out BBQ's all to be cleared up afterwards (at an additional cost to the Parish Council). Each incident is reported to the Police, who, despite their limited resources, have been very helpful in trying to curtail this anti-social behaviour. You may have seen the recent mounted patrols which took place in July.

Pangbourne Parish Council is determined to preserve and protect the River Meadow for all the local community to enjoy safely and we are very grateful to all the villagers who volunteer to assist in clearing litter, and act promptly in alerting the Police to antisocial behaviour. Please contact us with your mobile phone number if you would like to join our "Litter Heroes" WhatsApp group. If you witness anti-social behaviour, you should phone the police on 101 unless urgent intervention is required.

If you have any other ideas about improvements that could be made, then we are always keen to hear them.

Do you have any memories or old photos of the Meadows we would love to hear from you?





## NEIL HOULDEY

### *Quality Painting and Decorating*

- All types of interior and exterior work completed
- Advanced City & Guilds qualified
  - General maintenance and repairs undertaken
- Gold CSCS card accreditation
  - 30 years experience
  - Fully insured
- Pangbourne and surrounding areas

**07731 476100 • 0118 9845532**

**neil.houldey@yahoo.com**

**www.neilhouldeyqualitypaintinganddecorating.com**

## Shaun Guard

### TV & WIFI SERVICES

- **Aerials** - supplied, repaired & poor reception solved
- **Satellite** - Sky Q dish upgrades, discreet dish installations also foreign TV
- **Internet** - blackspots cured, data cables to your TVs / computer
- **TVs** - hung on your wall or set up & tuned
- **CCTV & Door Entry** - domestic installations

**Call Pangbourne 01189 639113**  
[www.oxfordaerials.co.uk](http://www.oxfordaerials.co.uk)

## ALCOHOL COUNSELLING

*Are you worried about your drinking or  
about the drinking of someone you love?  
If so, I can help.*

### QUALIFICATIONS:

MSc in Addiction Psychology & Counselling from London South Bank University  
 Member of the British Association of Counselling & Psychotherapy (BACP)

### PLEASE VISIT MY WEBSITE

[stewartkennedycounselling.com](http://stewartkennedycounselling.com)

Please call, text or email Stewart:

**07711 872 548    [stewartmkennedy@sky.com](mailto:stewartmkennedy@sky.com)**

## CMC Boiler Services Ltd



**01491 873535**

*...and trusted locally for 45 years*

- \*Boiler servicing, repairs & installations
- \*Gas fire service, repairs & installations
- \*Landlord gas safety certificates (CP12)
- \*Chemical power flushing & descaling
- \*Oil, gas, LPG & renewable energy



[www.cmcboilerservicesltd.co.uk](http://www.cmcboilerservicesltd.co.uk)

## COMMERCIAL WORKSHOPS / BUSINESS UNITS TO LET

VARIOUS SIZED BUILDINGS ON A SECURE  
GATED YARD IN WOODCOTE.

PLEASE CALL 07833 916 846

## SELF STORAGE

VARIOUS SIZED STORAGE UNITS ON A  
SECURE GATED YARD IN WOODCOTE.

**FROM £60 PER MONTH INCLUDING VAT**

FLEXIBLE TERMS, BUBBLE WRAP  
AND BOXES AVAILABLE

PLEASE CALL 07833 916 846





## SPB STONEWORKS LTD



Tel: 01189371827 or 07971881504

Visit us @ [www.spbstoneworks.co.uk](http://www.spbstoneworks.co.uk)

Email: [simonbeale@spbstoneworks.co.uk](mailto:simonbeale@spbstoneworks.co.uk) or [admin@spbstoneworks.co.uk](mailto:admin@spbstoneworks.co.uk)

Special offers on all types on memorials from Headstone, Full memorials, Cremation stones, Childrens memorials & Vases  
FREE NO OBLIGATION QUOTES and FREE FULL COLOUR BROCHURE ON REQUEST



- MONUMENTAL STONE MASONS.
- SUPPLYING ALL TYPES OF MEMORIALS & HEADSTONES
- 30 YEAR GUARANTEE ON ALL NEW & REPAIR WORK
  - MEMBERS OF BRAMM, NAMM, AND THE GUILD OF MASTER CRAFTSMEN
- RENOVATIONS & CLEANING OF EXISTING MEMORIALS
  - ADDITIONAL INSCRIPTIONS ALL STYLES
  - REPAIRS & RE-LEVELLING
- FAST & FRIENDLY FAMILY RUN COMPANY



**Up to 70% Cheaper than Funeral directors  
with 100% Guarantee to beat any memorial quote**

Showroom by appointment

Unit 3 Old Mill Trading Estate, 61 Reading Road, Pangbourne RG8 7HY



### Duncan Agar Painter and Decorator

- Highly Experienced, Professional Tradesman
- All Aspects of Interior and Exterior Decorating
  - Traditional and Modern Finishes
  - Period Properties a Speciality
  - Free Quotations and Advice
  - References Available

Tel: 0118 971 2340  
& 07787 552 983

### Reflexology for all ages



APPOINTMENTS AT PANGBOURNE & BRADFIELD COLLEGE SPORTS COMPLEX

Contact: Angela Mitchell (MAR)

T: 07909 992348

[www.indigoblureflex.co.uk](http://www.indigoblureflex.co.uk)



- Osteopathy & Cranial Osteopathy
- Podiatry & Chiropody
- Sports & Remedial Massage
- Acupuncture
- Reflexology
- Counselling - Adults & Adolescents
- Hypnotherapy & NLP
- Thai Yoga Massage
- Homeopathy
- Nutrition

Some of the conditions we treat at the Centre:

Back Pain Headaches Neck Pain Sports Injuries Foot Problems Sciatica  
Muscle Tension Whiplash Smoking Cessation Weight Control Stress  
& Phobias Dietary advice for IBS

Visit our website to see what else we can treat [www.thealewellbeingcentre.co.uk](http://www.thealewellbeingcentre.co.uk)



37 High Street, Theale,  
Reading RG7 5AH  
0118 930 3535  
[www.thealewellbeingcentre.co.uk](http://www.thealewellbeingcentre.co.uk)

# PANGBOURNE PLACE-NAMES

---

## MANSARD MEWS

I am very grateful to Richard Stone for the paragraphs which follow, setting out clearly the history over the last fifty years of the area around Mansard Mews, and to Ian Crimp for the Mansard Attics photograph.

"I think that **Mansard Mews** derives its name from **Mansard House**, (marked yellow on the plan and now called **Mansard Attics**), on the opposite side of and adjacent to **No. 2 Horseshoe Road**. This building was built originally for business use but has now been reconfigured for residential use. It has a mansard roof, hence its name.

Mansard Mews was developed several years later and again, I think it derives its name from the fact that a man called Ted Butler ran his PR business as a tenancy from **Bourne House** (marked blue on the plan), built and owned by Peter Marriott, which originally stood where Mansard Mews is situated today. Bourne House was built in the late 1960s/early 1970s where the old "Village Hall", constructed of timber and corrugated sheeting, originally stood for many years, before the current **Village Hall** was built in the grounds of Pangbourne Rectory in the early 1950s. The old hall was used not only for meetings of all sorts (including the distribution of concentrated orange juice and milk powder after WW2!!), but also as a Nursery School (which my older sister and brother attended), run by Miss Grist who previously ran Sulham School at the bottom of Sulham Hill, hence the old hall became known as "the Polytechnic" and the pathway that led up to it from Reading Road and on up to the top of Horseshoe Road became "**Polytechnic Alley**". There was also a pathway to it directly from Horseshoe Road, (again blue on the plan), which was a nice easy access from Little Orchard, my family home.

Ted Butler subsequently purchased **Bourne House** and also purchased a piece of the adjacent garden of **36 Reading Road** (green on the plan) for car parking space for it. Subsequently, he moved his business from Bourne House to Mansard House and the site of Bourne House was redeveloped by him and he gave it the name of **Mansard Mews**, maybe to reflect his involvement in its development.

The adjacent property marked **No. 1 Horseshoe Road** (pink on the plan) was also included in the development of Mansard Mews. No. 1 was part of a larger property which was originally Frank Purvey's engineering business, which he later covered in pre-cast concrete garages which he let out. This was then later still redeveloped into what is now **Graphic House** and **Abacus House**. Ted Butler managed to acquire No. 1 Horseshoe Road after Mr and Mrs Purvey had died, and having demolished the original house, which Mr Purvey had built himself out of concrete blocks he made himself in his yard, built a new house which he sited a little over to the left of the original, which then enabled him to widen the pathway into the roadway serving Mansard Mews as can be seen today.

So originally, there were just two houses, No. 1 Horseshoe Road and No. 36 Reading Road (my Grandparents' home) plus The Polytechnic on the three combined properties, whereas today there are eight homes plus several offices and business properties on the overall land involved. Plus ça change!

Whilst I cannot verify with complete accuracy all of the above facts, I am certainly confident of the majority of them. I have merely taken two plus two of them and added some conclusions to make them into four!! I am more than happy to stand corrected."

The *mansard* roof is named after François Mansart, the most accomplished of 17th century French architects. He was the first to make extensive use of this double slope roof, which has the advantage of maximising the habitable space under the eaves.

Officially, the term *Mews* derives from French *muer*, "to moult", the singular 'mew' being a cage where a hawk was confined while it moulted. However, I cannot help feeling that the term was reinforced by the mewing sound made by some members of the hawk family, if the kites and buzzards that we regularly hear over Pangbourne are anything to go by.



*Mansard Mews area.*



*Mansard Attics.*



# PANGBOURNE PLACE-NAMES

The concept of royal mews goes back to Richard II, 1377-1399, whose falconry birds were kept at the King's Mews in London, on the site of the present National Gallery. The building was destroyed by fire in 1534 and rebuilt as stables, but kept the name 'Mews'. This name for domestic stables was taken up in London in the 17th century, and, once the Royal Mews had been transferred to Buckingham Palace, it became extensively used in the later 19th century to refer to service streets and the stable blocks in them, as fashionable London expanded westwards. These mews had stalls and a carriage house on the ground floor, and accommodation for the coachman and his family above. Cars have since replaced horses, and in the 21st century mews houses make very desirable residences.



*Royal Mews.*

Falconry, the hunting of small game with a hawk, may have started in Mesopotamia, roughly modern Iraq, with the earliest written accounts from c. 2,000 BC. It came into Europe c. AD 400, remaining a status symbol among the noble classes. Anglo-Saxon England practised falconry widely, and this form of hunting small game reached its height as late as the 17th century, at which period it was replaced by firearms.



*London Mews in the 19th century . . .  
. . . and today.*

The general term for this activity in Anglo-Saxon was based on the hawk, *hafoc*, of Germanic origin and referring to the bird 'grasping' its prey. It was obviously associated with **Hawkridge**, Bucklebury, in 956 AD, but perhaps less so at **Haughurst**, Baughurst, 'hawk frequented wood (*hyrst*)', *Hauekehurst* in a document of 1256. The term 'hawking' to refer to flying hawks gradually became discredited, mainly because of its apparent association with 'hawkers hawking goods', although these words actually have a different derivation.



The French term based on Old French *faucon* mostly prevailed, since falconry requires time, money and space, not available in early Medieval England other than to Norman landowners. The word derives from Latin *falx*, referring to the 'scything' of the bird's talons as it takes its prey. The man who flew such birds is recalled at **Faulkner's Piddle** ('small enclosure'), Padworth, in 1838.

Unmissable in the skies, as we in Pangbourne know all too well, is the kite. It probably features at **Kiddington Farm**, Streatley, *Cutendene* in 1250, 'valley of the kite', and definitely at **Kite Hill**, a field name at East Ilsley. A scavenger by nature, it is even present in a major place-name, **Kites Hardwick** ('herd farm') in Warwickshire, the name in Anglo-Saxon England referring to the part of a manor devoted to livestock farming. Kites must have been particularly noted there for scavenging carcasses. In the medieval filth of major cities, especially London, kites were regarded as useful if indiscriminate refuse collectors, but the refuse could include all sorts of items to line their nests. Shakespeare in *The Winter's Tale* warns: "When the kite builds, look to lesser linen" – in other words, knicker-nicking.

The most distinguished bird of prey must be the eagle, but like the art of falconry, it too first gained eminence in the East, in ancient Asian civilisations. Referred to as *earn* in Anglo-Saxon, the bird is remembered locally at **Earley**, 'eagle wood (-ley)', and also in the Christian name *Arnold*, literally 'eagle power (-old, from *weald*)'. Indeed, the bird was so revered amongst the Anglo-Saxons that "eagle's marrow" was prescribed for various ailments. However, as the bones of birds do not contain marrow, this ingredient must have had a remarkably high scarcity value. Please do not go looking for it in Mansard Mews.



*Red kite's nest.*

*Nigel Suffield-Jones*



## **Cleaver Cars Ltd**

Independent Citroën Specialist

♦  
Servicing, repairs and MOTs  
All makes and models

♦  
Free local collection  
and delivery service

♦  
**Tel. 0118 957 6405**

67 Loverock Road  
Reading, RG30 1DZ

Email: [cleavercars@btconnect.com](mailto:cleavercars@btconnect.com)

[www.cleavercars-reading.co.uk](http://www.cleavercars-reading.co.uk)



01635 202262 07531 277668  
[trevor@howardthesweep.co.uk](mailto:trevor@howardthesweep.co.uk)

- Guild of Master Sweepers & HETAS accredited
- Traditional & power sweeping methods
- Root clearing & water flowover removal
- Chimney & flue repairs
- Bird & nest removal
- Sticking & repairs
- Insurance certificates
- Fully insured

**Howard the Sweep**  
Cleaner chimney sweeping  
& stove installations

**GUILD OF MASTER SWEEPERS**  
Master Sweep

**HETAS**



### **ONLINE, MINDFULNESS COURSE (MBSR)**

#### **Gold Standard**

Wellbeing • Stress Reduction • Pain Relief

**TUESDAY'S OR THURSDAY'S: 7 – 9pm**

**From 15 and 17 September for 8 weeks**

No classes half term

Secure video link and technical support provided.

Cost: £150; Qualified & Registered teacher on BAMBA

Em: [bonnie@positiveconsultancy.net](mailto:bonnie@positiveconsultancy.net) M: 07957 571620

## **PICTURE FRAMING PICTURE RESTORATION**

**R. G. Bridgewater**

(established in the trade since 1956,  
apprenticed at Reading Fine Art Gallery,  
also with Picture Crafts of London Street, Reading)

- Oils and pastels restored
- Watercolours, engravings, prints de-foxed and cleaned
- Conservation mounting and framing
- All aspects of framing undertaken (tapestries, silks, butterflies, medals, etc)

**Tel: 0118 984 4622**

## **Monumental & Masonry Craftsmen**

Family run business since 1858

**A.F. JONES**  
33 Bedford Road  
Reading  
RG1 7EX

Tel: 0118 9573537

email  
[info@afjones.co.uk](mailto:info@afjones.co.uk)

**E.T. SHEPPARD**  
36 Reading Road  
Henley on Thames  
RG9 1AG

Tel: 01491 574644

email  
[info@etsheppard.co.uk](mailto:info@etsheppard.co.uk)

**Specialists in all stonework  
Memorials, Restoration, Kitchens, Bathrooms**

## **Plumber & Bathroom fitter**

**From Dripping Taps to  
Complete Bathroom Design  
and Installation.**

Full Quality Refit, all Tiling,  
Construction, Alterations etc,  
from start to finish.

**Free Advice and Quotes.  
Friendly, Reliable and Insured.**

**Happy to undertake  
the smallest of jobs**

**Richard – 0771 333 6661  
or 0118 9676384  
(answering machine)**



## PANGBOURNE AND WHITCHURCH SUSTAINABILITY NEWS

Sadly as I write this article the pandemic continues to rage across the world causing many deaths and much suffering to individuals and economies. We have had a brief respite in the UK over the last two months, but infection rates are rising again across Europe. The management and eventual destruction of the virus understandably requires a vast amount of political attention and this means we have to lobby for environment changes with more vigour!

PAWS continues to work with the Parish Council over issues of increased tree planting in the area, increasing the number of cycle racks in the villages and working to create a climate action plan which will enable Pangbourne to become a carbon neutral environment. So whilst we are unable to run our usual programme of events we do plan to carry on meetings virtually where possible. Jackie Hoskins, our Chair has worked with Jo Smith our Secretary to propose that for the October meeting we ask our speaker to present virtually and for November we are hoping that people will be able to view our chosen film and come together via zoom for discussion. Please check on our website and Facebook for information about these events.

However, we are hoping to have our ten year celebration on September 20th outdoors at the Whitchurch maze. This is the date of our apple pressing day and we are seeking advice as to how this might still go ahead safely and observing social distancing. This will be a picnic event and we really hope this can take place. Look on our website and Facebook page and look out for posters.

We will definitely have our planning meeting on January 14th 2021 hopefully meeting in Pangbourne Village Hall otherwise via zoom.

One thing lockdown enabled me to do was to get to grips with some reading and I know many others have enjoyed having more time to look at podcasts, TED talks, books etc. There is a wealth of information about living well in our environment and why it is essential we put our relationship with the natural world at the top of our priorities.

I returned to *Man's Search for Meaning* by Victor Frankl at the beginning of lockdown. In this book Frankl describes his experience of life in four Nazi concentration camps where he laboured between 1942 and 1945. His parents, brother and pregnant wife perished. A psychiatrist, his observations of other inmates and his own experiences led him to argue 'that we cannot avoid suffering but we can choose how to cope with it, finding meaning in it, and move forward with renewed purpose'. He contends that our primary drive in life is the discovery and pursuit of what we find personally meaningful.

It seems to me that this is very pertinent to how we cope with the 'not knowing' element of our experience of Covid-19. It is extremely frustrating not to be able to plan for the immediate future, but it does give us an

opportunity to explore what matters to us and help us to know where to direct our energies.

In respect of our environment and the difficulties facing us in making the changes necessary to prevent the worst outcomes of climate change I think it is useful to understand how and why we have arrived at our present environment crisis and recommend two books by Naomi Klein: *This Changes Everything* and *No Is Not Enough* which is described by Emma Thompson as 'An absolute must-read this book is inspiring and energy-giving. Like a little sun.'

The recently published *The Future We Choose Surviving The Climate Crisis* by Christiana Figueres and Tom Rivett-Carnac is reviewed by Mark Ruffalo as 'inspirational, compassionate and clear. The time to read this is now'. This book is a passionate call to arms from the former UN Executive Secretary for Climate Change and the Senior Political Strategist for the Paris Agreement. Practical, optimistic and empowering, this book is a book for every generation, for all of us who feel powerless in the face of the climate crisis.

One of the most disturbing facts of the Covid-19 pandemic is how deeply we are divided as a nation and a world. The immense inequality of life experience is very relevant to the damage caused by climate change. The most disadvantaged, the poorest people suffer the worst effects of climate change by virtue of where and how they live in the same way that they are suffering during the pandemic. The Sunday Times bestseller, *Utopia For Realists, and How We Can Get There* by Rutger Bergman offers a way in which society can be constructed with visionary ideas that are implementable. Jeanette Winterson describes it as 'a practical set of ideas for how the next generation can do better'.

And lastly! A book I have related to during lockdown as I have tended my allotment and garden is *The Well Gardened Mind* by Sue Stuart-Smith, a psychotherapist. Edmund De Waal describes it as 'A compelling and deeply moving account of how profoundly our well-being can be affected through contact with gardening and the natural world', and Isabella Tree writes: 'Riveting, inspiring and often very moving . . . A lively, compassionate exhortation for us all to get our hands back in the soil!'

Many of us have enjoyed the beautiful weather of this spring and summer and have had time to listen to the birds, spent more time outside noticing our fantastic environment, recognising how much better we feel from being in nature, but we also recognise we are in the middle of a battle to protect our natural world. Join us in PAWS to do what we can locally, and join up to Greenpeace, WWF, Friends of the Earth, Woodland Trust, BBOWT, 38 degrees to lobby and many other groups to support others working so hard to care for our source of life.

Heather Thorne

Visit our website [www.pawsg.com](http://www.pawsg.com) and join our Facebook group:  
PAWS (Pangbourne & Whitchurch Sustainability)



## PANGBOURNE PARISH COUNCIL

Tel: 0118 9841118 Email: [clerk@pangbourne-pc.gov.uk](mailto:clerk@pangbourne-pc.gov.uk) Website: [www.pangbourne-pc.gov.uk](http://www.pangbourne-pc.gov.uk)

### FOCUS ON PANGBOURNE EXHIBITION



West Berkshire Museum • 14 July 2020 – 28 February 2021

'Focus On' is a series of exhibitions that celebrate the heritage, community and landscape of our much loved parishes within West Berkshire.

This exhibition will explore Pangbourne's history and archaeology through objects from the Museum collection and loans from the local community.

Our second floor galleries host a series of special exhibitions, along with gallery 5 which can be hired to display original artwork, sculpture and crafts.

*Museum open Wed-Sun, 10am-4pm*

*Entry is free but donations are most welcome*

### CHILTERN WALK PLAY AREA

This month new football nets were installed on the goals at Chiltern Walk. It is great to see them being well used already. We would request that users of the goals and this play area are mindful of and considerate to neighbouring residents.

Please dismount cycles in this area especially on the pathways.

We are currently looking at sourcing a replacement bin and new signage for this area.



### GOOD NEIGHBOURS SCHEME

As we progress through the pandemic and lockdown hopefully continues to ease, the need for the Good Neighbours Scheme is beginning to lessen. Many of those who volunteered to help with shopping and prescriptions are returning to work and many of those isolating or shielding no longer need so much support. The Scheme will continue to operate for as long as needed for those for whom going out is still difficult and will remain in place in case it is needed again in the future.

Our thanks go to all those who have volunteered to date and please do still continue to contact us if you need support.



## DRIVE THROUGH FLU JAB VOLUNTEERS WANTED

The Boathouse Surgery is looking for volunteers to help with a drive through flu jab clinic this winter.

They're looking for six people to volunteer at Pangbourne College for each of the following dates (subject to change) 3rd, 4th, 24th and 25th October between the hours of 8am and 4.30pm. The day will be split into two sessions, the morning session will run 8am to 12.30pm and the afternoon session will run 1pm to 4.30pm. Volunteers will be welcome to help all day or for just one morning/afternoon session.

The volunteer will need to be 18 years +, physically fit, able to stand for long period of time and happy to speak to member of the public.

You will be asked to welcome patients, direct traffic through the one way drive through system and be a vaccine runner. Training will be given on the day and you will be required to sign a confidential agreement before the event. DBS checks are not required for this role and strict social distancing measures will be in place on the day.

Please contact Lucy on 07933 944 556 or the surgery for more information.

## PARISH COUNCIL GRANTS

The Parish Council have a small amount of funds remaining in this year's grant allowance. Bids can be made by local groups and charities and applications should be made to the clerk in the first instance. Grant requests will be considered at the September meeting and so applications should be made by the end of August.

## PANGBOURNE HILL CEMETERY WORKS

Residents who visit Pangbourne Hill Cemetery may have noticed recent landscaping works taking place. Drainage improvement works were completed by our Chairman and Chair of Grounds at the lower end of the hill in preparation for a new path and soil and rubbish have been cleared from the top end of the cemetery in preparation for a new area for spoil and green waste. It is hoped that the skip will soon be removed. These have been replaced by four new wheelie bins which have already arrived and are awaiting a smart new black and gold housing.

Please do use these new bins from now on. Two will be for green flower waste and the other two will be for plastic waste and flower wrappings. Please do take ALL other waste home with you and respect this peaceful space.



## SECURITY AT THE RIVER MEADOWS

Unfortunately, there have been several recent instances of tampering and criminal damage to the locks and mechanism of the height barrier gate on the track at the River Meadows. This has been repaired but has sadly been costly for the parish. All instances have been reported to the police.

## SCAMS

Unfortunately, there have been a number of recent scam attempts in the parish that the police have asked us to highlight to residents. Please make yourself aware of these and report anything suspicious to the police via 101 or 999 if you feel threatened or in danger. Please also make a report to [actionfraud](https://www.actionfraud.police.uk).

### COURIER FRAUD

In early August a local resident received a call from a male reporting to be from a bank and they were told to go to the Reading branch to hand over their bank cards. They were told that someone could come to collect the cards but the victim said no. A male then came to the door to take the cards, whilst the aggrieved was on phone to the male reporting to be from the bank. The male at the door was also trying to get the pin number of the cards. The aggrieved refused to give the cards and pin numbers.

On another similar incident in Pangbourne, the aggrieved received a call stating her bank cards were out of date, and that 'Simon' would be bringing new cards. A male came to the door. He gave the aggrieved an envelope which actually contained Lyca mobile cards. The aggrieved saw a small white car with a black roof drive away.

### "NOTTINGHAM KNOCKERS"

#### What are Nottingham Knockers?

Door-to-door traders who try to sell goods on the doorstep, often cheap household items. They will often claim to be on a rehabilitation scheme trying to find work and may have a false trading permit or other forms of ID.

Nottingham Knockers are not part of any recognised rehabilitation scheme. The government-backed Community Payback scheme does not involve door-to-door sales.

#### What is the issue?

The common will cover a number of streets looking for a vulnerable victim they can scam. Concerned residents say they feel vulnerable in their own homes when they are approached in this way. Police say streets being targeted by the Nottingham Knockers often see an increase in distraction burglaries.

They say those going door-to-door often have long extensive criminal histories and anyone who gives them money may find themselves the target of other scams including rogue builders and other groups.

**Police Emergency:** t: 999

**Action Fraud:** t: 0300 123 2040 w: [www.actionfraud.police.uk](https://www.actionfraud.police.uk)

**Non-urgent matters:** t: 101



## KOOTH YOUTH COUNSELLING SERVICES

A new online support network has been launched to help children and young people struggling with mental health difficulties. The Youth Counselling service, called Kooth, will complement a range of other mental health support packages provided for youngsters across Berkshire West. It's primarily aimed at dealing with issues around Covid but will play a key role in supporting the young people re-adjust to life post-Covid.

Kooth, which is live now, provides a seven day a week online platform with a trained counsellor available until 10pm each night. It offers self-help and useful psychological information; moderated peer support alongside supervised and professional support. There is also an option of around eight sessions with the same counsellor if this is felt the best way of helping the young person.

There's access to a magazine with personal experience stories and self-help tips from other young people, a discussion board, live chat facilities and support for youngsters to write a daily journal to reflect on how they are coping.

The service, which is aimed at 11 to 18 year olds, is being pioneered by Berkshire West Clinical Commissioning Group (CCG) in partnership with the three Local Authorities with support from Berkshire Healthcare NHS Foundation Trust and our local voluntary sector. It's already up and running in 140 other CCG areas across the country, and last year supported more than 134,000 children and young people.

Covid has placed specific challenges on young people – the sudden interruption of their school life, separation from their friends, social isolation, being at home with family members who may be worried about jobs and finances, concerns about health – all on top of the other issues young people struggle with as they are growing up," she added.

Full details at <https://www.kooth.com/> and on the Berkshire West CCG website: [www.berkshirewestccg.nhs.uk](https://www.berkshirewestccg.nhs.uk).

## PLANNING APPLICATIONS REVIEWED BY THE PARISH COUNCIL SINCE LAST ARTICLE

APP NO:	PROPOSAL	RECOMMENDATION
20/01318/ HOUSE	Single storey glazed rear extension, blocking up of 1 No. window and insertion of 1 No. velux window. 4 The Moors, Pangbourne	NO OBJECTION /COMMENT
20/01324/ FUL	To install CCTV at Pangbourne Recreation Ground and track by the meadows which will involve erecting 3 x 6 metre poles to carry cameras to cover the playground area, car park, track and meadows. It will entail three bases to be constructed to hold the poles. The base dimensions will be 0.55 metres in depth and 1.1m x1.1m square below ground level. Recreation Ground, Thames Avenue, Pangbourne	NO OBJECTION
20/00270/ HOUSE	Change front garden to a driveway and add a dropped kerb. 60 Reading Road, Pangbourne APP/W0340/D/20/3250095 – withdrawal of comments	NO WITHDRAWAL OF COMMENTS
20/01330/ HOUSE	Demolition of existing single storey side extension and proposed single storey extension to front and side of existing dwelling 23 St James Close, Pangbourne	NO OBJECTION
19/02333/ FULD	Retention of existing house, demolition of existing barn building and greenhouse. Division of plot to allow for the construction of a new family dwelling and double garage. New double garage outbuilding for the existing house and associated works to the driveway Three Cliffs, Bere Court Road, Pangbourne APP/W0340/W/20/3249672 – Planning Appeal	NO WITHDRAWAL OF COMMENTS
20/01504/ LBC2	Changes to First and Second Floor areas to form Bedroom suites and bathrooms and changes to the Servants stair area to allow new service routes and to change stair flights from Ground to First floor. Bere Court, Pangbourne RG8 8HT	NO OBJECTION
20/01534/ LBC2	Changes to Gutter area of Link Building to create new deeper gutter along line of Servants wing and to replace lead in gutter with Saranfil. Bere Court, Pangbourne RG8 8HT	NO OBJECTION
20/01476/ PACOU	Application to determine whether prior approval is required for a proposed change of use from light industrial (Class B1c) to Dwelling houses (Class C3) under Schedule 2, Part 3, Class PA of the Town and Country Planning (General Permitted Development) (England) Order 2015 (as amended). Proposal: to provide 1 x 3bedroom house with secure parking space and landscaped garden. Kiosks, Water Pumping Station, Tidmarsh Road, Pangbourne	OBJECTION
20/01337/ MDOPO	Application for permission to modify planning obligation dated 22/02/2016 of planning permission 15/03320/OUTMAJ. Proposed modification: clarify liability of individual plot owners. Land North of Pangbourne Hill, Pangbourne	COMMENT

APP NO:	PROPOSAL	WBC DECISION
APPLICATIONS DETERMINED BY WEST BERKSHIRE COUNCIL:		
20/01206/ CERTP	Two Pergolas 4.2m x 4.2m in size with a maximum height of 3.5m with seating. Recreation Ground, Thames Avenue, Pangbourne	APPROVAL
20/01189/ TPW	Copper Beech – Reduce crown due to significant growth since last works (at least 10 years ago) and overall effective management of the tree. Reduce crown by 1.5m (each side) and the height of the tree by 2m. After pruning the tree will be approx. 13m (in height) and 12m wide. Beechlands, Flowers Hill, Pangbourne, RG8 7BD	APPROVAL
20/00954/ HOUSE	Single Storey Rear Extension 18 The Moors, Pangbourne RG8 7LP	APPROVAL
20/00919/ HOUSE	Single storey rear extension, demolition of existing conservatory and internal alterations. Hillside, Riverview Road, Pangbourne RG8 7AU	APPROVAL
20/00933/ HOUSE	Section 73: Variation of condition 2-approved plans of previously approved application 19/02308/HOUSE: First floor extension over existing flat roof and dormer window to attic 68 Horseshoe Road, Pangbourne RG8 7JL	REFUSED
20/00870/ HOUSE	Demolition of existing conservatory and erection of a two storey rear extension and single storey side and rear extension. 36 Reading Road, Pangbourne RG8 7JF	APPROVAL
20/00817/ HOUSE	Single storey pitched roof front extension 21 Chiltern Walk, Pangbourne RG8 7LE	APPROVAL
20/00831/ LBC2	Replacement of worn and damaged external floor tiles to the Whitchurch Road elevation 2-6 Whitchurch Road, Pangbourne RG8 7BP	APPROVAL
20/00726/ HOUSE	Ground floor infill extension to form additional family space 13 Horseshoe Road, Pangbourne RG8 7JQ	APPROVAL
20/01155/ CERTP	To install CCTV at Pangbourne Recreation Ground and track by the meadows which will involve erecting 3 x 6 metre poles to carry cameras to cover the playground area, car park, and track. It will entail three bases to be constructed to hold the poles. The base dimensions will be 0.55 metres in depth and 1.1m x1.1m square below ground level. Recreation Ground, Thames Avenue, Pangbourne	WITHDRAWN
20/00639/ HOUSE	Loft Conversion; New windows on ground floor and 1st floor. 1 Horseshoe Road, Pangbourne RG8 7JQ	WITHDRAWN
20/01324/ FUL	To install CCTV at Pangbourne Recreation Ground and track by the meadows which will involve erecting 3 x 6 metre poles to carry cameras to cover the playground area, car park, track and meadows. It will entail three bases to be constructed to hold the poles. The base dimensions will be 0.55 metres in depth and 1.1m x1.1m square below ground level. Recreation Ground, Thames Avenue, Pangbourne	APPROVAL

## SUBMISSION OF ARTICLES\* AND ADVERTS†

	COPY DEADLINE	DISTRIBUTED
Issue 159 – November/December	9th October	29th October
Issue 160 – January/February	4th December	7th January
Issue 161 – March/April	5th February	25th February

Please send all submissions to [pangbourne@heraldgraphics.co.uk](mailto:pangbourne@heraldgraphics.co.uk).  
Please bear in mind the distribution date when including dates in your articles.

(\*receipt of an article is not a guarantee of inclusion; †payment is required in full prior to publication)



**PAULBELCHER**  
**PROPERTY SERVICES OF PANGBOURNE**  
 T 01189843722 M 07888680834  
 paulbelcherpropertyservices@yahoo.co.uk

**ALL INTERIOR & EXTERIOR WORK UNDERTAKEN  
 AND COMPLETED TO A HIGH STANDARD  
 CALL OR EMAIL FOR FREE INDEPENDENT ADVICE  
 AND A NO OBLIGATION QUOTE  
 ALL WORK FULLY INSURED - NO JOB TOO SMALL**

**FAMILY TREE**  
 GROUNDS MAINTENANCE AND CONSTRUCTION  
 Garden Maintenance

- Fencing • Gates • Hedge cutting
- Decking • Patios • Grass cutting

**TEL. 07736 650 477**  
 email.familytreegmc@gmail.com

**Plant & tool hire for  
trade & DIY.**

Your first choice for the best  
 equipment, service and price.  
 Go to [www.didcotplant.co.uk](http://www.didcotplant.co.uk) to  
 check our online catalogue.



**DIDCOT PLANT**  
 PLANT AND TOOL HIRE FOR TRADE & D.I.Y.  
[www.didcotplant.co.uk](http://www.didcotplant.co.uk)  
**01235 814000**

**MADE TO MEASURE**  
*Curtains, Roman Blinds,  
 Cushions Covers, etc  
 at competitive prices.*

Call Caroline on  
 (0118) 9542448  
 or 07815 610 007

**Aylett Electrical**



Kevin Aylett – your local,  
 reliable, registered and  
 insured electrician.

- Domestic installations
- Testing and repair
- Free quotes and advice
- All maintenance and repairs undertaken

Blossomsend Cottage Blossom Lane Theale RG7 5BE  
 Tel: 0118 9302037 Mob: 07986 033 051



**LINDSAYS**  
 House Clearance

- Commercial clearances • Domestic clearances
- Man and van services • Garden clearance
- Sheds demolished • Attic clearance
- Fully licensed waste carrier
- Honest and reliable

Serving domestic and business customers  
 across Berkshire and the surrounding villages –  
 from single items to full house clearance.

**Get in touch for a FREE QUOTE**

0118 9019935 or 07889 851 600  
[lindsaysclearance@outlook.com](mailto:lindsaysclearance@outlook.com)  
 @lindsaysclearance

# Treating you like family from one generation to the next.

In a good way, of course...

## **We make buying, selling and letting easy for you.**

People come to us because they know we always do the right thing.

Because we get results and are always there when they need us.

And, most of all, because we always treat them like family...

## **Family values go such a long way...**

For more than 70 years, we've been treating people like one of our own – in Reading, Tilehurst, Pangbourne and beyond.

You'll find us friendly, knowledgeable, professional – and here for you.

With Patrick Williams, you're family.  
Give us a call and find out for yourself.

Reading: 0118 957 3579  
Tilehurst: 0118 942 0777  
Pangbourne: 0118 984 4444  
[info@patrickwilliams.co.uk](mailto:info@patrickwilliams.co.uk)



[www.patrickwilliams.co.uk](http://www.patrickwilliams.co.uk)

# USEFUL NUMBERS

## USEFUL NUMBERS

POLICE	Non-emergency number	101
CRIMESTOPPERS		0800 555 111
PANGBOURNE PARISH COUNCIL (at Village Hall)		
	<a href="http://www.pangbourne-pc.gov.uk">www.pangbourne-pc.gov.uk</a>	0118 984 1118
	Parish Office opening hours – Mon am, Tues am, Thurs pm	
CHAIRMAN OF PANGBOURNE PARISH COUNCIL		
	Peter MacIver – <a href="mailto:peterpangbourne@gmail.com">peterpangbourne@gmail.com</a>	07768 004844
VICE CHAIRMAN OF PANGBOURNE PARISH COUNCIL		
	John Higgs – <a href="mailto:jhiggs@pangbourne-pc.gov.uk">jhiggs@pangbourne-pc.gov.uk</a>	0118 984 4758
CLERK TO PANGBOURNE PARISH COUNCIL		
	Becky Elkin – <a href="mailto:clerk@pangbourne-pc.gov.uk">clerk@pangbourne-pc.gov.uk</a>	0118 984 1118
WEST BERKSHIRE COUNCIL		
	Switchboard	01635 551111
CITIZENS ADVICE BUREAU		01635 516 605
MP FOR READING WEST		
	Alok Sharma	0118 941 3803
SURGERY		0118 984 2234
	Emergency out-of-hours (7.00pm – 7.00am)	0118 976 7193
PHARMACY		0118 984 2935
LIBRARY		0118 984 4117
VOLUNTEER CENTRE		0118 984 4586
PANGBOURNE PARISH PRIEST		
	Reverend Heather Parbury – <a href="mailto:rector@pangbournechurches.info">rector@pangbournechurches.info</a>	0118 984 2928
FLOOD WARDENS		
	Kay Lacey	0118 984 2221 or 07889 231136
	Stephen Billyeald	0118 984 3368

## THE PANGBOURNE MAGAZINE

Production/Advertising/Finance:  
**Herald Graphics – 0118 9311488**

Submission of articles\* and adverts:  
**[pangbourne@heraldgraphics.co.uk](mailto:pangbourne@heraldgraphics.co.uk)**  
*(\*receipt of an article is not a guarantee of inclusion)*

Deadline for inclusion in the  
November/December Magazine:  
**Friday, 9th October 2020**  
*(for distribution end of the month)*

Distribution: Lucy Bromage – 07747 056193

Whilst every effort is made to ensure the accuracy of information printed in the Pangbourne Magazine, the Editor and publishers cannot accept any responsibility for the consequences of any errors that may occur. The opinions expressed in this magazine are those of the contributors and are not necessarily those of the Editor or of the Committee. Articles in the Pangbourne Magazine, or the information contained in them, may not be used or reproduced by other publications without the express permission of the Magazine Committee. Whilst care is taken to establish that our advertisers are bona fide, readers are advised to take precautions before entering into any agreement.



# CLASSIFIEDS

## ELECTRICIANS

### Aylett Electrical

Kevin Aylett – your local, reliable, fully qualified and insured, domestic electrician.

0118 9302037

Mob: 07986 033 051

## FUNERAL SERVICES

### A B Walker

See main advert on page 33.

Thatcham – 01635 873672

Tilehurst – 0118 304 0068

Reading – 0118 957 3650

## GARDEN SERVICES

**MOLES?** Are they ruining your lawn?

Call MoleMan Mark to get rid of them.

*British Mole Catchers Register accredited.*

07887 480014

## JEWELLERY REPAIRS

### Sandy Ebdon-Jackson B.A.

Re-stringing, re-designing, replacing lost parts etc.

Please message description and photo of required repair for quote.

07789 238557

## LAUNDRY/DRY CLEANERS

### Launderclean

4 Station Road, Pangbourne.

Launderette and dry cleaners.

0118 984 2197

## PAINTER

### Andy The Painter

Interior and Exterior Painting.

Fully Qualified and Insured.

07933 266874

andyblack007@outlook.com

## PLUMBER & BATHROOM FITTER

Happy to undertake the smallest of jobs.

Call Richard.

0771 333 6661

0118 967 6384

## CANTOR'S CROSSWORD NO. 13 ANSWERS

### Across

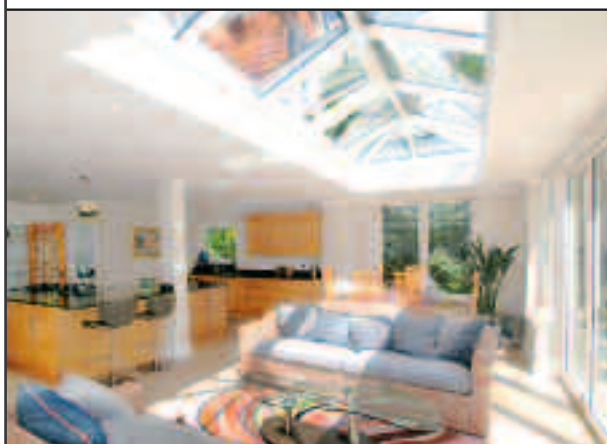
1 A RIVERBANK, 6 GLOW, 9 BETTER HALF,  
10 EGGS, 11 INCH, 12 ANONYMOUS,  
15 GREEN TEA, 16 ALUMNI, 18 IMPAIR,  
20 FLOORING, 23 TEMPERATE, 24 PIER, 26 CANT,  
27 UNWEIGHTED, 28 LAOS, 29 REAL ESTATE

### Down

1 ABBA, 2 INTENSE, 3 ELEPHANTINE,  
4 BEHEADED, 5 NELSON, 7 LEGROOM,  
8 WASP STINGS, 13 YELLOW PAGES,  
14 EGOISTICAL, 17 BLUEBELL, 19 PIMENTO,  
21 INERTIA, 22 SARNIE, 25 IDLE



individual  
conservatories  
and orangeries  
by **Malbrook**



please contact us to arrange a design consultation

TEL: 020 8780 5522 • EMAIL: [info@malbrook.co.uk](mailto:info@malbrook.co.uk)

[www.malbrook.co.uk](http://www.malbrook.co.uk)

# TRADITIONAL BRITISH VALUES

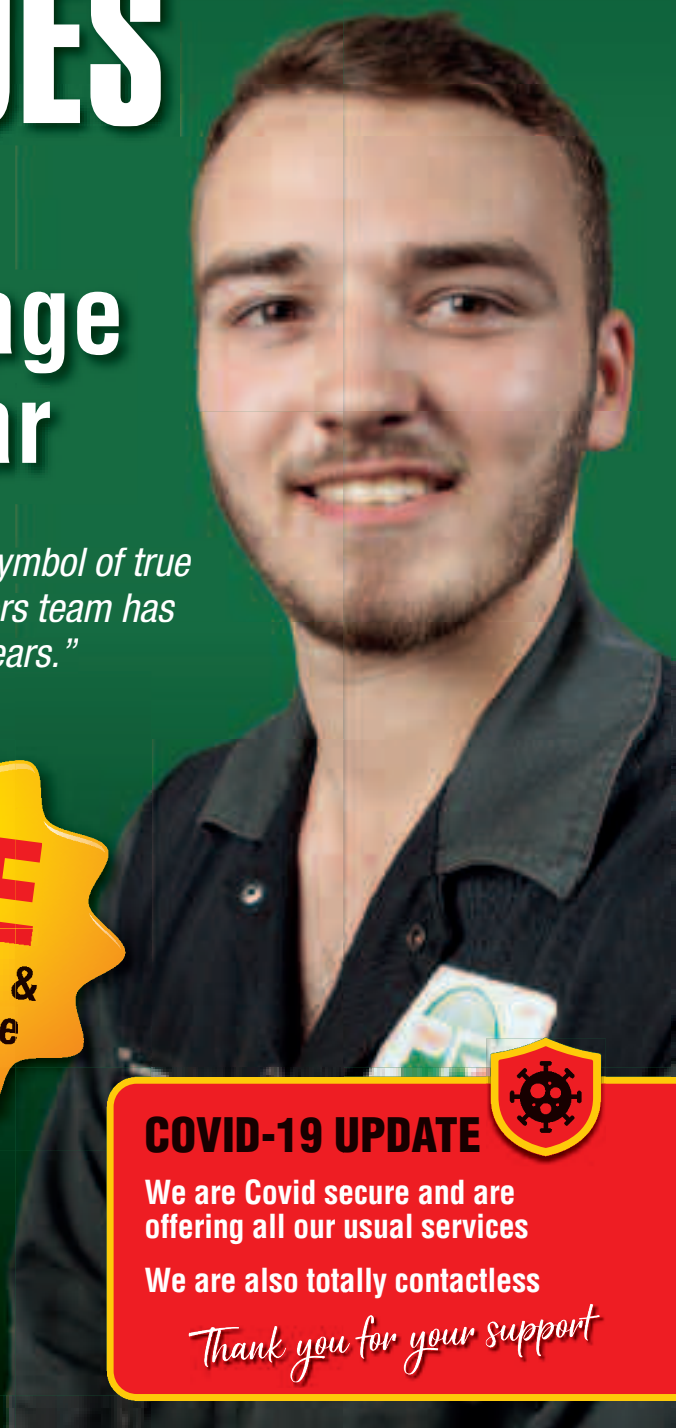
Tidmarsh RG8 8HG

## We provide all garage services for your car

*"Alec Issigonis invented the Mini in 1959. It became a symbol of true Britishness, trustworthiness and reliability. Our PR Motors team has been applying the same important values for over 30 years."*



JASON, Technician at PR Motors



### COVID-19 UPDATE

We are Covid secure and are offering all our usual services

We are also totally contactless

*Thank you for your support*

Email: [enquiries@prmotors.biz](mailto:enquiries@prmotors.biz) Web: [prmotors.biz](http://prmotors.biz)

Tel: **0118 984 4889**



Opening times: **Mon-Fri: 7:30am - 5:30pm**