



THE BETTER WAY TO APPLY GRANULAR MATERIAL

Thank you for purchasing the Vortex SPC™ or Vortex ICE Spreader. As always, we appreciate your support of the Vortex™ family of products.

U.S. Patent #6,883,736 #7,080,961 #7,137,579 #7,337,992

Contents of container:

- | | |
|----------------------------------|---------------------------------|
| 1. Mainframe and hopper assembly | 7. Fertilizer application hose |
| 2. Pre-wired Handle assembly | 8. Blower hose with quick clamp |
| 3. Leg Assembly | 9. Extension tubes (2) |
| 4. Handle to Leg Brace | 10. Axle, washer and pin set |
| 5. Wheel and tire assembly (2) | 11. Leg to Frame Brace |
| 6. Blower shelf assembly | |

Assembly Instructions:

NOTE: Remove mainframe and hopper assembly along with the pre-wired handle assembly together from the container as one unit.

Step 1: Attach the (4) handle to leg brace to the (3) leg assembly. (Note the tag, instructing attachment direction of brace) Do not tighten nut until step 2 is completed (picture 1)

Step 2: Attach the (2) pre-wired handle assembly and (3) leg assembly to the (1) mainframe and hopper assembly. (picture 2)

Step 3: Attach the (4) handle to leg brace to the (2) pre-wired handle assembly, attach the (11) Leg to frame brace (picture 3)

Step 4: Tighten all bolt, nylock nut and washer sets. Make sure assemblies are tight.

Step 5: Slide blower shelf assembly onto mounting tubes and tighten u-bolts (picture 4)

Step 6: Screw fertilizer hose onto manifold assembly (picture 5). (Note: Fertilizer hose only needs to be slightly threaded onto manifold. Threading all the way in will make removal difficult)

Step 7: Screw blower hose onto manifold assembly (picture 5). (Note: Blower hose only needs to be slightly threaded onto manifold. Threading all the way in will make removal difficult)

Step 8: Attach blower to (6) blower shelf assembly. Set blower on shelf, hook cables to blower and tighten cables using the attached nylock wing nuts below blower shelf on cables (picture 6)

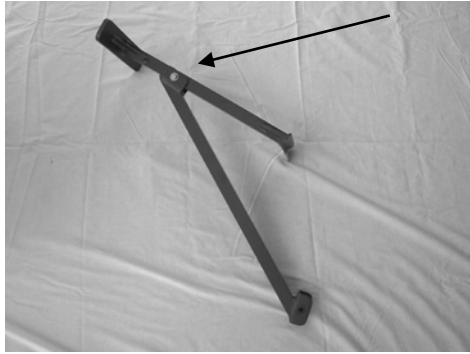
Step 9: Attach quick clamp to blower hose (picture 7)

Step 10: Inset the axle and bolt in the center of frame axle tube to secure. Insert inside pin and expand, slide washer on axle then wheel followed by another washer then outside pin and expand. (picture 8)

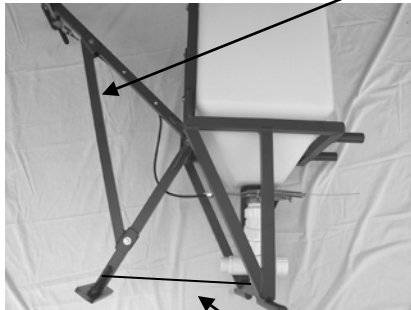
Step 11: Place extension tubes and fertilizer hose in holders (picture 9)

You are now ready to operate your new Vortex SPC™ or Vortex ICE™ Spreader!

(Picture 1) Make sure the handle to leg brace is attached to the leg assembly using the noted side (hang tag). Do not tighten nut.

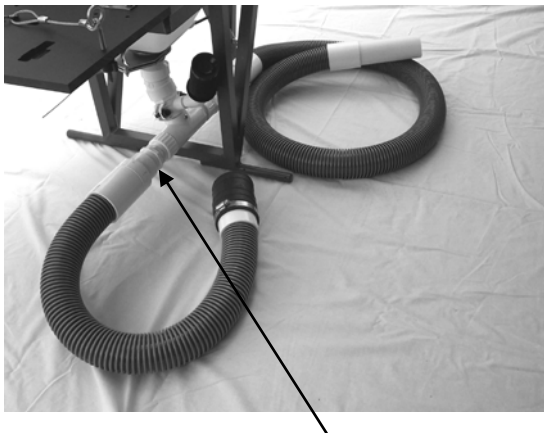


(Picture 3) And attach the handle to leg brace to the pre-wired handle assembly



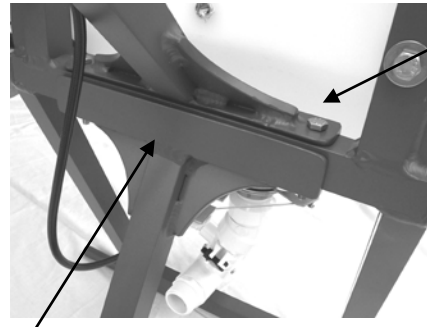
All units now have part #11 leg to frame brace

(Picture 5)
Screw fertilizer hose onto manifold assembly.
Screw blower hose onto manifold assembly.
Fertilizer and blower hose only need to be slightly threaded onto manifold. Threading all the way in will make removal difficult



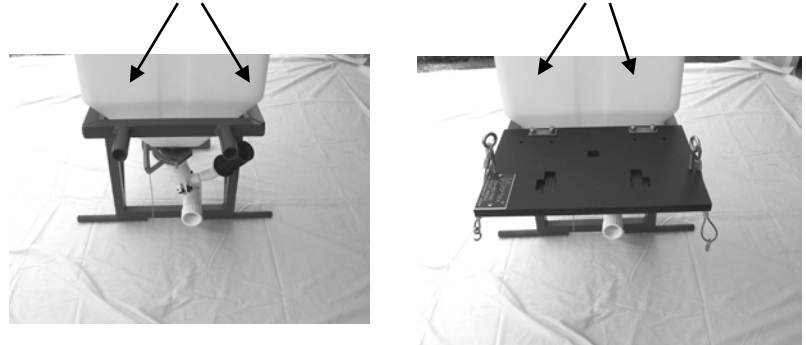
Units have a 60 degree turn attached to the manifold then the hose and a manifold protection bumper now included. Your unit will have these items not shown in photo. See assembled unit pictures on last page.

(Picture 2) Attach the pre-wired handle assembly and leg assembly to the mainframe and hopper assembly. Make sure bolts are tight! The order of washers should be: Bolt head, star washer, flat washer. On bottom: frame, flat washer, star washer, nylock nut.

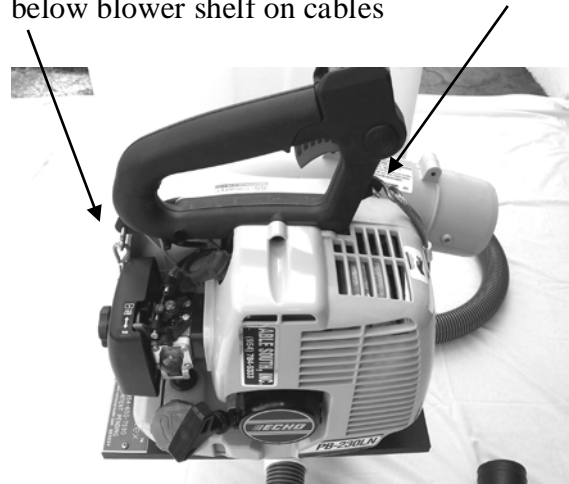


Now with center bolt set.

(Picture 4) Slide blower shelf assembly onto mounting tubes and tighten u-bolts



(Picture 6) Attach blower to blower shelf assembly. Set blower on shelf, hook cables to blower and tighten cables using the attached nylock wing nuts below blower shelf on cables



(Picture 7) Attach quick clamp to blower hose



(Picture 8) Insert axle and tighten nylock nut. Slide wheel and tire assemblies onto axle and pin Seq. of assembly- Pin, washer, wheel, washer, pin.



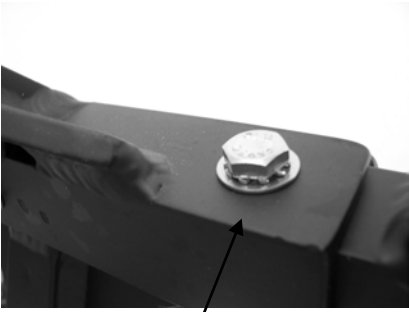
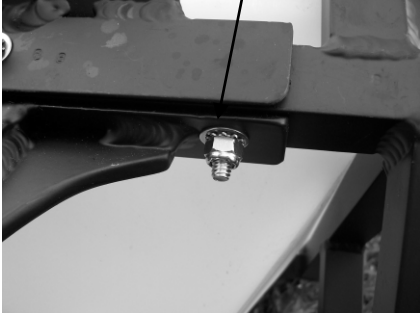
(Picture 9) Place extension tubes and fertilizer hose in holders



**Any questions while assembling
or operating the Vortex SPC™,
give us a call 954-650-7590 or
877-886-7839**

**www.vortexadvantage.com-
Vortex SPC™ and Vortex ICE™**

(Now a 1" fender washer)
Nut, lockwasher, flat washer



Bolt head, lock washer, flat washer
(Now a 1" fender washer)

