

ASSESSOR'S MAP

SHOWING ZONING DISTRICTS

AMENDMENTS					
LOT(S)	FROM	TO	ORDIN. #	DATE	NOTE
97.104	B1	B2	-	1969	-
90.96	R20	R7	683	8/14/87	WITH STIP.
107	R20	R7	785	3/12/90	WITH STIP.
124	R7	R20	916	4/11/94	-

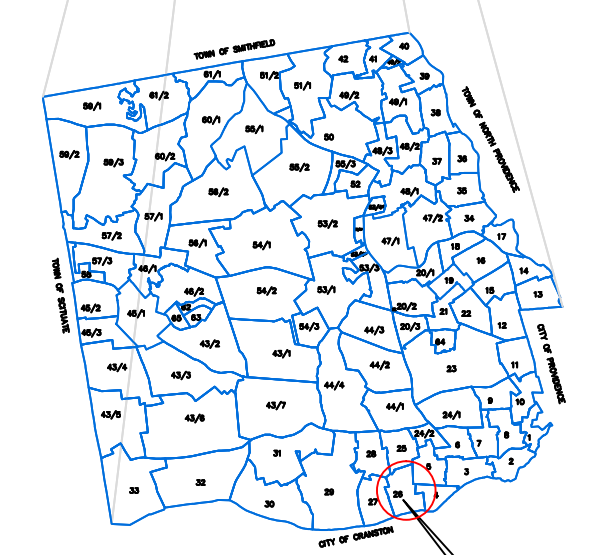
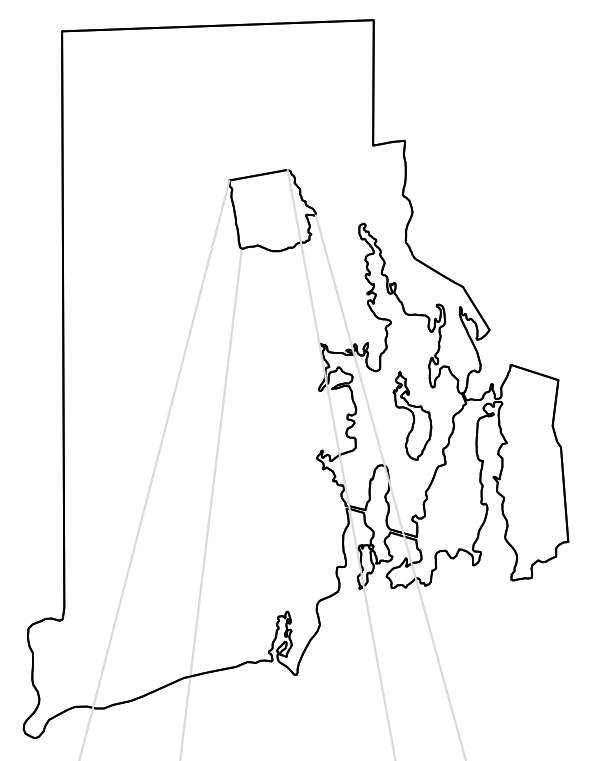
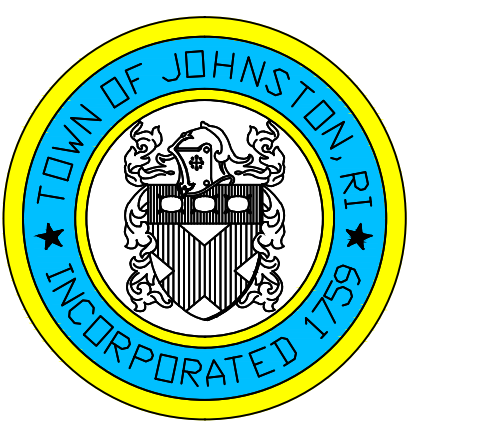
Assessor's Plat Number

26

STATE OF RHODE ISLAND
TOWN OF JOHNSTON

PROVIDENCE COUNTY
INCORPORATED 1759

ASSESSOR'S OFFICE
1385 HARTFORD AVENUE
JOHNSTON, RHODE ISLAND
02919



PLAT INDEX
AREA

Scale: 1:100

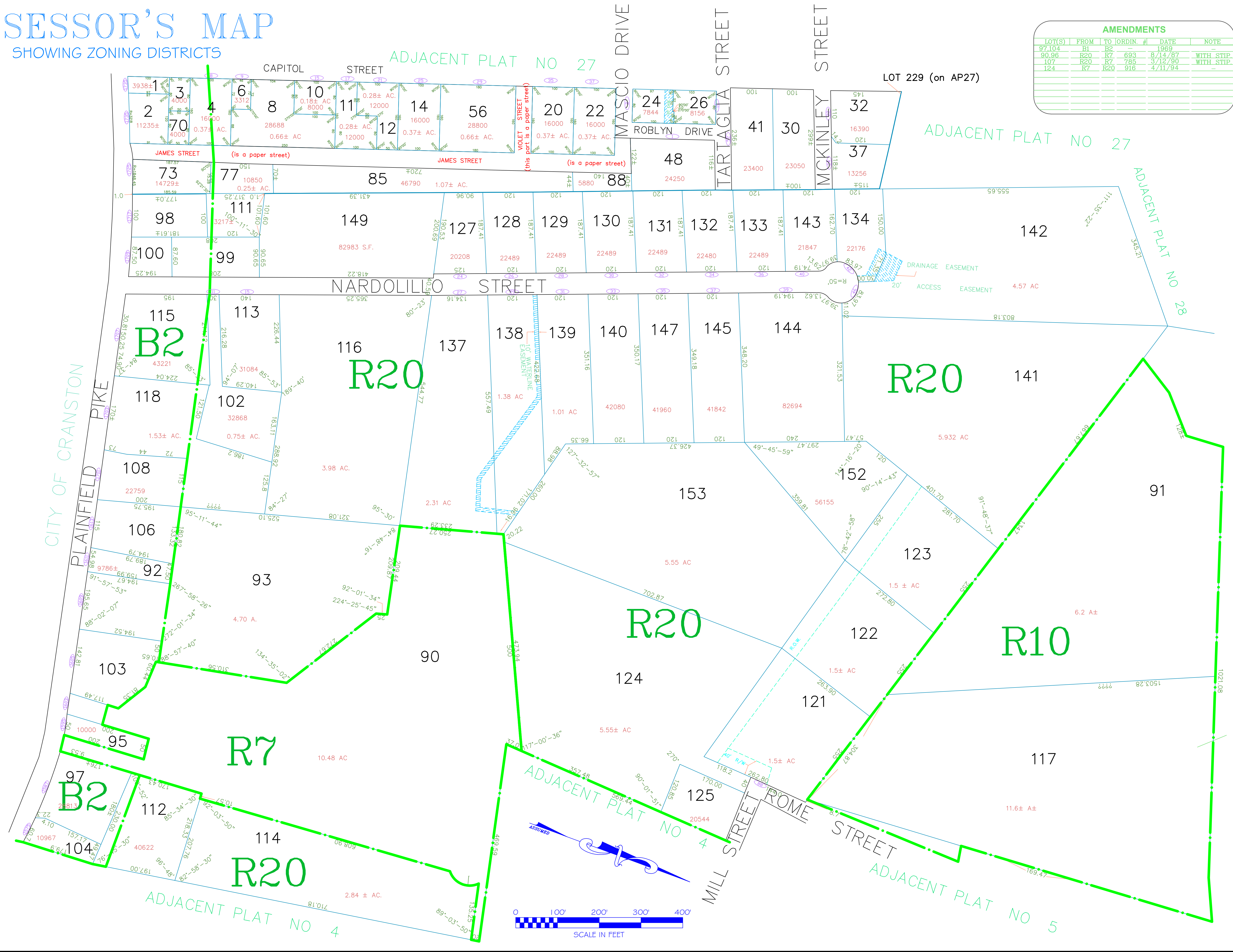
Revised By: Benjamin Ng

Last updated: January 04, 2016

Date printed: January 04, 2016

For copies of plat maps, please go to the DPW at 100 Irons Avenue Johnston Rhode Island. Thank you.

NOTE: This map was prepared for the use of the Town of Johnston for assessment and illustrative purposes only. It does not represent a survey of the premises. No liability is assumed as to the sufficiency or accuracy of the data delineated hereon.



ADJACENT PLAT NO 25