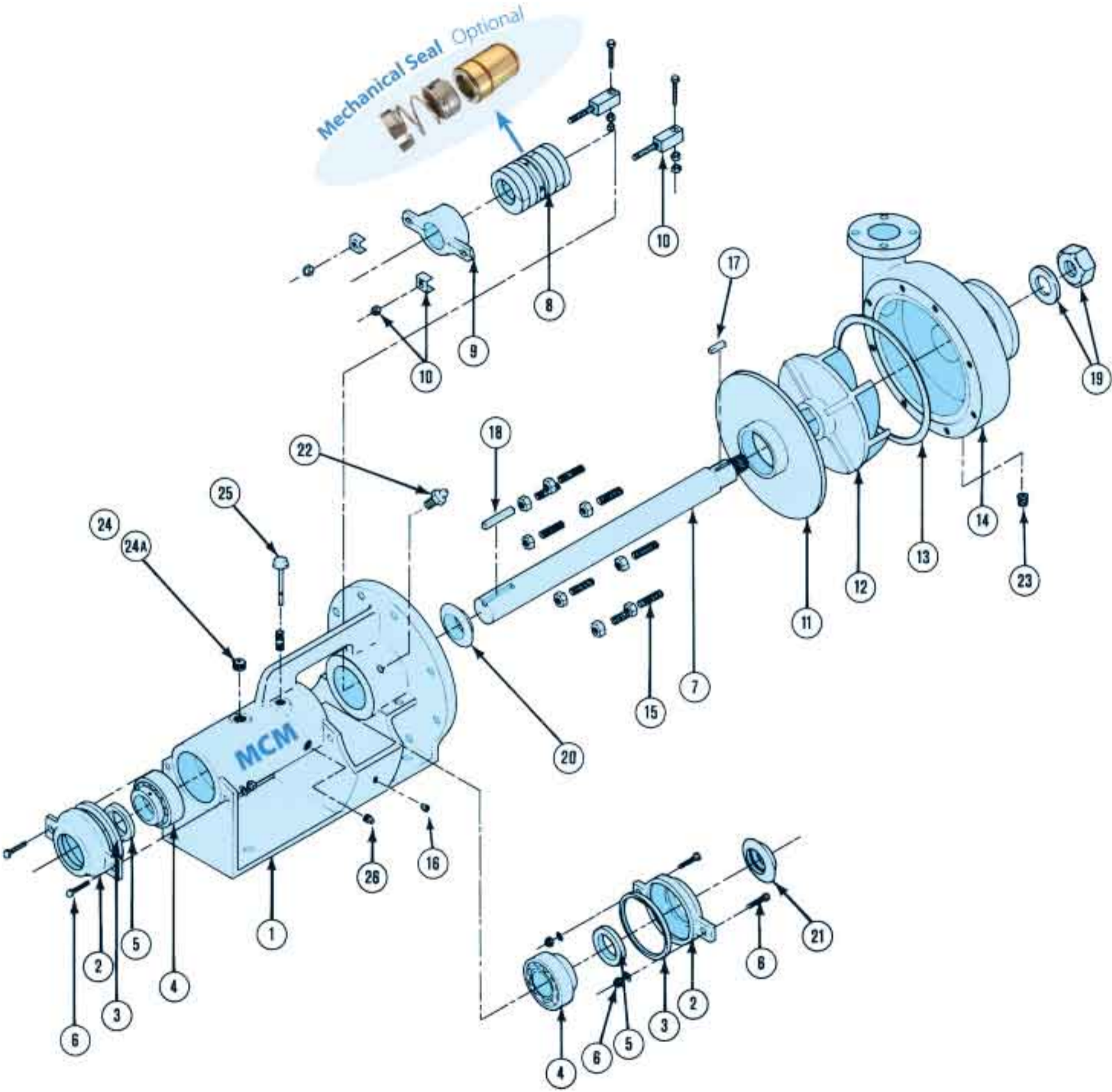


118 SERIES *Parts Diagram*



MCM Pumps... an Industry Leader!

118 PUMP SIZES

PUMP SIZE & ROTATION	MAX IMPELLER	MODEL NUMBER		
		CAST IRON	ALUMINUM BRONZE	ALUMINUM BRONZE FITTED
1x1½R	8½"	CP1811CRXXX	CP1811ARXXX	CP1811AFRXXX
1x1½L	8½"	CP1811CLXXX	CP1811ALXXX	CP1811AFLXXX
1½x2R	8½"	CP1812CRXXX	CP1812ARXXX	CP1812AFRXXX
1½x2L	8½"	CP1812CLXXX	CP1812ALXXX	CP1812AFLXXX
2x3R	8½"	CP1823CRXXX	CP1823ARXXX	CP1823AFRXXX
2x3L	8½"	CP1823CLXXX	CP1823ALXXX	CP1823AFLXXX
3x4R	8½"	CP1834CRXXX	CP1834ARXXX	CP1834AFRXXX

NOTE: 118 Series Pumps available in stainless steel on request.
Add /MS for pumps with Mechanical Seals.

118 PUMP PARTS LIST

Item No.	Part No.	Description	Qty. Req'd.	Approx. Wt.
1	P18PED	118 Pedestal	1	87.00
2	P18BC	118 Bearing Cap	2	2.50
3	P18BCG	118 Bearing Cap Gasket	2	.05
4	P18BA	118 Bearing Assembly	2	1.50
5	P18OGS	118 Oil & Grease Seal	2	.15
6	P18BCBA	118 Bearing Cap Bolt Assembly	4	.15
7	*	118 Shaft Assembly	1	6.00
8	*	118 Packing Assembly / Mechanical Seal	1	.50
9	P18PG	118 Packing Gland	1	1.50
10	P18GABA	118 Gland Adjustment Bolt Assembly	2	.50
11	*	118 Wear Plate	1	6.50
12	*	118 Impeller	1	*
13	P18HG	118 Housing Gasket	1	.10
14	*	118 Housing Assembly	1	*
15	P18HSN	118 Housing Stud W/ Nut	8	.25
16	P18DBDP	118 Drip Bowl Drain Plug	1	.25
17	P18IK3S	118 Impeller Key	1	.10
18	P18CK4S	118 Coupling Key	1	.25
19	P18LNA	118 Shaft Lock Nut Assembly	1	.25
20	P18SRO	118 Slinger Ring - Oil	1	.25
21	P18SRW	118 Slinger Ring - Water	1	.25
22	P18ZGF	118 Zert Grease Fitting	1	.10
23	P18HDP	118 Housing Drain Plug	1	.10
24	P18FBC	118 Filler Breather Cap	1	.25
24A	P18OVV	118 Oil Vent Valve	1	.05
25	P18DS	118 Dip Stick	1	.50
26	P18ODP	118 Oil Drain Plug	1	.05

*See Options

118 SERIES

Cast Iron or Aluminum Bronze PARTS OPTIONS

Item No.	Part No.	Description	Approx. Wt.
*7	P18SH316SS	118 Plain 316-SS Shaft Assembly	6.00
	P18SH416SS	118 Plain 416-SS Shaft Assembly	6.00
	P18SH416SC	118 416-SS Ceramic Coated Shaft Assembly	6.00
*8	P18PMSG	118 Graphite Packing Assembly	.50
	P18PMSK	118 King Packing Assembly	.50
	P18PMST	118 Teflon Packing Assembly	.50
	P18MSXX	118 Mechanical Seal	2.00
*11	P18WPC	118 Cast Iron Wear Plate	6.50
	P18WPA	118 Aluminum Bronze Wear Plate	6.50
*12	P18C11MRXXX	118 1x1½ Cast Iron Right Hand Impeller	7.50
	P18C11MLXXX	118 1 x 1½ Cast Iron Left Hand Impeller	7.50
	P18C12MRXXX	118 1½ x 2 Cast Iron Right Hand Impeller	8.00
	P18C12MLXXX	118 1½ x 2 Cast Iron Left Hand Impeller	8.00
	P18A12MRXXX	118 1½ x 2 Aluminum Bronze Right Hand Impeller	8.00
	P18A12MLXXX	118 1½ x 2 Aluminum Bronze Left Hand Impeller	8.00
	P18C23MRXXX	118 2 x 3 Cast Iron Right Hand Impeller	8.50
	P18C23MLXXX	118 2 x 3 Cast Iron Left Hand Impeller	8.50
	P18A23MRXXX	118 2 x 3 Aluminum Bronze Right Hand Impeller	8.50
	P18A23MLXXX	118 2 x 3 Aluminum Bronze Left Hand Impeller	8.50
	P18C34MRXXX	118 3 x 4 Cast Iron Right Hand Impeller	10.00
	P18A34MRXXX	118 3 x 4 Aluminum Bronze Right Hand Impeller	10.00
*14	P18C11HR	118 1 x 1½ Cast Iron Right Hand Housing Assembly	42.00
	P18C11HL	118 1 x 1½ Cast Iron Left Hand Housing Assembly	42.00
	P18C12HR	118 1½ x 2 Cast Iron Right Hand Housing Assembly	44.00
	P18C12HL	118 1½ x 2 Cast Iron Left Hand Housing Assembly	44.00
	P18A12HR	118 1½ x 2 Aluminum Bronze Right Hand Housing Assembly	44.00
	P18A12HL	118 1½ x 2 Aluminum Bronze Left Hand Housing Assembly	44.00
	P18C23HR	118 2 x 3 Cast Iron Right Hand Housing Assembly	54.00
	P18C23HL	118 2 x 3 Cast Iron Left Hand Housing Assembly	54.00
	P18A23HR	118 2 x 3 Aluminum Bronze Right Hand Housing Assembly	56.00
	P18A23HL	118 2 x 3 Aluminum Bronze Left Hand Housing Assembly	56.00
	P18C34HR	118 3 x 4 Cast Iron Right Hand Housing Assembly	72.00
	P18A34HR	118 3 x 4 Aluminum Bronze Right Hand Housing Assembly	72.00

*See Impeller Size Code On Page 8

Look and Compare...

We are your best Choice !!!