

## Matre Forestry Consulting, Inc.

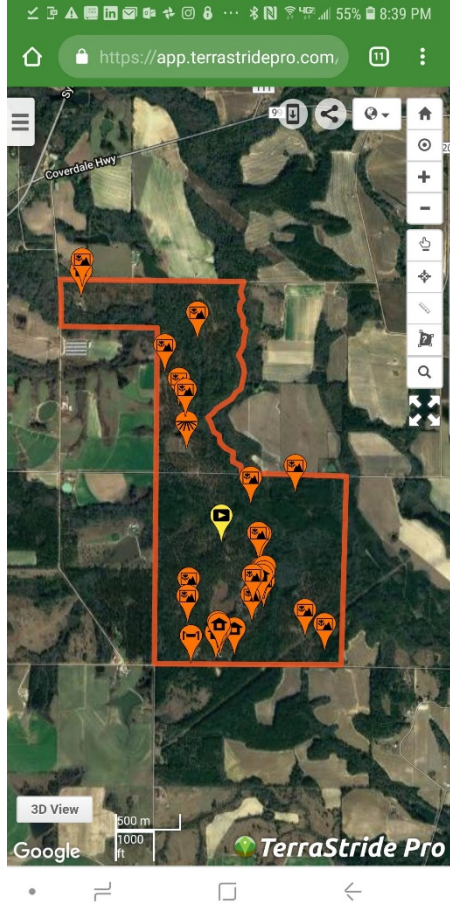
2549 Lafayette Plaza Dr  
Suite 204  
Albany GA 31707  
Office (229) 639 4973 Fax (229) 255 2910  
[www.matreforestry.com](http://www.matreforestry.com)



1/13/2019

### Re: Interactive Map Tips

Thank you very much for checking out our land listing, and our interactive map. For the tech savvy, the map is super easy. And for the rest of us, it is still easy! Following is summary of primary map tools:



- Top Left is a **Menu Button**: Click it to select **Details** (click for property details), **Media** (pictures), **List** (of property features), **Filters** (turn on and off layers), **Layers** (different map overlays such as soil and water and flood), **Files** (very important, where you can download property package and other files), **Stats** (of mapped key features).
- Top, **World Button**: Click for drop down list of various base maps such as aerial, street maps, top
- Top Right, **Circle with Dot in Middle Button**: Click to get your GPS or Cell Service location. It will not track you, so click every once in a while to refresh. For better GPS tracking in the field, download the Huntstand app ( <https://huntstand.com/> ) and log on as [mikematre@gmail.com](mailto:mikematre@gmail.com); password matreforestryguest . Or click files and download individual maps and open them in Avenza app for GPS navigation. ( <https://www.avenza.com/avenza-maps/> )
- Right, **Plus and Minus and Hand Buttons**: Zoom in and out, and pan. On touchscreen device simply pinch in or out or use fingertip to pan.
- Right, **Bullseye Button**: Click and then click anywhere on map to get coordinates and elevation.
- Right, **Ruler Button**: Click, and then click two or more points on map to measure distance.
- Right, **Polygon Button**: Click, and then click three or more points on map to measure acreage.
- Right, **4 Arrows Button**: Fullscreen Button. Click to leave our website to go Fullscreen for optimum map use.
- Click on map features such as tract or stand boundaries for more information. Click place markers for photos at that location.
- If you see a yellow "video" placemarker, click for property video.
- To print map, take a screenshot and print the screenshot, or use Print Screen command if your device has it. Or, click files and print the property package or individual maps (if available).

We hope our interactive map helps you get to know the property, and better yet, we hope you will then contact us to schedule a property tour. Contact us anytime if we can help you sell land, acquire land, or manage land.

Sincerely,

Mike Matre, ALC, ACF, RF  
*President*, Matre Forestry Consulting, Inc.  
Georgia & Alabama Registered Forester (GA# 2486, AL# GA2486)  
Georgia & Alabama Licensed Real Estate Broker  
Mobile (229) 869-1111

[mike@matreforestry.com](mailto:mike@matreforestry.com)



*Established in 1999, Matre Forestry Consulting, Inc. of Albany, Georgia is a full service forestry consulting company and real estate brokerage. On behalf of our clients, our services include timber sales & management, land sales and acquisitions, timber inventories/cruising, appraisals, marking, prescribed burning, reforestation, GPS & GIS mapping, investment & market analysis, contract forestry services, wildlife habitat improvement, and hunting plantation development.*

