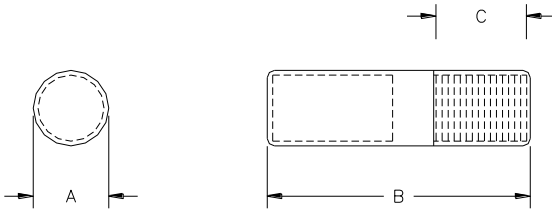


# MAMMAL BODY IMPLANT

## Series M1200



### Technical Specifications

Transmitter type:	Crystal controlled 2-stage
Calibration tolerance:	±2.5kHz
Frequency stability:	±2.5kHz, -20°C to 40°C
Pulse rate and width:	Typical on time 20ms, off time 1100ms (controlled by uC)
Pulse rate variation:	0.01%/volt, ±0.01% for temperatures -20°C to +40°C
Battery:	Lithium
Activation:	By removing magnet
Encapsulation:	Electrical resin, water-proof, specific gravity: 1.12 Coated with USP Class VI material

MODEL	BATTERY	BATTERY CAPACITY (days)			DIMENSIONS (mm)			WEIGHT (grams)	PRICE GROUP
		35 ppm*	40 ppm	55 ppm	A	B	C		
	3.5V								
M1215	10-25	362	264	202	12	71	25	13	F
M1230	1/2AA	897	654	502	18	70	25	22	C
M1235	2/3AA	1191	869	666	18	79	25	24	C
M1240	2/3A	1510	1102	845	20	79	25	30	C
M1245B	AA	792	540	400	20	102	25	42	C
M1250B	C	2347	1598	1185	29	112	30	100	D
M1255B	D	5575	3796	2816	36	125	40	145	D

\*15 ms pulse width

All models available with high accuracy temperature option, order as M12xxT.

Factors other than battery capacity may reduce life.

Warranty life is 50% of battery capacity, maximum of two years.

470 First Ave. No., Box 398 • Isanti, MN 55040  
763.444.9267 • fax:763.444.9384 • sales@atstrack.com • www.atstrack.com