

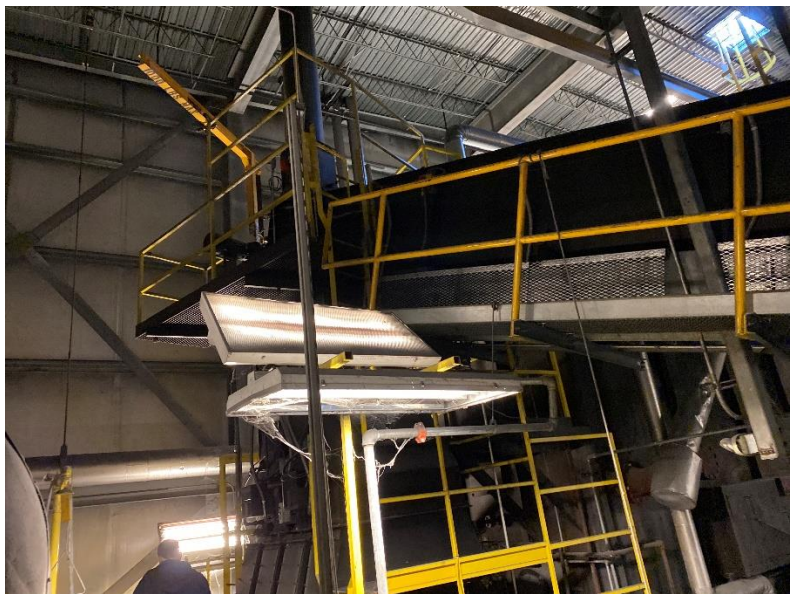


**1500 HP, 50,000 PPH HURST SOLID FUEL STEAM BOILER WITH TURBINE**

Manufacturer: Hurst  
Model: Hybrid, 2 pass waste fuel  
Capacity: 51,750 lbs./hr , 1500 hp  
Max. working pressure: 450 psig  
Operating pressure: 400 psig  
Steam Temperature" 600 ° F  
Heating Surface Sq. Ft 9750  
Fuel: waste or wood chips  
Fuel consumption: 18,248 lbs./hr. wood chips based on 5652 btu/lb, ≤30% moisture content  
Scope of supply:  
Hurst steam boiler  
Fuel bin, conveyor, metering bin , solid fuel burner  
Gas start up fuel burner and trim  
Reciprocating Grate stoker  
Wet ash conveyor and fly ash collector and stack  
Air fan twin city 30 hp, 460 v with VFD  
Flue gas recirculation fan Twin city 20 hp, 460 v with VFD  
Metering screw motor 7.5 hp, 460 v with VFD  
Reinjection fan 1.5 hp, 460 v with VFD  
E-Tech Economizer  
E-tech Superheater  
ID fan 250 hp, 460 v  
Soot blower  
Deaerator 100,000 PPH, 50 psig  
Boiler feed water pumps  
Boiler building  
Skinner 750 kw, 400 psig/600°F inlet steam, 125 psig exhaust 480 v/3/60 hz, 3 wire generator  
Boiler control panel, steam turbine control and synchronizing panel, circuit breaker panel and transformer, MCC, battery and charger

Built 2009 shutdown 2017, Very good condition.



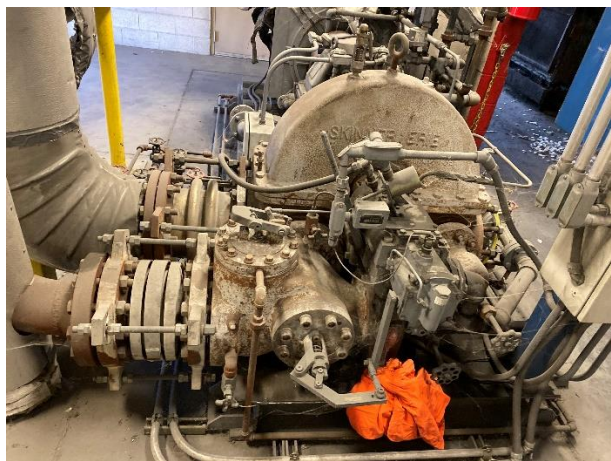
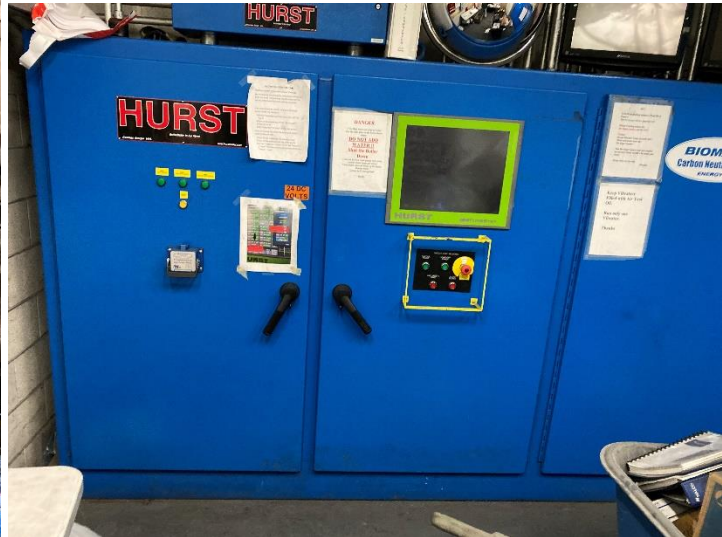
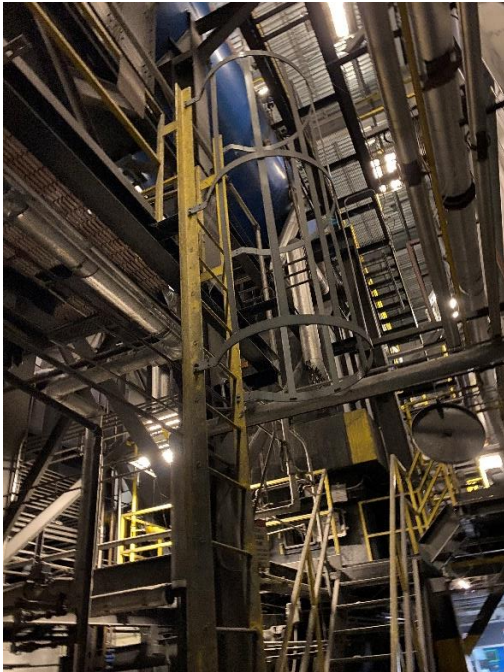






NSV Energy, LLC

[www.nsvenergy.com](http://www.nsvenergy.com)



[sales@nsvenergy.com](mailto:sales@nsvenergy.com)

908-421-4139