

The January 2019 Newsletter Gardens Gate



Port St. Lucie
Botanical Gardens



Friday • January 18, 2019
Ceremony begins at 11am
in the Secret Garden

A NEW YEAR IS ON THE HORIZON

2018 was a year of new additions and improvements to your Port St. Lucie Botanical Gardens. The Gardens saw the Secret Garden undergo a transformation into a destination fit for all types of ceremonies with the installation of the Kelly Pavilion, new landscaping and the beautiful Secret Garden welcome gate. If you have not yet had the opportunity to tour The Gardens and see this new destination spot, you are in for a real treat.

We continue to add the new irrigation system throughout the grounds and the new Moon Gates in the Rose garden courtesy of the Rio Lindo Garden Club are really taking shape. The Pavilion saw the addition of a new large TV and we just got our new room dividers to make meetings and club events for comfortable.

Our Propagation Garden Center has many improvements throughout the year with the GL Homes Green House fully operational, a new tiki style Garden Center Sales Hut

[Continued on Pg 3](#)

Contents

President's Message
Board & Committees
Video Of The Month
Arbor Day Memorial Request

[Pg2](#)
[Pg2](#)
[Pg2](#)
[Pg5](#)

A Day In Propagation
Out & About with The Gardens
January Calendar
January Planting Calendar
What's Flowering & Edibles to Plant
Secret Garden Plaque Dedication
Partners in Horticulture Education
Upcoming Events & Save the Dates

[Pg6](#)
[Pg7](#)
[Pg34](#)
[Pg36](#)
[Pg37](#)
[Pg38](#)
[Pg39](#)
[Pg40](#)

Reminder

**ANNUAL MEETING AND
BOARD ELECTIONS
MONDAY • JANUARY 28TH
5:30 - 8:30 PM**



2410 SE Westmoreland Blvd.
 Port St. Lucie, FL 34952
 Phone: 772.337.1959
 Fax: 772.237.5952
 E-mail: info@pslbotanicalgardens.org
 Web: www.pslbg.org
 Hours: Wednesday - Saturday 10am - 4pm
 Sunday Noon - 4pm
 Closed Monday, Tuesday & Holidays

Suggested Donations:

Adults \$5
 Students \$2
 Children 12 & Under Welcome
 Free for FPSLBG Members and
 Active Military with family (IDs required)

Mission Statement . . .

Friends' mission is to create and maintain a beautiful, serene sanctuary in the center of Port St. Lucie that is environmentally sound and naturally diverse and to provide educational, cultural and recreational opportunities for all who visit.

Officers & Directors . . .

President: Joleen King
 Vice President: Brenda Gustafson
 Secretary: Judy Nash-Wade
 Treasurer: Claire Clark
 Directors: Mike Alexander
 Jeff Chambers
 Melinda DeMarco
 Heather Furnari
 Glenn Ryals
 Tim Sutton
 Joe Wojcik

Standing Committee Chairs . . .

Election Committee: Stephanie Alessandrini-Giarraffa
 Finance Committee: Claire Clark
 Gift Shop Committee: Mike Alexander
 Horticulture Committee: Brenda Gustafson
 Membership & Volunteer Committee: Jeff Chambers
 Resource Development Committee: Melinda DeMarco
 Strategic Planning Committee: Glenn Ryals

Newsletter...

Editor: Judy Nash-Wade
 Design: Mark Barnes

The Gardens is managed and operated by Friends of the Port St. Lucie Botanical Gardens, Inc., a non-profit 501(c)(3) public charity organization, that was founded to help support the daily operations of The Gardens. Friends volunteers provide hands-on daily oversight of the facility, including staffing to handle the many visitors year round. Please consider becoming a member of Friends. Friends' is a 100% volunteer organization. In all cases, donations are deductible to the extent allowed by law.



PRESIDENT'S MESSAGE...

As our New Year 2019 opens, the Gardens' Annual Meeting and election of Board members occurs late January. Our board members are elected to serve three year terms, and this year we have one valuable

member of our community who will be stepping off the Board after giving valuable service to the Gardens: Joe Wojcik, Director at Large. Thank you, Joe.

Arbor Day is celebrated January 18, 2019. Florida Arbor Day at the PSL Botanical Gardens is an opportunity for members and the public to celebrate and memorialize family and friends; those we've lost and wish to commemorate, or those still with us who we wish to celebrate and honor. This newsletter contains more information about being part of our Arbor Day celebration, which is marked with a short ceremony at 11 am on Friday, January 18. Consider joining us!

Again, we welcome January and the start of what promises to be an interesting and exciting new year at the Gardens. Visit soon!

Joleen King
President

VIDEO OF THE MONTH

SNOWBALL FIGHT AT THE GARDENS

Color Your World...

**You Deserve The
Best Flowers in town!**

Geraniums

\$3.99

5" Pots

**Pinder's
Nursery**
Palm City, Florida



**FREE
CLASSES**

Complete List Of
All Classes At
www.pindersnursery.com
Must Register Online

Mon-Sat 9am - 5pm Sun 10am - 4pm
Since 1975, Locally Owned & Operated
5500 SW Martin Hwy. Palm City

...growing flowers, food and friendships!

772-781-8085

added, additional potting tables, a donation of over 200 beautiful bromeliads, and many other new upgrades and features that you will just need to stop by and check out. PS - purchase one of their beautiful propagated plants while you are visiting.

The gardens saw the commencement of our Veteran Victory Corps, a program for Veterans to get involved with gardening and fellowship at The Gardens. The flag presentation area in front of the Gardens is a sight to behold. We thank you for your service. We also saw the continuation of our hugely successful How-To Seminars that bring added value to your membership and provide great decorating, planting and propagation ideas. Look to see more of these programs in 2019.

A BIG THANK YOU goes out to our Volunteers including Wacky Weeders and Core. You are the backbone of The Gardens and we are truly grateful for everything you do to help make and keep your Port St. Lucie Botanical Gardens a destination spot in Port St. Lucie and on the Treasure Coast.

As we move on to 2019, we have a number of projects that will continue to enhance The Gardens and we're hoping to implement a program of acoustic improvements to the Pavilion. We will also be unveiling a special fund raising effort for an exploration area in the Gardens (our Faerie Forrest...*shhh*) and our 2020 10th Anniversary Gala Reception at our Annual Membership Meeting on Monday, January 28, 2019 starting at 5:30pm.

You will not want to miss out on this meeting as we will cover where we have been in 2018 and where we are headed for 2019 and beyond. Additionally, this is your chance to have your membership voice heard in our Annual Election for Board of Directors and possibly find a committee or two to share your talents with and further our mission at the Port St. Lucie Botanical Gardens.

Finally, as we close out 2018 and remember family and loved ones, it's the perfect time to honor those memories with a memorial dedication for our Arbor Day celebration on Friday, January 18, 2019 starting at 11am in our Secret Garden. Each memorial is a \$25 minimum donation and can be sent by check using the memorial dedication form on the next page or by credit card on-line at www.pslbg.org/arbor-day.html.

We look forward to seeing you at our annual meeting on January 28th and we wish you a very Happy and Successful 2019.

**Thank You,
Friends of the
Port St. Lucie Botanical Gardens**





Friends of the Port St. Lucie
**Botanical
Gardens**
2019 Memorial Request

Memorial Requested by:

Name (please print)

Relationship to person being remembered

Telephone #

Email

\$

Donation Amount

Check #

Date

PLEASE PRINT CAREFULLY

Person being remembered

By ? .. Your name, family group, etc.

**Donations welcome. Minimum of \$25.00
donation per Memorial. Please use
separate form for each memorial.**

**Please review the information given very carefully.
Friends of the PSLBG make every effort to
ensure accuracy. Please help us by making
sure all fields are filled out completely and
legibly for your request to be processed.**

Contact 772.337.1959 for information

Arbor Day 01.18.19

A DAY IN PROPAGATION

VOLUNTEERS BUILDING TABLES, COME JOIN US AT THE GARDENS!

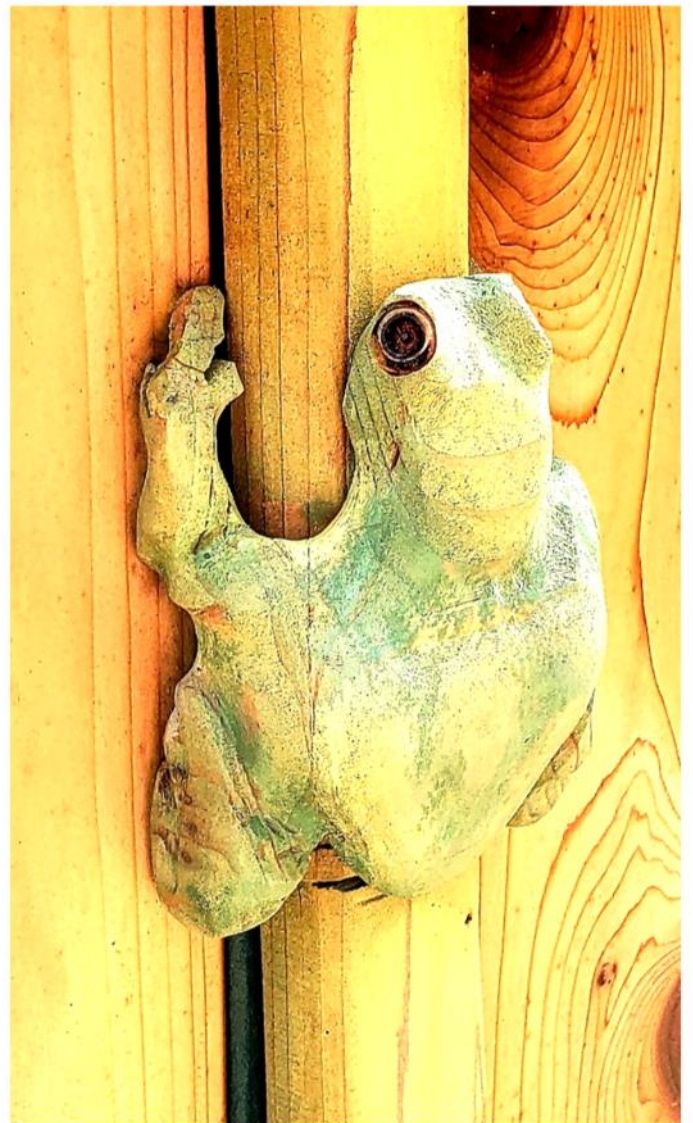


Out & About



With The Gardens

Seen Around The Gardens



Continued on Pg 7



ENLIST: JOIN THE Saturday Wacky Weeder's'

When: January 19, 2019

Where: PSL Botanical Gardens

Time: 8:00AM - 12:00PM

The Gardens appreciates your help to continue keeping the beautiful Port St. Lucie Botanical Gardens in perfect shape for the new year and beyond.

WE CAN REALLY USE YOUR HELP TO GET READY FOR BOTANICA 2019!

JOIN US FOR A FUN MORNING – ALL VOLUNTEERS INVITED

Consider yourself less than able-bodied? There are jobs for everyone, no matter age or ability. Bring gloves, clippers and any personal tools you prefer.



at the Port St. Lucie Botanical Gardens

GARDEN CENTER

JANUARY PLANT SALE

All plants - \$4.00, \$6.00 & \$8.00

(unless otherwise marked)

\$1.00 \$2.00 & \$3.00 Table

Plant Specialist Available

10:00 am - 1:00 pm

Thursday - Saturday

**BOGO: Cupea, Spinach Tree,
Porterweed, Amaryllis**

BRING PLANTS TO GIFT SHOP TO PAY



JANUARY SPECIAL

**Purchase \$25.00 receive \$5.00 OFF
Poinciana Trees - \$15.00**



**PORT ST. LUCIE BOTANICAL GARDENS
2410 SE WESTMORELAND BLVD.
PORT ST. LUCIE, FL 34952
WWW.PSLBG.ORG
INFO@PSLBOTANICALGARDENS.ORG**



Continued from Pg 9

Treasure Coast Vintage Car Club Auto Show



Continued on Pg 11



St. Lucie West Garden Club

ATTENTION:

Nature Lovers, Butterfly Gardeners,
Bird Watchers, Conservationists, and
Those Who Enjoy Flowers and Plants.



The St. Lucie West Garden Club (established 1991)
meets at PGA Legacy Golf & Tennis Club
the 3rd Monday of each month.

For more information please call
Co-President's, **Pam Allen (561) 891-2959**,
or **Cheri Mabry (586) 322-7223**, or our
Membership Chairman, **Darlene Berube (508) 415-7345**.

See our Facebook page **St. Lucie West Garden Club**.

EXPERIENCE COUNTS - AND SAVINGS ADD UP



Find out about the **Competitive Rates** and **Special Benefits** available
through the AARP® Auto Insurance Program from The Hartford.

Ready to learn more? Contact our agency now:

POST INSURANCE



SEE HOW MUCH YOU COULD SAVE!
Call today for your **FREE**, no-obligation quote:

772-878-8184

POST INSURANCE

146 NW Central Park Plaza, Suite 102
Port St. Lucie, FL, 34986

info@insurewithpost.com
www.InsureWithPost.com





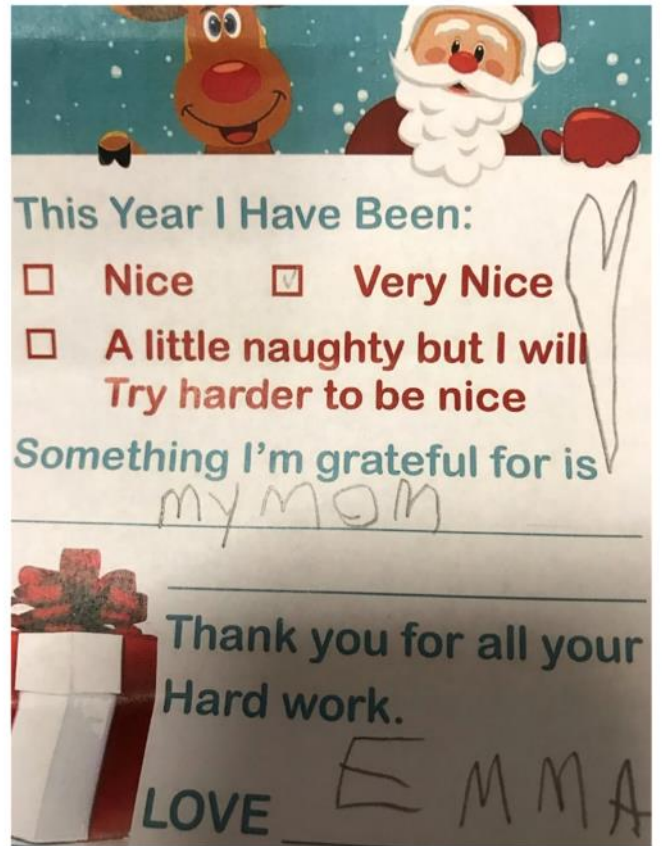
How-To Seminar: Wreath Making



Fun with Santa at The Gardens







Welcome to All Garden Goers...

This month our
Jazz Jams will be held on
January 9th
& **January 23rd**
starting at 6:30 pm

JAZZ JAMS

At The Gardens

Donation \$6 per person.
Gardens & Jazz Society
Members \$5 per person.

Sponsored by the
Fort Pierce Jazz & Blues Society

VISIT OUR WEBSITE



 "like" us on
facebook



SCOTT A. BARNABY, PGA
REALTOR® Sales Associate
PGA Professional

917-797-3304 (Direct)
772-340-4000 (Office) • 772-340-1557 (Fax)
ScottBarnabyGolf@PGA.com
"Connecting People to Property"

**COLDWELL
BANKER**

**THOMAS J. WHITE
REALTY**

1555 NW ST. LUCIE WEST BLVD.
SUITE 103
PORT ST. LUCIE, FL 34986

www.ThomasJWhiteRealty.com



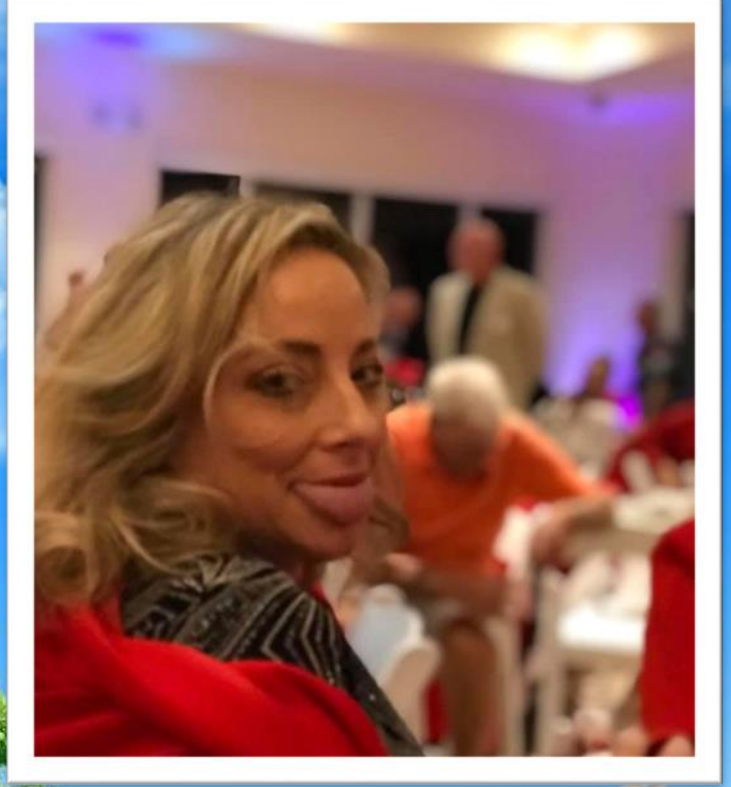
Each Office is Independently Owned and Operated





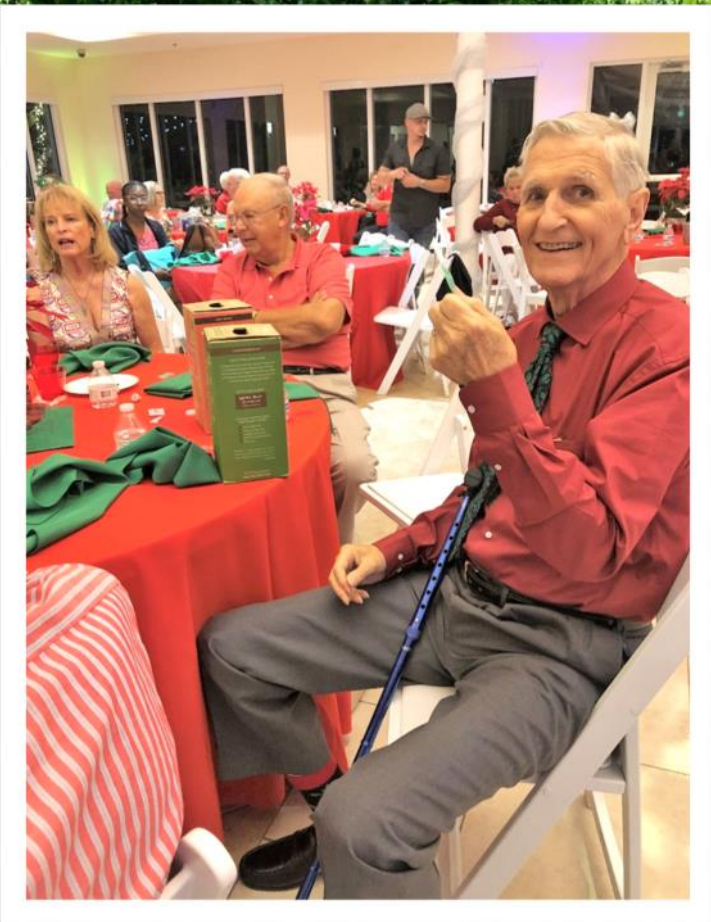
Continued from 20

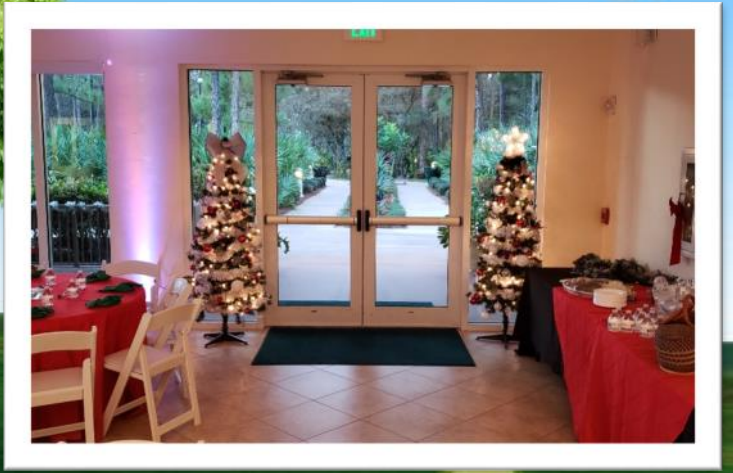
Members and Volunteers Jingle & Mingle **THANK YOU ST. LUCIE WEST GARDEN CLUB!!!**



Continued on Pg 22













GUETTLER BROTHERS CONSTRUCTION

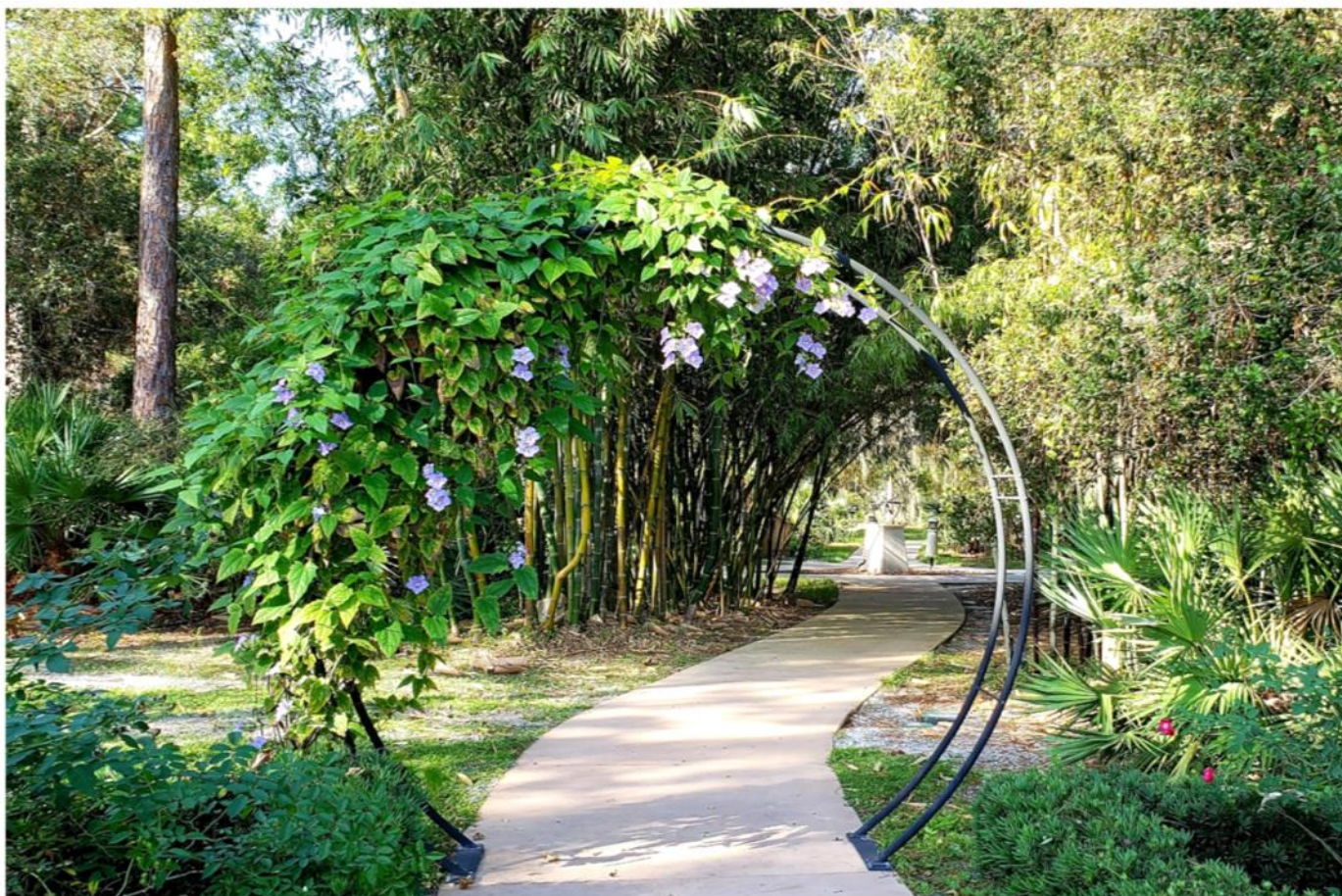


WWW.GUETTLERCONSTRUCTION.COM

New Room Dividers - **THANK YOU GL HOMES**



Visitor Pics







Connect. Integrate. Simplify.

Technology for every workplace delivering advanced functionality, ease of use and peace of mind.

TOSHIBA
BUSINESS SOLUTIONS



Pleased to be in
your office

Proud to be in
your community

**THINK OF US AS YOUR OFFICE
SOLUTIONS PARTNER!**

**Toshiba Business Solutions
Proud to Sponsor
"Steppin' Out for SafeSpace"**

It's not just a slogan; they're words we live by. Our local Toshiba team lives in this community just like you. Let us help you save as much as 40% on your document management needs.

To learn more please contact:

Daniel Pimpo
772-418-0033

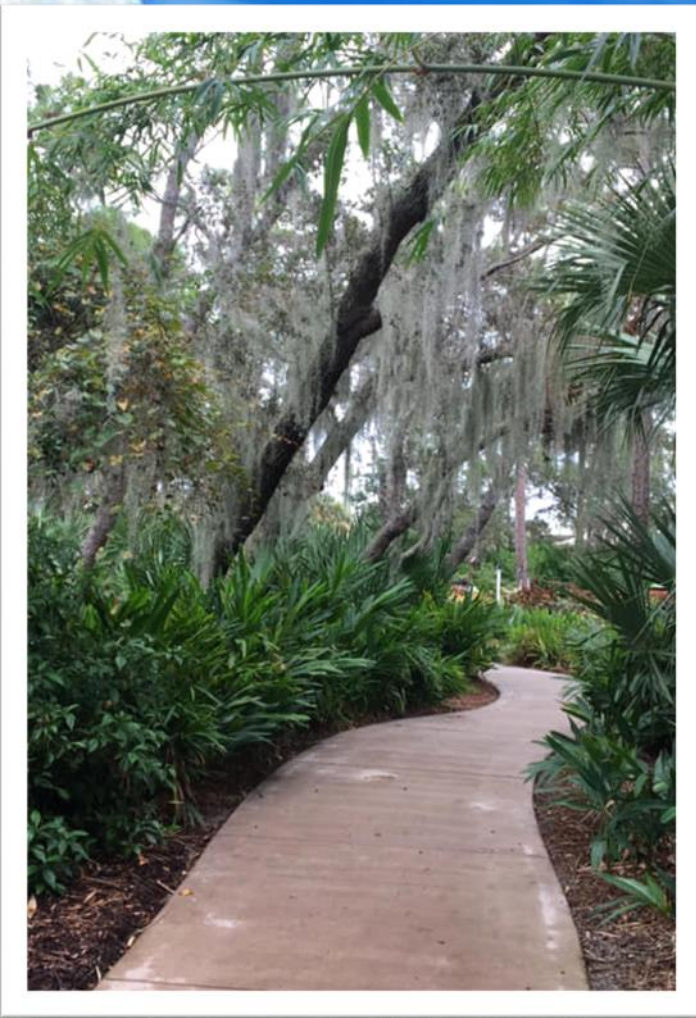
Daniel.Pimpo@tbs.toshiba.com



Lets
grow
together









JANUARY

1 st	New Years Day	CLOSED	Happy New Year
6 th	Crosstown Chapel Sunday Service	9:30 - 11:00 am	All Welcome
7 th	Newsletter Committee Meeting	4:00 - 5:00 pm	All Welcome
7 th	River Vista HOA Board Meeting	7:00 - 9:00 pm	HOA Members Only
8 th	PSL Orchid Society	12:00 - 3:00 pm	All Welcome
8 th	Master Naturalists Meeting	7:00 - 9:00 pm	Members Welcome
9 th	Intermediate Spanish Class	10:00 - 11:30 am	All Welcome
9 th	Ft. Pierce Jazz & Blues Jazz Jams	6:30 - 9:30 pm	\$6 Donation, \$5 Members
10 th	PSL Angler's Meeting	5:30 - 9:30 pm	All Welcome
12 th	PSL Anglers Nautical Flea Market	8:00 am - 3:00 pm	All Welcome
13 th	Crosstown Chapel Sunday Service	9:30 - 11:00 am	All Welcome
13 th	South Florida Daylily Society	2:00 - 4:00 pm	All Welcome
14 th	Rio Lindo Board Meeting	10:00 - 11:00 am	Members Welcome
14 th	2020 Gala Committee Meeting	3:00 - 4:15 pm	All Welcome
14 th	FPSLBG Board of Directors Meeting	4:30 - 6:30 pm	Members Welcome
16 th	Intermediate Spanish Class	10:00 - 11:30 am	All Welcome
17 th	Treasure Coast Rare Fruit Club Meeting	7:00 - 9:00 pm	All Welcome
18 th	Arbor Day Celebration & Tree Planting Ceremony (Secret Garden)	11:00 am - 12:30 pm	All Welcome
19 th	Wacky Weeders	8:00 am - 12:00 pm	All Welcome
20 th	Crosstown Chapel Sunday Service	9:30 - 11:00 am	All Welcome
21 st	TC Bromeliad Society Meeting	5:30 - 9:00 pm	All Welcome
23 rd	Intermediate Spanish Class	10:00 - 11:30 am	All Welcome
23 rd	Ft. Pierce Jazz & Blues Jazz Jams	6:30 - 9:30 pm	\$6 Donation, \$5 Members
24 th	TC Professional Photographers Assoc.	6:00 - 8:30 pm	All Welcome
25 th	Veterans Victory Corps.	9:00 - 10:00 am	Veterans Welcome
27 th	Crosstown Chapel Sunday Service	9:30 - 11:00 am	All Welcome
28 th	Rio Lindo Garden Club Meeting	12:45 - 3:30 pm	All Welcome
28 th	Friends' Annual Meeting & Elections	5:30 - 8:30 pm	Members Welcome
30 th	Intermediate Spanish Class	10:00 - 11:30 am	All Welcome
30 th	German American Board Meeting	2:00 pm - 4:00 pm	Members Welcome



www.PSLBG.org • The Gardens is closed Mondays & Tuesdays
For more information on events, please call 772.337.1959



GLHOMES®

WELCOME HOME

GL Homes

**VALENCIA CAY AT RIVERLAND
PORT ST. LUCIE**

55+ Lifestyle
from the \$200s
(772) 226-9000



©2018 Pricing subject to change without notice. An equal housing opportunity. 0500-439 9-4-18



UF | IFAS Extension

UNIVERSITY of FLORIDA

University of Florida IFAS Extension Central Florida Gardening Calendar - January

What to Plant

Annuals/Bedding plants: Plants that can be added to the garden during the coolest months include begonia, browallia, lobelia, dianthus, dusty miller, and nicotiana. **See Annuals:** http://edis.ifas.ufl.edu/topic_annual_landscape_plants

Bulbs: Winter is a great time to plant bulbs that will bloom in the spring. Some examples include Clivia lily, crinum, and agapanthus. **See Bulbs for Florida:** http://edis.ifas.ufl.edu/topic_bulbous_flowers

Herbs: Many herbs will thrive now that temperatures are cooler, including tarragon, thyme, dill, fennel, and any of the mints. **See Herbs:** http://edis.ifas.ufl.edu/topic_herbs

Vegetables: Many vegetables can be planted this time of year. This the last month to plant Irish potatoes, beets, broccoli, brussels sprouts, cabbage, cauliflower, collards, kale, mustard, and turnips. **See Vegetable Gardening in Florida:** http://edis.ifas.ufl.edu/topic_vegetable_gardening

What to Do

Landscape: It is a good time to plant woody shrubs. Water frequently to get new plantings off to a good start. **See The Florida-Friendly Landscaping™ Guide to Plant Selection and Landscape Design:** http://fyn.ifas.ufl.edu/pdf/FYN_Plant_Selection_Guide_v090110.pdf and **Shrubs:** http://edis.ifas.ufl.edu/topic_shrubs

Irrigation: Water plants if temperatures remain higher than normal and rainfall is scarce. **See Landscape Irrigation:** http://edis.ifas.ufl.edu/topic_landscape_irrigation

Shrubs and trees: Prune non-spring flowering shrubs and trees this month to improve form. **See Pruning Landscape Trees and Shrubs:** http://edis.ifas.ufl.edu/topic_tree_pruning

Arbor Day: Celebrate Florida Arbor Day (the 3rd Friday of January) by planting a tree in your yard or community. **See Arbor Day in Florida:** http://edis.ifas.ufl.edu/topic_arbor_day

Crapemyrtle: Remove seed pods, crossing branches, and small twiggy growth to improve the appearance and form of the plant, if desired. Hard pruning is not required. **See Crapemyrtle:** http://edis.ifas.ufl.edu/topic_crapemyrtle

Cold protection: Bring sensitive plants like orchids inside if a frost or freeze is predicted. Thoroughly water and cover sensitive plants in the landscape 12–24 hours before a freeze. **See Cold Protection and Chilling Damage of Landscape Plants:** http://edis.ifas.ufl.edu/topic_landscapes_and_cold

Pests: Apply horticultural oil to citrus, shrubs, and deciduous fruit trees while plants are dormant to control scale. Apply copper spray to mangos after bloom. **See Landscape Pest Management:** http://edis.ifas.ufl.edu/topic_landscape_pests **Protect:** Protect tender orchid, impatiens, and tomato from falling temperatures. **See Cold Protection and Chilling Damage of Landscape Plants:** http://edis.ifas.ufl.edu/topic_landscapes_and_cold

WHAT'S FLOWERING in Florida?

JANUARY

NORTH/
CENTRAL

Camellia

Non-native, evergreen (*Camellia* spp.)

Red Maple

Native, deciduous (*Acer rubrum*)

Hong Kong Orchid Tree

Non-native, evergreen (*Bauhinia blakeana*)

White Frangipani

Non-native, deciduous (*Plumeria alba*)

SOUTH

UF IFAS Extension
UNIVERSITY of FLORIDA



**Gardening
SOLUTIONS**

For more information, please visit
GardeningSolutions.ifas.ufl.edu

EDIBLES TO PLANT IN JANUARY

	North	Central	South
Easily Survives Transplanting	Arugula, Beets, Broccoli, Brussels Sprouts, Cabbage, Cauliflower, Chinese Cabbage, Collards, Endive/Escarole, Kale, Kohlrabi, Lettuce, Swiss Chard	Arugula, Beets, Broccoli, Brussels Sprouts, Cabbage, Cauliflower, Chinese Cabbage, Collards, Eggplant, Endive/Escarole, Kale, Kohlrabi, Lettuce, Pepper, Swiss Chard, Tomatoes	Arugula, Beets, Broccoli, Brussels Sprouts, Cabbage, Cauliflower, Chinese Cabbage, Collards, Eggplant, Endive/Escarole, Kale, Kohlrabi, Lettuce, Pepper, Sweet Potatoes, Swiss Chard, Tomatoes
Survives Careful Transplanting	Carrots, Celery, Mustard, Potatoes, Spinach	Carrots, Celery, Mustard, Potatoes, Spinach	Carrots, Celery, Mustard, Potatoes, Spinach
Use Seeds	Onion (bunching, shallots), Peas (English), Radish, Turnip	Cantaloupes, Corn, Cucumbers, Onion (bunching, shallot), Peas (English), Radish, Squash (summer, winter), Turnip, Watermelon	Beans (bush, pole, lima), Cantaloupes, Corn, Cucumbers, Okra, Onion (bunching, shallot), Peas (English, southern), Radish, Squash (summer, winter), Turnip, Watermelon

UF IFAS Extension
UNIVERSITY of FLORIDA



**Gardening
SOLUTIONS**

THANK YOU!

Secret Garden Plaque Dedication



Brenda Gustafson, Vice President and Chair of the Horticulture Committee, presents 'The Dynamic Trio' L. to R., Merv Yearwood, Paul Renwick & Gene Kovacs Certificates of 'Sincere thanks for their skills in vision, design and creating True Art in the Gardens'. A plaque will be placed in their honor in the Secret Garden.





Partners in Horticulture Education

UF IFAS Extension
UNIVERSITY OF FLORIDA



With the assistance of the St. Lucie County Master Gardeners and PSLBG volunteers, students and Veterans learn basic Horticulture practices.

High School Horticulture Club



Learn and Earn Community Service hours!

Students can volunteer in the Gardens year round. During the school year Horticulture workshops are offered. Workshops and Garden Time hours count toward students' volunteer community service hours. Open to all High School students! Add your school logo to our growing Horticulture partnership.

Contact Jeffrey Chambers, Volunteer Chair at 772-337-1959 for more information.

Veteran Victory Corps:



A horticulture program for Veterans and their family members! Enjoy comradery, hands-on workshops, and opportunities for providing service to your community!



VVC meets on the **4th Saturday of the month from 0900-1000** in the Veteran Victory Corps area near the GL Homes Green House in the Garden Center (**weather permitting – or check at the Welcome Center in the Pavilion**) Bring your own morning drink.

Contact: Judy, American Red Cross - Service to the Armed Forces at judy.nash-wade@redcross.org or PSLBG at 772-337-1959.





PORT ST. LUCIE
PARKS &
RECREATION



THE SAINTS

At Port St. Lucie Golf Course
www.CityofPSL.com/Golf

2601 SE Morningside Blvd. • (772) 398-2901
Port St. Lucie, FL 34952 • Fax: (772) 398-2778



Mark A. Barnes

Making You & Your business Look Great

772.801.8800

Mark@MarkBarnesMusic.com

Business Card Designs
Logo Designs
Graphic Designs
Specialty Cards
Real Estate Ads & Designs
Video Home Tours
Basic Web Sites
Copyright Services
ASCAP & Music Site Setup
QR Code Design
Video Bios and Resumes
Power Point Presentations
Virtual Assistant
Real Estate Services



at the Port St. Lucie Botanical Gardens

WEDNESDAY

JANUARY 9TH & 23RD

6:30 - 9:30 PM

Presented By



Annual Treasure Coast NAUTICAL FLEA MARKET

Sponsored by Port St. Lucie Angler's Club
and the Port St. Lucie Botanical Gardens

***** FREE ADMISSION *****

BOATING, FISHING GEAR & FOOD FOR SALE
For information call Frank Gamber 772.237.2238

Vendor Application on club's website WWW.PSLANGLERS.COM

January 12th, 2019
Saturday • 8am - 3pm





Date: Friday, January 18, 2019

Time: 11a.m.

Public is Invited! Join us in celebrating Florida Arbor Day at the Port St Lucie Botanical Gardens with the planting of our 2019 Arbor Day tree

**2410 SE Westmoreland Blvd,
south of PSL Blvd.**

Donations are welcome. Please mail to 2410 SE Westmoreland Blvd, PSL 34952. Minimum donation is \$25.00, please. Forms are available at the Port St Lucie Botanical Gardens Office. The Book of Remembrance is located in the Gardens' Pavilion for public review.

Contact 772.337.1959 for information

Arbor Day

Friends' Annual Meeting & Board Elections



**Friends of the Port St. Lucie Botanical Gardens
will hold their Annual Meeting
and Board Elections on
Monday, January 28, 2019 @ 5:30 pm.**

**All members are encouraged to cast their ballot and
we welcome you to attend our annual meeting.**

SAVE THE DATE

SAVE THE DATE

Join Us



Sponsored By **GLHOMES®**

February 9th & 10th, 2019
9 am - 4 pm • Saturday & Sunday

FREE Parking • Plant carry out service available
FREE admission to the park & plant sale
A \$1 donation or more will help our Gardens
to grow and is always gratefully appreciated.

Are you a Member of Friends? Friends Membership is...



Horticulture



Education



Community



Preservation

**Friends of the Port St. Lucie Botanical Gardens, Inc.,
We Are A Growing Community!**



**Click Here to
Join or Renew Your
Membership Today**