



# EXpressLO LLC *Nicola CRYO™* For Cryo-EXLO

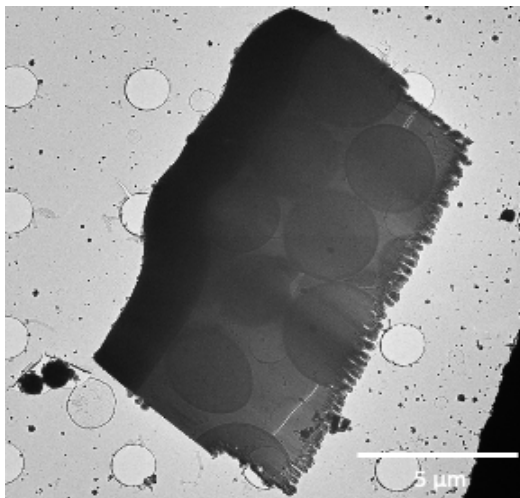
EXpressLO LLC  
5483 Lee St., Ste 12  
Lehigh Acres, FL 33971 USA

+1-321-663-3806  
www.EXpressLO.com  
info@EXpressLO.com

The *Nicola CRYO™* *ex situ* lift out (EXLO) system and methods represents a paradigm shift for lift out of cryo-FIB prepared specimens. It combines the renowned fast and easy methods of EXLO with manipulation of a specimen under cryogenic conditions\*.

\*see Giannuzzi et al., *Microscopy & Microanalysis* (2023).  
( <https://doi.org/10.1093/micmic/ozac029>)

Vitreous Yeast Sample Manipulated by CRYO-EXLO

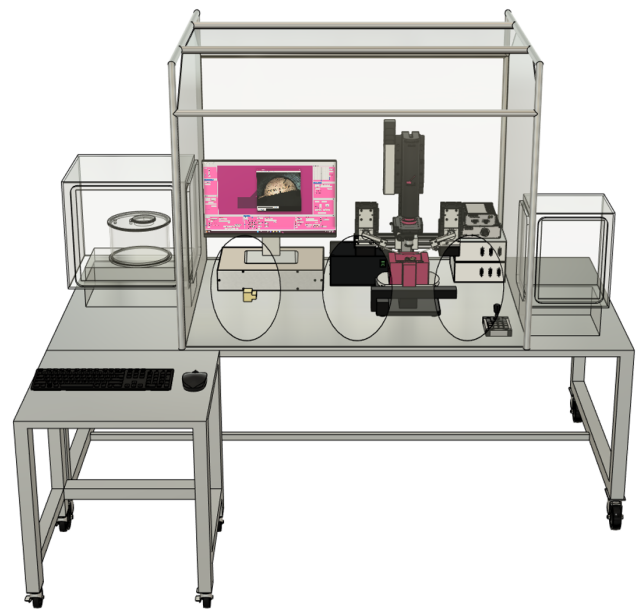


## Advantages and Benefits of *Nicola CRYO™*

- ✓ Can be used for physical or biological materials.
- ✓ Faster and easy for higher throughput.
- ✓ No expensive or time consuming FIB time needed for the lift out steps.

## Features of *Nicola CRYO™*

- ✓ Fully integrated user interface with software control of stage movement, microscope zoom and focus, and dual manipulators.
- ✓ Fully integrated cryostat and vacuum transfer chamber for multiple 3<sup>rd</sup> party cryo-FIB stages.
- ✓ Fully integrated glove box for humidity and environmental control.
- ✓ *Nicola CRYO™* is Patent Pending.



*Nicola CRYO™*

Now taking orders.

Please contact us for more information.

ExpressLO *Nicola CRYO™* Installation Requirements – 110-120 V, 60 Hz, 20A  
 N<sub>2</sub> or Ar Gas source

