

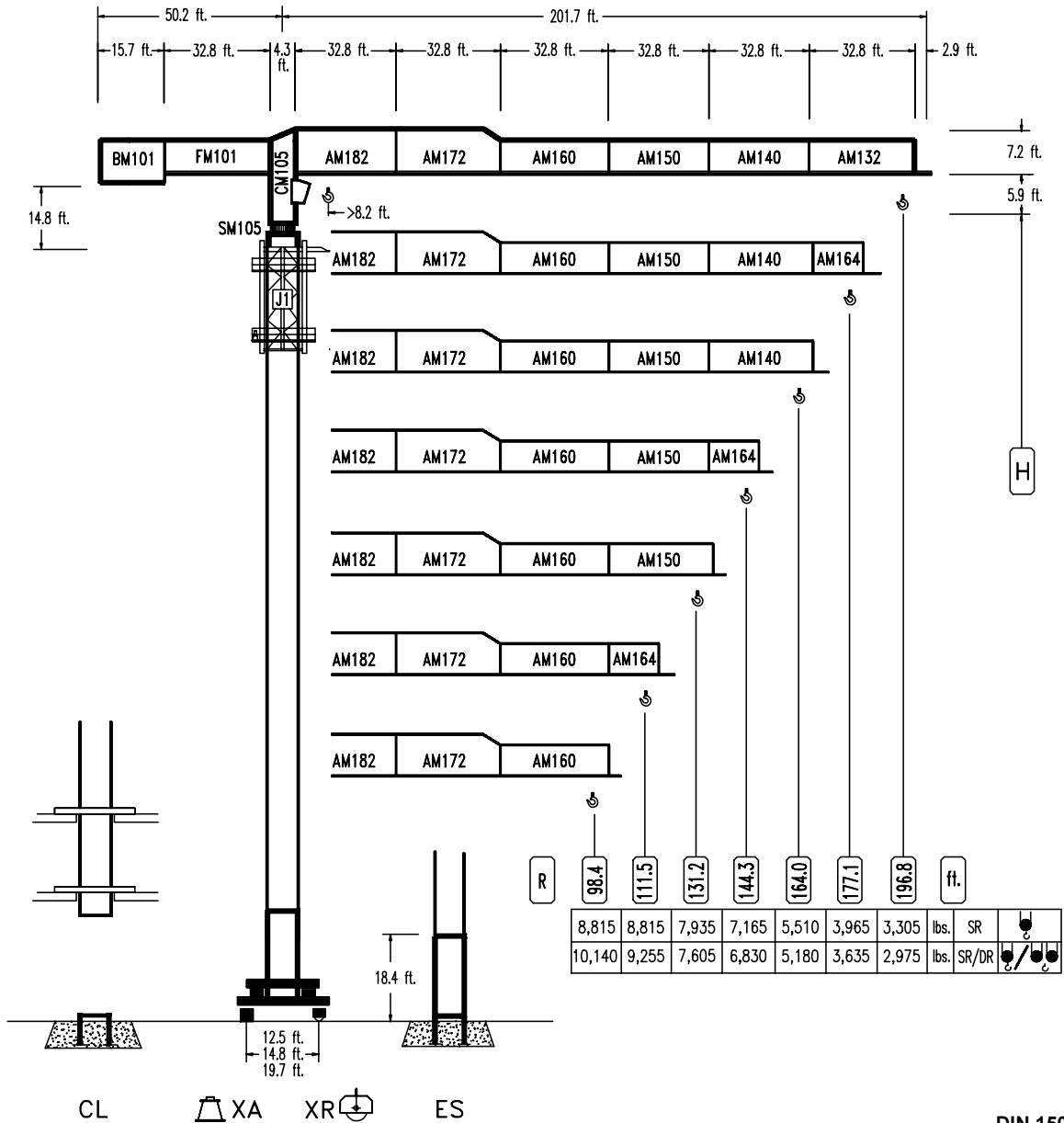


COMANSA

LINDEN 1000

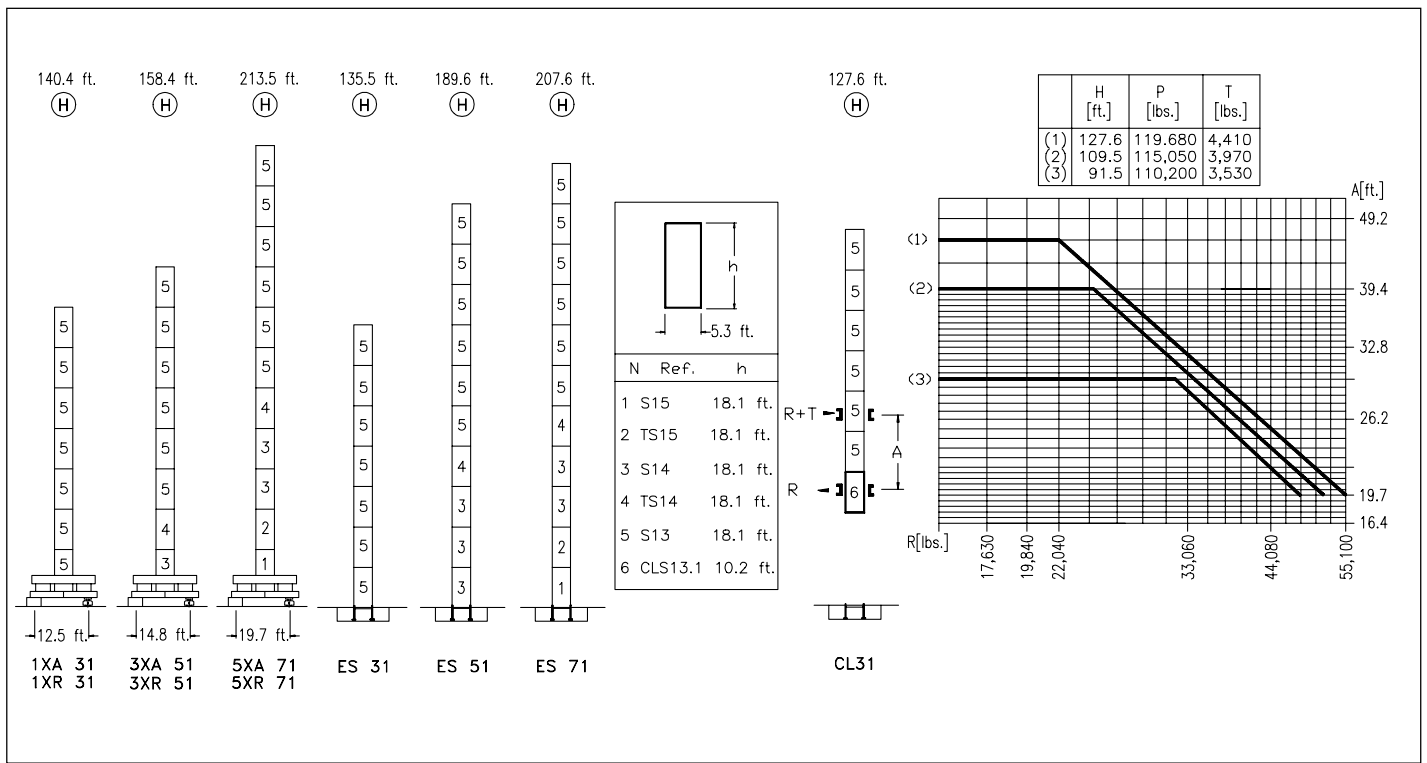
LC-1060

ft./lbs.



CE
DIN 15018 H1 B3

R	R(Cmax)	Cmax	82.0	98.4	111.5	131.2	144.3	164.0	177.1	196.8	ft.	lbs.
196.8	SR SR/DR	86.6 ft. 46.3 ft.	8,815 17,630	8,815 9,135	7,625 7,360	6,610 6,315	5,455 5,155	4,870 4,560	4,165 3,845	3,780 3,460	3,305 2,975	
177.1	SR SR/DR	90.2 ft. 47.9 ft.	8,815 17,630	8,815 9,530	7,965 7,680	6,900 6,600	5,710 5,400	5,090 4,785	4,365 4,035	3,965 3,635		
164.0	SR SR/DR	109.2 ft. 57.8 ft.	8,815 17,630	8,815 11,845	8,815 9,600	8,595 8,300	7,140 6,830	6,405 6,085	5,510 5,180			
144.3	SR SR/DR	117.1 ft. 61.7 ft.	8,815 17,630	8,815 12,795	8,815 10,390	8,815 8,995	7,750 7,415	6,945 6,610				
131.2	SR SR/DR	118.1 ft. 62.0 ft.	8,815 17,630	8,815 12,915	8,815 10,490	8,815 9,080	7,825 7,495					
111.5	SR SR/DR	111.5 ft. 63.3 ft.	8,815 17,630	8,815 13,160	8,815 10,690	8,815 9,255						
98.4	SR SR/DR	98.4 ft. 63.0 ft.	8,815 17,630	8,815 13,160	8,815 10,690							



CS3-3.7
4.4 hp.

33 ft./min
108 ft./min
216 ft./min

GR-7.5
2 x 55 ft.lbs.

0 ϕ 0,7 rpm

TS2-5.5 | **TRA-7.5**
2 x 40 ft.lbs. 2 x 55 ft.lbs.

0 ϕ 66 ft./min

1XR31 | **5XR 71**
3XR51

TS2-5.5VC | **TRA-7.5VC**
2 x 40 ft.lbs. 2 x 55 ft.lbs.

0 ϕ 66 ft./min

1XR31 | **5XR 71**
3XR51

ES3-25-20
30 hp.

		I	II	III
SR	ft./min	28	110	220
	lbs.	8,815	8,815	4,410
DR	ft./min	14	55	110
	lbs.	17,630	17,630	8,815

CFU-4.0
4.8 hp.

0 ϕ 216 ft./min

EFU2-24-20
29 hp.

ft./min	lbs.
98.4	8815
131.2	6610
164.0	4410
196.8	2205
229.6	8815
252.6	4410

ft./min	lbs.
49.2	17630
65.6	13225
82.0	8815
98.4	4410
114.6	8815
126.3	4410

ES3-33-20
40 hp.

		I	II	III
SR	ft./min	35	140	280
	lbs.	8,815	8,815	4,410
DR	ft./min	17.5	70	140
	lbs.	17,630	17,630	8,815

Tensión de alimentación Operating voltage	480 V 3 ph 60 Hz
--	---

Opcional Optional	*
----------------------	----------

R. máx. En servicio In operation	1XR31 160,230 lbs. 3XR51 147,230 lbs. 5XR71 176,760 lbs.
--	---

R. máx. Fuera de servicio Out of service	1XR31 191,970 lbs. 3XR51 205,850 lbs. 5XR71 277,260 lbs.
--	---

NOTE: ALL ORIGINAL WEIGHTS AND MEASUREMENTS ARE METRIC AND ABOVE ARE ROUNDED-OFF CONVERSIONS OF SAME. FOR EXACT WEIGHTS AND MEASUREMENTS, SEE SHEET DS.0102.15



Construcciones Metálicas COMANSA S. A.
Polígono Industrial de Areta
E-31620 Huarte-Pamplona.- SPAIN
Tel.: (34) 948 335 020 - Fax: (34) 948 330 810
e-mail: info@comansa.com

DS.0108.01	02/01	LC-1060/ft.lbs.
-------------------	-------	------------------------