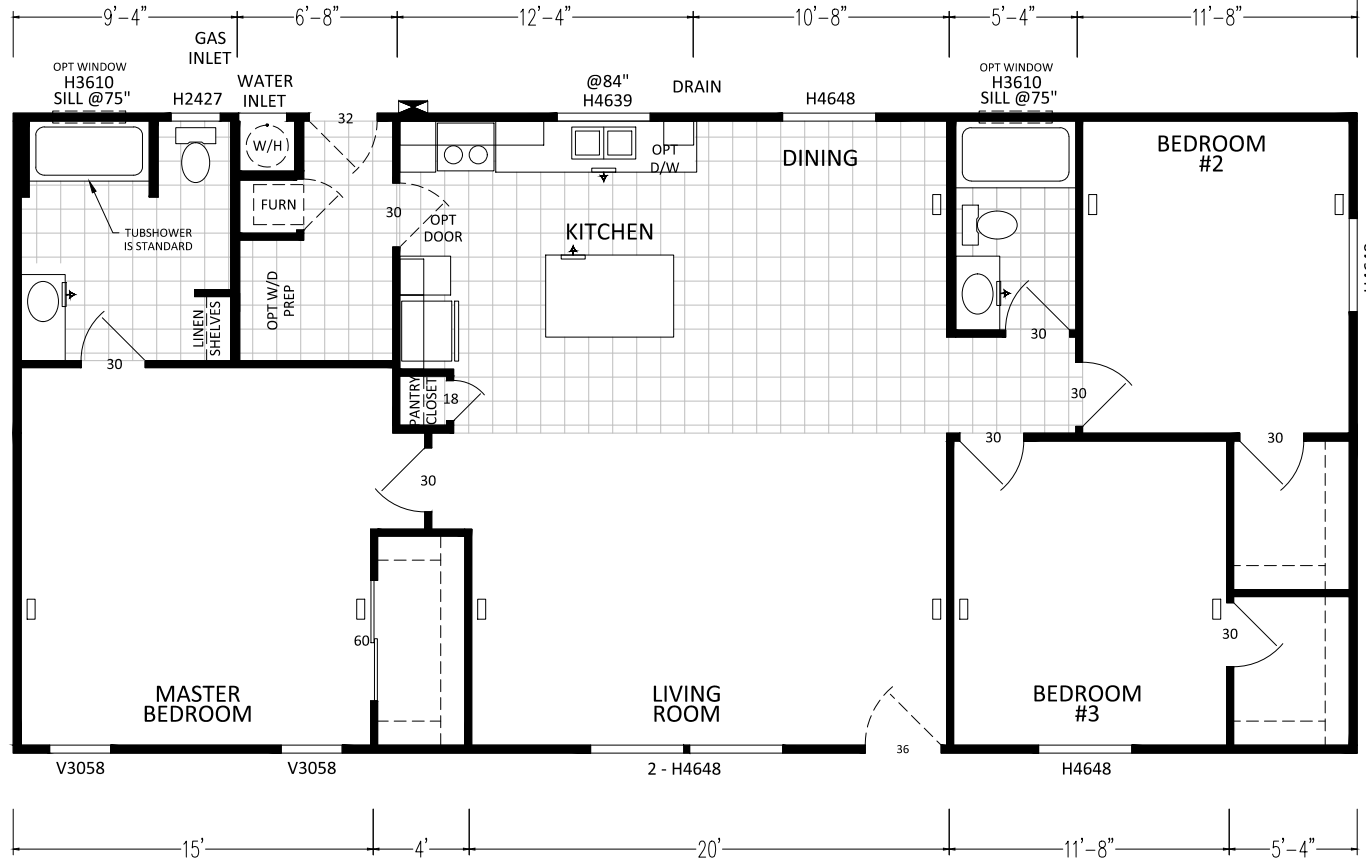


ROOM DIMENSIONS MAY CHANGE PER CONSTRUCTION PRINTS.

SHIP AS 16 WIDE

6' SGD
OPTIONAL S.G.D.



3448CT 3BD - 2BA 5628 (1493 SQ. FT. LIVING)

SCALE: 1/8" = 1'-0"

CUSTOMER: ----



DIVISION 31, P.O. BOX 670
SAN JACINTO, CA 92581
(951) 654-9321

REVISIONS

REVISION DATE:

DRAW DATE: 6-19-17

DRAWING TITLE:

MODEL NO.

MODEL REV.

SHEET NO.

REVISION BY:

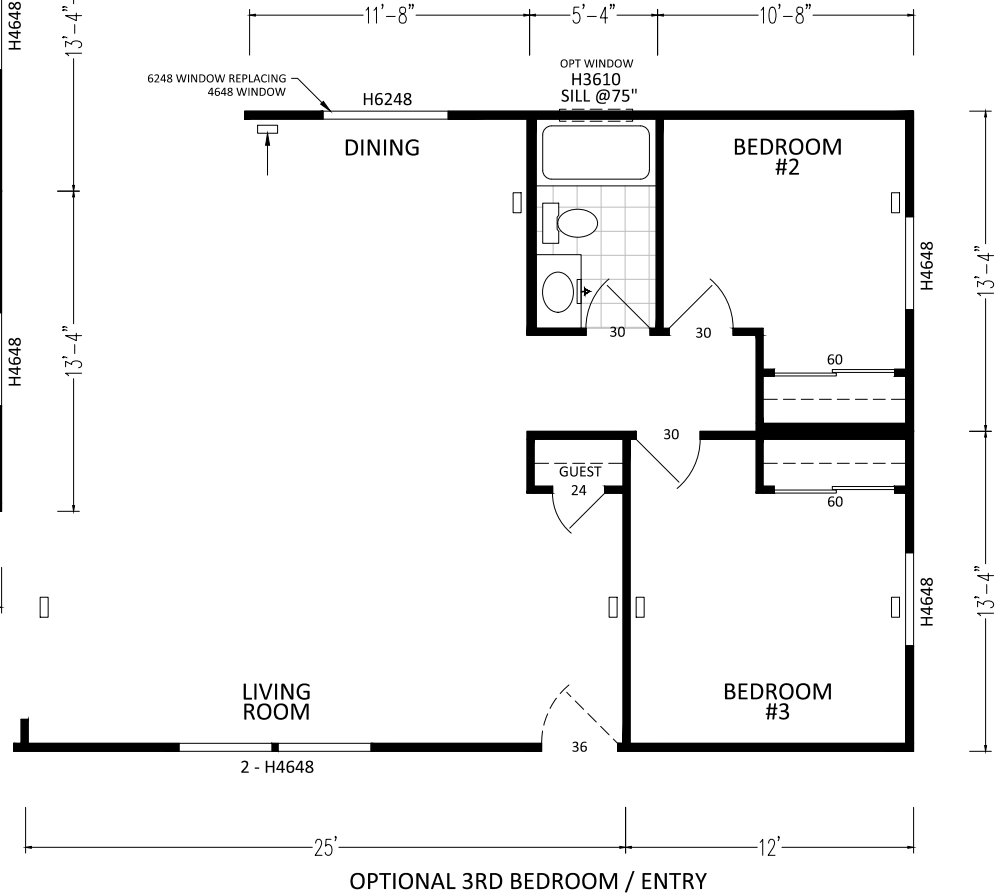
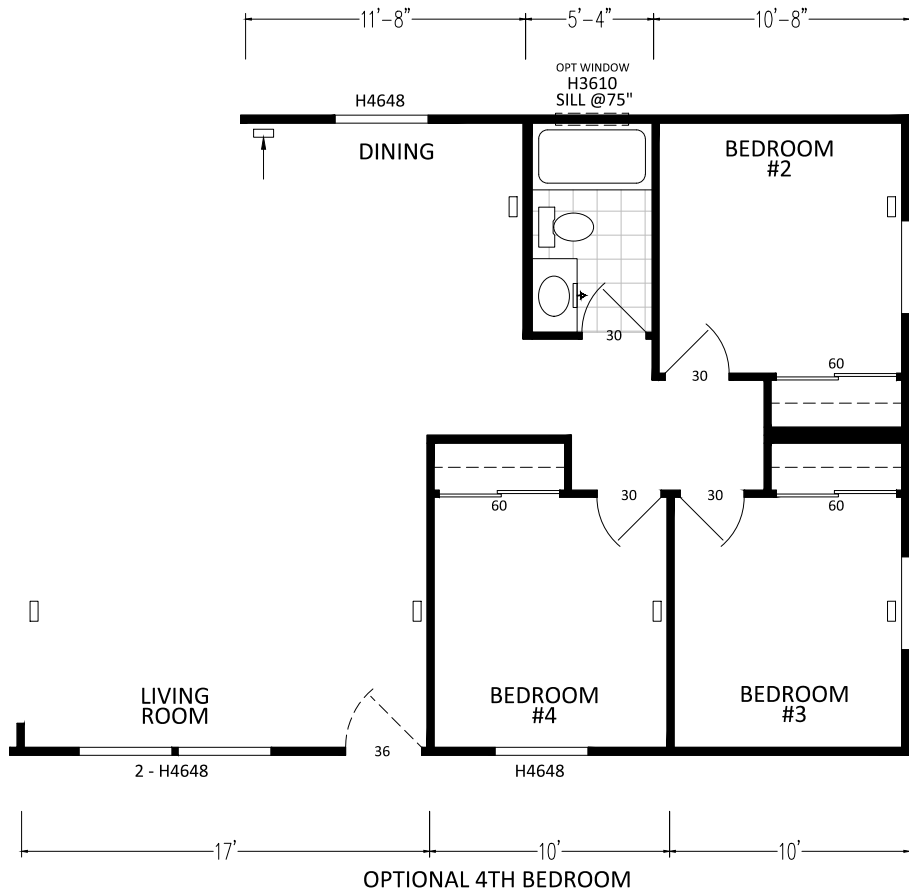
DRAWN BY: DCS

SALES FLOOR PLAN
5628-3BD-2BA

3448CT

DAPIA REV. 2

REF NO. ----



SCALE: 1/8" = 1'-0"



DIVISION 31, P.O. BOX 670
 SAN JACINTO, CA 92581
 (951) 654-9321

REVISIONS

REVISION DATE:

DRAW DATE: 6-19-17

DRAWING TITLE:

MODEL NO.

MODEL REV. D

SHEET NO. AL-102

REVISION BY:

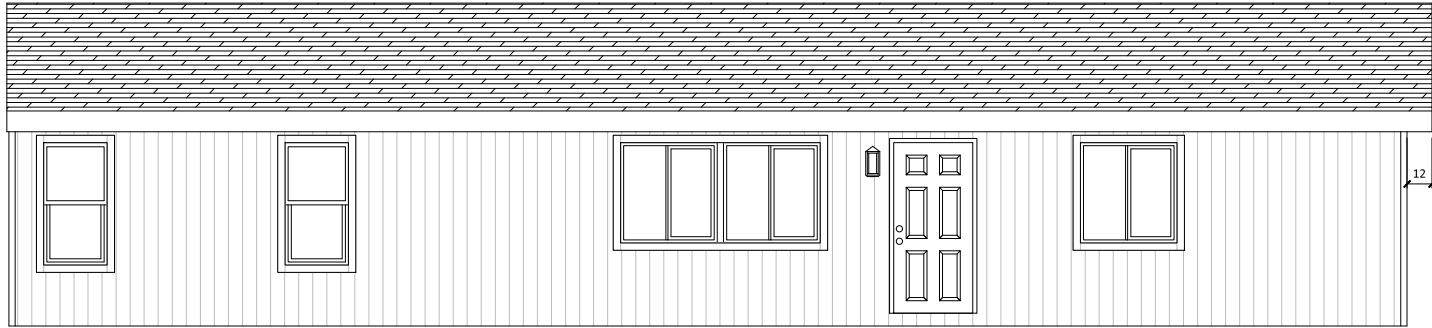
DRAWN BY: DCS

SALES FLOOR PLAN OPTIONS
 5628-3BD-2BA

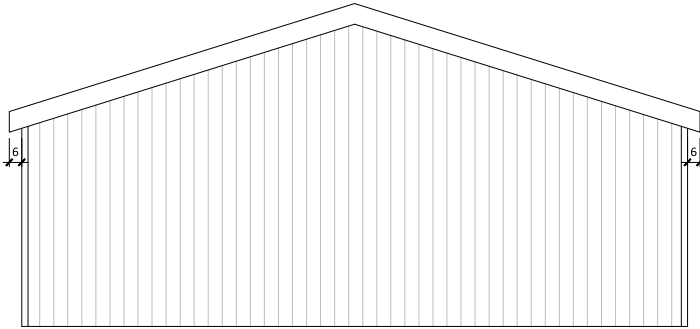
3448CT

DAPIA REV. 2

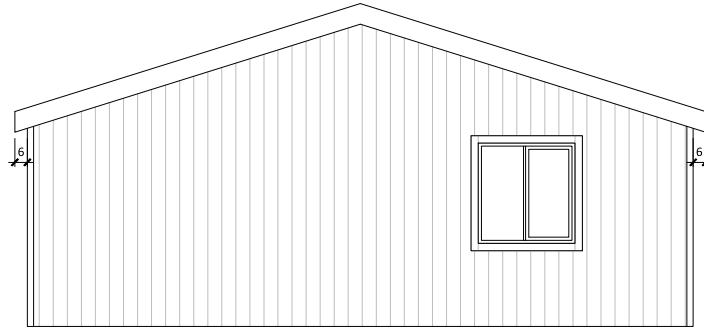
REF NO. ----



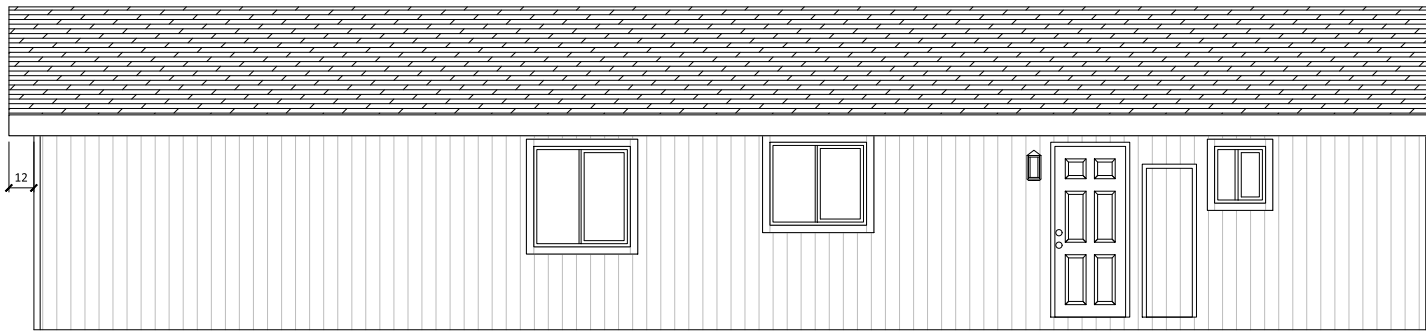
LEFT



REAR



FRONT



RIGHT

CUSTOMER: ----



DIVISION 31, P.O. BOX 670
SAN JACINTO, CA 92581
(951) 654-9321

REVISIONS

REVISION DATE:

DRAW DATE: 6-19-17

DRAWING TITLE:

MODEL NO.

MODEL REV. D

SHEET NO. AE-101

REVISION BY:

DRAWN BY: DCS

EXTERIOR ELEVATIONS
5628-3BD-2BA

3448CT

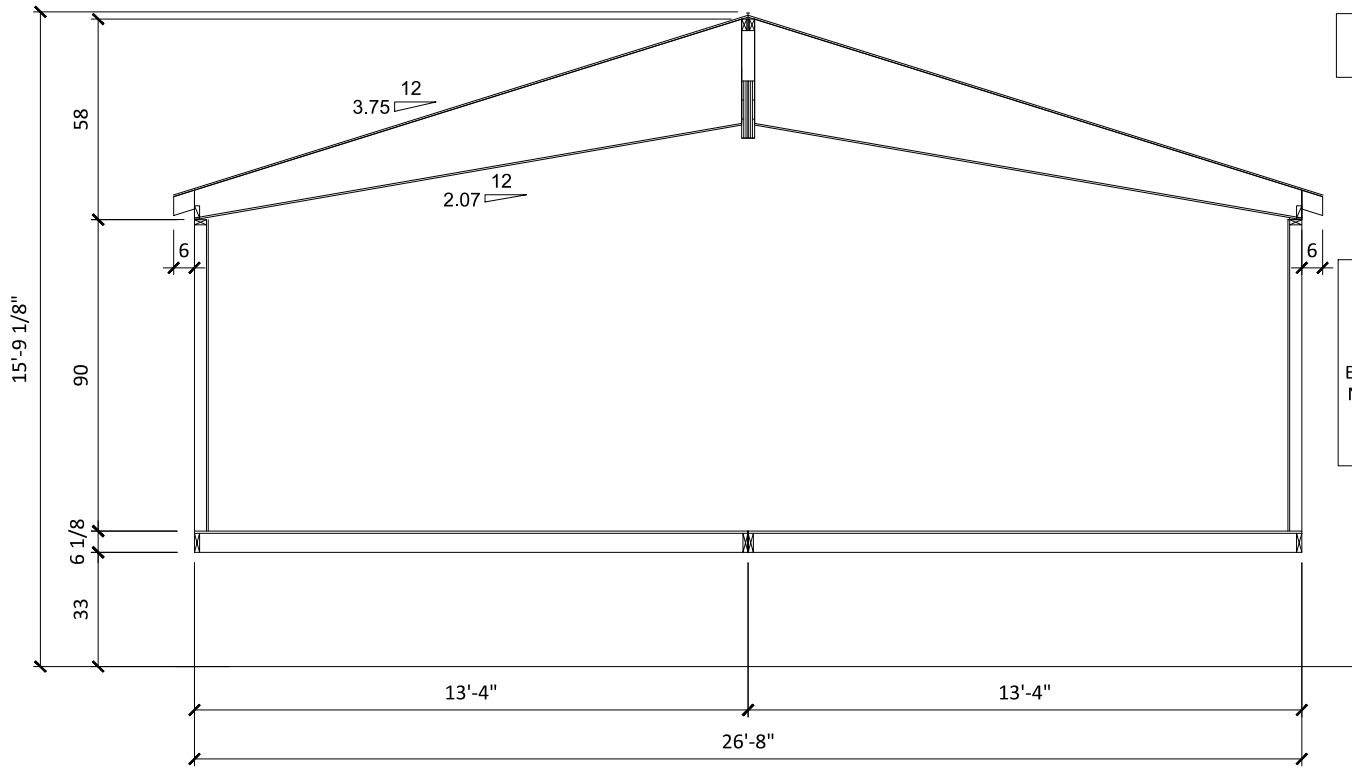
DAPIA REV. 2

REF NO. ----

F-261 TRUSS

F-261 TRUSS

SHIP AS 16-WIDE



UNIT DIMENSIONS ARE NOT TO BE USED AS SHIPPING DIMENSIONS.

CUSTOMER: ----



DIVISION 31, P.O. BOX 670
SAN JACINTO, CA 92581
(951) 654-9321

REVISIONS	

REVISION DATE:	
REVISION BY:	

DRAW DATE:	6-19-17
DRAWN BY:	DCS

DRAWING TITLE:	CROSS SECTION
	5628-3BD-2BA

MODEL NO.	3448CT
-----------	--------

MODEL REV.	D
DAPIA REV.	2

SHEET NO.	AS-101
REF NO.	----