

APPLICABLE BUILDING CODES			
FLORIDA BUILDING CODE	2014	NFPA 101 LIFE SAFETY CODE, FL EDITION	2012
FLORIDA MECHANICAL CODE	2014		
NATIONAL ELECTRICAL CODE, FL EDITION	2011	NFPA 1 FIRE CODE, FL EDITION	2012
FLORIDA PLUMBING CODE	2014	FLORIDA ACCESSIBILITY CODE	2014
FLORIDA EXISTING BUILDING CODE	2014	LOCAL AMENDMENTS: - -	

GENERAL PROJECT DATA:	
PROJECT LOCATION:	2001 NE 10TH STREET POMPANO BEACH, FLORIDA 33060
PROJECT SUMMARY:	REPLACEMENT 4 BAY APPARATUS 2 STORY FIRE STATION WITH OFFICE ON THE FIRST FLOOR AND FIREFIGHTERS DORMITORIES AND LIVING AREA ON THE SECOND FLOOR
LEGAL DESCRIPTION:	SEE ATTACHED SURVEY

- NOTES:  
 1. SECURITY GATE WILL HAVE A KNOX BOX FOR FIRE DEPARTMENT ACCESS.  
 2. SEE CIRCULATION DRAWING A1.02 FOR FIRE DEPARTMENT ACCESS PATH.  
 3. SEE CIVIL DRAWINGS FOR FIRE HYDRANT, FIRE DEPARTMENT CONNECTION AND FIRE SERVICE CONNECTION.



LOCATION MAP

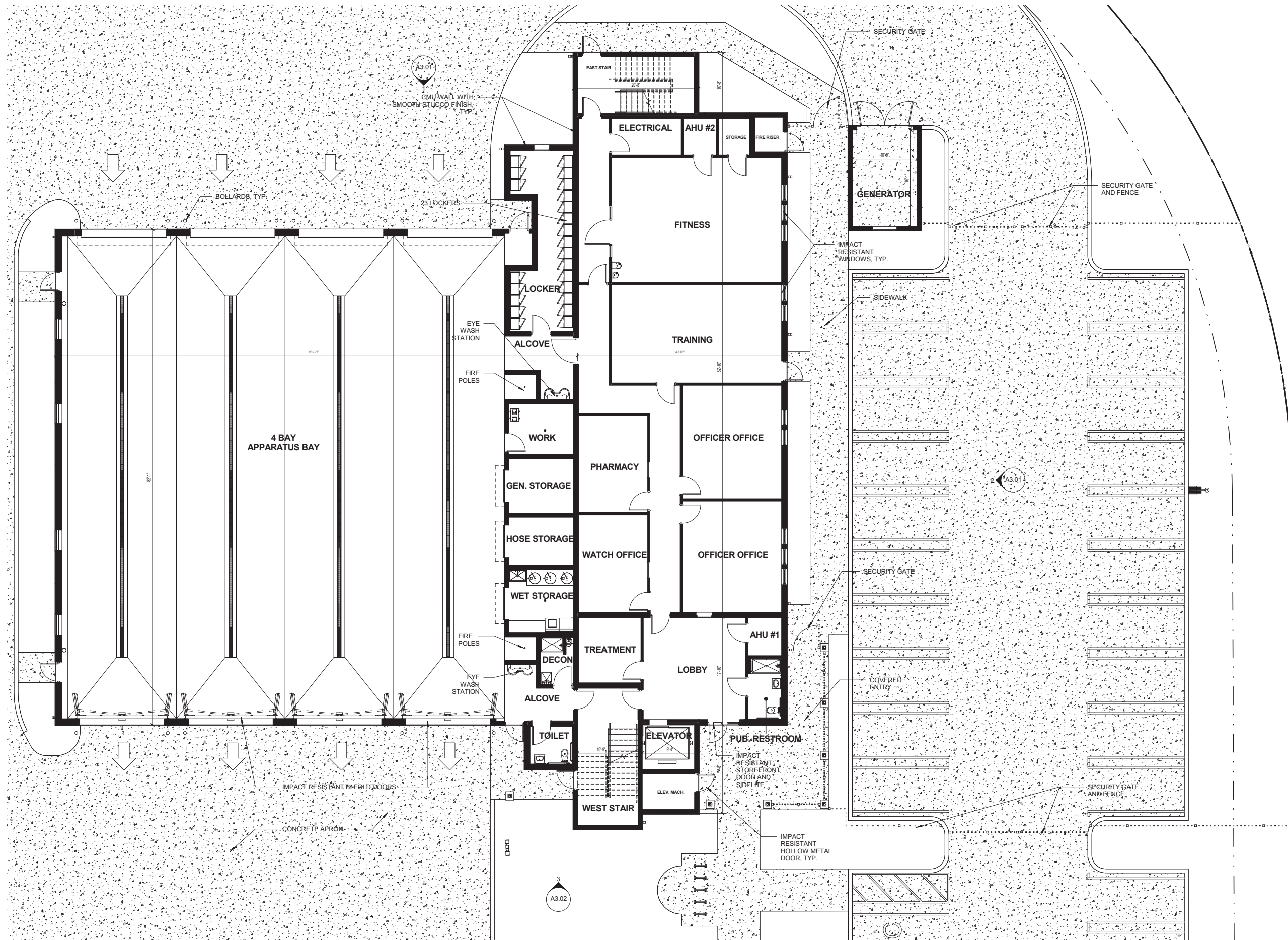
BUILDING DATA		
OCCUPANCY CLASSIFICATIONS: MIXED USE-BUSINESS (B), STORAGE (S-2), RESIDENTIAL (R-2, MOST RESTRICTIVE)		
TYPE OF CONSTRUCTION:	TYPE VB (SPRINKLERED)	
	CODE MAX:	PROPOSED:
HEIGHT:	60'	38'-0" (49.33 NAVD)
BUILDING SQUARE FOOTAGE		
FIRST FLOOR:		
GENERATOR (S-2)		216 SF (S-2)
APPARATUS BAYS (S-2)	26,250 SF PER FLOOR PER FBC TABLE 503	6,068 SF (S-2)
OFFICES/ TRAINING/ GYM (B)		5,280 SF (B)
SECOND FLOOR:		
DORMITORIES/ LIVING AREA (R-2)		4,761 SF (R-2)
BUILDING TOTAL SQ. FT.:		<b>16,325 SF</b>
NUMBER OF STORIES:	3	2

SITE DATA		BASED ON TRANSPORTATION ZONING		FLOOD ZONE- ZONE X
ZONING CLASSIFICATIONS:	T-TRANSPORTATION	SITE AREA:	GROSS: 53,590 SF NET ACREAGE: 1.2 ACRES	
LAND USE:	T-TRANSPORTATION			
		REQUIRED	NEW CONST BUILD'S	
LOT AREA:		N/ A	53,590 SF	
IMPERVIOUS AREA:		N/ A	37,749 SF	
PERVIOUS AREA:		N/ A	15,841 SF	
LOT COVERAGE:		N/ A	13,465 SF (25%)	
		SETBACKS-TRANSPORTATION		
FRONT YARD (N.E. 10TH STREET)	100 FEET FROM N.E. 10TH STREET	25' PENDING WAIVER		
INTERIOR SIDE YARD SETBACK	25 FEET	25 FEET		
REAR SIDE YARD SETBACK	25 FEET	25 FEET		
HEIGHT, MAXIMUM	50' MAXIMUM PER (APO) ZONING DISTRICT HEIGHT LIMITS	38'-0" (AIR SPACE STUDY SUBMITTED TO P & Z DEPT)		
PARKING:	1/500 PER GROSS SQ. FOOT	16,325 SF BUILDING TOTAL 6,284 SF APP. BAYS/GENERATOR 10,041 SF / 500= 21 PARKING SPACES 23 PARKING SPACES PROVIDED		

1 SITE PLAN  
A1.01  
1" = 20'-0"  
0 5 10 20'

DRC 2/10/2017

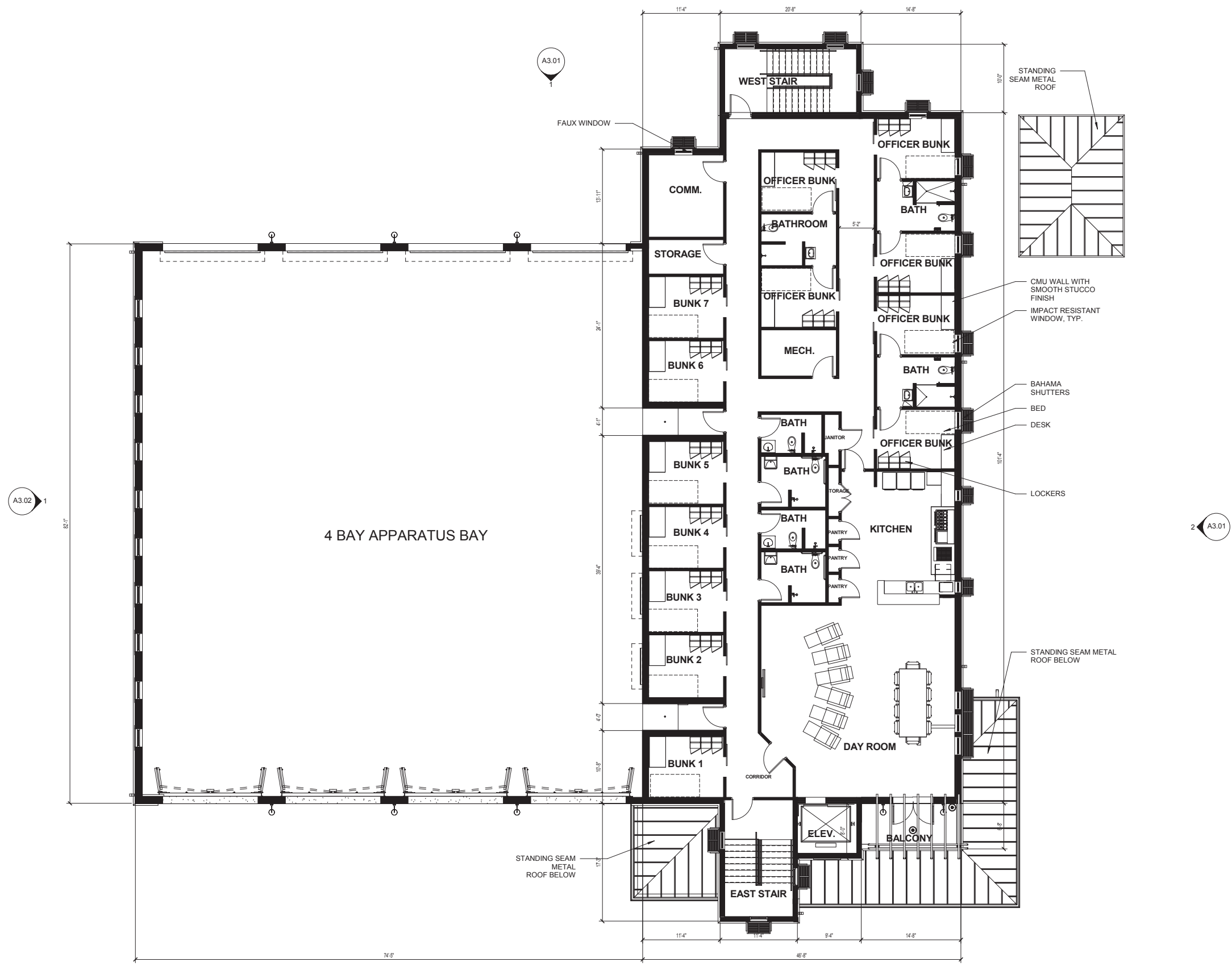




1 FIRST FLOOR PLAN 11,348 SF  
 A2.01 1/8" = 1'-0"   


DRC 2/10/2017

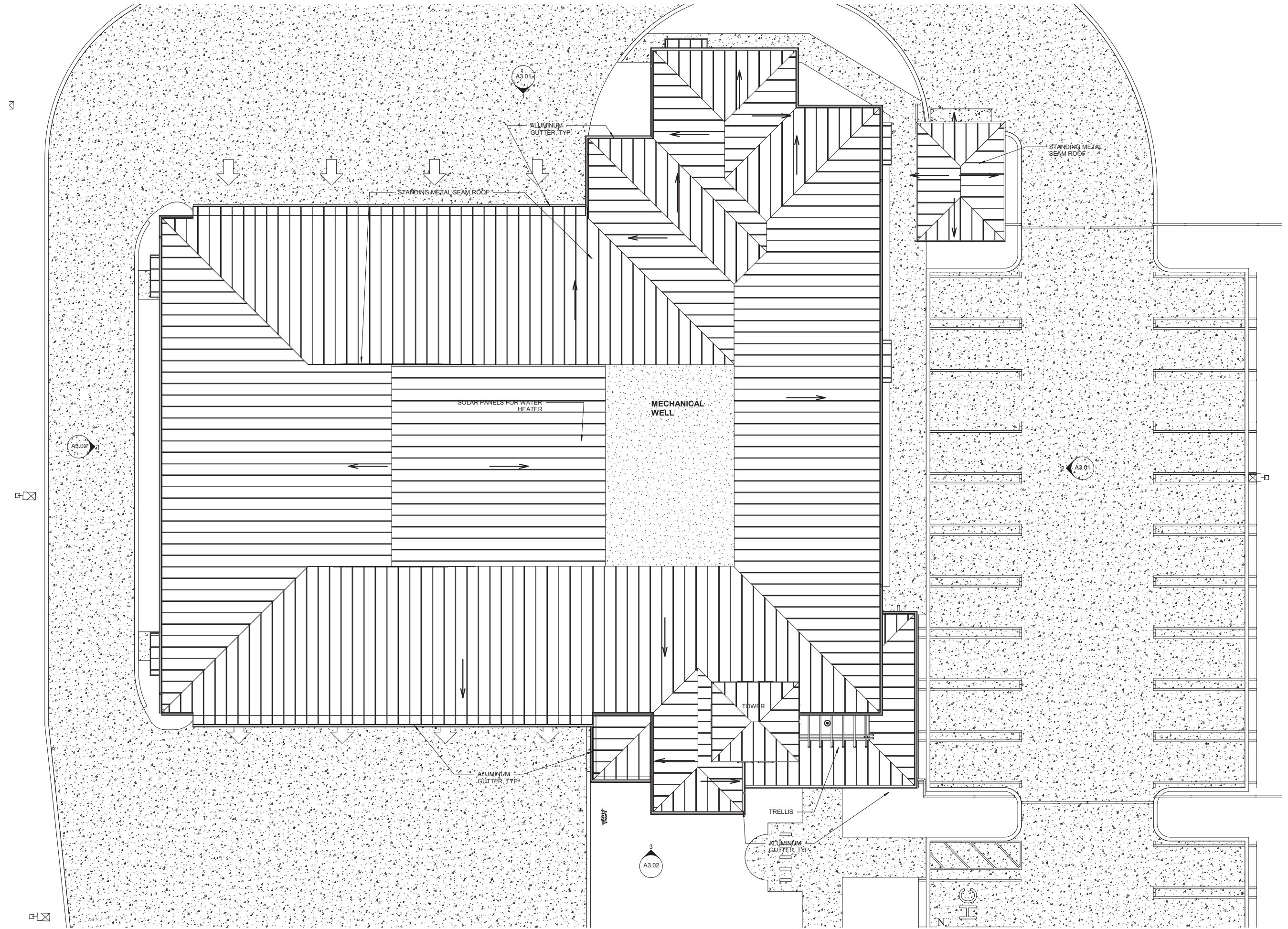
DRAWING NUMBER  
**A2.01**



1 SECOND FLOOR PLAN  
 A2.02 1/8" = 1'-0" 4,761 S.F.

DRC 2/10/2017

DRAWING NUMBER  
**A2.02**



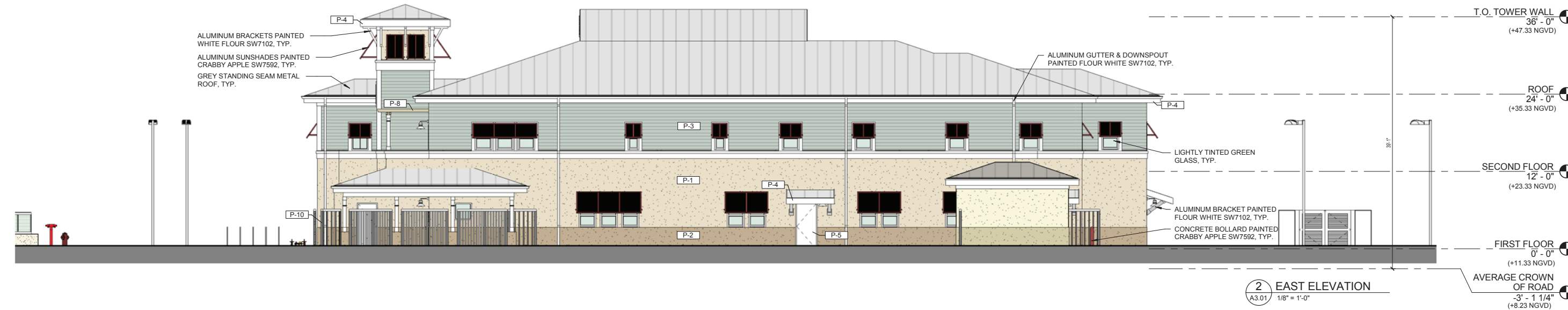
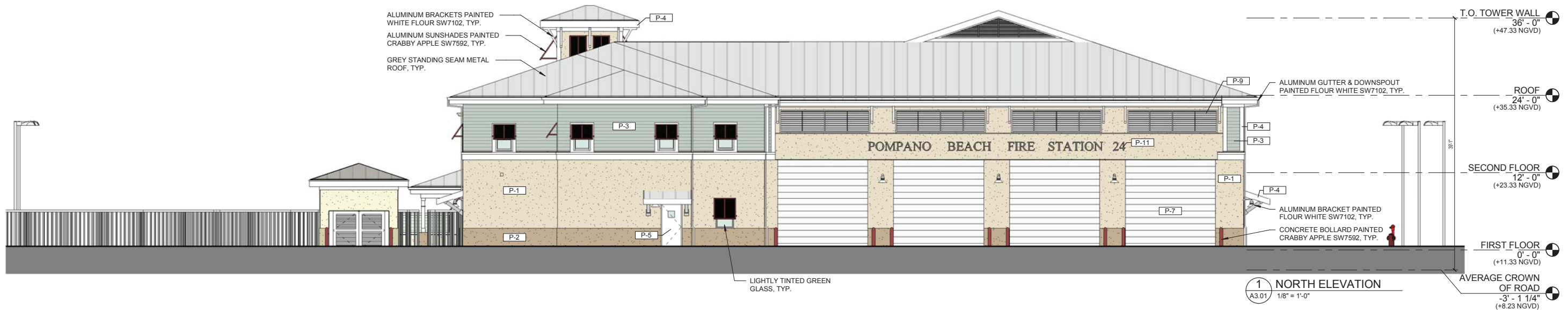
1 ROOF PLAN  
 A2.03 1/8" = 1'-0"



DRC 2/10/2017

DRAWING NUMBER

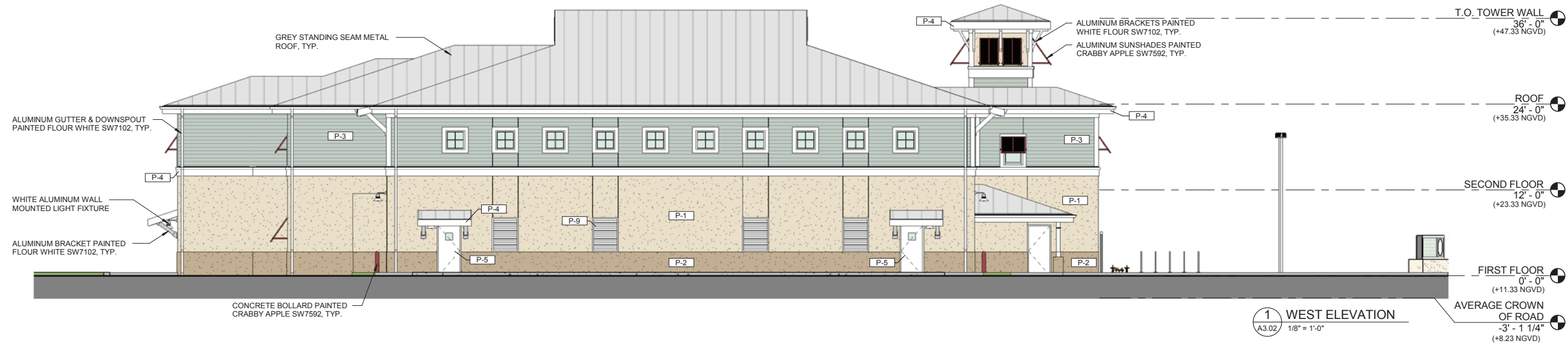
A2.03



EXTERIOR MATERIAL LEGEND	
ITEM	MATERIAL
P-1	SMOOTH STUCCO PAINTED MUSLIN SW6133
P-2	SMOOTH STUCCO PAINTED FAVORITE TAN SW6157
P-3	STUCCO FORMED SIDING PAINTED RAINWASHED SW6211
P-4	SMOOTH STUCCO PAINTED WHITE FLOUR SW7102
P-5	HOLLOW METAL DOOR PAINTED WHITE FLOUR SW7102
P-6	ALUMINUM BI-FOLD DOOR PAINTED CRABBY APPLE SW7592
P-7	ALUMINUM COILING DOOR PAINTED WHITE FLOUR SW7102
P-8	ALUMINUM TRELLIS PAINTED WHITE FLOUR SW7102
P-9	ALUMINUM LOUVER PAINTED WHITE FLOUR SW7102
P-10	ALUMINUM FENCE PAINTED WHITE FLOUR SW7102
P-11	BLACK CAST ALUMINUM LETTERS

EXTERIOR FINISHES	
<b>WALLS:</b>	
EXTERIOR WALLS:	--3/4" SMOOTH STUCCO, PAINTED --1" STUCCO REVEALS --FORMED STUCCO SIDING, PAINTED --RAISED SMOOTH STUCCO WATER TABLE, PAINTED
WALL/RAKE TRIM:	--STUCCO TRIM, PAINTED --STUCCO BAND, PAINTED
<b>DOOR:</b>	
DOORS:	--IMPACT HOLLOW METAL DOOR --IMPACT HOLLOW METAL DOOR WITH IMPACT GLAZING --IMPACT ALUMINUM STOREFRONT DOOR WITH IMPACT GLAZING SIDELIGHT --IMPACT ALUMINUM OVERHEAD COILING DOOR --IMPACT ALUMINUM BIFOLD DOOR WITH IMPACT GLAZING
<b>ROOFING:</b>	
ROOF:	--STANDING SEAM METAL ROOF
SOFFIT:	--SMOOTH STUCCO, PAINTED
FLASHING/COPING:	--ALUMINUM, PAINTED
GUTTERS/DOWNSPOUTS:	--ALUMINUM, PAINTED
<b>MISCELLANEOUS:</b>	
BRACKETS:	--ALUMINUM, PAINTED
SUN SHADES:	--ALUMINUM, PAINTED
TRELLIS:	--ALUMINUM, PAINTED
EXTERIOR LIGHTS:	--WALL MOUNTED CANOPY LIGHTING
FENCING:	--ALUMINUM, PAINTED
SIGNAGE:	--CAST ALUMINUM LETTERS, PAINTED --CAST STONE ORNAMENT
LOUVER:	--IMPACT ALUMINUM LOUVER, PAINTED
EYEBROW:	--CONCRETE, PAINTED
BOLLARDS:	--CONCRETE, PAINTED

DRC 2/10/2017



EXTERIOR MATERIAL LEGEND	
ITEM	MATERIAL
P-1	SMOOTH STUCCO PAINTED MUSLIN SW6133
P-2	SMOOTH STUCCO PAINTED FAVORITE TAN SW6157
P-3	STUCCO FORMED SIDING PAINTED RAINWASHED SW6211
P-4	SMOOTH STUCCO PAINTED WHITE FLOUR SW7102
P-5	HOLLOW METAL DOOR PAINTED WHITE FLOUR SW7102
P-6	ALUMINUM BI-FOLD DOOR PAINTED CRABBY APPLE SW7592
P-7	ALUMINUM COILING DOOR PAINTED WHITE FLOUR SW7102
P-8	ALUMINUM TRELLIS PAINTED WHITE FLOUR SW7102
P-9	ALUMINUM LOUVER PAINTED WHITE FLOUR SW7102
P-10	ALUMINUM FENCE PAINTED WHITE FLOUR SW7102
P-11	BLACK CAST ALUMINUM LETTERS

EXTERIOR FINISHES	
<b>WALLS:</b>	
EXTERIOR WALLS:	--3/4" SMOOTH STUCCO, PAINTED --1" STUCCO REVEALS --FORMED STUCCO SIDING, PAINTED --RAISED SMOOTH STUCCO WATER TABLE, PAINTED
WALL/RAKE TRIM:	--STUCCO TRIM, PAINTED --STUCCO BAND, PAINTED
<b>DOOR:</b>	
DOORS:	--IMPACT HOLLOW METAL DOOR --IMPACT HOLLOW METAL DOOR WITH IMPACT GLAZING --IMPACT ALUMINUM STOREFRONT DOOR WITH IMPACT GLAZING SIDELIGHT --IMPACT ALUMINUM OVERHEAD COILING DOOR --IMPACT ALUMINUM BIFOLD DOOR WITH IMPACT GLAZING
<b>ROOFING:</b>	
ROOF:	--STANDING SEAM METAL ROOF
SOFFIT:	--SMOOTH STUCCO, PAINTED
FLASHING/COPING:	--ALUMINUM, PAINTED
GUTTERS/ DOWNSPOUTS:	--ALUMINUM, PAINTED
<b>MISCELLANEOUS:</b>	
BRACKETS:	--ALUMINUM, PAINTED
SUN SHADES:	--ALUMINUM, PAINTED
TRELLIS:	--ALUMINUM, PAINTED
EXTERIOR LIGHTS:	--WALL MOUNTED CANOPY LIGHTING
FENCING:	--ALUMINUM, PAINTED
SIGNAGE:	--CAST ALUMINUM LETTERS, PAINTED --CAST STONE ORNAMENT
LOUVER:	--IMPACT ALUMINUM LOUVER, PAINTED
EYEBROW:	--CONCRETE, PAINTED
BOLLARDS:	--CONCRETE, PAINTED

DRC 2/10/2017

DRAWING NUMBER

**A3.02**