



# Facility Speaker Bios, Disclosures & CE Details

## Continuing Education/Continuing Medical Education (CE/CME) Activity

# Pharmacy Conference 2020

### Agenda

**October 29, 2020**

**9:00 a.m. –10:00 a.m.**

*“Introduction to Opioid Use Disorder and Medications”*

Lauren Walter, M.D.; Associate Professor, UAB

**Pharmacists, Pharmacy Techs, Physicians, PA, Nursing, Social Workers**

- Improve ability to recognize and diagnose OUD
- Recognize and treat opioid withdrawal
- Be aware of medication and treatment plans for OUD

**10:00 a.m. - 11:00 a.m.**

*“Quality Pain Care in Older Adults”*

Ella Bowman, M.D., PhD.

Associate Professor of Medicine; UAB Division of Gerontology, Geriatrics & Palliative Care

**Pharmacists, Pharmacy Techs, Physicians, PA, Nursing, Social Workers**

- Discuss the impact of pain in older adults
- Review the barriers to pain assessment and management in older adults
- Discuss the multifaceted nature of suffering when performing a comprehensive pain assessment
- Summarize both nonpharmacologic and pharmacologic treatment options
- Develop a multimodal pain treatment plan for patients with complex pain

**11:00 a.m. - 12:00 noon**

*“Update on Diabetes - Latest Treatment Drugs”*

W. Timothy Garvey, M.D.

Director, UAB Diabetes Research Center, UAB

**Pharmacists, Pharmacy Techs, Physicians, PA, Nursing, Social Workers**

- Implement ADA treatment guidelines and apply standards of care in daily practice
- Apply evidence based approaches to the selection of new and current medications for patients with diabetes
- Utilize interprofessional teams to manage diabetes

#### ACTIVITY SNAPSHOT

**Activity Type:**

Live Stream/Enduring

**Release Date:**

October 29, 2020

**Expiration Date:**

October 29, 2021

**Continuing Education Credits:**

3.0 CME/CE for **Physicians (ACCME)**

3.0 CME/CE for **Physician Assistants (AAPA)**

3.0 CPE for **Pharmacists (ACPE + NABP)**

5.0 CPE for **Pharmacy Techs (ACPE + NABP)**

3.0 CNE for **Nurses (ANCC)**

3.0 ASWB for **Social Workers (ASWB)**

**Estimated Duration:**

1 hour Per Activity Topic

**Content Last Reviewed:**

October 29, 2020

12:00 noon

Break - Next Session Will Start at 1:00 P.M. for Pharmacy Technicians

1:00 p.m. - 2:00 p.m..

*“Covid - 19 - The Role of the Pharmacy Technician”*

Bradley N. Nix, PharmD; Clinical Staff Pharmacist

### **Pharmacy Technicians**

- Provide a general introduction to Covid-19
- Describe methods of reducing spread of Covid-19
- Discuss the Pharmacy Technician’s Role with Covid-19

2:00 p.m. - 3:00 p.m..

*“Pharmacy Law Update”*

### **Pharmacy Technicians**

- Evaluate state board requirements for the Pharmacy Technician
- Compare requirements of Pharmacy Technician certification organizations
- Discuss continuing education criteria for the Pharmacy Technician

## **TARGET AUDIENCE**

This activity is designed for the interdisciplinary audience including physicians, nursing, pharmacy, PA & Social Worker

## **DISCLOSURE OF RELATIONSHIPS/CONTENT VALIDITY**

It is the policy of Ascension to adhere to Joint Accreditation Criteria, Policies, and Standards for Commercial Support and content validation in order to ensure fair balance, independence, objectivity, and scientific rigor in all its sponsored activities. All speakers, Course Directors, Co-Course Directors, planners, reviewers, and staff members participating in sponsored activities are expected to disclose relevant financial relationships pertaining to their contribution to the activity. Relationship information is analyzed to determine whether conflicts of interest exist. All conflicts of interest are resolved prior to participation in the planning or implementation of this activity. Presenters and authors are also expected to disclose any discussion of (1) off-label or investigational uses of FDA approved commercial products or devices or (2) products or devices not yet approved in the United States.

*Ascension CE/CME activities are intended to be evidence-based and free of commercial bias. If you have any concerns, please call the Ascension CE/CME Department at 205-838-3225 to anonymously express them.*

## **ACCREDITATION AND CREDIT DESIGNATION STATEMENTS**



JOINTLY ACCREDITED PROVIDER™  
INTERPROFESSIONAL CONTINUING EDUCATION

In support of improving patient care, Ascension/St. Vincent’s Health is jointly accredited by the Accreditation Council for Continuing Medical Education (ACCME), the Accreditation Council for Pharmacy Education (ACPE), and the American Nurses Credentialing Center (ANCC), to provide continuing education for the healthcare team.



This activity was planned by and for the healthcare team, and learners will receive 5.0 IPCE credits for learning and change.



### FOR PHYSICIANS:

The Ascension/St. Vincent's Health designates this Live Activity for a maximum of 3.0 credits *AMA PRA Category 1 Credit(s)*<sup>™</sup>. Physicians should claim only the credit commensurate with the extent of their participation in the activity.



### FOR NURSING:

This activity is awarded 3.0 contact hours. (based on 60 minutes per contact hour)



### FOR PHYSICIAN ASSISTANTS:

Ascension/St. Vincent's Health has been authorized by the American Academy of PAs (AAPA) to award AAPA Category 1 CME credit for activities planned in accordance with AAPA CME Criteria. This activity is designated for 3.0 AAPA Category 3 CME credits. PAs should only claim credit commensurate with the extent of their participation.



### FOR PHARMACY:

This knowledge-based activity qualifies for 5.0 contact hours of continuing pharmacy education credit. Pharmacy CE credits will be submitted electronically to the NABP upon successful completion of the activity.



### FOR SOCIAL WORKERS:

As a Jointly Accredited Organization, Ascension/St. Vincent's Health is approved to offer social work continuing education by the Association of Social Work Boards (ASWB) Approved Continuing Education (ACE) program. Organizations, not individual courses, are approved under this program. State and provincial regulatory boards have the final authority to determine whether an individual course may be accepted for continuing education credit. Ascension/St. Vincent's Health maintains responsibility for this course. Social workers completing this course receive 3.0 continuing education credits.

### Obtaining CE Credit:

1. Review the live/enduring activity
2. Complete the activity in its entirety
3. Complete the electronic activity evaluation
4. Certificate of completion will be sent 10 days after each activity viewed. CME, PA NP credits will receive a transcript; CE, Social Work, Allied Health credits will receive a CE certificate electronically to be downloaded to individual boards by the participant and ACPE Pharmacy CE credits will be submitted electronically to the NABP upon successful completion of the activity.

### Faculty/Course Director/Planners:

All Ascension planners and reviewers have no relevant financial relationships with ACCME defined commercial interest.

Ascension has selected all faculty participating in this activity. It is the policy of Ascension that all CME/CE planning committees, faculty, authors, editors, and staff disclose relationships with commercial interests upon nomination or invitation of participation. Disclosure documents are reviewed for potential conflicts of interest and if relevant, they are resolved prior to confirmation of participation. Only those participants who have no conflict of interest or who agreed to an identified resolution process prior to their participation were involved in this activity.

**Conflict of Interest:** In accordance with the ACCME Standards for Commercial Support, it is the policy of Ascension/St. Vincent's to ensure balance, independence, objectivity and scientific rigor in all CE/CME activities. Full disclosure of conflicts and conflict resolution will be made in writing via handout materials or syllabus.

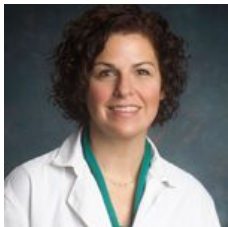
**COMMERCIAL SUPPORT:** No commercial interest was received for this CE/CME activity.

### **SPEAKERS:**

## **Lauren Walter, MD**

UAB, Associate Professor; Emergency Department

### **Bio:**



Lauren Walter MD, FACEP, FAAEM is an Assistant Professor and Core Educational Faculty for the Department of Emergency Medicine, University of Alabama School of Medicine, Birmingham, AL. She completed her undergraduate and medical school training at the University of Michigan in Ann Arbor. She completed her EM residency at the University of Alabama in Birmingham, serving as chief resident her senior year.

Dr. Walter is involved in the EM residency program as a member of the Program Evaluation and Clinical Competency Committees and as a residency faculty mentor. In addition, since 2011 Dr. Walter has also been involved in the UASOM Introduction to Clinical Medicine Program as a Faculty Preceptor, instructing first and second-year medical students in the art of 'History and Physical Exam' skills as well as patient write-ups and oral presentations.

### **Disclosures:**

**Faculty:** Lauren Walter, MD

\* Has no relevant financial relationships with ACCME-defined commercial interests

\* Will not be discussing the off-label or investigational use of products

*Course Chair reviewed and found no Conflict of Interest*

All Ascension planners and reviewers have no relevant financial relationships with ACCME-defined commercial interests.

## Ella Bowman, MD, PhD

UAB, Associate Professor of Medicine; UAB Division of Gerontology, Geriatrics, and Palliative Care

### Bio:



Physician leader and clinician educator with active board certification in Geriatric Medicine and Hospice & Palliative Medicine. Specific interests include geriatric medical education, interprofessional teams building, inpatient care of the elderly with specific focus on complex symptom management and unmet palliative needs, and developing geriatric medicine consultation programs.

### Disclosures:

**Faculty:** Ella Bowman, MD, PhD

- \* Has no relevant financial relationships with ACCME-defined commercial interests
- \* Will not be discussing the off-label or investigational use of products

*Course Chair reviewed and found no Conflict of Interest*

All Ascension planners and reviewers have no relevant financial relationships with ACCME-defined commercial interests.

## W. Timothy Garvey, MD

UAB, Director, UAB Diabetes Research Center

### Bio:



W. Timothy Garvey is an American endocrinologist and Butterworth Professor of Medicine in the department of Nutrition Sciences at the University of Alabama School of Medicine. He is known for his work on diabetes and is director of the medical school's Diabetes Research Center.

### Disclosures:

**Faculty:** W. Timothy Garvey, MD

- \* Has no relevant financial relationships with ACCME-defined commercial interests
- \* Will not be discussing the off-label or investigational use of products

*Course Chair reviewed and found no Conflict of Interest*

All Ascension planners and reviewers have no relevant financial relationships with ACCME-defined commercial interests.

# Bradley N. Nix, PharmD

Clinical Staff Pharmacist; Ascension Alabama

## Bio:



Bradley N. Nix, PharmD is a Clinical Staff Pharmacist at St. Vincent's East in Birmingham, AL. He began his pharmacy career in 1988 as a U.S. Navy Pharmacy Technician. After his military service, he continued as a Certified Pharmacy Technician in hospital settings, including St. Vincent's East. He graduated from Samford University McWhorter School of Pharmacy in 2002. He has worked in various community and hospital settings with duties ranging from Staff Pharmacist to Director of Pharmacy. His current pharmacy interests include antimicrobial stewardship, compounding practices, and expansion of pharmacy services in regard to education, training and competency.

## Disclosures:

**Faculty:** Bradley N. Nix, PharmD

- \* Has no relevant financial relationships with ACCME-defined commercial interests
- \* Will not be discussing the off-label or investigational use of products

*Course Chair reviewed and found no Conflict of Interest*

All Ascension planners and reviewers have no relevant financial relationships with ACCME-defined commercial interests.