

Mouse Anti-pS2 Estrogen Inducible Protein [GE2]: MC0242, MC0242RTU7

Intended Use: For Research Use Only

Description: This antibody specifically recognizes 6.5 kD human pS2 Estrogen-Regulated Protein. pS2 is specifically expressed and secreted by ER-mucosa cells of the normal stomach (antrum and body) of both female and male individuals. Primary breast tumors have been shown to express pS2 in ER+ primary breast tumors.

Specifications

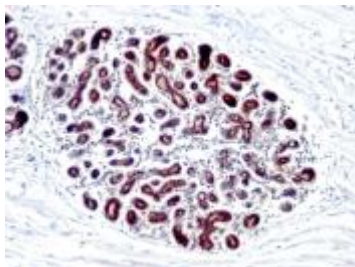
Clone: GE2 same as R47/94
Source: Mouse
Isotype: IgG1k
Reactivity: Human
Localization: Cytoplasm
Formulation: Antibody in PBS pH7.4, containing BSA and $\leq 0.09\%$ sodium azide (NaN₃)
Storage: Store at 2°- 8°C
Applications: IHC
Package:

Description	Catalog No.	Size
pS2 Estrogen Inducible Protein Concentrated	MC0242	1 ml
pS2 Estrogen Inducible Protein Prediluted	MC0242RTU7	7 ml

IHC Procedure*

Positive Control Tissue: Breast cancer
Concentrated Dilution: 50-200
Pretreatment: Citrate pH6.0, 15 minutes using Pressure Cooker, or 30-60 minutes using water bath at 95°-99°C
Incubation Time and Temp: 30-60 minutes @ RT
Detection: Refer to the detection system manual

* Result should be confirmed by an established diagnostic procedure.



FFPE human breast carcinoma stained with anti-pS2 using DAB

References:

Methyltransferase-like 17 physically and functionally interacts with estrogen receptors. Du P, et al. IUBMB Life 67:861-8, 2015.
Morphological subclassification of intrahepatic cholangiocarcinoma: etiological, clinicopathological, and molecular features. Liao JY, et al. Mod Pathol N/A:N/A, 2014.
Differential expression of mucosal trefoil factors and mucins in pediatric inflammatory bowel diseases. Hensel KO, et al. Sci Rep 4:7343, 2014.
Let-7: a regulator of the ER α signaling pathway in human breast tumors and breast cancer stem cells. Sun X, et al. Oncol Rep 29:2079-87, 2013.

Doc. 100-MC0242
Rev. A