

**Rabbit Anti-Filaggrin [MD156R]: RM0056, RM0056RTU7**

**Intended Use:** For Research Use Only

**Description:** Filaggrin is an intermediate filament-associated protein that aggregates keratin intermediate filaments in mammalian epidermis. It is initially synthesized as a polyprotein precursor, profilaggrin (consisting of multiple filaggrin units of 324 aa each), which is localized in keratohyalin granules, and is subsequently proteolytically processed into individual functional filaggrin molecules. Active filaggrin is present at a level of the epidermis where keratinocytes are in transition between the live nucleated granular layer and the anucleate cornified layer, suggesting that filaggrin aids in the terminal differentiation process by facilitating apoptotic machinery.

**Specifications**

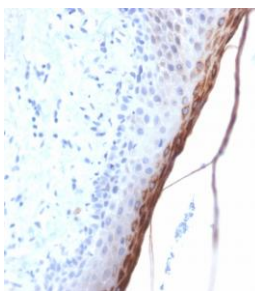
Clone: MD156R  
 Source: Rabbit  
 Isotype: IgG  
 Reactivity: Human  
 Immunogen: Recombinant human Filaggrin protein fragment aa 198-288  
 Localization: Mitochondrion, nucleus membrane  
 Formulation: Antibody in PBS pH7.4, containing BSA and  $\leq 0.09\%$  sodium azide (NaN<sub>3</sub>)  
 Storage: Store at 2°- 8°C  
 Applications: IHC  
 Package:

Description	Catalog No.	Size
Filaggrin Concentrated	RM0056	1 ml
Filaggrin Prediluted	RM0056RTU7	7 ml

**IHC Procedure\***

Positive Control Tissue: Skin  
 Concentrated Dilution: 50-200  
 Pretreatment: Tris EDTA pH9.0, 15 minutes using Pressure Cooker, or 30-60 minutes using water bath at 95°-99°C  
 Incubation Time and Temp: Overnight @ 4°C  
 Detection: Refer to the detection system manual

\* Result should be confirmed by an established diagnostic procedure.



FFPE human skin stained with anti-Filaggrin using DAB

**References:**

1. Filaggrin expression via immunohistochemistry in basal cell carcinoma and squamous cell carcinoma. Kaitlin Vanderbeck, et al., J Cutan Pathol. Feb 4, 2021.
2. Immunohistochemical evaluation of filaggrin polyclonal antibody in atopic and normal beagles. Rosanna Marsella, et al., Vet Dermatol. Oct;20(5-6):547-54, 2009.