

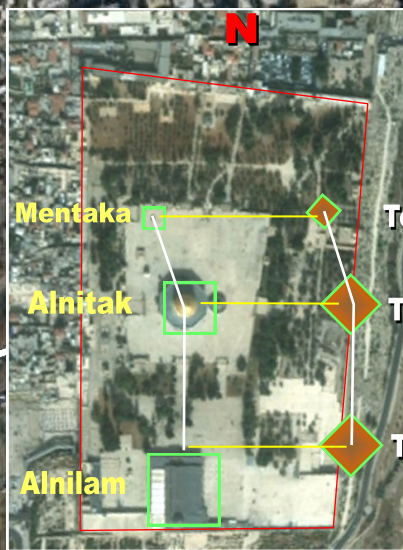
ORION MAN OF COLUMBIA

The purpose of this illustration is to show that not only is the 'Masonic Man' and the *Temple Man* a viable outline portrayed but this form is that of *Orion* also. If the Luciferians have such a layered motif that incorporates the 'Masonic Man' template based on an anthropomorphic Solomon's Temple male form, then surely the extended cryptic layer will also correspond to that of the celestial realm. This is the case as one can also superimpose the constellation lay-lines of the constellation of Orion. This study strongly suggests that the *White House*, the *Washington Monument* and the *Jefferson Memorial* construe the very belt stars of *Orion* as does the plaza at the Vatican. This would be one of the explanation as to why the *Washington Monument* is not placed in perfect alignment with the other 2 structures; such are the 3 stars of *Orion* that are also offset.

LUCIFERIAN ANTHROPOMORPHIC COUNTERFEIT 'CHRIST'

The *White House* corresponds to the 'White' Temple of YHVH and the *Orion* star of *Mintaka*. The *Dome of the Rock* corresponds to the *Washington Monument* and the *Orion* star of *Alnilam*. The *Jefferson Memorial* corresponds to the *al-Aqsa mosque* and the *Orion* star of *Alnitak*. With such precision, it is amazing that the lay-lines of the outline of *Orion* also match the bridges that span the *Potomac River*.

TEMPLE MOUNT
The City of the KING
THE LION OF THE TRIBE OF JUDAH



ORION-GIZA PATTERN

© Composition & Some Graphics by
LUIS B. VEGA
vegapost@hotmail.com
FOR ILLUSTRATION PURPOSES ONLY

MAIN SOURCES
GoogleEarth.com
TempleSecrets.info
Wikipedia.com

The structures represent largely the main religions of the world, Judaism, Christianity and Islam. Thus, also the buildings do correspond with this template. The 'Sun, Moon and the Stars' axiom corresponds to the 'holy books'. The 'White' Temple is that of the Jews, the gold *Dome of the Rock* is that of the Muslims and the Moon silver color of the *al-Aqsa mosque* previously was a Templar Church.

Stars
1st & 2nd
Temple
הר הבית



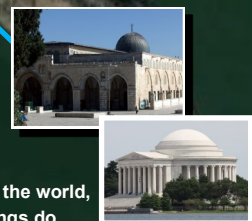
Mentaka
THE WHITE HOUSE
WHITE

Sun
قبة الصخرة



Alnilam
WASHINGTON MONUMENT
'Phallus'
GOLD

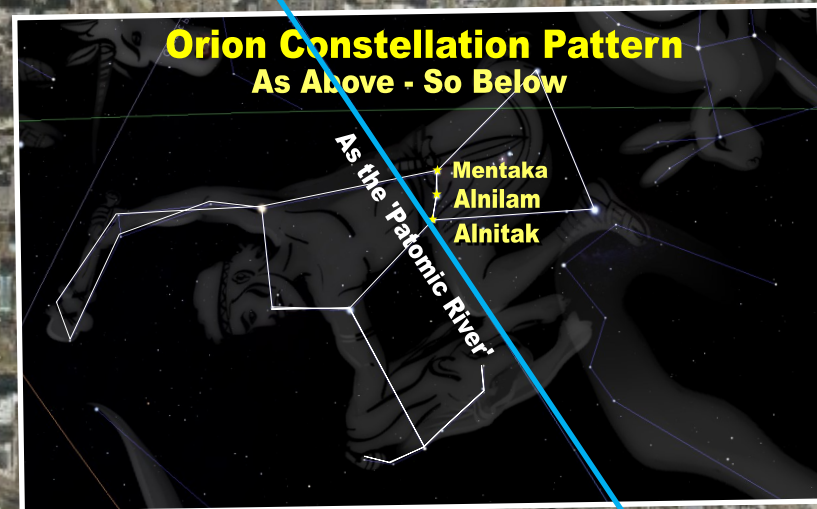
Moon
المسجد الاقصى



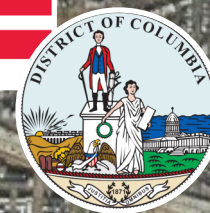
Alnitak
JEFFERSON MEMORIAL
SILVER

ORION-GIZA PATTERN

As the 'Galactic Equator'



With this grandiose supposition, the *Orion* template can be superimposed with a double layer of the *Great Pyramids of Giza* that replicated the *Belt of Orion* but more so approximate *Temple Mount* depictions of the 3 main religious structures. The *Temple Mount* square serves as the 'Altar' that the 3 main books of the Masons in their Synagogues of Satan lodges have placed there. These are the Torah, the Bible and the Koran.



The *Orion* template is a depiction of the macro and micro symmetry and mirrored compositions of such sacred layouts in relation to Heaven and Earth themselves. Meaning that the Luciferian axiom of *As Above, So Below* is incorporated in these Luciferian and Columbian lay-lines.

Google Earth