



Volume 89

November 2017

9030 Forestview Lane N. Maple Grove, MN 55369 425-2279 Open 2nd Sunday of the month 1-4 pm

Maple Grove Historical Preservation Society

Officers

President: Al Madsen
Vice President: Caroline Schaefer
Secretary: Joyce Deane
Treasurer: Patty Reuter
Newsletter Editor: Pat Ruffing
Web page designer: Steve Briggs

Sunday- Then and Now?

What was your Grandma's Sunday like? Did she spend most of Saturday, peeling the apples and baking a pie? Did the kitchen floor have to be scrubbed; wrinkles ironed out of the starched cotton clothes; and creases pressed into Grandpa suit pants? Who shined the family shoes? Was Grandpa out polishing the car to make a proper appearance at Church? The family must be ready to celebrate the "Lord's Day" - a day of worship and a day of rest. Was the jello setting in the icebox as relatives might be invited over for Sunday dinner; or maybe the family would take a drive in the Countryside, to see what the neighbors were doing; or attend a town baseball game instead.

Most families felt worshipping God was a priority. Grandpa wore a suit and tie to church, boys also wore suits to church – even in hot summer weather. Grandma wore her best dress, hat, possibly gloves and carried her purse and prayer book. Girls wore their patent leather shoes and a dress.

Grandma, and Grandpa, the coffee might smell the same in the Church basement– oops-is it Starbucks? But would you recognize the way your Grandchildren celebrate "the Lord's Day" now ?

R 500th Anniversary

Reformation Day is a Protestant religious holiday celebrated on October 31, alongside All Hallows' Eve (Halloween) during the triduum of Allhallowtide, in remembrance of the onset of the Reformation. Traditionally, 31 October 1517 is widely held to be the day German monk Martin Luther nailed his Ninety-five Theses on the door of the All Saints' Church in Wittenberg. Luther may have chosen All Hallows' Eve on purpose to get the attention of common people.

The holiday is a significant one for both Lutheran and Calvinist churches, although other Protestant communities also tend to commemorate this day.

In 2017, 31 October will be a lawful holiday in all of Germany. In order to do this, German states which do not celebrate the Reformation Day annually have passed adequate legislation or made regulations. In the United States, the Evangelical Lutheran Church in America will be hosting an event to commemorate the Reformation in Washington, D.C.

A hymn by Luther, "Ein feste Burg ist unser Gott" ("A mighty fortress is our God"), originally a paraphrase of Psalm 46, became a song associated with the feast day. . From Wikipedia

Christmas Party

December 14th
Bring your spouse
or a favorite
friend
and a dish to share

6 p.m.



Luther Rose



By Caroline Shaefer

Luther's Rose (Martin Luther's Seal) is a Symbol of the Lutheran Reformation.

Black Cross– As a symbol of the darkness of sin.

A Red Heart– The black cross inside the giving of life through faith

A White Rose– This faith gives joy, comfort and peace

A blue Field– To symbolize joy and faith of the heavenly future joy

The Gold Ring– Blessedness in heaven lasts forever.

Martin Luther was a very talented man who did a lot of writing and composing of hymns. He translated the Bible into German. (the language of the people in Germany.) Some of his famous writings: The Small Catechism and The Large Catechism .

Famous Hymns: " A Mighty Fortress is Our God" and From Heaven Above".

Lutheranism came to the Maple Grove area with the early settlers in the 1850's. It was several years before some of the congregations were established. The following are congregations in the area today:

St John's (LCMS) 1864 {Corcoran Maple Grove border}

St. Paul's (LCMS 1867. {Osseo}

Advent (ELCS) 1966

Shepherd of the Grove (LCMS) 1974

Lord of Life (ELCA) 1978

Maple Grove Lutheran (ELCA) early 1980's

Redeemer (Wels) 1991

Grace Free Lutheran (AFLC) 2001



Remembering Christmas as a Child

Child

By Caroline Shaefer

I remember the Christmas Eve services when the church was filled with worshippers for

the Children's Program. Some of the pews were turned sideways so the children could be heard better(there were no microphones). They had their recitations and the singing of the Christmas hymns– all telling the story of Jesus's birth.

The Church was adorned with four evergreen trees. Two were very large trees (15 ft. or more) stood below the steps in the corner. They had multi-colored lights and ornaments. Two smaller trees stood one on each side of the altar with blue lights and tinsel. O what a beautiful sight!

After the service each child in attendance received a gift of goodies-salted in the shell peanuts, some mixed nuts, hard candy, ribbon candy, an apple or orange and a pencil.

St. John's Lutheran Church



9141 Coun-
Corcoran,

ty Road 101
MN 55340

At a Convention of Missouri-Synod in 1856 the decision was made to "commission a man of God to explore Minnesota," as no Missouri-Synod evangelist had yet to bring pure doctrine to the region, to the German Lutherans , and to do disciple-making among the many Chippewa in Minnesota .

Herman Schutte donated the 10 acres of land for the Church on June 15th, 1864. St John's was founded in April 18, 1864. All the buildings since have stood in the same spot since then. The school has been part of the church since the first days.

The first church stood here from 1866-1880. Services were conducted in German until 1917, the 400th anniversary of the Reformation, then services began in English.



A second Church was built 1881. Pledges to build the church totaled \$1765.25. A debt of \$320 remained. Some of the members worried that the building looked more like a Catholic Church with a cross on the steeple!

In 1927, it burned. Henry Schutte was on the phone, party line, 11 am on Dec 15, 1927, when the fires warning sounded 5 times– the emergency was the fire at the church, a half a mile north. Leonard Radinz was on horseback heading to the church to dig a grave, he came over the hill on 101st and saw the steeple– on fire. Apparent cause of fire a new more combustibile coal.

The third church was built of brick and mortar in 1928.

Recent renovations and additions have changed It to what you see today.



From St John's website s and 150 anniversary book



**150 years
2017**

**710 Broadway E
Osseo, Minnesota**

St. Paul's Lutheran Church -

St. Paul's Lutheran Church began in 1865 as The Evangelical Church of Osseo with 12 members gathered by St. John's Lutheran, Corcoran, MN . In the early years the founding Pastors held services in family homes. Then they built a small frame church, and then a bigger church .

1867- Church adopted its Constitution.

1890- They become a member of the Missouri Synod.

1915- A brick and stucco church was built at the corner of E. Broadway and 1st Ave NE in Osseo.

1919- A parsonage was built just east of the Church.

1927- Sunday School began.

1936-1940 They had a Christian Day School.

1936-1949 St. Paul had a mission in Anoka-Mt Olive Lutheran.

1958-Ground breaking for a stone church and a brick parsonage to be built at the corner of E. Broadway and 7th Ave S.E. The cost around \$325,000 dollars. The Church seats 450 and is on 12 acres of land.

1960- The Church land, which was a part of Brooklyn Park ,was annexed by Osseo.

1980s- Parsonage was converted to Sunday school classrooms.

2009 -Rededicated the present sanctuary.

2017- 150 years! Information from St. Paul's website

**What did you do for fun in winter?
Please send in your stories of your winter outdoor sports memories for the January 2018 newsletter**



A Christmas Story

Have you ever seen a Christmas tree lit with burning candles? It is truly a sight of wonder and awe. When I was a kid, back in the 40's, we did have electric lights on our tree. But, my uncle and aunt, Gilbert and Ella Koehler, did not. Each year their small tree was trimmed with the old candle holders and real candles. No, they never lit them. Except for once.

I must have been about eight years old. Everyone else was down in the barn milking. Aunt Ella decided I should have the experience of seeing a Christmas tree lit with burning candles. The first step was to get a big bucket of water to set in the parlor near the tree just in case it was needed. Then, the candles were carefully lit after making sure each one was positioned in a "safe" location.

The room was dark. The six or eight candles glowed. It was beautiful! After a few minutes, the candles were extinguished. The bucket of water had not been needed. It was a very special moment in time I'll not forget.

Yes, a lit Christmas tree can be dangerous ... as Aunt Ella well knew. That makes the mystery all the more mysterious.

When she was a child in the early 1900's candles on Christmas trees were the norm. No one had electricity.

Each Christmas Eve the family bundled into the sleigh to go to the Christmas Eve service at St. John's Lutheran Church. Everyone in the neighborhood did. Would Santa Claus come while they were gone as he had done in the years before?

And, sure enough! When they drove into the yard after the service they could see, through the windows, the candles all burning on the Christmas tree! Santa had been there while they were at church. And, yes, there were presents under the tree.

But, how could this happen? Aunt Ella does remember that just as everyone got settled in the sleigh, her mother, Sophie Schmidt, would "forget something" and have to return to the house for a few minutes. No doubt it was during this time that she moved the presents from the front closet to under the tree. But, what about the burning candles on the tree. They certainly couldn't have burned all the while they were at church. The service lasted far too long for that. Had someone come in to light them just before the family arrived home? There was no one else in the house! And, when Ella grew older ... and more suspicious, she checked the snow at the usually unused doors for footprints. There were none. Who had lit the candles? She NEVER knew!

Emily Koehler 2001

Emily Koehler

How the Lutherans settled in Maple Grove.

1. The first Maple Grove residents were Winnebago Indians, who were moved from Wisconsin to Maple Grove by the Federal Government because "no one lived there." Early native Americans spiritual beliefs in the "Great Spirit" formed the fabric of their lives. Then came the white man, some religious and some not.

2. The French Canadian fur traders and explorers, mostly Catholic, came first. In 1851, Louis Gervais and Pierre Bottineau arrived and staked their claims.

3. In the 19th Century, many settlers from New England and immigrants from Germany, Ireland, Norway and Sweden came because of inexpensive farmland and the Hennepin County industries. This immigration peaked in about 1910. Each ethnic group brought their national religious beliefs and traditions.

4. "The Territorial Legislature of Minnesota established Hennepin County on March 6, 1852, The original plan was to call it Snelling County, but the final choice was designed to honor Father Hennepin."

5. "By 1860, the population of Hennepin County surpassed 12,000." Water power built Minneapolis and Hennepin County. The water from the rivers provided power to grist and saw mills. Minneapolis industries produced lumber, furniture, farm implements and clothing. Farms throughout the county produced vegetables, fruits, grains and dairy products.

6. By 1883, railroads united Minneapolis with both the East and West coasts, and technical developments, especially in flour milling, brought rapid progress.

7. After 1910, large numbers of immigrants continued to arrive from southern and eastern Europe.

8. The population of Minneapolis grew until shortly after World War II. The people moved outward from Minneapolis, with the addition of new neighborhoods into the agricultural lands to the west.

9. The automobile accelerated the growth of the suburbs. Another wave of immigration – after the Vietnam War in the mid-1970s – marked a major change in the ethnic makeup of the county's immigrant populations. . . often aided by local churches." Hennepin County website

The Lutheran Augustana Synod was largest Swedish American organization. Membership in the Swedish American religious denominations were about 365,000 at the end of the immigration era. 1/4 of the Swedish Americans of the 1st and 2nd generations were Swedish American church members. Swedish Immigration to the U.S.A -MNHS

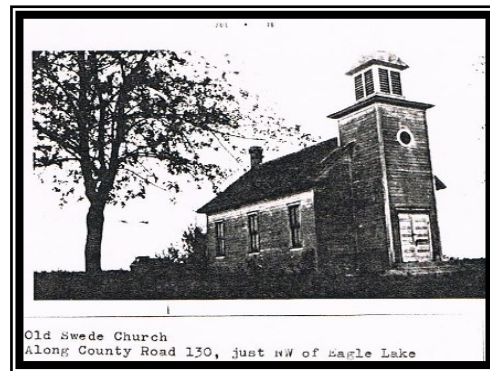
Svenska Lutheranska Kyrkan av Örnsjö

The Swedish Lutheran Church by Eagle Lake was the Church my grand-

parents Oscar and Ida Sollberg attended, as did my dad, Reuben Sollberg (born in 1905) and his two siblings. The service was in Swedish. The men sat on one side of the Church and the women on the other side. At Christmas, there would be a real Christmas tree with lit candles and pails of water in case the tree caught on fire!

Dad was not confirmed at the Eagle Lake Church, as the church burned down. He and his cousins went by horse and buggy to Salem Lutheran Church in North Minneapolis where they were confirmed. All that remained of the Church was the 3 cement steps of the Church that faced east, and one (many-times-painted) wooden chair that I have. How did my grandmother save that wooden chair from the fire? Jeanne Sollberg Redington

(The Sollbergs lived on Deerwood Lane and owned the property that the Maple Grove Middle School is on today (The Church was located on Irwin Wenz Hill on the West side of the City RD 130 the road curving around Eagle Lake today.)



Childhood memories of "Release Time from School for Religious Instruction"

As a child growing up in rural Minnesota in 1950's and attending public school in "town", Monday afternoon remains a vivid memory walking to church with classmates to attend religious instruction. The kids who didn't attend, remained at the public school. I remember kids going to the Lutheran, Presbyterian, Catholic and Nazarene Churches. The Presbyterians had it easy; their church was across the street from the school.

It still amazes me that the Minnesota State Statutes reads in part: "A child may be excused from attendance part of the time a public school is in session if he participates in a Released Time program. The parents of the child must request permission from the local school board" three hours in any week." The school for religious instruction, ... must be conducted ... in a place other than a public school building, and it may not be publicly funded. [MINN. STAT. § 120A.22, Subd. 12"](#)

In these same years, kids thought it was sacrilegious to set foot on the church property of another denomination. Somehow there was a feeling that you were endorsing false religions. There was one exception that I remember. It was when a Lutefisk and Lefse Dinner being served in the Lutheran Church basement! Pat Ruffing

Lord of Life has had an exciting in Maple Grove!



County Roads 101 and 10.

1978-Lord of Life began as a mission congregation. The first worship service was held at Cedar Island Elementary School. Pastor Paul Hammarberg, was the mission developer; there were 412 members.

1982- Lord of Life moved into the location at 6900 West Fish Lake Road.



1996- Lord of Life began using Rush Creek Elementary School at the corner of Highway 101 and 89th Avenue as a worship and Church School site.

1998- the congregation purchased 31 acres of land at the intersection of County Roads 101 and 10. The present church was completed in 2001.

2003-The lighted cross tower was completed .

2008– The Columbaria and Memorial Peace Garden were completed at the base of the tower.

2012 -expansion of Fellowship Hall, Youth Room and administrative offices, and the addition of a prayer chapel, informal gathering spaces, eight additional large classrooms, service center and Samaritan Hall

20 years- the congregation has expanded at an incredible rate. Lord of Life's membership is in the top 1/2 of 1% of all ELCA congregations in the United States. [LOL website](#)

Missouri Synod , with 2.1 million members, it is both the eighth-largest Protestant denomination and the second-largest Lutheran body in the U.S., the largest being Evangelical Lutheran Church in America.

Advent Lutheran Church



9475 Jefferson Hwy., Maple Grove, MN 55369

According to the Maple Grove Osseo Press article Jan 5, 2017...A mortician Jerry Anderson, in central (Alexandria) Minnesota , and along with his wife Ann and 2 kids, decided to become a missionary at the crossroads of Osseo, Maple Grove, Brooklyn Park and Champlin. In February of 1966 he knocked on about 1600 doors, and by Sept 1966 , 160 people joined him to worship in Osseo Elementary Gym., Advent Lutheran Church was founded in 1966.

Two months later—became an official congregation— Bought 8 acres of land for \$60,000 north of Osseo and Christmas Eve 1967 the building had the 1st worship service.

He picked out Advent because it means beginning. He told the Osseo Press he liked to have a word starting with the first letter of the alphabet—it would be easier to advertise.

Advent Lutheran is a member of the ELCA and has a growing congregation of about 1600 active members . The Church website has a wonderful video of the 50th anniversary.

Shepherd of the Grove



Logo used by the LCMS since 2012



11875 West Eagle Lake Drive
Maple Grove, MN 55369

The Missouri Synod, is a traditional, confessional Lutheran denomination in the United States. Confessional Lutheranism is a name used by Lutherans to designate those who accept the doctrines taught in the *Book of Concord* of 1580 (the Lutheran confessional documents) in their entirety because they are completely faithful to the teachings of the Bible.

Grace Free Lutheran,



15655 Bass Lake Road Maple Grove, MN

Formerly Medicine Lake Lutheran Church, moved with Heritage Christian Academy, formerly Medicine Lake Lutheran Academy, to Maple Grove in 2001.

The AFLC is a fellowship of independent congregations, who are interdependent to accomplish service in the Kingdom of God that cannot best be done alone. The Association of Free Lutheran Congregations (AFLC) was organized in 1962 by 40-50 congregations of the former Lutheran Free Church (LFC), and has grown over 270 member congregations.

The history of the AFLC starts with Scandinavians emigrating to the United States in the 19th Century. They loved education and wanted their faith and useful skills imparted to their children". Augsburg College in Minneapolis is one of the universities and seminaries founded. Two Norwegian scholars Geo Sverdrup and Sven Oftedal came to Augsburg to teach in the 1870's. They brought a radical view of Christian education, centered on Scripture and the simple doctrines of Christianity. Through their study of Scripture, they had come to a stunning conclusion: "the local congregation is the right form of God's kingdom on earth, and no power but God's Word and Spirit may dictate to it." This conviction was not only a matter of church government, but a vision of living Christianity. The church they sought to plant in the New World would promote a living Lutheran orthodoxy, served by shepherds who lead rather than overlords who dominate, emphasizing an evangelism that would result in changed lives and encourage lay people to exercise their spiritual gifts.

In 1890 several groups merged to form the United Norwegian Lutheran Church in America. In 1896 twelve congregations were expelled from the merged church, for their support of Augsburg, which had been determined in court to be a private corporation not subject to control by the new church body. In 1897 a group of like-minded congregations committed to Augsburg's principles established the LUTHERAN FREE CHURCH. From AFLC website

Redeemer Lutheran

9200 Elm Creek Blvd.
Maple Grove, MN
55369



Historical Timeline of Redeemer Lutheran Church,

May 1988 - Exploratory work for a new WELS church in the Maple Grove area begins.

October 1989 - First Worship service is conducted by Pastor Leon Piepenbrink at Osseo Jr. High School.

January 1991 - Redeemer Lutheran Church receives mission status as a congregation.

May 1994 - Groundbreaking for the new church begins on a seven-acre property on Elm Creek Blvd.

Fall 1994 - Construction begins with the help of WELS Builders for Christ.

May 1995 - Dedication of new church building.

November 1998 - Pastor Leon Piepenbrink accepts call to serve full time in the Hmong ministerial training program.

May 1999 - Pastor Duane Schmeichel accepts call to serve Redeemer Lutheran Church.

Spring 2005 - Initial designs begin for a major expansion of the church building.

September 2005 - Shining Light Preschool opens for the first time.

February 2012 - The mortgage on the original building is paid in full.

May 2014 - The long awaited \$1million building expansion begins. The new 7,000 sq. ft. addition contains a new sanctuary, preschool classroom, narthex, and offices.

December 2014 - To the glory of God, the first worship service in the new sanctuary is led by Pastor Schmeichel.

January 2016 - A year long celebration of the church's 25th anniversary begins. Timeline from Redeemer Web page

Maple Grove Lutheran Church

9251 Elm Creek Blvd. N
Maple Grove
An Evangelical Lutheran
Church in America.



THE POT - ERUPTS, EXPLODES, & THEN ...

paints the ceiling

To some this incident is etched in their brain, to others only a myth. Either/or I'm thinking this memory may bring a smile to your face.



A five gallon steel pail similar to the exploding pot, handle and all, that we used during the nights while we lived in Hamel.

YES!! It exploded!!! One does not have to have passed a physics class with an A or even taken the class to know that a frozen liquid filled pot will not take kindly to being heated over an open stove with no air allowed in or out to ease the pressure. Unfortunately none of us were physicists and the inevitable happened. Here goes the story from my memory

anyway.

The family owned a 5 gallon bucket that was used for indoor toileting during the winter months and at night during all seasons of the year. After all who would choose to get up in the middle of the night, put on some outside clothes, dig around in the dark (Mom always turned down and blew out the kerosene lamp for the night) for a pair of shoes, anyone's shoes, stumble down the dark stairs then go out through the kitchen, then through the Summer kitchen, Open and close the outside door and then walk about 200 feet in the dark to the outhouse? You're right!!! Not me either.

So instead one was allowed the luxury of using the pot. The pot at that time was a 5 gallon black pail with a handle for lifting. If my memory serves me well it was Bill and Howards job to daily carry the pot down to the outhouse and dump it down into one of the holes inside. They never missed doing this chore until one day, in middle of winter, they were in a hurry to get to school so the pot was carried only as far as the Summer kitchen, no heat there, and left for dumping later. YUP!! The pot's contents froze SOLID!!!

Now, What to do? Well while Mom was busy trying to figure it out, Dad looked at the big old kitchen cook

stove still hot from making breakfast. Sure enough there was a small fire still burning inside. Dad threw in more wood, lifted the pot up and put it over the open burner area to thaw. WELL!! remember the above mentioned physics information? Yup!!! and you probably guessed it by now. The heat built up in the pot and with nowhere to go that old pots contents blew, turned into a geyser and exploded all over the kitchen's white wooden ceiling and did it smell? Oh did it ever.

Now while everyone else stood with their mouths agape Mom, ever the problem solver, told Dad to grab the big old kitchen table and to push it under the worst part of the sludge now dripping from the ceiling. Dad went into action, slid the table under the worst section of the ceiling, Mom grabbed all her clean towels and while dad wiped down that smelly dripping ceiling Mom was busy handing him towels and retrieving them from him when they were too wet to continue using. Where did she toss those towels? Well into the now empty pot/pail now sitting on the floor of course. Maybe a half hour went by, most of the ceiling had been cleaned and the smell had shrunk to almost none at all.

It was just at this very moment that there was a loud knocking heard at the front door. Everyone stared at each other. Mom looked at Dad, Dad looked at Mom. Dad was on the table wiping the last remaining stains off the ceiling, Mom was standing near the pot/pail with a dirty dripping towel in her hand. Once more the knocking was heard. This time even louder than the first time. Mom said "Sharon, Go see who is there".

OH NO!!! It was the farm house's owner. "Hello Sharon" he said. "Hello sir". "Is your mother Home Sharon?" "Yes sir, she's in the kitchen"

He walked into the kitchen saw dad on the table with one hand furiously trying to remove an unidentifiable chunk of an unknown substance from the ceiling and Mom with her hands in a bucket of towels.

Why Mrs. Hopkins he said. "You didn't have to scrub the ceiling!!!. .

Yes, ACTUALLY she Did :-) ...Sharon Hopkins

A letter from Jim Sable

In the August 2017 issue of the MGHPS newsletter there was a request for readers to send in stories about growing up Lutheran or knowing a Lutheran. That's one of the things I like best about the newsletter. The way it jogs your memory and brings back wonderful memories.

I was lucky enough to have a friend in North Minneapolis that had relatives living on a farm in Osseo. Rural Route 2 Osseo to be precise. Today it is 92nd and Lawndale, Maple Grove. From the time Bruce Hansen and I were kids in the very late 1940's and early to mid-1950's we would head out to the farm as soon as school let out for the summer.

Some of our fondest memories are of baling hay, combining oats, baling straw and visiting Willy Bredenberg's store to "talk schmart" with Herbie Bredenberg, Henry Granbart and Gilbert and Bill Koehler. What wonderful summers were spent "on the farm".

This is where the Lutheran story comes in. Everyone I knew at that time attended St. John's Lutheran Church. Fred Photenauer was the Pastor at the time. I was (and still am) Catholic. Emily's mom and dad saw to it that my religious needs were met. They lined up a ride for me with Ivo Schlagel and Ivo and I would go to St. Walburga's in Fletcher Sunday mornings.

On Friday morning Emily's (Koehler) mom made a nice breakfast of eggs, pancakes and sausage. I help myself to an egg and pancakes and Emily's dad (Bill Koehler) looked at my plate and asked " aren't you going to take any sausage". I explained I didn't eat meat on Friday. Bill said, " That isn't meat. We made it especially for you. It's sausage. "You don't call sawdust wood do you?"

That was about 65 years ago and every time I look at sausage I'm reminded of that funny, funny story. How we all laughed over that!

Display at Government Center - Irons Through the Years



From
the
Osseo
Review
1906
News
paper



MAPLE GROVE HISTORICAL
PRESERVATION SOCIETY
P.O. Box 1180
Maple Grove, MN 55311

MEMBERSHIP FORM (Renewable each January)

Annual Membership: (tax deductible)
\$15 Individual/Senior
\$30 Family
\$100 Supporting Member

I am interested in helping with:
 Writing articles
 Historic site maintenance
 Displays
 Educational Programs
 Publicity
 Cataloging artifacts
 Calling

Name: _____
(Please Print)

Address _____

Telephone: _____

E-mail: _____