



Since 1948 Exploring the Wonderful World of Beekeeping Together

The Bee Buzzer

Monthly Publication of the

Northeastern Kansas Beekeepers' Association

VOLUME 76, NUMBER 12

EDITOR: TIM MARSHALL

December 2024

General Meeting

Monday, December 16th, 2024 (7:00 p.m.)

Douglas County Fairgrounds Bldg. 21N

2110 Harper St., Lawrence KS

Main Program: Ask The Experienced - Bring your burning beekeeping questions (any topic) and our panel of experienced beekeepers will attempt to answer your questions.

Annual Cookie/Treat Exchange: Members are asked to bring 12 or more cookies (or another treat) each. If they are made with honey, please bring a recipe and it may be published in the Buzzer. Then for as many cookies as you bring you may take that many cookies home with you. Plates and plastic bags will be provided for you to take your goodies home. Extra cookies will be eaten by membership in attendance, so please bring some extras to share. Beverages will be served.

Christmas Outfit - Wear your best (or worst) Holiday themed sweater or outfit. Prizes for Best outfit and Ugliest!

Beelines

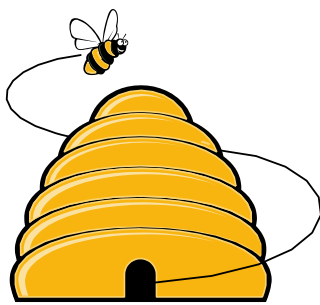
By President Cheryl Burkhead

Elections were held at our November meeting. Jon Chitwood was elected as our Youth Scholarship Chairperson. Elaine Ellenz, Buck Bradley, and Kristi Sanderson were re-elected to serve a second term in their respective positions. Thank you, Officers, for your continued commitment to our club.

I hope everyone had a lovely Thanksgiving surrounded by family and plenty of good food. I am reminded each year of all the wonderful foods we enjoy due to the hard work of our honey bee and I am thankful.

It seems like a beekeeper's work is never done but I hope you can find the time to sit back and reflect on all that you have accomplished this year and make plans for the upcoming season. I hope you can find the time to read a few new beekeeping books, renew your subscriptions to American Bee Journal and Bee Culture, listen to a few podcasts, and perhaps even travel to a national beekeeping conference.

NEKBA, in collaboration with the Kansas Honey Producers, will be planning a "Bee Day" at the Kansas State Capitol for early next year to raise awareness for our pollinators, as well as, gain support for a bill which would permit small scale beekeepers to sell honey and honeycomb without a food establishment or food processing plant license. Additional information will be forthcoming. Please plan to attend!





2024 Meeting Dates:

- Dec 16th, Monthly Meeting at Fairgrounds

2025 Meeting Dates:

- Jan 18th, Year 2 & Beyond Class in Olathe (JOCO Extension Office)
- Jan 20th, Monthly Meeting via Zoom
 - Feb 15th, March 1st, or March 15th - Beginning Beekeeping –pencil in the dates
 - Feb 17th, Monthly Meeting at Fairgrounds
 - March 17th, Monthly Meeting at Fairgrounds



Ol' Bee Gal



We ought to do good to others as simply as a horse runs, or a bee makes honey, or a vine bears grapes season after season without thinking of the grapes it has borne. **Marcus Aurelius** Although there are few gifts appreciated more than our sweet honey, you can show some extra love by cooking up a few holiday treats for your loved ones using your beautiful honey. Honey captures the flavor of summer flowers. Remember those sunny days by pouring the sunshine. Here are a couple of our favorite celebration treats.

Eggnog (purchased in the dairy case of the grocery store) is an abomination. This honey sweetened 'nog is extra special and definitely spreads the love and the cheer.

Honeyed Eggnog

- 12 large fresh eggs—well beaten
- Pinch salt
- 2 quarts milk
- 1 t. + a little more nutmeg
- Brandy (optional)
- 1 c. sugar
- ½ c. honey
- 2 TBSP vanilla (real)
- 2 cups cream

In a large saucepan, mix the eggs, sugar and salt until blended. Gradually stir in 1 quart of milk and cook over low heat, stirring constantly until the mixture thickens slightly (170 degrees). DO NOT BOIL. Pour this custard into a large bowl. Stir in the honey, vanilla, nutmeg, remaining 4 c. of milk, and Brandy. Cover and refrigerate until well chilled (3 hours or overnight). To serve: beat cream until soft peaks form. With a whisk, gently fold the cream into the cooled custard mixture. Pour into a punch bowl and sprinkle with additional nutmeg.

Santa's favorite Sparkle Ginger Cookies

- 1 C. sugar
- 1/4 C. butter
- 1/2 C. shortening
- 1 egg
- 2 TBL sorghum molasses
- 2 TBL honey
- 2 C. flour
- 1/2 tsp. baking soda
- 1 tsp. salt
- 1 tsp ground cinnamon
- 1/2 tsp. ginger
- 1/2 tsp allspice

Cream sugar, butter and shortening, add sorghum, honey, and egg--beat again. Combine dry ingredients. Stir into creamed mixture until well blended. Form into balls and roll in granulated sugar. Place on a lined cookie sheet (flatten slightly). Bake 8-10 minutes @ 350 degrees. Allow to stand 2 minutes and remove to a rack to cool. Makes about 3 doz. **use a small portion scoop to achieve uniform cookies. Stack cooled cookies in a straight sided, wide mouth canning jar and top with decorative material for a quick gift.

Merry Christmas, Happy Hanukkah, Merry Kwanza, Blessed New Year to us all. **Becky Tipton**

SUBSCRIBE TO A MONTHLY BEE MAGAZINE. STAY INFORMED.

[Bee Culture Magazine \(link\)](#) [American Bee Journal \(link\)](#)

Use the links to subscribe directly...annual subscription rates under \$6 per month for both!
This is fantastic information right at your fingertips. As part of your beekeeping experience, it's important to be up to date with the trends in bee biology, honey processing, the industry, and much more!

ASK QUINBY & REMI

Dear Quinby and Remi: Last month you mentioned some gift ideas – got anything else that I might get for my family or myself?



Quinby and Remi answer: Personally (Remi is typing) I prefer to eat books but Joli and Cecil love to read fiction- anything that mentions honey bees are their favorites- below are some they have read in the last few years: (as a side note-if anyone is interested in a bees in fiction book club, I'm in! let me know and if we can get a few folks lets do it- call or email me Joli 913-593-3562 or heartlandhoneyks@gmail.com.)

1. **The Beekeeper of Aleppo** by Christy Lefteri -listed first because of what is happening in that part of the world, very interesting about refugee camps and immigration. Very good book.
2. **The Music of the Bees** by Eileen Garvin- I LOVED this book.
3. **The Honey Bus** by Meredith May
4. Anything by Abigail Keam- A beekeeper from Kentucky who writes mysteries!
5. **The Tomb of the Honey Bee** by L.B. Hathaway
6. **The Beekeeper** by Juliet Moore
7. **Honey and Dust** by Piers Moore Ede
8. **The Return** by Nicholas Sparks- I like Sparks but not his one, so much! Fun to watch for his errors about beekeeping!
9. **Queen Bee Mysteries** by Hannah Reed
10. **The Language of the Bees** by Laurie King
11. **The Bees** by Lakine Paull
12. **The Secret Life of Bees** by Sue Monk Kidd
13. **Keeper of the Bees** by Gene Stratton-Porter
14. **Beeing -Life, Motherhood and 180,000 Bees** by Roseanne Daryl Thomas
15. **The Honey Thief** by Elizabeth Graver
16. **Nectar** by David C. Fickett
17. **The Beekeepers** by Peter Redgrove
18. **McKays Bees** by Thomas McMahon
19. **The Honey Thief** by Najaf Mazari and Robert Hillman
20. **Mad Honey** by Jodi Picoult and Jennifer Finney Boylan
21. **Bee Optimism** by Jay Evans
22. **Queen Bee** by Dorothy Benton Frank



Tips for December

- Layers, sometimes the bees are better at staying warm than us!!
- Some will sneak in feed to hives in need during decent weather, 2:1 doesn't freeze as fast as water.
- Not the time of year to pull frames, some days you might be able to crack a lid for a quick peak.
- Later this month or next month you can knock and listen to the hive without getting stung!

- Renew your membership to NEKBA. Keep "The Buzzer" coming. It's a great source of information!
- Make sure that your hives have heavy bricks on them to keep our Kansas winds from blowing them off.
- Monitor food stores in each hive. Check your hives by lifting the back of the hive - are they light?
- Monitor hives for flight on warm days (sunny and above 50 degrees) and check for dead outs throughout the winter.
- Order woodenware for yourself for Christmas so you can spend the winter putting new equipment together and getting it painted.
- Plan some honey gift ideas for friends and co-workers.
- Make beeswax candles and ornaments for holiday gifts. Try your hand at soaps, lotions, and lip balms and other value-added products.
- Subscribe to a monthly bee magazine and stay informed! Links to ABJ and Bee Culture in this newsletter.

Honey Plants



The only blooms we will find in Northeast Kansas during December are Poinsettias and Christmas cacti. So, let's look ahead to next year. I encourage you to start the new year by keeping a record of which nectar and pollen sources bloom in your vicinity and when they bloom. Yes, I am standing on that soapbox again. It will make you a better beekeeper. How, you ask? You will learn which honey bee food sources are in your area. Your record will help to determine if there are any gaps in bloom progression. Knowing where those gaps are will make you aware of the potential for starvation and the need to feed. Honey bees can starve at any time of the year. Wouldn't it be nice to know when a major nectar flow is imminent? Placing honey supers on

those colonies just before that begins, will make it possible to harvest every excess drop of honey. You might discover that you have the potential to collect a type of varietal honey. Varietal honey typically brings a higher retail price. Several brood diseases such as Sacbrood, Chalkbrood, and European Foul Brood can be reduced by consistent spring food availability or supplemental feeding as the weather warms. That's an easy fix should you suspect a brood disease is present. Also, one of the triggers for swarming is the availability of ample food sources. That's handy to know. I hope I have inspired you to keep records.

Northeast Kansas is rich in a diversity of pollen sources. Feeding pollen substitutes or pollen patties may not be necessary in your location. Typically, our vegetation offers a steady supply of pollen. Knowing different plant species may be challenging for some. Keep in mind that many lists of food sources are very generalized to encompass all the continental United States. There are reference sources available at no cost. The public library has books to help with plant identification. For those completely new to tree identification I recommend The Sibley Guide to Trees by David Allen Sibley. To learn which plants are honey bee food sources look for 100 Plants to Feed the Bees by the Xerces Society and Garden Plants for Honey Bees by Peter Lindtner.

There are also great websites available on the internet to help. Here are just a few.

<https://honeybeenet.gsfc.nasa.gov/Honeybees/Forage.htm> This site has an interactive map. Click on Eastern Kansas to see a list of Honey Bee forage species for our area. Wikipedia is always handy should you not remember any other online sources. https://en.wikipedia.org/wiki/List_of_honey_plants For pollen, refer to: https://en.wikipedia.org/wiki/List_of_pollen_sources

You can download and read, for free, a copy of Frank Pellett's American Honey Plants.

<https://www.horizontalhive.com/download-free/american-honey-plants-pellett.pdf> Don't be fooled by the 1920 publishing date. Not much has changed in 100 years.

In a pinch, if you see something blooming that you aren't able to identify, you might ask the landowner. That might be a good opportunity to encourage pesticide safety and promote honey sales. Or you can use your smart phone's camera identification feature.

For those new to beekeeping, remember honey bees will generally forage within a two-mile radius. Under extreme conditions honey bees will travel up to 5 miles. You may not be able to learn all that is available in the first year. In rural areas, field crops are usually rotated. That's okay. Keep those records year after year and build a database. **Jo Patrick, Honey Plants Chairman**

Continuing the Legacy: *The NEKBA Youth Scholarship Program*

NEKBA's primary function is to promote successful beekeeping within the region and an important element of that function is to generate interest among our youth to continue the legacy of beekeeping in America. Much like a hive swarms to propagate the species and its influence as pollinators in nature, the NEKBA Youth Scholarship Program looks to start new hives with interested and motivated youth. Our program links experienced beekeepers as mentors to deserving and motivated students. The students do the work to maintain their hives but also contribute their knowledge and experiences to the others in their communities. Schoolmates, family members, and neighbors hear about the youth experiences and get excited about beekeeping as well. It is a win-win for everyone.

Over the past two years as the coordinator for this program, I've been privileged to watch nine youths mature into beekeepers. They worked hard to maintain their hives but also competed successfully in fairs, gave presentations to school and church groups, and got their families involved with them. They volunteered at NEKBA events – contributing directly to the success of NEKBA behind the scenes. And most importantly, they got the passion to promote beekeeping now and into the future.

However, the cornerstone for the success of the Youth Scholarship Program is the mentors who teach and guide the scholarship recipients throughout their first two years of beekeeping. Without qualified and willing adults to help these kids, we must turn them away. Mentors help the youth assemble and locate their hives, install bee packages, coach through periodic hive inspections, teach about hive management, and help harvest the honey. After the two years, the youth have a viable hive, the knowledge to maintain that hive, and a lifelong friend in the mentor.

We try to assign mentors that live close to students to make it easier on everyone to do this mission. We currently need mentors for students located in Spring Hill, Wellsville, and Ottawa but would like to have a roster of interested NEKBA members for future youth scholarship recipients. If you are interested in being a mentor now or have questions about mentoring in the future, please contact **Dale Spurlin** at lightedpathhoney@outlook.com. Be a part of the legacy and pass it on to the youth – the beekeepers of tomorrow!



Military/Veterans Apprenticeship Program

Are you a veteran or on active duty and thought about getting into beekeeping? The Northeast Kansas Beekeepers Association (NEKBA) offers an apprenticeship for veterans and active-duty service members that covers the cost of education, bees, and equipment. The association also provides a mentor to help you with your journey.

Applications must be submitted by October 31. Spots are limited, and more information can be found at <http://www.nekba.org/scholarship.html>. If you have any questions, please let me know.

Buck Bradley, 785-248-1005, Babradley82@gmail.com

Buck Bradley, Military/Veteran Appr. Liaison



Northeastern Kansas Beekeepers Assoc. Enrollment for 2025

Please include your selection and contact information below

2025 Year-2 & Bee-Yond Class (Jan.18, Saturday)

Name(s) of those attending:

2025 Bee-ginning Beekeeping Class (Feb.15, Saturday)

Name(s) of those attending:

2025 Bee-ginning Beekeeping Class (Mar.01, Saturday)

Name(s) of those attending:

2025 Bee-ginning Beekeeping Class (Mar.15, Saturday)

Name(s) of those attending:

Class registrations include annual NEKBA membership and delivery of the monthly newsletter via email.

Your contact information:

Name: _____

Address: _____

City, State: _____

Phone: _____

Email: _____

Enrollment at www.nekba.org via PAYPAL and at <https://nekba.square.site> . Credit or debit bank cards accepted.

Questions: Kristi Sanderson Email: sandersonk09@gmail.com Phone: 913-768-4961

Starting year 2- This class is for you. Requeen, making splits, maintaining healthy hives. Anyone having hives less than 5 years will learn valuable information.

January 18, 2025, Johnson County Extension Office – Olathe, KS 11811 S Sunset Dr, Olathe, KS

X \$50 each = _____

Everything you need to know to get started in beekeeping in NE Kansas- BEST PRACTICES for our area. Excellent for newer beekeepers with 3 years of experience or less. Three options!

1) February 15, 2025, Douglas County Fairgrounds 2110 Harper St, Lawrence, KS

X \$50 each = _____

Or 2) March 1, 2025, Wyandotte County Extension Office – Kansas City, KS 1216 N 79th St, Kansas City, KS

X \$50 each = _____

Or 3) March 15, 2025, Johnson County Extension Office – Olathe, KS 11811 S Sunset Dr, Olathe, KS

X \$50 each = _____

Total Submitted _____

Complete print form & mail check payment to:
NEKBA, Attn Robert Burns, Treasurer
7601 W. 54th Terr., Shawnee Mission, KS 66202



Northeastern Kansas Beekeepers Association
Year 2 and Beyond Beekeeping

January 18th, 2025

Douglas County Fairgrounds, Flory Building

8:30-8:50	Registration
8:50-9:00	Introduction - Kristi Sanderson
9:00-9:45	Winter & early spring inspections - Matthew Brandes Late winter inspections (January)—Hive hefting, when & how to feed hard sugar, what temps can brood frames be pulled out, accessing dead hives Early spring (March) queen health, colony populations, cleaning bottom board & propolis off frames, hive box reversals or not, removing entrance reducers & mouse guards
9:50-10:10	Spring feeding - Bob Burns When, why and how to feed overwintered hives
10:10-10:25	Break/vendor time
10:25-11:15	Splitting, requeening & swarming - Kristi Sanderson Finding the queen, making & moving splits, preventing swarms, where to add new frames, what to do once hive has swarmed, cutting queen cells or not
11:20-12:05	Fall management - John Chitwood Preparing bees for winter after honey supers have been removed When to do mite treatments, feeding for winter survival
12:05-1:05	Lunch/vendor time
1:05-1:55	Varroa mites and diseases - Joli Winer How to test and treat for mites and diseases that commonly exist in hives
2:00-2:30	Extracting honey - Buck Bradley The ins and outs of extracting
2:30-2:45	Break/vendor time
2:45-3:25	Producing liquid and comb honey - Cheryl Burkhead Evaluating hives to make comb honey and knowing when to add supers for a good honey harvest
3:30-3:50	What blooms in the fall - Jo Patrick Learn to identify fall and nectar fall plants
3:50-4:30	Q &A with the presenters
4:30-4:45	Closing Remarks

**Topics or presenters subject to change

Enroll online @ www.NEKBA.org Any questions, contact Kristi 913-768-4961, or email sandersonk09@gmail.com.

Please help us tidy up at the end of the day. Thanks for joining us!

Kristi Sanderson, Special Events Coordinator 2025 – Bee Classes



Northeastern Beekeepers Association

Beginning Beekeeping Class

See date and location below

8:30-8:50	Registration
8:50-9:00	Introduction - Kristi Sanderson
9:00-9:20	My First Years in Beekeeping - Mark & Milisa Suckow
9:25-10:10	Equipment and acquiring bees - Kristi Sanderson
10:10-10:25	Break/vendor time
10:25-11:10	Honey Bee Biology - Cheryl Burkhead basic biology that will aid in making good decisions
11:15-12:00	A Year in the Bee Yard - Becky Tipton overview of what to expect when with your bees
12:00-1:00	Lunch/vendor time (on you own)
1:00-1:10	Learning opportunities with NEKBA - Kristi Sanderson
1:15-1:30	Honey Plants - Jo Patrick important honey plants
1:35-2:05	Hive Location and Hive Inspections - Matthew Brandes hive location & looking inside
2:05-2:20	Break/vendor time
2:20-3:10	Mites and Diseases - Joli Winer testing and treating for mites and recognizing diseases
3:15-3:45	Extracting Honey - Bob Burns equipment needed
3:45-4:30	Q & A

**Topics or presenters subject to change

Same program, different dates and locations

February 15th Douglas County Fairgrounds Flory building, 2110 Harper St Lawrence, KS 66046

March 1st Wyandotte County Extension Office 1216 N 79th St, Kansas City, KS 66112

March 15th Johnson County Extension Office 11811 S Sunset Dr. Olathe, KS 66061

Enroll online @ www.NEKBA.org Any questions, contact Kristi 913-768-4961, or email sandersonk09@gmail.com.

Please help us tidy up at the end of the day. Thanks for joining us!

Kristi Sanderson, Special Events Coordinator 2025 – Bee Classes

NORTHEASTERN KS BEEKEEPERS' ASSOC. 2025 MEMBERSHIP APPLICATION

NAME _____
ADDRESS _____
CITY _____ STATE _____ ZIP+4 _____
PHONE _____ Email Address _____

Membership Northeastern KS Beekeepers per year (July-Dec. \$12.50)	\$25.00 _____
Additional family members wanting voting rights \$1.00 per person	\$1.00 _____
Additional family member's name _____ (Youth Membership (18 years of age or under)	\$12.50 _____
Membership for Kansas Honey Producers Association	\$25.00 _____
American Bee Journal (discounted rate through association)	1 year \$29.75 _____
Bee Culture Magazine (or subscribe online at www.BeeCulture.com)	1 year \$34.00 _____
Scholarship / Military/Veteran's Appr. Donation	_____
Total	_____

Make checks payable to: NEKBA or Northeastern Kansas Beekeepers Assn.

Mail to: Robert Burns, 7601 W 54th Terr., Shawnee Mission, KS 66202 ph. 913-481-3504, rburnshoney@gmail.com

You may join, re-new, register, donate and pay online at www.nekba.org

MARKET PLACE

MENTORING-SWEET PRAIRIE HONEY

Need help with your hives? -Spring inspections, installing packages, making splits, queen evaluation, diagnosis of pests and diseases, mite monitoring and treatment, etc. I can help you with your beekeeping needs! I am a certified master beekeeper with 30+ years of beekeeping experience. I will leave you with a written course of action after our session at your hives. Call or text 913-768-4961 or email Kristi Sanderson at sandersonk09@gmail.com for pricing and appointment times.

BEEKEEPERS.COM

Beekeepers.com (Jordy's Honey Company) in Lenexa, KS. Beekeepers.com is your only local full-service beekeeping store. We carry a full line of Beekeeping Supplies, Protective Clothing, Bottles, Bee Packages, Nucs and Queens. Visit our website Beekeepers.com, to view our entire line of beekeeping supplies. You can also shop in-person at our store in Lenexa. We ship queens directly to YOU! Order at QueenBees.com. Queens available March - October. Our hours are Monday-Friday 9:00-4:00, Saturday 9:00-12:00. You can find our honey at The Overland Park Farmers Market. **Robert Hughes**, 14054 W 107th St, Lenexa, KS 66215, 913-681-5777 or email Info@Beekeepers.com

COTTIN'S HARDWARE & RENTAL

Cottin's stocks a full line of beekeeping equipment year-round including items manufactured by Harvest Lane Honey, Little Giant, and Bug Baffler. Products include hives, supers, frames, foundations, extractors, tools, and protective apparel. We also stock a full line of Home Brewing Mead Making supplies. Located in Lawrence, KS at 1832 Massachusetts Street (South of Dillon's). We are open Monday - Friday 7:30 am - 6:00 pm, Saturday 8:00 am - 5:00 pm, and Sunday 10:00 am - 5:00 pm. You can follow us on Facebook, Instagram and Twitter. Call us at 785-843-2981 or email us at hardware@sunflower.com.

CB'S HONEY

CB's Honey offers pure raw Kansas honey available in 5 gal buckets. Grafted queens and queen cells, and a limited number of nucs/packages. [CB's Honey | Facebook](#). Located just SE of Topeka. 4521 SE 61st Street, Berryton, KS 66409. Call or text Cheryl Burkhead at 785-224-9077 or cherylbhoney@gmail.com

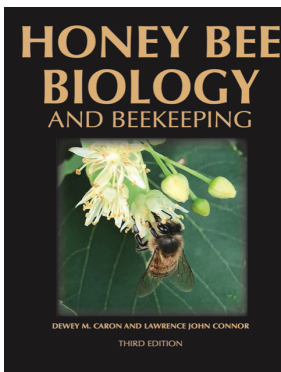
CEDAR RIDGE BEES

5 Frame Nucs for Sale. We are your local Premier Bee Products Dealer specializing in plastic foundation made entirely in the U.S.A. We sell bucket feeders and other bee equipment. Call or text Philip Knaus at 785-581-4216 or contact us at cedarridgebeehives@gmail.com - Check out our bees and products at www.cedarridgebees.com Cedar Ridge Bees 585 N 500 Rd, Overbrook, KS 66524.

T CREEK BEES AND HONEY – Tecumseh/Berryton, KS

Tecumseh Creek winds its way through the home yard lending its name to the brand. Located between Lawrence and Topeka, T Creek offers 5-frame nucs, online honey sales, custom honey packing, wholesale delivery to the Topeka / Lawrence area, 5-gallon buckets of honey, and drop-shipping wholesale service to rural grocery stores and agritourism destinations. Visit www.tcreekbees.com Email: tcreekbees@gmail.com or find the bees on Facebook. Order 2025 5-frame nucs by visiting the website and completing the nuc order form. Owner: Tim Urich. LLC in the State of Kansas and licensed by Kansas Dept of Ag.

Honey Bee Biology and Beekeeping, Third Edition, Dewey M. Caron and Lawrence John Connor,



\$90 postage included. *This book should stay on the dashboard of every beekeeper's truck. It's that good, and that necessary.* Kim Flottum, *Bee Culture*. This comprehensive textbook easily replaces many beginner books while adding comprehensive details of bee biology essential to becoming a successful beekeeper and student of the honey bee. First released in 1999, *Honey Bee Biology and Beekeeping* is widely accepted as a major textbook of Apiculture (beekeeping). Beekeepers and bee clubs use it to teach other beekeepers. Universities use it to teach college students bee biology and beekeeping. It concentrates on the 'why', 'how' and 'when' of beekeeping. It explains bee and beekeeping basics in a manner meaningful to people who lack an extensive background in biology. Yet it is not over-simplified and provides a meaningful source of beekeeping information for the informed beekeeper. The Third Edition has been carefully edited, updated and expanded to 480 pages. New chapters have been added, as have colorful new graphics and photographs. The Glossary has also been expanded. **Wicwas Press LLC Kalamazoo, MI 49001 - www.wicwas.com**

The Association does not endorse nor evaluate the advertisements, products, or services offered in the Buzzer.

Northeastern Kansas Beekeepers Association
Robert Burns, Treasurer
7601 W 54th Terr
Shawnee Mission, KS 66202-1129

Address Service Requested

Meeting

Monday, Dec 16th, 2024 - Fairgrounds

The Northeastern Kansas Beekeepers' Association

Membership is open to anyone interested in bees or bee culture. Dues are \$25.00 per calendar year (December 31-December 31) for the first in the family joining. Those joining in July or later in the year may pay \$12.50 for ½ year. Additional members of a family wanting voting privileges shall be assessed dues at \$1.00 per year. Youth memberships (18 years of age and younger) are \$12.50 per year. Please submit new memberships and renewals to the treasurer or on-line at www.nekba.org.

The Bee Buzzer is the official publication of the Northeastern Kansas Beekeepers' Association, Inc. and is published monthly. Commercial ads are accepted in the newsletter for a fee; non-commercial ads by paid members are accepted & are free.

The library of the association is free to all members. Books may be checked out at the meetings and kept for a period of 30 days. The bee publications, *The American Bee Journal* and *Bee Culture* can be subscribed to through the treasurer or on-line. The *American Bee Journal* is offered at a discount through the Association only.

The Association meets each month, generally on the third Monday at 7:00 p.m. except during the months of January and July. This is a non-profit organization; elected officers serve without pay. Everyone is invited to attend the meetings. Check *The Bee Buzzer* or website at www.nekba.org each month for the actual date, time, and location. If the weather is bad, call an officer or check the website to find out if the meeting will be held or cancelled.

2024 Officers

President: Cheryl Burkhead , 4521 SE 61st St., Berryton, KS 66409 cbfritz@aol.com	785-224-9077
1st VP (Program Chair): Matt Brandes , 4741 Highway K 68, Wellsville, KS 66092 matthew@n523rv.com	913-706-3087
2nd VP (Librarian): Michael Hewitt , 9221 SE Berryton Rd, Berryton, KS 66409 garlicranch69@gmail.com	785-230-0827
3rd VP (Honey Plants): Jo Patrick , 611 E Sheridan St., Olathe, KS 66061 brian-patrick@sbcglobal.net	913-645-8947
Secretary: Elaine Ellenz , 17650 W 113 th St., Olathe, KS 66061 elaineellenz@gmail.com	913-515-1607
Treasurer: Robert Burns , 7601 W 54 th Terr., Shawnee Mission, KS 66202 rburnshoney@gmail.com	913-481-3504
Youth Scholarship Chair: Dale Spurlin , 24964 160 th Ct., Leavenworth, KS 66048 LightedPathHoney@outlook.com	913-775-0997
Military/Veteran Appr. Liaison: Buck Bradley , 11 E 900 Rd., Baldwin City, KS 66006 buckusmc00@hotmail.com	785-248-1005
Editor: Tim Marshall , 4736 Halsey St., Shawnee, KS 66216 flyinmonk@yahoo.com	816-392-6854
Special Events Coordinators:	
Classes: Kristi Sanderson , 1252 E Frontier Ln., Olathe, KS 66062 sandersonk09@gmail.com	913-768-4961
(Funday): Joli Winer , 19201 S Clare Rd, Spring Hill, KS 66083 heartlandhoneyks@gmail.com	913-593-3851
Webmaster: Robert Burns , 7601 W 54 th Terr., Shawnee Mission, KS 66202 rburnshoney@gmail.com	913-481-3504

Visit on-line at www.nekba.org. Save time. Join, re-new, or sign-up.