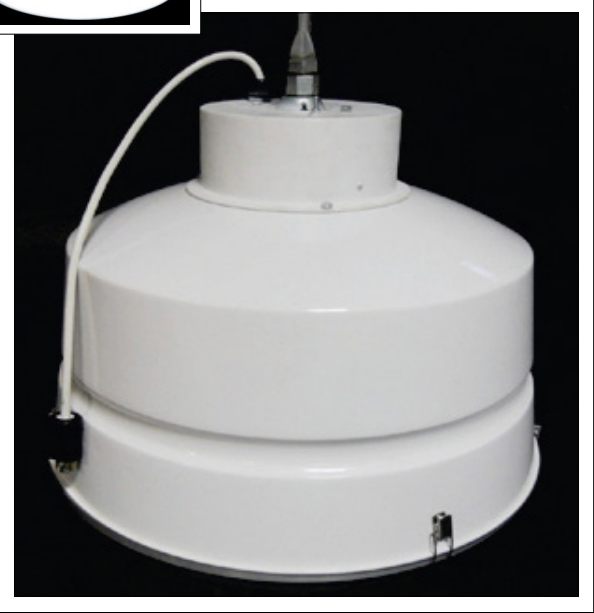


T9-MH-XL-DIRECT with Lens

The **MH-XL-Direct** mount fixture comes with **Patented Super Reflector Technology** which produces at least 20% more light than any other fixture. It is perfect for lighting all types of indoor sports, manufacturing and industrial facilities with ceiling 15 to 110 feet high.

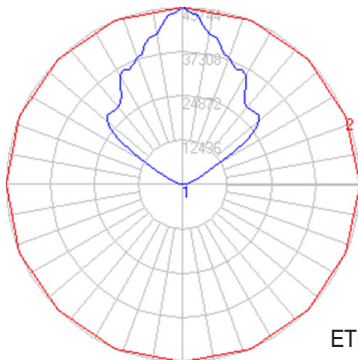


Description

T9 Ceramic Metal Halide direct fixture with universal T9-30,000 hour lamp and 60,000 hour dimmable electronic ballasts comes pre-wired and assembled.

- A 24" Aluminum outer housing with high temperature polyester powder coat contains our Patented Super Reflector Technology with a Luminaire Efficacy Rating (LER) 95%.
- Comes with T9 lamp, ballasts mounted in attached ballast enclosure with a swivel ball cover for hook or pendent mount, cord and plug.
- Available with a tempered glass lens.
- For Open Rated fixture use the T12 lamp with outer jacket.
- Standard voltage 200 to 480 volt.
- Weight 30 lbs.
- Five year warranty on housing and reflector.

T9-MH-XL-DIRECT Ordering Information: (Example: T9-MH-XL-DIR/210W/T9/LI/GL/HCP/W6/L7-15P)								
Lamp		Specify Voltage	Fixture Body		Whip & Plug		Options	
210	T9 or T12	200 to 480	Aluminum	AL	3'	W3	Lamp Included	LI
315	T9 or T12						15 Amp 277V	L7-15P
420	T9 or T12				Tempered Glass Lens	GL		
630	T9 or T12				Hook, Cord & Plug	HCP	Emergency Restrike	ER



Test:
ETL Photometric
630 Watt



T9
Lamp



T12 Open
Rated Lamp



PATENTED

www.bestlights.com

