

Since 1948 Exploring the Wonderful World of Beekeeping Together

The Bee Buzzer

Monthly Publication of the

Northeastern Kansas Beekeepers' Association

VOLUME 76, NUMBER 4

EDITOR: TIM MARSHALL

April 2024

General Meeting

Monday, April 15th, 2024 (7:00 p.m.)

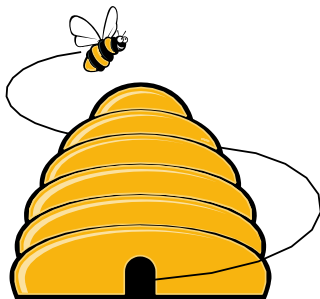
Douglas County Fairgrounds Bldg. 21N

2110 Harper St., Lawrence KS

Main Program: Swarm Trapping - Utilizing local genetics to grow your apiary, presented by Noah Summers. The swarming season is coming here. This will be a great presentation as well as perfect timing for what's coming up.

Beelines

By President Cheryl Burkhead



Spring is definitely one of the busiest and most exciting times in beekeeping. How you manage your bees this spring can impact the entire course of the season. For beginners who are getting a package or a nuc, make sure your equipment is assembled, painted, and ready to receive the bees that are to arrive this month. Make sure you have plenty of sugar on hand as your colony will need to be supplemented with a 1:1 sugar syrup until almost all its frames in each hive box are drawn out. Hopefully, you have attended one of our beekeeping classes to get you off

to a good start. For those of you who have established colonies, have you inspected your bees and equalized colonies? Did they need feed and are you monitoring their need for food? What were their mite loads? Do you need to treat? Did you see any pests or diseases? How old is your queen? Addressing these issues now and planning a course of action will help prepare your bees for the upcoming season.

There's a lot of work ahead. By the time you are reading this, I will likely have completed splits for customers and made a few for myself, as well. It is fun to make nucs. I do a few bee packages too. I would encourage you to make a few splits for yourself either with a purchased mated queen, a ripe queen cell, or perhaps a queen that you have grafted. Learning how to graft queens is a game-changer and is an invaluable skill. We are offering a queen rearing class instructed by Gary Reuter from the UMN Bee Lab in May. I encourage all of you who have had bees for several years to make a few nucs. Dr. Jamie Ellis has a great article about utilizing nucs in the apiary. <https://edis.ifas.ufl.edu/publication/IN869>. One of my favorite quotes in regard to nucs is, "Almost every emergency of management can be met by putting something into or taking something out of a nucleus, while nuclei themselves seldom present emergencies." E.B. Wedmore, A Manual of Beekeeping

If you find that you have some time this month to volunteer, we have opportunities at our Open Apiary at Pendleton's Country Market (see Joli Winer for details) or distributing NEKBA club information at Beekeepers.com in Lenexa during their package and nuc pickup dates. Please consider donating a few hours of your time in April. A link to SignUpGenius has been provided. Thank you!

<https://www.signupgenius.com/go/60B044BABA82BA3FD0-47751624-club>



2024 Meeting Dates:

- April 6, 2024 Open Apiary 9am
- April 7, 2024, Open Apiary 1pm
- April 13, 2024, Open Apiary 9am
- April 15, 2024, Open Apiary 5pm
- April 15, 2024, Monthly Meeting (Bldg. 21)
- April 20, 2024, Open Apiary 9am
- May 20, 2024, Monthly Meeting (Bldg. 21)
- June 1, 2024, Fun Day!!



Ol' Bee Gal

Will your bees need a bee waterer? The answer is yes. Will your bees use a pond? Yes. Will your bees use a creek? Yes. Will your bees use a bird bath, dog water bowl, neighbor's hot tub or neighborhood pool? Absolutely.

Once your bees have found a water source they like, they will dance information to their hive sisters to show them the way to water. A bee hive will consume an amazing amount of water daily. On a warm/hot summer day, each hive will consume over a quart of water.

In an average sized hive, as many as 1000 bees will be actively flying to a watering hole. (Want to see a beeline in action, they fly a very straight line to and from the hive when foraging water.) Our summer days are long, and the bees will continue from dawn to dusk, and each of these bees may make as many as 50 trips daily. The water will be deposited within the hive. With the fanning of their wings, the workers will provide a climate-controlled system to alleviate the buildup of heat inside the hive.

Heat is deadly to honey bees. Worker bees must keep the ambient temperature around brood at 91-95°F. Temperatures over 100°F will kill brood. Temperatures above 104°F can kill adult bees. The longer it takes for a field/foraging bee to return with her load of water, the more bees will be needed to be engaged in water gathering. While water collecting is the primary function of your bees on very hot days, they are not engaged in nectar gathering and will be consuming honey because of the energy expended. Yes, your bees can gather water from that pond ¼ mile from your hives, but a closer source will allow them to acquire water more quickly and more efficiently.

The best water source will be easily accessible with safety mechanisms to allow workers to drink and not drown. A water garden with a pond is beautiful, your bees will undoubtedly love it, but nothing so elaborate is necessary. A chicken waterer with gravel in the water tray can serve quite well. A large bird bath with gently sloping sides is very effective. We like a half whiskey barrel with aquatic plants. Water lettuce is extremely easy to grow and allows bees easy access to the water. But floats can serve the same purpose. Wine corks, tennis balls, pool floaties, and artificial plants can provide a landing zone. Any of the floating devices may be affected by the wind and some things work better than others. In a shallow water dish, rocks are fine. Be prepared to fill small containers more than once a day. It's why we like whiskey barrels—they hold a good quantity of water. We are ALWAYS blessed with tadpoles and snails in our mini water garden as well. The frogs keep mosquitoes from becoming a problem.

Strangely, bees have no dance language for directly outside the hive. To help them find your water source, place it 25'-50' from your hive entrance. If there is another water source in the area, place your water source between the hive and the source you would like to avoid (pool or hot tub). If you are using a water source without live plants, a few grains of rock or stock salt can add appeal for the bees. They love the minerals and will often be seen in a feed lot foraging water near a salt block.

Most importantly, do not wait until the bees are desperate for water before establishing your water source. ESTABLISH YOUR WATER SOURCE AT THE SAME TIME YOU SET UP YOUR HIVES! Once bees find and start using a water source, it is nearly impossible to get them to leave that chosen location. Establishing a water source for your hive is an example of being a good beekeeping neighbor. Do not allow your bees to become a nuisance.

Becky Tipton

SUBSCRIBE TO A MONTHLY BEE MAGAZINE. STAY INFORMED.

[Bee Culture Magazine \(link\)](#) [American Bee Journal \(link\)](#)

Use the links to subscribe directly...annual subscription rates under \$6 per month for both! This is fantastic information right at your fingertips. As part of your beekeeping experience, it's important to be up to date with the trends in bee biology, honey processing, the industry, and much more!



ASK QUINBY & REMI

Dear Quinby and Remi: Last year was my first year of beekeeping. My hive made it through the winter, but they are getting so strong when do you split a hive? What should I do?

Quinby and Remi answer: If it is strong, more than 4 frames of brood during the first week of April, more than five frames of brood the 2nd week of April and more than six

frames of brood the 3rd week of April. You need to find your queen so that you know where she is, and you don't take her, and remove all brood over those amounts. Make up some 3 frame nucs to increase your numbers, you'll need to add a purchased mated queen to your nuc. If you do not want to increase your numbers, you can get neighbors or relatives into beekeeping. Another option is to offer to sell your brood on the NEKBA Facebook page or sell a nuc. Please note if you choose to do nothing, they will swarm and there goes you ½ of your bees. The practice now is not to manage your bees for swarm prevention and instead to put up swarm boxes to catch your swarms. You are still increasing you hive numbers, if you catch the swarm, it's kind of iffy! Remi and I suggest that you manage your hives for swarm control.

Dear Quinby and Remi: I have some queens ordered but I don't know how to take care of them? I don't think I can use them right away; it'll take a few days to make my split and requeen. The weather might be cold too. What do you suggest?

Quinby and Remi answer: Great question! You'll want to keep your queens at room temperature, maybe on the kitchen counter. You'll want to keep them away from pets (Remi and I love to destroy expensive queens in their cages). Your queens come with food on one end, all they need is a little water each day. Put some water in a cup and stick your finger in the water and run the finger with the water on the screen on the queen cage. That's it! Do not feed your queen honey, it makes them sticky, and they can't get cleaned off. It also makes them poop in the cage. They have food, they only need water.

Dear Quinby and Remi: I would love to go through a hive with someone do you have any suggestions on who I can call?

Quinby and Remi answer: Did you know that the bee club has an open apiary/mentoring program? Our club apiary received a grant from the Great Plains Master Beekeepers (GPMB) to be used for education! We have started a bee yard with 10 hives. Several times a month we open the apiary to provide education to our members, or really anyone who wants to learn about beekeeping! Details of meeting times can be found in *The Buzzer* and on our website at www.nekba.org. On each visit we go through hives and usually have a plan to share what should be going on in your hives. These visits also provide an opportunity for you to ask questions about your own hives.

Quinby and Remi would love to answer your questions. Contact them my emailing their owner at heartlandhoneyks@gmail.com.



NEKBA 2024 FUNDAY EXPO

Saturday, June 1st Douglas County Fairgrounds, 2110 Harper Lawrence KS

Speaker Presentations, Swarm Demo, Open Apiary, Value-Added Talks, & Honey Ice Cream!

Guest Speakers:

**Dr. Jennifer Tsuruda
Dr. Judy Wu-Smart
Dr. Autumn Smart
Blake Shook
Rogan Tokach
and More!**

Saturday Dinner & Program

For an additional fee we will have an optional catered dinner from Stanley James BBQ. Rogan Tokach will present "(Bee) Suits and Thai: Beekeeping Lessons Learned in Thailand".



Funday Vendors- Contact for Pre-Orders

Hill Co will be coming! Here is a discount link for the Funday, <https://hillcobees.com/discount/NEKBA>. Use the code "NEKBA" at checkout. This is only for pre-orders that HillCo will bring. This is for pickup only. Contact Dadant at 877-732-3268 or jradlers@dadant.com Beekeepers.com at 913-681-5777 or info@beekeepers.com

Hotel Arrangements

A group rate: The Country Inn and Suites, 2176 E 23rd, Lawrence KS 66046. 785-727-1825 Group: Heartland Honey Group #ZZ58M4



Register here at www.NEKBA.ORG
\$55.00 fee

QUESTIONS?
Funday: Call Joli @ 913-593-3562
Registration: Call Robert @ 913-481-3504

Funday Silent Auction June 1, 2024

A large component of the fun during Funday is the Silent Auction. NEKBA members have generously donated honey bee related items to the Funday Silent Auction in the past and we hope to receive lots of these again this year. ***The organizers are expanding their wish list to include non-honey bee items.*** Perhaps you have a piece of sports memorabilia, theater tickets, or event tickets. Maybe you are creative and would like to donate a one-of-a-kind item. Did you divide your perennials and have extras to share? We would appreciate your auction donation. Proceeds from the silent auction will be used for future Funday speakers in addition to the military and youth scholarship programs. We ask that auction items be brought to Building 21, Douglas County Fairgrounds, at the start of Funday. If you are unable to attend but would still like to donate please email Jo Patrick at brian-patrick@sbcglobal.net or call (913) 645-8947 to make arrangements for pick up.

Funday!! (Sign up now, you don't want to miss it!!)

The Funday committee is working on some exciting new things for this year! Mark your calendars and "Save the Date" for Saturday, June 1st. The Funday Expo will be held at the Douglas County Fairgrounds, 2120 Harper, Lawrence, KS. The one-day beekeeping expo will be one of the highlights of your beekeeping career. You will celebrate with great food, fresh-baked breads with honey butter and creamed honey, a delicious hot lunch and homemade honey ice cream! We are also planning a BBQ dinner (for an extra fee) where you will get to mingle with our guest speakers. If you purchase one of our sponsorships at the Queen or Drone Level, you will get to sit at a table with one of them!

Guest speakers will include Blake Shook from Texas, a commercial beekeeper and owner of The Bee Supply; Dr. Jennifer Tsuruda from the University of Tennessee; Dr. Judy Wu-Smart from the University of Nebraska, Lincoln; Dr. Autumn Smart from the University of Nebraska, Lincoln; Rogan Tokach from Auburn University (currently in Thailand studying the *Tropilaelaps* mite); Eugene Makovec, editor of the American Bee Journal; and many others plus our own local talent. We'll have our swarm demo, value-added presentations, and live hives to go through with an experienced beekeeper. Hives with problems will be present so you can diagnose issues.

Vendors! We'll have a lot of vendors. HillCo will be coming! Here is a discount link for the Funday, <https://hillcobees.com/discount/NEKBA>. You can also use the code "NEKBA" at checkout. This is only for pre-orders that HillCo will bring. This does not include shipping; you will need to select "pickup" when checking out. Other vendors who have been confirmed are Dadant and Sons and Beekeepers.com. We'll keep you updated on other vendors as they confirm.

Funday Sponsorships Offered!

This year for our Funday, Saturday, June 1st, 2024, we are excited to offer a new NEKBA member sponsorship program. Since we have so many generous members, we decided to offer you a chance to support the club. We are asking for generous donors to help supplement the cost of the Funday.

If you have a business that you would like to put on our sponsor board and in our Funday Conference Program, we would love to do that. If you do not have a business but would like to have your name listed, we would like to do that as well, or you could choose to be anonymous. Please note that at the Drone and Queen Levels you can sit with one or more of our guest speakers at the Saturday night dinner. If you would like to have a vendor booth, we have a different sponsorship program for vendors.

Member Sponsorships:

Queen Level \$1000 4 registrations, lunch, dinner at a table w/one guest speakers! Plus 20 Quilt raffle tickets.
Drone Level \$500 3 registrations, lunch, dinner at a table w/one guest speakers! Plus 15 Quilt raffle tickets.
Worker Level \$250 2 registrations and lunch and dinner plus 10 Quilt raffle tickets.
Honey Level \$150 1 registration and lunch and dinner plus 5 Quilt raffle tickets.

Joli Winer, 2024 Funday Coordinator



The NEKBA Beeyard

The NEKBA Open Apiary equipment was funded with a grant from the Great Plains Master Beekeepers. The excellent educational opportunity will be held weekly in April and at least twice a month in the other 'active' beekeeping months. Because of the grant and the opportunity to have the liability insurance covered by the GPMB policy we would like for all participants to join the GPMB program at <https://gpmb.unl.edu> click on the "become a member" tab and follow the directions to join for free. (Note: You do not have to join GPMB to take part in this educational opportunity.) This is a great program with many educational opportunities, many of which you may choose to take part in. At the open apiaries you can expect to go through hives to see all stages of brood, queens, and take part in assessing the hives and queens. A great deal of time is also spent on using your smoker and hive tool and talking to participants about issues they are seeing in their hives. Bee suits are available and only NEKBA hive tools and smokers will be allowed in the apiary. **The hives are located at Pendelton's Country Market, 1446 E 1850 Rd, Lawrence, KS 66046.** These events are free, but we do ask that you sign up so that we know that you are coming. To sign up use the sign-up genius link: <https://www.signupgenius.com/go/20F0C48ADA82BABF49-48334714-look>

April Dates: 6th@9am, 7th@1pm, 13th@9am, 15th@5pm, 20th@9am

April 6th - Package Installation

April 7th - Package Installation and Making a Split

Spring Hill - Heartland Honey Beeyard

This excellent educational opportunity will be held monthly on the second Thursday of the month. Dates are April 11, May 9, June 13, July 11, August 8, and September 12th at 5:30 pm. These open apiaries offer an opportunity to go through hives with another beekeeper- we look for eggs, larva, and queens. A great deal of time is also spent on using your smoker and hive tool and talking to participants about issues they are seeing in their hives. Bee suits are available and only NEKBA hive tools and smokers will be allowed in the apiary. Because of the opportunity to have the liability insurance covered by the Great Plains Master Beekeepers policy we would like for all participants to join the GPMB program at <https://gpmb.unl.edu> click on the "become a member" tab and follow the directions to join for free. This is a great program with many educational opportunities, many of which you may choose to take part in. Please note: You do not have to join GPMB to take part in these educational opportunities. **The hives are located at Heartland Honey at the home of Joli Winer and Cecil Sweeney at 19201 S Clare Rd Spring Hill KS 913-593-3562** call or text or email heartlandhoneyks@gmail.com so that we know that you are coming.

April 11, May 9, June 13, July 11, August 8, and September 12th at 5:30 pm

Tips for April

- Sign up for GPMB, it's free and gives you great videos and information!
- The club Beeyard will do package installations and a split this month, great time to see it happen and learn.
- Swarming - it's here, let it happen, catch'em all, or splits will be happening this month.
- Really suggest reading and learning about a recovery Nuc(s) for your apiary, more bees give you more options. A Nuc on hand or started now can save the hive during the honey flow, or later this season.
- Buying a queen saves time in getting the hive growing, natural queening takes longer but does give a brood break.
- Brood breaks can be good for fighting mites, even better is a brood break with a correctly timed OA vaporization!



Military/Veterans Apprentices Program

I am Buck Bradley. I will be continuing the excellent work that Andy Nowachek and his team have done over the last few years. I was born and raised in Ottawa, Kansas. After a 21-year career in the Marine Corps, I recently returned home from North Carolina and am now settled in the Baldwin City area. I have been keeping bees for the last several years and had up to 25 hives before moving back home.

In following newsletters, I will share more information on the NEKBA Military/Veterans Apprentices program and the connection between veterans and beekeeping that dates back to the end of World War I.

I hope everyone had a good holiday season and that you have your bee equipment ready for Spring.

Buck Bradley, Military/Veteran Appr. Liaison



Honey Plants

A few non-beekeepers have asked me about honey bee foraging practices and how it can have a negative effect on the native bee populations. I dismissed this notion. Certainly, there is enough forage for all bees? Native bees and honey bees focus on different plant species. The answer is not that simple. Those attending the Kansas Honey Producers spring meeting in March had the pleasure of hearing Dr. Keng-Lou James Hung from the University of Oklahoma speak about this issue. He has done extensive research on the different pollination habits of honey bees and native bee species, especially regarding apple pollination. His research showed that honey bees are great pollinators, but they are not good at cross pollinating apples. Native bees are far superior at this necessary requirement for pollinating apples.

Most of us would agree that we want to be good stewards and nurture wildlife. In many habitats there are plentiful resources for both honey bees and native bee populations. However, honey bees can monopolize available nectar and pollen sources if there are too many colonies in one location, especially in areas inhabited by at-risk native bee populations. Lack of diverse food sources or monocultures can also pose a problem. How do you know if there are native bee populations your honey bees could be putting at risk? This is a tricky question. The Kansas Department of Wildlife does not include any bee species on its Threatened and Endangered Species list. Dr. Hung recommends feeding honey bee colonies when natural food sources are limited or non-existent. That will reduce the stress on your colonies and surrounding native bee populations. He also suggests planting a variety of nectar and pollen sources in large clumps for honey bees and several varieties of various plants mixed in, in small quantities, for the native bees. Honey bees will overlook the single plant species and focus on the mass planting.

How many colonies should you put on an acre? There are a lot of variables and no easy answer to that question either. A helpful resource is the USDA publication *Insect Pollination of Cultivated Crop Plants* by S.E. McGregor, 1976. This book is out of print but available online at:

<https://www.ars.usda.gov/ARSUserFiles/20220500/OnlinePollinationHandbook.pdf>

The McGregor publication will give you an idea of how many colonies an agricultural crop will require for pollination, so you won't over populate the foraging area. If you find that your established colonies are consistently low on food stores and you must constantly feed, you might have too many colonies in one location.

Regarding bloom dates, the NE KS area is still well ahead of schedule by two- or three-weeks. Henbit and dandelion blooms were reported on March 12 and Wild Plum near Gardner on March 13. In my area, the Redbuds and Crabapples began blooming on March 18 followed by Purple Deadnettle on March 22. I would anticipate this accelerated blooming trend to continue. It is possible to start seeing the invasive Asian Bush Honeysuckle to start blooming early in April. K State and the Kansas Forest Service use the generic name Asian Bush Honeysuckle, but they are referring to three different varieties of Honeysuckle that originate from Asia. All are good sources of nectar and produce bright yellow pollen. We do have native Honeysuckles in Eastern Kansas. The native varieties are all vines and should not be eradicated along with the invasive bush Honeysuckle.

Continuing the early trend, do not be surprised if you see White Dutch Clover in mid-April or earlier. White Dutch Clover is a reliable source of nectar and greenish brown pollen. The bulk of our honey crops are typically the result of clover crops.

Those clovers are the White Dutch Clover, Yellow Sweet Clover, and White Sweet Clover. White Dutch is the first to bloom. Approximately two weeks later Dutch Clover will be followed by Yellow Sweet Clover and then in another two weeks, the White Sweet Clover. If your colonies are strong enough and ready, you will want to have your honey supers on when the clovers start to bloom.

Another potential for early bloom time is our native Black Locust. Black Locust typically blooms in mid-May. The premium light-colored honey Black Locust produces is worthy of harvesting separately from the rest of your honey crop. In addition to being an exceptional nectar producer, Black Locust is a great pollen producer. Look for yellow green pollen baskets.

Chokecherry blooms about the same time as Black Locust. It is a native understory tree that produces nectar and good quality pollen.

It is time for spring plant sales. A few in the area include Healthy Yards Expo, Saturday, April 13: 9 a.m. – 2 p.m., Shawnee Civic Centre, 13817 Johnson Dr., Shawnee, KS. This event has a lot of things to offer in addition to the plant sale.

Happy Apple Farm Native Plant Sale, Saturday, April 20: 10 a.m. – 2 p.m., 17524 178th St., Tonganoxie, KS. Happy Apple offers a wide selection of native plants, grasses, flowers, and shrubs. For more information, visit botanicalbelonging.org.

Shawnee Indian Mission Native Plant Sale, Saturday, April 27: 9 a.m. – 1 p.m., 3403 W. 53rd St., Fairway, KS. Missouri Wildflowers Nursery will be selling native plants for pre-order and onsite. A contribution from the sales will benefit the mission. Place pre-orders by April 23. For more information, visit shawneeindianmission.org.

Lenexa Farmers Market Native Plant Sale is on Saturday, April 27th from 8 a.m. – 1 p.m., 17201 W. 87th St. Pkwy., Lenexa, KS. Browse grasses, flowers, and other plants from local vendors.

For a quick list of which plants honey bees utilize for nectar and pollen visit:

https://en.wikipedia.org/wiki/List_of_Northern_American_nectar_sources_for_honey_bees

Jo Patrick, Honey Plants Chairman



The Kansas Honey Producers, Third Thursday, Making More \$\$\$ from Your Hive.

The Kansas Honey Producers Association- 3rd Thursday, Making More Money From your Hives, is at 7pm Central., Thursday, March 21st, 2024.

To register for the meeting and to get the link go to our website at www.kansashoneyproducers.org and click on the Making More \$\$\$ button-it will send you to a zoom program to register and you will immediately get the zoom link in your email. If you have registered before, you still may have to register again to get the link.

Upcoming programs:

April 18, 2024, 7pm Central – “Bee Huts”, presented by Joel Lanz.

May 16, 2024, 7pm Central – “Collecting Pollen and Preparing it for Sale”, presented by John Speckman.

If you have something that you would like to share with the group or have an idea for a future program, please call or text Joli at 913-593-3562 or email heartlandhoneyks@gmail.com.



Quilt Raffle

This year we again have a beautiful quilt for our quilt raffle. This quilt was donated by Jenny Latendresse, owner of the L'il Red Hen Quilt Shop at 7 South Agate St., Paola KS. She has donated several quilts over the years to be used to help fund both the Youth Scholarship program and our Apprenticeship for Veterans and Active-Duty Service members. Tickets are \$5 each or 5 for \$20. The drawing will be held at our Funday Expo on Saturday, June 1st. Tickets will be available at all of our in-person events and meetings plus at the Funday.



Queen Rearing Workshop with Gary Reuter May 10-12, 2024

8:30-5:00 (Friday and Saturday) 8:30-10:30 (Sunday)

Johnson County Extension Office, 11811 S. Sunset Dr., Olathe KS

Gary Reuter is an expert at queen rearing and has taught many classes with Dr. Marla Spivak at the University of MN. You will learn an introduction to Queen Rearing Systems and Techniques, learn the biology of queens and drones, prepare starter, mating and finisher colonies, hands on grafting and alternatives to grafting, queen mating. Beverages, lunch, and snacks are included. You'll get your own set of queen rearing equipment and receive a Successful Queen Rearing Manual.

Requirements: Must attend all 3 days and have 3 years' beekeeping experience.

If interested contact Joli Winer at 913-593-3562 or heartlandhoneyks@gmail.com or

Kristi Sanderson at 913-768-4961 or sandersonk09@gmail.com

The cost is \$250 a block of hotel rooms has also been set aside at your expense. Info upon registration.

NORTHEASTERN KS BEEKEEPERS' ASSOC. 2024 MEMBERSHIP APPLICATION

NAME _____
ADDRESS _____
CITY _____ STATE _____ ZIP+4 _____
PHONE _____ Email Address _____

NEKBA 2024 Bee FunDay early registration until May 28, 2024	\$55.00	_____
Membership Northeastern KS Beekeepers per year (July-Dec. \$12.50)	\$25.00	_____
Additional family members wanting voting rights \$1.00 per person	\$1.00	_____
Additional family member's name _____ (Youth Membership (18 years of age or under)	\$12.50	_____
Membership for Kansas Honey Producers Association	\$15.00	_____
American Bee Journal (discounted rate through association	1 year \$29.75	_____
Bee Culture Magazine (or subscribe online at www.BeeCulture.com)	1 year \$34.00	_____
Scholarship / Military/Veteran's Appr. Donation		_____
	Total	_____

Make checks payable to: NEKBA or Northeastern Kansas Beekeepers Assn.

Mail to: Robert Burns, 7601 W 54th Terr., Shawnee Mission, KS 66202 ph. 913-481-3504, rburnshoney@gmail.com

You may join, re-new, register, donate and pay online at www.nekba.org

MENTORING-SWEET PRAIRIE HONEY

Need help with your hives? -Spring inspections, installing packages, making splits, queen evaluation, diagnosis of pests and diseases, mite monitoring and treatment, etc. I can help you with your beekeeping needs! I am a certified master beekeeper with 30+ years of beekeeping experience. I will leave you with a written course of action after our session at your hives. Call or text 913-768-4961 or email Kristi Sanderson at sandersonk09@gmail.com for pricing and appointment times.

BEEKEEPERS.COM

Beekeepers.com (Jordy's Honey Company) in Lenexa, KS. Beekeepers.com is your only local full-service beekeeping store. We carry a full line of Beekeeping Supplies, Protective Clothing, Bottles, Bee Packages, Nucs and Queens. Visit our website Beekeepers.com, to view our entire line of beekeeping supplies. You can also shop in-person at our store in Lenexa. We ship queens directly to YOU! Order at QueenBees.com. Queens available March - October. Our hours are Monday-Friday 9:00-4:00, Saturday 9:00-12:00. You can find our honey at The Overland Park Farmers Market. **Robert Hughes**, 14054 W 107th St, Lenexa, KS 66215, 913-681-5777 or email Info@Beekeepers.com

COTTIN'S HARDWARE & RENTAL

Cottin's stocks a full line of beekeeping equipment year-round including items manufactured by Harvest Lane Honey, Little Giant, and Bug Baffler. Products include hives, supers, frames, foundations, extractors, tools, and protective apparel. We also stock a full line of Home Brewing Mead Making supplies. Located in Lawrence, KS at 1832 Massachusetts Street (South of Dillon's). We are open Monday - Friday 7:30 am - 6:00 pm, Saturday 8:00 am - 5:00 pm, and Sunday 10:00 am - 5:00 pm. You can follow us on Facebook, Instagram, and Twitter. Call us at 785-843-2981 or email us at hardware@sunflower.com.

CB'S HONEY

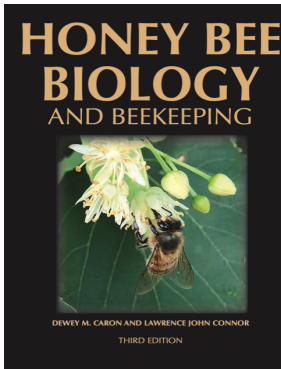
CB's Honey is now accepting orders for 5 frame nucs. Queens will be marked upon request. Don't delay as I make a limited number and sell out every year. Order your 2024 Nuc by completing form the [CB's Honey 2024 Nuc Order Form \(google.com\)](#) or via [CB's Honey | Facebook](#). Pure raw Kansas honey available in 5 gal buckets. Located just SE of Topeka. 4521 SE 61st Street, Berryton, KS 66409. Call or text Cheryl Burkhead at 785-224-9077 or email @ cherylbhoney@gmail.com.

CEDAR RIDGE BEES

5 Frame Nucs for Sale. We are your local Premier Bee Products Dealer specializing in plastic foundation made entirely in the U.S.A. We sell bucket feeders and other bee equipment. Call or text Philip Knaus at 785-581-4216 or contact us at cedarridgebeehives@gmail.com - Check out our bees and products at www.cedarridgebees.com Cedar Ridge Bees 585 N 500 Rd, Overbrook, KS 66524.

T CREEK BEES AND HONEY – Tecumseh/Berryton, KS

Tecumseh Creek winds its way through the home yard lending its name to the brand. Located between Lawrence and Topeka, T Creek offers 5-frame nucs, online honey sales, custom honey packing, wholesale delivery to the Topeka / Lawrence area, 5-gallon buckets of honey, and drop-shipping wholesale service to rural grocery stores and agritourism destinations. Visit www.tcreekbees.com Email: tcreekbees@gmail.com or find the bees on Facebook. Order 2024 5-frame nucs by visiting the website and completing the nuc order form. Owner: Tim Urich. LLC in the State of Kansas and licensed by Kansas Dept of Ag.



Honey Bee Biology and Beekeeping, Third Edition, Dewey M. Caron and Lawrence John Connor,

\$90 postage included. *This book should stay on the dashboard of every beekeeper's truck. It's that good, and that necessary. Kim Flottum, Bee Culture.*

This comprehensive textbook easily replaces many beginner books while adding comprehensive details of bee biology essential to becoming a successful beekeeper and student of the honey bee. First released in 1999, *Honey Bee Biology and Beekeeping* is widely accepted as a major textbook of Apiculture (beekeeping). Beekeepers and bee clubs use it to teach other beekeepers.

Universities use it to teach college students bee biology and beekeeping. It concentrates on the 'why', 'how' and 'when' of beekeeping. It explains bee and beekeeping basics in a manner meaningful to people who lack an extensive background in biology. Yet it is not over-simplified and provides a meaningful source of beekeeping information for the informed beekeeper. The Third Edition has been carefully edited, updated, and expanded to 480 pages. New chapters have been added, as have colorful new graphics and photographs. The Glossary has also been expanded. **Wicwas Press LLC Kalamazoo, MI 49001 - www.wicwas.com**

The Association does not endorse nor evaluate the advertisements, products, or services offered in the Buzzer.

Northeastern Kansas Beekeepers Association
Robert Burns, Treasurer
7601 W 54th Terr
Shawnee Mission, KS 66202-1129

Address Service Requested

Meeting

Monday, March 18, 2024

The Northeastern Kansas Beekeepers' Association

Membership is open to anyone interested in bees or bee culture. Dues are \$25.00 per calendar year (December 31-December 31) for the first in the family joining. Those joining in July or later in the year may pay \$12.50 for ½ year. Additional members of a family wanting voting privileges shall be assessed dues at \$1.00 per year. Youth memberships (18 years of age and younger) are \$12.50 per year. Please submit new memberships and renewals to the treasurer or on-line at www.nekba.org.

The Bee Buzzer is the official publication of the Northeastern Kansas Beekeepers' Association, Inc. and is published monthly. Commercial ads are accepted in the newsletter for a fee; non-commercial ads by paid members are accepted & are free.

The library of the association is free to all members. Books may be checked out at the meetings and kept for a period of 30 days. The bee publications, *The American Bee Journal* and *Bee Culture* can be subscribed to through the treasurer or on-line. The *American Bee Journal* is offered at a discount through the association only.

The Association meets each month, generally on the third Monday at 7:00 p.m. except during the months of January and July. Beekeeping classes will tentatively be held in January and February for 2024. This is a non-profit organization; elected officers serve without pay. Everyone is invited to attend the meetings. Check *The Bee Buzzer* or website at www.nekba.org each month for the actual date, time, and location. If the weather is bad, call an officer or check the website to find out if the meeting will be held or cancelled.

2024 Officers

President: Cheryl Burkhead , 4521 SE 61st St., Berryton, KS 66409 cbfritz@aol.com	785-224-9077
1st VP (Program Chair): Matt Brandes , 4741 Highway K 68, Wellsville, KS 66092 matthew@n523rv.com	913-706-3087
2nd VP (Librarian): Michael Hewitt , 9221 SE Berryton Rd, Berryton, KS 66409 garlicranch69@gmail.com	785-230-0827
3rd VP (Honey Plants): Jo Patrick , 611 E Sheridan St., Olathe, KS 66061 brian-patrick@sbcglobal.net	913-645-8947
Secretary: Elaine Ellenz , 17650 W 113 th St., Olathe, KS 66061 elaineellenz@gmail.com	913-515-1607
Treasurer: Robert Burns , 7601 W 54 th Terr., Shawnee Mission, KS 66202 rburnshoney@gmail.com	913-481-3504
Youth Scholarship Chair: Dale Spurlin , 24964 160 th Ct., Leavenworth, KS 66048 LightedPathHoney@outlook.com	913-775-0997
Military/Veteran Appr. Liaison: Buck Bradley , 11 E 900 Rd., Baldwin City, KS 66006 buckusmc00@hotmail.com	785-248-1005
Editor: Tim Marshall , 4736 Halsey St., Shawnee, KS 66216 flyinmonk@yahoo.com	816-392-6854
Special Events Coordinators:	
(Class): Kristi Sanderson , 1252 E Frontier Ln., Olathe, KS 66062 sandersonk09@gmail.com	913-768-4961
(Funday): Joli Winer , 19201 S Clare Rd, Spring Hill, KS 66083 heartlandhoneyks@gmail.com	913-593-3851
Webmaster: Robert Burns , 7601 W 54 th Terr., Shawnee Mission, KS 66202 rburnshoney@gmail.com	913-481-3504

Visit on-line at www.nekba.org. Save time. Join, re-new, or register.