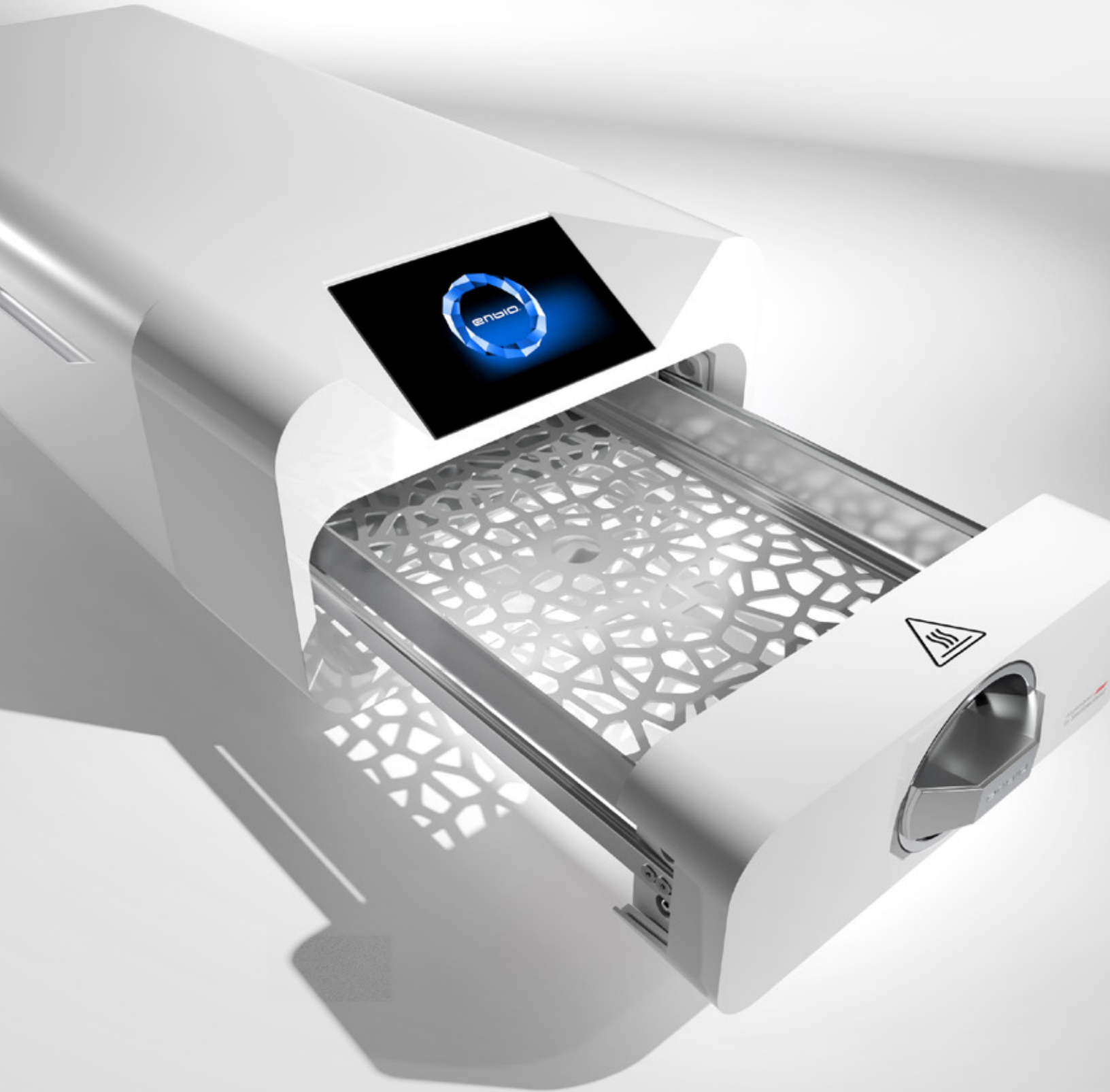


FDA Cleared

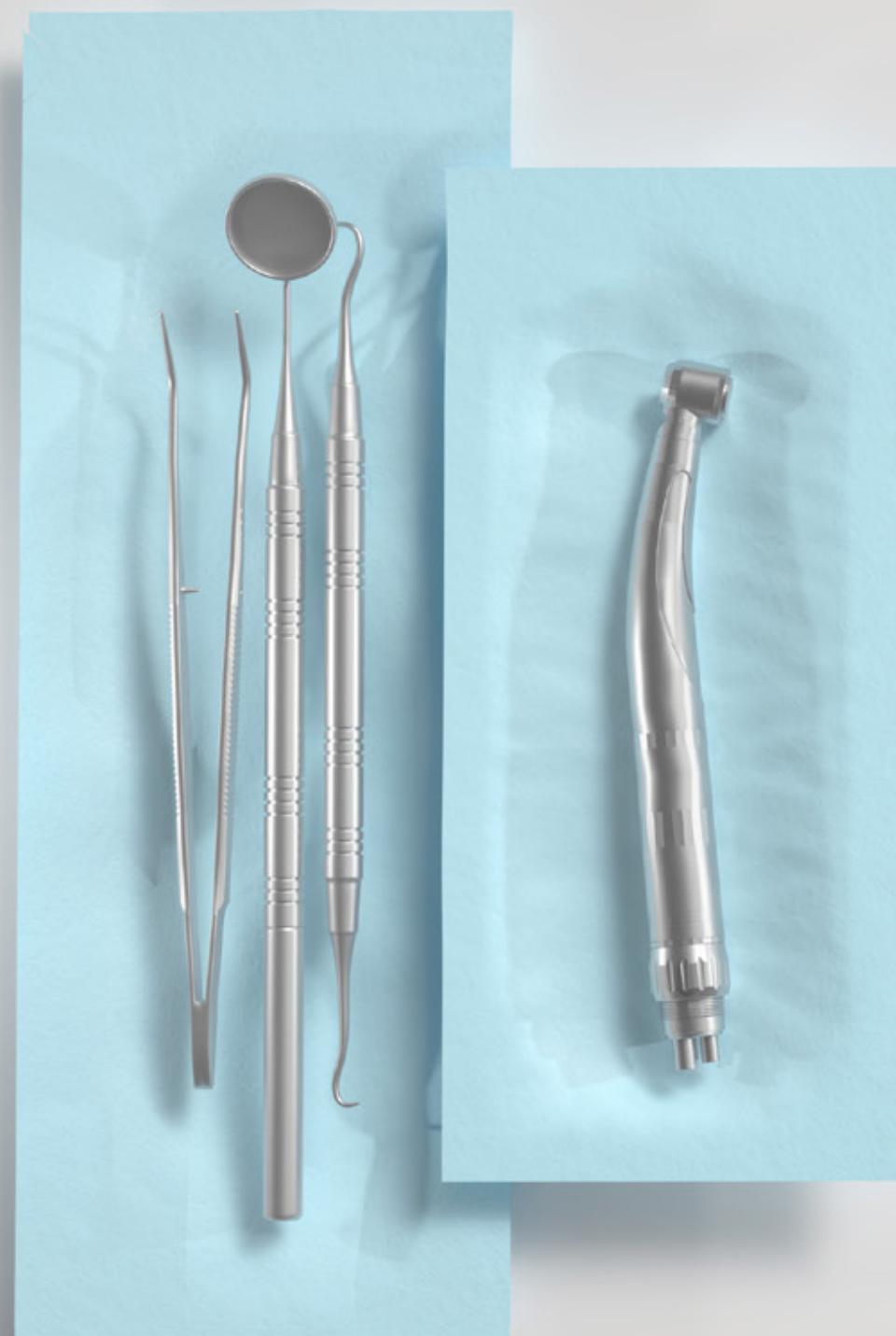
enbio.



**Enbio<sup>S</sup>**  
**World's fastest autoclave.**  
**Vacuum+drying.**

Designed  in Switzerland

# Bone dry pouches in no time.



**15 min**



**7 min**

Enbio can sterilize a load of wrapped instruments in just 15 minutes.

Full drying means that pouches are bone dry. Not somewhat dry.

In case of emergency, when you need an instrument sterilized for immediate use, FAST process does the job in just 7 minutes.

4 full cycles with drying per hour.



Enbio S is 6 times smaller and 3 times lighter than a typical vacuum autoclave. But when it comes to work efficiency, it keeps up the pace.

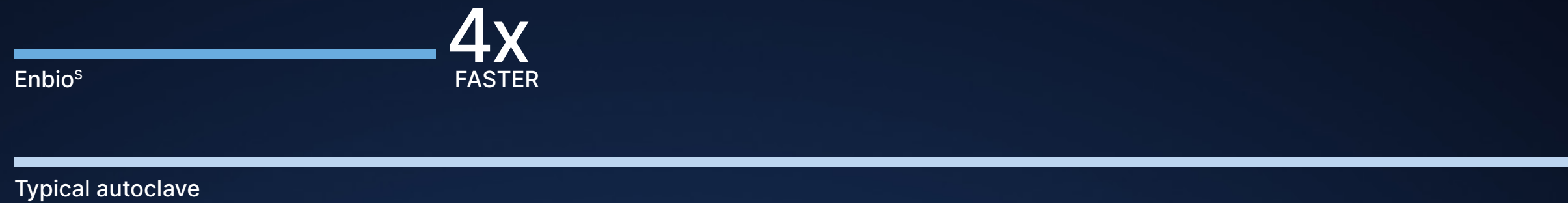
	Pouches / h	Instruments / h
Enbio <sup>S</sup>	<b>32</b>	<b>50</b>



# The new definition of sterilization speed.



Time is a relative value. It flows differently under different circumstances.  
But when you need to have your instruments ready, you need them, well, FAST.  
While other autoclaves might test your patience, Enbio bends the laws  
of physics to cut the waiting to the invisible.



Inaudibly silent.



Enbio autoclaves work unbelievably silent.  
Wherever you use it, nobody will notice it's working.

# Enbio<sup>S</sup>. Speedmaster.

Enbio S is compact to fit even a confined space. Unbelievably short process times will save your procedure in emergency, or allow sterilization of the instruments as you go, between patients.



**Vacuum**  
Pouches  
+drying

**FDA Cleared**

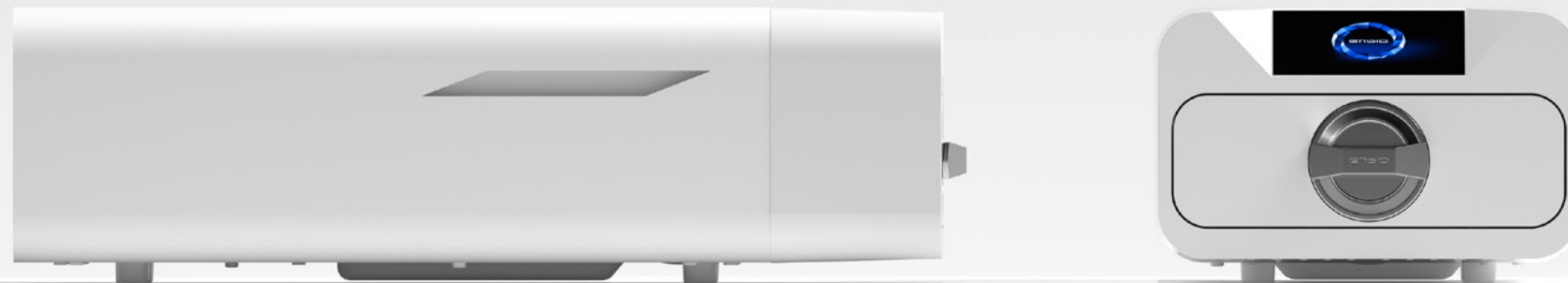
Unwrapped  
FAST / 134°C  
**7 min**

Wrapped  
Vacuum / 134°C  
**15 min**

Wrapped  
Vacuum / 121°C  
**45 min**



reddot design award  
winner



## Unit weight

**33 lb**

## Capacity

Max. packages amount (circa)	<b>8</b>
Max. recommended batch weight	<b>1,1 lb</b>
Process chamber volume	<b>2,7 l</b>

## Pressure & temperature

Working pressure	<b>2,1 Bar</b>
Max. pressure	<b>2,3 Bar</b>
Max. process temperature	<b>137°C</b>

## Dimensions

Width	<b>9.8 in</b>
Height	<b>6.3 in</b>
Depth	<b>22 in</b>

## Electrical

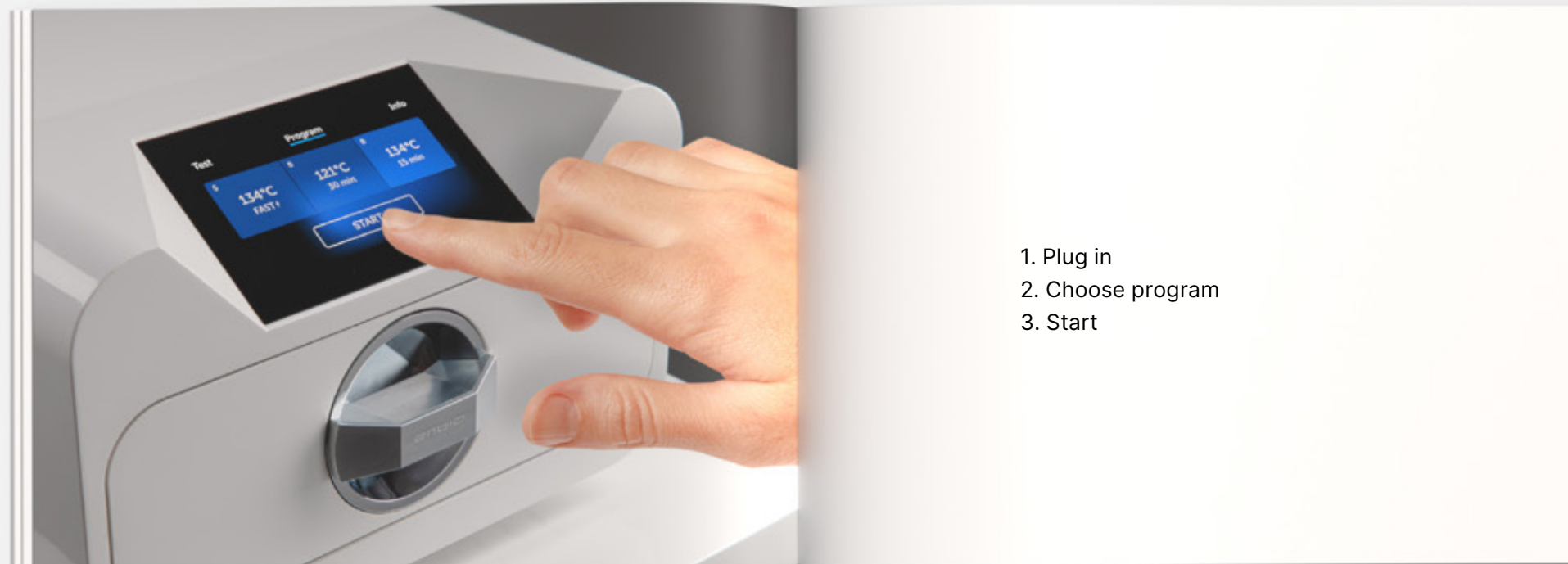
Power supply	<b>110V/60Hz</b>
Installed power	<b>3,23 kW</b>
Max. power consumption	<b>15 A</b>

## Misc

Ingress protection level	<b>IP20</b>
Data archiving	<b>USB stick</b>
Water conductivity*	<b>&lt; 15 µS/cm</b>

\* - demineralized water only

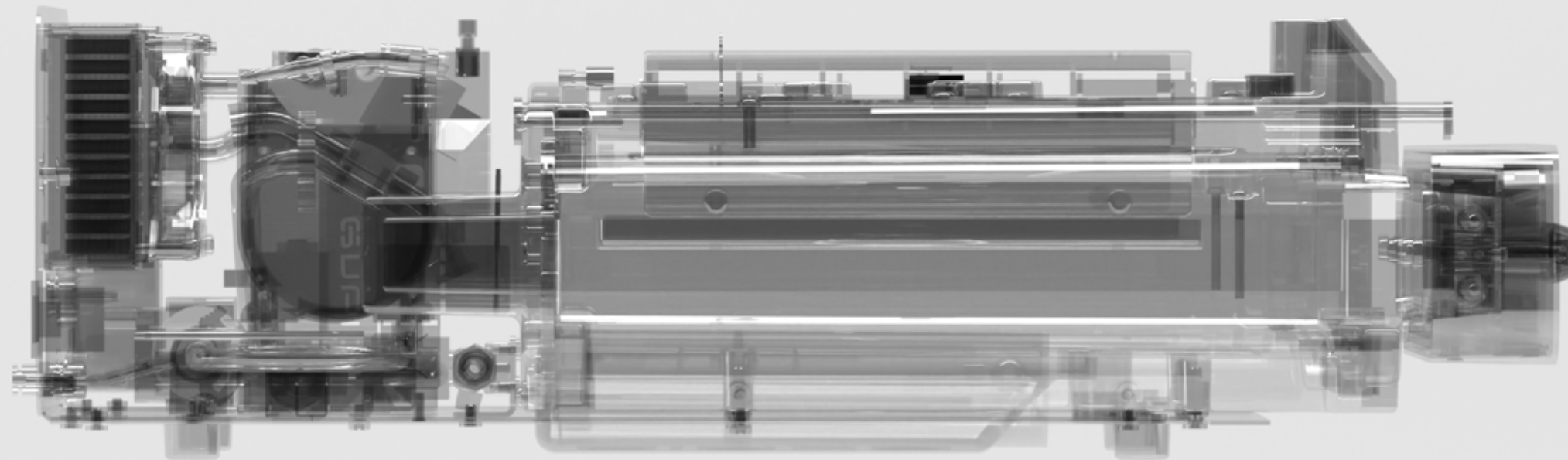
# Enbio user's manual



1. Plug in
2. Choose program
3. Start

# Enbio Care

Perfect technology meets perfect care.  
All Enbio devices are covered with world's unique  
warranty and care program, with backup device  
delivered to you for the time of repair.





## 20.000 units in 4 years.

In just 4 years, Enbio's worldwide community has grown to 20,000 users, who sterilize instruments in our autoclaves, for the complete safety of their customers and patients.





Designed  in Switzerland

## Worldwide presence.

Enbio autoclaves are manufactured in the EU and distributed globally through logistics centers covering Europe, North America and the Middle East.



**Enbio Group AG**  
Eichengasse 3, 4702 Oensingen  
Switzerland

**FDA Establishment Registration**  
Number: 3016777357

**US Distribution Center**  
**Enbio Corp.**  
3535 Gravel Springs Rd, Ext. 205  
Buford, GA 30519