

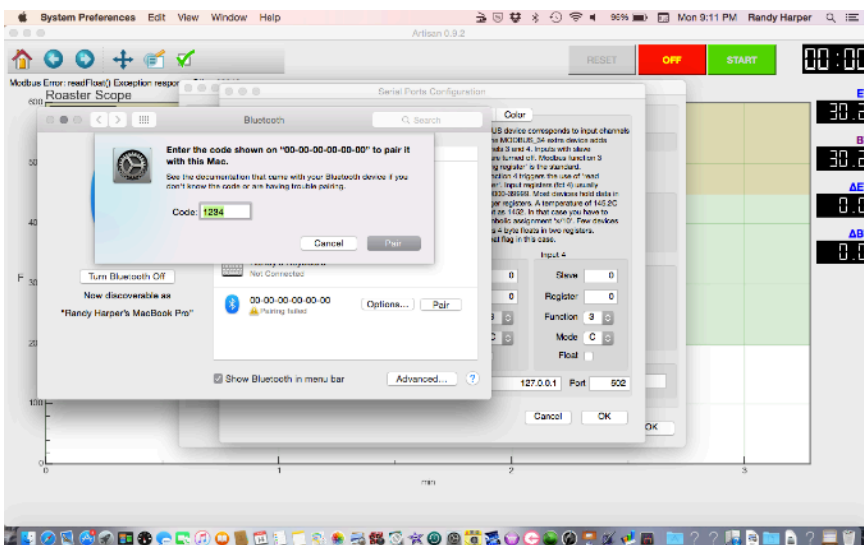
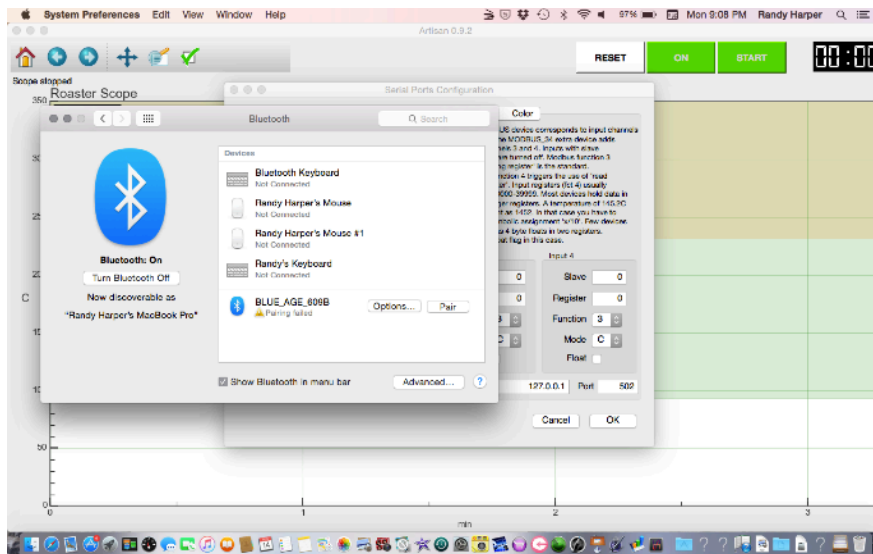
## BC BLUETOOTH OPTIONAL ARTISAN SETUP 2018

Coming in 2018 is the option to use Bluetooth connectivity to Artisan Software on a PC or Mac for Coffee Roasting Profiles on BC Roasters. For those that want such an option here is the general setup guide.

Choosing to have BT capability on your new 2018 BC roaster still allows you to use the traditional USB hookup if you prefer. This new BT setup allows both types or choices in connecting to Artisan.

### SETUP YOUR BLUETOOTH OPTION:

1. You must have the new BC Data Logger with optional BT chip
2. You must have a USB Dongle that is compatible with the BT Chip (V2.0 or a backwards compatible dongle)
3. TURN ON ROASTER
4. TURN ON YOUR COMPUTER AND GO TO THE BLUETOOTH COMMUNICATION SETTINGS
5. (EXAMPLE ON A MAC) SEARCH FOR BLUETOOTH DEVICES AND THE BLUE\_AGE\_609B device will appear
6. CLICK THE OPTIONS BUTTON BESIDE IT



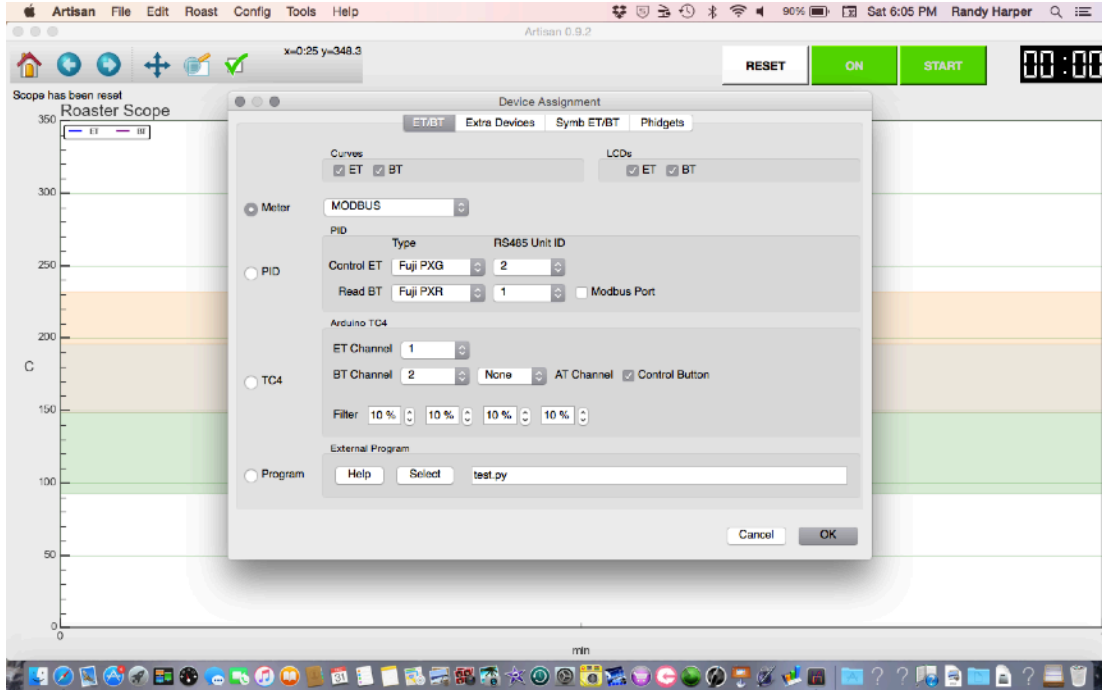
THIS WILL BRING UP THE CODE WINDOW TO PAIR DEVICE: TYPE IN THE CODE: 1234 then click pair:

# BC BLUETOOTH OPTIONAL ARTISAN SETUP 2018

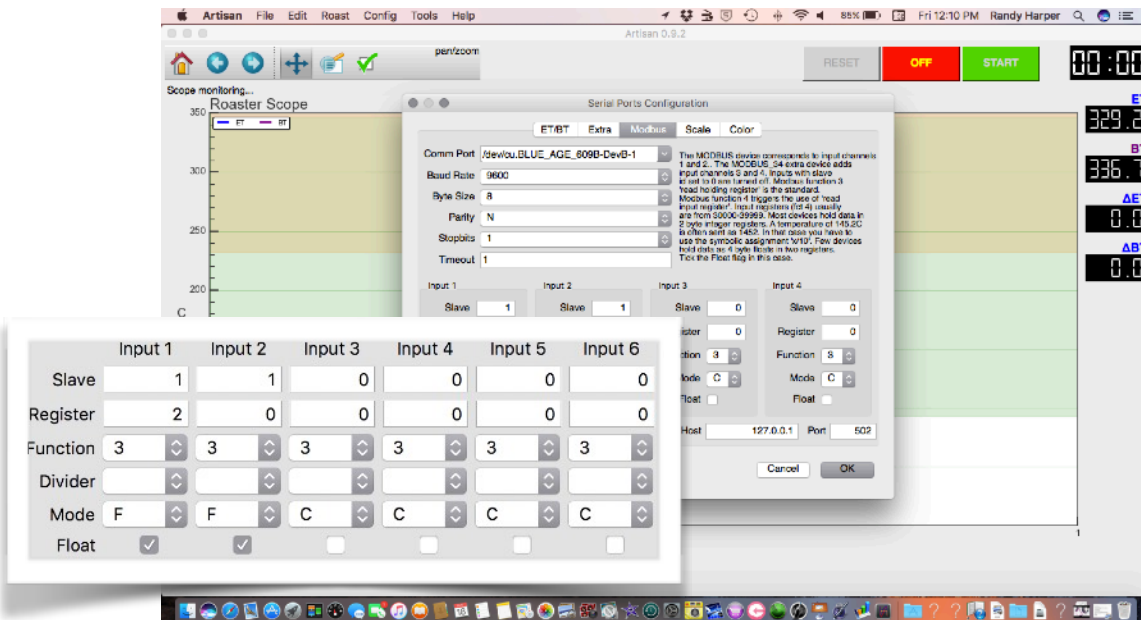
7. Once Paired you should be able to add it to your Artisan Setup as follows:

8. OPEN ARTISAN SOFTWARE

9. CLICK ON THE CONFIG MENU AT TOP OF PAGE: and set up using the MODBUS DEVICE with the CURVES ET & BT BOX CHECKED AND THE LCDs ET & BT BOXES CHECKED then click OK



10. Next the Serial Port screen should appear ( If not click on it to open from drop down menu of config button)



## BC BLUETOOTH OPTIONAL ARTISAN SETUP 2018

11. Be sure to setup just as on screen: Choose the comm port drop down menu to **BLUE\_AGE\_609B**. Next in the **Input 1** put the following numbers **Slave 1 Register 2**. On **Input 2** put **SLAVE 1 and Register 0**. Make sure all else looks as above.  
**CORRECTION: SET THE INPUT MODE ON 1 & 2 TO F (PLUS CLICK BOTH FLOAT BOXES)**  
... Then click OK

You can now click Artisan Software ON and follow the same setup guide as in the BC setup for using Artisan. If Artisan defaults to Celsius follow the guide to change it.

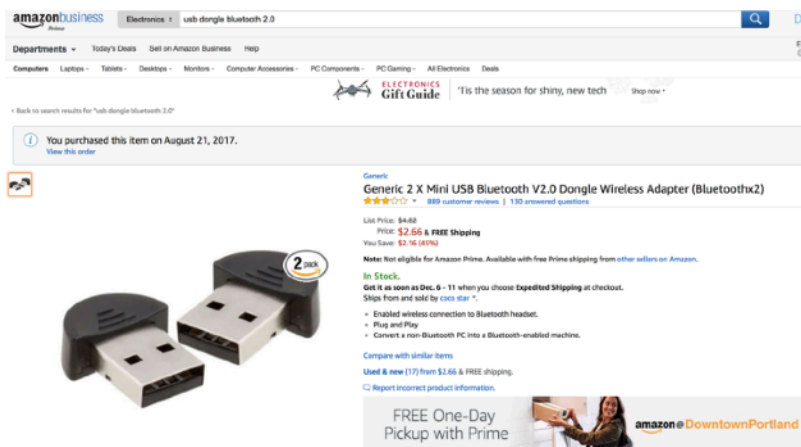
### SUPPORT:

**Remember if you have issues please email: tech@BuckeyeCoffee.com**. It is always best to setup unit using a USB cord first with the driver needed for your unit. Then after successfully operating with USB you can try the Bluetooth method.

**Also please remember** if you have issues this is not considered an urgent emergency. Do not expect our tech team to stay up or wake up in the middle of the night to try to solve any issues you are having with this. This is not an emergency issue. Sometimes the issue is with your computer not with our devices or dongles. We are not responsible to fix issues with your computer. If you want a tech to help you with computer issues we have contracted computer techs you can hire on an hourly basis to help you with software and hardware issues at their hourly rates.

YOUR COMPUTER MAY REQUIRE A USB DONGLE TO RUN BLUETOOTH. ONE MODEL THAT SEEMS TO WORK ON MOST PC COMPUTERS & MAC'S IS LISTED BELOW FROM AMAZON.COM: **(DONGLE MUST BE BLUETOOTH 2.0)**

[https://www.amazon.com/Generic-Bluetooth-Wireless-Adapter-Bluetoothx2/dp/B003VX3S3Y/ref=sr\\_1\\_6?ie=UTF8&qid=1512103245&sr=8-6&keywords=usb+dongle+bluetooth+2.0](https://www.amazon.com/Generic-Bluetooth-Wireless-Adapter-Bluetoothx2/dp/B003VX3S3Y/ref=sr_1_6?ie=UTF8&qid=1512103245&sr=8-6&keywords=usb+dongle+bluetooth+2.0)



The screenshot shows an Amazon Business product page for a "Generic 2 X Mini USB Bluetooth V2.0 Dongle Wireless Adapter (Bluetoothx2)". The product is shown in a black and white image. The price is listed as \$2.66 with free shipping. The product has a 2-star rating. The page also includes a "FREE One-Day Pickup with Prime" banner at the bottom.