



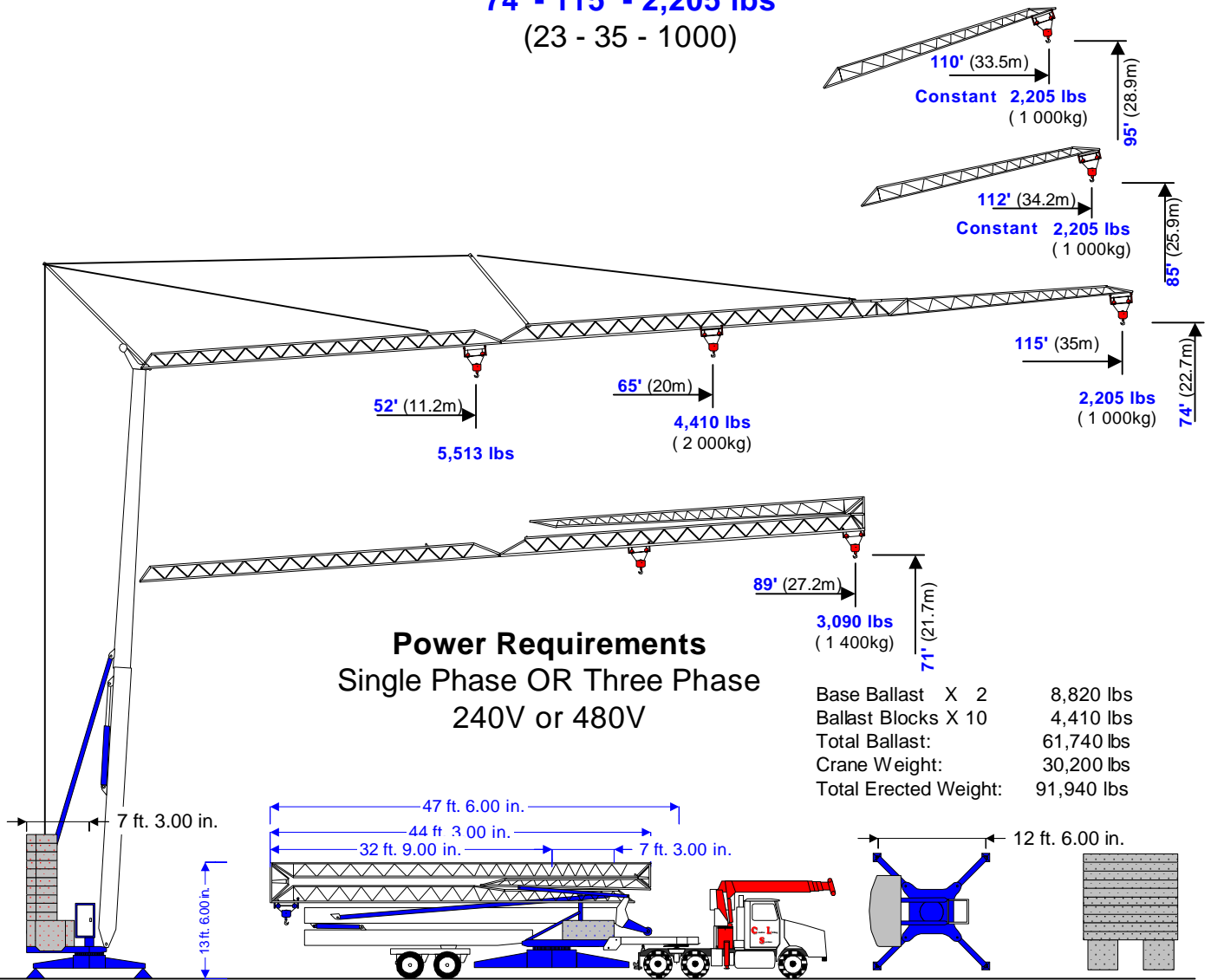
benazzato

Self-Erecting Crane

22115 (202)

74' - 115' - 2,205 lbs

(23 - 35 - 1000)



Power Requirements
Single Phase OR Three Phase
240V or 480V

- Base Ballast X 2 8,820 lbs
- Ballast Blocks X 10 4,410 lbs
- Total Ballast: 61,740 lbs
- Crane Weight: 30,200 lbs
- Total Erected Weight: 91,940 lbs

Hook	ft.	52	56	62	69	75	82	89	95	102	108	115
Radius	meters	15.9	17.0	19.0	21.0	23.0	25.0	27.0	29.0	31.0	33.0	35.0
Maximum	lbs.	5,513	5,094	4,498	3,991	3,594	3,263	2,977	2,734	2,536	2,359	2,205
Capacities	tonnes	2.50	2.31	2.04	1.81	1.63	1.48	1.35	1.24	1.15	1.07	1.00