

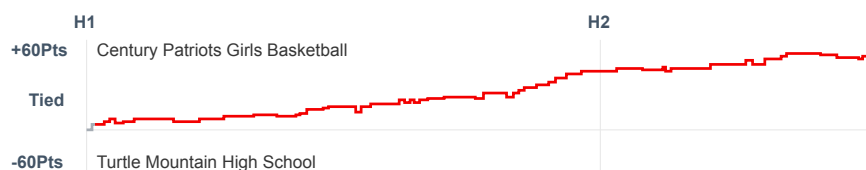
# Box Score Report

CHS @ Turtle Mountain - Dec 28, 2018 - W 91-32

## Period Stats

Team	1	2	Final
<b>CHS</b>	<b>55</b>	<b>36</b>	<b>91</b>
TMHS	16	16	32

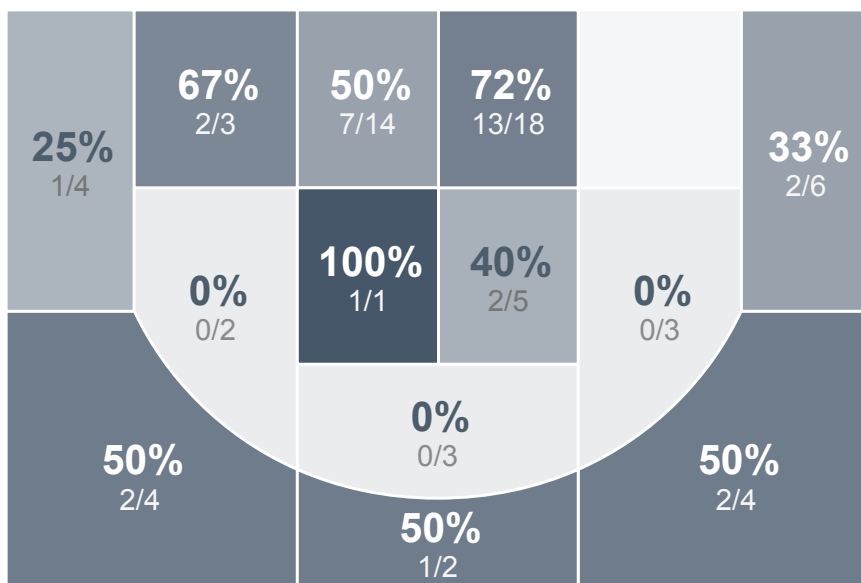
## Run Graph



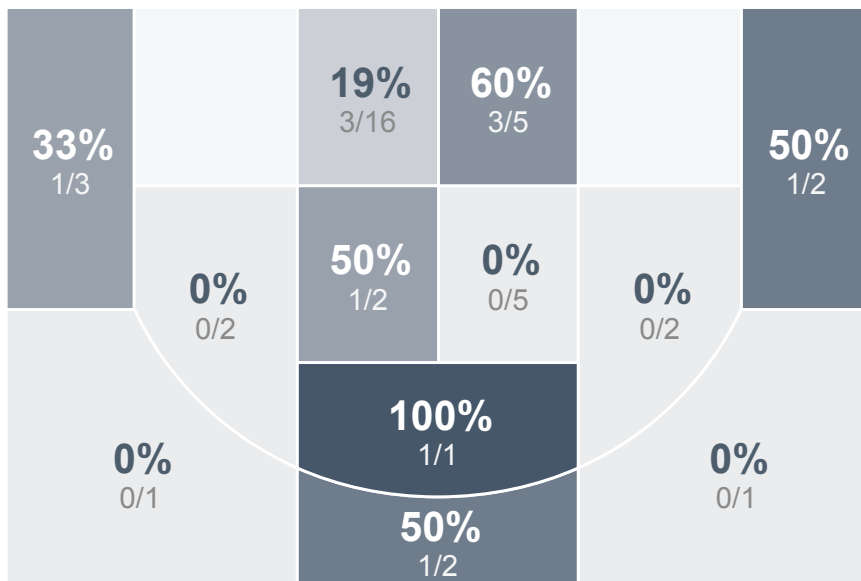
## Team Stats

	CHS	TMHS
Field Goal %	<b>48.6%</b>	26.2%
Effective Field Goal %	<b>54.3%</b>	29.8%
2FG Made/Attempted	<b>26/50</b>	8/33
2FG%	<b>52.0%</b>	24.2%
3FG Made/Attempted	<b>8/20</b>	3/9
3FG%	<b>40.0%</b>	33.3%
FT Made/Attempted	<b>15/21</b>	7/16
Free Throw Percentage	<b>71.4%</b>	43.8%
Points Per Possession	<b>1.28</b>	0.48
Transition Points	<b>10</b>	3
Points Off Turnovers	<b>31</b>	5
Second Chance Points	<b>28</b>	1
Points in the Paint	<b>46</b>	14
Offensive Rebounds	<b>21</b>	5
Defense Rebounds	<b>30</b>	17
Assists	<b>25</b>	5
Deflections	<b>10</b>	3
Steals	<b>5</b>	4
Blocks	<b>2</b>	3
Turnovers	<b>12</b>	<b>22</b>
Personal Fouls	<b>13</b>	<b>15</b>
Charges Taken	<b>0</b>	0

## Century Patriots Girls Basketball



## Turtle Mountain High School



## Century Patriots Girls Basketball's Player Stats

Name	Pts	FG	3FG	FT	+/-	MINS	OREB	DREB	AST	DEFL	STL	BLK	TO	FOUL	CHG
#3 Ella Fridley	6	2/8	2/6	0/0	+ 23	18	5	2	1	1	1	0	2	1	0
#5 Megan Klein	2	1/2	0/0	0/0	+ 5	4	0	1	0	0	0	0	0	0	0
#10 Mya Klein	5	2/4	0/1	1/1	+ 31	19	2	4	5	1	0	0	3	3	0
#11 Delani Clarke	3	1/1	1/1	0/0	+ 5	4	0	1	0	0	0	0	0	0	0
#13 Maci Walz	0	0/1	0/0	0/0	+ 5	4	0	0	1	0	1	0	0	0	0
#14 Chloe Markovic	9	3/5	1/1	2/2	+ 45	31	3	5	5	4	1	0	0	0	0
#15 Sara Rudolph	5	1/2	0/0	3/4	+ 24	14	2	1	0	1	0	0	0	1	0
#21 Hailey Fletcher	6	3/5	0/0	0/0	+ 29	17	1	3	1	0	0	0	1	0	0
#23 Julia Fitterer	5	1/3	1/2	2/2	+ 36	20	1	3	7	0	0	0	3	2	0
#30 Ashton Kinnebrew	6	2/6	0/1	2/2	+ 32	18	4	2	3	1	0	0	1	2	0
#32 Lauren Ware	22	10/18	0/1	2/5	+ 35	22	2	5	1	0	0	2	2	1	0
#40 Lilly Keplin	22	8/15	3/7	3/5	+ 32	19	1	2	1	2	2	0	0	3	0

## Turtle Mountain High School's Player Stats

Name	Pts	FG	3FG	FT	+/-	MINS	OREB	DREB	AST	DEFL	STL	BLK	TO	FOUL	CHG
#5 Tambraye Trottier	2	0/3	0/0	2/8	- 43	30	1	4	1	0	1	0	3	0	0
#10 Breah Crissler	0	0/1	0/0	0/0	- 26	13	0	1	1	0	0	0	2	2	0
#11 Erin Keplin	8	3/9	1/2	1/2	- 32	23	0	1	0	0	2	0	0	1	0
#15 -	1	0/0	0/0	1/2	- 11	5	1	1	0	0	0	0	0	0	0
#20 -	8	3/11	1/2	1/2	- 22	21	1	2	0	2	0	1	4	4	0
#22 -	0	0/1	0/1	0/0	- 19	8	0	0	0	1	0	0	2	0	0
#23 -	0	0/1	0/0	0/0	- 11	5	0	0	0	0	0	0	1	2	0
#24 -	3	1/4	1/3	0/0	- 41	26	0	1	0	0	0	1	1	0	0
#30 Kobi Keplin	6	2/8	0/0	2/2	- 48	33	1	4	3	0	1	1	7	4	0
#32 -	0	0/1	0/0	0/0	- 14	4	0	1	0	0	0	0	0	0	0
#33 -	4	2/3	0/1	0/0	- 30	11	1	1	0	0	0	0	2	2	0
#42 -	0	0/0	0/0	0/0	+ 2	0	0	1	0	0	0	0	0	0	0