

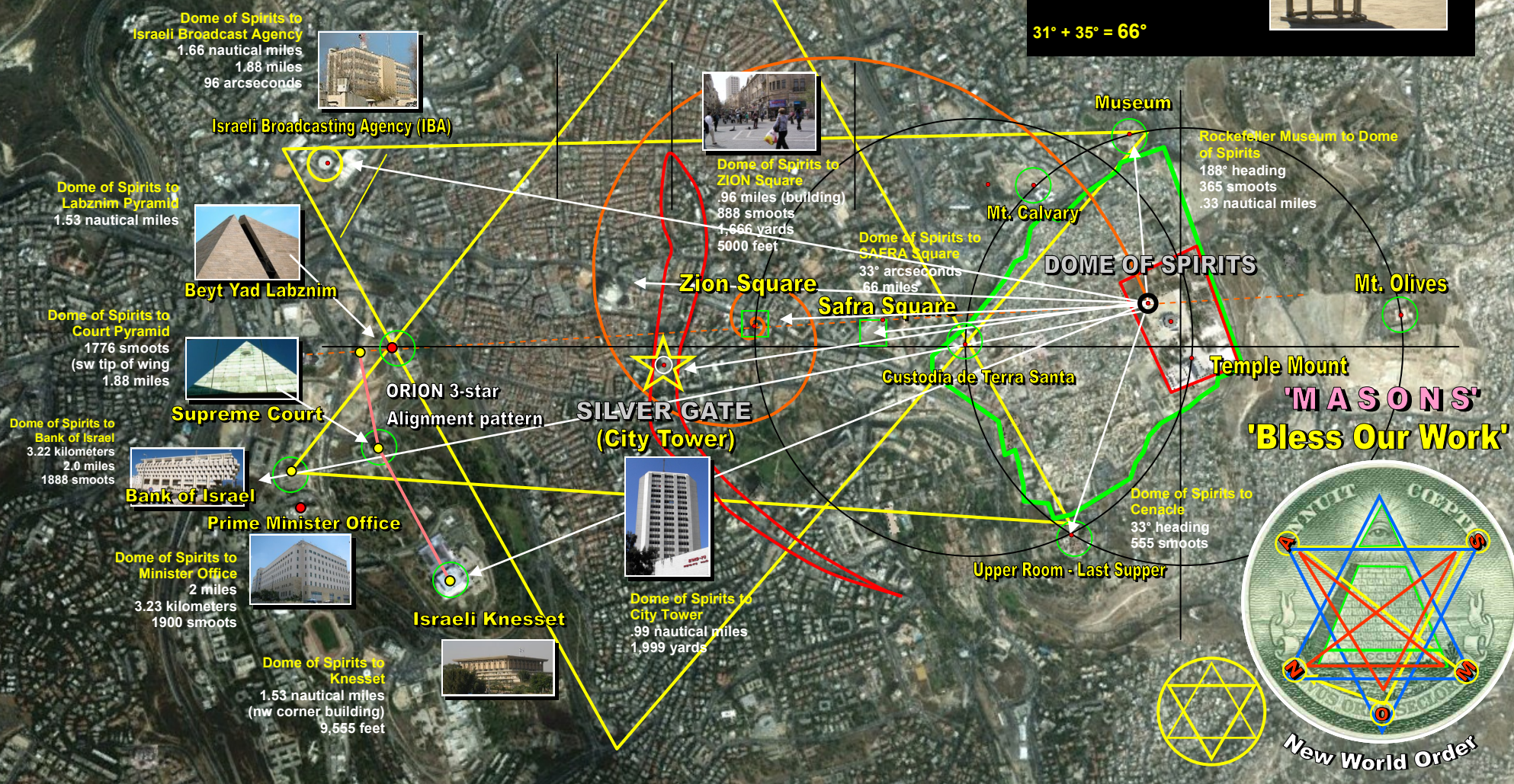
THE PYRAMIDS OF ZION



DOME OF SPIRITS
Coordinates:

31°46'43.50"N (sum =26)
35°14'05.44"E (sum =26)

31° + 35° = 66°



The Pyramids of Zion chart series approximates the GPS distances from the Dome of the Spirit. This topographical study strongly suggests that the Dome of the Spirits is where the actual spot was and is and will be for the Temple of YHWH. It is from this precise place that very unique distance number values occur that in some instances repeat in difference values. What the chart also illustrates is the prominent correlation to the ORION star constellation pattern that Jerusalem is laid out with. The Gates correspond to the Stars of ORION and the Ecliptic with the positioning of the Silver Gate or 'Gate of Man' is directly correlating to the City Tower. This prominent location has some amazing distance numerical values that will also be highlighted in the subsequent charts. From the Dome of the Spirits, the distances are targeted to key buildings and points of great importance to modern Israel. From this angle and perspective a huge hexagram corresponds to the key points of power of the Nation, be they, media, banking, social, political and religious. The Hexagram's center line runs from the Dome of the Spirits and intersects the Safra Square, Zion Square and terminates at the Pyramid of the area called Beyt Yad Labznim. This pyramid along with the one of the Supreme Court along with the Knesset approximated also the ORION 3-star belt alignment. There are actually 3 pyramids in this area that correspond to the Pyramids of Giza complex, 1) the Labznim, the Supreme Court and the Bank of Israel, which is an occultic upside-down pyramid partial in design though.

THE PYRAMIDS OF ZION

Bank of Israel to City Tower
 .72 nautical miles
 270° heading
 1.33 kilometers

To ZION Square
 1.72 km
 999 smoots

To Dome of Spirits
 1.72 nautical miles
 2.0 miles
 1888 smoots

To City Tower 'Star-Gate'
 144,000 centimeters
 (west end of building)
 .9 miles
 .77 nautical miles

Bank of Israel to Labznim Pyramid
 555 meters
 .55 kilometers
 666 yards
 234° heading



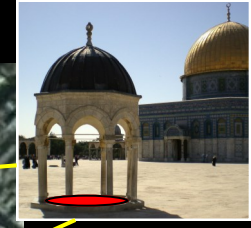
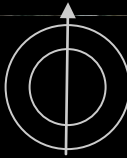
Beyt Yad Labznim From Court Pyramid to Labznim Pyramid
 1,222 feet
 13 arcseconds
 16,666 inches

Court Pyramid to Jewish Center City
 .90 kilometers
 979 yards
 .48 nautical miles (19-48)
 .55 miles
 888 meters
 .88 kilometers
 188° heading

DOME OF SPIRITS
Coordinates:

31°46'43.50"N (sum =26)
 35°14'05.44"E (sum =26)

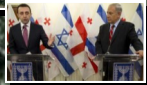
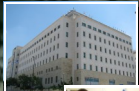
31° + 35° = 66°



Bank of Israel



Supreme Court Pyramid



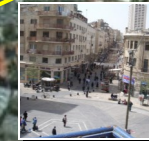
From Court Pyramid to Bank of Israel
 9 arcseconds
 166 smoots
 .16 nautical miles
 .19 miles

J. Trumpeldor

SILVER GATE
 (City Tower)



Zion Square



From Court Pyramid to ZION Square
 144,000 centimeters
 1.44 kilometers
 88° heading
 .9 miles
 .77 nautical miles

From Court Pyramid to P. Minister Office
 365 yards
 333 meters
 .33 kilometers

From Dome of Spirits to Isaiah Dome
 99 arcseconds
 1.6 miles
 1.9 miles
 3,363 yards

Antiquities Authority

Israeli Kneset



From Court Pyramid to Kneset
 .33 miles
 166° heading
 .52 kilometers

From Court Pyramid to Isaiah Dome
 .55 miles
 188° heading
 .48 nautical miles
 .88 kilometers
 88,999 centimeters



Dome of the Scroll



Court Pyramid to Isaiah Dome
 .90 kilometers
 979 yards
 .48 nautical miles (19-48)
 .55 miles
 888 meters
 .88 kilometers
 188° heading

'M A S O N S'
'Bless Our Work'

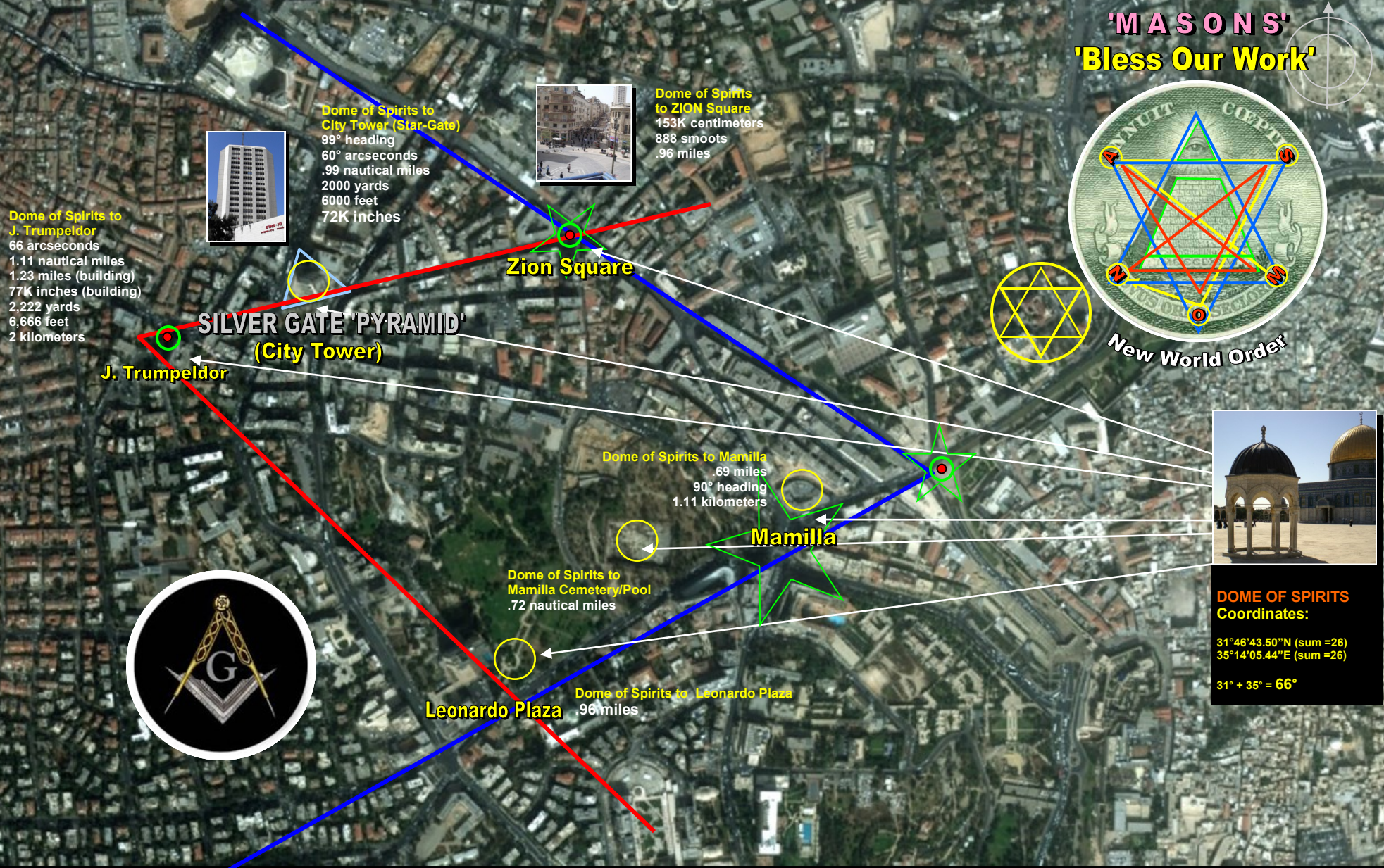


2 of 5
 © Composition & Some Graphics by
LUIS B. VEGA
 vegapost@hotmail.com

FOR ILLUSTRATION PURPOSES ONLY

The various powers that rule the financial, political and social venues of Israel have their buildings marked off by sacred geometry that is mathematically in correspondence to the Dome of the Spirits. There are various pentagrams, triangles or pyramids configured that are lined-up from the Temple Mount and the surrounding City of Jerusalem. The overall pattern corresponding to the ORION constellation and the Giza Pyramids. These same patterns and numerical values appear to be constants with a particular spiritual, occultic and/or esoteric meaning behind such fixed points, geometrically. This is not to infer that the Holy Temple of YHWH is associated with these Luciferian ley-lines that were subsequently added as the city has grown from outside the Old City limits but that such entities have sought to usurp the energies and power of such a divine and holy geometry that is divinely ordered and laid out. These same principles and associations are seen in many world capitals such as London where the ley-lines are tied to the Royal Palaces and the Bank of England. The Bank of England's main building is actually a special pyramid of 'time' based on GPS latitude readings. This same principle is found here in Jerusalem with the City Tower that in actuality is a microcosmic of a time-machine or 'clock' when distanced from the Dome of the Spirits. The City Tower corresponds to the Silver Gate just above the constellation ORION in the heavens. It is interesting that the City Tower itself is gray or silver-ish in color; it dominates the Jerusalem skyline. The 'Masters' of the Pyramids seek to harness the energies of such ley-lines to help them dominate all aspects of the political, social, religious and judicial monopoly of power in the world as according to the Bible, Jerusalem is the geographic center of the World.

THE PYRAMIDS OF ZION



The chart above illustrates some unique distances in numerical values based on satellite GPS coordinates in relation to certain major geographic landmarks of the city of Jerusalem. In no other reference point, other than the Dome of the Spirits do these headings, angles, and numerical values occur. The numbers are rounded off to the nearest whole number. Based on the geometry and distances from the Dome of the Spirits, it is highly likely that this spot is indeed the place of the Holy of Holies where YHWH's presence once was in the form of the Shekhinah Glory. It would stand to reason that if that is the case then measurements radiating from this precise location would have significant geometric and numerical value to certain locations based on sacred proportions such as phi. Moreover, it can be argued that the circumference that encompasses the whole of the city limits that is based off the Great Pyramid of Giza is thus also a 'clock', prophetic in this case. These charts in the ORION series seek to show that not only is the Dome of the Spirits in fact where the 3rd Temple will be built but that in relation to the ORION Silver Gate distance, the Silver Gate which is laid out in a pyramid pattern that could be providing the geometric clue of the culmination of all Biblical prophetic time as it relates to the Last Days in Israel's rebirth and the Return of their True Messiah, Jesus Christ.

THE PYRAMIDS OF ZION

DOME OF SPIRITS

Coordinates:

31°46'43.50"N (sum =26)
35°14'05.44"E (sum =26)

31° + 35° = 66°



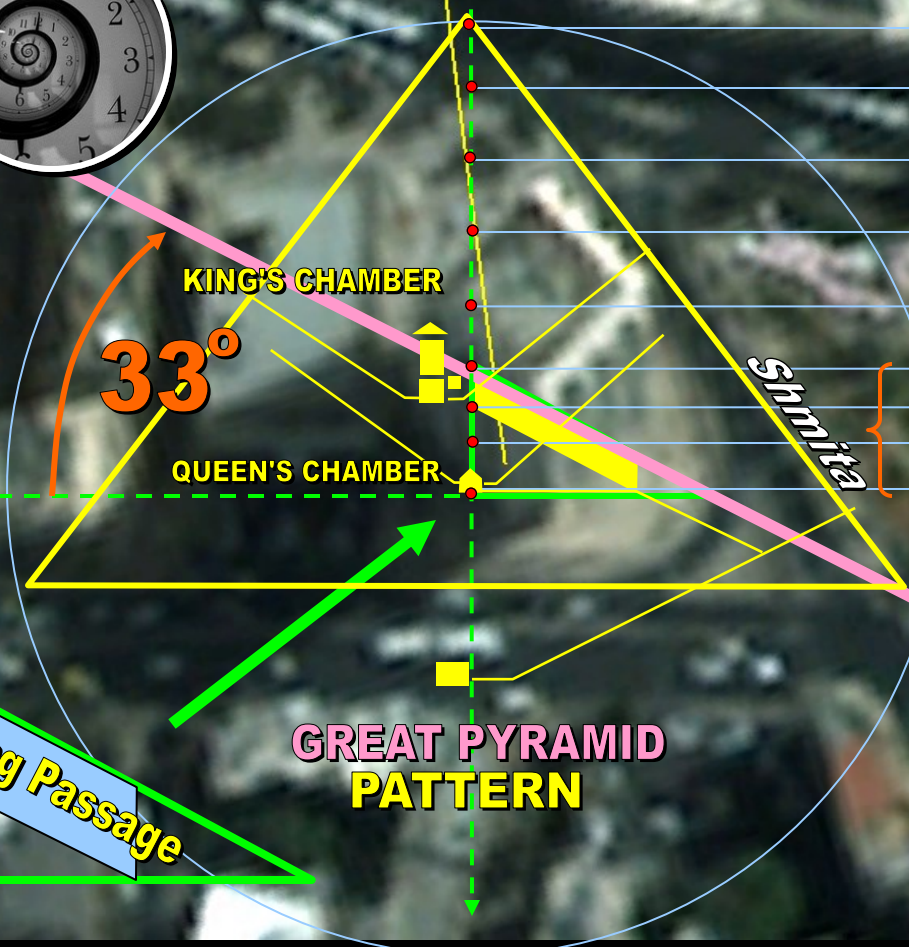
SILVER GATE 'PYRAMID' City Tower

Coordinate - Year Theory

from Dome of Spirit
in YARDS

1.11 nautical miles to Silver Gate
GOLDEN GATE

- 1947
- 1956
- 1967
- 1980
- 1994
- 2001
- 2008
- 2015
- 2022



KING'S CHAMBER

33°

QUEEN'S CHAMBER

Shmita
7
7
7

GREAT PYRAMID
PATTERN

Ecliptic

Silver Gate

72°

- 2001
- 2008
- 2015
- 2022

Ascending Passage

4 of 5

© Composition & Some Graphics by

LUIS B. VEGA

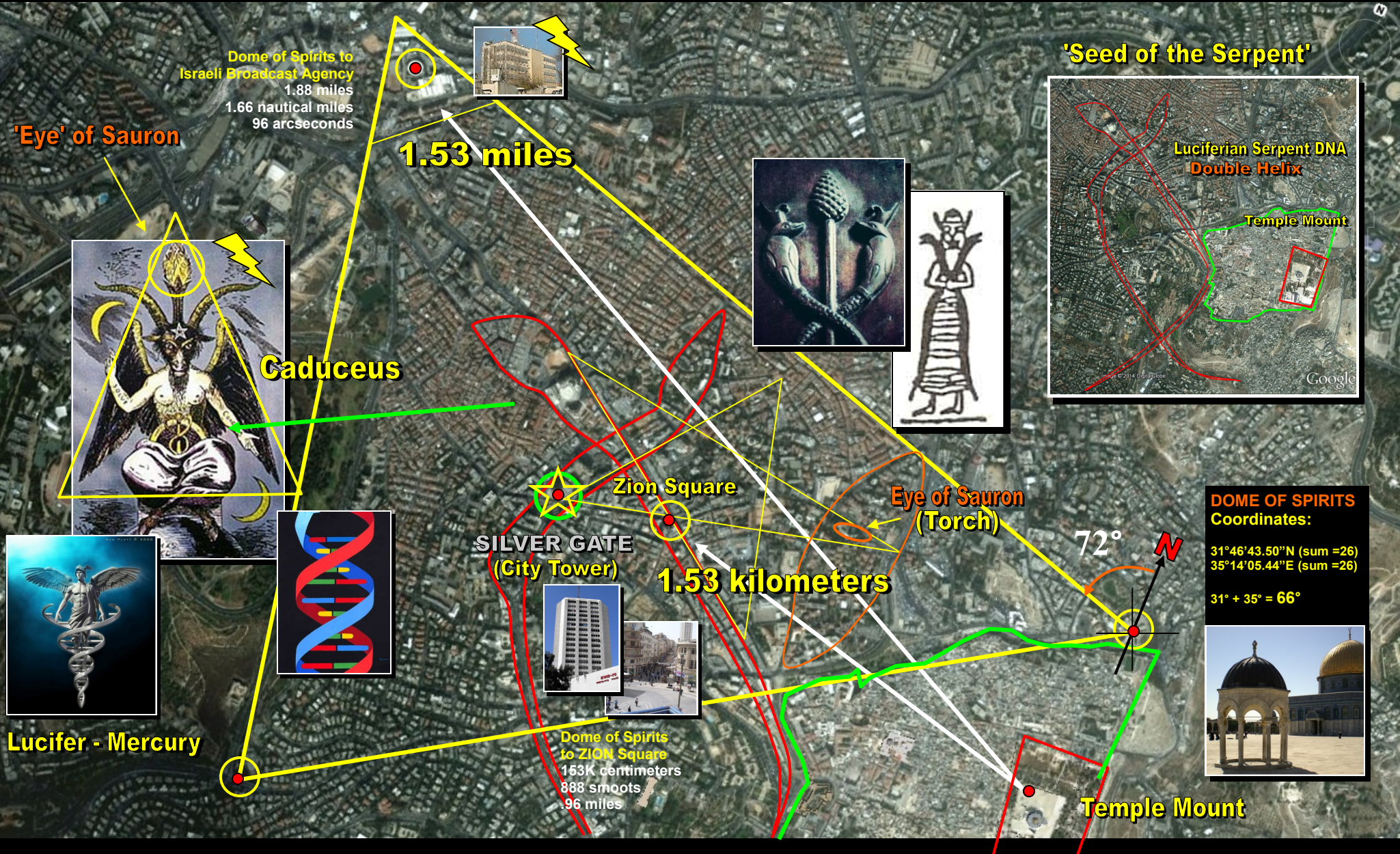
vegapost@hotmail.com

FOR ILLUSTRATION PURPOSES ONLY

The chart above illustrates some unique distances in numerical values based on satellite GPS coordinates in relation to the City Tower of Jerusalem that corresponds to the Silver Gate of the ORION pattern overlaid upon Jerusalem. From the Dome of the Spirits where these charts speculate the Holy of Holies is, to the start of the apex of this area give some unique numerical value that perhaps is a prophetic clock 'countdown' of sorts to the coming of the True ORION. This is he Messiah Jesus Christ to whom the City of Jerusalem belongs to and not the usurper false 'masters of the pyramids' who seek to occupy the Earthly ZION as much as they do the Heavenly One. What is also profound about this assertion is that the Ecliptic line runs the length and same angle as the Ascending Gallery at a 33° angle from the base of the pyramid. In essence this 'pyramid' configuration of the Silver Gate or Gate of Man is a prophetic time-clock. The apex starts out with 1947/48, which is when the State of Israel was created. From that point of reference, the length of the center line also correlates to the prophetic years that are sectioned off in 7-year intervals. Based on this notion of the coordinate-to-year theory, the height of the Ascending Gallery starts with the series of 7-year countdown that also is tied to the Jewish law of return called the Shmitah. If such a theory is plausible and possible, then Biblically speaking the grid at this particular spot will the coming of Jesus Christ at the end of this timing sequence. This is not a prediction but an illustration of a possibility based on satellite GPA correlation in relation to the ORION pattern of Jerusalem.

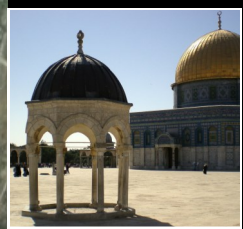


THE PYRAMIDS OF ZION



DOMES OF SPIRITS Coordinates:

31°46'43.50"N (sum =26)
 35°14'05.44"E (sum =26)
 31° + 35° = 66°



The chart above illustrates some unique distances in numerical values based on satellite GPS coordinates in relation to the pyramid construed from the Israeli Broadcasting Agency. This location is serving as the apex or 'capstone' of the 'great' pyramid with its base as the Rockefeller Museum on one end. The key features that this chart is highlighting is the distance to the ZION Square to the IBA, both have an identical numerical value of 1.53. This number is Biblical as in the 153 fish that were caught in the net Jesus instructed His Disciples cast on the other side when the Disciples had 'gone fishing' after the Resurrection of the Messiah. The value of 153 is a function of the Vesica Pisces. What this chart also illustrates are the double entwined snakes that allude to the DNA strand of life. Both of these 'serpent's have at its core the City Tower that correlates to the Silver Gate above ORION's arm and the ZION square. The 'snake' that has the Silver Gate pronounced is shown on other charts of this Gates of Orion series that corresponds to the Ascending Passage of the Great Pyramid layout when superimposed on the map of Jerusalem. The double-helix snakes connote the Caduceus of Mercury or that which Baphomet upholds. This is none other than a masked adoration to Lucifer who is trying to usurp the True ZION of YHWH in Heaven and on Earth. The Luciferians are bent on enthroning their Prince that shall come to the City like Titus and encamp in the Holy Zion of GOD on Earth. Their quest is to bestow the Throne of YHWH, the Holy of Holies to the coming AntiChrist and Lucifer by default.