



# JABIRU ENGINE PARTS BOOK



## 3300 SERIES

### ROLLER CAM LIFTER

**Applicable to Jabiru 3300 Models from S/N 33A2539 onwards**

Jabiru Aircraft Pty Ltd ACN 010 910 077

PO Box 5186 Bundaberg

Australia 4670

Australia: Phone 07 4155 1778

Fax 07 4155 2669

International: Phone + 61 7 4155 1778

Fax + 61 7 4155 2669

Email: [info@jabiru.net.au](mailto:info@jabiru.net.au)

Web: [www.jabiru.net.au](http://www.jabiru.net.au)

Revised November 2015



Please fill in your engine and aircraft details for future reference.

Engine Serial #: .....

Aircraft Type: .....

Model: .....

Serial #: .....

Registration #: .....

Note:

1. Not all parts are illustrated
2. All efforts are made to ensure accuracy at the time of publication, if you find any discrepancies, or have any questions about the contents of this publication please contact Jabiru Aircraft Pty Ltd.
3. All quantities are per engine unless stated otherwise.

4. When ordering parts always quote engine serial number and any upgrades carried out on the engine, as well as item number, part number, description, page number and issue number. This complete information will ensure Jabiru Aircraft Pty Ltd supply the correct part.



## **Engine Parts Catalogue Index**

Figure 1 – Crank & Crankcase Assy 7/16 Studs.....	4
Figure 2– Valvetrain & Head Assembly Roller Cam Lifter .....	5
Figure 3 – Cylinder Head Assy .....	6
Figure 4 – Head Valve Guides & Seats 3.3L .....	7
Figure 5 – Barrel Piston & Conrod Assembly .....	8
Figure 6– Timing & Distributor Assembly.....	9
Figure 7 – Oil Relief Valve Filter & Adaptor .....	10
Figure 8 – Flywheel Assembly .....	11
Figure 9 – Flywheel & Alternator Assembly .....	12
Figure 10 – Induction Assy 3300 Ser III.....	13
Figure 11 – Exhaust Assembly Tractor.....	14
Figure 12 – Drawing 4A159A0D Dipstick Assembly .....	15
Figure 13 – Starter Motor Assembly .....	16
Figure 14 – Sump Assembly & Rear Plate .....	17
Figure 15 – Fuel Pump Assembly & Mounting.....	18
Figure 16 – Carburetor Assembly .....	19
Figure 17 – Oil Pump Assembly .....	20
Figure 18 – Prop Flange Assembly .....	21
Figure 19: Miscellaneous Electrical .....	22
Figure 20 – Scimitar Propeller Assembly.....	23
Figure 21 - Propeller Installation (4 Laminate Prop) .....	24

Note: Refer to Installation Manual for details of parts used in engine installation  
Refer to Installation Manual for data & installation details on engine cooling ducts

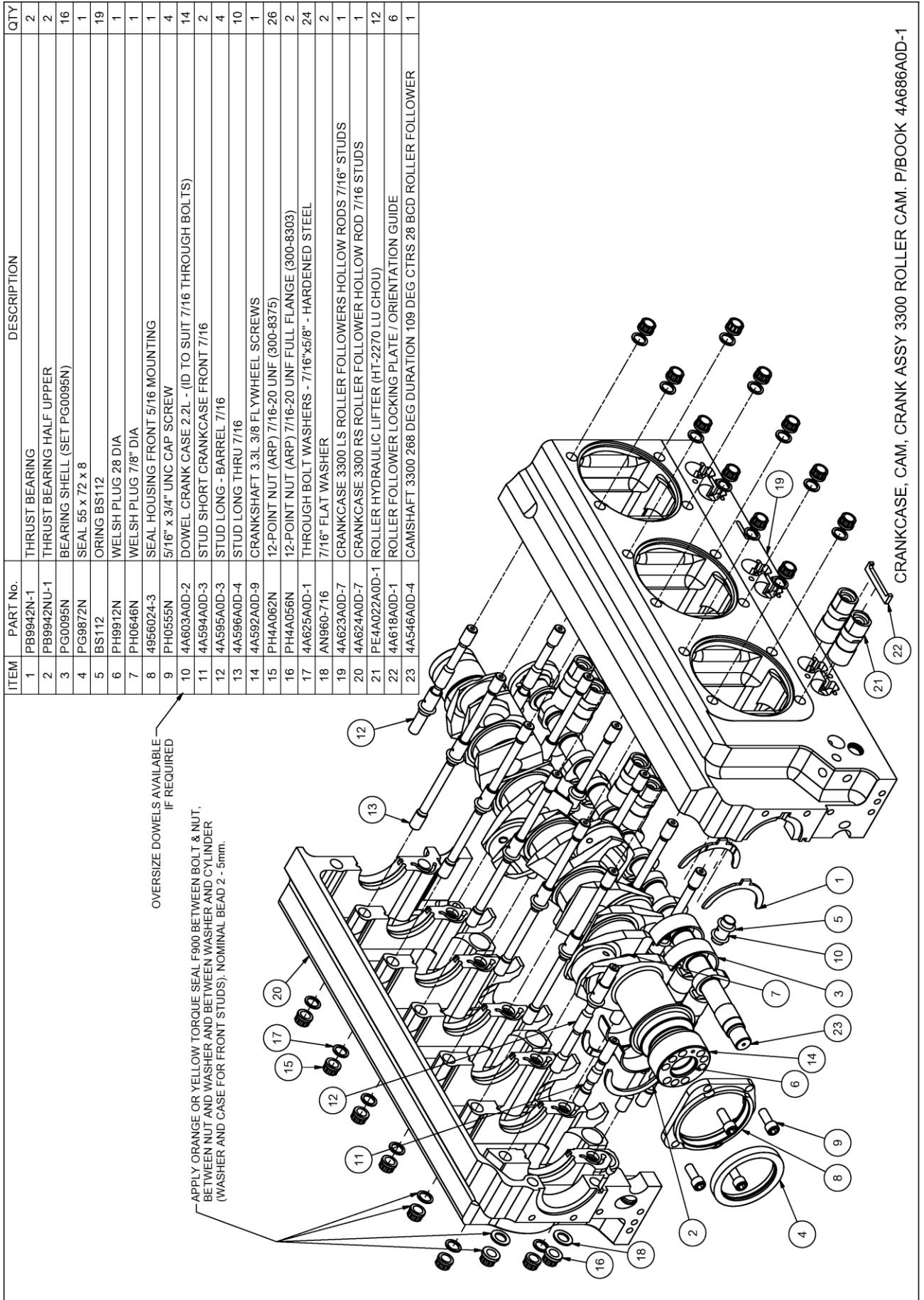
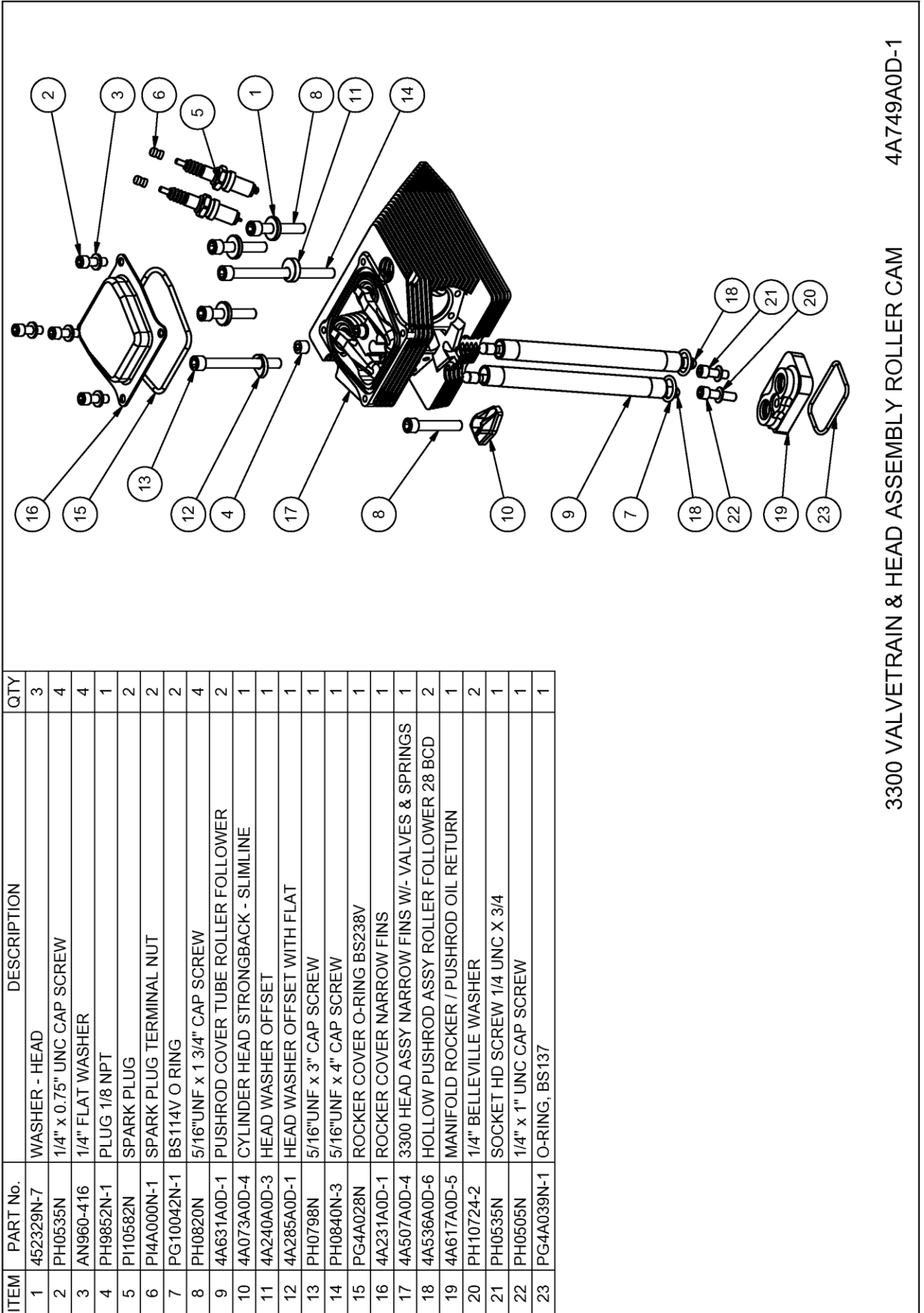


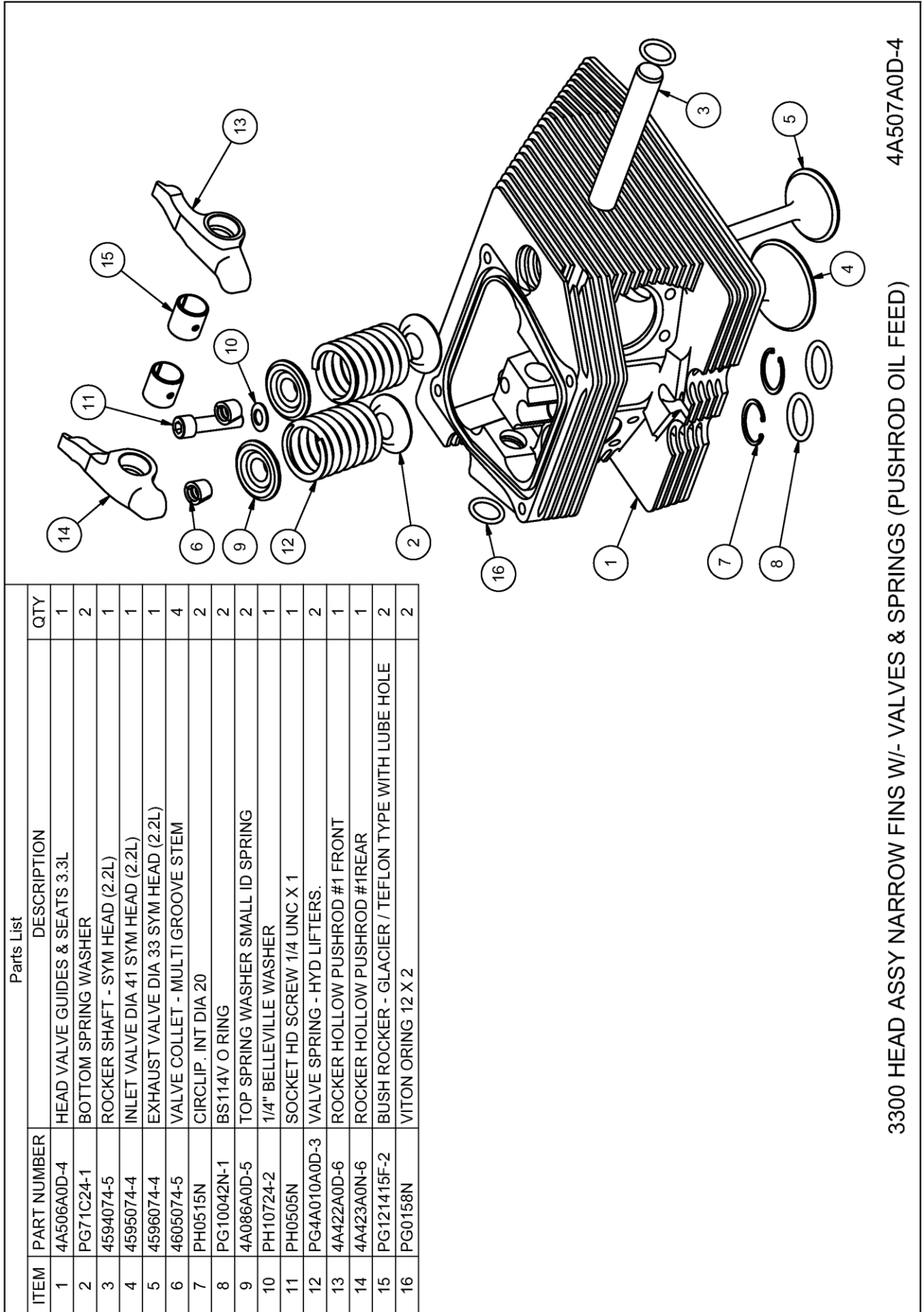
Figure 1 – Crank & Crankcase Assy 7/16 Studs



4A749A0D-1

3300 VALVETRAIN & HEAD ASSEMBLY ROLLER CAM

Figure 2– Valvetrain & Head Assembly Roller Cam Lifter



4A507A0D-4

3300 HEAD ASSY NARROW FINS W/- VALVES & SPRINGS (PUSHROD OIL FEED)

Figure 3 – Cylinder Head Assy

ITEM	PART No.	DESCRIPTION	QTY
1	4590074-15	VALVE GUIDE SYMMETRICAL HEAD	2
2	4797004-5	VALVE SEAT INSERT INLET W8201	1
3	4790004-6	VALVE SEAT INSERT EXHAUST	1
4	4A506B0D-5	HEAD NARROW FINS MACHINED 3.3L (PUSHROD OIL FEED)	1

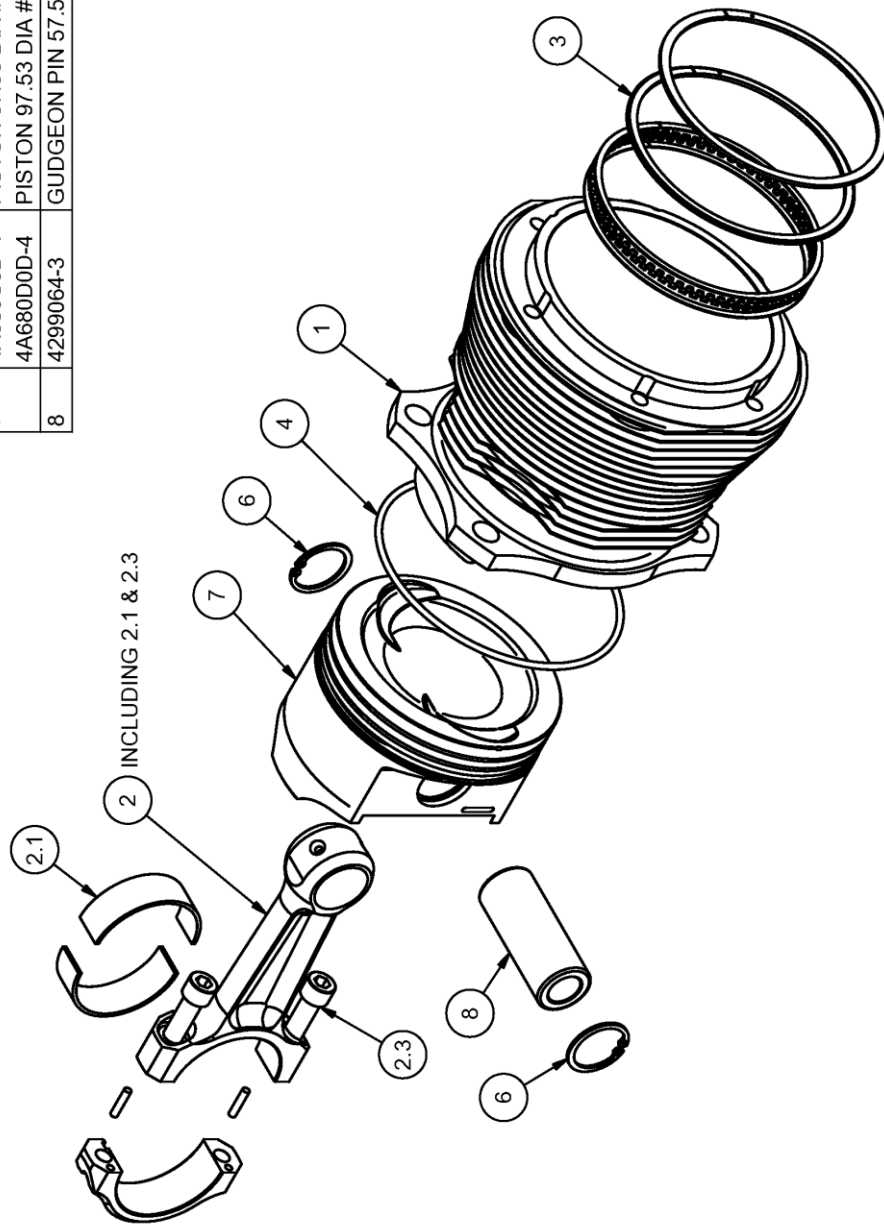
  

HEAD VALVE GUIDES & SEATS 3.3L      4A506A0D-4

**Figure 4 – Head Valve Guides & Seats 3.3L**

Note: Oversize valve guides available, use std P/N & specify 0.05, 0.10, 0.15 Oversize. Identification is by 1, 2 or 3 dimples on exposed diameter when Fitted to assembled head

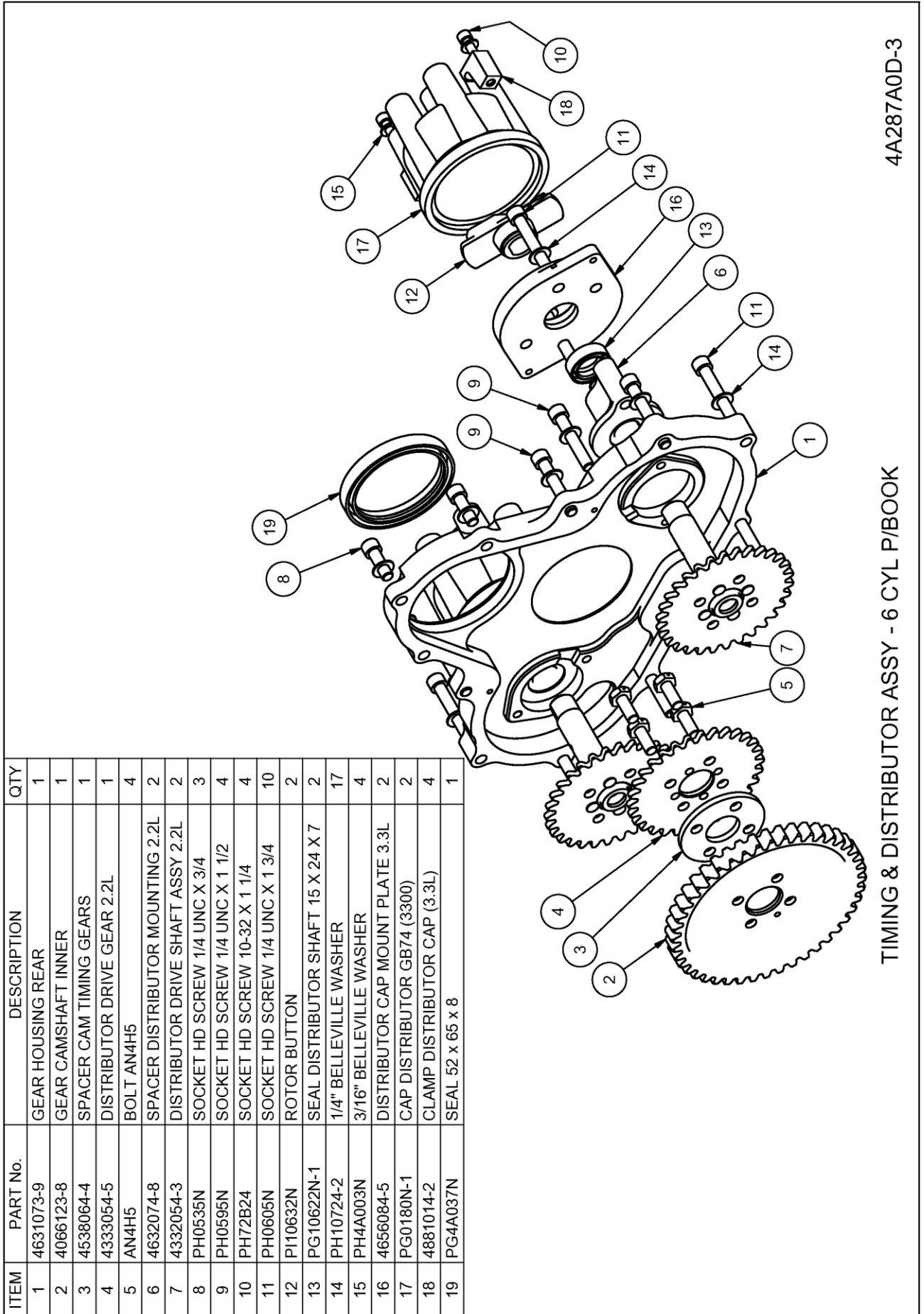
ITEM	PART No.	DESCRIPTION	QTY
1	4A593B0D-7	CYLINDER BARREL 97.52 PISTON 107 LONG 7/16 BOLTS	1
2	4651084-5	CONROD ASSY STEEL	1
2.1	PB4A006N-1	CONROD BEARING SHELL SINGLE (SET PB0055N)	2
2.3	PH72E24-1	SOCKET HD SCREW 5/16 UNF X 1	2
3	PG0200N-1	RING SET SINGLE PISTON	1
4	PG0025N-1	BS155 O RING	1
6	PH4A047N-1	CIRCLIP INT 25 DIA	2
7	4A680C0D-4	PISTON 97.53 DIA #1, #3 & #5 (RIGHT) WITH VALVE RELIEF	1
	4A680D0D-4	PISTON 97.53 DIA #2, #4 & #6 (LEFT) WITH VALVE RELIEF	1
8	4299064-3	GUDGEON PIN 57.5 LONG (2.2L)	1



BARREL PISTON & CONROD ASSY 4A750A0D-1

Figure 5 – Barrel Piston & Conrod Assembly



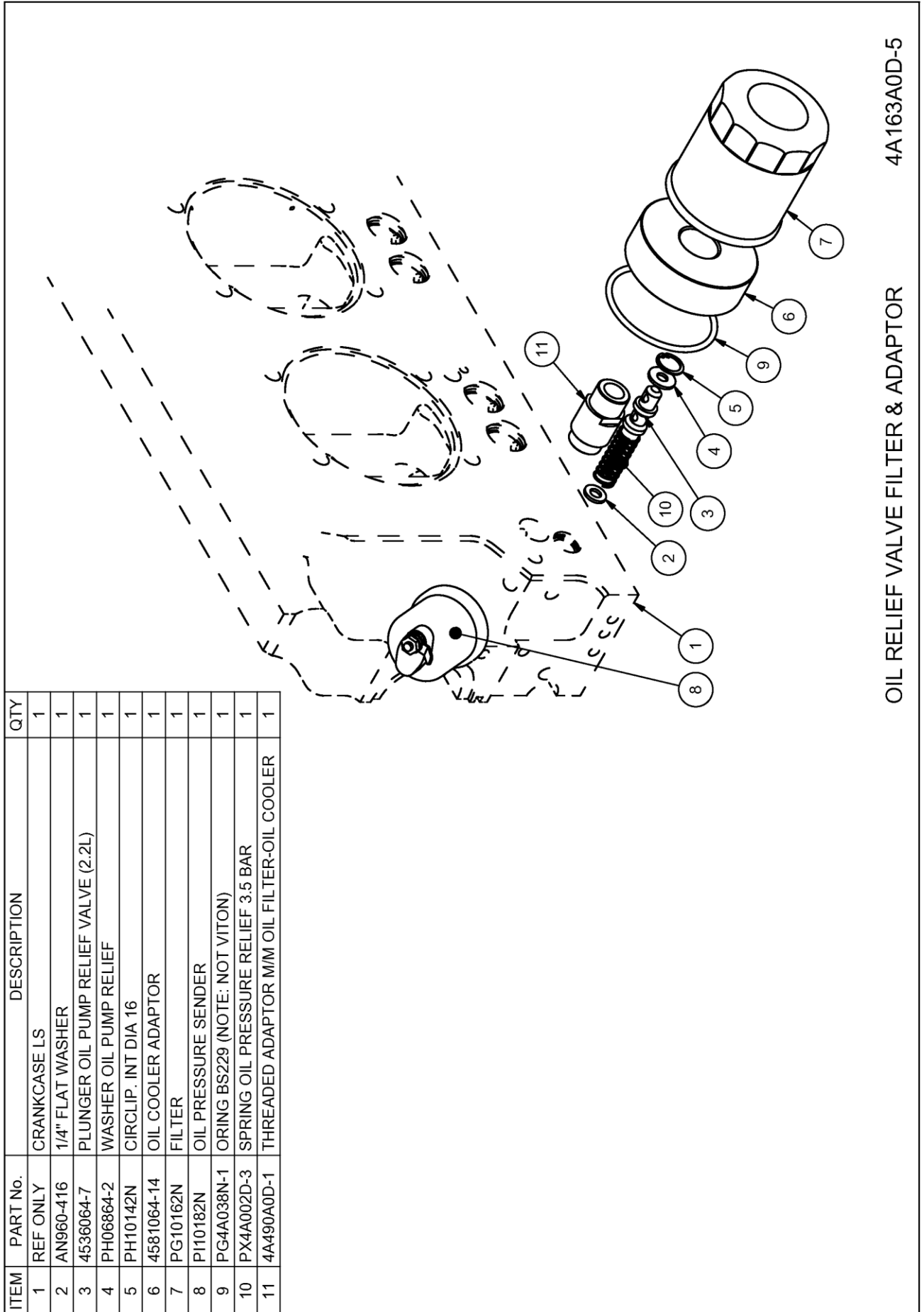


ITEM	PART No.	DESCRIPTION	QTY
1	4631073-9	GEAR HOUSING REAR	1
2	4066123-8	GEAR CAMSHAFT INNER	1
3	4538064-4	SPACER CAM TIMING GEARS	1
4	4333054-5	DISTRIBUTOR DRIVE GEAR 2.2L	1
5	AN4H5	BOLT AN4H5	4
6	4632074-8	SPACER DISTRIBUTOR MOUNTING 2.2L	2
7	4332054-3	DISTRIBUTOR DRIVE SHAFT ASSY 2.2L	2
8	PH0535N	SOCKET HD SCREW 1/4 UNC X 3/4	3
9	PH0595N	SOCKET HD SCREW 1/4 UNC X 1 1/2	4
10	PH72B24	SOCKET HD SCREW 10-32 X 1 1/4	4
11	PH0605N	SOCKET HD SCREW 1/4 UNC X 1 3/4	10
12	PI10632N	ROTOR BUTTON	2
13	PG10622N-1	SEAL DISTRIBUTOR SHAFT 15 X 24 X 7	2
14	PH10724-2	1/4" BELLEVILLE WASHER	17
15	PH4A003N	3/16" BELLEVILLE WASHER	4
16	4656084-5	DISTRIBUTOR CAP MOUNT PLATE 3.3L	2
17	PG0180N-1	CAP DISTRIBUTOR GB74 (3300)	2
18	4881014-2	CLAMP DISTRIBUTOR CAP (3.3L)	4
19	PG4A037N	SEAL 52 x 65 x 8	1

4A287A0D-3

TIMING & DISTRIBUTOR ASSY - 6 CYL P/BOOK

Figure 6– Timing & Distributor Assembly



4A163A0D-5

OIL RELIEF VALVE FILTER & ADAPTOR

Figure 7 – Oil Relief Valve Filter & Adaptor

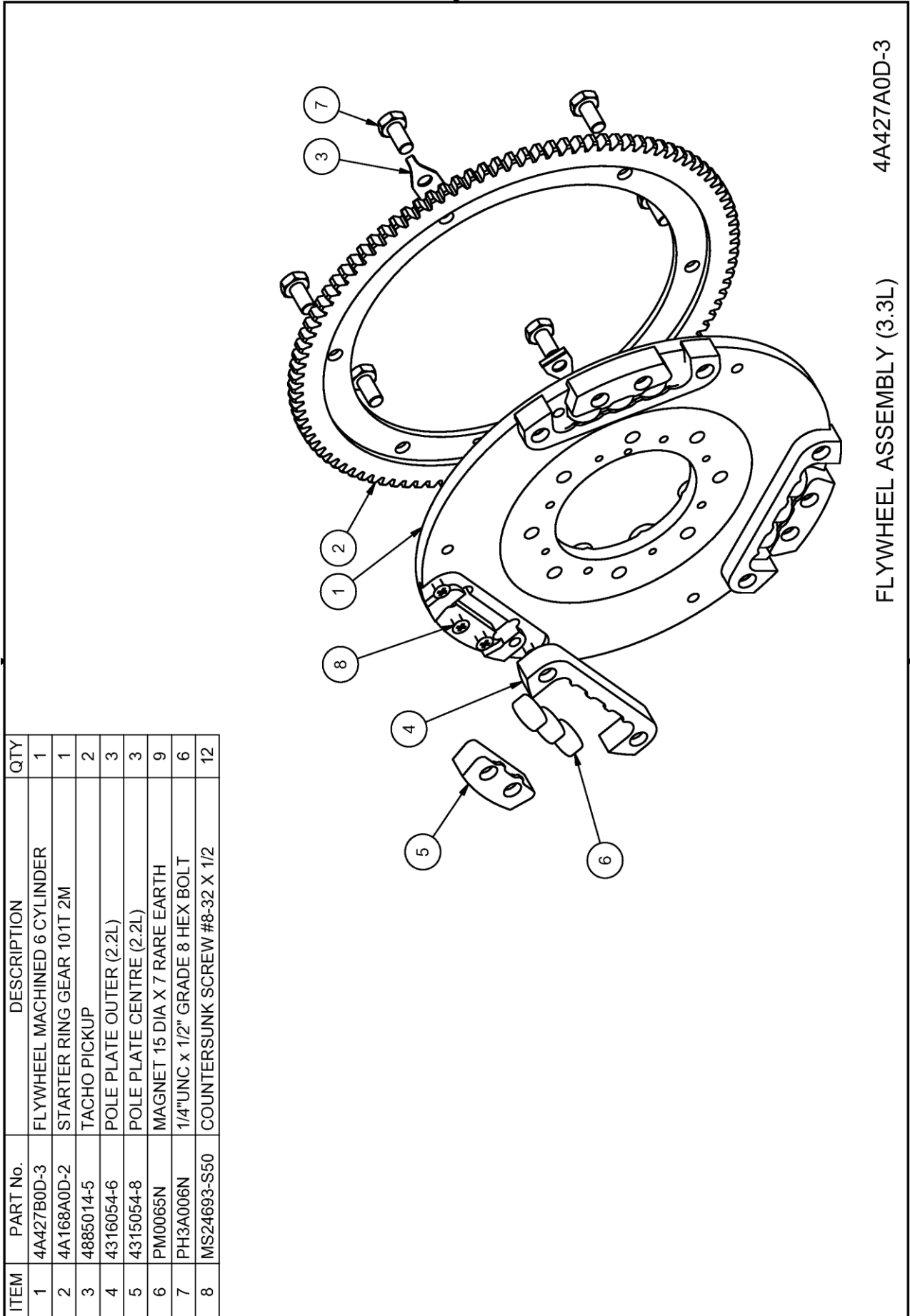
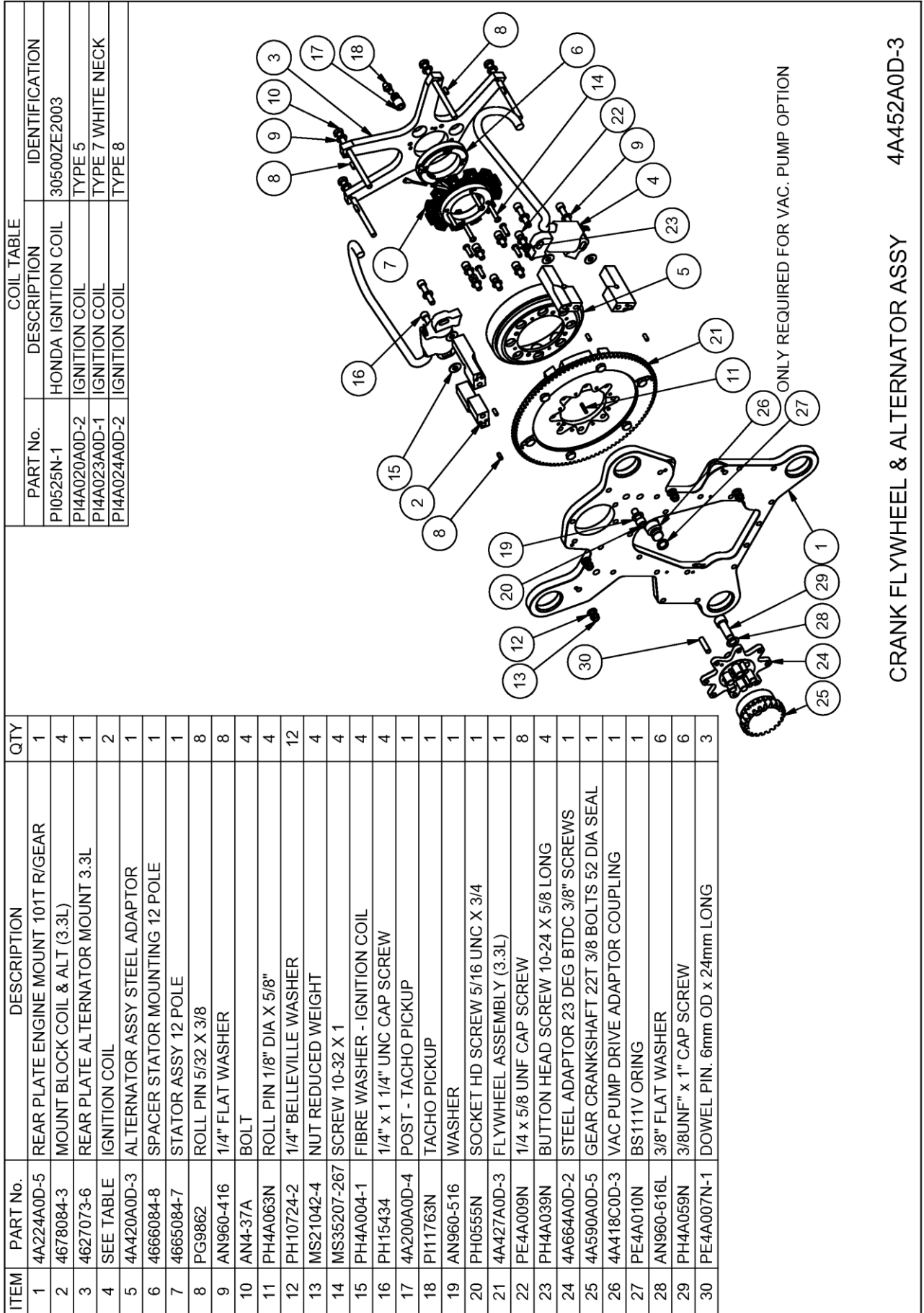


Figure 8 – Flywheel Assembly



CRANK FLYWHEEL & ALTERNATOR ASSY 4A452A0D-3

Figure 9 – Flywheel & Alternator Assembly

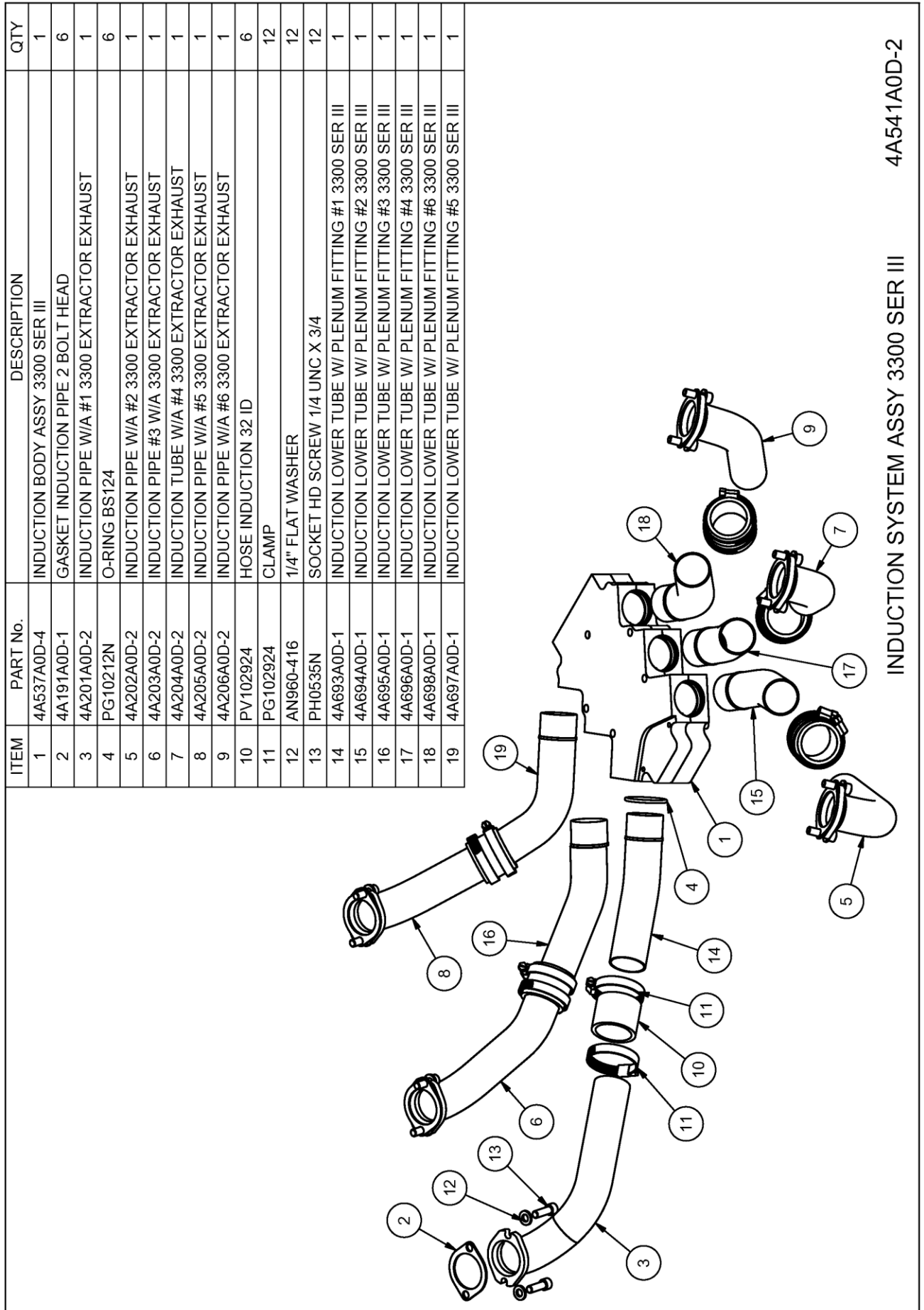


Figure 10 – Induction Assy 3300 Ser III

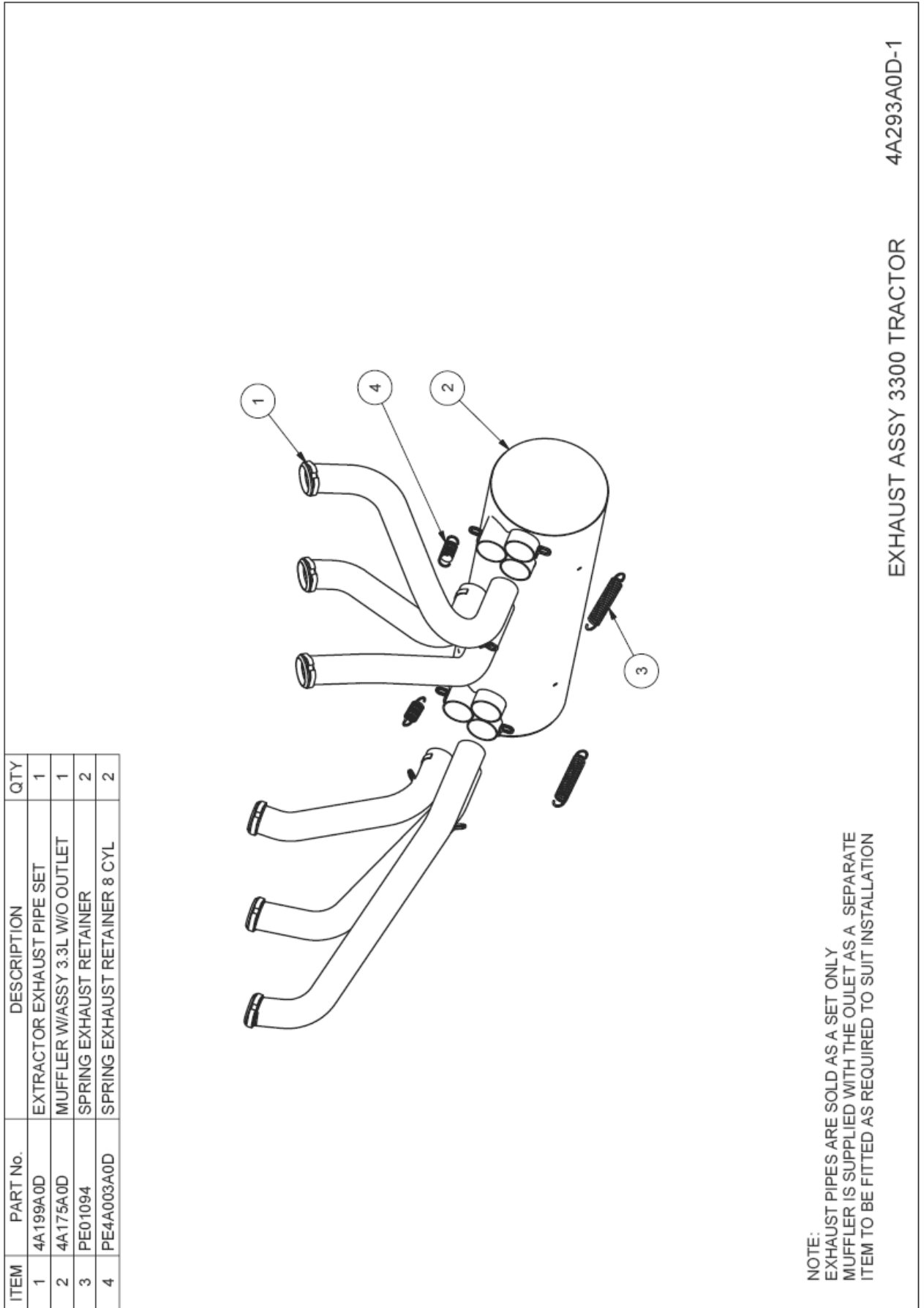
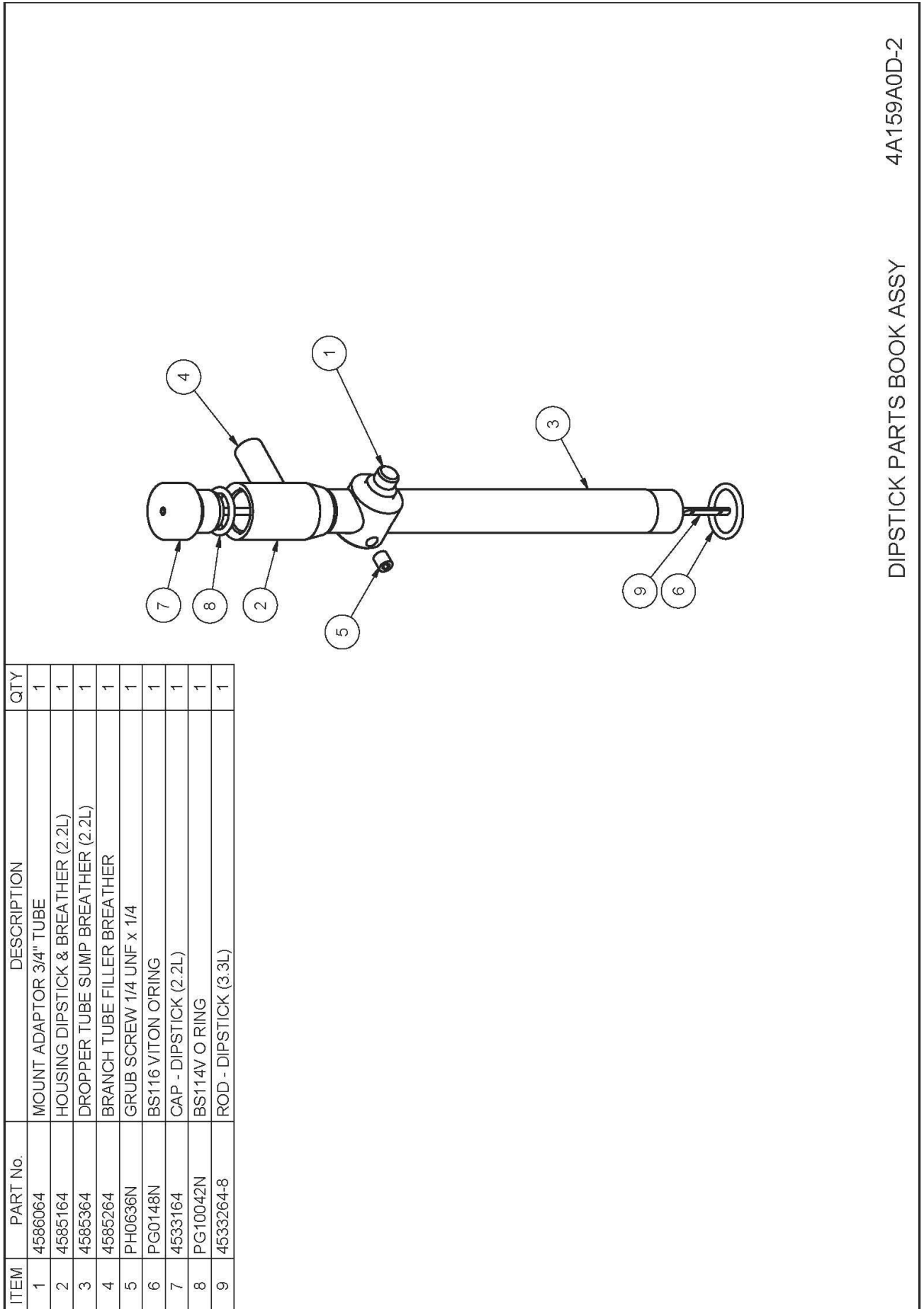


Figure 11 – Exhaust Assembly Tractor



4A159A0D-2

DIPSTICK PARTS BOOK ASSY

Figure 12 – Drawing 4A159A0D Dipstick Assembly

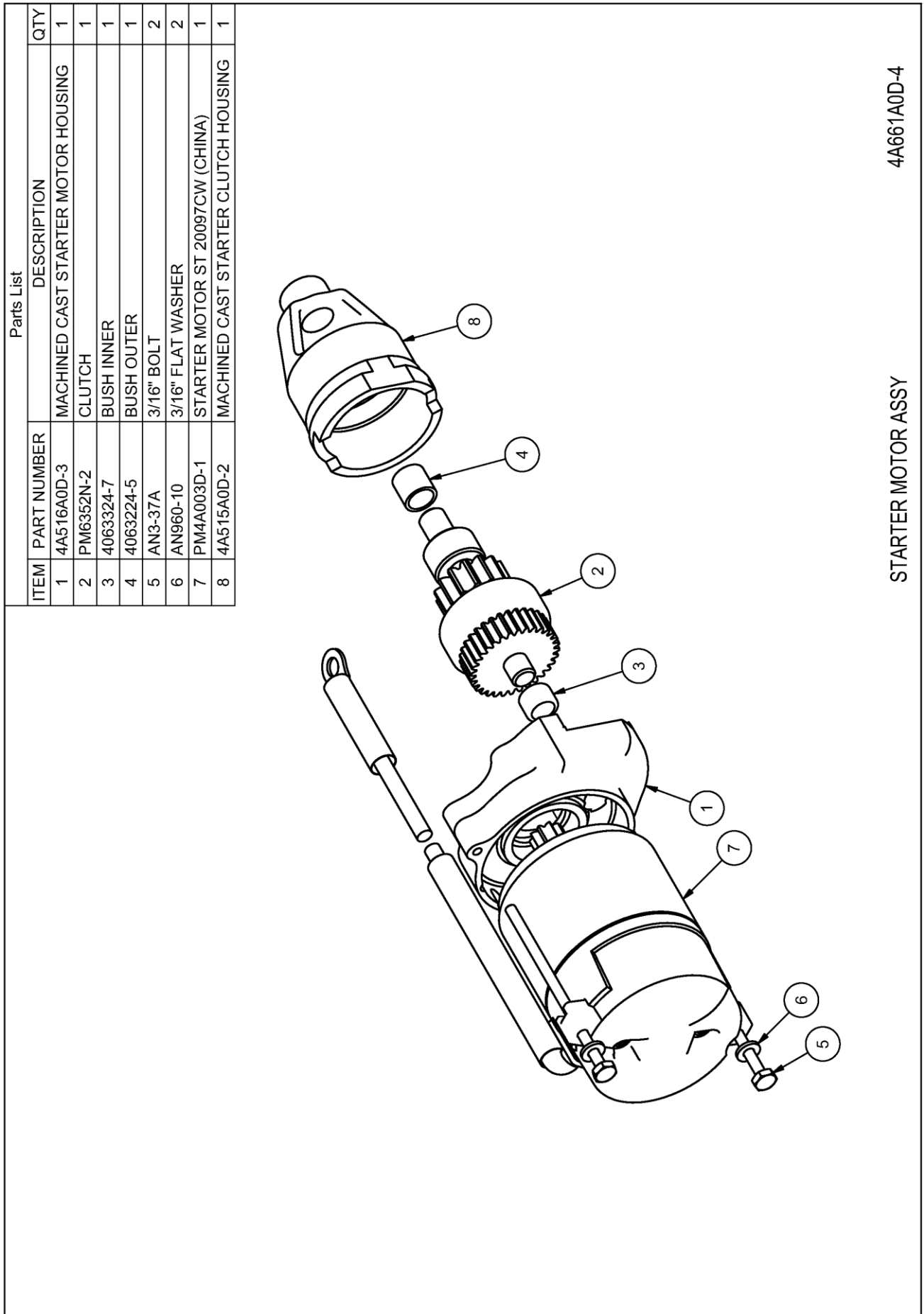
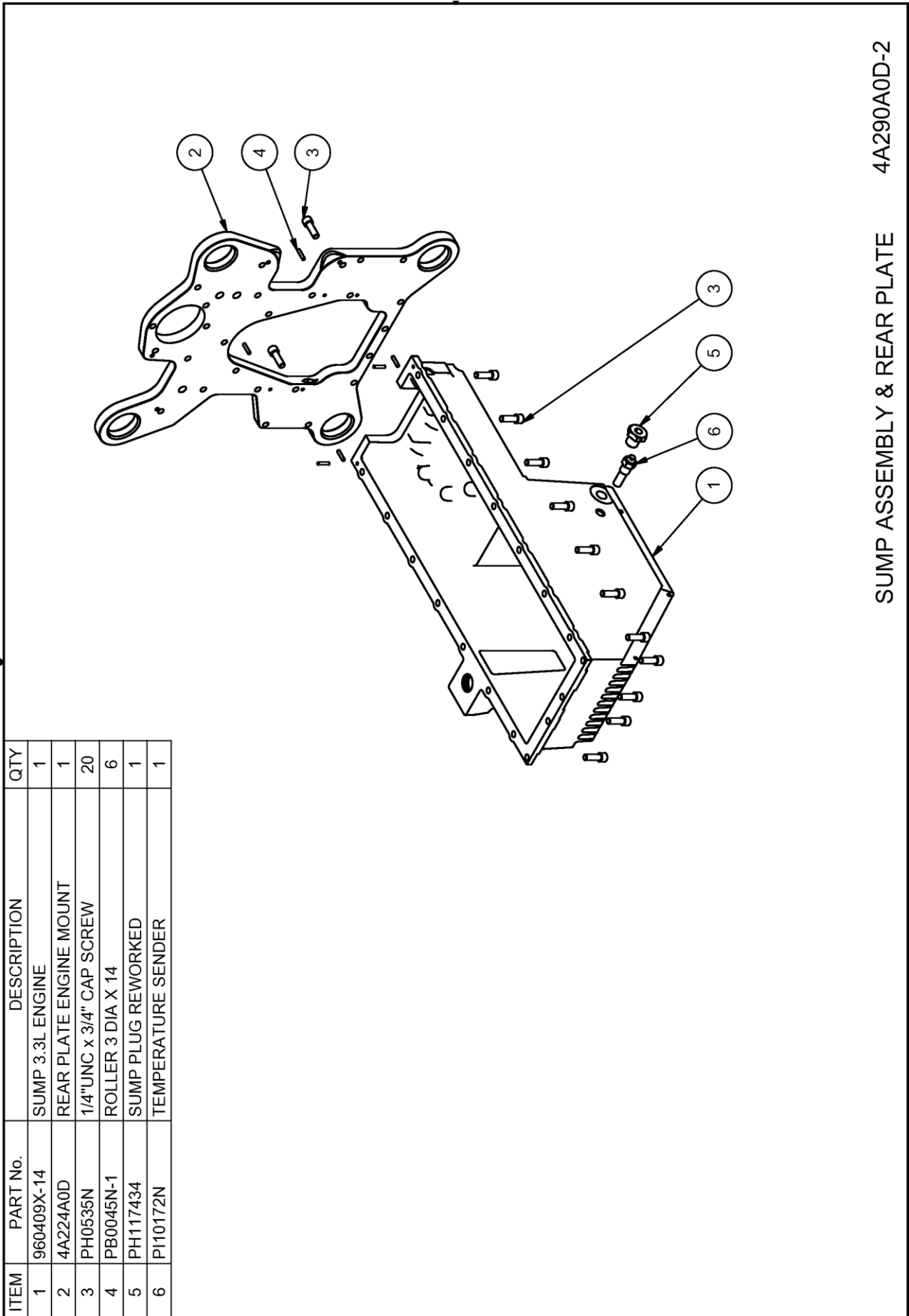


Figure 13 – Starter Motor Assembly

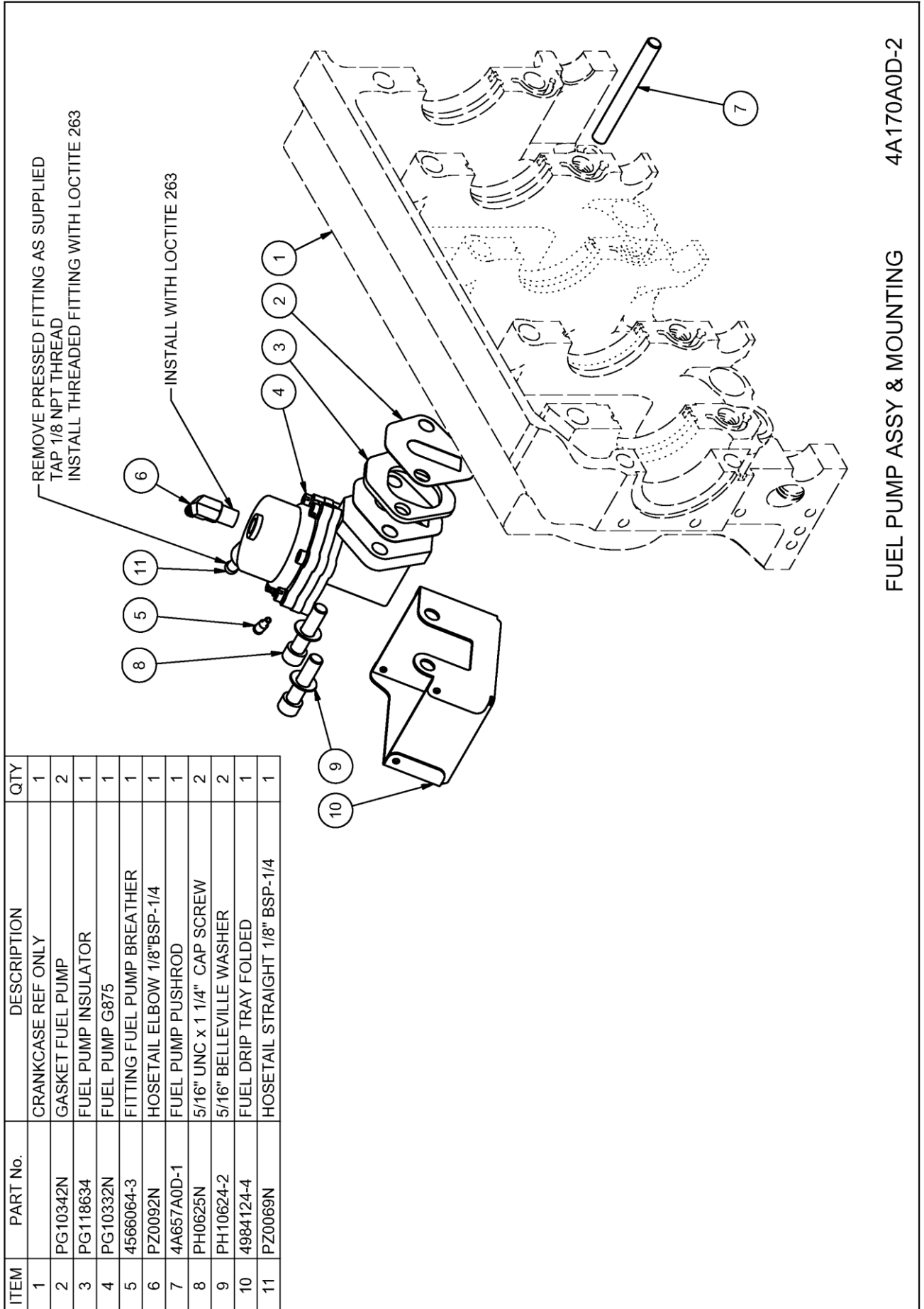




4A290A0D-2

SUMP ASSEMBLY & REAR PLATE

Figure 14 – Sump Assembly & Rear Plate

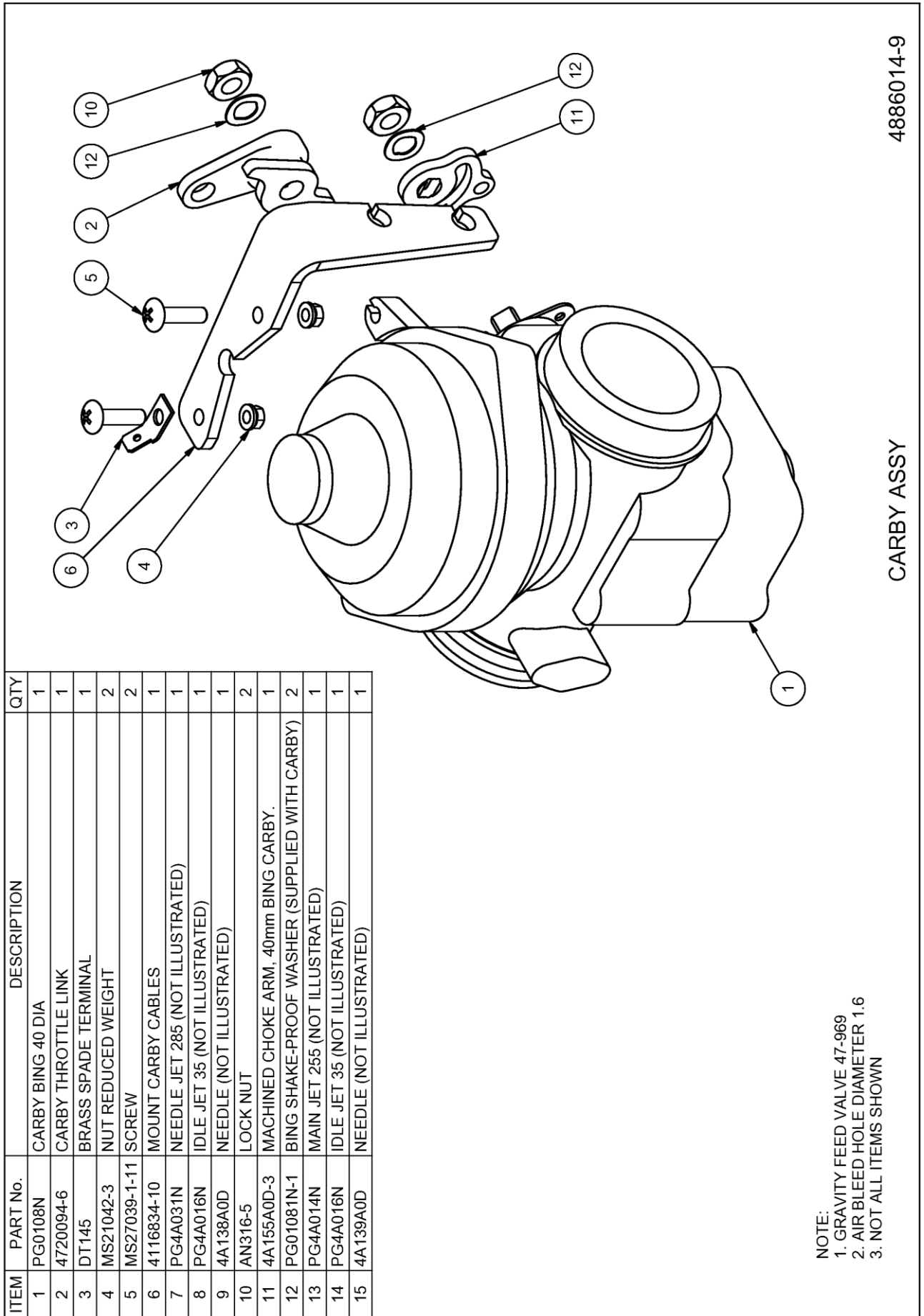


ITEM	PART No.	DESCRIPTION	QTY
1		CRANKCASE REF ONLY	1
2	PG10342N	GASKET FUEL PUMP	2
3	PG118634	FUEL PUMP INSULATOR	1
4	PG10332N	FUEL PUMP G875	1
5	4566064-3	FITTING FUEL PUMP BREATHER	1
6	PZ0092N	HOSETAIL ELBOW 1/8"BSP-1/4	1
7	4A657A0D-1	FUEL PUMP PUSHROD	1
8	PH0625N	5/16" UNC x 1 1/4" CAP SCREW	2
9	PH10624-2	5/16" BELLEVILLE WASHER	2
10	4984124-4	FUEL DRIP TRAY FOLDED	1
11	PZ0069N	HOSETAIL STRAIGHT 1/8" BSP-1/4	1

Figure 15 – Fuel Pump Assembly & Mounting

4A170A0D-2

FUEL PUMP ASSY & MOUNTING



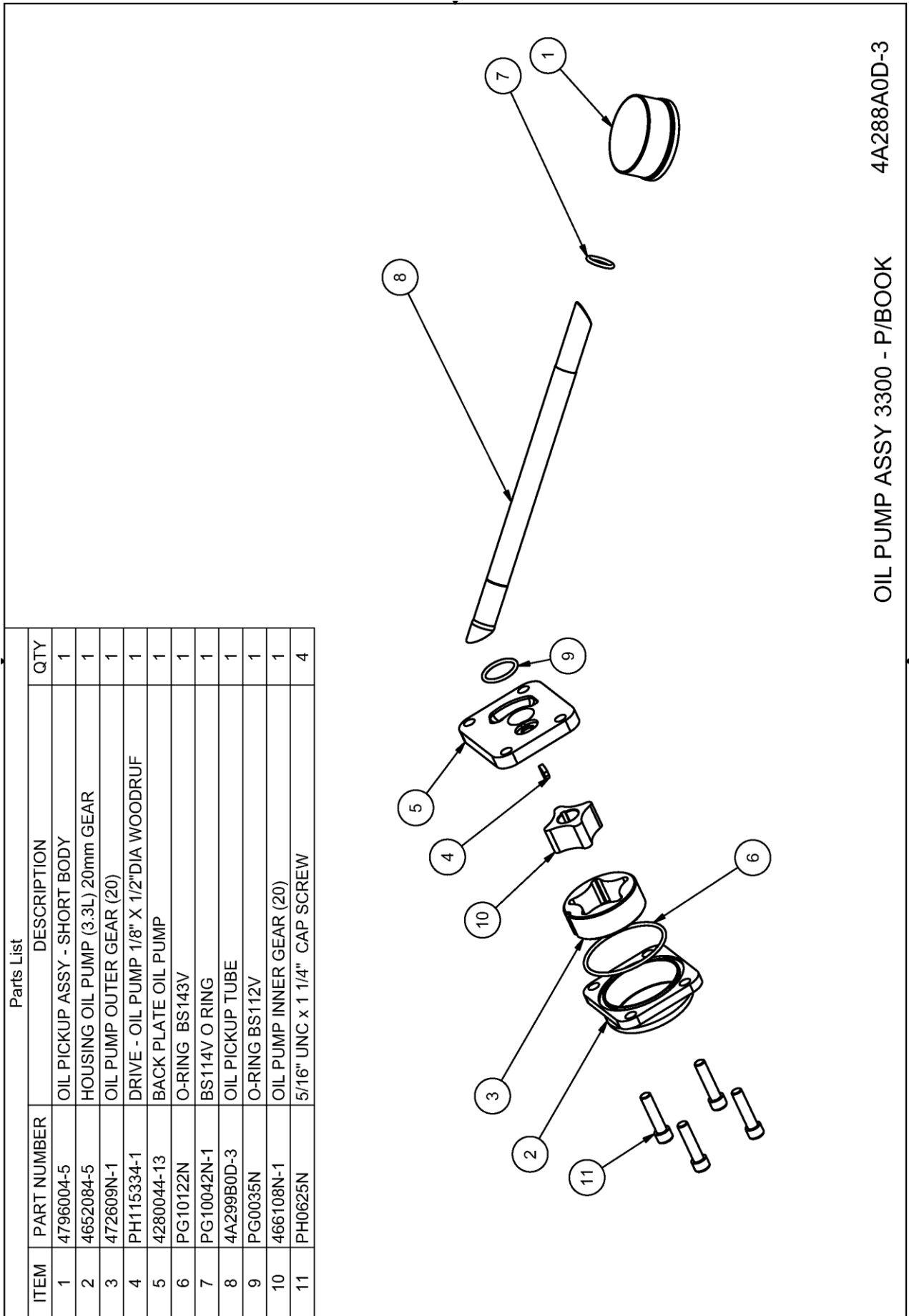
ITEM	PART No.	DESCRIPTION	QTY
1	PG0108N	CARBY BING 40 DIA	1
2	4720094-6	CARBY THROTTLE LINK	1
3	DT145	BRASS SPADE TERMINAL	1
4	MS21042-3	NUT REDUCED WEIGHT	2
5	MS27039-1-11	SCREW	2
6	4116834-10	MOUNT CARBY CABLES	1
7	PG4A031N	NEEDLE JET 285 (NOT ILLUSTRATED)	1
8	PG4A016N	IDLE JET 35 (NOT ILLUSTRATED)	1
9	4A138A0D	NEEDLE (NOT ILLUSTRATED)	1
10	AN316-5	LOCK NUT	2
11	4A155A0D-3	MACHINED CHOKE ARM, 40mm BING CARBY.	1
12	PG01081N-1	BING SHAKE-PROOF WASHER (SUPPLIED WITH CARBY)	2
13	PG4A014N	MAIN JET 255 (NOT ILLUSTRATED)	1
14	PG4A016N	IDLE JET 35 (NOT ILLUSTRATED)	1
15	4A139A0D	NEEDLE (NOT ILLUSTRATED)	1

NOTE:  
 1. GRAVITY FEED VALVE 47-969  
 2. AIR BLEED HOLE DIAMETER 1.6  
 3. NOT ALL ITEMS SHOWN

CARBY ASSY

4886014-9

Figure 16 – Carburetor Assembly



4A288A0D-3

OIL PUMP ASSY 3300 - P/BOOK

Figure 17 – Oil Pump Assembly

ITEM	PART No.	DESCRIPTION	QTY
1	4662084-8	FLANGE - PROP MOUNT 20mm EXTENDED 3300	1
1	OR 4610074	EXTENDED PROP FLANGE 2" EXT (2200 & 3300)	1
1	OR 4525064	FLANGE PROP MOUNT 20mm EXTENDED 2200	1
2	4688084-3	GUIDE BUSH PROP S/S (2.2L)	6
3	4911024-2	SOCKET HD SCREW DRILLED 3/8 X 3/4	6
4	MS20995C32	LOCKWIRE	A/R
5	PH10224-2	BELLEVILLE WASHER	6
6	PH4A058N-1	DOWEL PIN 8mm x 24 LONG from S/N ZZA3499 & 33A2446	3
7	4A542A0D-2	PLATE PROP MOUNT - 2200 / 3300 MULTI-FIT.	1

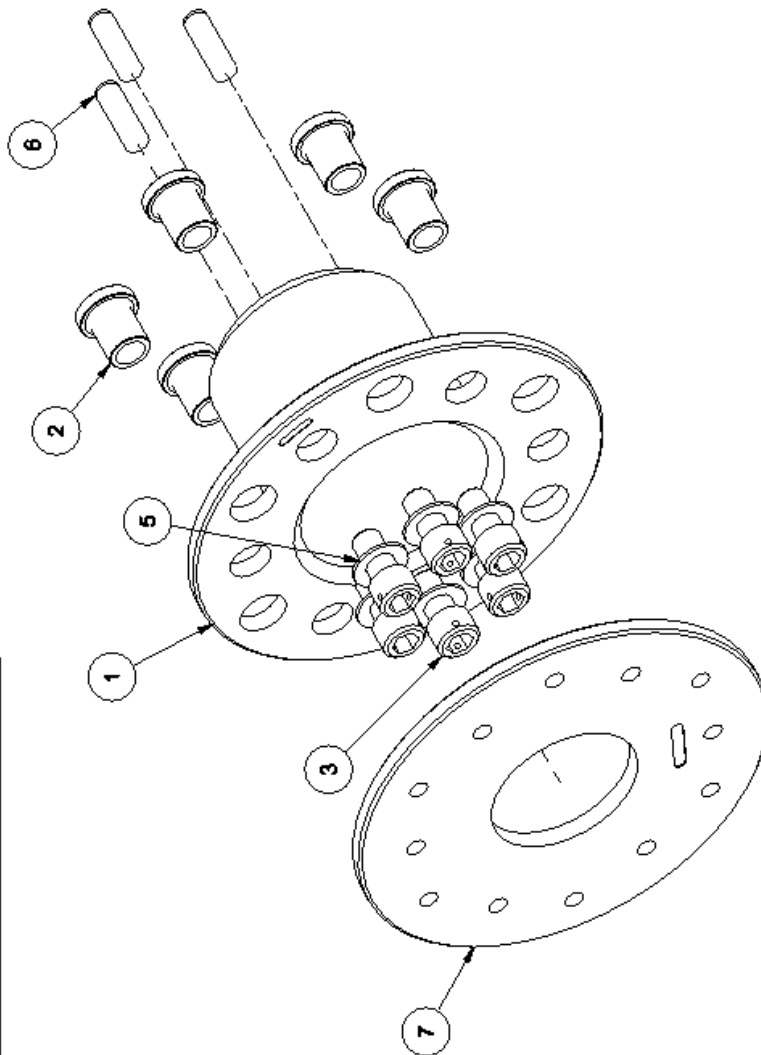
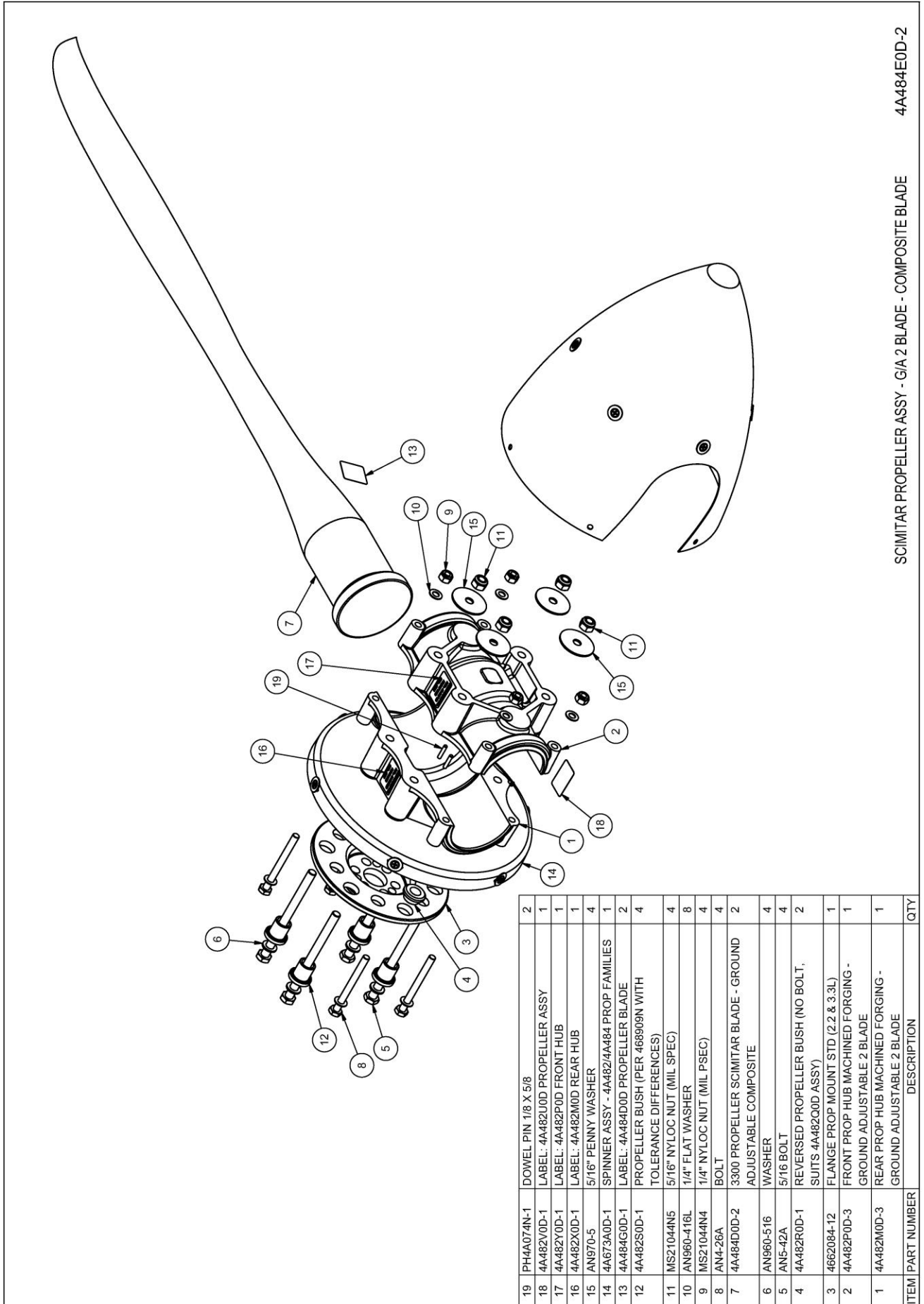


Figure 18 – Prop Flange Assembly



ITEM	PART #	ISS	DESCRIPTION	QTY
	PI10652N		RECTIFIER/REGULATOR SINGLE PHASE	1
	PI10662N		CABLE STARTER	1
	PI10672N		COUPLING CRIMP	1
	PI10682N		CABLE FITTING 5/16	1
	PI10692N		STARTER RELAY	1
	PI12497N		SOLENOID	1
	PI4A013N		IGNITION LEAD KIT	1

**Figure 19: Miscellaneous Electrical**



ITEM	PART NUMBER	DESCRIPTION	QTY
19	PH4A074N-1	DOWEL PIN 1/8 X 5/8	2
18	4A482V0D-1	LABEL: 4A482U0D PROPELLER ASSY	1
17	4A482Y0D-1	LABEL: 4A482P0D FRONT HUB	1
16	4A482X0D-1	LABEL: 4A482M0D REAR HUB	1
15	AN970-5	5/16" PENNY WASHER	4
14	4A673A0D-1	SPINNER ASSY - 4A482/4A484 PROP FAMILIES	1
13	4A484G0D-1	LABEL: 4A484D0D PROPELLER BLADE	2
12	4A482S0D-1	PROPELLER BUSH (PER 468909N WITH TOLERANCE DIFFERENCES)	4
11	MS21044N5	5/16" NYLOC NUT (MIL SPEC)	4
10	AN960-416L	1/4" FLAT WASHER	8
9	MS21044N4	1/4" NYLOC NUT (MIL PSEC)	4
8	AN4-26A	BOLT	4
7	4A484D0D-2	3300 PROPELLER SCIMITAR BLADE - GROUND ADJUSTABLE COMPOSITE	2
6	AN960-516	WASHER	4
5	AN5-42A	5/16 BOLT	4
4	4A482R0D-1	REVERSED PROPELLER BUSH (NO BOLT, SUITS 4A482Q0D ASSY)	2
3	4662084-12	FLANGE PROP MOUNT STD (2.2 & 3.3L)	1
2	4A482P0D-3	FRONT PROP HUB MACHINED FORGING - GROUND ADJUSTABLE 2 BLADE	1
1	4A482M0D-3	REAR PROP HUB MACHINED FORGING - GROUND ADJUSTABLE 2 BLADE	1

SCIMITAR PROPELLER ASSY - G/A 2 BLADE - COMPOSITE BLADE

4A484E0D-2

Figure 20 – Scimitar Propeller Assembly

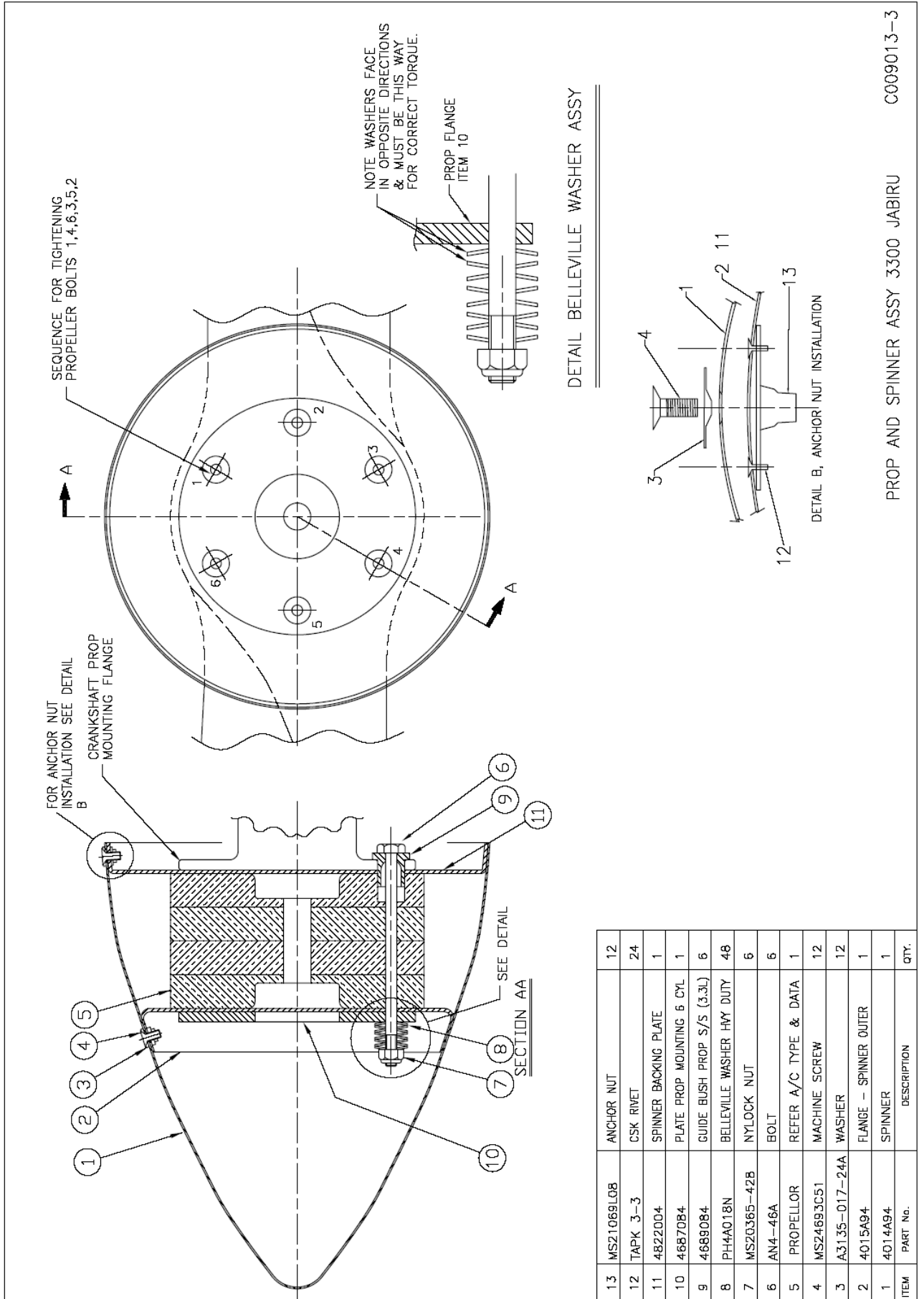


Figure 21 - Propeller Installation (4 Laminate Prop)