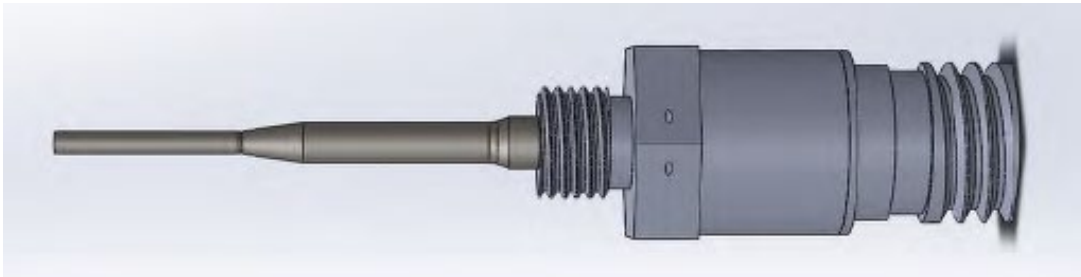




PRODUCT RELEASE

*PMA Aeroparts P/N GG436-2015-3AP, Mixed Manifold Temperature Probe
FAA Approved Replacement for
Esterline GG436-2015-3*



PMA Aeroparts announces the release of our latest FAA approved PMA product, Mixed Manifold Temperature Probe, P/N GG436-2015-3AP. This product is an approved replacement for the OEM P/N GG436-2015-3. This Mixed Manifold Temperature Probe is used on Bombardier Inc. CL-600-2C10, Regional Jet Series 700, 701 and 702; CL-600-2D15, Regional Jet Series 705; CL-600-2D24, Regional Jet Series 900; and CL-600-2E25 Regional Jet Series 1000.

PMA Aeroparts Mixed Manifold temperature Probe incorporates several improvements over the OEM. These Improvements are detailed in the table below:

Original OEM Issue	Design improvement
Precision of the thermocouple	Use of thermocouple with accuracy to .1%, 10X more accurate than the OEM
Weld integrity	Incorporated orbital electron beam welds, resulting in a more precise and effective weld.



This PMA was granted on the basis of Test and Computation per 14 CFR 21.303 and is considered a non-critical part.



U.S. Department of Transportation
Federal Aviation Administration

FEDERAL AVIATION ADMINISTRATION - PARTS MANUFACTURER APPROVAL

PMA Aeroparts LLC
11350 66th Street N., Suite 102
Largo, FL 33773

PMA No.: PQ04309CE
Supplement No.: 11
Date: August 09, 2018

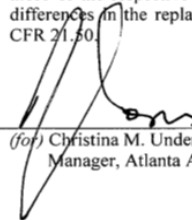
Article Name	Article Number	Approved Replacement for Article Number	Approval Basis and Approved Design Data	Make/TCH Eligibility	Model/Series Eligibility
Mixed Manifold Temperature Probe	GG436-2015-3AP	GG436-2015-3	Test & Computation per 14 CFR 21.303 DWG No: GG436-2015-3AP Rev: B Date: 3/23/2018 or later FAA-approved revisions	Bombardier Inc.	CL-600-2C10 (Regional Jet Series 700, 701 & 702) CL-600-2D15 (Regional Jet Series 705) CL-600-2D24 (Regional Jet Series 900) CL-600-2E25 (Regional Jet Series 1000)

-----END OF DATA-----

GENERAL NOTES:

Provide minor design changes in a manner as determined by the ACO. Process major design changes to drawings and specifications in the same manner as that for an original FAA-PMA.

The FAA accepted the ICA approach for the above articles with their designs. These ICA may refer to those of the respective articles from the holders of type certificates. Otherwise, provide supplemental ICA for differences in the replacement articles. Make referral statements or supplemental ICA readily available per 14 CFR 21.50.



(for) Christina M. Underwood
Manager, Atlanta ACO Branch



John Kolin
Manager, Orlando MIDO Section
System Oversight Division