

The July & August 2019 Newsletter Gardens Gate



Port St. Lucie
Botanical Gardens



NATIVE BEES AND OTHER POLLINATORS

Do you enjoy juicy watermelons, local blueberries and strawberries and fresh Florida orange juice? How about carrots, broccoli, almonds and apples? If you do, please thank an insect.

More than 100 crops are dependent on insect pollination, resulting in an economic value of \$18 to \$27 billion in the United States. Major Florida crops that benefit from bee pollination include cucumber, watermelon, specialty citrus, squash, strawberries, avocados, blueberries and eggplant.

In native plant communities, pollinators aid in the reproduction cycle from flowering to fruiting, thus ensuring productivity and good health of the



[Continued on Pg 3](#)

Contents

President's Message	Pg2
Board & Committees	Pg2
Video Of The Month	Pg2
Garden Center Summer Specials	Pg5
Propagation & Volunteer Thanks	Pg6

Moonraker at The Gardens 2020	Pg9
July & August Calendars	Pg10
July & August Planting Calendars	Pg13
What's Flowering & Edibles to Plant	Pg15
Funnies	Pg18
Out & About with The Gardens	Pg19
Call For Images	Pg21
Upcoming Events - BOOtanical Halloween	Pg47
Are You A Member of Friends?	Pg48

Reminder

FRIENDS BOARD MEETINGS
JULY - NO MEETING
AUGUST - 08.12.19 @ 4:30PM



2410 SE Westmoreland Blvd.
 Port St. Lucie, FL 34952
 Phone: 772.337.1959
 Fax: 772.237.5952
 E-mail: info@pslbg.org
 Web: www.pslbg.org
 Hours: Wednesday - Saturday 10am - 4pm
 Sunday Noon - 4pm
 Closed Monday, Tuesday & Some Holidays
 Suggested Donations:
 Adults \$5
 Students \$2
 Children 12 & Under Welcome
 Free for FPSLBG Members and
 Active Military with family (IDs required)

Mission Statement . . .

Friends' mission is to create and maintain a beautiful, serene sanctuary in the center of Port St. Lucie that is environmentally sound and naturally diverse and to provide educational, cultural and recreational opportunities for all who visit.

Officers & Directors . . .

President:	Joleen King
Vice President:	Heather Furnari
Secretary:	Claire Clark
Treasurer:	Brenda Gustafson
Directors:	Brett Ashley
	Jeff Chambers
	Melinda DeMarco
	Judy Nash-Wade
	Michelle Peterson
	Tim Sutton
	Mary Thomas

Standing Committee Chairs . . .

Election Committee:	Stephanie Alessandrini-Giarraffa
Finance Committee:	Brenda Gustafson
Gift Shop Committee:	Claire Clark
Horticulture Committee:	Brenda Gustafson
Membership & Volunteer Committee:	Mary Thomas
Resource Development Committee:	Melinda DeMarco
Strategic Planning Committee:	Brett Ashley

Newsletter . . .

Editor & Design: Mark Barnes

The Gardens is managed and operated by Friends of the Port St. Lucie Botanical Gardens, Inc., a non-profit 501(c)(3) public charity organization, that was founded to help support the daily operations of The Gardens. Friends volunteers provide hands-on daily oversight of the facility, including staffing to handle the many visitors year round. Please consider becoming a member of Friends. Friends' is a 100% volunteer organization. In all cases, donations are deductible to the extent allowed by law.



PRESIDENT'S MESSAGE...

Greetings to everyone as we bring you up to date on July activities at the Port St Lucie Botanical Gardens. As the temperatures assume their typical summer sizzle, indoor activities take on importance. Volunteers continue to groom, plant and propagate throughout the Garden. The Hibiscus garden room has been spruced up, and the new Faerie Forrest is developing a genuine following of faerie enthusiasts.

Please don't allow the summer temperatures to discourage visiting your PSL Botanical Gardens! We appreciate each and every visitor.

Thank you.

Joleen King
President

VIDEO OF THE MONTH

**WHAT WE DO -
 BOTANICAL GARDENS
 VOLUNTEERS**

ecosystem. More than 70 percent of flowering plants require an insect to move pollen. Plants evolve to attract efficient pollinators, while pollinators evolve to increase foraging success. Both must adapt also to seasonal change, disease and predation.

Pollinators also serve as a food source for birds, lizards and spiders. Ninety percent of birds digest insects at some stage of their lives. Not only that, bees and other pollinators help produce seeds that comprise 25 percent of bird and mammal diets worldwide.

More than just honeybees

When gardeners think of pollinators, they usually visualize European bees and butterflies. However, a host of other insects are important pollinators, including native bees, wasps, moths, flies, beetles, hummingbirds and even bats.

Native bees, in particular, are very important for both ecological and agricultural reasons. For instance, they are more efficient than honeybees because they work in a wider range of weather conditions and have more diverse foraging behavior and pollen-carrying techniques. That's why researchers are focusing on habitat management and conservation to help these small but mighty winged creatures.

Female bees gather pollen — a sweet, fatty, protein-rich food — to consume and to nourish offspring. They use their tongues to gather nectar for energy. During foraging, pollen sticks to bees' bodies and is transferred to other plants along the flight path to the nest. On each foraging trip, bees visit one particular plant species and travel from 100 feet to more than a mile (larger bees can fly farther than smaller ones). They switch to different plant species as needed on future trips to take advantage of plants in their habitat. Although some bees use a single plant family for food, most are generalists that gather from a wide range of flowers.

Development hurts native bees

Pressures on native bee populations include loss of habitat and plant diversity due to development. Widespread use of pesticides in landscapes and on farms also have taken their toll — so much so that semi-trailers of bees are shipped across country to agricultural areas in California, Maine, Florida and the Carolinas each growing season to help pollinate crops.

In 2005, the The Xerces Society for Invertebrate Conservation identified the 57 bees species at greatest risk and began compiling information on the bees' biology, distribution and habitat needs. A companion list of 59 butterflies and moths that are in peril also has been compiled. (View the "Red List" of endangered pollinators, which includes six butterflies found in Florida, at www.xerces.org/red-lists).

Urban landscapes serve as connectors between fragmented natural habitat areas. That's why even small habitat improvements in your yard can assist bees. Guidelines are similar to those used to attract butterflies: provide host plants, flowers for nectar and nesting sites, and eliminate pesticide use.

Nesting habits

Ninety percent of native bees are solitary — each female makes her own nest after mating with a male. The bees live about one year, with the active adult stage lasting 3 to 6 weeks. The rest of their lives are spent in the egg, larval and pupal stages.

Seventy percent of bees nest in burrows in the ground where soil is well-drained and sparsely vegetated. The other 30 percent use soft or hollow plant twigs for nesting sites or adopt tunnels in dead or dying trees.

Bumble bees, on the other hand, are social bees that live in colonies where there is one egg-laying queen and 100 to 300 independent workers that tend the nest. Nesting sites consist of things like dry holes in trees, grass clumps or even used birdhouses.

Sweat bees are small, but their abundance makes them important pollinators. There are more than 200 species in the US. These bees, which carry pollen on back-leg hair patches, nest primarily in underground tunnels. Some sweat bees have drab colors, while others are bright metallic green.

Leafcutting bees include more than 60 species in Florida. They are important pollinators of wildflowers and commercial crops. Their name describes the process in which leaf pieces are cut and used to form nests in rotting wood cavities and plant stems, holes in concrete walls and even snail shells.

Native bees are four times more likely to be attracted to native plants, with which they evolved over thousands of years. Hybridization of many species has changed flower sizes and shapes, making them less attractive to the insects. Bees also will forage on some heirloom perennials and herbs, including basil, catnip, mint, borage, oregano, hyssop and rosemary.

Planning your habitat

When designing habitat for bees, make sure there are at least three plant species blooming in your garden each season. Blue, purple, violet, white and yellow are preferred flower colors. Choose several colors and plant flowers in large blocks of individual species to maximize visibility. Sunny, open areas 4 feet or more in diameter are the ideal size if you have space. For maximum bee diversity, plant 15 to 25 flowering species. Bees vary in size and so do their tongue lengths, so include flowers of different shapes, too.

Include flowering shrubs such as blueberries, hollies, willow, titi, swamp rose, Rhododendrons and Simpson's stopper. Bees also utilize flowering trees, including wild plum, buttonbush, tulip tree, tupelo, sourwood, redbud, basswood and magnolia.

If you have a vegetable garden, maximize pollination by planting bee-attracting wildflowers nearby, and let some of your radish, broccoli and basil grow to flowering stage.

If you have well-drained soil, leave open areas for ground nesting and minimize disturbance. And don't be overzealous on cleanups – bush piles, stumps, warm-season bunch grasses and plants with hollow stems may be used for nests.

The State Wildflower license plate generates funds for Florida native wildflower education, planting and research. Join the movement – [get your tag today](#). It's as easy as a phone call!

https://flawildflowers.org/celebrate-pollinators/?fbclid=IwAR1YQ4O_mCVgcYUMR9iCd9Rlq7f9EmP8cN87ICVT8JIYHCSSvywfkzSWtB4

By Claudia Larsen

References:

Attracting Native Pollinators: Protecting North America's Bees and Butterflies, The Xerces Society, 2011

Insects & Pollinators, USDA Natural Resources Conservation Service

Pollinator Partnership

Economic Impact of the Florida Apiculture Industry, Alan Hodges, David Mulkey, Effie Philippakos, Malcolm Sanford and Gary Fairchild, University of Florida, Institute of Food and Agricultural Sciences, Rev. 2001

Picture: Bee on partridge pea blossom by Jaret Daniels



Garden Center

at the Port St. Lucie Botanical Gardens



Visit our Garden Center
for lots of Specials

July & August

15% OFF

all purchases over \$10.00

Port St. Lucie Botanical Gardens

2410 SE Westmoreland Blvd.

Port Saint Lucie, FL 34952

772.337.1959

www.PSLBG.org



**Sizzling
Summer
Plant Sale**

OUR SINCERE THANKS



Thank You Sparkie for your very generous donations of Bromeliads. You're the guy that 'keeps giving' the beautiful plants

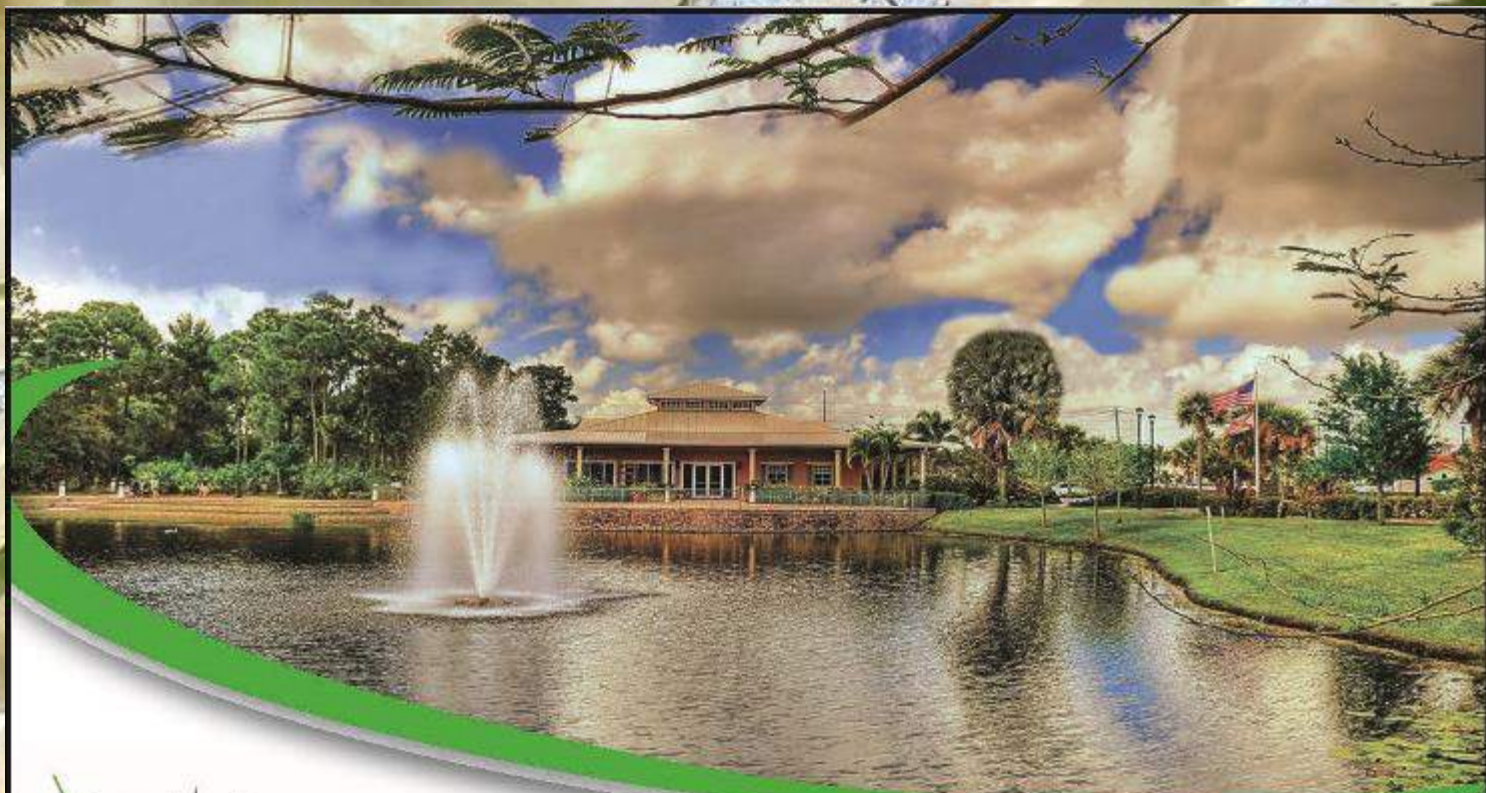
Thank you to Peter's Crotons and Cordylines for the generous donation of coleus! We're looking forward to planting them in our gardens.

And, to all of you who drop off pots and plants throughout the year we thank you for helping us grow. Let us know who your are and we'll add you to our list. Thank you for helping us grow.

Thank you to the World Changers Outside Church

They donated over 25 hours of their time working in the Gardens on a hot Saturday morning. They accomplished the clean up of a large area and we are VERY THANKFUL!





Friends of the Port St. Lucie
**Botanical
 Gardens**

Beautiful plants & flowers,
 magnificent oaks & a lake, all
 nestled on 20 acres near the shore
 of the St Lucie River. The Port St. Lucie
 Botanical Gardens is a favorite venue for
 special events in our city. The Gardens
 offers picturesque settings for your
 special occasion.

772.337.1959

2410 SE Westmoreland Blvd.

Port St. Lucie, FL 34952

Events@PSLBG.org

pslbg.org/yourevent



ATTENTION:

Nature Lovers, Butterfly Gardeners, Bird Watchers, Conservationists,
And Those Who Enjoy Flowers and Plants.

The St. Lucie West Garden Club meets at the St. Lucie Trail Golf Club
on the 3rd Monday of each month.

For more information please call President,
Dorothy Flora (772) 879-6986, normanisbest94@gmail.com
or our Membership Chairman, **Darlene Berube (508) 415-7345.**

See our Facebook page
St. Lucie West Garden Club



**St. Lucie West
Garden Club**



EXPERIENCE COUNTS – AND SAVINGS ADD UP



Find out about the **Competitive Rates** and **Special Benefits** available
through the AARP® Auto Insurance Program from The Hartford.

Ready to learn more? Contact our agency now:

POST INSURANCE



SEE HOW MUCH YOU COULD SAVE!
Call today for your **FREE**, no-obligation quote:

772-878-8184

POST INSURANCE

146 NW Central Park Plaza, Suite 102
Port St. Lucie, FL, 34986

info@insurewithpost.com
www.InsureWithPost.com

2020

Celebrating 10 Years

SAT • MARCH 28

Food
Kiosks

Music &
Dancing

Cigar
Bar

Casino
Fun

Raffles
& Prizes

MOONRAKER
at The Gardens

Cash
Bar

Ball

6:00 PM - 10:00 PM

Save The Date
Ticket & Pricing
Coming Soon

Port St. Lucie Botanical Gardens
2410 SE Westmoreland Blvd.
Port St. Lucie, FL 34952
www.PSLBG.org

[Sponsorship Opportunities Available - Click Here](#)

JULY

1 st	2020 Gala Planning Committee	3:00 - 4:15 pm	All Welcome
3 rd	Intermediate Spanish Class	10:00 - 11:30 am	All Welcome
4 th	HAPPY INDEPENDENCE DAY	OFFICE CLOSED	
7 th	Crosstown Chapel Sunday Service	9:30 - 11:45 am	All Welcome
9 th	Master Naturalists Meeting	7:00 - 9:00 pm	Members Welcome
10 th	Intermediate Spanish Class	10:00 - 11:30 am	All Welcome
10 th	Master Gardeners Meeting	10:00 am - 1:00 pm	Members Welcome
10 th	Ft. Pierce Jazz & Blues Jazz Jams	6:30 - 9:30 pm	\$7 Donation, \$6 Members
11 th	BOOtanical Halloween Committee Mtg.	10:00 - 11:30 am	All Welcome
11 th	St. Lucie West Garden Club Board Mtg.	10:00 am - 12:00 pm	Members Welcome
11 th	PSL Angler's Meeting	5:30 - 9:30 pm	All Welcome
12 th	Art in The Gardens Committee Meeting	1:00 - 3:00 pm	Members Welcome
14 th	Crosstown Chapel Sunday Service	9:30 - 11:45 am	All Welcome
17 th	Intermediate Spanish Class	10:00 - 11:30 am	All Welcome
18 th	Treasure Coast Rare Fruit Club Meeting	7:00 - 9:00 pm	All Welcome
21 st	Crosstown Chapel Sunday Service	9:30 - 11:45 am	All Welcome
24 th	Intermediate Spanish Class	10:00 - 11:30 am	All Welcome
24 th	Ft. Pierce Jazz & Blues Jazz Jams	6:30 - 9:30 pm	\$7 Donation, \$6 Members
25 th	TC Professional Photographers Assoc.	6:00 - 8:30 pm	Members Welcome
27 th	TC Bonsai Club Meeting	10:00 am - 12:00 pm	All Welcome
28 th	Crosstown Chapel Sunday Service	9:30 - 11:45 am	All Welcome
29 th	TC Bromeliad Society & Tropicals	5:30 - 9:00 pm	Members Welcome
30 th	PSL Historical Society Board Meeting	4:00 - 5:30 pm	Members Welcome
31 st	Intermediate Spanish Class	10:00 - 11:30 am	All Welcome
31 st	German American Board Meeting	2:00 pm - 4:00 pm	Members Welcome



www.PSLBG.org • The Pavilion is closed Mondays & Tuesdays
For more information on events, please call 772.337.1959

AUGUST

4 th	Crosstown Chapel Sunday Service	9:30 - 11:45 am	All Welcome
5 th	Art Show Committee Meeting	2:00 - 3:00 pm	All Welcome
7 th	Intermediate Spanish Class	10:00 - 11:30 am	All Welcome
7 th	Ft. Pierce Jazz & Blues Jazz Jams	6:30 - 9:30 pm	\$7 Donation, \$6 Members
8 th	BOOtanical Halloween Committee	10:00 - 11:30 am	All Welcome
8 th	St. Lucie West Garden Club Board Mtg.	10:00 am - 12:00 pm	Members Welcome
8 th	PSL Angler's Meeting	5:30 - 9:30 pm	All Welcome
11 th	Crosstown Chapel Sunday Service	9:30 - 11:45 am	All Welcome
12 th	Rio Lindo Club Board Meeting	10:30 am - 12:00 pm	Members Welcome
12 th	2020 Gala Planning Committee	3:00 - 4:15 pm	All Welcome
12th	FPSLBG Board of Directors Meeting	4:30 - 6:30 pm	Members Welcome
13 th	Master Naturalists Meeting	7:00 - 9:00 pm	Members Welcome
14 th	Intermediate Spanish Class	10:00 - 11:30 am	All Welcome
15 th	Treasure Coast Rare Fruit Club Meeting	7:00 - 9:00 pm	All Welcome
18 th	Crosstown Chapel Sunday Service	9:30 - 11:45 am	All Welcome
21 st	Intermediate Spanish Class	10:00 - 11:30 am	All Welcome
21 st	Ft. Pierce Jazz & Blues Jazz Jams	6:30 - 9:30 pm	\$7 Donation, \$6 Members
22 nd	TC Professional Photographers Assoc.	6:00 - 8:30 pm	Members Welcome
24 th	TC Bonsai Club Meeting	10:00 am - 12:00 pm	All Welcome
25 th	Crosstown Chapel Sunday Service	9:30 - 11:45 am	All Welcome
26 th	TC Bromeliad Society & Tropicals	5:30 - 9:00 pm	Members Welcome
27 th	PSL Historical Society Board Meeting	4:00 - 5:30 pm	Members Welcome
27 th	Tarpon Bay HOA Board Meeting	6:00 - 8:00 pm	HOA Members Welcome
28 th	Intermediate Spanish Class	10:00 - 11:30 am	All Welcome
28 th	German American Board Meeting	2:00 pm - 4:00 pm	Members Welcome



www.PSLBG.org • The Pavilion is closed Mondays & Tuesdays
For more information on events, please call 772.337.1959

WHAT'S YOUR STATION?



93.7 GYL
Today's Best Music!

99.7 JACK fm
playing what we want



B94.7 FM
FRESH COUNTRY

97.1 Ocean FM
WOSN

NEWSRADIO
WTTB
105.7 FM • 1490 AM

PosterMyWall.com

 **Impact**
esigns

Sign & Graphic Works, Inc.

772.419.8048

ImpactDesigns101.com

ImpactPromos101.com

Signs ▷ Digital Printing ▷ Graphic Design
Boat - Vehicle Wraps & Graphics ▷ T-Shirts
Photographic Reproduction - Canvas Prints
Banners ▷ Promotional Items... & More

University of Florida IFAS Extension Central Florida Gardening Calendar - July

What to Plant

Annuals/Bedding plants: Summer annuals to plant now include celosia, coleus, torenia, and ornamental pepper. **See Annuals:** http://edis.ifas.ufl.edu/topic_annual_landscape_plants

Bulbs: Butterfly lily and gladiolus are bulbs that can be planted during the middle of summer. **See Bulbs for Florida:** http://edis.ifas.ufl.edu/topic_bulbous_flowers

Herbs: While summer is too hot to start herbs from seeds, many, such as oregano and mint, do well if started from small plants. **See Herbs:** http://edis.ifas.ufl.edu/topic_herbs

Vegetables: Plant tropical vegetables, such as boniato, calabaza, and chayote this month. **See South Florida Tropicals:** http://edis.ifas.ufl.edu/topic_series_south_florida_tropicals and Chayote: http://edis.ifas.ufl.edu/topic_chayote

Palms: Continue planting palms while the rainy season is in full swing. Support large palms with braces for 6–8 months after planting. Do not drive nails directly into a palm trunk. **See Palms:** http://edis.ifas.ufl.edu/topic_palms

What to Do

Trees: Prepare for hurricane season by checking trees for damaged or weak branches and pruning if needed. Hire an ISA-certified arborist. **See International Society of Arboriculture:** <http://isa-arbor.com/> and *Pruning Landscape Trees and Shrubs:* http://edis.ifas.ufl.edu/topic_tree_pruning

Lawns: Determine the cause of any lawn problems before taking action. If an insect is the culprit, treat only the affected area. Rule out disease or sprinkler malfunction. **See Turfgrass Pest Insects:** http://edis.ifas.ufl.edu/topic_turf_pest_insects

Fertilizer Bans: Numerous municipalities in south Florida prohibit the application of fertilizer to lawns and/or landscape plants during the summer rainy season (June–September). See if such an ordinance exists in your area.

Vegetable garden: Use summer heat to solarize the vegetable garden for fall planting. It takes 4–6 weeks to kill weeds, disease, and nematodes, so start now. **See Soil Solarization:** http://edis.ifas.ufl.edu/topic_soil_solarization

Irrigation: Install an inexpensive rain shutoff device to save money by overriding an irrigation system when it rains. If one is already installed, check that it is operating properly. **See Landscape Irrigation:** http://edis.ifas.ufl.edu/topic_landscape_irrigation

Pests on ornamental plants: Inspect the leaves of ornamental plants for small white dots that may indicate lace bugs at work. Spray forcefully with water to help control this pest. **See Landscape Pest Management:** http://edis.ifas.ufl.edu/topic_landscape_pests and *Landscape Lace Bug Pests:* http://edis.ifas.ufl.edu/topic_landscape_lace_bug_pests

Tropical fruit trees: Check for damage to fruit or leaves and take action to minimize the effect of insects and/or disease on developing fruit or the overall health of the tree. **See Tropical Fruit:** http://edis.ifas.ufl.edu/topic_tropical_fruit

UF | IFAS Extension

UNIVERSITY of FLORIDA

University of Florida IFAS Extension Central Florida Gardening Calendar - August

What to Plant

Annuals/Bedding plants: The hottest days of summer limit planting to heat-tolerant vinca, coleus, salvia, and celosia. **See Annuals:** http://edis.ifas.ufl.edu/topic_annual_landscape_plants

Bulbs: Aztec lily, butterfly lily, walking iris, and spider lily can be planted any time of the year, even late summer. **See Bulbs for Florida:** http://edis.ifas.ufl.edu/topic_bulbous_flowers

Herbs: Herbs that can be planted from plants (not seeds) include bay laurel, ginger, Mexican tarragon, and rosemary. **See Herbs:** http://edis.ifas.ufl.edu/topic_herbs

Vegetables: Start planting eggplant, okra, peppers, pumpkin, squashes, and tomatoes for the fall garden. **See Vegetable Gardening in Florida:** http://edis.ifas.ufl.edu/topic_vegetable_gardening

What to Do

Palms: Check older fronds for yellowing as it may indicate a magnesium or potassium deficiency. Apply an appropriate palm fertilizer. **See Palm Nutrition and Fertilization:** http://edis.ifas.ufl.edu/topic_palm_nutrition

Vegetables: Solarize the vegetable garden for 4–6 weeks in preparation for fall planting if not done in July. **See Soil Solarization:** http://edis.ifas.ufl.edu/topic_soil_solarization

Poinsettias: Pinch back poinsettias and mums before the end of the month to allow time for buds to form for winter bloom. **See Poinsettias:** http://edis.ifas.ufl.edu/topic_poinsettia

Ornamental plants: Fertilize those plants that show signs of deficiencies. Rapid growth and leaching rains may result in nutrient deficiencies in some plants. **See Nutrient Deficiencies (Landscape Plants):** http://edis.ifas.ufl.edu/topic_nutrient_deficiencies_landscape_plants and **Landscape Fertilization:** http://edis.ifas.ufl.edu/topic_landscape_fertilization

Fertilizer Bans: Numerous municipalities in south Florida prohibit the application of fertilizer to lawns and/or landscape plants during the summer rainy season (June–September). See if such an ordinance exists in your area.

Annuals/Bedding plants: Remove spent blooms, cut back, and fertilize flowering annuals and perennials to extend the bloom season into the fall months. **See Annuals:** http://edis.ifas.ufl.edu/topic_annual_landscape_plants and **Perennial Landscape Plants:** http://edis.ifas.ufl.edu/topic_perennials

WHAT'S FLOWERING in Florida?

NORTH/ CENTRAL

- Firebush* 
Native, evergreen (*Hamelia patens*)
- Crapemyrtle 
Non-native, deciduous (*Lagerstroemia* spp.)
- Hibiscus 
Native & Non-native, evergreen (*Hibiscus* spp.)
- Southern Magnolia 
Native, evergreen (*Magnolia grandiflora*)

* In both North and South.

Bird of Paradise

Non-native, evergreen (*Strelitzia reginae*)

Firebush*

Frangipani

Non-native, deciduous (*Plumeria rubra*)

Orange Geiger Tree

Native, evergreen (*Cordia sebestena*)

Royal Poinciana

Non-native, semi-evergreen (*Delonix regia*)

Wild Olive

Native, evergreen (*Cordia boissieri*)




SOUTH

UF IFAS Extension
UNIVERSITY of FLORIDA



For more information, please visit
GardeningSolutions.ifas.ufl.edu

EDIBLES TO PLANT IN JULY

	North	Central	South
 Survives Transplanting	Peppers Tomatoes		Sweet Potatoes
 Transplant With Care			
 Use Seeds	Cucumbers Okra Peas (southern) Pumpkin	Okra Peas (southern) Pumpkin	

UF IFAS Extension
UNIVERSITY of FLORIDA



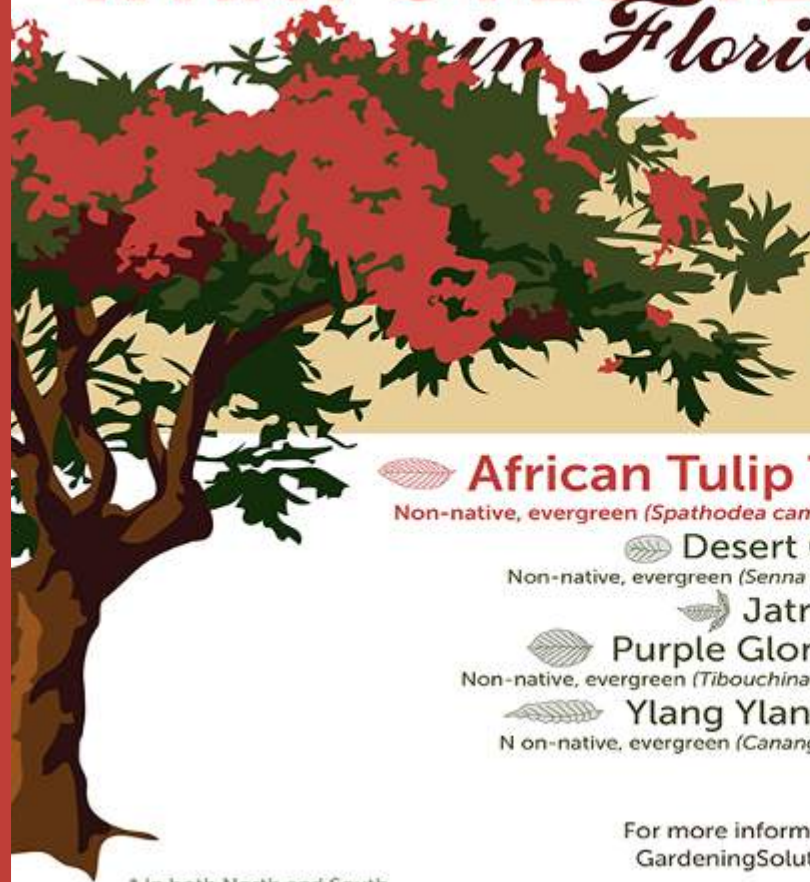
Gardening
SOLUTIONS

For more information, please visit
GardeningSolutions.ifas.ufl.edu

WHAT'S FLOWERING

in Florida?

AUGUST



**NORTH/
CENTRAL**

Jatropha*

Non-native, evergreen (*Jatropha integririma*)

Thryallis

Non-native, evergreen (*Galphimia glauca*)

Plumbago

Non-native, evergreen (*Plumbago auriculata*)

Swamp Mallow

Native, deciduous (*Hibiscus coccineus*)



African Tulip Tree

Non-native, evergreen (*Spathodea campanulata*)



Desert Cassia

Non-native, evergreen (*Senna polyphylla*)



Jatropha*



Purple Glory Tree

Non-native, evergreen (*Tibouchina granulosa*)



Ylang Ylang Tree

Non-native, evergreen (*Cananga odorata*)

SOUTH



UF IFAS Extension
UNIVERSITY OF FLORIDA

For more information, please visit
GardeningSolutions.ifas.ufl.edu



* In both North and South.

EDIBLES TO PLANT IN AUGUST

	North	Central	South
Easily Survives Transplanting	Beets, Broccoli, Brussels Sprouts, Cabbage, Cauliflower, Chinese Cabbage, Collards, Eggplant, Endive/Escarole, Kale, Peppers, Tomatoes	Eggplant, Endive/Escarole, Peppers, Tomatoes	Eggplant, Peppers, Tomatoes
Survives Careful Transplanting	Carrots, Celery, Mustard	Carrots	
Use Seeds	Beans (bush, pole, lima), Cucumbers, Onions (green, shallot), Squash (summer, winter), Turnips	Beans (bush, pole, lima), Okra, Onions (greens, shallot), Peas (southern), Squash (summer, winter)	Okra, Pumpkin, Squash (summer, winter)

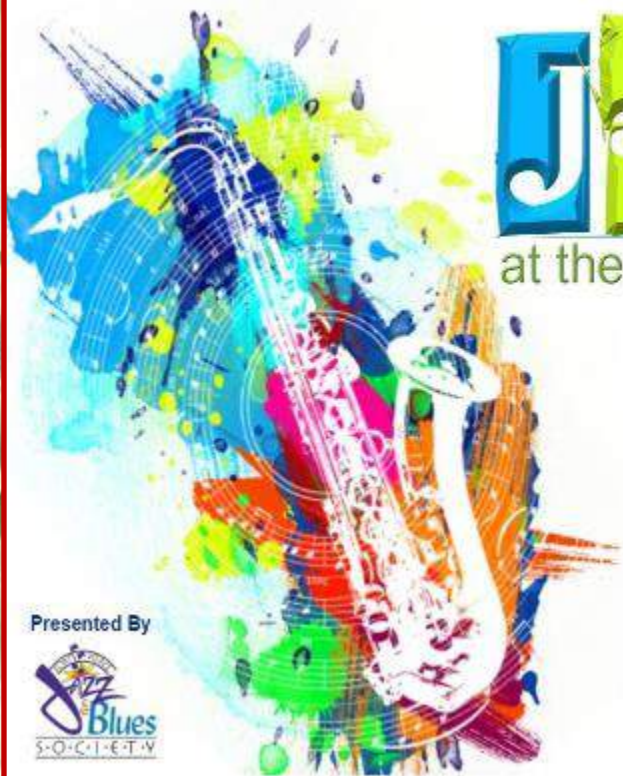


UF IFAS Extension
UNIVERSITY OF FLORIDA



Gardening SOLUTIONS

For more information, please visit
GardeningSolutions.ifas.ufl.edu



Jazz Jams

at the Port St. Lucie Botanical Gardens

WEDNESDAY
JULY 10TH & 24TH
AUGUST 7TH & 21ST
6:30 - 9:30 PM

Presented By



VOLUNTEER HELP NEEDED

**TEAM LEADERS TO ASSIST WITH
LANDSCAPE MAINTENANCE**

Wednesday-Saturday • 10AM - 1PM OR 1PM - 4PM
Sunday • 12PM - 4PM

THIS IS A 4 HOUR, ONE DAY A WEEK COMMITMENT!

Team Leaders will supervise and oversee volunteers in the completion of gardening tasks throughout the Gardens.

The position requires a team player attitude, interpersonal and communication skills, attention to details and project coordination. The Landscape Maintenance Coordinator should have the ability to collaborate with and support the Horticulture Committee. *Training will be provided in all aspects of the maintenance.* **Master Gardeners Welcome!**

What better way to support your **Port St. Lucie Botanical Gardens** and spend time outside in this lovely growing garden. Call Mary Thomas or Brenda Gustafson at 772-337-1959.





STRESS

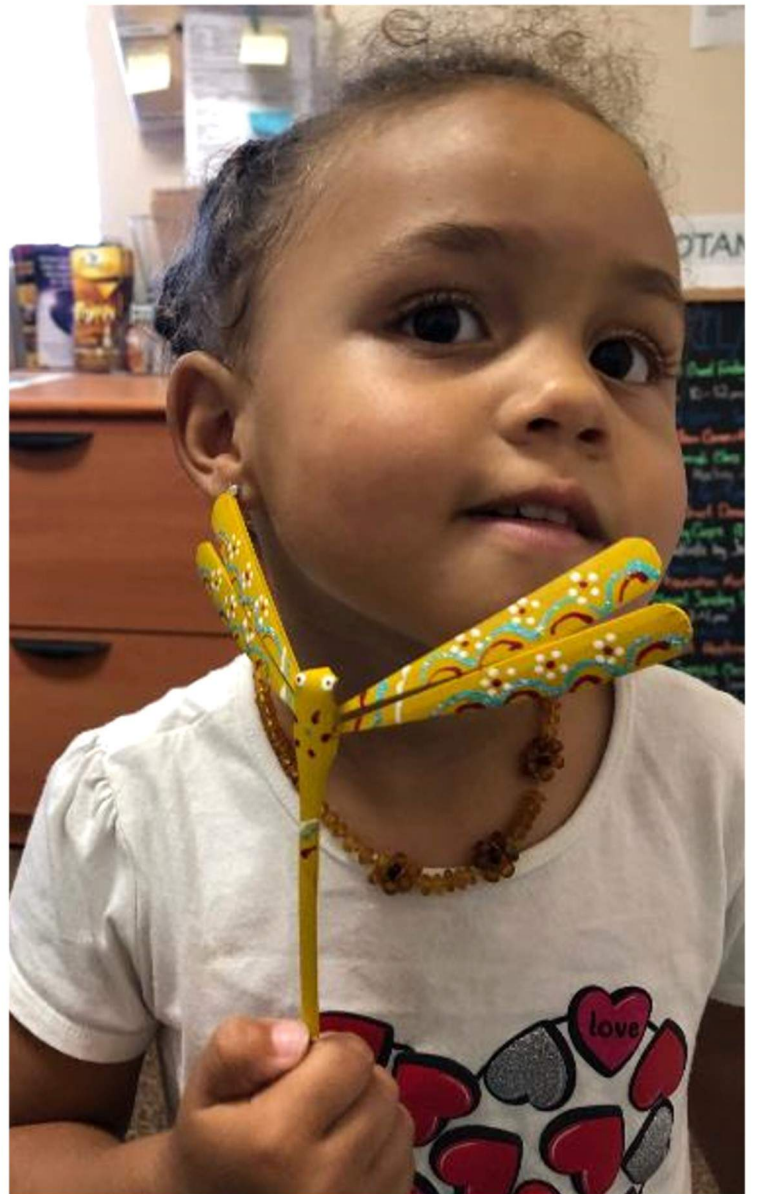


Out & About

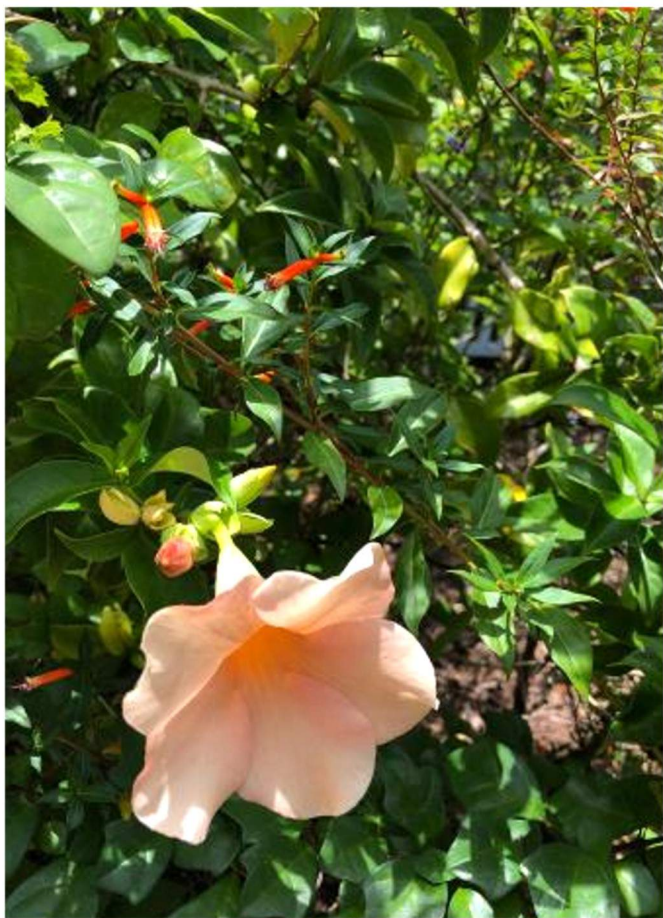


With The Gardens

Seen Around The Gardens & Beyond



Continued on Pg 20



Sparky donating more bromeliads



Orchid Society's presentation to Stephanie Singleton



CALL FOR IMAGES



Due to the success of our branded 'Photo taken at the Port St. Lucie Botanical Gardens', we are in need of donated images from our members or others who have taken outstanding photos at The Gardens. Selected photographs will be used in our Postcard and Card Series for our Gift Shop and on our website sideshow.

If you are interested in donating a photo or two or three, please include hi-res photos together with your full name and the date the photo was taken. Please email to info@pslbg.org, Attn: **CALL FOR IMAGES**.

Copyright credit will be given to the photographer. Friends of the Port St. Lucie Botanical Gardens, Inc. is a recognized 501 (c) (3) not-for-profit organization. All donations are tax deductible to the extent allowed by law.

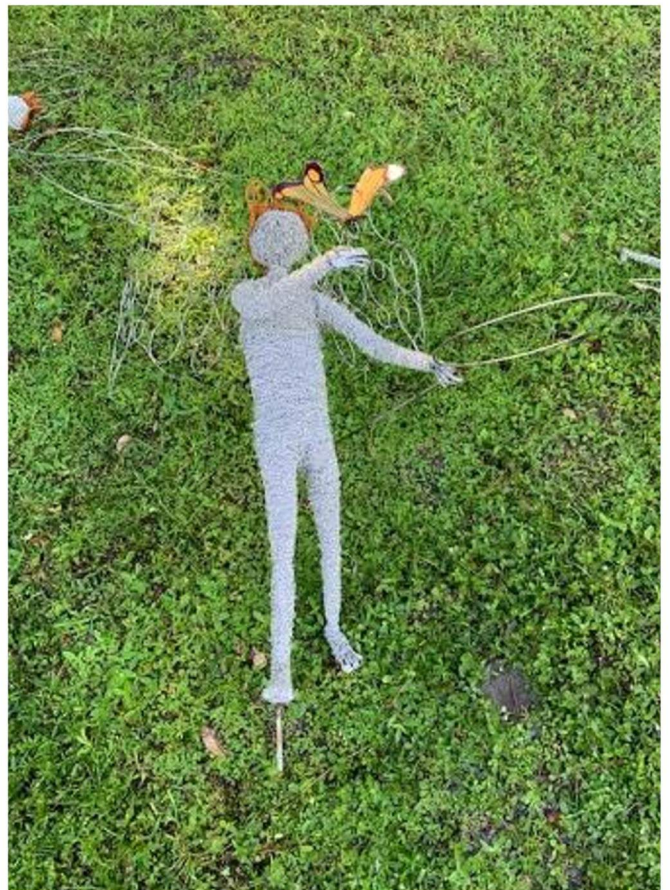


PSL Orchid Society's presentation to Volunteer Stephanie Singleton for a \$1,000 Scholarship. Facilitated between the Friends of the PSL Botanical Gardens and PSL Orchid Society.



Dana DeMarco, Stephanie Singleton & Melinda DeMarco

The Faerie Forrest Comes To Life









A background image of several ripe mangoes hanging from a tree with green leaves. The mangoes are in various stages of ripeness, showing green, yellow, and red hues.

FRUIT TREES

**MANGOS
AVOCADOS
LEMON
LIME
STAR FRUIT
JACK FRUIT
PAPAYA
BANANAS AND MORE**

FREE CLASSES

Complete list at pindersnursery.com
Must register for all classes.

**Pinder's
Nursery**
Palm City, Florida

A stylized logo for Pinder's Nursery featuring a green stem with three leaves and three flowers: a yellow one at the top, a red one in the middle, and a pink one at the bottom.

...growing flowers, food and friendships!

Monday - Saturday 9 - 5

Sunday 10 - 4

Since 1975, Locally Owned & Operated
5500 SW Martin Hwy. Palm City

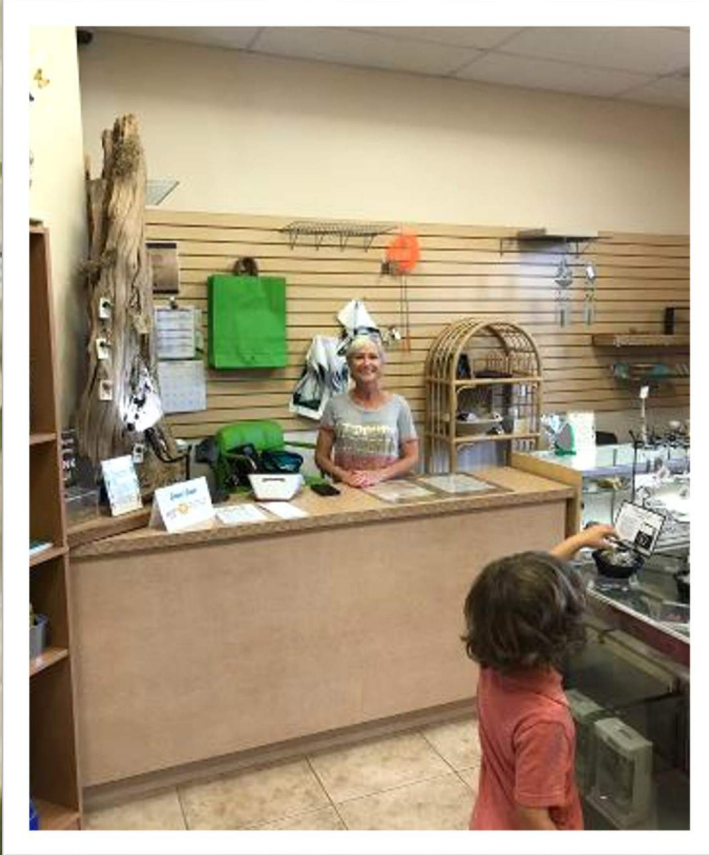
772-781-8085



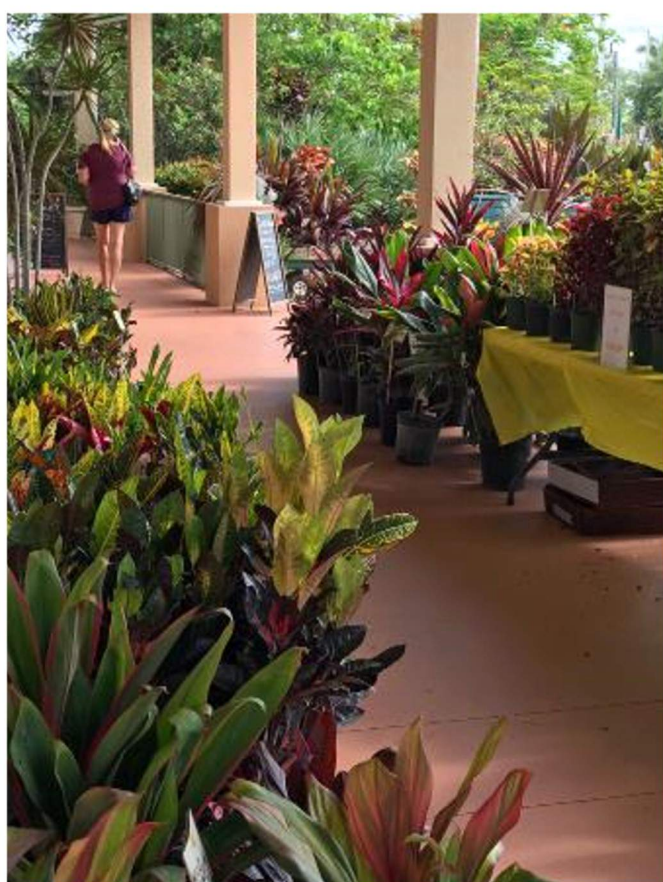
Wedding Time



Taste of the Tropics and Plant Sale











SCOTT A. BARNABY, PGA
REALTOR® Sales Associate
PGA Professional

917-797-3304 (Direct)
772-340-4000 (Office) • 772-340-1557 (Fax)
ScottBarnabyGolf@PGA.com
"Connecting People to Property"



THOMAS J. WHITE
REALTY

1555 NW ST. LUCIE WEST BLVD.
SUITE 103
PORT ST. LUCIE, FL 34986



www.ThomasJWhiteRealty.com Each Office is Independently Owned and Operated

**VISIT OUR
WEBSITE**



**"like" us on
facebook**



**PORT ST. LUCIE
PARKS &
RECREATION**



THE SAINTS

At Port St. Lucie Golf Course
www.CityofPSL.com/Golf

2601 SE Morningside Blvd. • (772) 398-2901
Port St. Lucie, FL 34952 • Fax: (772) 398-2778



Mark A. Barnes
Making You & Your business Look Great

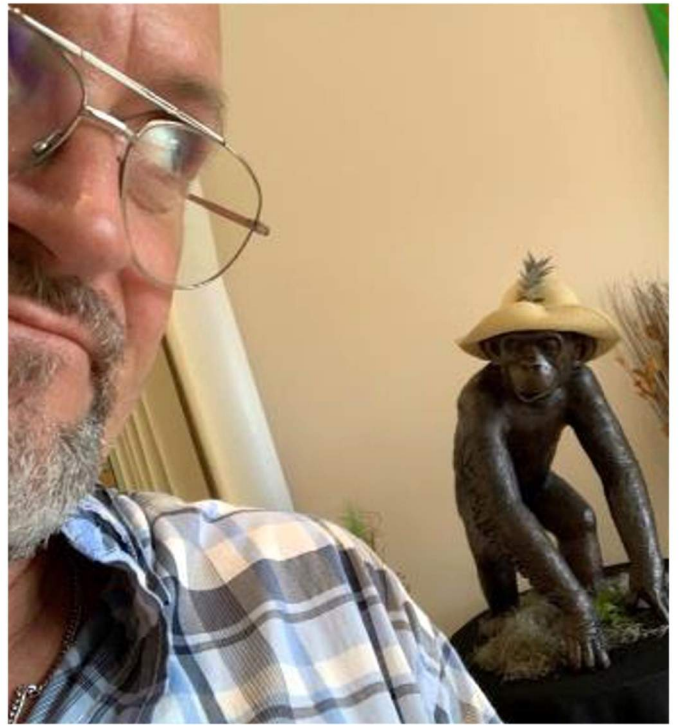
772.801.8800
Mark@MarkBarnesMusic.com

Business Card Designs
Logo Designs
Graphic Designs
Specialty Cards
Real Estate Ads & Designs
Video Home Tours
Basic Web Sites
Copyright Services
ASCAP & Music Site Setup
QR Code Design
Video Bios and Resumes
Power Point Presentations
Virtual Assistant
Real Estate Services

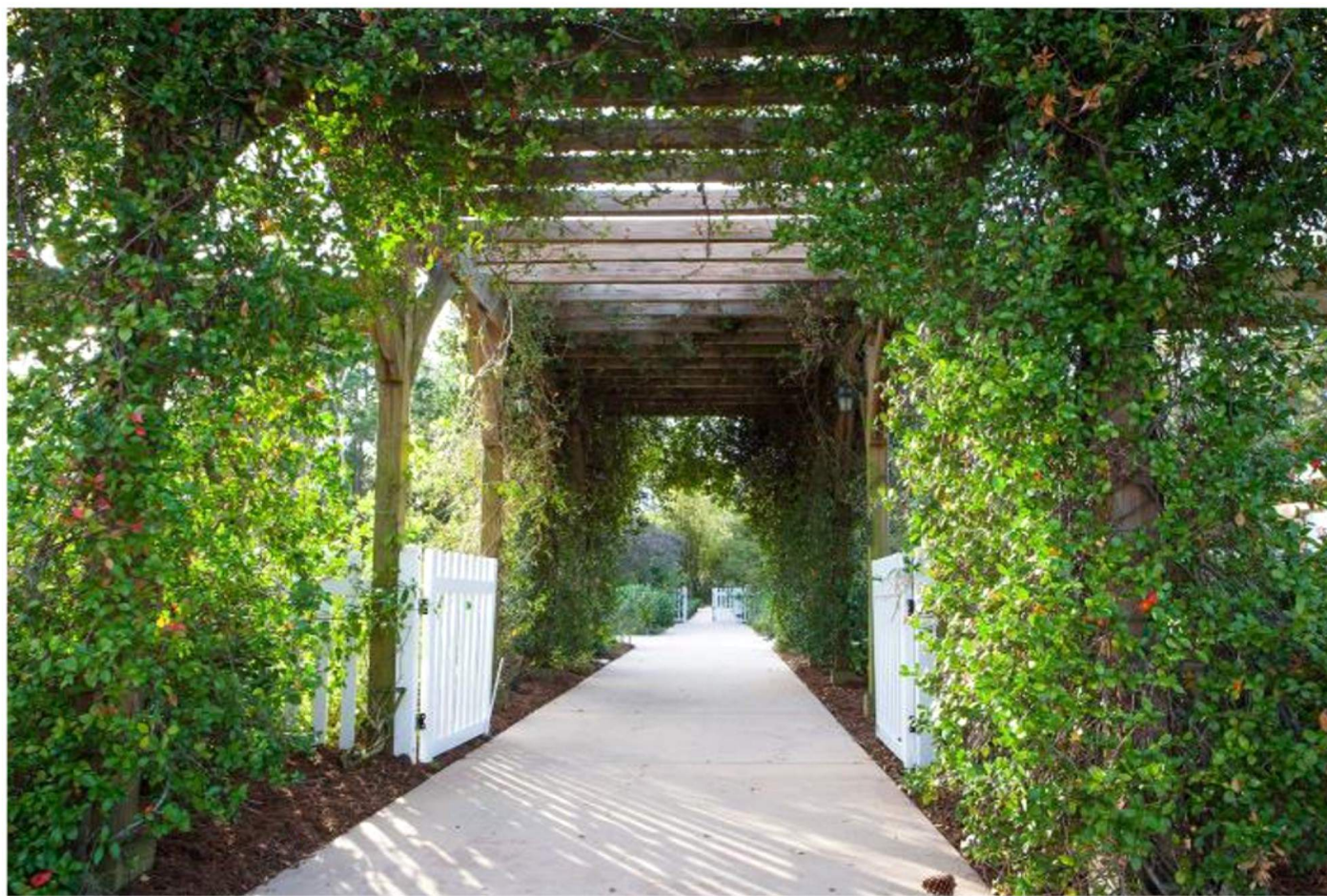


Visitor Pics















GLHOMES®

WELCOME HOME

GL Homes

**VALENCIA CAY AT RIVERLAND
PORT ST. LUCIE**

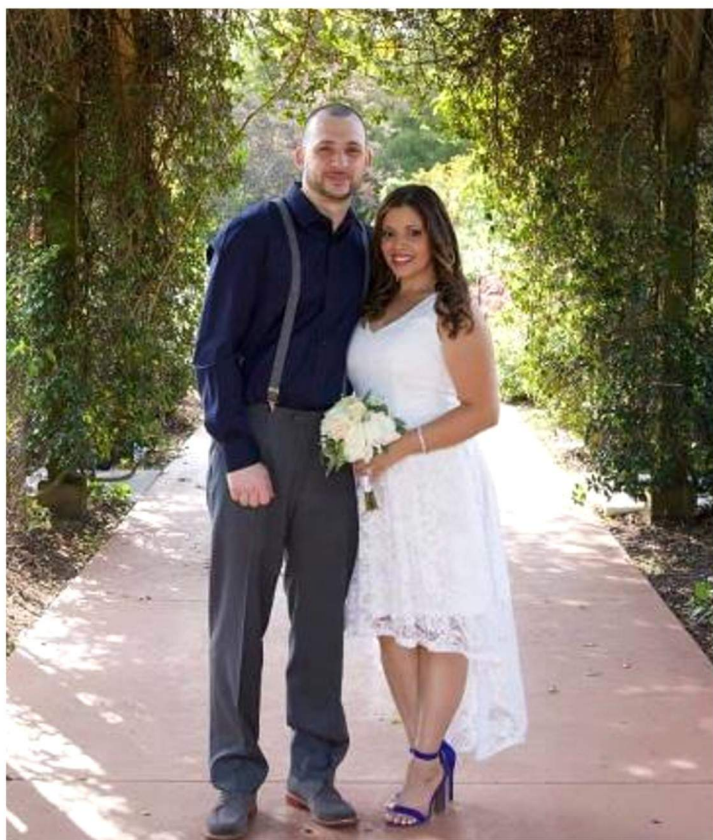
55+ Lifestyle
from the \$200s
(772) 226-9000

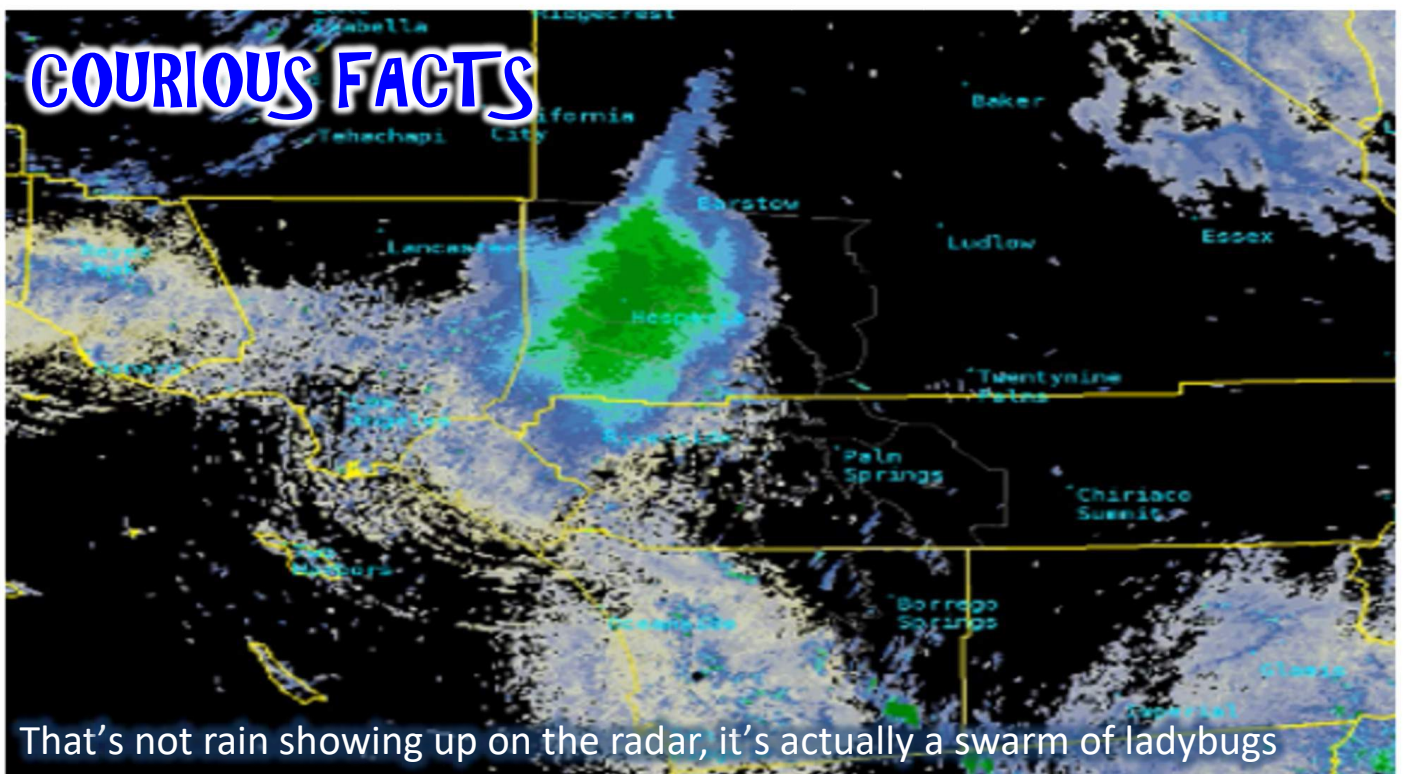
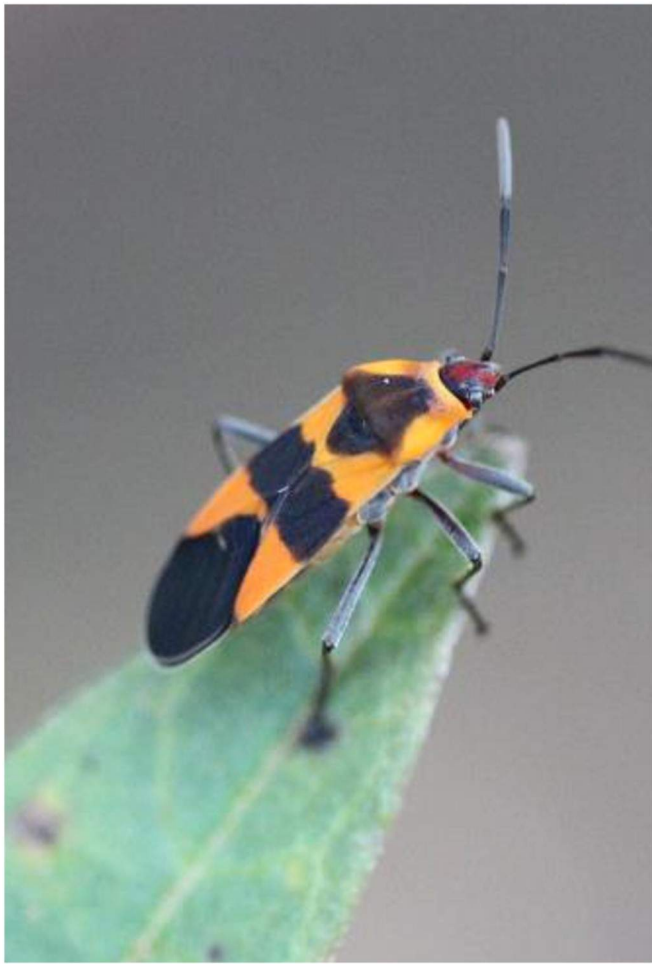


©2018 Pricing subject to change without notice. An equal housing opportunity. 0500-439 9-4-18













Port St. Lucie Historical Society

Port St. Lucie Historical Society

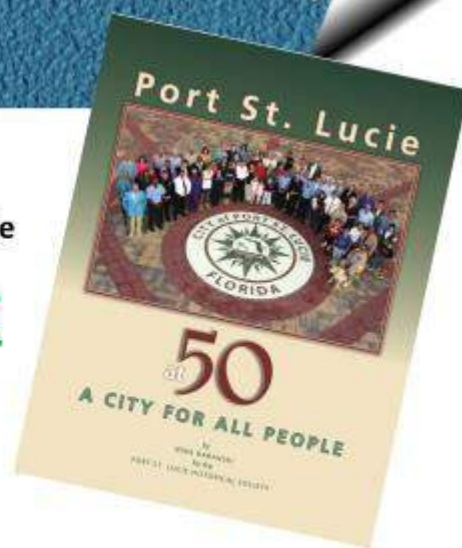
Find lots of memories and surprises when you explore our web site



pslhistory.org



Follow us on
[Facebook](https://www.facebook.com/pslhistory.org)



GUETTLER BROTHERS CONSTRUCTION



WWW.GUETTLERCONSTRUCTION.COM



2410 SE Westmoreland Boulevard
Port Saint Lucie, FL 34952
772.337.1959

www.PSLBG.org
info@pslbotanicalgardens.org

Attention: all Civic groups, garden societies, homeowners associations, local businesses, et al. Join the Friends of the Port St. Lucie Botanical Gardens this Halloween for a public "Trick or Treat" among the trees. We need your organization to join us in this fun 2.5 hours of welcoming the Ghouls and Goblins of Port St Lucie for our Trick or Treat Ramble and Haunted Hayrides* at The Gardens in a safe, controlled, no-cars atmosphere.

*Scary for young children, parental discretion advised.

Who's invited? Children, ages 0-13, in costume and their parents. **No admission - this is a free event.**



Trick or Treat Ramble in The Gardens

THURSDAY • OCTOBER 31, 2019

What does your group have to do? Claim your assigned "fright Site" in the Gardens, set up a table, decorate as much as you'd like, staff your location with costumed volunteers who enjoy (and perhaps miss) the joy of Halloween and the costume parade we all remember from Halloweens past. **And bring lots of candy! Your organization will be responsible for having sufficient candy, snacks or treats for up to 4000 little ghouls and goblins.**

Your area in the Garden is **FREE**. Your group must supply their own table and decorations.

Are you an HOA, 55 and older? Miss seeing the children? Are you a City Department that would like to adopt a site to be manned by co-workers? A garden society of retired grandparents whose grandchildren are miles away, and are missed? Are you a local business that recognizes an opportunity for team building and community outreach? A civic group or club, looking for a fun, simple new event on your Fall calendar? This is an event for you!

Trick or treating will begin at 4:30 and end at 7:00 pm. Parents, accompanying their children will be required. No children without parents will be allowed on Garden property. Sunset on October 31st is 6:38 pm in Port St Lucie FYI. This is designed to be an evening/twilight event.



Please give this opportunity your attention; talk with friends and neighbors, decide to commit to this new Community event, and send us your commitment via email. Event will be advertised through the Gardens website & newsletter, on-line calendars, community radio and more.

For more Information, to become a Sponsor or to Register, please call Heather Furnari at 772.337.1959.

Are you a Member of Friends? Friends Membership is...



Horticulture



Education



Community



Preservation



**Friends of the Port St. Lucie Botanical Gardens, Inc.,
We Are A Growing Community!**



**Click Here to
Join or Renew Your
Membership Today**

Become A Faerie Forrest Sponsor

Sponsorship Levels

\$10,000 - Sponsor The Forrest

Primary Sponsor with subtle signage, recognition on the FPSLBG website & promotional rack card, and a Full Page Newsletter Ad for 2 years.

\$750 - Faerie Faenatic

Opportunity to name one of the Faeries, recognition on the FPSLBG website & promotional rack card.

\$100 - Faerie Friend

General Donation to support The Gardens with recognition on the FPSLBG website.

Sponsorship opportunities for Faerie Faenatics, including a corporate sponsorship, are available for a limited time. Are you interested in becoming a Faerie Faenatic or a Corporate Sponsor? Call us today at 772-337-1959 or click the link below.

