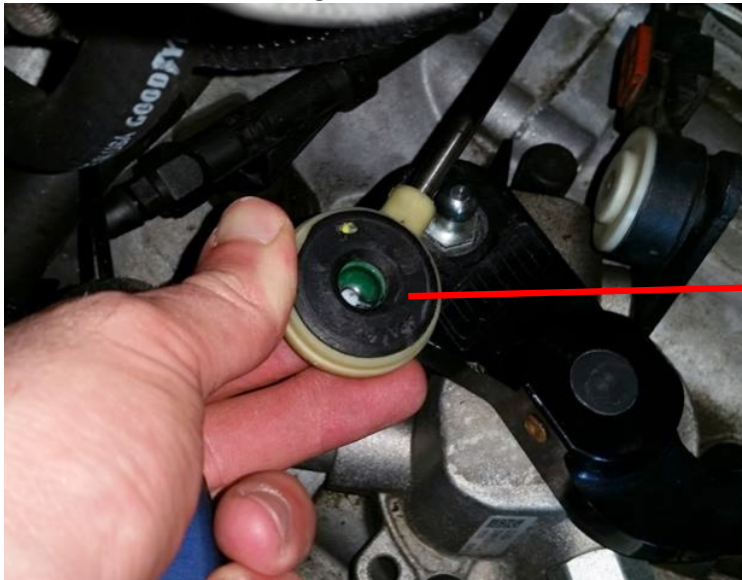




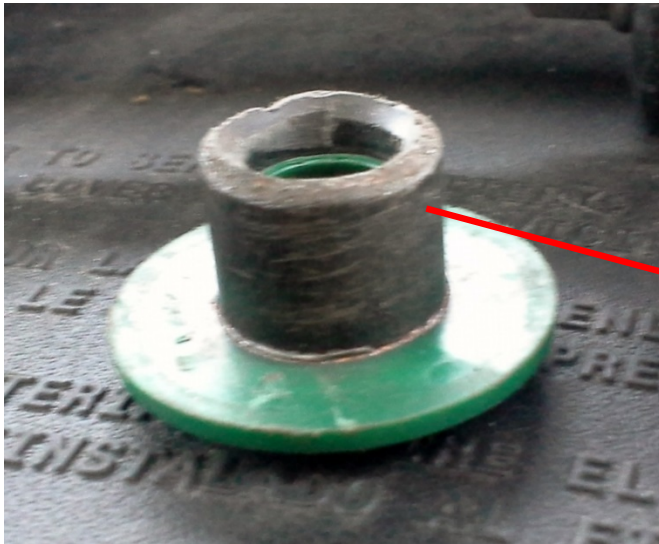
Focus ST Shift Cable Bushing

- 1) Disconnect the cable end from the shift ball by gently prying upward.
- 2) Turn the cable over and carefully BREAK off the BLACK, bottom lip of the bushing retainer (DO NOT TOUCH GREEN SIDE). This is to disassemble the cable end and gain access to the stock bushing.



Use a flat blade screw driver to **BREAK OFF** this Black flange lip and disassemble the cable end.

- 3) Discard the stock, soft rubber bushing and the below picture shows what you should have left.



This Black shaft is what remains after the bottom lip has been removed per step 2. It is critical that this portion remains firmly onto the Green part of the bushing retainer.

- 4) By hand press in the new bushing from the BOTTOM of the cable end as shown below. DO NOT USE ANY LUBRICATION. Bushing flange MUST be flush to cable end.



STEP 4

5) Then install the remainder of the stock bushing retainer (Green) from the TOP as shown until it's firmly in place. This should easily be done by hand:



6) Here's how it looks when properly assembled. Reattach the cable end to the shift ball and you're done. NOTE: Both the Green OEM retainer and NTC bushing are to be tight against the cable end.



If you have any questions or concerns please do not hesitate to contact us.

Email: dave@needlesstorque.com

<https://www.facebook.com/needlesstorque>