

# News and Views



Volume 38  
Issue 6

News & Views is published bi-monthly - by the Auxiliary for the Auxiliary,  
224 38th Street West Des Moines IA 50265

We are a proud member of the APWU Postal Press Association

Color editions of News and Views may be viewed on the Auxiliary Website:  
[www.apwuauxiliary.org](http://www.apwuauxiliary.org)

## July-August 2022

### The 4-year term is ending, so what was accomplished

By: Trisa Mannion-President



A lot happened in the last few years. The first few months of the new term in 2018 were spent moving offices, setting up financial accounts, and making the dreams we had become a reality. We closed out the last term, published the Constitution, and finalized the minutes and records from the convention.

We held the first board meeting for the term in Minneapolis, trained, set goals, and prepared for the upcoming convention season. New goals laid the groundwork for our dreams, and the actions started them in the right direction. We promised more communication to the members, so we ramped up the Ziplines. We received requests for training, so we provided training. The Handbook was due for an overhaul and update that took a little longer than expected, but it was completed.

Early in 2020, our work began for the preparation of the National Convention. We had organizing plans to build the membership and activate the states and locals. We did not foresee the pandemic.

Suddenly, the actions taken to increase communication became our lifeblood. We had already implemented several recurring ZOOM meetings and were familiar with the programs. We jumped into high gear with them, and the membership responded by participating in the programs, training, strategy sessions, and the state conventions held in Indiana and Oregon.

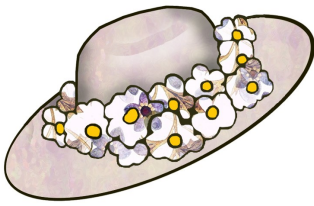
We soon faced a bigger fight to save the USPS. The members responded by sending thousands of postcards and letters, making phone calls, and networking with friends outside the Postal Service. We implemented the Red, White and Blue campaign. The “We Love Our Post Office” clings sold in large quantities. People inside and outside of our organization rallied to Dump DeJoy. I believe the people of

cont. on page 2

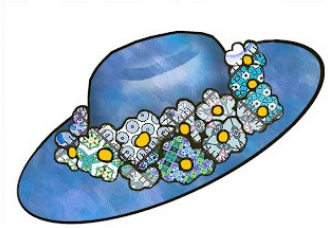
#### Inside this issue:

<b>Hats off to you!</b> The 4-year term is ending, so what was accomplished cont. Independence Day	2
<b>National Convention Schedule</b> Convention Classes	3
<b>Award-winning!</b>	4
<b>Illinois has a new Bridgebuilder</b> Convention Committees Zipline	5
<b>Book of Memories form</b>	6
<b>APWU Health Plan</b>	7
<b>Human Relations Project</b> Last call for Credentials	8

## Hats off to you!



Join us for a red, white, and blue luncheon on Wednesday August 18 at 1:30. In addition to great food, we will have some award presentations and a special speaker. This will be a great time to relax and socialize. Tickets are \$30.00.



cont. from page 1

the nation stood behind the Postal Service because they value the service provided. Vote by Mail came under attack, and again the Auxiliary members stood and fought back.

We saw record donations to the Fisher House fund and were on our way to the unprecedented \$100,000 total expected by the close of the 2022 convention.

We have welcomed over a thousand new members, three new locals, two 100% locals, one 100% state, and many active members during the last four years. The pandemic slowed us down, but the APWU support helped us grow and flourish despite the pandemic.

Greeting members in person this year was a heartwarming experience. We missed each other and the fun of the work we do when we can gather. This upcoming national convention will find us enthusiastic about doing our best to ensure the pandemic or anything similar can not destroy the Auxiliary.

If you are not attending the convention, there are things that you can do. Keep attending the ZOOM meetings to stay informed, read the News & Views for updates, and subscribe to the News Flash.

The elections are just around the corner for Senators, Congressional Representatives, and many state and local officials. They need help to ensure we have people representing the union and Auxiliary values. You can participate from home or at the regional offices. Make sure you are registered to vote.

Credentials need to be sent to the National Secretary by July 16. Get engaged in the process and volunteer to serve on a committee. Voting in upcoming elections or running for one of the positions is a great way to be involved.

Many of you sent resolutions for the delegates to consider. We will report the results to you through News & Views.

This organization is too strong for a little pandemic to knock us down. You have accomplished a lot despite the circumstances. Congratulations!

Thank you for entrusting me with the Presidency of this fine organization for the last four years. It has been an honor to serve the Auxiliary in this capacity. Let's make this a great convention!



## Independence Day

The Declaration of Independence was signed on July 4, 1776, officially giving the thirteen US colonies freedom from the British Monarchy. Britain was a superpower at that time, so this was huge. Americans fought for their freedom at all costs. The 4<sup>th</sup> of July is a national holiday, and rightly so, full of family fun, fireworks, and parades. Still, it's important to remember the sacrifices to gain that sovereignty. Freedom has never come easy.



# National Convention Schedule



Sunday - Aug. 14	Labor Ed for Kids Communication	10:00-1:00 10:00-2:00
Monday - August 16	Joint session with APWU Auxiliary Opening Session (State Day)	10:00-12:00 1:00-4:30
Tuesday - August 17	Auxiliary General Session Nominations	9:30-4:30 last order of business
Wednesday - August 18	Memorial Service Auxiliary General Session Elections Auxiliary Luncheon	9:00 10:00 10:00-11:30 11:30-1:00 1:30 (tickets \$30.00)
Thursday - August 19	Auxiliary General Session Installation of Officers	9:30 last order of business

## Classes

### Communication

Learn how to communicate successfully. This class is open to anyone who wants to learn how to effectively get their thoughts and ideas across to their listeners. We will cover speech-giving and the written word as well as the many avenues of social media. We will have a PowerPoint demonstration and hands-on practice.

### Labor Ed for Kids

The make believe Yummy Pizza Parlor is in need of employees. Young participants will have the option to join a union and pay dues for better wages and work conditions. This class is a hands on experience teaching youths the value of being in a union. And there is pizza!

### Flip Flopping Your Way into First Timers

A national convention can be daunting for first timers and veterans alike. Whether this is your first convention or fifth, we want you to be comfortable and informed so that you can get the most out of your experience. Participants will learn what to expect while attending the convention and will have the chance to learn and practice Roberts Rules. Our theme is flip flops. Wear your flip-flops! You could win a prize. Decorate them yourselves? Even better.





# Award-Winning!

By: Janice Gillespie-Legislative Aide-Editor

**WORKING  
CLASS  
HERO**

The American Postal Workers Union, along with 56 other national and international labor unions, is a proud member of the American Federation of Labor and Congress of Industrial Organizations (AFL-CIO).

This organization has a network of 12.5 million working people comprising state federations and labor councils. These organizations are the heart of the labor movement.

Our past National President Doris Poland has recently received the prestigious “Working Class Hero Award” from the Maine AFL-CIO for volunteering wherever she is needed. Doris is on the Maine AFL-CIO Executive Board and the Southern Maine Labor Council. She has been a union member for 55 years and has a passion for worker’s rights that is unparalleled.

Doris’s husband, Wayne, started working for the Postal Service in 1967 and became active in the union. He participated in the wildcat strike in 1970 that led to the formation of the Postal Reorganization Act. Doris played a pivotal part in the illegal strike, supporting her husband and the more than 200,000 other postal workers across the country. Through the years, Doris joined the union’s Auxiliary and served in many capacities as local, state, and national officers.

Doris was instrumental in unionizing the staff in the school district, where she worked as a bus driver and fought to get labor history books in the library, where she worked as a librarian.



Doris Poland doing door-to-door canvassing in the rain in 2020

Retirement in 2002 did not slow Doris down. Always a fierce advocate for workers and human rights, she is incredibly passionate about teaching the younger generations about unions and the labor movement. When Doris joins an organization, you can be assured that she will be an active participant and advocate for its causes.

Doris is a regular participant on the Auxiliary Ziplines and is a knowledgeable resource for all of us. She is remarkable, and the Auxiliary has always been better because of her. She is a perfect example for new and veteran members alike.

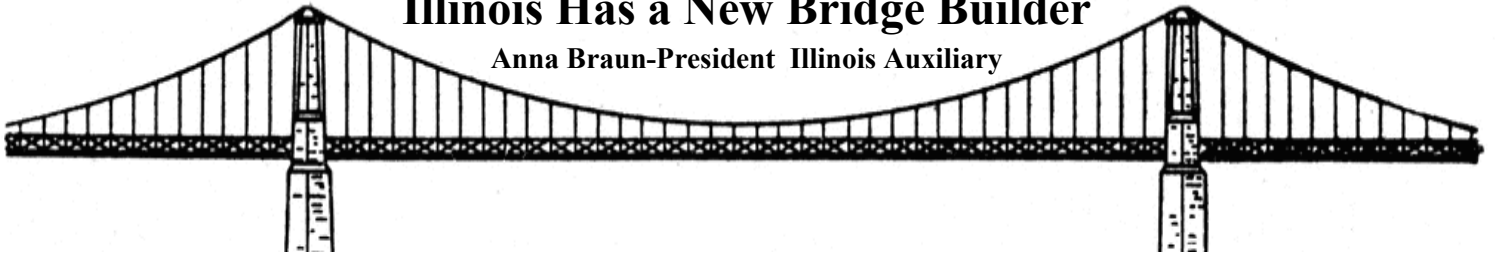
Congratulations on your award, Doris. You have earned it.



Doris Poland with her son Joe & late husband Wayne Poland in 2017.

# Illinois Has a New Bridge Builder

Anna Braun-President Illinois Auxiliary



At the Illinois Postal Workers Convention in April, Vicky Crouse of the 604-605 Area Local was recognized by the National Auxiliary for all she does for the union, the Auxiliary, and her community. Vicky was to be recognized in 2020, but Covid 19 postponed the presentation. We were fortunate to have District 5 Coordinator Donnita Cameron, from Warren, Michigan, give Vicky her award. Since its inception, Vicky has joined nine other Illinois union and Auxiliary members in receiving this award.

The Bridge Builder award is a prestigious award. Only one person per year, per state, is eligible for this award. This award is open to any APWU or Auxiliary member who fits the criteria. It is to reward those who have, and still are, helping the Auxiliary or the union and are active in human relations, legislation, political action, public relations, and organizing/recruitment. The forms can be found on the Auxiliary website, [www.apwuauxiliary.com](http://www.apwuauxiliary.com).



---

## Convention Committees

The News and Views Special Edition included a list and description of the convention committees. Please take a look at them and decide which ones appeal to you. Then, number your choices on your credentials before sending them in. Maybe you have been on a committee before and can offer experience and insight, or perhaps you want to try something different. All committees will have a National Officer as an advisor.



## Next Zipline

**August 2, 2022**

**8:00 pm ET**

**<https://zoom.us/j/93199666271>**

**Meeting ID: 931 9966 6271**



# Auxiliary to the American Postal Workers Union

In Memory of: \_\_\_\_\_

Last known residence: City: \_\_\_\_\_ State: \_\_\_\_\_

List any titles held in APWU or Auxiliary:  
\_\_\_\_\_

Please list name **EXACTLY** as you want it to appear in the Book of Memories

Submitted by: \_\_\_\_\_

Local/State APWU, Auxiliary: \_\_\_\_\_

Address: \_\_\_\_\_

Send Acknowledgement card to (if different):

Name: \_\_\_\_\_

Address: \_\_\_\_\_

City: \_\_\_\_\_ State: \_\_\_\_\_ Zip: \_\_\_\_\_

Is this a COVID-19 related death? Yes

\$10.00 Minimum Donation Suggested Amount Enclosed: \_\_\_\_\_

Make checks payable to: Auxiliary to the APWU

Mail checks to:

Auxiliary to the APWU  
2836 Highway 88  
Minneapolis, MN 55418-3243

All proceeds go to the Nilan Scholarship

*Please Print or Type*

**Deadline for submissions is July 15, 2022**



## BREAST & CERVICAL CANCER

You may already know that breast cancer and cervical cancer are most prevalent among women but did you know that both can be treated if detected early or even prevented? With regular screenings, breast cancer can be detected early and treated, achieving survival probabilities of 90% or higher. And regular Pap tests can detect precancerous conditions of the cervix so they can be monitored or treated in order to prevent cervical cancer.

### WHAT IS CANCER?

Cancer is a disease in which some of the body's cells grow uncontrollably and spread to other parts of the body. Cancer can start almost anywhere in the human body, which is made up of trillions of cells. Normally, human cells grow and multiply (through a process called cell division) to form new cells as the body needs them. When cells grow old or become damaged, they die, and new cells take their place. Sometimes this orderly process breaks down, and abnormal or damaged cells grow and multiply when they shouldn't. These cells may form tumors, which are lumps of tissue. Tumors can be cancerous or not cancerous (benign).



which some of the body's cells grow uncontrollably and spread to other parts of the body. Cancer can start almost anywhere in the human body, which is made up of trillions of cells. Normally, human cells grow and multiply (through a process called cell division) to form new cells as the body needs them. When cells grow old or become damaged, they die, and new cells take their place. Sometimes this orderly process breaks down, and abnormal or damaged cells grow and multiply when they shouldn't. These cells may form tumors, which are lumps of tissue. Tumors can be cancerous or not cancerous (benign).

**Breast cancer** is always caused by a genetic abnormality (a "mistake" in the genetic material). However, only 5-10% of cancers are due to an abnormality inherited from your mother or father. Instead, 85-90% of breast cancers are due to genetic abnormalities that happen as a result of the aging process and the "wear and tear" of life in general.

Various strains of the human papillomavirus (HPV), a sexually transmitted infection, play a role in causing most **cervical cancer**. When exposed to HPV, the body's immune system typically prevents the virus from doing harm. In a small percentage of people, however, the virus survives for years, contributing to the process that causes some cervical cells to become cancer cells.

**Cancer is among the leading causes of death worldwide. In 2018, there were 18.1 million new cases and 9.5 million cancer-related deaths worldwide.**

**By 2040, the number of new cancer cases per year is expected to rise to 29.5 million and the number of cancer-related deaths to 16.4 million.**

### HOW CAN THE APWU HEALTH PLAN HELP?

Whether you're enrolled in the High Option Plan or the Consumer Driven Option Plan, as long as you stay in-network, all preventive care is covered at 100% including:

Cancer screenings approved by the U.S. Preventative Service Task Force

Well woman care such as Pap smears and annual counseling for sexually transmitted infections

Routine mammograms – as follows:

From age 35 through 39, one during this 5-year period

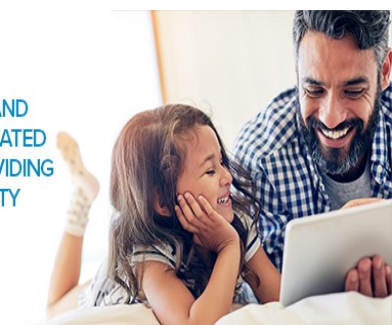
From age 40, one every calendar year

So don't hesitate and do your part to help detect cancer before it's too late. Get screened today!

**Sources:** cancer.gov; mayoclinic.org; breastcancer.org; who.int



APWU HEALTH PLAN PARTNERS WITH POSTAL AND FEDERAL FAMILIES TO CREATE A LIFESTYLE DEDICATED TO HEALTHY LIVING. WE ARE COMMITTED TO PROVIDING OUR MEMBERS WITH INNOVATIVE HIGH-QUALITY PRODUCTS AND SERVICES.



Do you have the next

## Human Relations Project?

By Anna Braun-President Illinois State

In less than two months, we will be gathering for the 2022 Auxiliary Convention in National Harbor, Maryland. It has been a long time, and it is time to bid farewell to the current Human Relations Project, Fisher House, which was chosen at the 2018 convention in Pittsburgh.



So, do you have a great organization you think will be the type of project we can get behind? Then, submit your chosen organization for consideration to a board member and do it now, so there is time for them to do some research. That is how Fisher

House, the Wounded Warrior Softball Team, and the Feeding America Backpack programs were chosen. Someone had a great idea and brought it forward.

Here are a couple of “rules” to consider: 1) should be an organization that operates across the nation, not regionally, 2) have a less than 10% administrative expense ratio, and 3) not be a well-funded organization. That last one is because we all know that Ronald McDonald House and St. Jude’s have well-established funding. So we want to be able to help an organization that is doing an excellent job, but that is not well-known because they are an up-and-coming organization.

When Fisher House was selected, there was discussion because there were states without a Fisher House. However, there was a Fisher House within a reasonable distance of the states without one.

Remember that most of us had never heard of the Fisher Houses before the last convention, but because we learned about what they do for our military, veterans, and their families when they need a “home away from home,” this has been a successful project.

So, whether our next project highlights children’s issues, veterans, or any other vital causes, make sure you are part of that decision-making process.



## Last Call for Credentials

Please send in your credentials if you have not done so already. We ask that you copy them in triplicate. One copy must reach the National Secretary in Des Moines, Iowa, by July 16, 2022, one is to be given to the organization that nominated the delegate, and one must be presented at the National Convention for the member to be seated. The President and Secretary of the State or Local Auxiliary must sign all copies. Member at Large (MAL) and Local Without Leaders (LWOL) credentials only need the member's signature. Follow the instructions on the credential.

## National Officers

**PRESIDENT** Trisa Mannion  
**970-424-5131** (fax) **970-424-5856**  
3038 Cloverdale Ct  
Grand Junction, CO 81506-1960  
[tmannion@apwuauxiliary.org](mailto:tmannion@apwuauxiliary.org)

**SECRETARY** Karen Wolver  
**515-771-7183**  
4631 NE 29th St  
Des Moines, IA 50317-4833  
[kwolver@apwuauxiliary.org](mailto:kwolver@apwuauxiliary.org)

**TREASURER** Bonnie Sevre  
**612-788-3440** (cell) **612-889-4111**  
2836 Highway 88  
Minneapolis, MN, 55418-3243  
[bsevre@apwuauxiliary.org](mailto:bsevre@apwuauxiliary.org)

**LEGISLATIVE AIDE EDITOR** Janice Gillespie  
**515-664-1154**  
224 - 38th Street  
West Des Moines, IA 50265-3917  
[jgillespie@apwuauxiliary.org](mailto:jgillespie@apwuauxiliary.org)

**DISTRICT 1** Vacant  
Please contact President Mannion  
AK, ID, MT, OR, WA,  
[tmannion@apwuauxiliary.org](mailto:tmannion@apwuauxiliary.org)

**DISTRICT 2** Rebecca Kingsley  
**562-355-3308**  
8502 Duchess Drive  
Whittier, CA 90606-3335  
AZ, CA, CO, HI, NM, NV, UT, WY  
[rkingsley@apwuauxiliary.org](mailto:rkingsley@apwuauxiliary.org)

**DISTRICT 3** Kath Walker  
**651-395-0919**  
1363 Roselawn Ave W  
Roseville, MN 55113-5823  
IA, KS, MO, MN, NE, ND, SD  
[kwalker@apwuauxiliary.org](mailto:kwalker@apwuauxiliary.org)

**DISTRICT 4** Debra Stewart  
**817-534-9130** fax **817-534-2279**  
6400 Guilford,  
Fort Worth, TX 76119-7111  
AR, LA, MS, OK, TX  
[dstewart@apwuauxiliary.org](mailto:dstewart@apwuauxiliary.org)

**DISTRICT 5** Donnita Cameron  
**248-878-6538**  
13342 Diena Dr  
Warren Mi 48088-6654  
IL, IN, KY, OH, MI, WV, WI  
[dcameron@apwuauxiliary.org](mailto:dcameron@apwuauxiliary.org)

**DISTRICT 6** Arline Holmes  
**804-266-2451**  
8205 Tarkington Dr  
Richmond, VA 23227-1448  
AL, FL, GA, NC, SC, TN, VA  
[aholmes@apwuauxiliary.org](mailto:aholmes@apwuauxiliary.org)

**DISTRICT 7** Lisa Beer  
**610-762-5759**  
3006 N 5th Ave  
Whitehall, PA 18052-7404  
CT, DE, ME, MD, MA, NH, NJ, NY, PA, RI, VT  
[lbeer@apwuauxiliary.org](mailto:lbeer@apwuauxiliary.org)