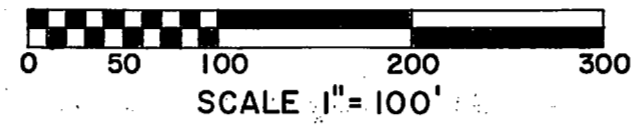


ASSESSOR'S PLAT NO. 2 VILLAGE OF ARLINGTON

THE SOUTH 1/2 OF THE S.W. 1/4 AND PART OF THE NW. 1/4 OF THE SW. 1/4 OF SECTION 13, AND
THE N.E. 1/4 OF THE NW. 1/4 AND PART OF THE NW. 1/4 OF THE NW. 1/4 OF SEC. 24, T.10N., R.9E.

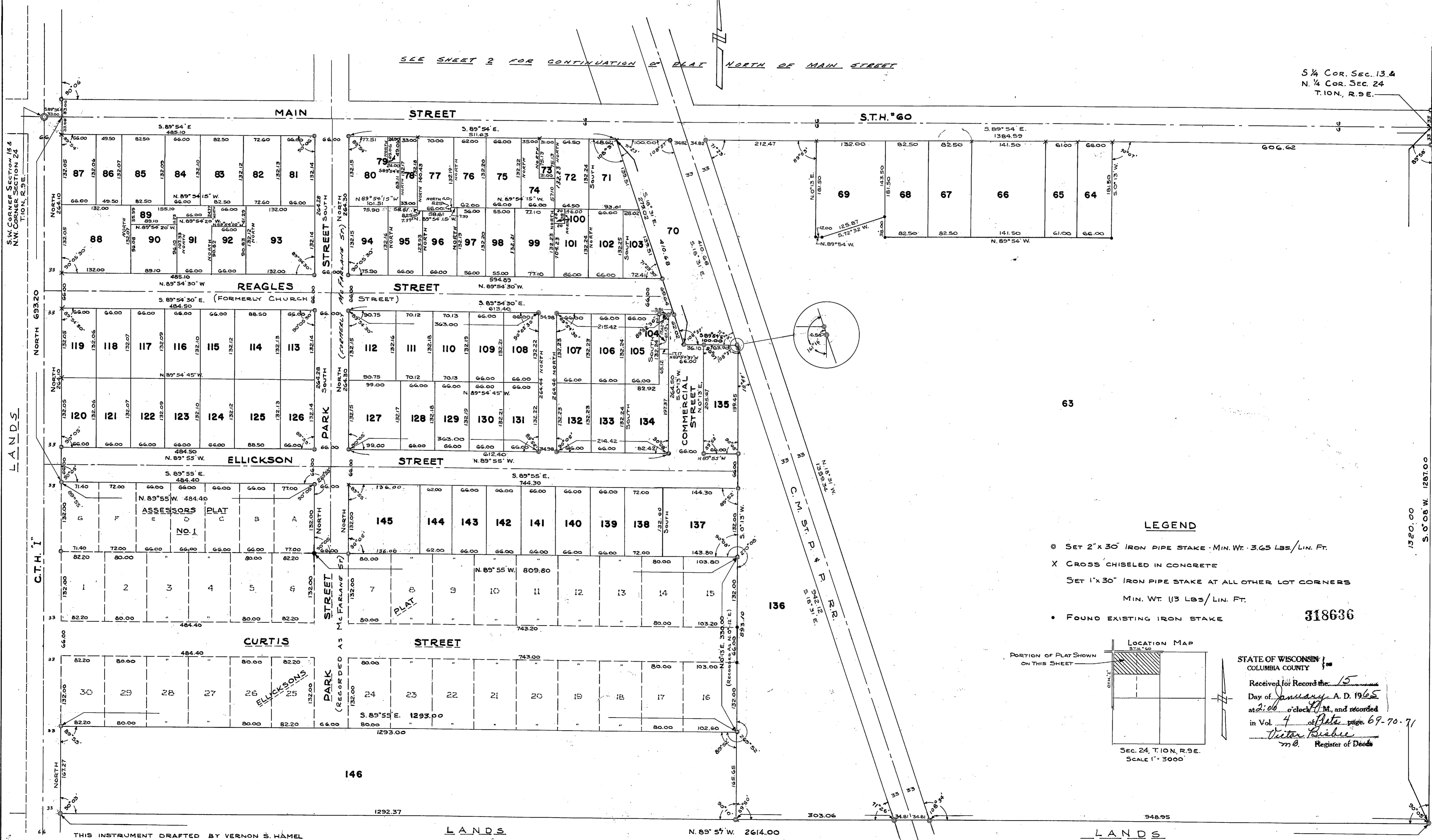
COLUMBIA COUNTY, WISCONSIN



SEPTEMBER, 1964

SEE SHEET 2 FOR CONTINUATION OF PLAT NORTH OF MAIN STREET

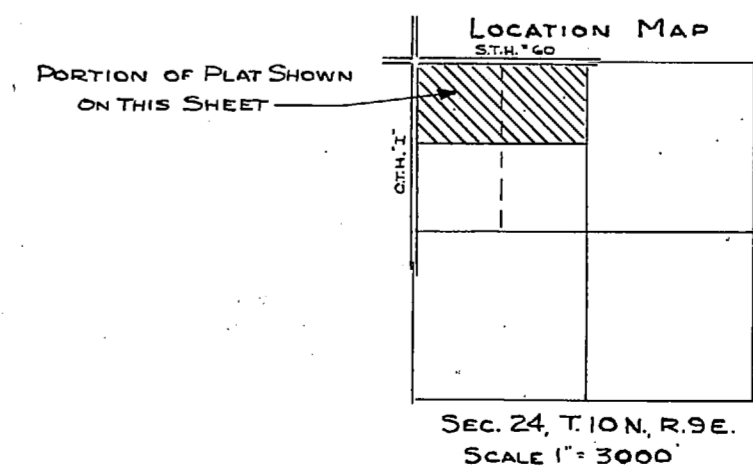
S 1/4 COR. SEC. 13 &
N 1/4 COR. SEC. 24
T. 10N., R. 9E.



LEGEND

- ⊙ SET 2" x 30" IRON PIPE STAKE - MIN. WT. 3.65 LBS./LIN. FT.
- X CROSS CHISELED IN CONCRETE
- SET 1" x 30" IRON PIPE STAKE AT ALL OTHER LOT CORNERS
MIN. WT. 1/3 LBS./LIN. FT.
- FOUND EXISTING IRON STAKE

318636



STATE OF WISCONSIN
COLUMBIA COUNTY

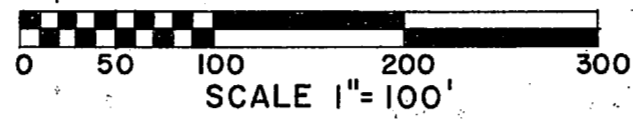
Received for Record on 15
Day of January, A. D. 1965
at 2:00 o'clock P.M., and recorded
in Vol. 4 of Data page 69-70-71
Victor Fisher
m. Register of Deeds

THIS INSTRUMENT DRAFTED BY VERNON S. HAMEL

ASSESSOR'S PLAT NO. 2 VILLAGE OF ARLINGTON

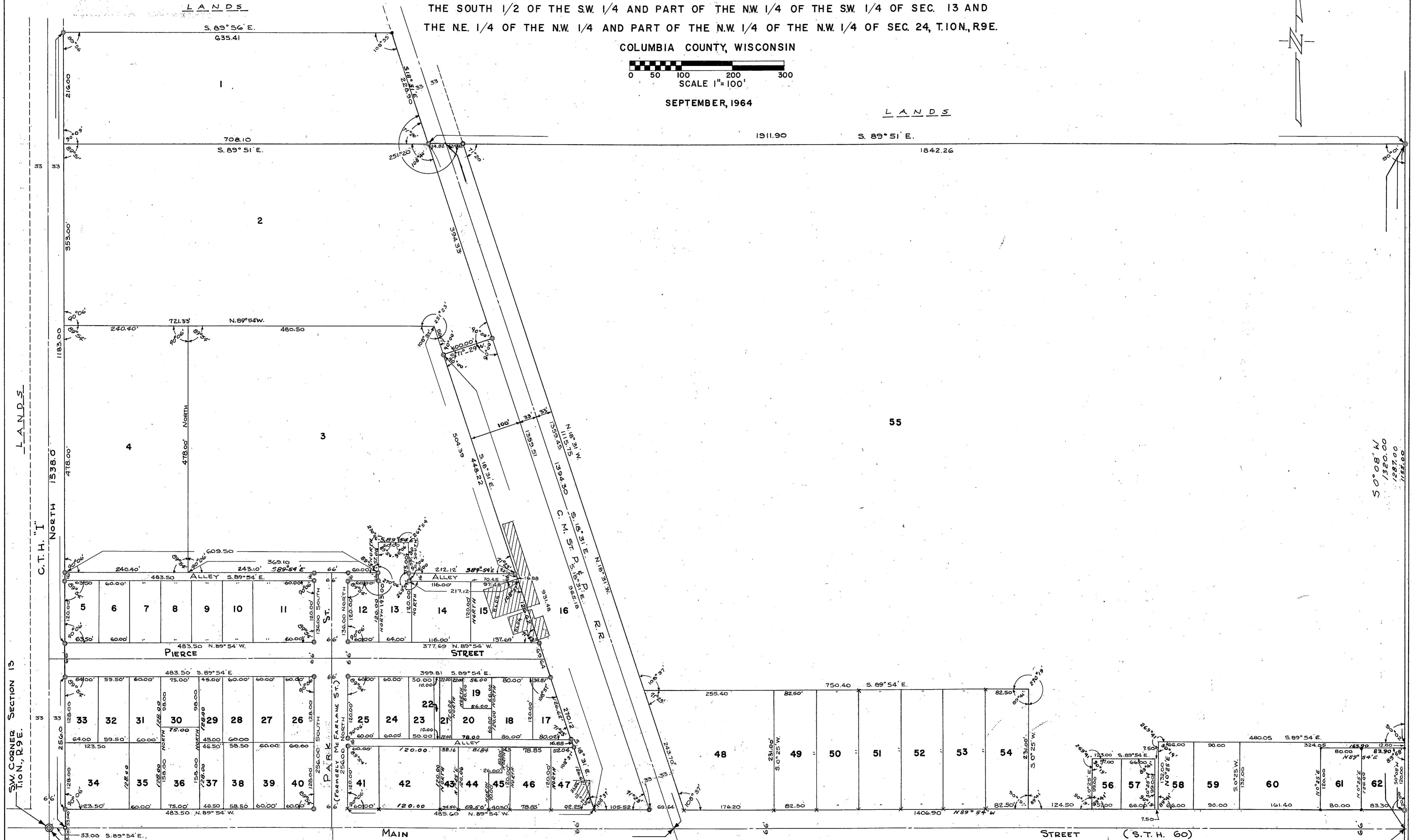
THE SOUTH 1/4 OF THE SW. 1/4 AND PART OF THE NW. 1/4 OF THE SW. 1/4 OF SEC. 13 AND
THE NE. 1/4 OF THE NW. 1/4 AND PART OF THE NW. 1/4 OF THE NW. 1/4 OF SEC. 24, T.10N., R.9E.

COLUMBIA COUNTY, WISCONSIN



SEPTEMBER, 1964

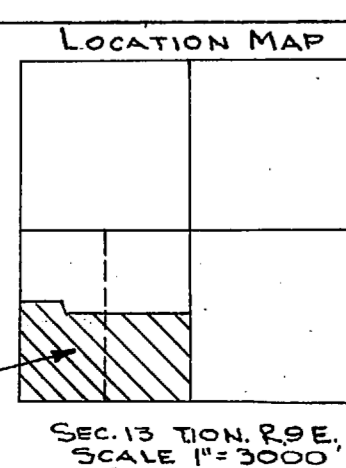
LANDS



LANDS

SECTION 13
SW CORNER
T.10N., R.9E.

THIS INSTRUMENT DRAFTED
BY VERNON S. HAMEL



SEE SHEET 1 FOR CONTINUATION OF PLAT SOUTH OF MAIN ST

LEGEND

- SET 2" x 30" IRON PIPE STAKE MIN. WT. 3.65 LBS/LIN. FT.
- X CHISELED CROSS IN CONCRETE
- SET 1" x 30" IRON PIPE STAKES AT ALL OTHER LOT CORNERS
MIN. WT. 1.13 LBS/LIN. FT.
- FOUND EXISTING IRON STAKE

3/4 COR. SECTION 13
T.10N., R.9E.

50' 08" W
1320.00
1287.00
1155.00

ASSESSOR'S PLAT NO. 2 VILLAGE OF ARLINGTON

THE SOUTH 1/2 OF THE S.W. 1/4 AND PART OF THE N.W. 1/4 OF THE SW. 1/4 OF SECTION 13, AND
THE N.E. 1/4 OF THE N.W. 1/4 AND PART OF THE N.W. 1/4 OF THE NW. 1/4 OF SEC. 24, T.10N., R.9E.

COLUMBIA COUNTY, WISCONSIN

SEPTEMBER, 1964

LOT NO.	DESCRIPTION REFERENCE
1	V. 290 DEEDS, P. 513, Doc. No. 310262
2	V. 290 DEEDS, P. 513, Doc. No. 310262
3	V. 232 DEEDS, P. 164 & 165, Doc. No. 265437 Exc. V. 32 Misc. R. 443, Doc. No. 280184 (LEASE)
4	V. 248 DEEDS, P. 141, Doc. No. 277594
5	V. 250 DEEDS, P. 528, Doc. No. 279665
6	V. 164 DEEDS, P. 124, Doc. No. 185458 Exc. V. 250 DEEDS, P. 528, Doc. No. 279665
7	V. 275 DEEDS, P. 548, Doc. No. 298571
8	V. 229 DEEDS, P. 346, Doc. No. 263546
9	V. 258 DEEDS, P. 206, Doc. No. 285427
10	V. 201 DEEDS, P. 631, Doc. No. 238521
11	V. 136 DEEDS, P. 132, Doc. No. 158628 & V. 121 DEEDS, P. 506, Doc. No. 161391
12	V. 192 DEEDS, P. 140, Doc. No. 227059
13	V. 247 DEEDS, P. 208, Doc. No. 276917 & V. 248 DEEDS, P. 170, Doc. No. 277643 Also V. 32 Misc. R. 443, Doc. No. 280184 (LEASE)
14	V. 27 Misc., P. 27, Doc. No. 263618, EXCEPT V. 248 DEEDS, P. 170, Doc. No. 277643
15	V. 224 DEEDS, P. 600, Doc. No. 260131
16	COLUMBIA CO. CIRCUIT COURT RECORDS VOLUME 5 P. 318, CASE # 3728
17	V. 291 DEEDS, P. 363, Doc. No. 310961
18	V. 226 DEEDS, P. 199, Doc. No. 261124
19	EASTERLY 16 FEET OF NORTH 60 FEET OF LOT 12, BLOCK 2, AND WESTERLY 40 FEET OF NORTH 60 FEET OF LOT 11, BLOCK 2, ORIGINAL PLAT, VILLAGE OF ARLINGTON
20	V. 295 DEEDS, P. 385, Doc. No. 311547 & V. 222 DEEDS, P. 396, Doc. No. 258394
21	V. 250 DEEDS, P. 163, Doc. No. 279186 Exc. V. 295 DEEDS, P. 385, Doc. No. 314072
22	V. 179 DEEDS, P. 320, Doc. No. 212551 (EAST 10 FEET OF LOT 13, BLOCK 2 OF ORIGINAL VILLAGE PLAT)
23	V. 157 DEEDS, P. 342, Doc. No. 180148
24	V. 214 DEEDS, P. 369, Doc. No. 252455 (LOT 14, BLOCK 2, OF ORIG. VILLAGE PLAT)
25	V. 272 DEEDS, P. 88, Doc. No. 295710 Exc. V. 283 DEEDS, P. 401, Doc. No. 304628
26	V. 258 DEEDS, P. 184, Doc. No. 285381
27	V. 251 DEEDS, P. 593, Doc. No. 280637
28	V. 254 DEEDS, P. 490, Doc. No. 282644 (PARCEL *2)
29	V. 249 DEEDS, P. 551, Doc. No. 278851
30	V. 239 DEEDS, P. 522, Doc. No. 271228
31	V. 232 DEEDS, P. 613, Doc. No. 265997
32	V. 245 DEEDS, P. 51, Doc. No. 275234
33	V. 239 DEEDS, P. 439, Doc. No. 271114 Exc. V. 245 DEEDS, P. 51, Doc. No. 275234
34	V. 239 DEEDS, P. 441, Doc. No. 271115
35	V. 273 DEEDS, P. 82, Doc. No. 296429
36	V. 264 DEEDS, P. 6, Doc. No. 289557
37	V. 249 DEEDS, P. 551, Doc. No. 278851 & V. 247 DEEDS, P. 249, Doc. No. 276963
38	V. 254 DEEDS, P. 490, Doc. No. 282644 (PARCEL *1)
39	V. 251 DEEDS, P. 593, Doc. No. 280637
40	V. 269 DEEDS, P. 479, Doc. No. 293876
41	V. 283 DEEDS, P. 401, Doc. No. 304628
42	V. 179 DEEDS, P. 320, Doc. No. 212551 & V. 214 DEEDS, P. 369, Doc. No. 252455 (LOTS 243, BLK. 2 OF ORIG. VILLAGE PLAT)
43	V. 247 DEEDS, P. 133, Doc. No. 276836

LOT NO.	DESCRIPTION REFERENCE
44	V. 222 DEEDS, P. 396, Doc. No. 258394 (LANDS IN LOTS 445, BLK. 2, ORIG. VILLAGE PLAT)
45	V. 128 DEEDS, P. 256, Doc. No. 143713 & V. 255 DEEDS, P. 494, Doc. No. 283410
46	V. 195 DEEDS, P. 549, Doc. No. 234458 Exc. V. 255 DEEDS, P. 494, Doc. No. 283410
47	V. 291 DEEDS, P. 363, Doc. No. 310961
48	V. 284 DEEDS, P. 283, Doc. No. 305206
49	V. 251 DEEDS, P. 1, Doc. No. 279807
50	V. 203 DEEDS, P. 79, Doc. No. 242027
51	V. 149 DEEDS, P. 517, Doc. No. 182229
52	V. 258 DEEDS, P. 579, Doc. No. 285862
53	V. 161 DEEDS, P. 103, Doc. No. 192574
54	V. 281 DEEDS, P. 645, Doc. No. 303384
55	V. 164 DEEDS, P. 166, Doc. No. 185710 Exc. V. 290 DEEDS, P. 517, Doc. No. 310278 V. 228 DEEDS, P. 145, Doc. No. 262567 V. 239 DEEDS, P. 453, Doc. No. 271132 V. 239 DEEDS, P. 559, Doc. No. 271228 S. 1/2 OF THE S.E. 1/4 OF SEC. 13, T.10N., R.9E.
56	V. 228 DEEDS, P. 145, Doc. No. 262567
57	V. 290 DEEDS, P. 517, Doc. No. 310278
58	V. 239 DEEDS, P. 559, Doc. No. 271228
59	COMMENCING AT THE INTERSECTION OF THE CENTRAL LINE OF MAIN STREET AND THE EAST ERLY LINE OF THE R.O.W. OF THE C.M. & ST. P. RAILWAY, THENCE EAST 983.2 FEET ALONG SAID CENTERLINE TO POINT, THENCE NORTH 33 FEET TO IRON STAKE IN NORTH LINE OF HIGHWAY AND POINT OF BEGINNING, THENCE FROM SAID POINT OF BEGINNING 132 FEET NORTH TO IRON STAKE, THENCE EAST 90 FEET, THENCE SOUTH 132 FEET TO R.O.W. OF HIGHWAY 60, ALSO KNOWN AS MAIN STREET, THENCE WESTERLY ALONG NORTH- ERLY LINE OF MAIN STREET TO THE POINT OF BEGINNING
60	V. 239 DEEDS, P. 453, Doc. No. 271132 Exc. ABOVE DESCRIBED LOT 59 OF THIS ASSESSOR'S PLAT, AND EXCEPT V. 279 DEEDS, P. 377, Doc. No. 301415
61 & 62	V. 279 DEEDS, P. 377, Doc. No. 301415
63	NORTH 1/2 OF LAND DESCRIBED IN V. 181 DEEDS, P. 5, Doc. No. 211288 - PARCEL 3, AND ALSO LANDS DESCRIBED IN V. 224 DEEDS, P. 320, Doc. No. 259828, V. 224 DEEDS, P. 256, Doc. No. 259746, AND V. 207 DEEDS, P. 446, Doc. No. 246062, EXCEPTING LANDS IN THE NORTH 1/2 OF LAND DESCRIBED IN V. 181 DEEDS, P. 5, Doc. No. 211288 - PARCEL 3 WHICH LIE WEST OF RAILROAD RIGHT-OF-WAY
64	V. 285 DEEDS, P. 628, Doc. No. 306543
65	V. 184 DEEDS, P. 224, Doc. No. 218008
66	V. 234 DEEDS, P. 397, Doc. No. 267273
67	V. 221 DEEDS, P. 259, Doc. No. 257465
68	V. 288 DEEDS, P. 246, Doc. No. 308405
69	V. 179 DEEDS, P. 283, Doc. No. 212180 Exc. V. 207 DEEDS, P. 446, Doc. No. 246062 V. 224 DEEDS, P. 320, Doc. No. 259828 V. 224 DEEDS, P. 256, Doc. No. 259746
70	V. 60 DEEDS, P. 238, Doc. No. (None)
71	V. 286 DEEDS, P. 182, Doc. No. 306806
72	V. 238 DEEDS, P. 337, Doc. No. 279233
73	V. 231 DEEDS, P. 559, Doc. No. 265112 (LAND RETAINED BY GRANTOR) (SUBJECT TO R.O.W. IN V. 117 DEEDS, P. 281, Doc. No. 134668)
74	V. 231 DEEDS, P. 559, Doc. No. 265112 (SUBJECT TO R.O.W. IN V. 117 DEEDS, P. 281, Doc. No. 134668)
75	V. 217 DEEDS, P. 224, Doc. No. 254310
76	V. 292 DEEDS, P. 459, Doc. No. 311889
77	V. 294 DEEDS, P. 469, Doc. No. 313459 (PARCELS *1 & 2)

LOT NO.	DESCRIPTION REFERENCE
78	V. 228 DEEDS, P. 482, Doc. No. 262966 (PARCEL *4)
79	V. 295 DEEDS, P. 426, Doc. No. 314203
80	V. 228 DEEDS, P. 481, Doc. No. 262966 - PARCEL *1, AND V. 125 DEEDS, P. 644, Doc. No. 142809, Exc. V. 295 DEEDS, P. 426, Doc. No. 314203
81	V. 207 DEEDS, P. 344, Doc. No. 245516
82	V. 187 DEEDS, P. 557, Doc. No. 225441
83	V. 204 DEEDS, P. 629, Doc. No. 248527
84	V. 227 DEEDS, P. 605, Doc. No. 262324 (PARCEL *2)
85	V. 223 DEEDS, P. 417, Doc. No. 259198
86	V. 235 DEEDS, P. 167, Doc. No. 267755
87	V. 197 DEEDS, P. 434, Doc. No. 237002
88	V. 129 DEEDS, P. 177, Doc. No. 146006
89	V. 227 DEEDS, P. 605, Doc. No. 262324 - PARCEL *1, Exc. V. 255 DEEDS, P. 355, Doc. No. 283260, ALSO Exc. V. 202 DEEDS, P. 603, Doc. No. 241448, AND Exc. V. 244 DEEDS, P. 493, Doc. No. 274919
90	V. 244 DEEDS, P. 493, Doc. No. 274919
91	V. 202 DEEDS, P. 603, Doc. No. 241448
92	V. 255 DEEDS, P. 355, Doc. No. 283260
93	V. 164 DEEDS, P. 161, Doc. No. 185685 & V. 157 DEEDS, P. 127, Doc. No. 178927
94	V. 187 DEEDS, P. 425, Doc. No. 224454
95	V. 4 RECORDS, P. 381, Doc. No. 315201
96	V. 278 DEEDS, P. 640, Doc. No. 300931
97	EXCEPTION DESCRIBED IN V. 213 DEEDS, P. 361, Doc. No. 251776
98	V. 201 DEEDS, P. 12, Doc. No. 235172
99	V. 213 DEEDS, P. 361, Doc. No. 251776, Exc. PROPERTY TO WM F. NOLTEMEYER, DE- SCRIBED IN DEED AND EXCEPT V. 201 DEEDS, P. 12, Doc. No. 235172
100	20' x 28' FOR FIRE HOUSE REFERRED TO AS AN EXCEPTION IN V. 219 DEEDS, P. 70, Doc. No. 255625 AND V. 203 DEEDS, P. 256, Doc. No. 242838
101	V. 203 DEEDS, P. 256, Doc. No. 242838, Exc. V. 283 DEEDS, P. 405, Doc. No. 304632
102	V. 283 DEEDS, P. 405, Doc. No. 304632
103	V. 219 DEEDS, P. 70, Doc. No. 255625, Exc. V. 203 DEEDS, P. 256, Doc. No. 242838
104	V. 281 DEEDS, P. 32, Doc. No. 302607 (PARCEL *2)
105	V. 235 DEEDS, P. 35, Doc. No. 267606
106	V. 192 DEEDS, P. 387, Doc. No. 228830
107	V. 258 DEEDS, P. 477, Doc. No. 285753
108	V. 195 DEEDS, P. 433, Doc. No. 233531
109	V. 223 DEEDS, P. 303, Doc. No. 259022
110	V. 243 DEEDS, P. 445, Doc. No. 274123
111	V. 246 DEEDS, P. 340, Doc. No. 276375
112	V. 251 DEEDS, P. 127, Doc. No. 279978
113	V. 204 DEEDS, P. 142, Doc. No. 241983 Exc. V. 209 DEEDS, P. 12, Doc. No. 247035
114	V. 157 DEEDS, P. 604, Doc. No. 181325
115	V. 172 DEEDS, P. 109, Doc. No. 195663
116	V. 293 DEEDS, P. 351, Doc. No. 312591
117	V. 274 DEEDS, P. 26, Doc. No. 297068
118	V. 266 DEEDS, P. 48, Doc. No. 291158
119	V. 282 DEEDS, P. 531, Doc. No. 304041
120	V. 245 DEEDS, P. 177, Doc. No. 275424

LOT NO.	DESCRIPTION REFERENCE
121	V. 281 DEEDS, P. 38, Doc. No. 302626
122	V. 216 DEEDS, P. 296, Doc. No. 253644
123	V. 209 DEEDS, P. 638, Doc. No. 249782
124	V. 244 DEEDS, P. 598, Doc. No. 275101
125	V. 219 DEEDS, P. 221, Doc. No. 255811
126	V. 209 DEEDS, P. 12, Doc. No. 247035
127	V. 197 DEEDS, P. 238, Doc. No. 234453
128	V. 208 DEEDS, P. 146, Doc. No. 311545
129	V. 283 DEEDS, P. 521, Doc. No. 304764
130	V. 294 DEEDS, P. 159, Doc. No. 313064
131	V. 195 DEEDS, P. 618, Doc. No. 234854
132	V. 252 DEEDS, P. 17, Doc. No. 280733
133	V. 281 DEEDS, P. 32, Doc. No. 302607 (PARCEL *1)
134	V. 256 DEEDS, P. 613, Doc. No. 284290
135	V. 202 DEEDS, P. 598, Doc. No. 241429
136	THAT PORTION OF THE NORTH 1/2 OF LANDS DESCRIBED IN V. 181 DEEDS, P. 5, Doc. No. 211288 - PARCEL *3 WHICH LIE WEST OF THE RAILROAD RIGHT-OF-WAY
137	V. 264 DEEDS, P. 128, Doc. No. 289701 (FIRST DESCRIPTION)
138	V. 259 DEEDS, P. 328, Doc. No. 286336
139	V. 251 DEEDS, P. 351, Doc. No. 280350
140	V. 247 DEEDS, P. 433, Doc. No. 271187 Exc. V. 288 DEEDS, P. 557, Doc. No. 308723
141	V. 288 DEEDS, P. 557, Doc. No. 308723
142	V. 226 DEEDS, P. 266, Doc. No. 261196
143	V. 252 DEEDS, P. 348, Doc. No. 281065 Exc. V. 258 DEEDS, P. 466, Doc. No. 285741
144	V. 258 DEEDS, P. 466, Doc. No. 285741
145	V. 228 DEEDS, P. 500, Doc. No. 262985 - (FIRST DESCRIPTION), ALSO V. 252 DEEDS, P. 374, Doc. No. 281106
146	THAT PORTION OF THE SOUTH 1/2 OF THE N.W. 1/4 OF THE N.W. 1/4 OF SECTION 24, T.10N., R.9E., LYING SOUTH OF ELLICK- SON'S PLAT REFERENCE: V. 125 DEEDS, P. 122, Doc. No. 140765

NOTE: THE ORIGINAL VILLAGE PLAT REFERRED
TO IN DEED DESCRIPTIONS IS RECORDED
IN V. 2 OF Misc. RECORDS, P. 476

STATE OF WISCONSIN }
COUNTY OF COLUMBIA } S.S.

I, VERNON S. HAMEL, REGISTERED LAND SURVEYOR, DO HEREBY CERTIFY THAT BY THE ORDER OF THE VILLAGE BOARD OF ARLINGTON, WISCONSIN, MADE ON THE 29TH DAY OF AUGUST, 1960, I HAVE SURVEYED, MAPPED, DIVIDED, AND PLATTED THE SOUTH 1/2 OF THE S.W. 1/4 AND PART OF THE N.W. 1/4 OF THE SW. 1/4 OF SECTION 13, AND THE N.E. 1/4 OF THE N.W. 1/4 AND PART OF THE N.W. 1/4 OF THE N.W. 1/4 OF SECTION 24, T. 10 N., R. 9 E., VILLAGE OF ARLINGTON, COLUMBIA COUNTY, WISCONSIN, DESCRIBED AS FOLLOWS:

COMMENCING AT THE S.W. CORNER OF SECTION 13, T. 10 N., R. 9 E., VILLAGE OF ARLINGTON, COLUMBIA COUNTY, WISCONSIN; THENCE S. 89° 54' E., 33.00 FEET TO THE POINT OF BEGINNING OF THIS DESCRIPTION; THENCE NORTH 1538.00 FEET; THENCE S. 89° 56' E., 635.41 FEET; THENCE S. 18° 31' E., 228.90 FEET; THENCE S. 89° 56' E., 635.41 FEET; THENCE S. 18° 31' E., 228.90 FEET; THENCE S. 89° 51' E., 1911.90 FEET; THENCE S. 0° 08' W., 1320.00 FEET TO SOUTH 1/4 CORNER OF SECTION 13, T. 10 N., R. 9 E., THENCE CONTINUING S. 0° 08' W., 1320.00 FEET; THENCE N. 89° 57' W., 2614.00 FEET; THENCE NORTH 167.27 FEET; THENCE S. 89° 51' E., 1293.00 FEET; THENCE N. 0° 13' E., 330.00 FEET; THENCE N. 89° 55' W., 809.80 FEET; THENCE NORTH 132.00 FEET; THENCE N. 89° 55' W., 484.40 FEET; THENCE NORTH 693.20 FEET TO THE POINT OF BEGINNING.

I CERTIFY THAT THIS ASSESSOR'S PLAT IS A CORRECT REPRESENTATION OF ALL THE EXTERIOR BOUNDARIES OF LANDS SURVEYED AND EACH PARCEL THEREOF AND THAT I HAVE FULLY COMPLIED WITH THE PROVISIONS OF SECTION 70.27 OF THE WISCONSIN STATUTES IN FILING THE SAME.

WITNESSES:
Harold O. Vik
HAROLD O. VIK
Donald L. Sonneson
DONALD L. SONNESON

Vernon S. Hamel
VERNON S. HAMEL, REGISTERED
WISCONSIN LAND SURVEYOR, N.



STATE OF WISCONSIN }
COUNTY OF COLUMBIA } S.S.

RESOLVED, THAT A PLAT KNOWN AS ASSESSOR'S PLAT NO. 2, OF ARLINGTON, WHICH HAS BEEN DULY FILED FOR APPROVAL OF THE VILLAGE BOARD OF THE VILLAGE OF ARLINGTON, COLUMBIA COUNTY, WISCONSIN, BE AND IS HEREBY APPROVED.

I CERTIFY THAT THE ABOVE IS A TRUE AND CORRECT COPY OF A RESOLUTION ADOPTED BY THE VILLAGE BOARD ON THE 4TH DAY OF NOVEMBER, 1964

Eleanor Gessner
ELEANOR GESSNER, VILLAGE CLERK

STATE OF WISCONSIN }
COUNTY OF COLUMBIA } S.S.

I HEREBY CERTIFY THAT ALL THE PROVISIONS OF SECTION 70.27 OF THE WISCONSIN STATUTES HAVE BEEN COMPLIED WITH IN THE PREPARATION AND FILING OF ASSESSOR'S PLAT NO. 2 OF THE VILLAGE OF ARLINGTON.

Eleanor Gessner
ELEANOR GESSNER, VILLAGE CLERK

SUBSCRIBED AND SWORN TO BEFORE ME
THIS 5TH DAY OF NOVEMBER 1964

H. F. Noltemeyer
NOTARY PUBLIC
COLUMBIA COUNTY, WISCONSIN
MY COMMISSION EXPIRES APRIL 30, 1968