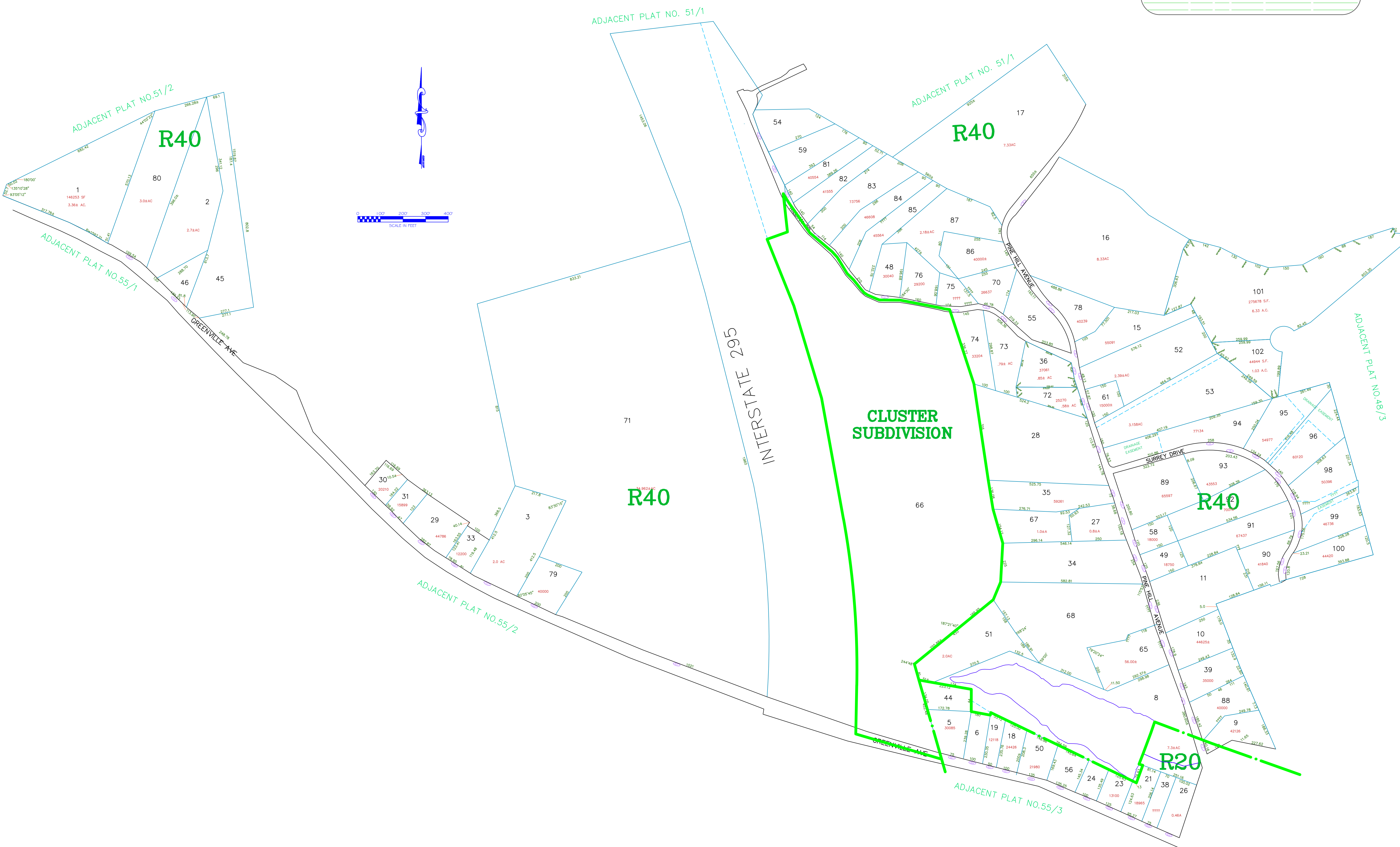


ASSESSOR'S MAP

SHOWING ZONING DISTRICTS

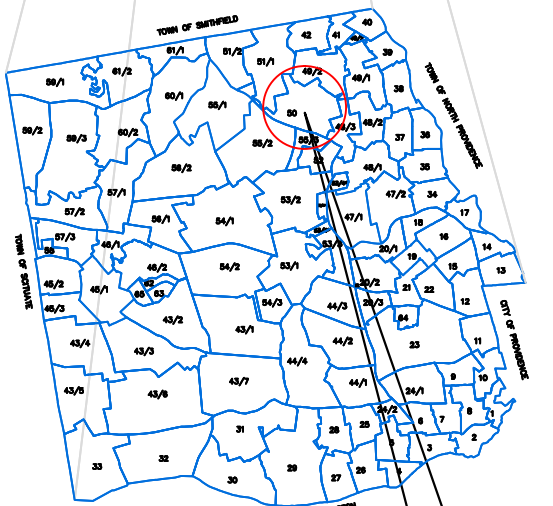
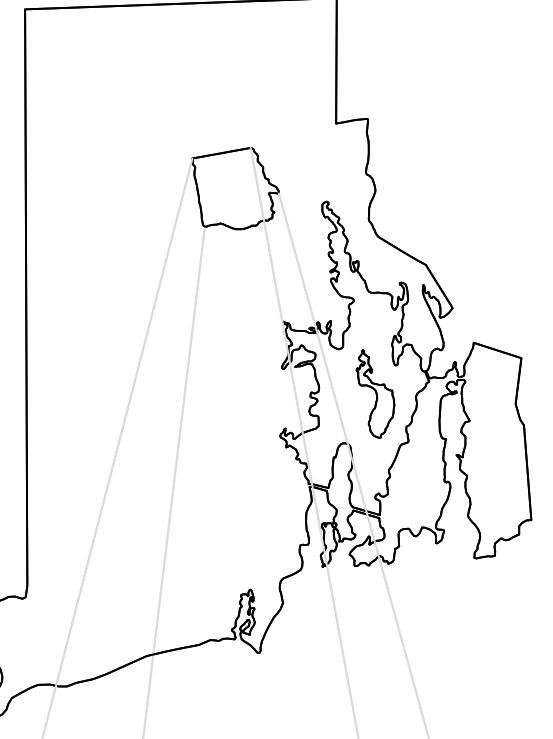
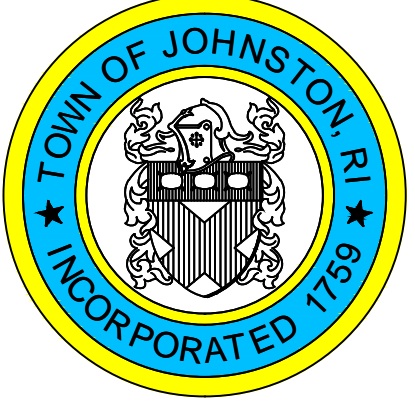
AMENDMENTS					
LOT(S)	FROM	TO	ORDIN. #	DATE	NOTE
66	R40	CS	2008-12	7/22/08	-



Assessor's Plat Number

50

STATE OF RHODE ISLAND
 TOWN OF JOHNSTON
 PROVIDENCE COUNTY
 INCORPORATED 1759
 ASSESSOR'S OFFICE
 1385 HARTFORD AVENUE
 JOHNSTON, RHODE ISLAND
 02919



PLAT INDEX
AREA

Scale: 1:200
 Revised By: Benjamin Ng
 Last updated: January 05, 2015
 Date printed: January 04, 2016

For copies of plat maps, please go to the DPW at 100 Irons Avenue Johnston Rhode Island. Thank you.

NOTE: This map was prepared for the use of the Town of Johnston for assessment and illustrative purposes only. It does not represent a survey of the premises. No liability is assumed as to the sufficiency or accuracy of the data delineated hereon.