



MAPLE GROVE HISTORICAL PRESERVATION SOCIETY
12800 Arbor Lakes Parkway, Maple Grove, MN 55311



MAPLE GROVE HISTORY MUSEUM
9030 Forestview Lane N, Door J, Maple Grove MN 55369

<https://www.maplegrovehistory.org/>

Purpose: To collect and preserve information and artifacts and to educate the community about the history of Maple Grove, MN.

MAPLE GROVE DAYS BITS AND PIECES OF HISTORY VOLUME 116 AUGUST 2024

Our city-wide festivity, Maple Grove Days, took place from July 10th – July 14th. On Sunday, July 14th, the Maple Grove Historical Preservation Society (MGHPS) staged our annual Open House from 1 to 4 pm. The History Society is a proud and eager participant in this celebration. Our meetings, discussion and planning for the event began in April and by June, we have a well-defined theme featuring exhibits and displays. This year our theme was “Bits and Pieces of History.” Members took the theme and “ran with it!”

In the Museum’s adjoining garage bay, exhibits featured Maple Grove maps, yearbooks, a 1940s kitchen display, Maple Grove town hall display, a ‘What is it?’ table, historic wood restoration and an Osseo table. Also in the garage bay: a Model T antique car, a one-horse sleigh and two-seat buggy.

The Maple Grove Community Organization (MGCO) supplied History members with tee shirts for the celebration. This year, the tee shirts were lime green with white lettering proclaiming “Maple Grove Days 2024” and “Volunteer.” Open House volunteers were easy to spot.

John Garritsen, a commissioner from the Citizens for Long Range Planning advocated for a city-wide community organization. The first parade was held summer of 1990 at Bass Lake Center and the Osseo Senior High School band presided. The band marched through the streets around Bass Lake Center. McDonald’s was the torch run sponsor and the first city-wide Maple Grove celebration was history. The following year, a Kiddie Parade was added.



August Potluck August 15th
6 00 PM
Bring a dish to share and
your family or friends!

Maple Grove Days



Ogden Nash called this the “in-between” generation — those who grew up while the horse and buggy was giving way to the automobile, and trusting neither.”



Maple Grove Swat Team Member



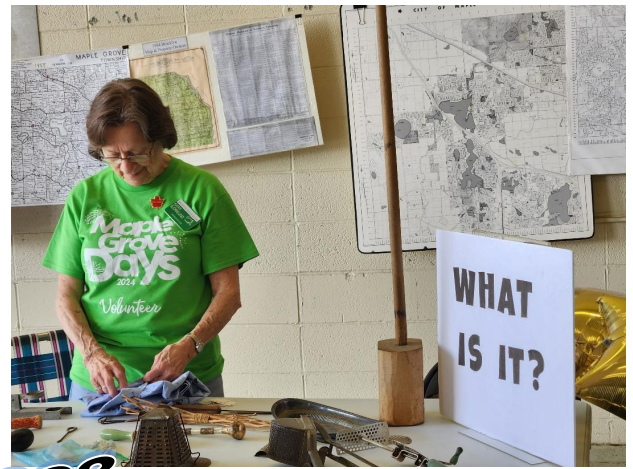
Mark Johnston of Historic Design Consulting helps the young use hand tools for woodworking. He is a member of the Minnesota Society of Architectural Historians and the Association of Preservation Technology. Mark does much of his restoration work using authentic, 19th century hand tools.

Osseo Historical Society table!

"This is Paradise," Pierre Bottineau exclaimed, as he and his traveling companions, Joseph Potvin, Peter Raiche, and Peter Gervais, stepped forth from the deep woods and scanned the beautiful prairie. They determined to make this "spot" a settlement. This all happened in July 1852. Claims were made on "Bottineau Prairie." Originally Osseo was under the government of townships of Brooklyn Park and Maple Grove. In the Spring of 1875, by an act of the state legislature, Osseo was incorporated." The 150th celebration of the founding of Osseo will take place in 2025.

Info was gleaned from the Osseo website





What is it???

Curiosity kills the cat, but not in our new display at our Open House on July 14th. Twenty plus items from the museum's inventory were laid out for the visitors to guess "What is it"? Items such as a wireless toaster, a Civil War bullet mold, and a kraut stomper had the perseverance of folks who made many interesting guesses. Or, often it was "my grandmother had one of those" or "I remember that" and more often "What is it?"

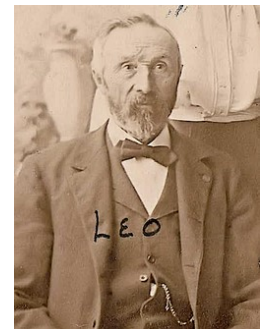
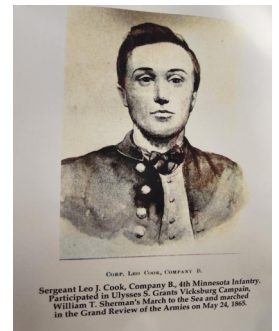
Parents with children enjoyed explaining to their child how something was used; which often had the child wide-eyed with the explanation. The museum volunteers gave the guessers additional information about the puzzling objects.

Diane Herbst and Kathy Bjorklund



Cook Brothers at Open House

Do you see a family resemblance between brothers, Harlan (Coon Rapids), Neil (Cold Spring) or Lynn Cook? Two pictures on the right side show great grandfather, Leo Cook in military uniform and a later-in-life-photo. Were those prominent family features carried forth from great grandfather, Leo, to great grandsons, Harlan, Neil and Lynn? Leo Cook served in the 4th Minnesota Volunteer Infantry, Company B, during the Civil War. He married Fredericka Pauly in 1866 in Maple Grove Township and they had seven children. Leo Cook is buried in the Brooklyn-Crystal Cemetery.



Then & Now



WHAT IS YOUR PREFERENCE?

A vintage coffee pot put on the stove or a coffee maker. A sweeper that maybe picks up the stuff spilled on the rug or an electric vacuum. Modern curling irons or an old one heated on a wood stove. Making an Angel food cake from scratch or buying a "box cake" at the supermarket.

Don't think too long or now will be then!





Doesn't melt in the summer sun!
Snowman -Makes his home in the pits!

Maple Grove Gravel Mining Area AKA

The Gravel Pits

I grew up in Maple Grove which was the country in 1971. My parents looked at lots and then built our house at Weaver Lake. It was all dirt roads going through gravel pits and past farms. We would exit at Hemlock or Weaver Lake Road and drive on the frontage road of the new I-94. It was so much fun as the road always moved. The road was the high point then it was moved over and became the low point and the old road bed was mined for gravel. That cycle continued through the years. It was curved and then straight and then went around ponds. Even when I went to Osseo Junior and Senior High before graduating in 1987 the school bus would travel from Weaver Lake through the gravel pits picking up kids that still lived there. It was fun and barely recognizable.

The Maple Grove Gravel Mining Area is located in the east central portion of the city. The gravel mining area encompassed over 2100 acres of land lying south of 89th avenue, west of Hennepin County road 18 (now 169), north of interstate 94 and east of Elm Creek Boulevard.

There were six major facilities including crushing plants, washing plants, asphalt plants, block plant, ready mix plant and a maintenance facility. These facilities processed in a range from 100 cubic yards an hour to 500 tons an hour.

Aggregate deposits in a kame formation can reach depths of 150 to 200 feet. Several deposits in Maple Grove are in the range of 100 to 150 feet.

The approximately 1907 acre original site is currently planned to be developed over the next 17 years in response to market demand and is now down to 700 acres being mined.

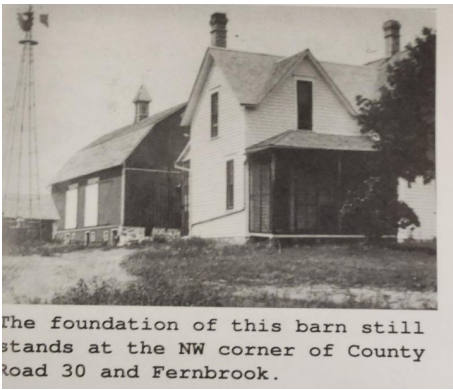




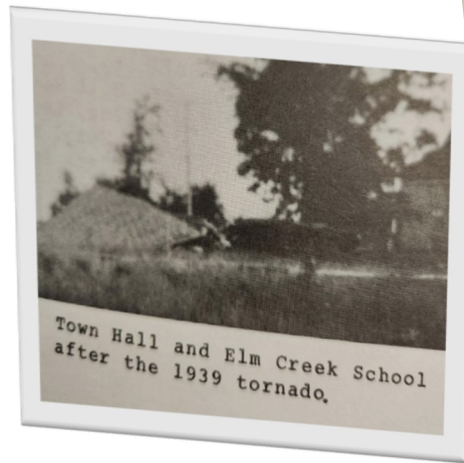
“July 14th at the Maple Grove Days History Museum open house display: “We the People” are the first three words of the Preamble to the U.S Constitution. In 1976 Artist Raymond J Wesley created these metal letters which once proudly adorned the wall in Maple Grove City Hall on Fernbrook Lane. They are a part of the Museum’s collection, along with the town clerk’s meticulously kept meeting minutes from 1858, and the Maple Grove Village Hall sign from 1939-1975.

Maple Grove's township hall dates back to 1863. The first structure, a house, was purchased from settler, Hiram Blowers, and refurbished for use as an official town meeting place. In 1877, the town supervisors sold the structure for \$23 and used the funds to build a new township hall on the same site. The dimensions for the building were 22 feet X 34 feet. A tornado leveled the structure in 1939.

A third town hall on the NW corner of County Rd 30 and Fernbrook was renovated from a house owned by the Hoppenrath family and was used through 1973. During the days of this town hall, the town board, consisting of three members, governed Maple Grove until 1954, when the township was incorporated into a village. It became the village hall and Elmer Weber was the mayor.



The foundation of this barn still stands at the NW corner of County road 30 and Fernbrook.



Town Hall and Elm Creek School after the 1939 tornado.



Village hall after the tornado of 1966.

It was eventually moved and used for community events until a fire in Oct. 2022, caused enough damage, that it was torn down in 2023.



In 1974, Maple Grove was established as a city. That fall, Maple Grove residents voted on and passed a bond issue, authorizing the city government to spend \$367,000 for a new city hall structure. The city hall was constructed on a site just north of the original town hall site on Fernbrook Lane. Richard Reimer was the mayor. Currently, School District 279 uses it as Arbor View Early Childhood Center.



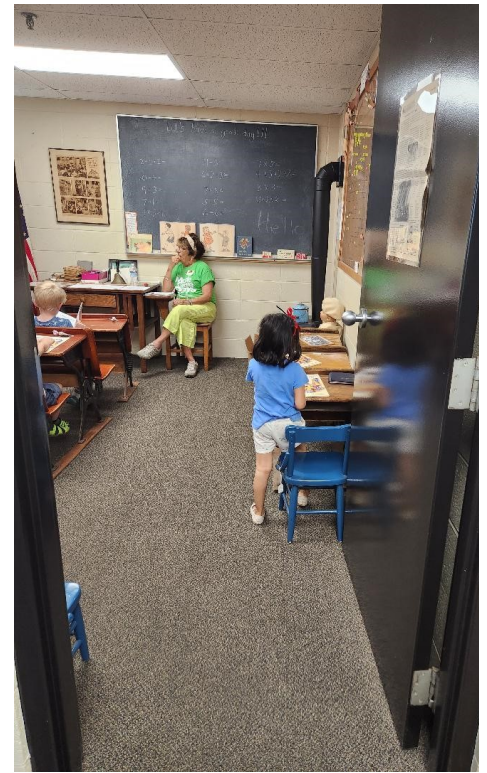
October 2000 Maple Grove's new 150,000 square foot complex was erected at 12800 Arbor Lakes Parkway North. This facility includes a city hall, council chambers, emergency management operations and public safety. Bob Burlingame was our mayor.



population and services had expanded. A complex was erected at 12800 Arbor Lakes Parkway North. This facility includes a city hall, council chambers, emergency management operations and public safety. Bob Burlingame was our mayor.

Country School Room

Country schools served an important role in educating children. Maple Grove School, District 42, was the first school building erected in the township in the late 1850s/early 1860s. The hope was that country schools would be built approximately 2 miles apart, **Children attended country schools in Districts 33, 42, 43, 44, 45, 46, 100, 101, & 123. In the 1952 the rural schools were consolidated.** By 1961, there were 9 school districts in Osseo and the townships of Maple Grove, Brooklyn Park, Brooklyn Center and Corcoran area. In 1961, the state of Minnesota consolidated these school districts into Osseo School District 279. Our country school exhibit features vintage artifacts, pictures and yearbooks abound!







One stormy Wednesday evening this spring, Linda Klapperich captured a rainbow over the Maple Grove History Museum. A promise in the heavens that our History Museum will continue to prosper and build volunteers, programs, and a future.



A beautiful thank you to the angel who planted these flowers recently.

Osseo Historical Society's Committee for the 150th celebration wants to interview anyone who attended the country schools listed in the red outline. Please call Bill Schreiber at 651-260-0817

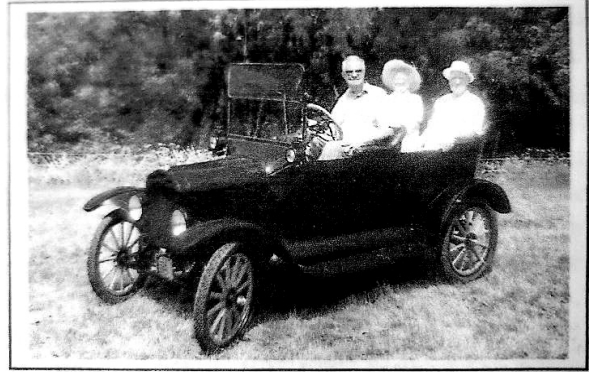
Bill Schreiber
 10001 Zane Ave N
 Brooklyn Park, Mn 55443
 home 763-424-8081
 mobile 651-260-0817
 bsber@icloud.com



Hanging out with antiques

In 1990 when Virginia Hoppenrath walked out the door of the Osseo School District on her retirement day she was greeted by antique cars. Was it a fun joke or a prophecy that she would be hanging around with “vintage” or “antiques” forever. Virginia recalls that almost four years later in January 1994, now 30 years ago– she was one of the founding members of the MGHPs. Larry Phenow suggested publishing a newsletter in Oct 2000. In the Jan 2001 Newsletter No. 2 Jim Deane states “We published a history book in 1976 Maple Grove Memories. . . We need to build on what was published in our booklet” It’s 2024. We have a History Museum! Virginia is a Trustee and she is still. -Recalling the Past– Preserving the Present– Facing the Future!

You may have seen Earl and Virginia riding in Don Kisch’s 1917 Model T Ford in the Pierre Bottineau parade on Thursday, July 14th.



Virginia and Earl Hoppenrath

MAPLE GROVE HISTORICAL PRESERVATION SOCIETY

City of Maple Grove Government Center
12800 Arbor Lakes Parkway, Maple Grove MN 55369-7064

MEMBERSHIP FORM

(renewable each January)

Annual Membership (tax deductible)

- \$15 Individual/Senior
- \$30 Family
- \$100 Supporting Member

I am interested in helping with

- Writing article
- Historic site maintenance
- Displays
- Educational Programs
- Publicity
- Cataloging artifacts
- Calling

NAME _____

ADDRESS _____

TELEPHONE _____

EMAIL _____

November Newsletter “How We Got Around”

Suggestions: Your favorite car, the yellow school bus, walking, running, skiing, snowshoeing, sledding, skating, biking, flying, canoe or boating, train, and street car.

What did you travel on dirt road, muddy paths, bike paths, cow paths, lakes, and rivers– what were the major roads?



MAPLE GROVE HISTORICAL PRESERVATION SOCIETY

OFFICERS

- President: Al Madsen
- Vice President: Pat Ruffing
- Secretary: Karen Brajdich
- Treasurer: Joyce Deane
- Web page designer: Steve Briggs