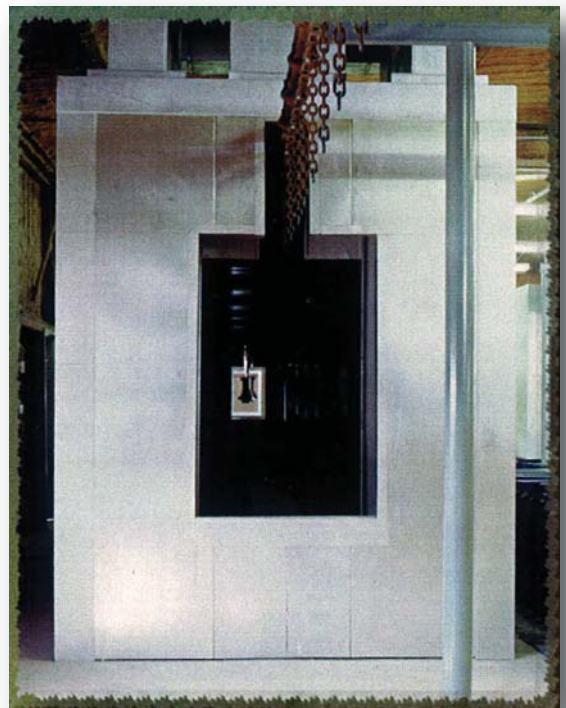


*Power Washers and Convection Ovens
for Liquid or Powder Systems*



Design and Construction Process

Power washer systems and ovens are critical components for any liquid or powder finishing system. At EIC Group we believe the initial design of each piece of process equipment must be engineered to meet your product's finishing specifications. A "one-size-fits-all" mentality does not work.

Our design team starts with the required finishing specifications for your product, production requirements, and area available for the equipment component or system. We look

not only at the process required of each component, but also the construction, material and maintainability. This ensures top quality products from your line, long life of each component and a maintenance-friendly system.

Our company is customer-dedicated and service oriented, and you will find our knowledgeable distributors and service personnel are easily accessible.

The EIC Power Wash System

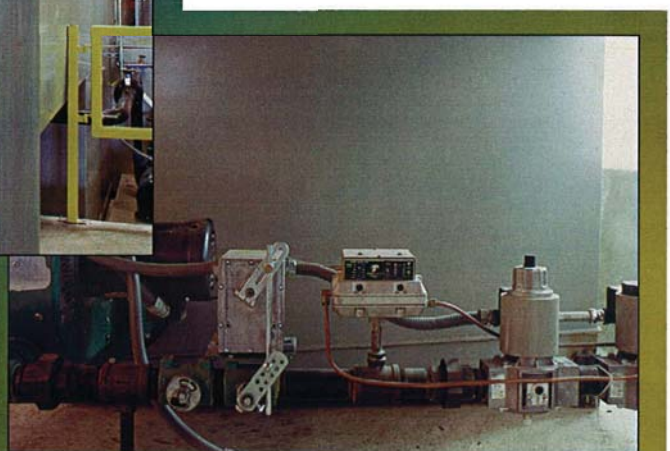
Power wash systems are available from EIC Group from single to multiple stages. Each washer is designed to meet your rigorous product specifications for cleaning, phosphating, conversion coating, rinsing and sealing.

STANDARD CONSTRUCTION

Each of our solution tanks is manufactured from 1/4-inch plate steel. Each heated tank will include a Sch. 40 Fire Tube that delivers a minimum heating efficiency of 70 percent. The upper structure spray zones and drain areas (between each spray zone) are manufactured from 3/16-inch plate steel. This construction offers long life for the tanks and upper structure and cost-efficient operation of each heated zone.

The heart of any power washer is the spraying system. At EIC Group we design each spray zone with easily maintainable CPVC risers and clip-on glass-reinforced polypropylene nozzles. Each spray zone is designed individually, calculating the number of risers and spray nozzles required, and then matching the correctly sized pump, piping and burner to ensure maximum performance. Double stainless steel screens in each zone protect the pump, piping and nozzles from clogging or delivering a distorted spray pattern. Each burner and gas train system is designed to meet the requirement of the heated stage. These heating systems meet the requirements of FM and/or IRI.

Stainless steel solution tanks, are tubes, upper structure and spray piping are also available. Choose any combination of stainless and mild steel construction.



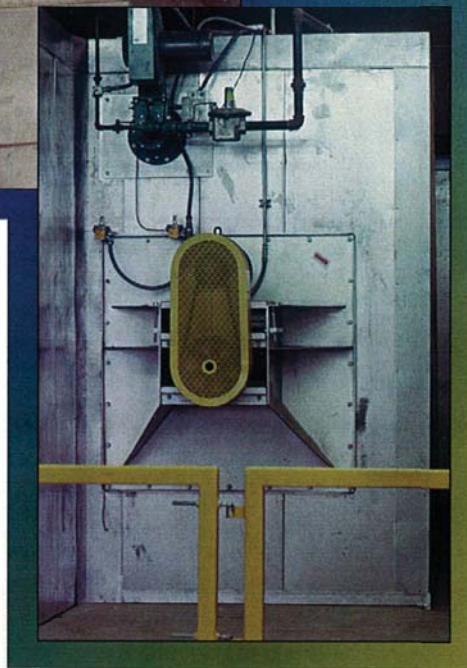
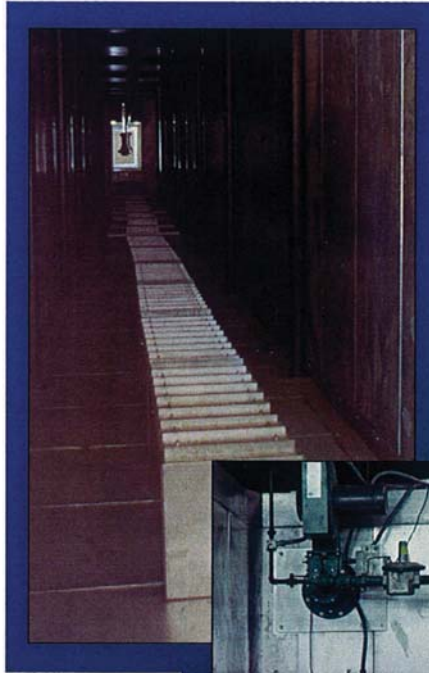
EIC Convention Ovens

To dry parts after the cleaning process and for curing liquid or powder coatings, choose electric or gas-fired convection ovens from EIC Group. We manufacture either individual ovens for each process or a single combination dry-off and cure oven.

STANDARD CONSTRUCTION

All EIC Group convection ovens have aluminized steel-insulated oven panels. The insulated panels are offered in 4- or 6-inch thickness and are filled with high-temperature mineral wood insulation. This panel construction offers excellent insulation of the heating process and long rust-resistant life. All outlet ductwork, flashing and silhouettes are manufactured from aluminized steel.

Ovens from EIC Group maintain even temperatures throughout the oven chamber. The recirculation system is designed to deliver five air changes per minute. Air is recirculated within the oven; air is discharged through a series of adjustable slots in the top of the outlet ductwork located on the floor of the oven. Return air is drawn back into the combustion housing through an opening in the top of the oven burner box. This allows the air to disperse

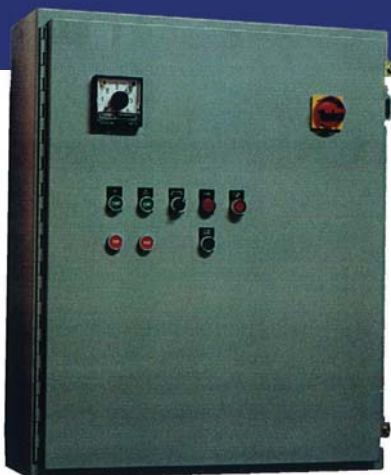


along the oven floor and slowly work its way through the parts and back to the combustion chamber for reheat and recirculation.

For greater operation efficiency, each EIC Group convection oven includes recirculating air seals at each work opening. These air seals help keep ambient outside air from the oven interior and heated air from escaping through the oven work opening.

Burner and gas train components are designed for quick heat-up and modulating in operation for cost efficiency. Each burner and gas train meets FM and/or IRI requirements. All flame safety units are designed to deliver operator signals that make maintenance and troubleshooting quick and simple. This translates to state-of-the-art function and safety.

Electrical Control Panels



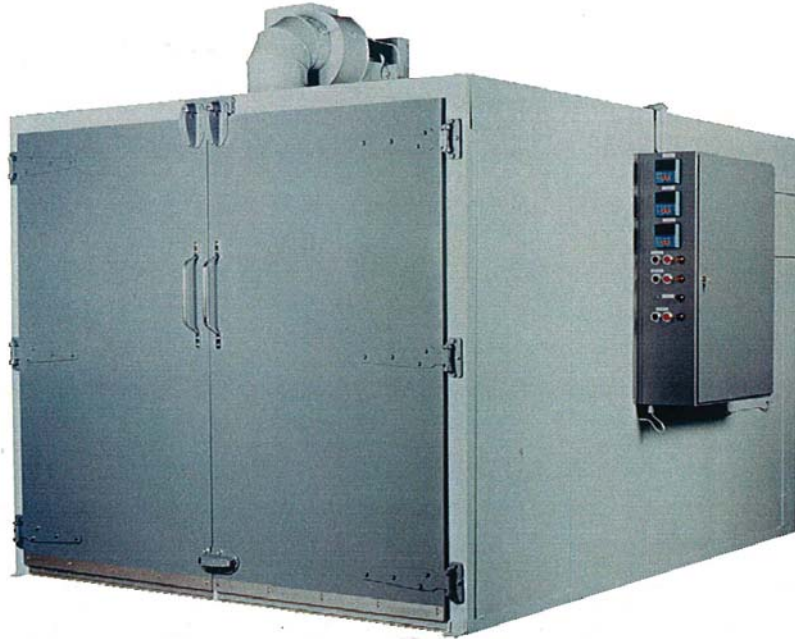
Both the power washer and convention oven employ an exclusive EIC Group electrical control panel designed for functionality and easy operation.

Each function is clearly labeled and all temperature controllers (analog and/or digital) are mounted on the panel's face for easy monitoring. All electrical control panels are manufactured to the "National Electric Code". We also offer custom-designed panels to meet any specification.



Total Systems, Total Solutions

Batch Ovens



Economical batch ovens can save you space and money, and EIC Group can provide you with a gas-fired or electric-heated oven that is just the right size for your needs.

Available in 6-, 7- and 8-ft. heights, the combinations of sizes in widths and lengths are almost endless. Or, custom sizes are available. Standard features include digital temperature control, uniform temperature and temperature backup controls. Ask about other standard features or customizable options. Batch ovens are available in full horizontal air flow patterns or horizontal/vertical air flow.

Ask your sales representative how we can accommodate your needs with a quality batch oven from EIC Group.

Total Systems, Total Solutions



www.eicgroupusa.com
Office: 214-477-1344 • Fax: 972-317-6889

