

**T9-MH-XL Low Profile**

The **T9-2' x 2' x 6" Low Profile** can be used in a **DIRECT or INDIRECT** application. This fixture can be hung by cables and is perfect for lighting Sports and Conventional Buildings 15 to 90 feet high.

The **T9-630 watt model** replaces all existing 1000 Watt fixtures with a **37% energy savings and more light**.

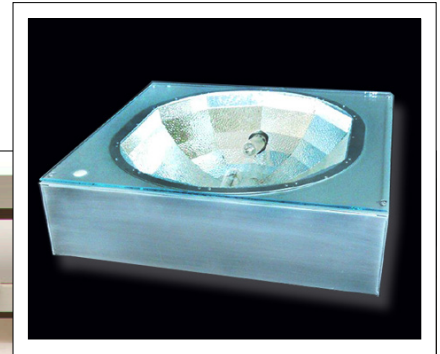
T9 Ceramic Metal Halide Lamps last 30,000 hours which is twice the life of existing HID lamps. Lamp depreciation at 12,000 hours is only 10%.

The Color Rendering Index is 90+ which means the lamp color is consistent with no color shifting.

They are easy to install and the electronic ballasts are integral and dimmable.

**Description**

- 24" x 24" x 6" Steel housing with **Best Lights Patented Super Reflector Technology**.
- Two T9 lamps with two integral 200 to 480 volt electronic dimmable ballast.
- Tempered Glass Lens.
- Fixture comes prewired and ready to install.
- Standard voltage 200 to 480 volt.
- Powder coated white or color.



**MSU Engineering Library** – using only 60 - 420 Watt fixtures for a **50% Energy Savings**, they increased light levels from 38 FC to 86 foot-candles.

| T9-MH-XL-2 x 2 Low Profile |                | Ordering Information: (Example: T9-MH-XL-LP/420W/ST/6W/LI/GL/HK6) |                 |    |             |        |                         |     |
|----------------------------|----------------|---|-----------------|----|-------------|--------|-------------------------|-----|
| Lamp                       |                | Specify Voltage   | Specify Fixture |    | Whip & Plug |        | Options                 |     |
| T9-210W                    | 1-T9 Lamp      | 200 to 480  | Steel           | ST | 6'          | W6     | Lamp Included           | LI  |
| T9-315W                    | 1-T9 Lamp      |   | Aluminum        | AL | 8'          | W8     | Glass Lens              | GL  |
| T9-420W                    | 2-T9 210 Lamps |   |                 |    | 12'         | W12    | Cable Mount Hanging Kit | HK  |
| T9-630W                    | 2-T9 315 Lamps |   |                 |    | 20'         | W20    |                         |     |
|                            |                |   |                 |    | 15 Amp 277V | L7-15P |                         | 6'  |
|                            |                |   |                 |    |             |        |                         | 8'  |
|                            |                |   |                 |    |             |        |                         | 10' |
|                            |                |   |                 |    |             |        |                         | 12' |



**PATENTED**

[www.bestlights.com](http://www.bestlights.com)



100 Park Drive, Troy, Michigan 48083 ■ Ph: (248) 588-4980 ■ Fx: (248) 589-0134 ■ Toll Free (US Only) ■ (800) KIL-A-WAT (545-2928)

BEST Lights are made in America