



Bio-logic® **Scout[®] SPORT**

PC-Based Diagnostic OAE System

Why Do Professionals Choose Scout Sport as their PC-based OAE System of Choice?

Scout Sport's Windows®-based software features easy-to-use menus with a library of diagnostic OAE protocols:

- Standard with DP & TE test modalities
- Built-in diagnostic protocols
- DP normative data for analysis & display
- Easily customizable protocols
- DPOAE maximum frequency range to 10,000 Hz
- Easily interpreted screen display
- All numeric data points available on screen

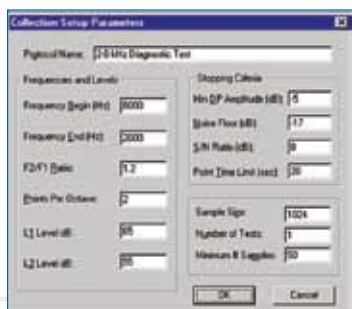


*Can be used as a
complement to
the Bio-logic
Navigator® Pro
AEP System*

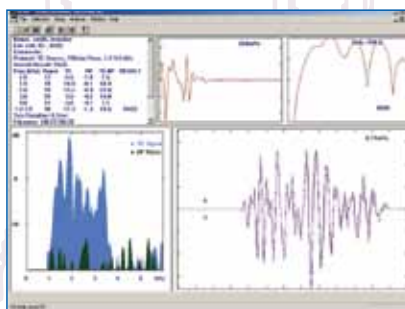
Bio-logic® *Scout* SPORT

- Easy-to-use software with pre-loaded DP & TE Protocols
- Simple USB connection to the PC
- Full range of otoacoustic emission test capabilities – DPOAE/TEOAE

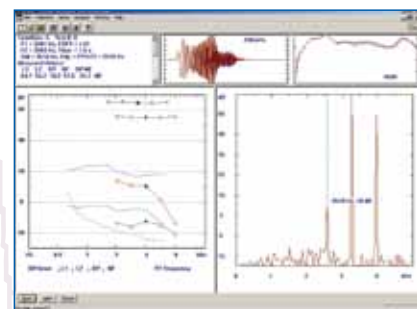
Scout OAE Software adds flexibility & complements existing Bio-logic brand hearing products such as Bio-logic Navigator® Pro AEP System and Bio-logic AuDX® Pro OAE Screener



Customize protocols to your program needs



TEOAE capability



Reference data information assists interpretation

Is an OAE Test Reimbursable?

There are two CPT codes for OAE testing: 92587 (Screening otoacoustic emissions; limited) and 92588 (Evoked otoacoustic emissions; comprehensive or diagnostic evaluation). According to the Medicaid Bulletin for Audiological Services (November 2007), the national average reimbursement amount is \$53.08 for CPT code 92587, and \$70.90 for CPT code 92588.

Your Bio-logic Representative:

Natus Medical Incorporated
1501 Industrial Road
San Carlos, CA 94070 USA
Ph: (847) 949-5200
Fax: (847) 949-8615

Global Sales & Support
1-800-303-0306

www.natus.com

©2011 Natus Medical Incorporated
P/N 006574C



Special Olympics
Natus Medical Incorporated is an
Official Healthy Hearing Sponsor
of Special Olympics.

CE Certified

**Trusted Reliability.
Flexible Innovation.
Proven Excellence.**

natus.
hearing diagnostics