



Emacs CAD Solutions Ltd

"Raising the Standards"



P R O F I L E

ARCHITECTURE

ART

HOUSING

About Emacs CAD Solutions Ltd.

Emacs CAD Solutions Ltd is a dynamic Team that harnesses raw talent and takes it to the next level. With a passion to raise the standards, Emacs will satisfy and exceed your requirements.

We offer **solutions** for the following:

- Sustainable architecture with a specialisation in housing,
- Alternative materials and building construction methods.
- Art, photography and interior design,
- Master Planning and Urban Design.
- Capacity Building

Emacs is sensitive to the needs of society and has since established Hope For Orphans which supports Orphans and other Vulnerable Children (OVCs), in their environment and in a sustainable way.

The Emacs Team is led by:

Arch. Emmanuel S. Milikau B.Arch. (Hons), M. Arch (UON), MAAK (A), Reg. Arch (Kenya), MACCEPS

With a passion for excellence, Arch Emmanuel S. Milikau has over 23 years' experience in a wide range of architectural and interior design projects in Kenya, Seychelles, Botswana, Tanzania, Uganda and Rwanda with a specific expertise in housing and commercial projects, and has travelled to UAE, India, Singapore, South Africa and China for research into alternative building materials and methods.

He has co-ordinated large housing projects for the government of Seychelles in Mahe – Seychelles and in Kenya, and has vast experience in design and co-ordination of residential and housing projects, from luxurious private residential homes, to commercial apartments and housing units/estates both low and up market.

Arch Emmanuel S. Milikau has taught at the departments of architecture of the University of Botswana and Jomo Kenyatta University of Agriculture and Technology.

Mrs. Jeddy C. Milikau B.A. Hons (Anthropology), MBA (UON), HDip (HRM), CPT, Reg MRM
Hardworking, honest, focused and God-fearing individual who brings out the best in people.

Jeddy is a good team player, highly motivated, enthusiastic and passionate about fulfilling personal and corporate goals. She is a partner at Emacs and has an MBA majoring on Human Resources. She ensures that systems are working and directs the human resource function.

VISION

The Emacs Vision is to be an excellent provider of life enhancing solutions.

MISSION

The Emacs Mission is the provision of sustainable housing and architecture, delightful art and empowering lives through capacity building.

CORE VALUES

The Emacs Core Values are:

- Excellence
- Integrity
- Teamwork and Client Involvement
- Customer Service
- Honest Communication
- Entrepreneurship

OUR PORTFOLIO

Emacs has offered solutions to various clients through design, implementation and post occupation monitoring.

These have been undertaken in Kenya, Seychelles, Botswana, Uganda, Rwanda, South Africa and Tanzania.

The services offered are in the following categories:

- Single Residences
- Multiple Housing
- Hotels and Resorts
- Office Blocks
- Institutions and Master plans
- Interiors

OUR CAPABILITIES

Emacs brings together a synergy of various specialisations led by the directors and senior staff.

We provide solutions through the various stages of project implementation right from feasibility and inception through to completion and post occupancy evaluation.

The Emacs Core Services include but are not limited to:

- Architecture, especially housing.
- Art and Interior Design.
- Research into alternative materials and construction technologies.
- Project coordination, management and value engineering.
- Contract Management.
- Master Planning and Urban Design.
- Capacity Building.

Emacs values and recognises talent and variety from other professions and approaches its solutions provision using the consortium approach.

DESIGN PHILOSOPHY

Our design philosophy is based on the following:

Collaboration:-

Based on team building. Before any ideas are generated and/or set in stone, we engage in a visioning or "idea" session. This is an intense goal-setting session where all of the key team members (senior administration and the long-range planning committee) can interact and commit to a common set of goals and objectives. The synergy and "buy-in" created at this initial phase sets the tone for the project and becomes the benchmark against which ideas and their value toward meeting our clients' goals.

Consensus-building:-

A key ingredient to successful design projects. EMACS believes that successful projects are only possible with good communication among all project team members throughout the planning and design process.

Good communication:-

Begins with good listening. We listen to our clients' goals, aspirations, expectations and needs. We want to understand the critical factors necessary for our clients' success. In addition, we believe that good decisions are only made by well-informed team members. Therefore, the timely distribution of information and the identification of the appropriate format and forum for information contribute to good communications.

Leadership:-

The most important element of successful project delivery. Defining roles and responsibilities, defining a clear decision-making process, and assigning accountability are all part of Our firm's leadership ethos.

EMACS CAD SOLUTIONS LTD,

RAMCO COURT, BLOCK A FIRST FLOOR,
SUITE A 22, MOMBASA ROAD.

P. O. BOX 668-00200, CITY SQUARE,
NAIROBI – KENYA.

Tel: +254 (0) 771 912030

Cell: +254 (0) 725 800285

+254 (0) 720 897157

Email: info@emacscad.com

emmanuel@emacscad.com

Website: www.emacscad.com



PROJECT CATEGORIES



**SINGLE RESIDENCES
MULTIPLE HOUSING
HOTELS & RESORTS
OFFICE BLOCKS
INSTITUTIONS & MASTERPLANS
INTERIORS**

SINGLE RESIDENCES



RESIDENTIALS IN KAREN (AIU). NAIROBI, KENYA.

DESIGN & Build Services for the 3No Executive Town Houses, and infrastructure, done in a prairie and modern style.

Year: 2017 - 2020
Project Cost: KES 58,000,000.00
Status: Complete



RESIDENCES IN LAVINGTON. NAIROBI, KENYA.

DESIGN & BUILD Services for a 2No Four Bedroom allensuite Houses and infrastructure.

Year: 2018 - 2020
Project Cost: KES 24,000,000.00
Status: Complete

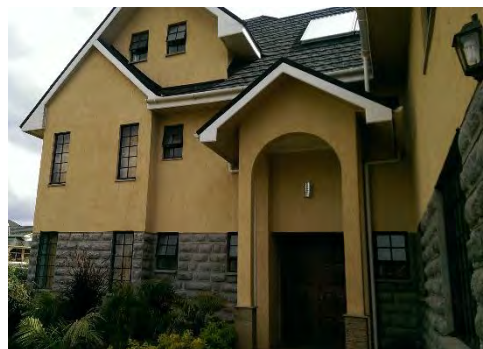
SINGLE RESIDENCES



RESIDENCE IN KAREN PLAINS. NAIROBI, KENYA.

DESIGN & Supervision Services for the 5 Bedroom Executive House, and infrastructure, done in a prairie and modern style.

Year: 2013 - 2015
Project Cost: KES 35,000,000.00
Status: Complete



PRIVATE RESIDENCE IN KAREN. NAIROBI, KENYA.

DESIGN & SUPERVISION Services for a 5 Bedroom all ensuite House and infrastructure.

Year: 2012 - 2014
Project Cost: KES 25,000,000.00
Status: Complete

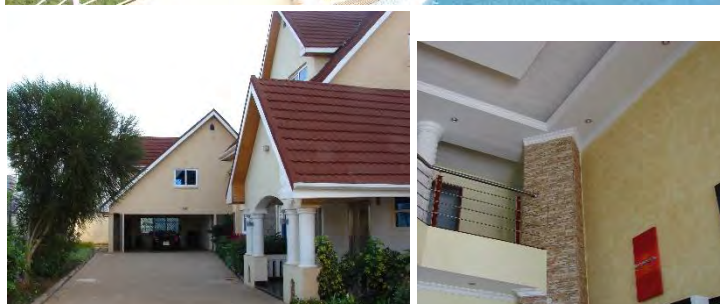
SINGLE RESIDENCES



PRIVATE RESIDENCE IN KAREN, NAIROBI, KENYA.

DESIGN & SUPERVISION Services for the 5 Bedroom Executive House, Swimming Pool and infrastructure.

Year: 2013 to 2015
Project Cost: KES 55,000,000.00
Status: Complete

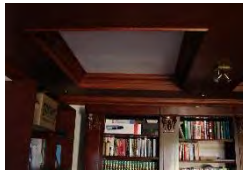
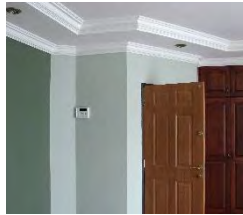


PRIVATE RESIDENCE IN RUNDA, NAIROBI, KENYA.

DESIGN & BUILD Services for 6 Bedroom Executive House, Clubhouse, swimming pool and infrastructure.

Year: 2007 to 2008
Project Cost: KES 30,479,211.00
Status: Complete

SINGLE RESIDENCES



PRIVATE RESIDENCE IN RUNDA, NAIROBI, KENYA.

RENOVATIONS Services for the 5 Bedroom Executive House, and infrastructure.

Year: 2008

Project Cost: KES 3,500,000.00

Status: Complete



PRIVATE RESIDENCE IN MUTHITHI GARDENS, NAIROBI, KENYA.

DESIGN & BUILD Services for the 4 Bedroom Executive House and infrastructure.

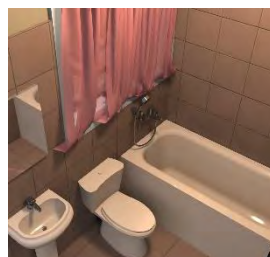
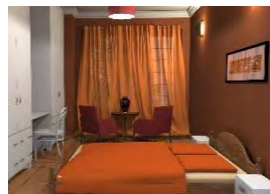
Year: 2007 to 2009

Project Cost: KES 12,500,000.00

Status: Complete



MULTIPLE HOUSING



KAPUTIEI BOMA.
KITENGELA, MACHAKOS, KENYA
DESIGN, PRE-CONTRACT Services
for 30 No 3 bedroom semidetached
houses with, borehole, Biobox and
plenty of open green spaces.
A recreation space is incorporated.
Year: 2018 to 2019
Project Cost: KES 226,000,000.00
Status: Complete



4 BEDROOM TOWNHOUSES.

LORESHO, KENYA.

DESIGN, PRE-CONTRACT Services for 3No. 4 Bedroom all ensuite Town Houses and infrastructure.

Year: 2016 - 2017

Project Cost: KES 75,000,000.00

Status: Complete



APARTMENT BLOCK.

KISUMU, KENYA.

DESIGN, PRE-CONTRACT Services for 8 No. 2&3 Bedroom all ensuite modern apartments and infrastructure.

Year: 2015 - 2016

Project Cost: KES 44,000,000.00

Status: Complete



PALM SUITES SHANZU. **MOMBASA, KENYA.**

DESIGN & SUPERVISION Services
for 9 No. 4 Bedroom all ensuite Town
Houses, a Clubhouse and
infrastructure.

Year: 2014 - Present
Project Cost: KES 235,300,000.00
Status: Pre-Contract Complete



APARTMENT BLOCK.

THIKA, KENYA.

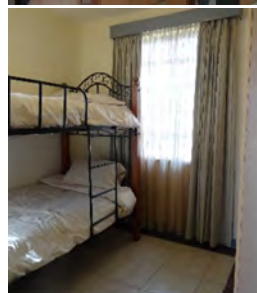
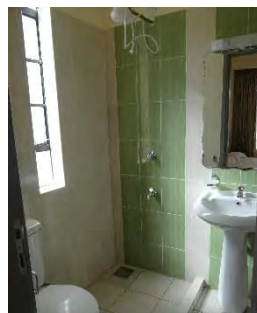
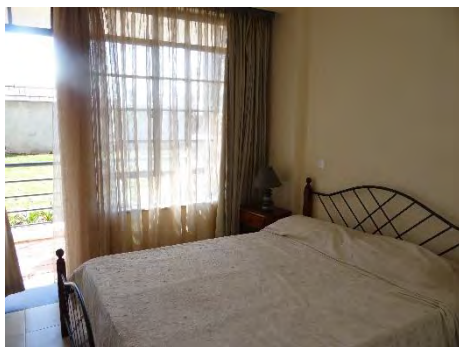
DESIGN & SUPERVISION Services for 35 No 2 & 3 bedroom apartments with master ensuite, balconies, dhobi areas.

Year: 2012 to 2015

Project Cost: KES 85,000,000.00

Status: Complete

MULTIPLE HOUSING



OLONYORI ESTATE.
SYOKIMAU, MAVOKO, KENYA
DESIGN & SUPERVISION Services
for 240 No 2 bedroom apartments
with, borehole, Biobox and plenty of
open green spaces. A recreation
park is incorporated.
Year: 2011 to 2013
Project Cost: KES 600,000,000.00
Status: Complete



PROPOSED RESORT IN SIAYA. **RANGÁLA, SIAYA COUNTY.**

DESIGN and supervision for Guesthouse, Clubhouse, Pool & Pool house, Conference House, Cottages and Restaurant.

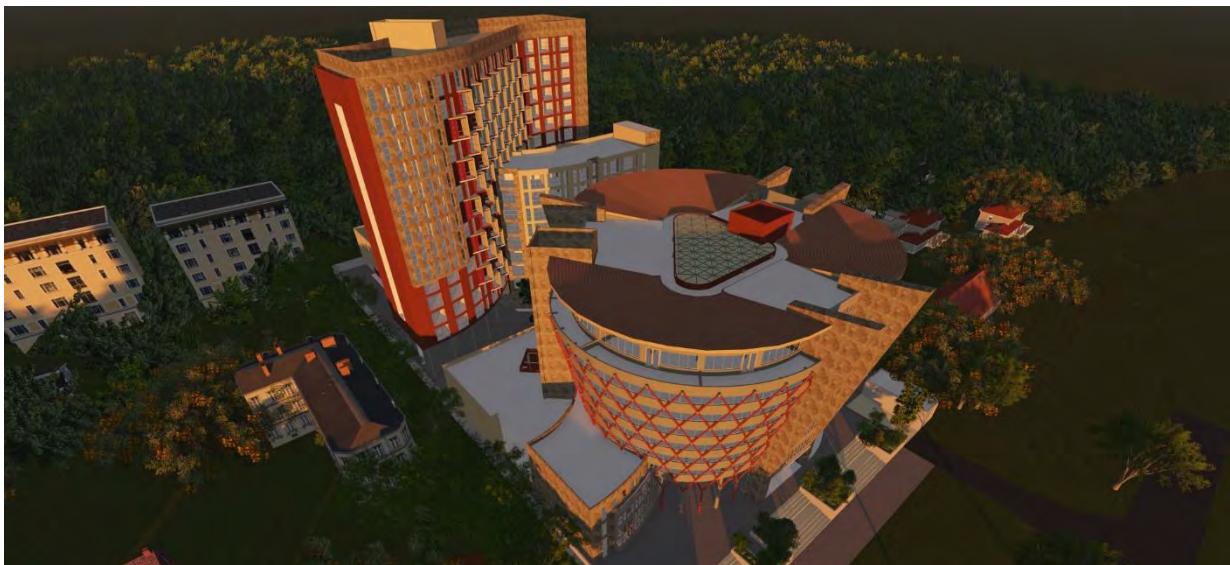
Year: 2016 - 2019
Project Cost: KES 200,000,000.00
Status: Complete



Proposed RESORT, LAMBWE **HOMABAY COUNTY, KENYA.**

DESIGN & SUPERVISION Services on 120 acres for a master plan and high end, sustainable Eco Lodge.

Year: 2014 - Present
Project Cost: KES 200,000,000.00
Status: Ongoing



PROPOSED MIXED USE COMPLEX.

NGONG ROAD, NAIROBI, KENYA.

DESIGN for proposed Retail, Office, Hotel, Serviced Apartments, Parking and infrastructure.

Year: 2015

Project Cost: KES 6,800,000,000.00

Status: CONCEPT Complete



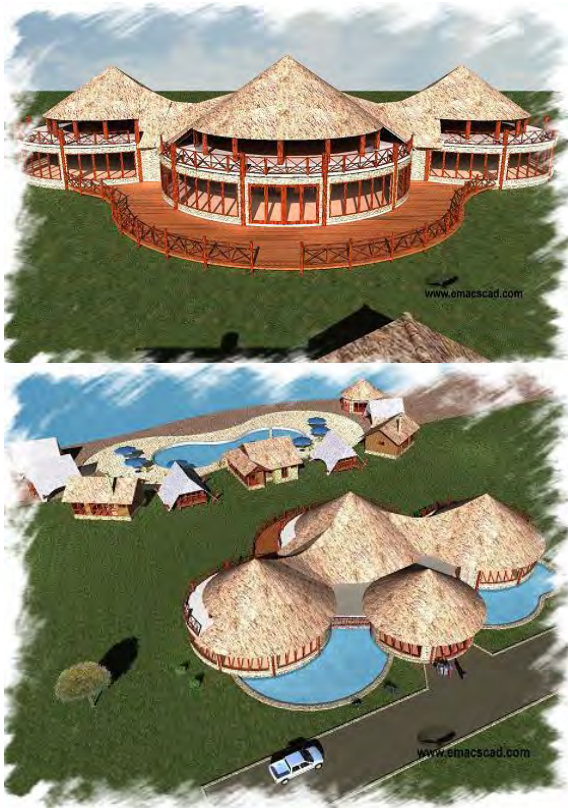
PROPOSED GREEN HOLIDAY CONDOS **MOMBASA, KENYA.**

DESIGN for Proposed Two and Three bedroom Condos maximising the ocean views, 'green' technology and infrastructure.

Year: 2012

Project Cost: KES 200,000,000.00

Status: Pre-Contract Complete



PROPOSED VICTORIA TENTED CAMP.

LAKE BUNYONYI, UGANDA.

DESIGN for resort that celebrates the Lake communities and embraces Green Design concepts.

Year: 2007 to 2008
Project Cost: KES 100,000,000.00
Status: Concept Complete.



PROPOSED MIWANI RESORT.

L. VICTORIA, KISUMU, KENYA.

DESIGN for a resort with fish ponds as the focal point, and celebrates the local culture.

Year: 2007 to 2008
Project Cost: KES 100,000,000.00
Status: Concept Complete.

OFFICE BLOCKS



PROPOSED MULTI-PURPOSE ACADEMIC BUILDING. NAIROBI, KENYA.

DESIGN & SUPERVISION for a
smart, green and energy efficient
building and attendant infrastructure.

Year: 2016 - 2018
Project Cost: KES 600,000,000.00
Status: Precontract Complete



PROPOSED NGILAI MALL.
MARALAL, SAMBURU, KENYA
DESIGN & SUPERVISION Services
for a modern shopping mall and
attendant infrastructure.

Year: 2016 to 2017

Project Cost: KES 100,000,000.00

Status: Precontract Complete

OFFICE BLOCKS



PROPOSED SAVANNAH SHOPPING CENTRE.

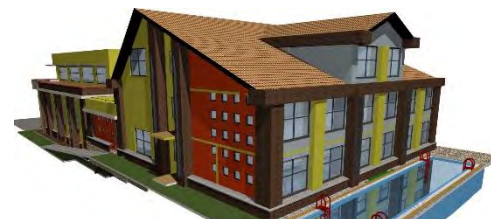
EMBAKASI, NAIROBI, KENYA.

DESIGN & Supervision Services for a Commercial Centre and attendant infrastructure.

Year: 2014 - 2016

Project Cost: KES 200,000,000.00

Status: Complete



PROPOSED TRAINING & CONFERENCE FACILITY.

RIDGEWAYS, NAIROBI, KENYA

DESIGN & SUPERVISION Services for a training and conference facility complete with accommodation.

Year: 2015 to 2016

Project Cost: KES 200,000,000.00

Status: Pre-Contract Complete



PROPOSED OFFICE BLOCK.

MOMBASA, KENYA.

DESIGN & SUPERVISION for an energy efficient office block that responds to its environment, and attendant infrastructure.

Year: 2013 - 2014

Project Cost: KES 200,000,000.00

Status: Pre-Contract Complete



PROPOSED OFFICE BLOCK ON MOMBASA ROAD.

NAIROBI, KENYA.

DESIGN & SUPERVISION for Proposed Office Block and infrastructure.

Year: 2012

Project Cost: KES 200,000,000.00

Status: Concept Complete.



PROPOSED FACILITIES MASTER PLAN.

RUIRU, NAIROBI, KENYA.

DESIGN & SUPERVISION for a smart, green and energy efficient University Master Plan and attendant infrastructure.

Year: 2017 - 2019

Project Cost: KES TBA

Status: Complete



PROPOSED OFFICE BLOCK. **MOMBASA, KENYA.**

DESIGN & SUPERVISION for an energy efficient office block that responds to its environment, and attendant infrastructure.

Year: 2013 - 2014
Project Cost: KES 200,000,000.00
Status: Concept Complete.



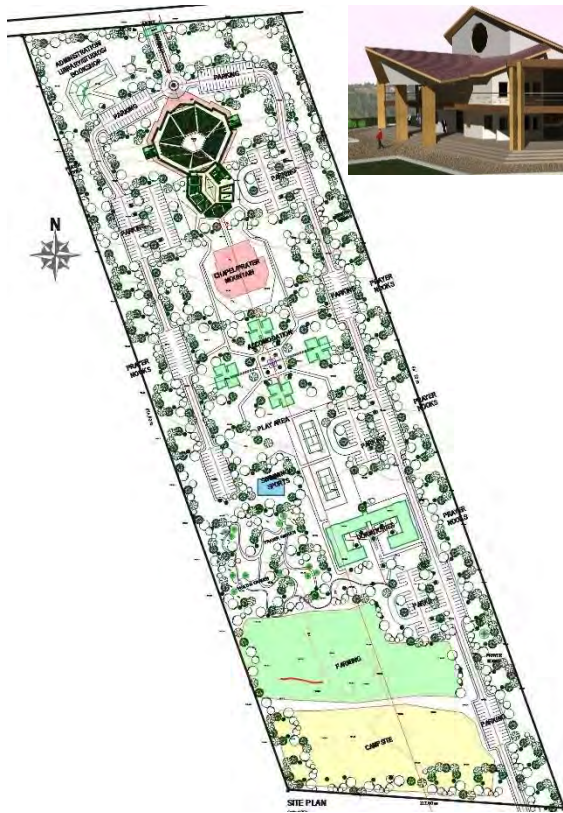
PROPOSED CHAPEL & WEDDING GARDENS, NAIROBI, KENYA.

DESIGN & SUPERVISION for an all inclusive modern wedding centre.

Year: 2016 - Present

Project Cost: KES 70,000,000.00

Status: Concept Complete



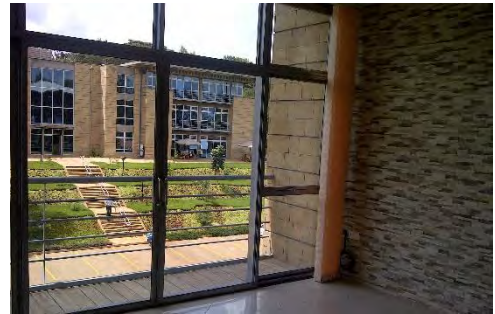
**KENYA HOUSE OF PRAYER,
OPERATION SOLOMON.
KISERIAN, KAJIADO, KENYA**
DESIGN & SUPERVISION Services
for the Master Plan Complex on 30
acres.

Year: 2013 - 2014
Project Cost: KES 1 B
Status: Concept & Scheme.



**PROPOSED SCIENCE COMPLEX,
BEVERLY SCHOOL.
KINANGOP, KENYA.**

DESIGN & SUPERVISION services
for Beverly Schools of Kenya.
Year: 2010 to 2012
Project Cost: KES 200,000,000.00
Status: Complete



PROPOSED OFFICE FITOUT.

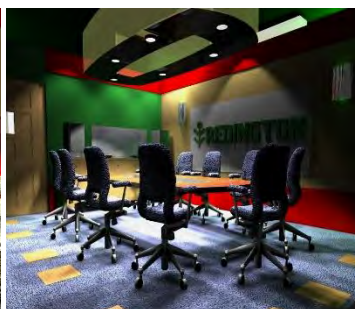
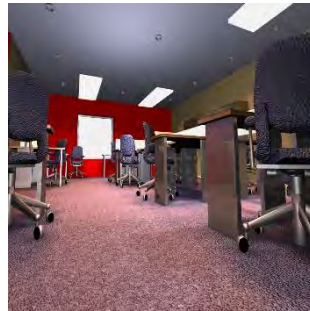
KAREN, NAIROBI, KENYA.

DESIGN & SUPERVISION for office fit out.

Year: 2012

Project Cost: KES 10,000,000.00

Status: Complete



PROPOSED OFFICE FITOUT.

WESTLANDS, NAIROBI, KENYA.

DESIGN & SUPERVISION for office fit out.

Year: 2009

Project Cost: KES 9,500,000.00

Status: Pre-Contract Complete



PALM SUITES SHANZU.

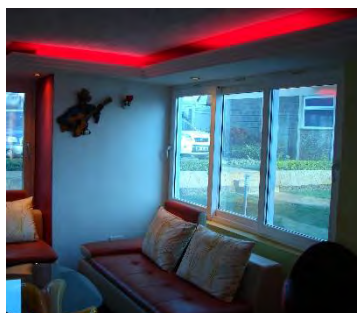
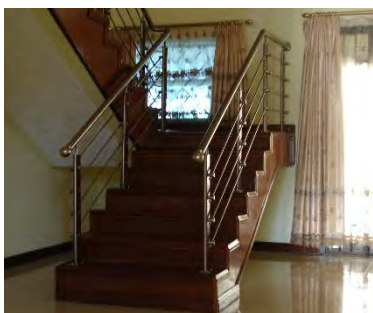
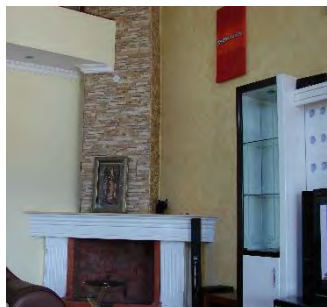
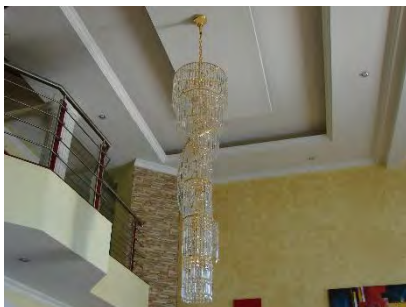
MOMBASA, KENYA.

DESIGN & SUPERVISION Services for 9 No. 4 Bedroom all ensuite Town Houses, a Clubhouse and infrastructure.

Year: 2014 - Present

Project Cost: KES 235,300,000.00

Status: Pre-Contract Complete



PRIVATE RESIDENCE IN RUNDA.

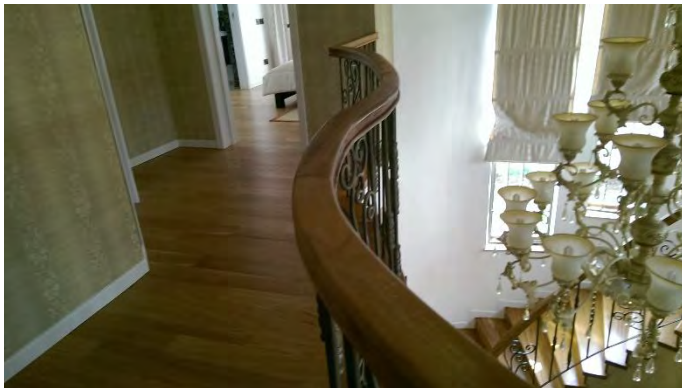
NAIROBI, KENYA.

DESIGN & BUILD Services for 6 Bedroom Executive House, Clubhouse, swimming pool and infrastructure.

Year: 2007 to 2008

Project Cost: KES 30,479,211.00

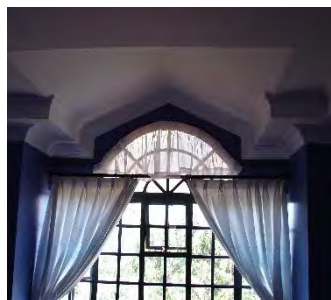
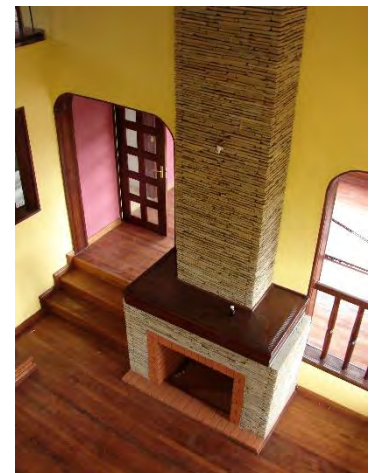
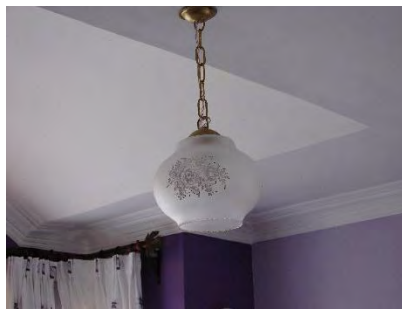
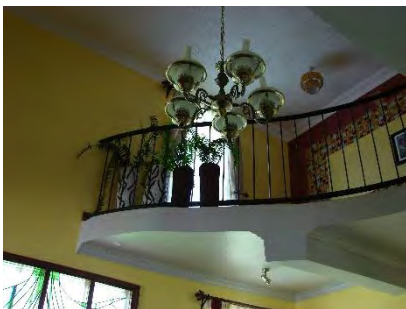
Status: Complete



RESIDENCE IN KAREN PLAINS. NAIROBI, KENYA.

DESIGN & Supervision Services for the 5 Bedroom Executive House, and infrastructure, done in a prairie and modern style.

Year: 2013 - 2015
Project Cost: KES 35,000,000.00
Status: Complete



PRIVATE RESIDENCE IN MUTHITHI GARDENS. NAIROBI, KENYA.

DESIGN & BUILD Services for the 4 Bedroom Executive House and infrastructure.

Year: 2007 to 2009
Project Cost: KES 12,500,000.00
Status: Complete

COPYRIGHT: EMACS CAD SOLUTIONS LTD 2018

**info@emacscad.com
emmanuel@emacscad.com
www.emacscad.com**