

WATERFRONT PRODUCTS by PMI

Boat Show and Open House Pricing



Otter Island Family Fun Float



Wave Port PWC Floats



Wave Armor Floating Dock



The WaterPad by PMI



Sun Spot Inflatable Raft



Anchors
For All Waterfront
Products



Kayak Float
For Easy Stable Launching



Dock Ladders



Dock Steps

*Easy
In & Out
of the Water*



Dock, Pier, and Boat Protection You Can Count On

YOUR LOCAL DEALER

FLOATING DOCK BY WAVE ARMOR



Stability on the water is the most important feature of floating dock. If you can't walk on it without it feeling wobbly, nothing else matters. Wave Dock is 5' wide with suction pockets molded in the bottom that helps it hug the water. It sits only 16" off the water.

It's the most stable floating dock on the market.

It's foam filled and steamed making it virtually indestructible. 10 YEAR WARRANTY.



10' long x 5' wide **\$1799**

The wider the dock the more stable it is on the water.



\$159

24"

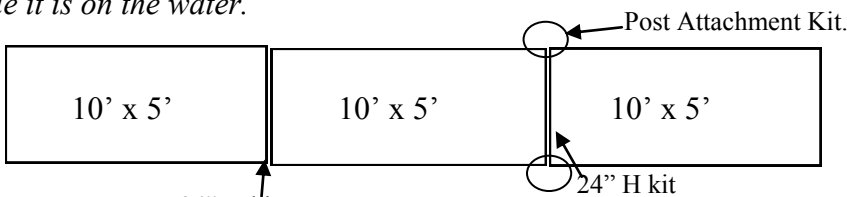


Kit of 2
H connectors



Pieces lock together with our unique H Beams.

Here are a couple of examples showing simple dock designs.

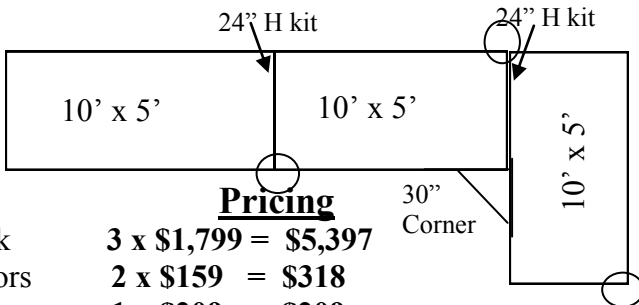


24" H kit

Pricing

10' x 5' Dock Sections **3 x \$1,799 = \$5,397**
24" H Dock connectors **2 x \$159 = \$318**
Post Attachment kits **1 x \$209 = \$209**

Example shown \$5,924



Pricing

10' x 5' Dock **3 x \$1,799 = \$5,397**
24" Connectors **2 x \$159 = \$318**
30" Corner **1 x \$209 = \$209**
Post Attachment Kit **2 x \$209 = \$418** **Example shown \$6,342**



Post Attachment Kit \$209 (Set of 2)
Pier pipe goes through the kit keeping the dock from moving with currents.



7' Dock Ramp Kit \$929
12'8\"/>



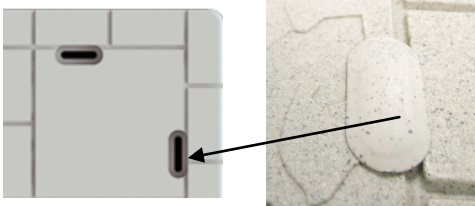
30" Corner \$209
Fill corners where docks come together at right angles.



5' Dock Bench Kit \$728 Bench & mount
The 5' bench is off the dock for more useable dock space. Sits 2 comfortably.



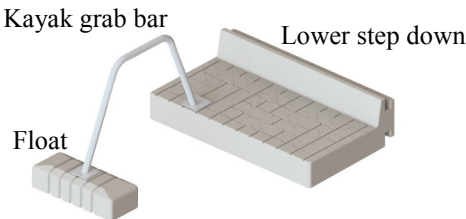
Folding Ladder \$344
Mounts in the H-Beam on the side of the dock.



Decorative Snap-In Plugs \$34 (20)
Cover the accessory indents on the dock. Dress up the dock for a clean appearance.



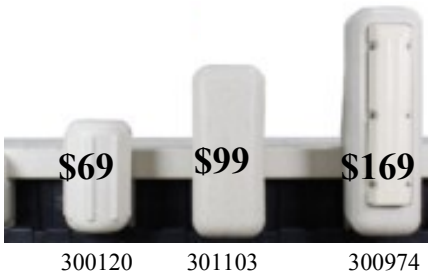
Lower Step-Down \$479
Provides water level access to the dock.



Kayak Assist Kit \$675
Stability for canoes or kayaks. Kit comes with lower step down section, grab bar, and float.



Kayak Rack \$379
Rotationally molded plastic. Attaches to our dock in the H-Beam channel. Also works with paddle boards.



Wave Dock Bumpers

Choose either 15", 34", & 44" tall
Slides into the H Beam Channel.



Horizontal Bumper \$89

Slides into the H Beam Channel.



Dock Post Covers \$84 (Set of 2)

A decorative way to cover pier pipes.

For more information on Wave Armor Dock see **WaveArmor.com** or **PMImarine.com**

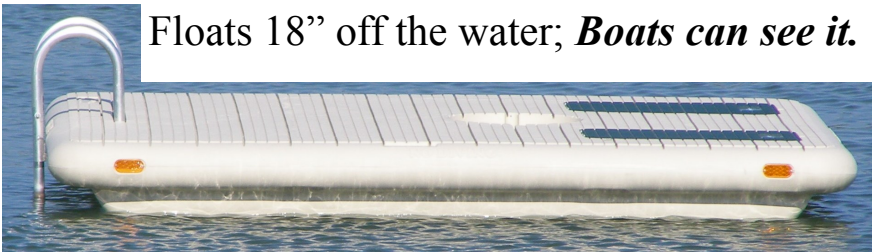
OTTER ISLAND \$1799



Foam Filled-Virtually Indestructible. 8’ x 10’, 3000 lb. capacity, weighs 300 lbs. **3 year warranty.**

- Fold Down Lounges & Table-when you want a smooth flat deck.
- Storage Under Seat Backs-keep a sponge or brush for cleaning.
- 3 Step Aluminum Flip Up Ladder-even heavy swimmers can board easily.
- Rounded Corners & Non Slip Surface-safe for the youngest swimmers.
- Molded in Eyelets-for anchoring or pulling in or out of the lake.

Yellow or Beige Float Base; Green or Blue Table & Lounge Backs.



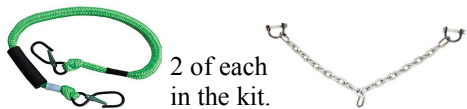
Floats 18” off the water; *Boats can see it.*



Three step ladder accommodates swimmers up to 300 lbs.

Table and lounges fold flat when you want a big play area.

Double Mooring Kit STANDARD



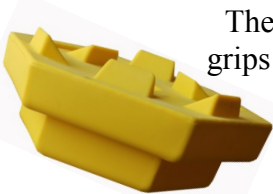
2 of each in the kit.

Modern ski boats throw 3’ wakes. The clevis kit spreads stress between the mooring eyes. The bungees help absorb shock.



Anchor \$94

Fill it with sand and it weighs 140 lbs.



The underside grips the bottom.

10” tall, 26” wide. Eye bolt for anchoring. Plastic screw-on cap.



An 8’ x 8’ swim raft.

The Inflatable Sun Spot by PMI \$299

8’ x 8’ with backrest, cup holders, & storage.



Detachable backrest with drink storage and cup holders.



A family fun station.

Sits 10” high in the water. 800 lb. capacity, 600 gram vinyl air chambers & rubber bladder, 21 oz. fabric top, & 6mm vinyl bottom. Soft on the top, strong on the bottom. We specify extra handrails in the center to help larger swimmers pull themselves onto the raft.



Air Pump Included.



Anchor point to secure your raft.



Reinforced eyes



6 grab handles. Easy to pull yourself on.



Marine grade fabric protects against abrasions or punctures.

No one wants to be disappointed with a water product after a few weeks use. We take special precautions to provide you a quality product. The rubber bladder is encased in heavy duty vinyl on the bottom and marine grade fabric (soft on skin) on the top. We special order the raft with extra handles in the center to make it easier to board. Straps and handles are attached with reinforced stitching.

THE WATERPAD



Virtually unsinkable, supports up to 1800 lb., 6' wide x 1 1/4" thick.
Rolls up for storage or transport in a pick-up, SUV, or on the boat.
Comes standard with two mooring holes and one mooring kit.



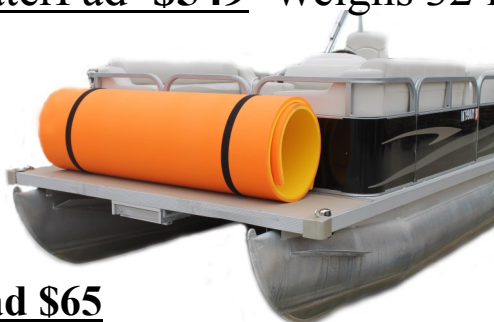
Storage straps included.



Protective Bag for WaterPad \$65

Protective canvas bag comes with a full length zipper, breathable mesh sides, and straps for easy carrying.

9' Mini WaterPad \$325 Weighs 16 lb.
18' Deluxe WaterPad \$549 Weighs 32 lb.



The WaterPad has one mooring kit. Mooring kit includes a plastic fitting, a 10' long bungee, and a carabineer clip.

The 9' is easily transported. It rolls to about 24" round and is plenty for groups of 3-5.
The 18' rolls to about 48" round and is more difficult to transport. Buy it for larger groups.

Get In and Out of the Water Easily with Dock Steps

Sea Wall or Dock Boarding Steps

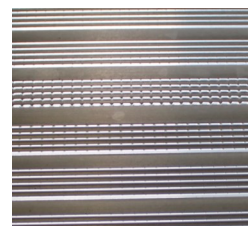
One handrail standard.
Additional handrail \$65



Steps are 35" wide x 11" deep with a 350 lb. capacity per step.
Steps are 7" apart and embossed non-skid aluminum impervious to water.

21" top step Three Step w/handrail \$310
28" top step Four Step w/handrail \$375
35" top step Five Step w/handrail \$470

Aluminum frame & steps. Stainless Steel hardware.



Non-skid tread

Water shoes are generally recommended with the Sea Wall steps. There can be sharp edges.

For heights over 35" tall we recommend the steps listed below.

Bolt to Dock or Free Standing Adjustable Depth Boarding Steps

36" wide, thru-flow non-skid tread helps prevent algae build up on steps. No sharp edges to hurt feet: one handrail standard with each set of steps. Mount to a dock or sea wall or purchase optional rear legs for free standing application. 350 lb. capacity.



Dock mounting hardware standard



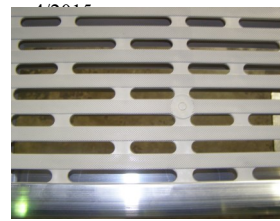
Back Legs Optional

3 Step adjusts 21" to 29" \$540*
4 Step adjusts 28" to 36" \$645*
5 Step adjusts 35" to 43" \$745*
6 Step adjusts 42" to 50" \$810*

** Mounted to Dock*

Extra Handrail (one is standard) \$79
Back Legs for free standing use \$59 3 step
Back Legs for free standing use \$125 4-6 step
Back legs with 4-6 steps include a back brace for extra strength.

36" wide x 10" deep steps, flow-thru tread, rounded aluminum extrusions. Steps are spaced about 7" apart. Standard front legs adjust 18". Handrail is 1 1/2" round aluminum. No sharp edges, no protruding hardware, even the bottom plate corners are rounded.

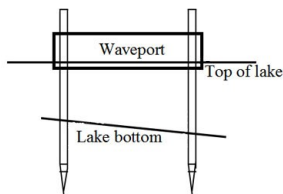
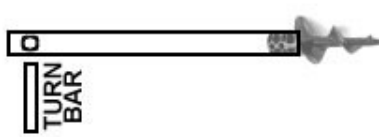


Flow-thru tread helps prevent algae build up.

Mounting Kits for SLX and EVO Jet Ski Floats

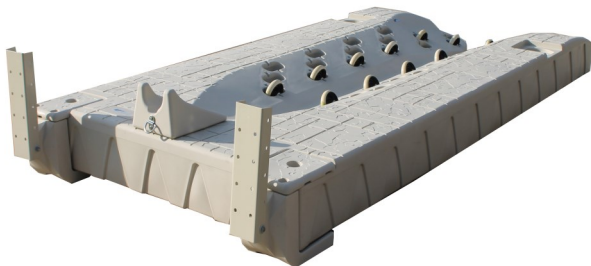
Because of preformed holes in the float body you may not need expensive installation kits. Most installations use two pier pipes in the lake bottom. But, the SLX can install to a fixed or floating dock, against a seawall.

Pier Pipe Mooring Kit \$184



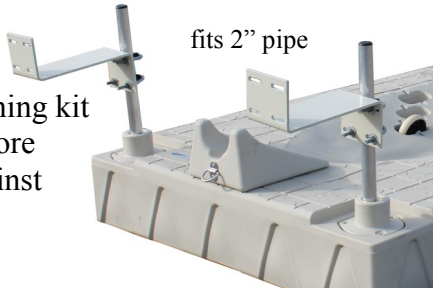
Put a couple pier pipes through the holes in the float body and you're done. *Everything you need.* Two pieces of 2" pier pipe (specify 8' or 10') with auger bottom, turn bar, and a 2" raised bushing kit.

Dock/Seawall Attachment Kit* \$249



Install with the knuckle and steel bracket kit. A steel plate attaches to the dock or seawall. The knuckle pivots for loading/unloading.

Attachment Kit for 18" Deep \$149



Raised bushing kit provides more surface against pier pipe.

Install to a fixed dock or sea wall with pipe and Z brackets (Pipe not included). Kit includes two Z brackets, reducer bushings, and hardware.



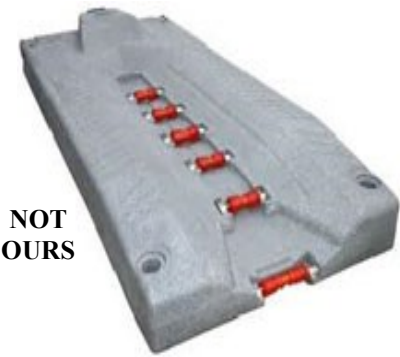
Port to Port Kit \$189

Connect two together



Comparing the SLX to Other Jet Ski Floats

Some brands don't have enough rollers and the PWC hull will come in contact with the plastic float body. Some brands require hundreds of dollars worth of installation and connector kits. Our twelve rollers prevent the PWC's hull from touching the float body and you can move them to get the perfect fit for any machine.



Your machine never comes in contacts the float body. Your PWC is supported by twelve soft rollers.



Kayak Launch Assist

Standard Launch Assist \$799

Includes mounting hardware. Specify type. 48" wide by 60" long. Weighs about 99 lbs. Roto Mold Plastic with Five Year Warranty. Virtually maintenance free. All hardware aluminum or stainless steel. Use with a kayak, Paddle board or a Canoe.



Shown with *optional* assist bar.

Optional Accessories



Back Grab Handles \$199



Overhead Assist Bar \$199

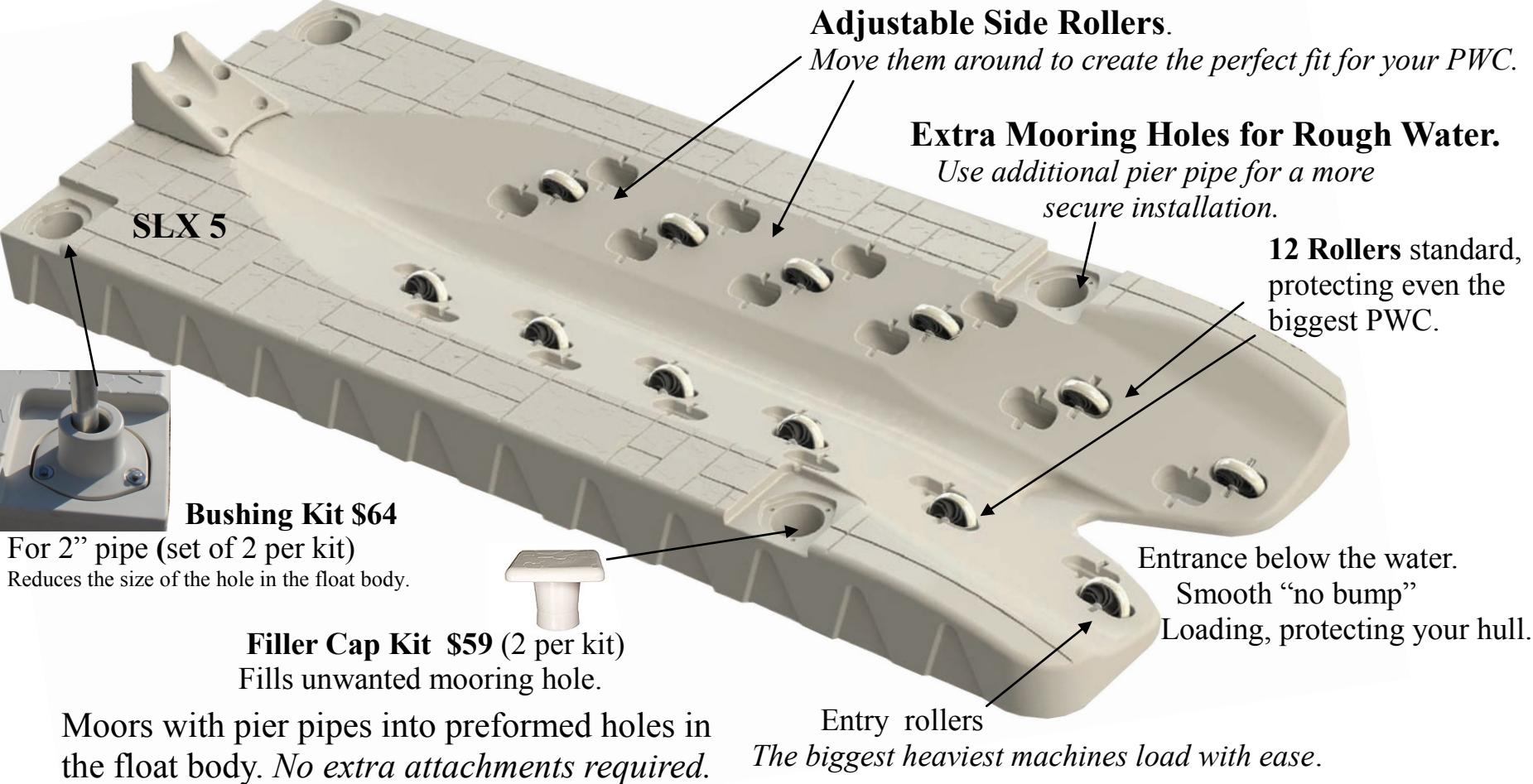


Shown with Both Assists \$398

Getting into a kayak on a rocky shoreline, in muck, or from a sea wall can be a challenge. It gets more challenging as you get older. Mounts against most stationary or floating dock or a sea wall.

SLX 5' OR 6' WIDE JET SKI FLOATS

12'8" long (*accommodates the biggest PWC's*). 12 rollers with 32 pockets for adjustment, (*fits any machine*) 5' or 6' wide. 6' when you want more walk around room to install a cover or perform maintenance. Moors with preformed holes in the float body.



SLX-5 12'8" long, 4'10" wide, 1500 lb. capacity **\$1699**

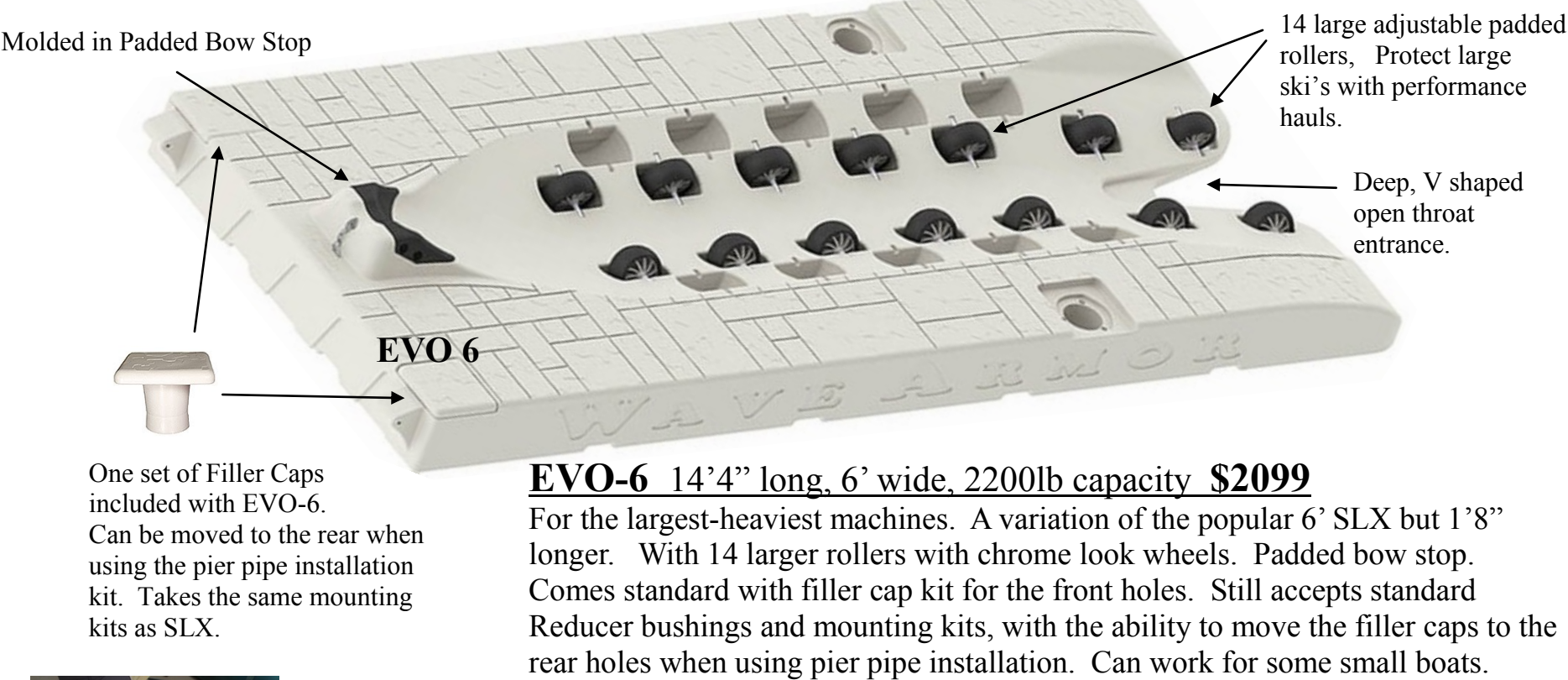
One benefit of the 5' wide SLX is that you can moor two in the common 10' wide dock well at many marinas.

SLX-6 12'8" long, 6' wide, 2000 lb. capacity **\$1799**

The 6' wide PWC float has an extra 6" space on each side. More walk around room than the 5'.

Our SLXs are Foam Filled and Virtually Indestructible 8 Year Warranty

EVO 6' WIDE JET SKI or SMALL BOAT FLOAT



Five or Six Foot Wide: What's The Difference?

You should think about how you'll use the floats. The five foot is popular in marinas with 10' to 12' deep slots. Two 4'10" SLXs will fit; two 6' won't. The benefit of the 6' is additional walk around room. It might be a benefit to walk around the float for service or installing a cover. If you moor in shallow water where you might just jump off into the water, you may never need the extra walk around space.



4'10" wide
(SLX-5)



6' wide
(SLX-6 or EVO-6)

FOR MORE INFORMATION ON ANY OF THESE PRODUCTS SEE WAVEARMOR.COM

FIXED FRAME PONTOON/DOCK LADDERS

1" square aluminum tube with satin finish anodized frame. Large, wide steps.



3 Step
Shown

3 Step \$120

Extends 36" below the deck.

Ideal for shallow water.

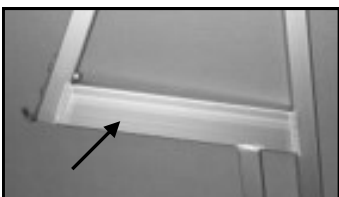
4 Step \$140

Extends 46" below the deck.

5 Step \$165

Extends 56" below the deck

Large 16" wide x 5½" deep steps. *Easy on bare feet.*
Reinforced top for strength, 400 lb. capacity.



Reinforced top frame
supports all swimmers.



Ladder goes out at an
angle. Easier to climb.



Mounts w/ LAKs
Ladder Attachment Kits
standard with new ladders.

Optional (extra) attachment kits for Dock/Pontoon Ladders

Ladder Attachment Kit \$10.50



Backer Plates
included in kit

Heavy Duty Ladder Kit \$24.95

For commercial use or when LAKs won't work.



Galvanized steel

Heavy Duty Straight Dock Ladders, Welded Aluminum Frame



4 step
shown

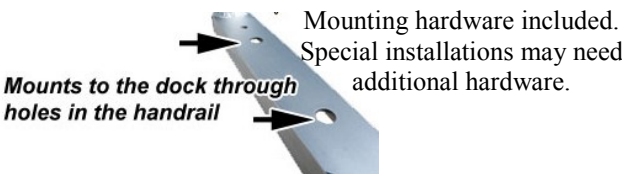
4 step 51"
5 step 63"

4 Step \$209

Extends 51" below the dock.

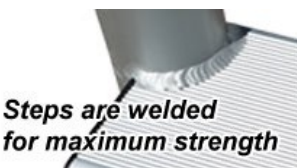
5 Step \$229

Extends 63" below the dock.



Mounts to the dock through
holes in the handrail

Mounting hardware included.
Special installations may need
additional hardware.



Steps are welded
for maximum strength

Welded steps on the
Straight Dock and
Flip-Up dock ladders.



Rated to
500 lb.
capacity

Ladder goes straight down.

2" round welded dock ladders. Large handrails help
swimmers to pull themselves from the water.
4" deep x 19" wide embossed non-skid steps.

Folding & Telescoping Stainless Steel 4 Step Ladder \$295

1½" round tube frame, folds out of the way on pontoons. Four large telescoping steps, extends deep into the water (48"), and steps are 13½" wide. This is the same ladder used on new pontoon boats. Use on your pontoon or on your dock.



48"
Securely
holds ladder
when
folded up.



5 year
warranty

Steps are welded stainless
steel covered with plastic
to be safe on bare feet

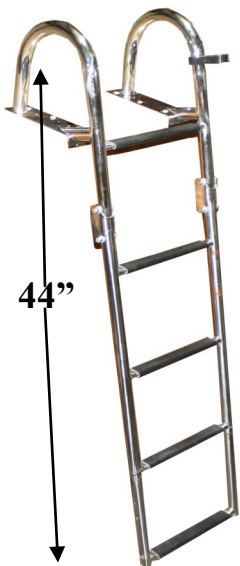


Steps are 13 1/2" wide
Easy on bare feet



Folding & Telescoping Stainless Steel 5 Step Ladder \$219

1¼" round tube frame. Folds to 10" deep (out of the way on pontoons). Five telescoping steps, extends deep into the water (44"), and steps are 12" wide.



44"



Heavy Duty permanent mount.
Install almost anywhere.



Rated to
400 lb.
capacity.

This ladder is standard equipment on several brands of new pontoon boats.
Use it to replace old damaged aluminum ladders or on a dock or swim
float where you want a strong ladder that folds out of the water.

DOCK BUMPERS & PIER PROTECTION

Colored Torpedo Dock Bumpers \$24.50 each



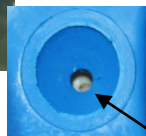
Black White Blue



B-Torpedo

Dress up your dock and protect your boat with colored post bumpers. Colored PVC plastic air filled. Ours won't *melt* like foam bumpers or become brittle and crack like ordinary (*non-air filled*) bumpers. Bumpers have a *bladder* (like a football). The air inside cushions your boat from the dock. Instead of just two layers of vinyl, two inches of air inside will help protect your boat.

3 Year Warranty.



Air filled bladder.
More cushion to
protect your boat.

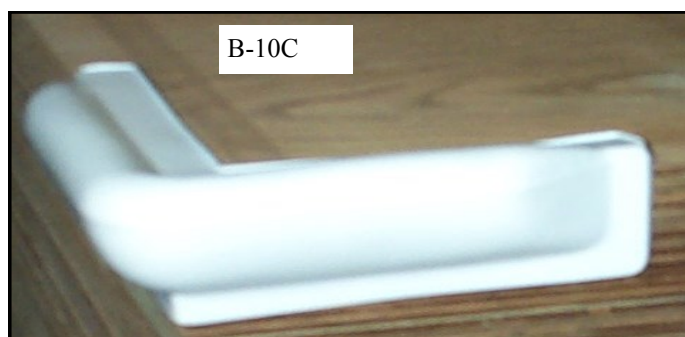
Heavy Duty Dock Bumper 30" \$29.95



Available in WHITE ONLY B-30S

High impact poly resin bumper. Fits over 2" pier pipe. Use these Heavy Duty (plastic) bumpers where boats may frequently come in contact with the dock. Hard plastic protects but won't damage your boat or rub rail. Lasts for years. **5 year warranty.**

10" Corner Bumpers \$23.95



B-10C

10" on each side. Corner bumpers attach over sharp edges on wood or aluminum dock. Inexpensive protection for your boats. Can also be used on Pontoon Boats to protect the deck. **WHITE only.**



Dock Bumper Wheel \$44

12" round x 6.5" tall. Fits over 2" pipe. Air filled for maximum protection for your boat. Rolls easily and floats.



For pontoon guides, use a pier pipe 10'-12' on the outside of the dock. Put the wheel over the pipe. The dock wheel guides your pontoon into the dock.

Floating Kayak Launch \$799 *includes mounting hardware

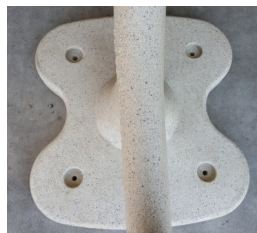


Optional assist bar \$199

Optional grab handle (qty 2) \$199

Mounting Kit
Included with
Kayak Launch

Getting in and out of a kayak sometimes keeps kayak enthusiasts off the water. Here's the solution. 48" wide x 60" long. Weights 90 lbs. Mounts with hardware (included) against stationary or floating dock. The kayak sits on a platform for easy loading. Optional launch and grab bars help launch and dock.



Beach Mount



Bolt to other brands of dock. Flat top surface sits on the top of the dock. Vertical piece supports the side.

Universal Use Kayak Racks \$389

This is the plastic Kayak Rack that's so popular on Wave Armor dock except with mountings to fit on other brands of dock or to use free standing on a beach (Please Specify).