

THE HAFNERS OF ALEXANDER COUNTY, ILLINOIS

By Greg Mathis



2 Gallon Salt glazed storage jar impressed "2" capacity stamping with a bold maker's stamping "C. HAFNER & SON." Alexander County, Illinois. cc: 1870

Casper Hafner, born in Germany in 1808, manufactured ware at Highland, Madison County, Illinois, in 1850, and at Santa Fe, Alexander County, Illinois, 1860–1870. In 1870, Casper continued this operation with his sons, John and Joseph Hafner at Santa Fe, Alexander County, Illinois, employing 3 men in 1870-1880. Both, Santa Fe and Thebes share a common precinct boundary, and both are considered within the Cape Girardeau Great Pottery Manufacturing Region, located directly across the Mississippi River, due East of Commerce, Missouri.

HISTORICAL BACKGROUND:

Sparhawk Landing was the original name for a riverboat landing in Thebes, Illinois, established by the Sparhawk family in the early 1800s. This landing was a key point for riverboat traffic in the area before Thebes was officially established. Thebes is the modern-day location that corresponds to the historical landing site.

Thebes was established as a town in 1835 and platted in March, and became the county seat of Alexander County from 1846 until 1859. On December 6, 1899, Thebes was incorporated as a village. Like the city of Cairo, also in Alexander County, Thebes is named after the Egyptian city of the same name. This part of southern Illinois is known as Little Egypt.

Of historical interest, Abraham Lincoln practiced law in Thebes and legend holds that Dred Scott, a slave whose freedom suit reached the Supreme Court, may have been imprisoned in the local courthouse jail for a time while his case was heard. Scott had claimed freedom after being held in a free state but, setting aside decades of precedent, but the US Supreme Court held that African Americans had no rights under the constitution, and slaves had no standing to sue for freedom.

As the Mississippi River at Thebes is more than four feet deep, the town became a busy steamboat port. Union troops passed through Thebes on their way to attack the South during the American Civil War.

Thebes is a village in “Thebes Precinct,” Alexander County, Illinois, United States, and is part of the Cape Girardeau–Jackson, MO-IL Metropolitan Statistical Area. In 1860 the County Seat was moved to Cairo, at the confluence of the Ohio and Mississippi rivers.

Ship Oceana
 Higgins Rotterdam
 9th June 1845

17	C. Haflner		37		
18	Caroline	his wife	120		female
19	J. Adam		6		male
20	Joseph		56	11	
21	J. Schöfer		45		female
22	Kunigunde		19		male
23	Anthon				

Casper Hafner with wife Caroline and their two young sons John and Joseph were aboard ship *Oceana* from Germany to New Orleans, Louisiana, June 9, 1845.

Passengerlist-Continued.						
NAMES	Age		SEX	OCCUPATION	The country to which they are bound	The country to which they are bound
	Years	Months				
1. J. Muller	40		male	Merchant	Prussia	
2. J. Muller	30		female			
3. J. Muller	20		male			
4. J. Muller	10		female			
5. J. Muller	10		female			
6. J. Muller	10		female			
7. J. Muller	10		female			
8. J. Muller	10		female			
9. J. Muller	10		female			
10. J. Muller	10		female			
11. J. Muller	10		female			
12. J. Muller	10		female			
13. J. Muller	10		female			
14. J. Muller	10		female			
15. J. Muller	10		female			
16. J. Muller	10		female			
17. J. Muller	10		female			
18. J. Muller	10		female			
19. J. Muller	10		female			
20. J. Muller	10		female			
21. J. Muller	10		female			
22. J. Muller	10		female			
23. J. Muller	10		female			
24. J. Muller	10		female			
25. J. Muller	10		female			
26. J. Muller	10		female			
27. J. Muller	10		female			
28. J. Muller	10		female			
29. J. Muller	10		female			
30. J. Muller	10		female			
31. J. Muller	10		female			
32. J. Muller	10		female			
33. J. Muller	10		female			
34. J. Muller	10		female			
35. J. Muller	10		female			
36. J. Muller	10		female			
37. J. Muller	10		female			
38. J. Muller	10		female			
39. J. Muller	10		female			
40. J. Muller	10		female			
41. J. Muller	10		female			
42. J. Muller	10		female			
43. J. Muller	10		female			
44. J. Muller	10		female			
45. J. Muller	10		female			
46. J. Muller	10		female			
47. J. Muller	10		female			
48. J. Muller	10		female			
49. J. Muller	10		female			
50. J. Muller	10		female			
51. J. Muller	10		female			
52. J. Muller	10		female			
53. J. Muller	10		female			
54. J. Muller	10		female			
55. J. Muller	10		female			
56. J. Muller	10		female			
57. J. Muller	10		female			
58. J. Muller	10		female			
59. J. Muller	10		female			
60. J. Muller	10		female			
61. J. Muller	10		female			
62. J. Muller	10		female			
63. J. Muller	10		female			
64. J. Muller	10		female			
65. J. Muller	10		female			
66. J. Muller	10		female			
67. J. Muller	10		female			
68. J. Muller	10		female			
69. J. Muller	10		female			
70. J. Muller	10		female			
71. J. Muller	10		female			
72. J. Muller	10		female			
73. J. Muller	10		female			
74. J. Muller	10		female			
75. J. Muller	10		female			
76. J. Muller	10		female			
77. J. Muller	10		female			
78. J. Muller	10		female			
79. J. Muller	10		female			
80. J. Muller	10		female			
81. J. Muller	10		female			
82. J. Muller	10		female			
83. J. Muller	10		female			
84. J. Muller	10		female			
85. J. Muller	10		female			
86. J. Muller	10		female			
87. J. Muller	10		female			
88. J. Muller	10		female			
89. J. Muller	10		female			
90. J. Muller	10		female			
91. J. Muller	10		female			
92. J. Muller	10		female			
93. J. Muller	10		female			
94. J. Muller	10		female			
95. J. Muller	10		female			
96. J. Muller	10		female			
97. J. Muller	10		female			
98. J. Muller	10		female			
99. J. Muller	10		female			
100. J. Muller	10		female			

Passenger List.

757

SCHEDULE I.—Free Inhabitants in Highland **in the County of** Madison **State** Ill.
of Illinois **enumerated by me, on the** 15th **day of** September **1850.** Wm W. Cam **Ass't Marshal** 585

1	2	3	DESCRIPTION.			7	8	9	10	11	12	13
			Age.	Sex.	Wh. or Col.							
The Name of every Person whose usual place of abode on the first day of June, 1850, was in this family.												
Profession, Occupation, or Trade of each Male Person over 15 years of age.												
Value of Real Estate owned.												
Place of Birth. Naming the State, Territory, or Country.												
Whether deaf and dumb, blind, insane, idiotic, pauper, or convict.												

1940	Casper Hafner	42	m		Potter	40	Germany					39
	Caroline	34	f				"					40
	Adam	12	m				"					41
	Joseph	6	m				"					42

Schedule I. Highland, Madison County, Illinois September 15, 1850.

Casper Hafner, 42, Potter
 Caroline Hafner 34 yrs, wife
 (John) Adam, 12 yrs, son,
 Joseph, 6 yrs, son,

In the 1850 Madison County, Federal Population Census Returns from U.S. Census Bureau, Casper Hafner is listed a potter in Highland, Illinois, accompanied by wife and two young sons John and Joseph.

Page No. 73

SCHEDULE 1.—Free Inhabitants in in the County of Alexander State
of Illinois enumerated by me, on the Sixth day of July 1860. John Hodges Jr. Ass't Marshal.
Post Office Santa Fe

Dwelling-houses— the numbered in the order of valuation.	Families numbered in the order of valuation.	The name of every person whose usual place of abode on the first day of June, 1860, was in this family.	DESCRIPTION.			Profession, Occupation, or Trade of each person, male and female, over 15 years of age.	VALUE OF ESTATE OWNED.		Place of Birth, Naming the State, Territory, or Country.	Married within the year.	Attended School within the year.	Persons over 20 yrs of age who cannot read & write.	Whether deaf and dumb, blind, insane, idiotic, pauper, or convict.
			Age.	Sex.	White, black, or mulatto.		Value of Real Estate.	Value of Personal Estate.					
1	2	3	4	5	6	7	8	9	10	11	12	13	14
1	4183	4183	Frederick Press	39	M	1	Potter			Germany			
2			Elizabeth "	38	F	1	House Keeper	3000	5000	"			
3			Maryann "	13	F					Illinois	1		
4			William "	11	M					"	1		
5			Luther "	7	M					"	1		
6			Marion "	4	M					"			
7			Elizabeth "	2	F					"			
8	424	424	Mrs. Schuch	38	M		Potter	100		"			
9			Mrs. Schuch	32	F		House Keeper			"			
10			Elizabeth "	14	F					"	1		
11			Jasper "	10	M					"	1		
12			Sarah "	7	F					"	1		
13			John "	5	M					"			
14			John Holden	36	M		Potter	200		"			
15			Joseph Buzard	20	M		"			"			
16	435	435	Casper Hafner	52	M	1	"			Germany			
17			Caroline "	43	F	1	House Keeper			"			
18			John A. "	21	M	1	Laborer			"			
19			Joseph "	16	M	1	"			"			
20			Jacob "	10	M					Illinois	1		
21			William "	2	M					"			

In the 1860 Santa Fe, Alexander County, Illinois, Federal Population Census Returns from U.S. Census Bureau, Casper Hafner, 52, is listed a "Potter," accompanied by wife Caroline, 43, and sons John, 21, laborer; Joseph, 16; and Jacob 10. Certainly, all did many chores at the pottery,

SCHEDULE 1.—Inhabitants in <u>Santa Fe Precinct</u> , in the County of <u>Alexander</u> , State of <u>Illinois</u> , enumerated by me on the <u>12</u> day of <u>July</u> , 1870. 112 Post Office: <u>Santa Fe</u> <u>John Linga</u>, Ass't Marshal.																			
1	2	3	4	5	6	7	8	9	10	11	12	13	14	15	16	17	18	19	20
Dwelling house occupied by the family		The name of every person whose place of abode on the first day of June, 1870, was in this family		Description		Profession, Occupation, or Trade of each person, male or female.	Value of Real Estate owned		Place of Birth, naming State or Territory of U. S.; or the Country, if of foreign birth.	Parentage		If born within the year, state month (Jan., Feb., &c.)	If married, state the date and month (Jan., Feb., &c.)	Attended school within the year	Can read	Can write	Whether deaf and dumb, blind, insane, or idiotic.	CONSTITUTIONAL RELATIONS	
1	2	3	4	5	6		Value of Real Estate	Value of Personal Estate		Father of foreign birth	Mother of foreign birth								
1		Brown, Harry	11	M	10				Illinois										
2		Brown, Percy	5	M	10				"										
3		Hett, John	18	M	10				"										
4		East, Frank	14	M	10	Laborer ✓			Missouri										
5		Carnegie, A.	12	M	10				"										
6		Denton, Wm	16	M	10				"										
7	1939	Marquand, Jas.	28	M	10	Potter ✓	1100	500	New York										1
8		Marquand, M.	23	F	10				Illinois										
9		Wray, Elizabeth	17	F	10				Hanover	✓	✓								
10		Sickman, Wm	21	M	10	Laborer ✓			Illinois										
11		Sickman, J.	17	M	10	" ✓			"	✓	✓								
12		Wray, Henry	14	M	10				"	✓	✓								
13		Wray, John	16	M	10				"	✓	✓								
14	160.50	Lillio, John	30	M	10	Potter ✓			Ohio										1
15		Lillio, M.	25	F	10				Missouri										
16		Lillio, J. H.	2	M	10				Illinois										
17		Hall, H. H.	32	M	10	Potter ✓			Missouri										1
18	11.51	Heffner, Casper	62	M	10	" ✓			Baden	✓	✓								1
19		Heffner, Caroline	53	F	10				"	✓	✓								
20		Heffner, J. A.	32	M	10	" ✓			"	✓	✓								1
21		Heffner, Joe	26	M	10	" ✓			"	✓	✓								1
22		Heffner, Jacob	20	M	10				Illinois	✓	✓								
23		Heffner, Phillip	12	M	10				"	✓	✓								

In the 1870 Alexander County, Illinois, Federal Population Census Returns from U.S. Census Bureau, Casper Hafner, 62, is listed a potter in Santa Fe, Illinois, accompanied by wife Caroline, 53; and sons John, 32, potter; Joseph, 26, potter; Jacob 20; and Phillip, 12. Again Jacob does not appear as a "potter," but obviously did many laborer chores at the pottery,



Bold lettered "C. HAFNER & SON" impressed stamping, applied on known vessel and shard attributed to Santa Fe, Alexander County, Illinois. cc: 1870.

D.

Page No. 12

Supervisor's Dist. No. 8

Enumeration Dist. No. 18

NOTE A.—The Census Year begins June 1, 1880, and ends May 31, 1881.

NOTE B.—All persons will be included in the Enumeration who were living on the 1st day of June, 1880. No one will. Children BORN SINCE June 1, 1880, will be OMITTED. Masters or Families who have DIED SINCE June 1, 1880, will be INCLUDED.

NOTE C.—Questions Nos. 10, 11, 12 and 13 are not to be asked in respect to persons under 10 years of age.

SCHEDULE I.—Inhabitants in Township fifteen, in the County of Alexander, State of Illinois, enumerated by me on the 21st day of June, 1880.

Henry Planet

No. in Family	Name	Age	Sex	Color	Profession, Occupation, or Trade	Place of Birth	Place of Birth of Father	Place of Birth of Mother	Place of Birth of Grandfather	Place of Birth of Grandmother	Place of Birth of Great-grandfather	Place of Birth of Great-grandmother
1	Joseph W. 26	26	M	W	Potter	Illinois	Illinois	Illinois	Illinois	Illinois	Illinois	Illinois
2	Anna W. 25	25	F	W	Keeping house	Illinois	Illinois	Illinois	Illinois	Illinois	Illinois	Illinois
3	George W. 7	7	M	W		Illinois	Illinois	Illinois	Illinois	Illinois	Illinois	Illinois
4	Caroline W. 4	4	F	W		Illinois	Illinois	Illinois	Illinois	Illinois	Illinois	Illinois
5	Phil A. 22	22	M	W	Potter	Illinois	Illinois	Illinois	Illinois	Illinois	Illinois	Illinois
6	Lawrence W. 23	23	M	W	Farmer	Illinois	Illinois	Illinois	Illinois	Illinois	Illinois	Illinois
7	Stephen W. 21	21	M	W	Farmer	Illinois	Illinois	Illinois	Illinois	Illinois	Illinois	Illinois
8	Charles W. 17	17	M	W	Farmer	Illinois	Illinois	Illinois	Illinois	Illinois	Illinois	Illinois
9	Barth W. 15	15	M	W	Farmer	Illinois	Illinois	Illinois	Illinois	Illinois	Illinois	Illinois
10	Charles W. 14	14	M	W	Farmer	Illinois	Illinois	Illinois	Illinois	Illinois	Illinois	Illinois
11	Anna W. 13	13	F	W	Keeping house	Illinois	Illinois	Illinois	Illinois	Illinois	Illinois	Illinois
12	John W. 12	12	M	W	Farmer	Illinois	Illinois	Illinois	Illinois	Illinois	Illinois	Illinois
13	John W. 11	11	M	W	Farmer	Illinois	Illinois	Illinois	Illinois	Illinois	Illinois	Illinois
14	John W. 10	10	M	W	Farmer	Illinois	Illinois	Illinois	Illinois	Illinois	Illinois	Illinois
15	John W. 9	9	M	W	Farmer	Illinois	Illinois	Illinois	Illinois	Illinois	Illinois	Illinois
16	John W. 8	8	M	W	Farmer	Illinois	Illinois	Illinois	Illinois	Illinois	Illinois	Illinois
17	John W. 7	7	M	W	Farmer	Illinois	Illinois	Illinois	Illinois	Illinois	Illinois	Illinois
18	John W. 6	6	M	W	Farmer	Illinois	Illinois	Illinois	Illinois	Illinois	Illinois	Illinois
19	John W. 5	5	M	W	Farmer	Illinois	Illinois	Illinois	Illinois	Illinois	Illinois	Illinois
20	John W. 4	4	M	W	Farmer	Illinois	Illinois	Illinois	Illinois	Illinois	Illinois	Illinois
21	John W. 3	3	M	W	Farmer	Illinois	Illinois	Illinois	Illinois	Illinois	Illinois	Illinois
22	John W. 2	2	M	W	Farmer	Illinois	Illinois	Illinois	Illinois	Illinois	Illinois	Illinois
23	John W. 1	1	M	W	Farmer	Illinois	Illinois	Illinois	Illinois	Illinois	Illinois	Illinois
24	John W. 0	0	M	W	Farmer	Illinois	Illinois	Illinois	Illinois	Illinois	Illinois	Illinois

In the 1880 Alexander County, Illinois, Federal Population Census Returns from U.S. Census Bureau, Township 15 (scratched), Thebes/Santa Fe, Illinois, Joseph, 26, Potter, accompanied by wife Anna, 25, Keeping House, son George, 7, daughter Caroline 4, and brother Phil A., 22, Potter. Family members had many chores at the pottery. Importantly, The Illinois Genealogical Society notes the Thebes "Township fifteen" encompasses the Santa Fe Precinct.

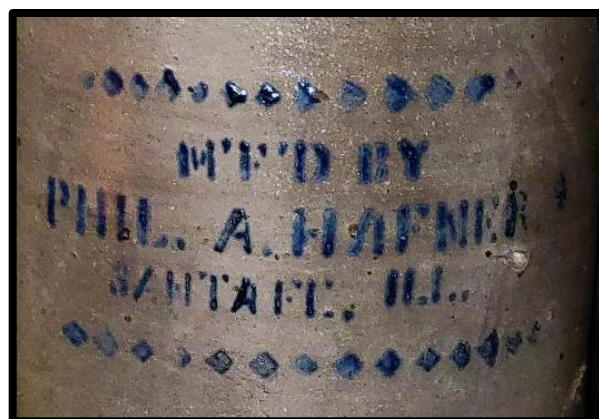
Page No. 12
Supervisor's Dist. No. 8
Enumeration Dist. No. 5th

Note A.—The Census Year begins June 1, 1879, and ends May 31, 1880.
Note B.—All persons will be included in the Enumeration who were living on the 1st day of June, 1880. No others will. Children BORN SINCE June 1, 1880, will be OMITTED. Members of Families who have DIED SINCE June 1, 1880, will be INCLUDED.
Note C.—Questions Nos. 13, 14, 22 and 23 are not to be asked in respect to persons under 10 years of age.

SCHEDULE 1.—Inhabitants in Township fifteen, in the County of Alexander, State of Illinois
enumerated by me on the 21st day of June, 1880.
Henry Planer Enumerator.

In Cities		The Name of each Person whose place of abode, on the day of June, 1880, was in this family		Personal Description		Relationship of each person to the head of the family—whether wife, son, daughter, servant, teacher, or other		Civil Condition		Occupation		Health		Education		Native	
1	2	3	4	5	6	7	8	9	10	11	12	13	14	15	16	17	18
592		Hafner Joseph	W.M.	26				1			Potter						
		Anna	W.F.	23			Wife	1			Keeping house						
		George F.	W.M.	7			Son										
		Caroline	W.F.	4			Daughter										
		Hafner Ph. A.	W.M.	22			Brother				Potter						

The 1880 Alexander County, Illinois, Federal Population Census Returns from U.S. Census Bureau, lists Joseph Hafner, 26, ‘Potter,’ wife Anna 23, son George 7, and daughter Caroline, 4; and accompanied by Phil A. Hafner, 22, ‘Brother’ and ‘Potter.’ Joseph and Phil A. Hafner are listed as potters in ‘Township fifteen,’ Illinois. Having the census entry ‘Township 15’ scratched out possibly indicates a needed correction to read ‘Santa Fe.’ Thebes and Santa Fe are eight miles apart and The Illinois Genealogical Society notes the Thebes Township encompasses the Santa Fe precinct.



Cobalt stencils applied to vessels manufactured by Phil A. Hafner prove they were produced at ‘Santa Fe, Ill.’

Page No. 1
 Supervisor's Dist. No. 8
 Enumeration Dist. No. 5th Division

The following classes of Manufacturing Establishments will be reported on a SPECIAL MANUFACTURING SCHEDULE, and not on this Schedule, viz:

(1.) Boot and Shoe Factories.	(5.) Lumber Mills and Saw Mills.	(8.) Coal Mines.
(2.) Cheese and Butter Factories.	(6.) Brick Yards and Tile Works.	(9.) Agricultural Implement Works.
(3.) Flouring and Grist Mills.	(7.) Paper Mills.	(10.) Quarries.
(4.) Salt Works.		

SCHEDULE 3.—MANUFACTURES.—Products of Industry in Township fifteen, in the County of Alexander, State of Illinois, during the twelve months beginning June 1, 1879, and ending May 31, 1880, as enumerated by me.

Post Office: Thebes Henry Haupt Enumerator.

Name of Corporation, Company, or individual producing to the value of \$100 annually.	Name of Business, Manufacture, or Product.	Capital (real and personal) invested in the business.	Average number of hands employed at any one time during the year.			Wages and Hours of Labor.	Months in Operation.	Value of Machinery, Mill Race, and Fuel, exclusive of the value of the building.	Value of Stock, exclusive of the value of the building.	Power used in Manufacture.	
			Male above 15 years.	Female above 15 years.	Children and youth.					If water power is used.	If steam power is used.
Lantz Daniel Blacksmith		\$1000	✓	✓	✓	10 10	✓	6	✓	✓	✓
Edwards James H. Pottery		200	✓	✓	✓	10 10	✓	12	✓	✓	✓
Hafner Joseph Pottery		400	✓	✓	✓	10 10	✓	5	✓	✓	✓
Hafner Philip Pottery		600	✓	✓	✓	10 10	✓	12	✓	✓	✓

Page No. 1
 Supervisor's Dist. No. 8
 Enumeration Dist. No. 5th Division

The following classes of Manufacturing Establishments will be reported on a SPECIAL MANUFACTURING SCHEDULE, and not on this Schedule, viz:

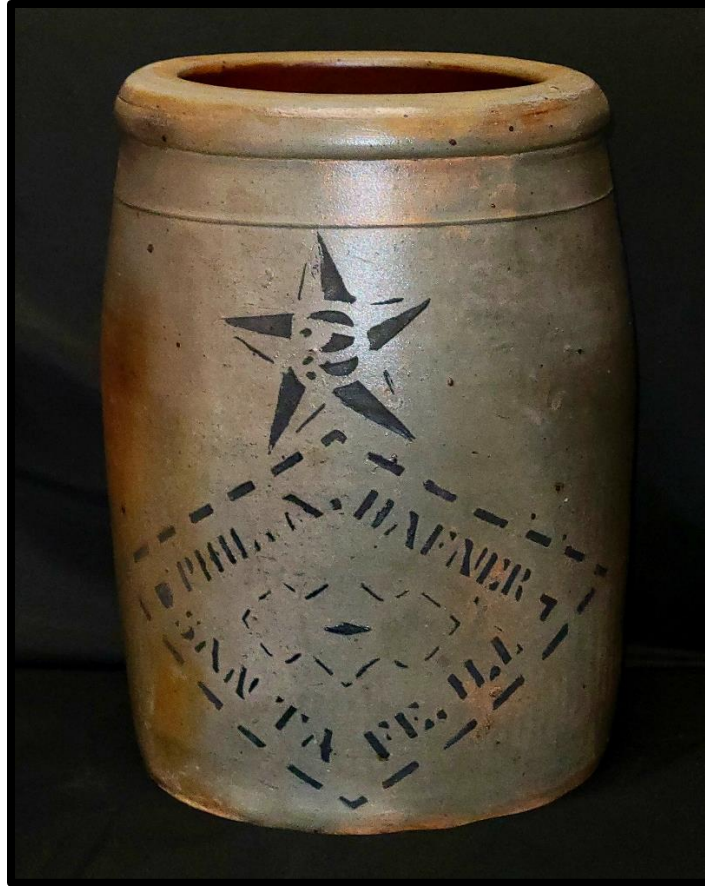
(1.) Boot and Shoe Factories.	(5.) Lumber Mills and Saw Mills.	(8.) Coal Mines.
(2.) Cheese and Butter Factories.	(6.) Brick Yards and Tile Works.	(9.) Agricultural Implement Works.
(3.) Flouring and Grist Mills.	(7.) Paper Mills.	(10.) Quarries.
(4.) Salt Works.		

SCHEDULE 3.—MANUFACTURES.—Products of Industry in Township fifteen, in the County of Alexander, State of Illinois, during the twelve months beginning June 1, 1879, and ending May 31, 1880, as enumerated by me.

Post Office: Thebes Henry Haupt Enumerator.

1	2	3	4	5	6	7	8	9	10	11	12	13	14	15	16	17	18	19
Lantz Daniel Blacksmith		\$1000	✓	✓	✓	✓	10	10			✓	6	6				\$300	800
Edwards James H. Pottery		200	✓	✓	✓	✓	10	10			✓	12					\$400	950
Hafner Joseph Pottery		400	✓	✓	✓	✓	10	10	✓	✓	✓	5	7				75	950
Hafner Philip Pottery		600	✓	✓	✓	✓	10	10	✓	✓	✓	12					300	3500

Page 6 of the 1880 Schedule 3 – MANUFACTURES Alexander County, Illinois, Federal Population Census Returns from U.S. Census Bureau, 1850-1880, (image 1 of 12; citing NARA microfilm publication T1133 by the Washington, D.C.: National Archives and Records Administration, details Joseph Hafner and Phil Hafner both actually potting in Thebes “Township 15” at Thebes, Alexander County, Illinois, in 1880. The Illinois Genealogical Society notes the Thebes Township encompasses the Santa Fe Precinct. Joseph Hafner operated the Hafner pottery until 1880, and brother Phil A. Hafner continued the operation until the pottery ceased production in 1883. Philip pursued other personal endeavors at St. Louis, Missouri, and Commerce, Missouri.



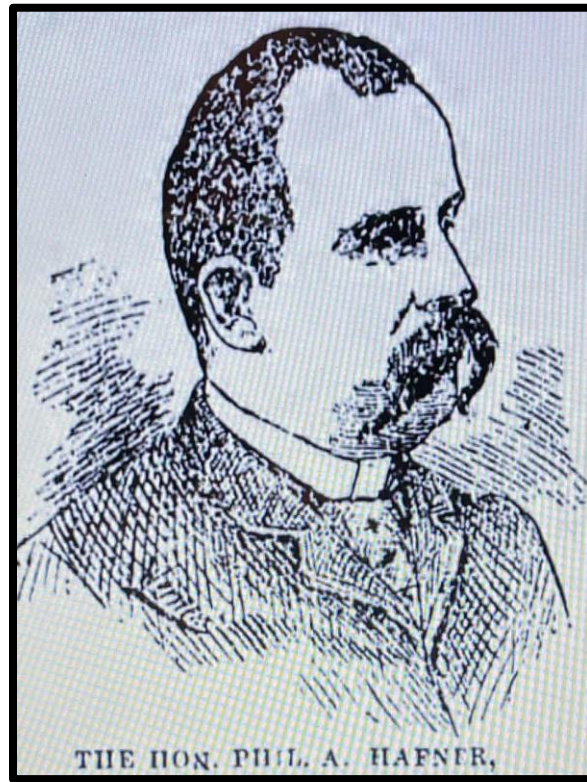
2 Gallon Salt glazed storage jar bearing an ornate cobalt stenciled star “2” capacity, above a diamond bordered maker’s stamping
“PHIL A. HAFNER / SANTA FE. ILL” cc: 1880

Directly across the river from Commerce, Missouri, was the early Illinois strategically located boat landing called Commerce Crossing, which later became Santa Fe, Alexander County, Illinois. Santa Fe never became platted as an official town. Early settlers and landowners of the property are connected to the Fay family members, including Rice Keating Fay and his relative Elizabeth Fay. The Santa Fe location became named Fayville, Alexander County, Illinois.

Phil A. Hafner was born in Illinois in 1858, and operated his pottery 1880-1884 in Santa Fe. In 1880, the operation employed 8 men. (*The Foundation for Historical Research of Illinois Potteries*, Vol 1, No.3, page 8; Eva Dodge Mounce, 1989.)



Sample of "PHIL A. HAFNER / SANTA FE. ILL" vessels. cc: 1880.



Published in *The Scott County Missouri News Boy*, in Benton, Missouri, on January 23, 1892, is "In conclusion, we wish to introduce to your notice the greatest newspaper man on earth: the honorable Phil A. Hafner, Editor of the Scout County News Boy, but styled the *Whisky Bloat* by his Reverence William Ballentine, President of the late Scott County Local Option Conglomeration.

He was born at Ramsey Illinois, June 12, 1858 and is supposed to be the son of his father and mother. In 1860 his parents moved to Santa Fe, Illinois, and the notorious Phil followed them. He attended the storehouse, warehouse and private resident schools right along with County Clerk McPeeters and sometimes had to move his books from one shanty to another during one session of school.

He is no hand at a plow handle, but has hauled fodder in a one horse cart, dug clay, made pots, drummed for a wholesale liquor house, lead orchestra, played the fiddle for dances, danced on public stages, taking part in public parades, conducted a street car, but never discovered his calling until he landed in Scott County and undertook

to run a newspaper on the go as - you please plan. He has been admitted to all kinds of society, shaken hands with x-President, Grover Cleveland, bump glasses with Missouri's governor, and has been associated with a former people of the country; but he experienced the happiest moments of his life, not so long ago, when you had the honor to play seven-up and drink, at the Arcade saloon, Cape Girardeau, until 2:00 AM, with the president of the Scott County Local Option Brigade - although the president defeated him in the gaming, and held his own at the drinking.

Just think of it! Imagine the scene! Draw the picture – the Editor of the *Whiskey Bloat* and the president of the Scott County Local Option *Menagerie* playing a Seven-Up at the Arcade saloon.”

One of the veteran editors of Southeast Missouri is Phil A. Hafner, editor of the *Scott County Kicker* at Benton, Missouri. This is a Socialist paper published by the Workers Printing Company. Mr. Hafner was at one time in his life a conductor on the street rail- way in St. Louis, and while engaged in this business became impressed with the idea that he would like to own and edit a newspaper. The idea grew upon him and he went so far as to select a name for his proposed news-

A Socialist newspaper, the Benton *Scott County Kicker*, was edited by Phil A. Hafner and published by the Workers Printing Company. Prior to the *Kicker*, Hafner was editor of the Benton Newsboy, and according to the History of Southeast Missouri, he chose this name in honor of the newsboys who were “always bright and always much in evidence on the street cars.”

Increasingly interested in the rights of farmers and limiting corporate land ownership, Hafner sold the *Democratic Newsboy* and started the *Kicker* as an independent publication which focused on social issues, embracing many of the reform and progressive movements that were taking hold in the early 20th century. Hafner began printing the *Scott County Kicker* in November 1901. The *Kicker* claimed to be “the ONLY paper in Scott County published by, and in the interest of, those who do Useful Labor.” Indeed, Hafner proclaimed that “*The Scott County Kicker* is the People's Paper. It is Not Muzzled. Wears No Man's Collar.”

The *Kicker* was published every Saturday, and, initially, Hafner printed a four-page sheet, but he quickly expanded to six pages due to the large subscribing audience in

Scott County which was eager for and accustomed to local news. The paper had a long run and did not cease publication until 1917, when Hafner had to “announce the suspension of the *Kicker* for an indefinite time ”because he was “a very sick man.” Hafner passed away of heart disease at this home in Benton on Thursday, February 15, 1917, and the search for a new editor turned up nothing, so the final issue on April 7, 1917, announced the suspension of publication.

Page No. 12
 Supervisor's Dist. No. 8
 Enumeration Dist. No. 11

Note A.—The Census Year begins June 1, 1879, and ends May 31, 1880.
 Note B.—All persons will be included in the Enumeration who were living on the 1st day of June, 1880. No others will. Children BORN SINCE June 1, 1880, will be OMITTED. Members of Families who have DIED SINCE June 1, 1880, will be INCLUDED.
 Note C.—Questions Nos. 13, 14, 22 and 23 are not to be asked in respect to persons under 10 years of age.

SCHEDULE I.—Inhabitants in Township fifteen, in the County of Alexander, State of Illinois
 enumerated by me on the 21st day of June, 1880.

Henry Planet
 Enumerator.

In Cities		Personal Description	Relationship of each person to the head of this family—whether wife, son, daughter, servant, boarder, or other.	Civil Condition	Occupation	Health	Education	Native
Name	Number							
	3							
	3							
	2	Hafner, Joseph W. 36	1	Potter				Baden
		Anna W. 25	1	Keeping house				Baden
		George F. W. 7						Baden
		J. Caroline W. 4						Baden
		Hafner Ph. A. W. 22		Potter				Baden

Schedule I. Alexander County, Illinois, June 21, 1880.

Joseph Hafner, 36 yrs, Potter

Phil A. Hafner, 22 yrs, Potter

Thebes is located in Township 15 South, Range 3 West of the Third Principal Meridian,
 in Alexander County, in Illinois.



Casper Hafner,

BIRTH January 8, 1808, Langenbrücken, Landkreis Karlsruhe,
Baden-Württemberg, Germany.

DEATH 18 May 1880 (aged 72.)

BURIAL Saint Lawrence Cemetery,
New Hamburg, Scott County, Missouri.



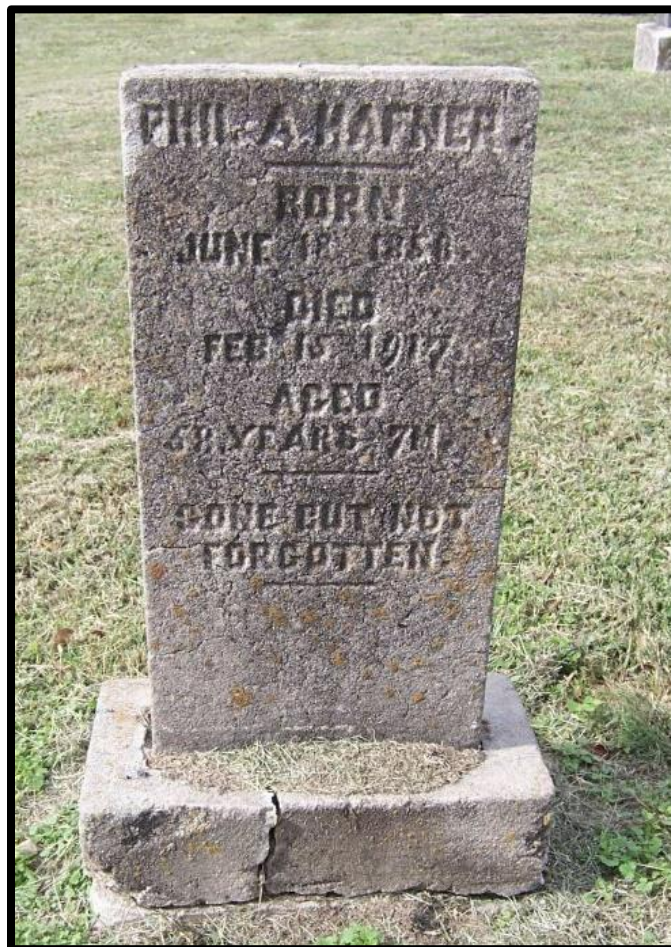
John Adam Hafner,
 BIRTH 4 Sep 1838, Mingolsheim, Landkreis Karlsruhe, Baden-
 Württemberg, Germany. DEATH 12 Mar 1916 (aged 77), Pittsburgh,
 Allegheny County, Pennsylvania. BURIAL South Side Cemetery,
 Pittsburgh, Allegheny County, Pennsylvania.



Joseph Hafner, BIRTH 1844, DEATH 23 Aug 1883 (aged 38–39)
 Highland, Madison County, Illinois,
 BURIAL Saint Joseph Cemetery, Highland, Madison County, Illinois.



Jacob Hafner, BIRTH July 29, 1850, DEATH April 2, 1902.(age 52)
BURIAL Calvary Cemetery and Mausoleum, St. Louis, Missouri.



Phil A. Hafner, BIRTH 18 Jun 1858, Ramsey, Fayette County, Illinois.
DEATH 15 Feb 1917 (aged 58), Benton, Scott County, Missouri.
BURIAL Oakdale Cemetery, Commerce, Scott County, Missouri.

Listed in Official Federal Census at Thebes “Township 15” that includes the Santa Fe district are: Casper & Joseph Hafner 1870-1880.

Listed at Santa Fe are: Theodore Sickman pottery 1850; Bungare ____ potter 1860; Frederick Free potter 1860; John Hadler potter 1860; Charles Koch pottery 1860-1880; Schull__potter 1860; John Dillon potter 1870; Casper Hafner pottery 1870-1880; J. A. Hafner potter 1870; G. S. Fleischman pottery 1870; H. H. Hall potter 1870; Joseph. Merriman pottery 1870-1875; Charles Koch potter 1880. (*The Foundation for Historical Research of Illinois Potteries*, Vol 1, No.3, page 8; Eva Dodge Mounce, 1989.and, *The U.S. Census Manufacturing Schedules for Alexander County, Illinois.*).



Koepp excavated shards from property dump located a few miles West of Commerce, Missouri, and are presumed manufactured by local potters within the Cape Girardeau greater regional district. These dump artifacts likely include ware segments produced by the Hafners, Charles Koch and numerous other potters of Santa Fe, and Thebes, Alexander County, Illinois.



Sample A of Koepp excavated dump assemblage artifacts.



Sample B of Koepp excavated dump assemblage artifacts.



Sample C of Koepp excavated dump assemblage rare Santa Fe artifacts.

SUMMATION

Casper Hafner with wife Caroline and their two young sons John and Joseph, immigrated on the ship *Oceana* from Germany to New Orleans, Louisiana, June 9, 1845. They traveled to Highland, Illinois, area around 1845.

THE HAFNER POTTERS - WHEN AND WHERE: Casper is listed as “Potter,” age 42 yrs. in the 1850 Highland, Madison County, Illinois, State Census. The 1860 Santa Fe, Alexander County, Illinois, Census only lists Casper, 52 yrs, as “Potter.” The 1870 Santa Fe, Alexander County, Illinois, Census lists Casper, 62 yrs, “Potter,” and sons John, 31 yrs, “Potter,” Joseph, 26 yrs, “Potter.”

Lastly, the 1880 Thebes, Township 15, Alexander County, Illinois State Census (Township 15 includes the Santa Fe district) lists just two Hafners being involved in pottery manufacturing: Joseph Hafner, 36 yrs, “Potter,” and his brother Phil A. Hafner, 32 yrs. “Potter.”

Phil A. Hafner ended the Santa Fe, Illinois, pottery operation in 1883, to pursue other personal endeavors. Casper’s son Jacob was never listed as “Potter,” but was evidentially involved in many of the pottery operation necessary tasks.

Phil being born in 1858, is erroneously listed in the 1860 census being born at Santa Fe, Illinois. This census entry is inaccurate, as Phil A Hafner has always stated Ramsey, Illinois, his birthplace. Other archival records state Phil A. Hafner birth being at Commerce, Missouri, and are likewise inaccurate. Evidently, occasionally the census takers would just assume things. Thus, all these later accounts of his life that indicate he was born in Santa Fe are inaccurate. The official article published in *The Scott County Missouri News Boy*, in Benton, Missouri, on January 23, 1892, states where Phil talks about growing up and being born in Ramsey, directly stated from Phil himself.

As 1850 records place Casper Hafner and his family in Highland, Illinois, located forty-eight miles South of Ramsey, Illinois, there were significant ties to Highland, Illinois. One example being that Casper's son Joseph Hafner, moved back to Highland, Illinois, later in life and was buried there.

Eva Mounce, the renown pottery, manufacturers, researcher, my mentor, had access to rare Illinois potter manufacturing census records and detailed State data, kept in Springfield, Illinois. She has always been highly regarded and accurate. In Eva's writing "*Checklist of Illinois Potters and Potteries*" about potters and potteries in Alexander County, Eva should have listed on page 8 that Casper Hafner's and Phil A. Hafner's pottery operation at Santa Fe, Illinois, simply because Thebes, "Township 15," includes the Santa Fe district.

Again, "reliable" resources trail Casper Hafner and his wife and sons from Germany to New Orleans, Louisiana, up to and through St. Louis, Missouri, to Ramsey, Illinois, to Highland, Illinois, then to Santa Fe, Alexander County, Illinois.

While Thebes and Santa Fe are eight miles apart, the Alexander County, Illinois, Federal Population Census Returns from U.S. Census Bureau, on June 21, 1880, locates the Hafner pottery operation at Thebes "Township 15," again, which includes the Santa Fe Precinct.

Albeit, Casper Hafner and sons always operated in Alexander County Illinois at Santa Fe.

(Special reference and acknowledgment to *The Foundation for Historical Research of Illinois Potteries*, Vol 1, No.3, page 8; Eva Dodge Mounce, 1989., *The U.S. Census Manufacturing Schedules for Alexander County, Illinois.*, the exhaustive archival research and the excavation assemblage artifacts of Mr. Kyle Koepp, and photography by Dr. Max Eakin.)