

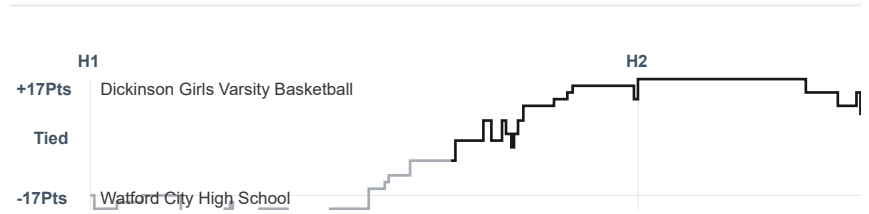
Box Score Report

DHS vs Watford City - Jan 4, 2022 - W 60-50

Period Stats

Team	1	2	Final
DHS	39	21	60
WCHS	22	28	50

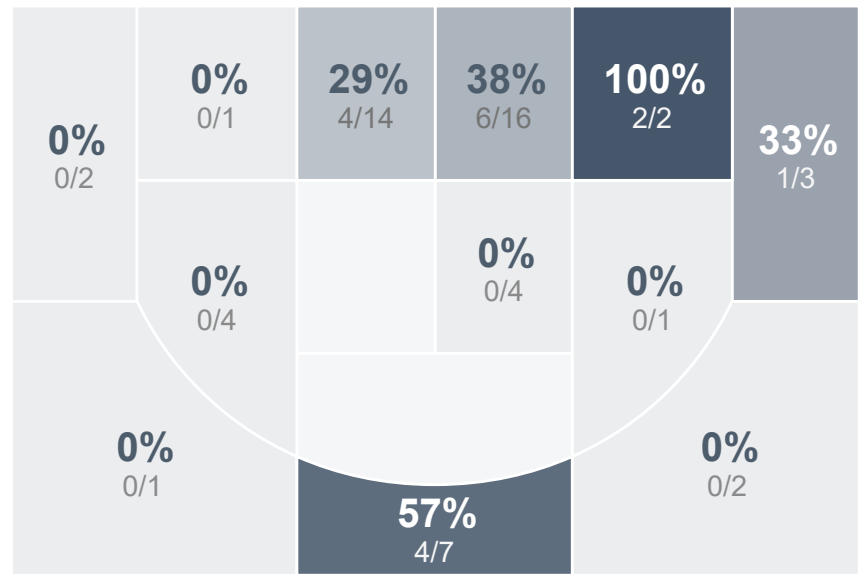
Run Graph



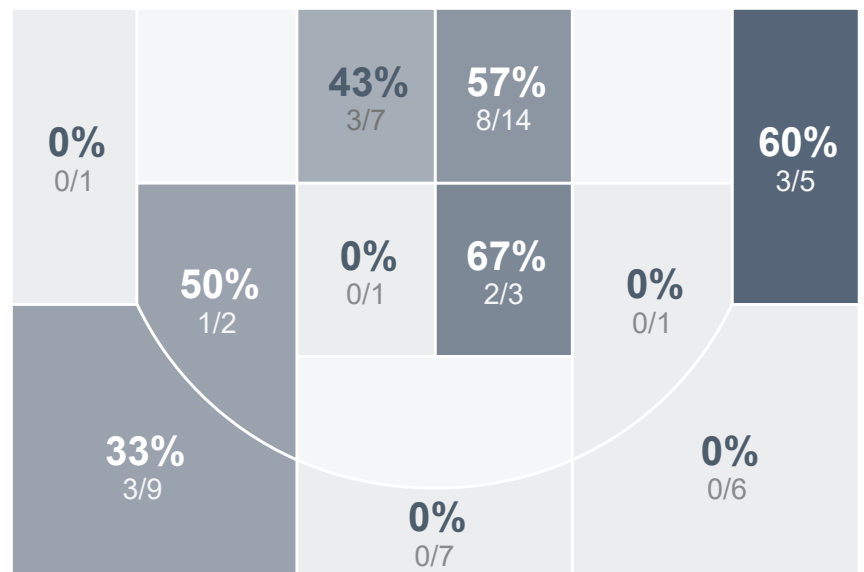
Team Stats

	DHS	WCHS
Field Goal %	29.8%	35.7%
Effective Field Goal %	34.2%	41.1%
2FG Made/Attempted	12/42	14/28
2FG%	28.6%	50.0%
3FG Made/Attempted	5/15	6/28
3FG%	33.3%	21.4%
FT Made/Attempted	21/31	4/7
Free Throw Percentage	67.7%	57.1%
Points Per Possession	0.74	0.65
Transition Points	13	9
Points Off Turnovers	24	10
Second Chance Points	11	4
Points in the Paint	20	26
Offensive Rebounds	12	12
Defense Rebounds	23	31
Assists	10	11
Deflections	20	8
Steals	15	13
Blocks	1	1
Turnovers	21	30
Personal Fouls	12	24
Charges Taken	0	0

Dickinson Girls Varsity Basketball



Watford City High School



Dickinson Girls Varsity Basketball's Player Stats

Name	Pts	FG	3FG	FT	+/-	MINS	OREB	DREB	AST	DEFL	STL	BLK	TO	FOUL	CHG
🟡 Unknown Athlete	0	0/0	0/0	0/0	-	-	0	0	0	0	0	0	1	0	0
#2 Emily Ash	20	7/18	3/7	3/3	+ 12	37	1	5	3	9	5	0	3	2	0
#3 Staci Kempenich	2	0/0	0/0	2/2	+ 4	13	0	0	0	2	0	0	1	0	0
#4 Reese Hauck	14	3/16	2/5	6/8	+ 5	30	2	7	1	2	2	0	1	3	0
#5 Baylee Berg	3	1/3	0/0	1/2	+ 10	22	3	1	1	2	3	0	1	0	0
#10 Maeva Kuehl	2	0/1	0/0	2/2	+ 12	9	0	0	0	0	1	0	2	1	0
#11 Taya Hopfauf	11	4/8	0/1	3/8	+ 10	33	1	4	3	3	2	0	1	1	0
#12 Abbey Dutke	2	1/1	0/0	0/0	- 3	4	1	0	0	0	0	0	2	0	0
#20 Caton Percy	5	1/8	0/2	3/4	+ 2	23	0	4	1	2	0	1	4	0	0
#22 Kinzie Hoff	0	0/0	0/0	0/0	- 3	6	2	0	1	0	0	0	2	1	0
#23 Sadie Stevenson	1	0/2	0/0	1/2	+ 1	13	0	2	0	0	2	0	3	4	0

Watford City High School's Player Stats

Name	Pts	FG	3FG	FT	+/-	MINS	OREB	DREB	AST	DEFL	STL	BLK	TO	FOUL	CHG
#2 Maycee Garmann	0	0/0	0/0	0/0	- 3	17	0	0	0	0	0	0	2	2	0
#3 Lexi Moberg	2	1/4	0/3	0/0	- 10	20	1	1	0	0	0	0	2	1	0
#5 Jessica Mogen	21	9/15	1/2	2/3	- 8	34	3	3	5	1	2	1	8	4	0
#11 Gracen Breitbach	0	0/5	0/5	0/0	- 11	34	1	6	1	2	2	0	11	2	0
#12 Bailey Mattson	16	5/15	5/13	1/2	- 5	27	2	3	0	1	4	0	1	4	0
#14 Akira Hogue	0	0/1	0/0	0/0	- 5	15	1	3	0	2	0	0	1	4	0
#22 Jordyn Peterson	2	1/3	0/1	0/0	- 3	11	0	0	0	0	0	0	2	3	0
#40 Madison Spacher	9	4/13	0/4	1/2	- 5	33	3	10	5	2	5	0	3	4	0