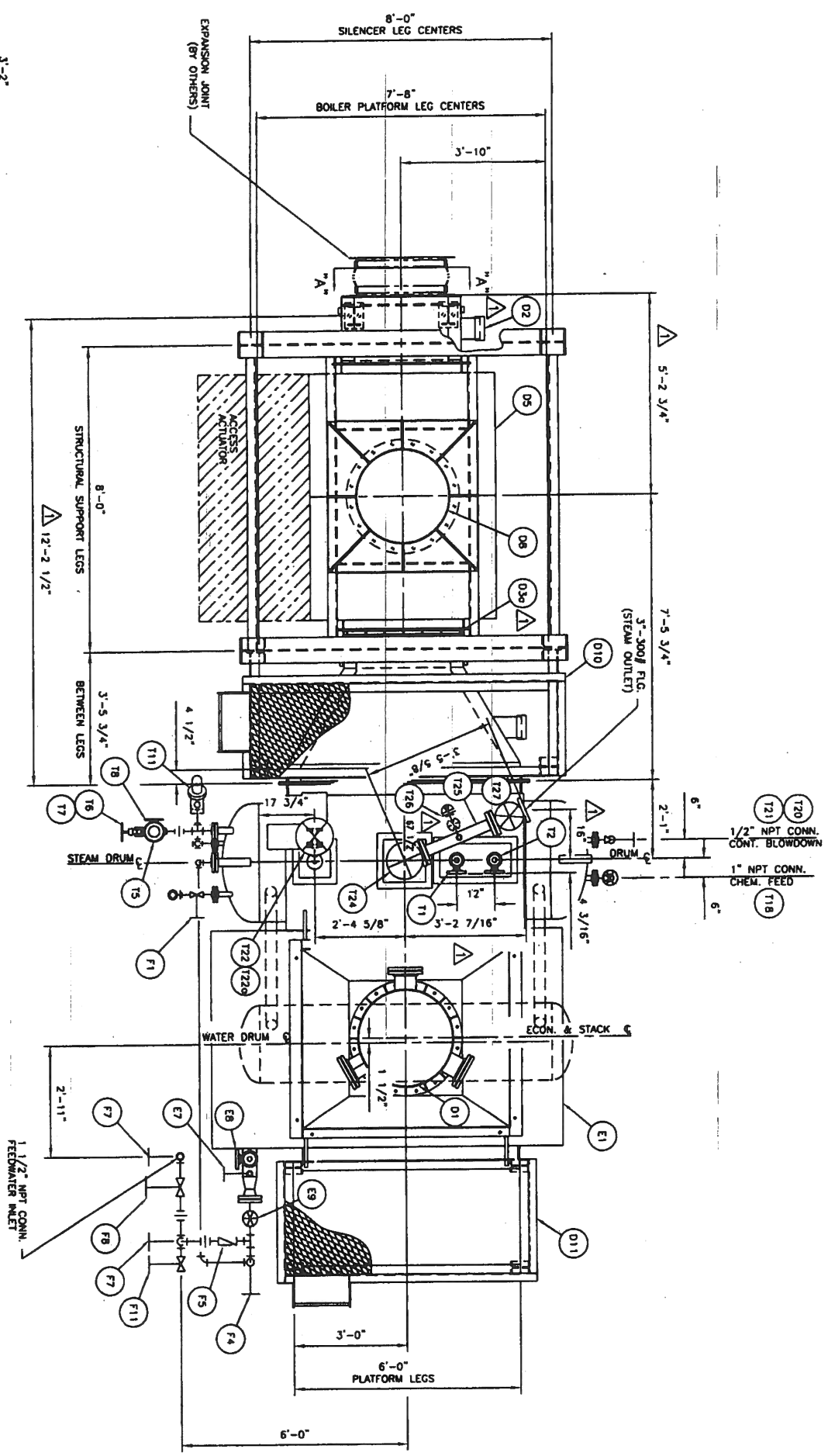
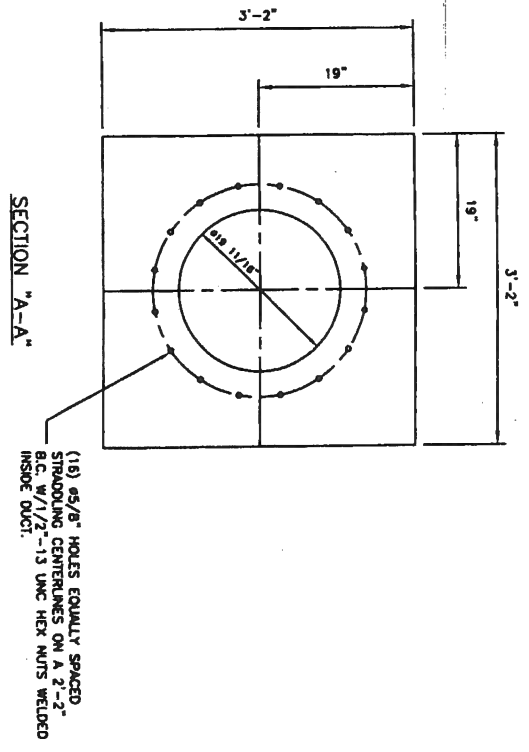


A	7 Jan. 00	CHANGE POSITION OF GAS FUEL CONT. UNIT.	Y. Tsunoda	I. Yamashita	25. Oct. 99	PROJECT NAME STRUCTURE OF GPB15D GAS TURBINE GENERATOR SET	SHEET 1 OF 2
REV	DATE	DESCRIPTION	BY	CHECKED BY	DESIGNED BY	TITLE	SHEET
COPY	TO			H. Kawamitsu	25. Oct. 99	GAS TURBINE DIVISION	1 OF 2

DO NOT SCALE USE DIMENSIONS ONLY		1" INDICATES NOT FURNISHED BY N.I.O.				
DO NOT USE FOR CONSTRUCTION UNLESS APPROVED BELOW						
THIS DRAWING IS THE PROPERTY OF NATIONAL DYNAMICS COMPANY AND IS LOANED ON CONDITION THAT IT SHALL NOT BE COPIED OR REPRODUCED IN WHOLE OR IN PART OR DISCLOSED TO ANY THIRD PARTY OR USED FOR ANY PURPOSE WITHOUT THE WRITTEN CONSENT OF NATIONAL DYNAMICS COMPANY. IT IS THE RESPONSIBILITY OF THE USER TO OBTAIN THE NECESSARY PERMITS AND APPROVALS FOR THE APPLICATION OF THIS DRAWING. NATIONAL DYNAMICS COMPANY ACCEPTS NO RESPONSIBILITY AS TO THE INSTALLATION OR OPERATION OF SUCH EQUIPMENT OR MATERIALS.						
REV.	DATE	DESCRIPTION	CH #	BY	CHK	APP
Δ	7/12/00	INITIAL SUBMITTAL TO CUSTOMER			OH	JWP SMT
Δ	11/6/00	REVISED PER AS BUILT			EOO-416	JPG



PLAN VIEW



- NOTES:
1. REFER TO ERI B/A-3392/33 FOR A DESCRIPTION OF COMPONENTS.
 2. FEEDWATER & STEAM PIPING TO BE SUPPORTED IN FIELD BY OTHERS.
 3. SEE TRIM LIST FOR PAINT.
 4. SOME BOLTING OF STRUCTURAL ASSEMBLIES WILL BE REQUIRED IN FIELD BY OTHERS.



NATIONAL DYNAMICS
GENERAL ARRANGEMENT
SERIES: SI-1414

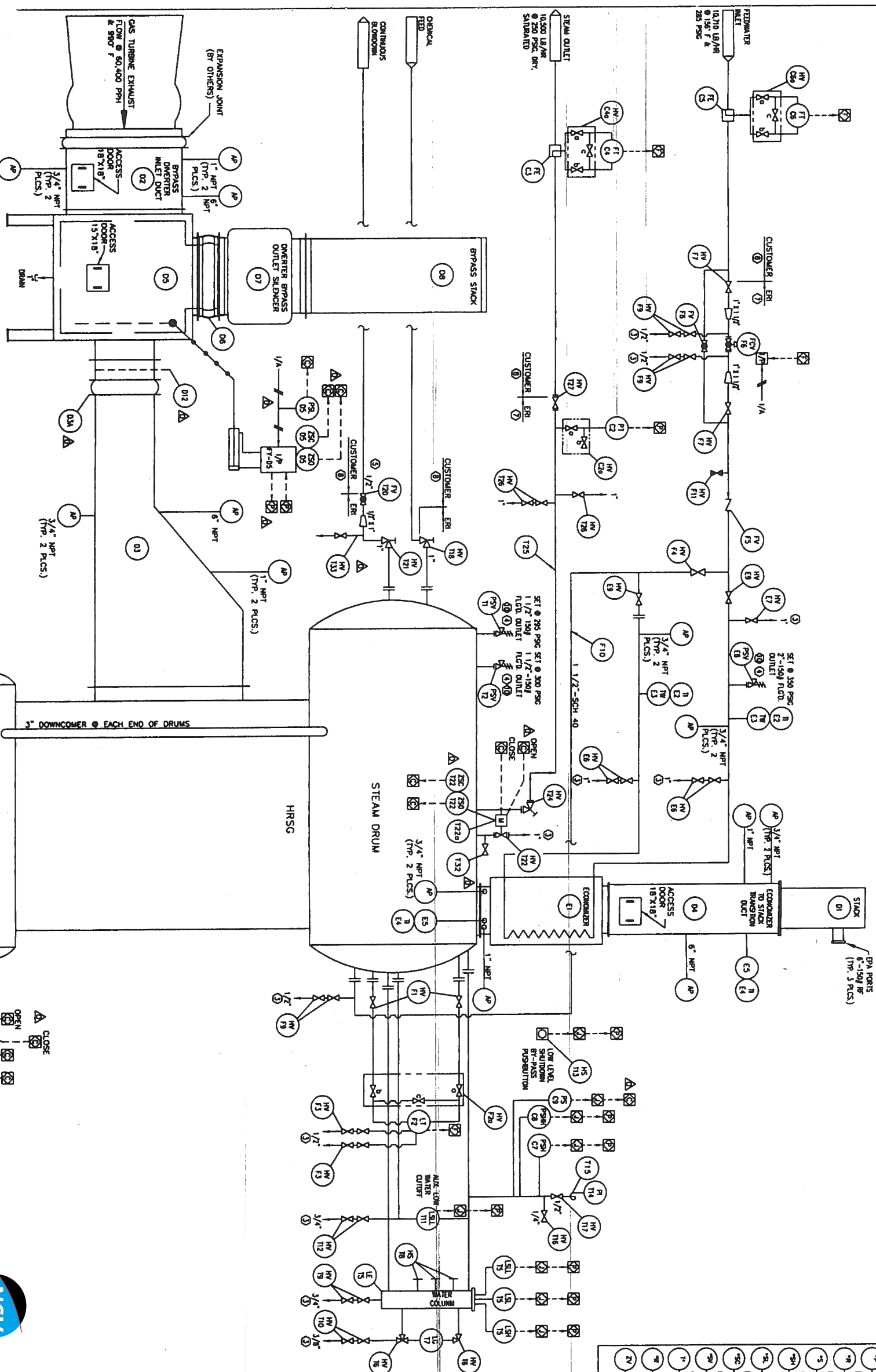
SCALE: 1/2"=1'-0"	SHEET NO.: 1 OF 3
JOB NO.: TIR-3392	DRAWING NO.: 722-2893
QTY: ONE (1) UNIT REQ'D.	AS SHOWN

BOILER CONTROL SYSTEM (BY PREFERRED INSTR.)	CUSTOMER SUPPLIED PIPING	PNEUMATIC SIGNAL ELECTRIC OR ELECTRONIC SIGNAL UNIQUE PROCESS SIGNAL	* FIRST LETTER DESIGNATION	ANGLE VALVE	DRY VALVE	PRESSURE REGULATION (EXTERNAL, 1/2")	SILENCER	EXPANSION JOINT	POLYAL SPURION
RECOVERED FROM (BY PREFERRED INSTR.)	RECOVERED FROM (BY PREFERRED INSTR.)	RECOVERED FROM (BY PREFERRED INSTR.)	A ANALYSIS B BURST C CONDUCTIVITY F FLOW (MANUAL) H HAND I CURRENT L LEVEL	REMOVING PILOT TUBE BALL VALVE CHECK VALVE CONTROL VALVE	DRY VALVE CLOSE VALVE NON-ACTION VALVE OFFICE PLATE REDUCER	PRESSURE REGULATION (EXTERNAL, 1/2") PRESSURE REGULATION (SELF CONTAINED) SAFETY RELIEF VALVE ILLUMINATOR	SILENCER BLIND-DOWN VALVE POSITIVE DISAPPOINTMENT TYPE FLOW TRANSMITTER TRAP INSTRUMENT AIR	EXPANSION JOINT DESPERATELY LOCK OPEN VALVE LOCK CLOSE VALVE LOCK OPEN VALVE LOCK CLOSE VALVE LOCK OPEN VALVE LOCK CLOSE VALVE	POLYAL SPURION ANALOG

1A	1B	1C	1D	1E	1F	1G	1H	1I	1J	1K	1L	1M	1N	1O	1P	1Q	1R	1S	1T	1U	1V	1W	1X	1Y	1Z	1AA	1AB	1AC	1AD	1AE	1AF	1AG	1AH	1AI	1AJ	1AK	1AL	1AM	1AN	1AO	1AP	1AQ	1AR	1AS	1AT	1AU	1AV	1AW	1AX	1AY	1AZ	1BA	1BB	1BC	1BD	1BE	1BF	1BG	1BH	1BI	1BJ	1BK	1BL	1BM	1BN	1BO	1BP	1BQ	1BR	1BS	1BT	1BU	1BV	1BW	1BX	1BY	1BZ	1CA	1CB	1CC	1CD	1CE	1CF	1CG	1CH	1CI	1CJ	1CK	1CL	1CM	1CN	1CO	1CP	1CQ	1CR	1CS	1CT	1CU	1CV	1CW	1CX	1CY	1CZ	1DA	1DB	1DC	1DD	1DE	1DF	1DG	1DH	1DI	1DJ	1DK	1DL	1DM	1DN	1DO	1DP	1DQ	1DR	1DS	1DT	1DU	1DV	1DW	1DX	1DY	1DZ	1EA	1EB	1EC	1ED	1EE	1EF	1EG	1EH	1EI	1EJ	1EK	1EL	1EM	1EN	1EO	1EP	1EQ	1ER	1ES	1ET	1EU	1EV	1EW	1EX	1EY	1EZ	1FA	1FB	1FC	1FD	1FE	1FF	1FG	1FH	1FI	1FJ	1FK	1FL	1FM	1FN	1FO	1FP	1FQ	1FR	1FS	1FT	1FU	1FV	1FW	1FX	1FY	1FZ	1GA	1GB	1GC	1GD	1GE	1GF	1GG	1GH	1GI	1GJ	1GK	1GL	1GM	1GN	1GO	1GP	1GQ	1GR	1GS	1GT	1GU	1GV	1GW	1GX	1GY	1GZ	1HA	1HB	1HC	1HD	1HE	1HF	1HG	1HH	1HI	1HJ	1HK	1HL	1HM	1HN	1HO	1HP	1HQ	1HR	1HS	1HT	1HU	1HV	1HW	1HX	1HY	1HZ	1IA	1IB	1IC	1ID	1IE	1IF	1IG	1IH	1II	1IJ	1IK	1IL	1IM	1IN	1IO	1IP	1IQ	1IR	1IS	1IT	1IU	1IV	1IW	1IX	1IY	1IZ	1JA	1JB	1JC	1JD	1JE	1JF	1JG	1JH	1JI	1JJ	1JK	1JL	1JM	1JN	1JO	1JP	1JQ	1JR	1JS	1JT	1JU	1JV	1JW	1JX	1JY	1JZ	1KA	1KB	1KC	1KD	1KE	1KF	1KG	1KH	1KI	1KJ	1KK	1KL	1KM	1KN	1KO	1KP	1KQ	1KR	1KS	1KT	1KU	1KV	1KW	1KX	1KY	1KZ	1LA	1LB	1LC	1LD	1LE	1LF	1LG	1LH	1LI	1LJ	1LK	1LM	1LN	1LO	1LP	1LQ	1LR	1LS	1LT	1LU	1LV	1LW	1LX	1LY	1LZ	1MA	1MB	1MC	1MD	1ME	1MF	1MG	1MH	1MI	1MJ	1MK	1ML	1MM	1MN	1MO	1MP	1MQ	1MR	1MS	1MT	1MU	1MV	1MW	1MX	1MY	1MZ	1NA	1NB	1NC	1ND	1NE	1NF	1NG	1NH	1NI	1NJ	1NK	1NL	1NM	1NN	1NO	1NP	1NQ	1NR	1NS	1NT	1NU	1NV	1NW	1NX	1NY	1NZ	1OA	1OB	1OC	1OD	1OE	1OF	1OG	1OH	1OI	1OJ	1OK	1OL	1OM	1ON	1OO	1OP	1OQ	1OR	1OS	1OT	1OU	1OV	1OW	1OX	1OY	1OZ	1PA	1PB	1PC	1PD	1PE	1PF	1PG	1PH	1PI	1PJ	1PK	1PL	1PM	1PN	1PO	1PP	1PQ	1PR	1PS	1PT	1PU	1PV	1PW	1PX	1PY	1PZ	1QA	1QB	1QC	1QD	1QE	1QF	1QG	1QH	1QI	1QJ	1QK	1QL	1QM	1QN	1QO	1QP	1QQ	1QR	1QS	1QT	1QU	1QV	1QW	1QX	1QY	1QZ	1RA	1RB	1RC	1RD	1RE	1RF	1RG	1RH	1RI	1RJ	1RK	1RL	1RM	1RN	1RO	1RP	1RQ	1RR	1RS	1RT	1RU	1RV	1RW	1RX	1RY	1RZ	1SA	1SB	1SC	1SD	1SE	1SF	1SG	1SH	1SI	1SJ	1SK	1SL	1SM	1SN	1SO	1SP	1SQ	1SR	1SS	1ST	1SU	1SV	1SW	1SX	1SY	1SZ	1TA	1TB	1TC	1TD	1TE	1TF	1TG	1TH	1TI	1TJ	1TK	1TL	1TM	1TN	1TO	1TP	1TQ	1TR	1TS	1TT	1TU	1TV	1TW	1TX	1TY	1TZ	1UA	1UB	1UC	1UD	1UE	1UF	1UG	1UH	1UI	1UJ	1UK	1UL	1UM	1UN	1UO	1UP	1UQ	1UR	1US	1UT	1UU	1UV	1UW	1UX	1UY	1UZ	1VA	1VB	1VC	1VD	1VE	1VF	1VG	1VH	1VI	1VJ	1VK	1VL	1VM	1VN	1VO	1VP	1VQ	1VR	1VS	1VT	1VU	1VV	1VW	1VX	1VY	1VZ	1WA	1WB	1WC	1WD	1WE	1WF	1WG	1WH	1WI	1WJ	1WK	1WL	1WM	1WN	1WO	1WP	1WQ	1WR	1WS	1WT	1WU	1WV	1WW	1WX	1WY	1WZ	1XA	1XB	1XC	1XD	1XE	1XF	1XG	1XH	1XI	1XJ	1XK	1XL	1XM	1XN	1XO	1XP	1XQ	1XR	1XS	1XT	1XU	1XV	1XW	1XX	1XY	1XZ	1YA	1YB	1YC	1YD	1YE	1YF	1YG	1YH	1YI	1YJ	1YK	1YL	1YM	1YN	1YO	1YP	1YQ	1YR	1YS	1YT	1YU	1YV	1YW	1YX	1YY	1YZ	1ZA	1ZB	1ZC	1ZD	1ZE	1ZF	1ZG	1ZH	1ZI	1ZJ	1ZK	1ZL	1ZM	1ZN	1ZO	1ZP	1ZQ	1ZR	1ZS	1ZT	1ZU	1ZV	1ZW	1ZX	1ZY	1ZZ
Alarm or Indication	Alarm High	Alarm High Shutdown	Alarm Low	Alarm Low Shutdown	Control Valve	Element	Press or Gauge	Indicator	Indicating Controller	Indicating Transmitter	Panel	Panel Gauge	Pressure Indicator	Recorder, Relucting	Recording Controller	Switch	Safety Element	Switch High	Switch High Shutdown	Switch Low	Switch Low Shutdown	Switch Closed	Switch Open	Safety Valve	Transmitter	Temperature	Voltage	Ball or Probe	Alarm or Control	Position, Final Element	To Control Panel																																																																																																																																																																																																																																																																																																																																																																																																																																																																																																																																																																																																																																																																																													

- NOTES:
- SEE ENERGY RECOVERY INTERNATIONAL (ERI) BILL OF MATERIALS (BOM) FOR A COMPLETE DESCRIPTION OF COMPONENTS.
 - ALL CONNECTIONS ARE WPT OR FLANGED UNLESS OTHERWISE NOTED.
 - PPE TO SAFE, WEAR LOCATIONS.
 - ROUTE TO SAFE LOCATION FOR MAINTENANCE RECOMMENDATIONS.
 - PPE TO BLOWDOWN COLLECTION SYSTEM.
 - LOWER DRAIN BLOWDOWN VALVES SERVE AS LOW POINT BLOWER DRAIN.
 - ERPG SUPPLIED BY ERI, FIELD PIPING AND INSTALLATION BY OTHERS UNLESS OTHERWISE NOTED.
 - ERPG BY OTHERS AND INSTALLED BY OTHERS.
 - ALL FIELD WIRING SHOWN IS BY OTHERS UNLESS OTHERWISE NOTED.
 - WIRING BETWEEN FIELD DEVICES AND ERI BY ERI.
 - PPE SAFETY VALVE DRAINS TO CUSTOMER DRAIN.
 - EQUIPMENT SUPPLIED BY OTHERS.

REV.	DATE	DESCRIPTION	CH	BY	CHKD	APP
1	6/23/00	INITIAL SUBMITAL TO CUSTOMER				
2	8/16/00	INITIAL RELEASE OF DRAWING				



NOTES:

- ① SEE ENERGY RECOVERY INTERNATIONAL (ERI) BILL OF MATERIAL, 8/4-1152/23 FOR A COMPLETE DESCRIPTION OF COMPONENTS.
- ② ALL CONNECTIONS ARE WPT OR FLANGED UNLESS OTHER WISE NOTED.
- ③ PPE TO SAFE, INSIBLE LOCATION.
- ④ ROUTE TO SAFE LOCATION PER MANUFACTURER'S RECOMMENDATION.
- ⑤ PPE TO BLOWDOWN COLLECTION SYSTEM.
- ⑥ LOWER DRUM BLOWOFF VALVES SERVE AS LOW POINT BLOWER DRAIN.
- ⑦ PPEING SUPPLIED BY ERI, FIELD P1-UP AND INSTALLATION BY OTHERS UNLESS OTHERWISE NOTED.
- ⑧ PPEING BY OTHERS AND INSTALLED BY OTHERS.
- ⑨ ALL FIELD WIRING SHOWN IS BY OTHERS UNLESS OTHERWISE INDICATED.
- ⑩ WIRING BETWEEN FIELD DEVICES AND ☒ BY ERI.
- ⑪ PPE SAFETY VALVE DRAINS TO CUSTOMER DRAIN.
- ⑫ EQUIPMENT SUPPLIED BY OTHERS.

P1	Pressure Gauge
PI	Indicator
REC	Recover, Reducing
RC	Recording Controller
SW	Switch
SE	Safety Element
SH	Switch High
SHL	Switch High Shutdown
SL	Switch Low
SLD	Switch Low Shutdown
SO	Switch Open
SV	Safety Valve
T	Transmitter
TEMP	Temperature
VAL	Valve
WPT or Probe	Well or Probe
WPT or Complete	Well or Complete
WPT or Control Panel	Well or Control Panel

6