

# PHIFER

EXTERIOR SUN CONTROL  
FABRIC



Quality Wholesale Window Coverings  
Contract • Hospitality • Healthcare • Residential

PH: 866-753-1113 FX: 203-597-8828

email: [customerservice@porterpreston.com](mailto:customerservice@porterpreston.com) [www.porterpreston.com](http://www.porterpreston.com)

SUNTEX® 80/90

WEAVING  
EXCELLENCE  
WITH  
INNOVATION



# SunTex® 80/90

BY PHIFER

| SOLAR OPTICAL PROPERTIES   |    |    |    |    | SHGC/G VALUE<br>g-tot (glass & blind) |        |        |            |      |      |
|--|----|----|----|----|---------------------------------------|--------|--------|------------|------|------|
|  |    |    |    |    | SINGLE                                |        |        | INSULATING |      |      |
| Color  | TS | RS | AS | TV | 1/8 CL                                | 1/4 CL | 1/4 HA | 1/2 CL     | 1 CL | 1 HA |
| <b>SUNTEX® 80 Zero Degree Profile Angle • Fabrics Installed Externally</b> |    |    |    |    |                                       |        |        |            |      |      |
| Brown  | 28 | 4  | 68 | 37 | 0.32                                  | 0.32   | 0.30   | 0.28       | 0.28 | 0.23 |
| Black  | 28 | 4  | 68 | 37 | 0.32                                  | 0.32   | 0.30   | 0.28       | 0.28 | 0.23 |
| Grey   | 28 | 23 | 49 | 36 | 0.30                                  | 0.30   | 0.28   | 0.26       | 0.25 | 0.22 |
| Stucco   | 31 | 38 | 31 | 36 | 0.31                                  | 0.30   | 0.29   | 0.27       | 0.26 | 0.23 |
| Beige  | 32 | 30 | 38 | 39 | 0.33                                  | 0.32   | 0.30   | 0.29       | 0.27 | 0.23 |
| Dark Bronze  | 28 | 5  | 67 | 38 | 0.32                                  | 0.31   | 0.30   | 0.28       | 0.26 | 0.23 |
| <b>SUNTEX® 80 30 Degree Profile Angle • Fabrics Installed Externally</b>   |    |    |    |    |                                       |        |        |            |      |      |
| Brown  | 26 | 4  | 70 | 37 | 0.30                                  | 0.30   | 0.28   | 0.26       | 0.25 | 0.22 |
| Black  | 26 | 4  | 70 | 37 | 0.30                                  | 0.30   | 0.28   | 0.26       | 0.25 | 0.22 |
| Grey   | 26 | 23 | 51 | 36 | 0.29                                  | 0.28   | 0.26   | 0.24       | 0.23 | 0.21 |
| Stucco   | 30 | 38 | 32 | 36 | 0.30                                  | 0.30   | 0.28   | 0.26       | 0.25 | 0.22 |
| Beige  | 31 | 30 | 39 | 39 | 0.32                                  | 0.31   | 0.30   | 0.28       | 0.27 | 0.23 |
| Dark Bronze  | 26 | 5  | 69 | 38 | 0.30                                  | 0.30   | 0.28   | 0.26       | 0.25 | 0.22 |
| <b>SUNTEX® 90 Zero Degree Profile Angle • Fabrics Installed Externally</b> |    |    |    |    |                                       |        |        |            |      |      |
| Brown  | 13 | 5  | 82 | 18 | 0.20                                  | 0.20   | 0.19   | 0.17       | 0.16 | 0.15 |
| Black  | 14 | 4  | 82 | 19 | 0.21                                  | 0.21   | 0.20   | 0.17       | 0.17 | 0.15 |
| Grey   | 14 | 27 | 59 | 18 | 0.18                                  | 0.18   | 0.17   | 0.16       | 0.15 | 0.13 |
| Stucco   | 18 | 44 | 38 | 20 | 0.20                                  | 0.20   | 0.18   | 0.17       | 0.17 | 0.15 |
| Beige  | 17 | 36 | 47 | 20 | 0.20                                  | 0.20   | 0.18   | 0.17       | 0.17 | 0.15 |
| Dark Bronze  | 13 | 5  | 82 | 18 | 0.20                                  | 0.20   | 0.19   | 0.17       | 0.16 | 0.15 |
| <b>SUNTEX® 90 30 Degree Profile Angle • Fabrics Installed Externally</b>   |    |    |    |    |                                       |        |        |            |      |      |
| Brown  | 12 | 5  | 83 | 18 | 0.19                                  | 0.19   | 0.18   | 0.16       | 0.15 | 0.14 |
| Black  | 12 | 4  | 84 | 19 | 0.19                                  | 0.19   | 0.18   | 0.16       | 0.15 | 0.14 |
| Grey   | 13 | 27 | 60 | 18 | 0.17                                  | 0.17   | 0.16   | 0.15       | 0.14 | 0.13 |
| Stucco   | 17 | 44 | 39 | 20 | 0.19                                  | 0.19   | 0.17   | 0.16       | 0.16 | 0.14 |
| Beige  | 16 | 36 | 48 | 20 | 0.19                                  | 0.19   | 0.18   | 0.16       | 0.16 | 0.14 |
| Dark Bronze  | 12 | 5  | 83 | 18 | 0.19                                  | 0.19   | 0.18   | 0.16       | 0.15 | 0.14 |



PROTECTION THAT LIVES ON  
**MICROBAN®**  
 Microban® antimicrobial protection inhibits the growth of stain-causing bacteria, mold and mildew on the shade.



MIF SEAL OF APPROVAL



TS = Solar Transmittance  
 RS = Solar Reflectance  
 AS = Solar Absorptance  
 TV = Visual Transmittance

SHGC = Solar Heat Gain Coefficient

1/8 CL = 1/8" Clear Glass  
 1/4 CL = 1/4" Clear Glass  
 1/4 HA = 1/4" Heat Absorbing Glass  
 1/2 CL = 1/2" Insulating Clear Glass  
 1 CL = 1" Insulating Clear Glass  
 1 HA = 1" Insulating Heat Absorbing Glass

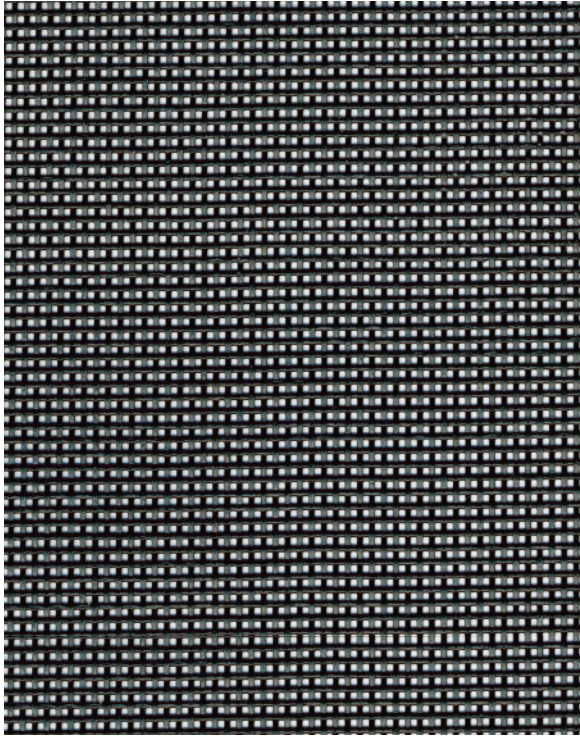
The solar optical properties are used to calculate the solar heat gain coefficient (SHGC). The SHGC represents the percentage of solar heat gain that is transmitted to the interior through the glass and shading system. Dark colors provide maximum glare reduction and visibility.

For additional performance values, test references and technical definitions visit us at [phifer.com](http://phifer.com).

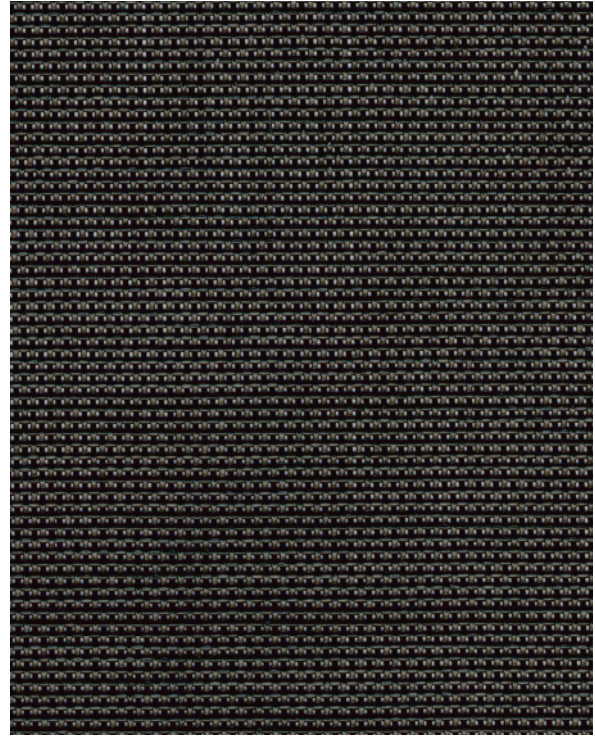
# SUNTEX 80

# SUNTEX 90

**Black**



**Black**

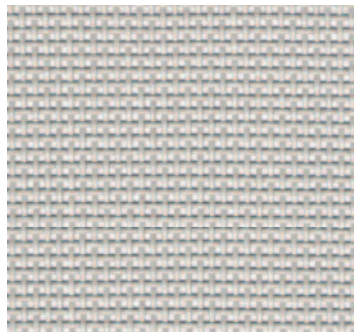


SUNTEX 80 and SUNTEX 90 are also available in the colors shown below.

**Brown**



**Grey**



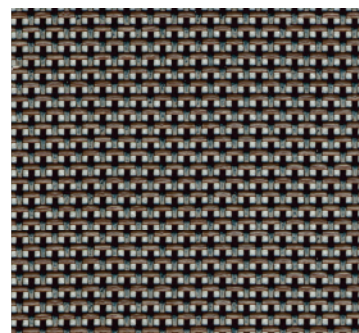
**Beige**



**Stucco**



**Dark Bronze**



\*Colors may vary based on individual computer settings and should only be used for general reference.

# SUNTEX® 80/90 SPECIFICATIONS

SunTex exterior shading fabric is made of strong vinyl-coated polyester. Developed originally for use in outdoor furniture, SunTex is mildew and fade resistant and needs only an occasional cleaning with mild soap and water. Ideal for use as a shading fabric on windows, doors and porches, SunTex is also pet resistant.

|                                       |   |                                      |
|---------------------------------------|---|--------------------------------------|
| <b>80 FIRE CLASSIFICATION</b>         | California Technical Bulletin 117<br>NFPA 101 (Class B Rating)  | IBC Section 803.1.1 (Class B Rating) |
| <b>90 FIRE CLASSIFICATION</b>         | California Technical Bulletin 117<br>NFPA 101 (Class A Rating)  | IBC Section 803.1.1 (Class A Rating) |
| <b>BACTERIA AND FUNGAL RESISTANCE</b> | ASTM E 2180                      ASTM G21<br>Includes Microban antimicrobial additives  |                                      |
| <b>ENVIRONMENTAL CERTIFICATION</b>    | GREENGUARD                      GREENGUARD Gold<br>Certified to these standards for low chemical emissions into indoor air during product usage             |                                      |
| <b>SAFE USE</b>                       | RoHS/Directive 2002/95/EC<br>ANSI/WCMA A 100.1-2007 for lead content<br>US Consumer Product Safety Commission Section 101<br>REACH (EC 1907/2006) compliant |                                      |
| <b>WARRANTY</b>                       | 10-year exterior  |                                      |
| <b>UV PROTECTION</b>                  | Seal of Approval by the Melanoma International Foundation (MIF) for effectiveness in preventing sun damage to the skin or eyes (SunTex 90)                  |                                      |

| SUNTEX®                        | 80   | 90   |
|--------------------------------|--|--|
| <b>WIDTHS</b>                  | 36", 48", 60", 72" and 96"; <i>120" available in Black, Brown, Dark Bronze and Stucco</i><br>91.4 cm, 121.9 cm, 152.4 cm, 182.9 cm and 243.8 cm; <i>304.8 cm available in Black, Brown, Dark Bronze and Stucco</i> | 36", 48", 60", 72" and 96"; <i>120" in all colors except Grey</i><br>91.4 cm, 121.9 cm, 152.4 cm, 182.9 cm and 243.8 cm; <i>304.8 cm in all colors except Grey</i> |
| <b>ROLL LENGTH</b>             | 100 Linear Feet (30.48m);<br>120" (304.8cm) in 90 Linear Feet (27.43m)   | 100 Linear Feet (30.48m);<br>120" (304.8cm) in 90 Linear Feet (27.43m)   |
| <b>COMPOSITION</b>             | 31% Polyester<br>69% Vinyl on Polyester  | 31% Polyester<br>69% Vinyl on Polyester  |
| <b>MESH WEIGHT</b>             | 12.9 oz/yd <sup>2</sup><br>437.38 g/m <sup>2</sup>   | 16.5 oz/yd <sup>2</sup><br>559.44 g/m <sup>2</sup>   |
| <b>FABRIC THICKNESS</b>        | 0.032 in<br>0.8128 mm  | 0.035 in<br>0.889 mm   |
| <b>OPENNESS FACTOR</b>         | Approximately 25%  | Approximately 10%  |
| <b>UV BLOCKAGE</b>             | Approximately 75%  | Approximately 90%  |
| <b>BREAKING STRENGTH (LBS)</b> | 269 Warp, 237 Fill   | 378 Warp, 276 Fill   |
| <b>STIFFNESS (MG)</b>          | 445 Warp, 397 Fill   | 424 Warp, 450 Fill   |



P. O. Box 1700 • Tuscaloosa, Alabama 35403-1700 USA  
 Phone: 205.345.2120 • FAX: 205.391.0799  
 Toll Free USA/Canada: 1.800.221.5497  
 phifer.com • ISO Registered



© SunTex is a registered trademark of PHIFER INCORPORATED.  
 © MICROBAN is a registered trademark of Microban Products Company.  
 ™ UL, the UL logos and the UL mark are trademarks of UL LLC.  
 © PHIFER INCORPORATED V21 3009031

# PHIFER

EXTERIOR SUN CONTROL  
FABRIC



Quality Wholesale Window Coverings  
Contract • Hospitality • Healthcare • Residential

PH: 866-753-1113 FX: 203-597-8828

email: [customerservice@porterpreston.com](mailto:customerservice@porterpreston.com) [www.porterpreston.com](http://www.porterpreston.com)

SUNTEX® 95/97

WEAVING  
EXCELLENCE  
WITH  
INNOVATION



# SunTex® 95/97

BY PHIFER

| SOLAR OPTICAL PROPERTIES |    |    |    |    | SHGC/G VALUE<br>g-tot (glass & blind) |        |        |            |      |      |
|--------------------------|----|----|----|----|---------------------------------------|--------|--------|------------|------|------|
| Color                    | TS | RS | AS | TV | SINGLE                                |        |        | INSULATING |      |      |
|                          |    |    |    |    | 1/8 CL                                | 1/4 CL | 1/4 HA | 1/2 CL     | 1 CL | 1 HA |

**SUNTEX® 95** Zero Degree Profile Angle • Fabrics Installed Externally

|             |    |    |    |    |      |      |      |      |      |      |
|-------------|----|----|----|----|------|------|------|------|------|------|
| Carbon      | 6  | 10 | 84 | 10 | 0.14 | 0.14 | 0.13 | 0.10 | 0.10 | 0.10 |
| Stucco      | 14 | 48 | 38 | 13 | 0.16 | 0.16 | 0.15 | 0.14 | 0.14 | 0.12 |
| White       | 17 | 70 | 13 | 16 | 0.17 | 0.17 | 0.16 | 0.15 | 0.14 | 0.12 |
| White/Grey  | 12 | 54 | 34 | 12 | 0.14 | 0.14 | 0.13 | 0.12 | 0.12 | 0.10 |
| Sand        | 12 | 44 | 44 | 7  | 0.15 | 0.15 | 0.14 | 0.13 | 0.12 | 0.11 |
| Alpaca      | 11 | 39 | 50 | 11 | 0.15 | 0.15 | 0.14 | 0.12 | 0.12 | 0.10 |
| Chestnut    | 11 | 39 | 50 | 9  | 0.15 | 0.15 | 0.14 | 0.12 | 0.12 | 0.11 |
| Mocha       | 8  | 22 | 70 | 9  | 0.14 | 0.14 | 0.14 | 0.11 | 0.11 | 0.10 |
| Dark Bronze | 8  | 5  | 87 | 11 | 0.16 | 0.16 | 0.16 | 0.12 | 0.12 | 0.11 |
| Black       | 7  | 3  | 90 | 10 | 0.16 | 0.16 | 0.15 | 0.12 | 0.12 | 0.11 |

**SUNTEX® 97** Zero Degree Profile Angle • Fabrics Installed Externally

|             |    |    |    |    |      |      |      |      |      |      |
|-------------|----|----|----|----|------|------|------|------|------|------|
| Carbon      | 4  | 11 | 85 | 4  | 0.12 | 0.12 | 0.12 | 0.09 | 0.09 | 0.08 |
| Stucco      | 10 | 50 | 40 | 6  | 0.13 | 0.13 | 0.12 | 0.11 | 0.11 | 0.09 |
| White       | 15 | 76 | 9  | 12 | 0.15 | 0.15 | 0.14 | 0.13 | 0.13 | 0.10 |
| White/Grey  | 9  | 51 | 40 | 7  | 0.12 | 0.12 | 0.11 | 0.10 | 0.10 | 0.09 |
| Sand        | 9  | 46 | 45 | 5  | 0.13 | 0.13 | 0.12 | 0.10 | 0.10 | 0.09 |
| Alpaca      | 9  | 44 | 47 | 4  | 0.13 | 0.13 | 0.12 | 0.11 | 0.10 | 0.09 |
| Chestnut    | 7  | 37 | 56 | 4  | 0.12 | 0.12 | 0.11 | 0.10 | 0.09 | 0.09 |
| Mocha       | 4  | 22 | 74 | 3  | 0.11 | 0.11 | 0.11 | 0.08 | 0.08 | 0.08 |
| Dark Bronze | 3  | 5  | 92 | 3  | 0.12 | 0.12 | 0.12 | 0.09 | 0.09 | 0.08 |
| Black       | 3  | 4  | 93 | 3  | 0.12 | 0.12 | 0.12 | 0.09 | 0.09 | 0.09 |

PROTECTION THAT LIVES ON  
**MICROBAN®**  
 Microban® antimicrobial protection inhibits the growth of stain-causing bacteria, mold and mildew on the shade.



MIF SEAL OF APPROVAL



TS = Solar Transmittance  
 RS = Solar Reflectance  
 AS = Solar Absorptance  
 TV = Visual Transmittance

SHGC = Solar Heat Gain Coefficient

1/8 CL = 1/8" Clear Glass  
 1/4 CL = 1/4" Clear Glass  
 1/4 HA = 1/4" Heat Absorbing Glass  
 1/2 CL = 1/2" Insulating Clear Glass  
 1 CL = 1" Insulating Clear Glass  
 1 HA = 1" Insulating Heat Absorbing Glass

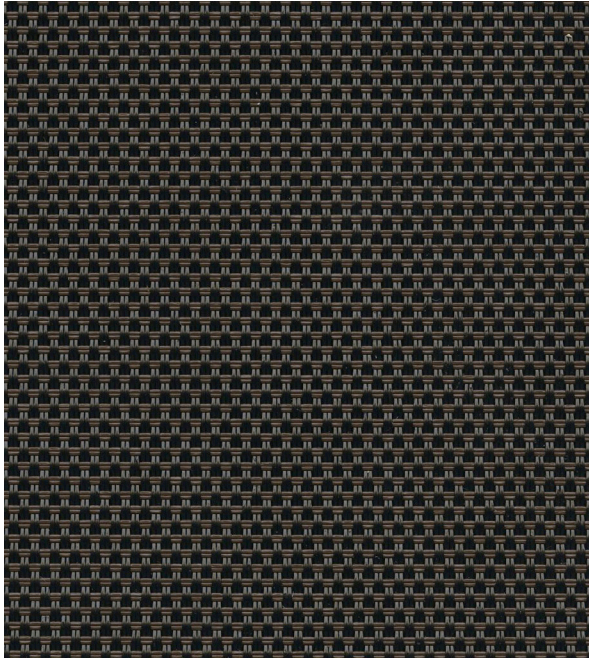
The solar optical properties are used to calculate the solar heat gain coefficient (SHGC). The SHGC represents the percentage of solar heat gain that is transmitted to the interior through the glass and shading system. Dark colors provide maximum glare reduction and visibility.

For additional performance values, test references and technical definitions visit us at [phifer.com](http://phifer.com).

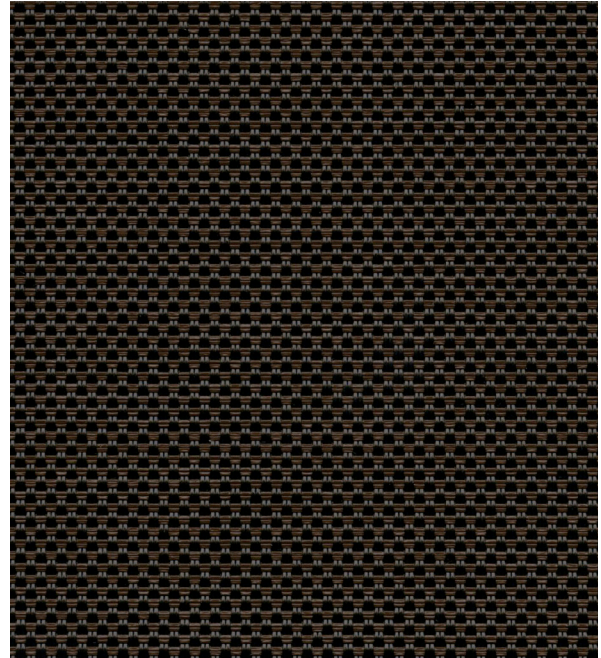
# SUNTEX 95

# SUNTEX 97

**Dark Bronze**

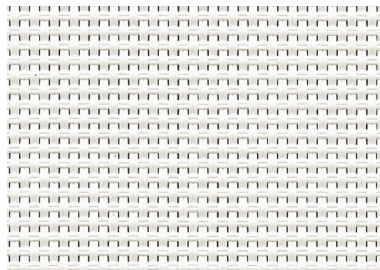


**Dark Bronze**

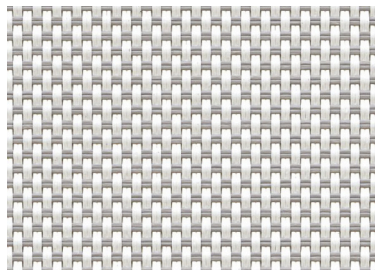


SUNTEX 95 and SUNTEX 97 are also available in the colors shown below.

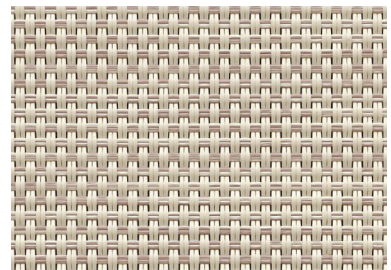
**White**



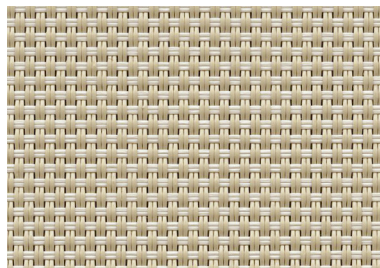
**White/Grey**



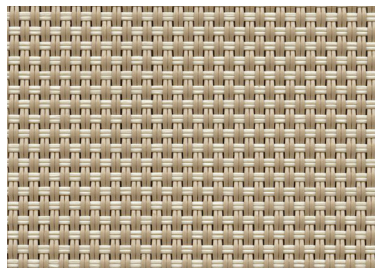
**Stucco**



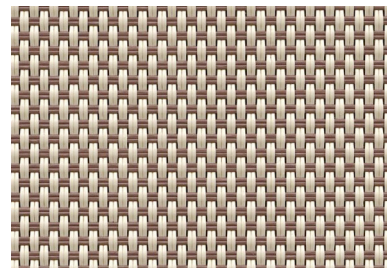
**Sand**



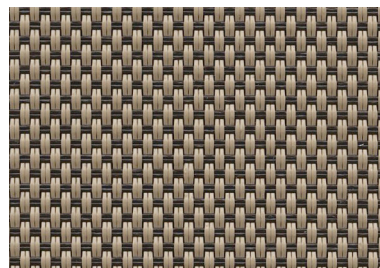
**Alpaca**



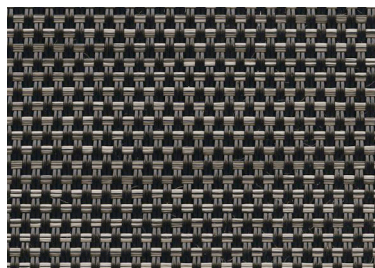
**Chestnut**



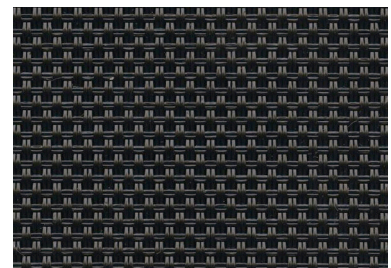
**Mocha**



**Carbon**



**Black**



\*Colors may vary based on individual computer settings and should only be used for general reference.

# SUNTEX 95/97 SPECIFICATIONS

SunTex 95/97, engineered for exterior roller shade applications, is a full basketweave vinyl-coated polyester fabric that is thinner and lighter weight than traditional SunTex. SunTex 95/97 also offers increased heat and glare control as well as daytime privacy.

|                                       |   |                           |
|---------------------------------------|---|---------------------------|
| <b>FIRE CLASSIFICATION</b>            | California Technical Bulletin 117<br>IBC Section 803.1.1 (Class A Rating)   | NFPA 101 (Class A Rating) |
| <b>BACTERIA AND FUNGAL RESISTANCE</b> | ASTM E 2180<br>Includes Microban antimicrobial additives  | ASTM G21                  |
| <b>ENVIRONMENTAL CERTIFICATION</b>    | GREENGUARD<br>Certified to these standards for low chemical emissions into indoor air during product usage  | GREENGUARD Gold           |
| <b>SAFE USE</b>                       | RoHS/Directive 2002/95/EC<br>ANSI/WCMA A 100.1-2007 for lead content<br>US Consumer Product Safety Commission Section 101<br>REACH (EC 1907/2006) compliant |                           |
| <b>WARRANTY</b>                       | 10-year exterior  |                           |
| <b>UV PROTECTION</b>                  | Seal of Approval by the Melanoma International Foundation (MIF) for effectiveness in preventing sun damage to the skin or eyes                              |                           |

| SUNTEX                         | 95   | 97   |
|--------------------------------|--|--|
| <b>WIDTHS</b>                  | 126"<br>320 cm                                     | 126"<br>320 cm                                     |
| <b>ROLL LENGTH</b>             | 90 Linear Feet<br>27.43 Linear Meters              | 90 Linear Feet<br>27.43 Linear Meters              |
| <b>COMPOSITION</b>             | 28% Polyester, 72% Vinyl on Polyester              | 28% Polyester, 72% Vinyl on Polyester              |
| <b>MESH WEIGHT</b>             | 15.1 oz/yd <sup>2</sup><br>511.98 g/m <sup>2</sup> | 16.0 oz/yd <sup>2</sup><br>542.49 g/m <sup>2</sup> |
| <b>FABRIC THICKNESS</b>        | 0.029 in<br>0.737 mm                               | 0.033 in<br>0.838 mm                               |
| <b>OPENNESS FACTOR</b>         | Approximately 5%                                   | Approximately 3%                                   |
| <b>UV BLOCKAGE</b>             | Approximately 95%                                  | Approximately 97%                                  |
| <b>BREAKING STRENGTH (LBS)</b> | 350 Warp, 235 Fill                                 | 350 Warp, 298 Fill                                 |
| <b>STIFFNESS (MG)</b>          | 524 Warp, 386 Fill                                 | 535 Warp, 433 Fill                                 |



P. O. Box 1700 • Tuscaloosa, Alabama 35403 -1700 USA  
 Phone: 205.345.2120 • FAX: 205.391.0799  
 Toll Free USA/Canada: 1.800.221.5497  
 phifer.com • ISO Registered



© SunTex is a registered trademark of PHIFER INCORPORATED.  
 © MICROBAN is a registered trademark of Microban Products Company.  
 ™ UL, the UL logos and the UL mark are trademarks of UL LLC.  
 © PHIFER INCORPORATED V21 3030867





Quality Wholesale Window Coverings  
Contract • Hospitality • Healthcare • Residential

PH: 866-753-1113 FX: 203-597-8828

email: [customerservice@porterpreston.com](mailto:customerservice@porterpreston.com) [www.porterpreston.com](http://www.porterpreston.com)

STYLE  
7100  
BLACKOUT FABRIC

---

WEAVING  
EXCELLENCE  
WITH  
INNOVATION



| Code                         | Color    | SOLAR OPTICAL PROPERTIES |    |    |    | SHGC/G VALUE<br>g-tot (glass & blind) |                    |
|------------------------------|----------|--------------------------|----|----|----|---------------------------------------|--------------------|
|                              |          | TS                       | RS | AS | TV | SINGLE<br>1/4 CL                      | INSULATING<br>1 HA |
| <b>STYLE 7100 - BLACKOUT</b> |          |                          |    |    |    |                                       |                    |
| P02                          | White    | 0                        | 71 | 29 | 0  | 0.23                                  | 0.19               |
| V21                          | Charcoal | 0                        | 71 | 29 | 0  | 0.23                                  | 0.19               |



PROTECTION THAT LIVES ON  
**MICROBAN**<sup>®</sup>

Microban<sup>®</sup> antimicrobial protection inhibits the growth of stain-causing bacteria, mold and mildew on the shade.



PRODUCT CERTIFIED FOR  
LOW CHEMICAL EMISSIONS  
UL.COM/GG  
UL 2818



MIF Seal of Approval



SAFE USE



TRACKLESS TECHNOLOGY



ENERGY SAVING



PRINTABLE



HALOGEN FREE  
FLAME RETARDANT



PROUDLY MADE  
IN THE USA

TS = Solar Transmittance  
RS = Solar Reflectance  
AS = Solar Absorptance  
TV = Visual Transmittance

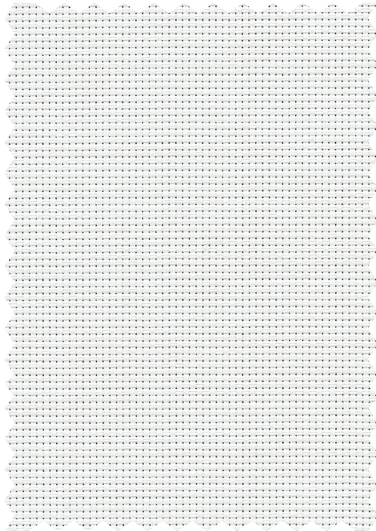
SHGC = Solar Heat Gain Coefficient

1/4 CL = 1/4" Clear Glass  
1 HA = 1" Heat Absorbing Glass

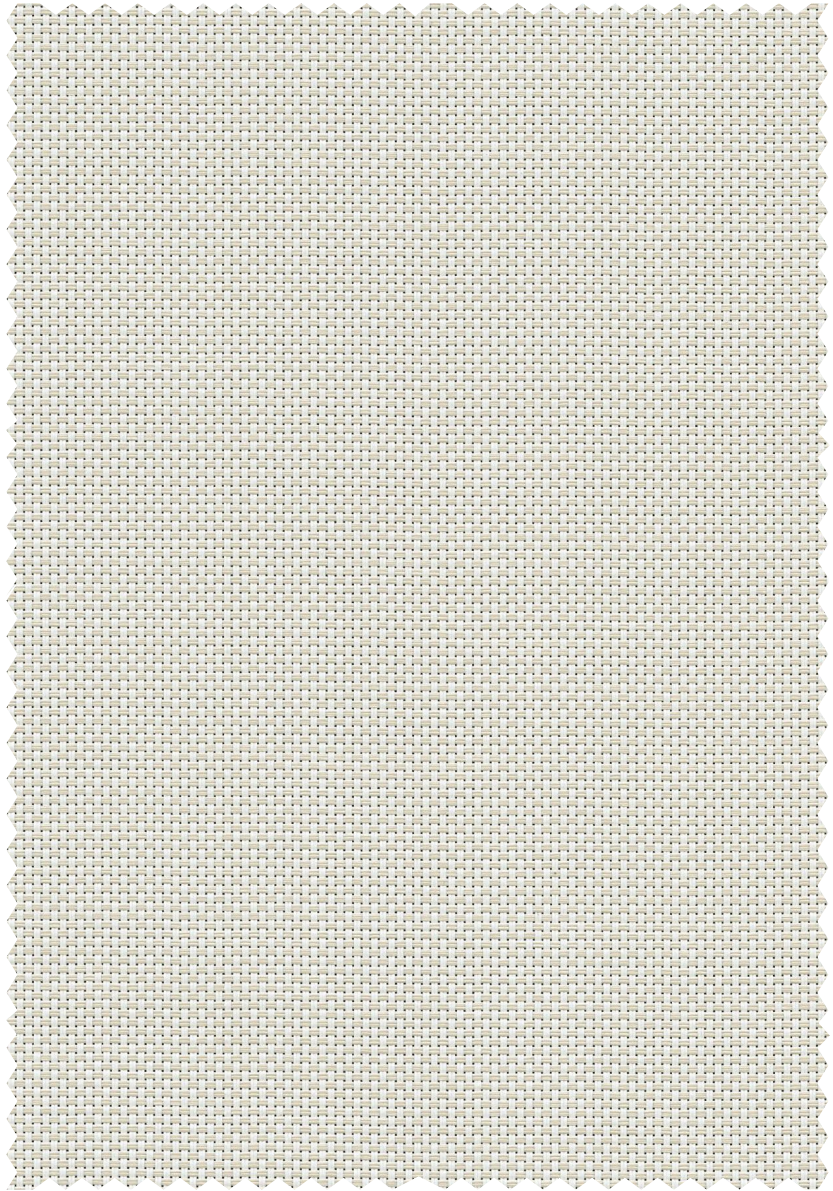
Fabrics Installed Internally  
Zero-Degree Profile Angle

For additional performance values, test references and technical definitions visit us at [phifer.com](http://phifer.com).

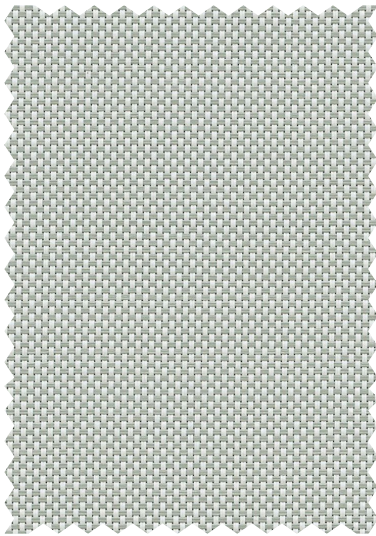
P02 **White**



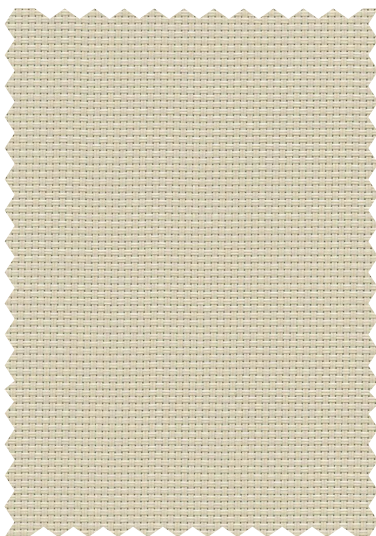
P04 **White/Bone**



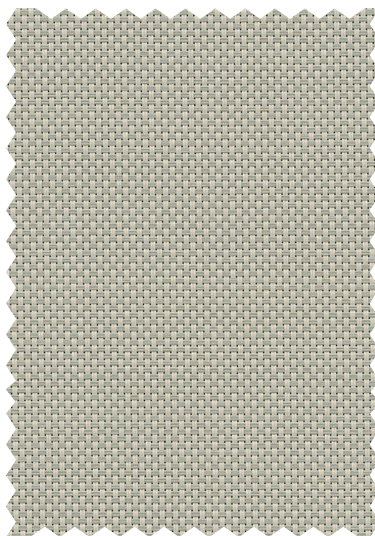
P05 **White/Platinum**



Q05 **Bone**



Q06 **Bone/Platinum**



V21 **Charcoal**



# STYLE 7100 SPECIFICATIONS

Style 7100 is a durable laminated blackout fabric that combines the woven texture of our Style 2000 as the face fabric with a durable vinyl backing to achieve total light blockage. Style 7100 coordinates easily with other SheerWeave fabrics when multi-purpose shades are needed. All Style 7100 colors have a white backing.

|  |   |  |
|--|---|--|
| <b>FIRE CLASSIFICATION</b>   | NFPA 701 TM#1 (small scale)<br>NFPA 701 TM#2 (large scale)<br>NFPA 101 (Class B Rating)   | CAN/ULC-S 109 (large and small scale)<br>IBC Section 803.1.1 (Class B Rating)<br>BS 5867 Part 2 Type B Performance |
| <i>Fire classifications are subject to change. Please go to <a href="http://phifer.com">phifer.com</a> for the most current information.</i> |   |  |
| <b>BACTERIA AND FUNGAL RESISTANCE</b>  | ASTM E 2180      ASTM G21      AATCC30 Part 3      ASTM D 3273      ASTM G22<br>GREENGUARD Mold and Bacteria Standard ASTM 6329<br>Style 2000 face includes Microban antimicrobial additives.   |  |
| <b>ENVIRONMENTAL CERTIFICATION</b>   | GREENGUARD      GREENGUARD Gold   |  |
|  | Certified to these standards for low chemical emissions into indoor air during product usage  |  |
| <b>SAFE USE</b>  | RoHS/Directive 2002/95/EC<br>ANSI/WCMA A 100.1-2007 for lead content<br>US Consumer Product Safety Commission Section 101   | REACH (EC 1907/2006) compliant   |
| <b>WARRANTY</b>  | 10-year interior  |  |
| <b>ACOUSTICAL PERFORMANCE</b>  | NRC (Noise Reduction Coefficient) and SAA (Sound Absorption Average) tested in accordance with ASTM C423-09a  |  |
| <b>UV PROTECTION</b>   | Seal of Approval by the Melanoma International Foundation (MIF) for effectiveness in preventing sun damage to the skin or eyes  |  |
| <b>TRACKLESS</b>   | TrackLess Technology minimizes the fiberglass yarns' inherent tendencies to track when being rolled up in a shade. With TrackLess Technology these same fabrics now track less, roll up straighter and reduce shade fabrication time. |  |
|  | <i>Due to the construction of Style 7100, some cupping may occur. Railroadng this fabric is not recommended.</i>  |  |

## STYLE 7100

|                         |  |
|-------------------------|--|
| <b>WIDTHS</b>           | 63" and 96"<br>160 cm and 243.8 cm   |
| <b>ROLL LENGTH</b>      | 30 Linear Yards<br>27.4 Linear Meters  |
| <b>COMPOSITION</b>      | 37% Fiberglass, 63% Vinyl on Fiberglass<br>Laminated with a two-ply 100% PVC blackout film |
| <b>MESH WEIGHT</b>      | 21.6 oz/yd <sup>2</sup><br>732 g/m <sup>2</sup>  |
| <b>FABRIC THICKNESS</b> | 0.025 in<br>0.64 mm  |
| <b>OPENNESS FACTOR</b>  | Opaque   |
| <b>ACOUSTICAL VALUE</b> | NRC .05 / SAA .03  |

**PHIFER**  
INCORPORATED

P. O. Box 1700 • Tuscaloosa, Alabama 35403-1700 USA  
Phone: 205.345.2120 • FAX: 205.391.0799  
Toll Free USA/Canada: 1.800.221.5497  
[phifer.com](http://phifer.com) • ISO Registered



© SheerWeave is a registered trademark of PHIFER INCORPORATED.  
© MICROBAN is a registered trademark of Microban Products Company.  
™ UL, the UL logos and the UL mark are trademarks of UL LLC.  
Photo courtesy of Rielamericano, Buenos Aires, Argentina.  
© PHIFER INCORPORATED V20 021420 3033843

# TuffScreen®

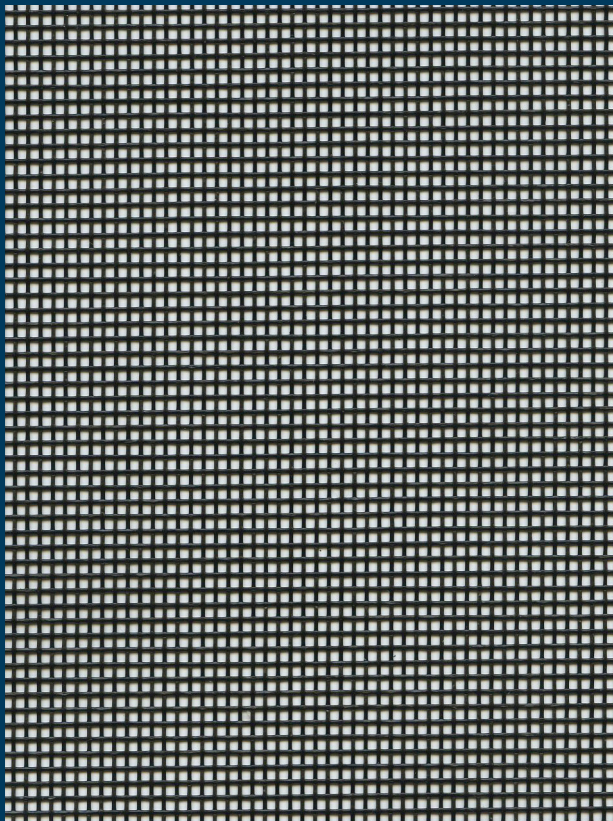
BY PHIFER

- Stronger than traditional insect screening
- Durable, vinyl-coated polyester
- Resists tears, punctures and damage from pets
- Ideal for use in high traffic areas
- Width options up to 132"
- For patios, porch enclosures, retractable systems, windows, doors, and expanded view openings

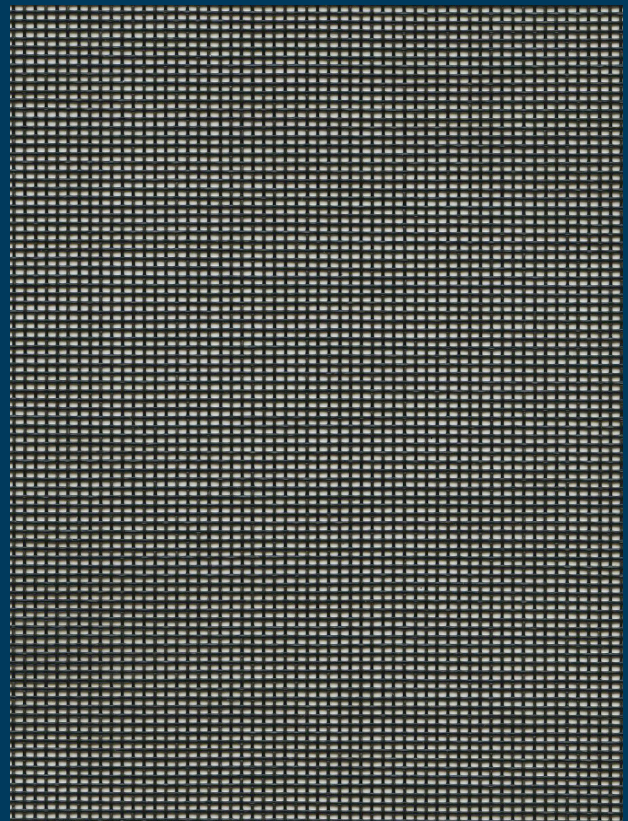
# TuffScreen® No-See-Um

BY PHIFER

- Protection from small insects
- Offers good daytime privacy
- Width options up to 132"
- For patios, porch enclosures, windows, doors, and expanded view openings



TuffScreen®



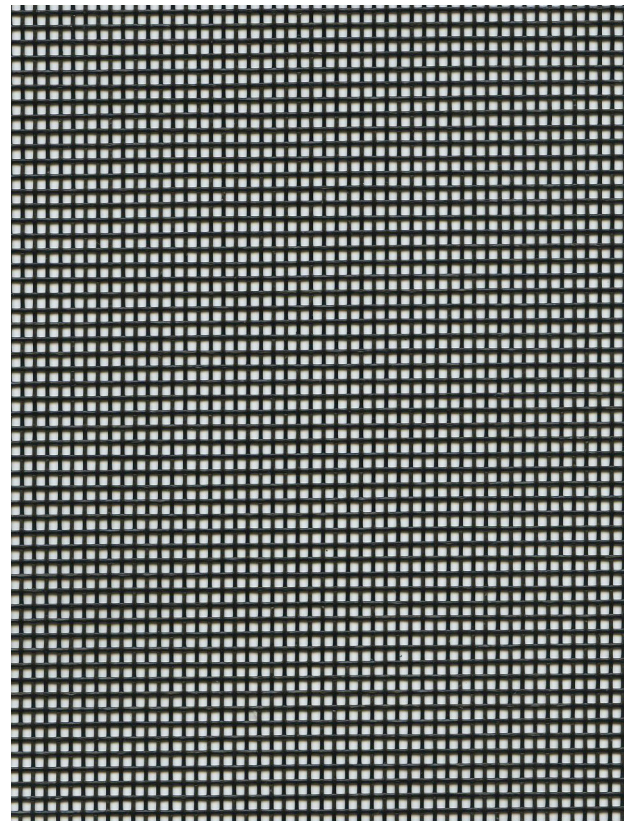
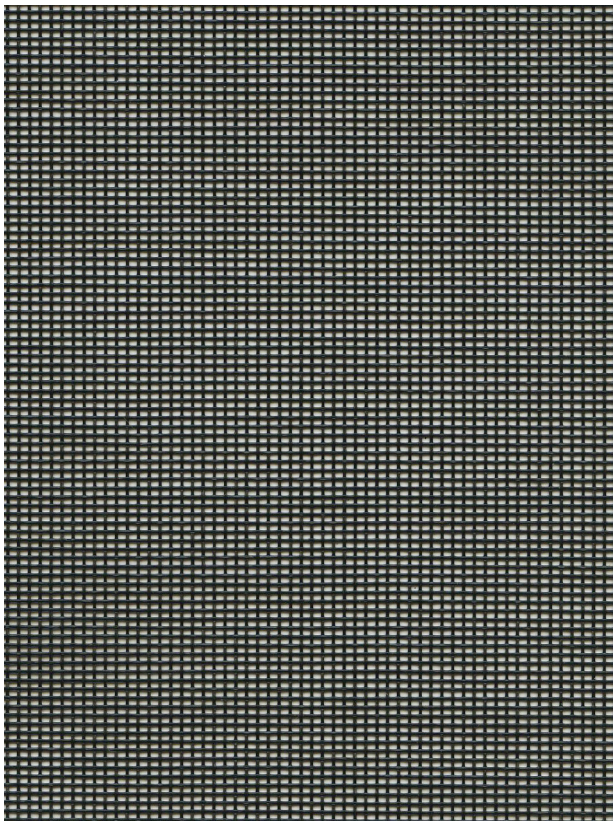
TuffScreen® No-See-Um



Heavy-Duty Insect Screen



## Perfect choice for expanded view openings



### TUFFSCREEN & TUFFSCREEN NO-SEE-UM SPECIFICATIONS

**COLORS** Black

**WIDTHS** 36", 48", 60", 72", 84", 96", 108", 120" and 132"  
(91.4 cm, 121.9 cm, 152.4 cm, 182.9 cm,  
213.4 cm, 243.8 cm, 274.32 cm, 304.8 cm  
and 335.3 cm)

**ROLL LENGTH** 100' (30.48 m) in all widths; 50' (15.24 m) in  
all widths except 108", 120" and 132" (274.32  
cm, 335.3 cm and 304.8 cm)

**PACKAGING** Individually wrapped in clear plastic



P. O. Box 1700 • Tuscaloosa, Alabama 35403 -1700 USA  
Phone: 205.345.2120 • FAX: 205.750.4890  
Toll Free USA/Canada: 1.800.854.9473  
phifer.com • ISO Registered



PRODUCT CERTIFIED FOR  
LOW CHEMICAL EMISSIONS  
UL.COM/GG  
UL 2818



© TuffScreen is a registered trademark of PHIFER INCORPORATED.  
© MICROBAN is a registered trademark of Microban Products Company.  
™ UL, the UL logos and the UL mark are trademarks of UL LLC.  
© PHIFER INCORPORATED V20 3021979