

Howlin' Wolf Solar Energy Development

Maple Creek, Wisconsin

Project overview

Howlin' Wolf Solar is a proposed solar energy facility to be located in Maple Creek with a capacity of 150MW. The project will be built on approximately 1,200-1,600 acres and is expected to start construction as early as 2025.

Local economic benefits

Solar energy projects provide substantial revenue to local economies and are important additions to the tax base. Under Wisconsin's current Utility State Aid Shared Revenue formula, local governments would receive a total of \$4,500/MW/year, or \$675,000/year for the Project, with Outagamie County receiving 58 percent (\$391,500) of the total and Maple Creek receiving 42 percent (\$283,500).

Job creation

Solar energy projects like **Howlin' Wolf Solar** are engines of economic opportunity. Construction of the project is expected to support hundreds of jobs, with additional new, permanent well-compensated positions being created once the facility is operational. Spending at the facility provides economic benefits to the surrounding area for years to come.

Environmental and community benefits

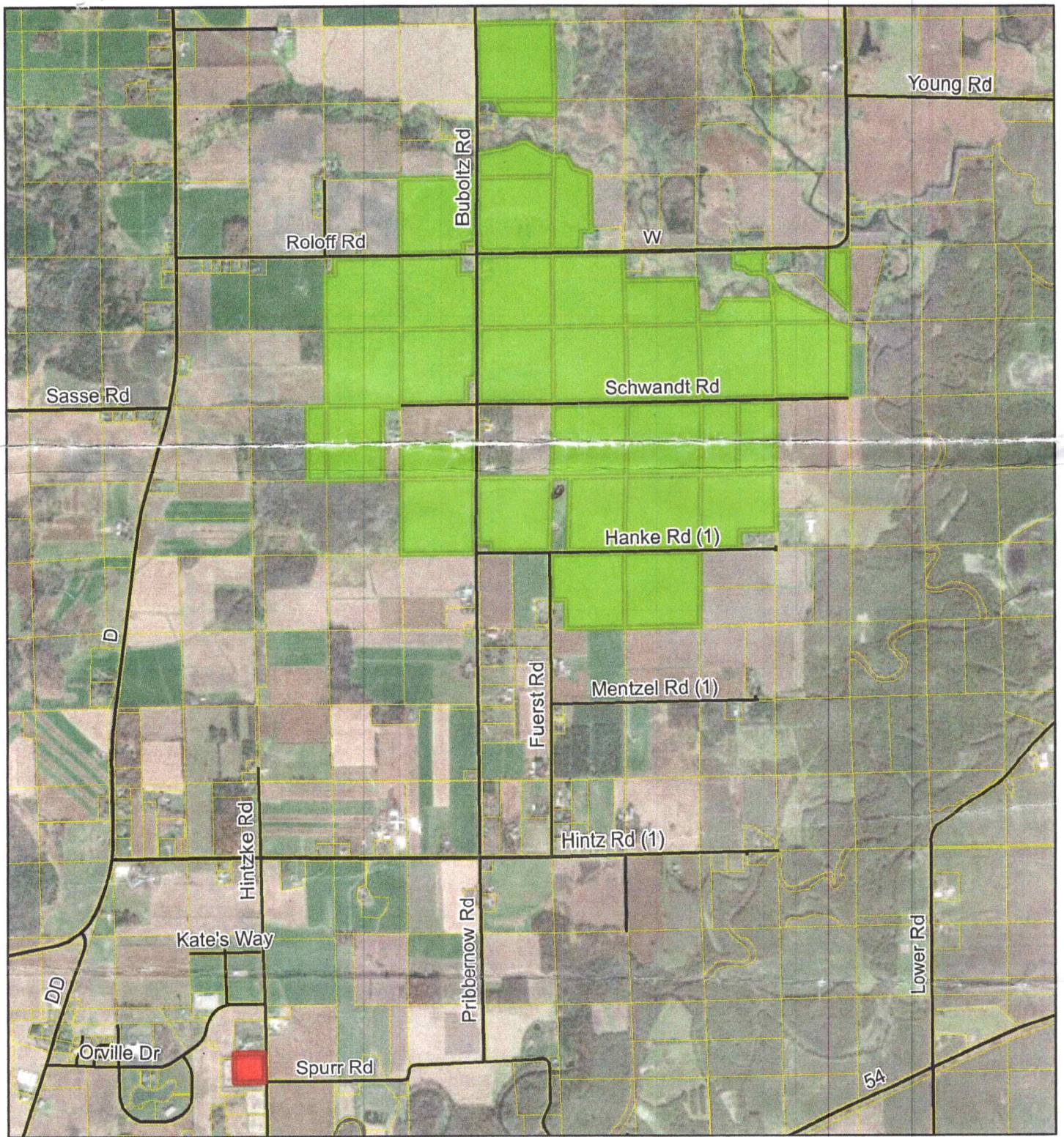
- Howlin' Wolf Solar will generate enough clean energy to power approximately 27,000 Wisconsin homes
- Solar creates clean energy from a non-depleting, local energy source that neither consumes nor discharges water, has no air emissions, and emits no odors.
- Avangrid will establish a vegetative cover including natural pollinator species which will provide increased opportunity for pollinators (honeybees, butterflies, etc.), and will benefit pollination of nearby crops.

Contact: Derek Bus

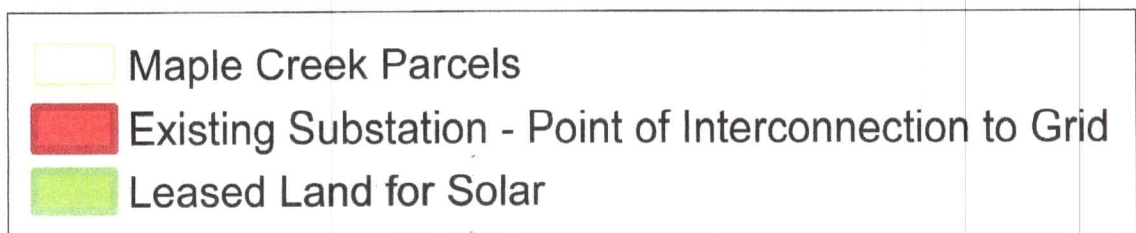
Phone Number: 971-346-0090

Refer to: Howlin' Wolf Solar

Email: Derek.Bus@Avangrid.com



Howlin' Wolf Solar August 2023





September 1, 2023

New London, WI 54961

RE: Howlin' Wolf Solar Maple Creek Town Hall

First, we would like to personally 'Thank you' once again for attending the Town Hall meeting on Monday, August 21. We hope you found the information and discussions helpful and left with a better understanding of our project.

To recap our discussion, we are still actively working on leasing and obtaining an easement to the substation. To address concerns that were made, we are revisiting the possibility of running the electrical line easement underground and will be reaching out to those individual landowners in those areas of interest.

Furthermore, we will increase the panel setbacks from nearby homes from 200 feet to 300 feet. There will also be a panel setback from residential property lines of 200 feet. We will be in communication with those landowners who are adjacent to the solar project so we can offer a Good Neighbor Agreement. Finally, we have plans to start working with a landscaping design team to incorporate more robust screening near residential areas.

We appreciate your willingness to attend the meeting. If you have any questions, please feel free to contact us.

Thank you,

Rachael Grant & Derek Bus

Rachael Grant
Project Developer
Phone: 815.751.5629
Email: rachael.grant@avangrid.com

Derek Bus
Project Developer
Phone: 971.346.0090
Email: derek.bus@avangrid.com



Mailed
April 8, 2025

We hope this letter finds you & your family well!

Avangrid has put together this short informational mailer to update and provide information regarding the 150 megawatt (MW) Howlin' Wolf Solar project Avangrid is developing in Maple Creek. Please note, Howlin' Wolf is no longer pursuing the battery storage element as part of the project.

Company Overview

- Avangrid is one of the top power companies in the US, with over \$48 billion in assets across 23 states.
- Avangrid owns and operates over 75 wind, solar, hydroelectric, and natural gas projects in the US totaling over 10.5 gigawatts of installed capacity. As a reference, the Point Beach Nuclear Power Plant in Two Rivers is 1.2 gigawatts.

Project Status

- Avangrid currently has about 1,400 acres leased for the project. We secured most of the easement route necessary to connect the project to the substation in New London. There are approximately one dozen landowners who have leased land or provided easements for the project.
 - If you are interested in participating in the project and benefitting from annual lease or easement payments, please reach out to learn more!
- The project plans to apply for a permit from the Public Service Commission of Wisconsin (PSC) later this year. The PSC's role is to approve construction projects that are found to be necessary to replace aging infrastructure and to serve the needs of increasing demand for electricity.
- You can search "PSC - How Construction Projects Are Approved" to learn more about the process for approval and the various ways easements necessary for construction might be obtained. We anticipate construction on the Howlin' Wolf Solar project will begin in late 2026 or early 2027.

Aesthetics

- The project will be set back from public roads and the panels will maintain a minimum distance of 300 feet from any non-participating dwelling.
- The panels will be enclosed by permeable wildlife fencing. The strips of land between the fence and the roads or non-participating farms or dwellings can continue to be used for farming. Areas outside the fence that cannot be farmed will be planted with perennial native vegetation.

Community Benefits

- Solar energy projects provide substantial revenue to local economies and are important additions to the tax base. Under Wisconsin's current Utility State Aid Shared Revenue formula, the local jurisdictions will be provided with a tax payment of \$4,500 per MW per year, or \$675,000 in annual payments. Outagamie County will receive 58% (\$391,500.00 annually) of the total and the Town of Maple Creek will receive 42% (\$283,500.00 annually).
- Solar energy projects like Howlin' Wolf Solar are engines of economic opportunity. Construction of the project is expected to support hundreds of jobs, with additional permanent positions being created once the facility is operational.

Environmental Benefits

- The project will develop a vegetation plan to establish permanent, naturalized vegetative cover. Proper establishment of permanent native vegetation provides numerous benefits, including erosion control, competition against nuisance plant species, water infiltration, water purification, and improvements to soil health.
- The establishment of native groundcover and pollinator species will also provide increased wildlife habitat opportunities. Compared to row cropland, which is a monoculture vegetation cover, native ground cover will provide increased biodiversity and opportunities for foraging, nesting, and shelter for a wider variety of wildlife.
- The establishment of native groundcover also supports pollinator species such as honeybees and butterflies!
- Approximately 27,000 households in Wisconsin will be provided clean, renewable energy by the Howlin' Wolf Solar project.

If you have questions about the project or are interested in learning how you can participate by leasing land or providing an easement, please reach out. We plan to hold another public informational meeting in the future to keep you advised on the project and its development.

Thank you for your interest,

Avangrid Team

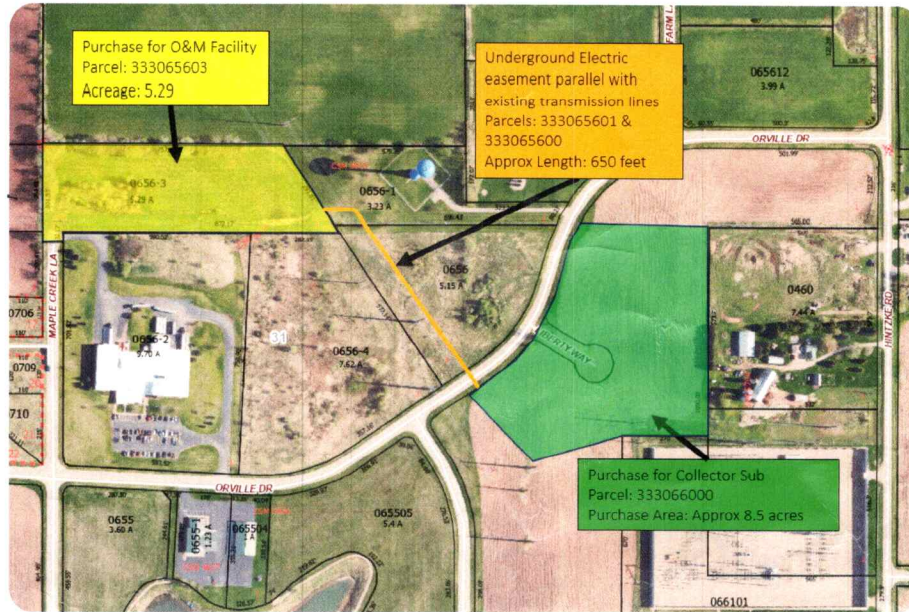
Derek Bus
Derek.Bus@Avangrid.com
971-346-0090

Rachael Grant
Rachael.Grant@Avangrid.com
815-751-5629

Tim Libson
tnlibson@trintek-energy.com
779-306-0621

August 2025

City of New London Open House



Tentative Design Subject to Change

Project Overview

- Avangrid is a leading energy company and member of the Iberdrola group with energy generating assets in 23 states. We are leading the nation's transformational change in how we produce, deliver, and use energy through cutting edge generation and transmission technologies.
- Avangrid is developing Howlin' Wolf Solar, a 150 MW solar project to be located in Maple Creek and anticipated to begin construction as early as 2027.
- As part of the project, we are proposing to construct the collection substation, underground collection lines, and Operations and Maintenance facility in the North East New London Business Park.

City Benefits

- Avangrid intends to execute an agreement to purchase approximately 12-15 acres of land in New London's Industrial/Business Park.
- Avangrid is interested in entering into an Easement Agreement with the City of New London to install underground electrical lines. The proposed agreement would pay annual rent to the city.
- Based on guidance from the State of Wisconsin Legislative Fiscal Bureau, it is estimated that the City of New London can expect to receive approximately \$1,000,000 in payments in the first 20 years of operation of the substation based on the Utility Aid Distribution Formula.