

# *Tuscany Traversing Collection*

## *Lightweight Embossed Metal Rods*

SAMPLE MANUAL CONFIGURATIONS: CORDED



### SINGLE TUSCANY TRAVERSING

Finial: 947      Rod Fascia Design: TT8055 Infinite Geometry  
Set Finish: Antique Copper      Draw Opening: Right Stack



### SINGLE TUSCANY TRAVERSING WITH RINGS

Finial: 903      Rod Fascia Design: TT8023 Tulip  
Set Finish: Antique White      Draw Opening: Right Stack



### DOUBLE TUSCANY TRAVERSING

Finial: 414      Rod Fascia Design: TT8021 Acanthus  
Set Finish: Antique Bronze      Draw Opening: Center Open



### DOUBLE TUSCANY TRAVERSING WITH RINGS

Finial: 418      Rod Fascia Design: TT8034 Spring Leaf  
Set Finish: Bronze Patina      Draw Opening: Center Open



# Tuscany Traversing Collection

## Lightweight Embossed Metal Rods

### FASCIA DESIGNS

TT8021 ACANTHUS H 2½" (Shown in Bronze Vecchio)



TT8023 TULIP H 2½" (Shown in Cherry Gold)



TT8034 SPRING LEAF H 2¾" (Shown in Gold Antique White)



TT8026 BAROQUE H 2¾" (Shown in Rusty)



TT8036 SEA SHORE H 2¾" (Shown in Cherry Gold)



TT8028 EMBOSSED H 1⅞" (Shown in Antique Bronze)



TT8055 INFINITE GEOMETRY H 2⅝" (Shown in Antique Gold)



TT8030 BUD BRANCH H 2½" (Shown in Antique Gold)



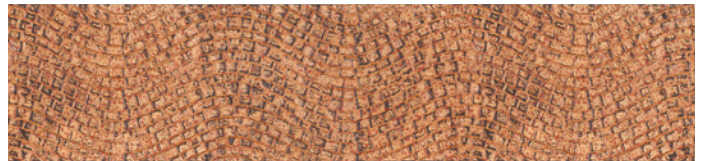
TT8057 CLASSIC H 2½" (Shown in Burnt Gold)



TT8032 SPANISH SCROLL H 2½" (Shown in Antique Bronze)



TT8059 ROYAL ROAD H 2½" (Shown in Autumn)





# Tuscany Traversing Collection

## Lightweight Embossed Metal Rods

### SAMPLE MOTORIZED CONFIGURATIONS

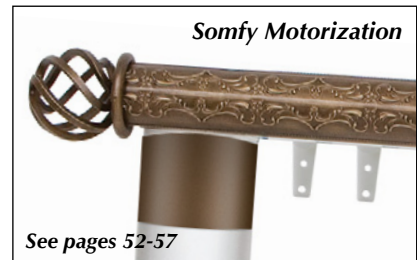
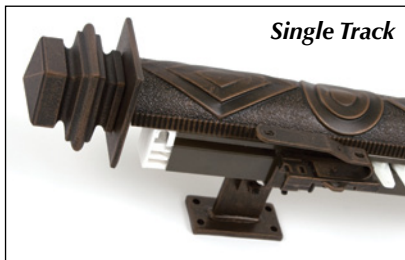


#### SINGLE TUSCANY TRAVERSING WITH SOMFY MOTORIZATION

Finial: 414                      Rod Fascia Design: TT8021 Acanthus  
Set Finish: Antique Bronze      Draw Opening: Center Open

### TUSCANY TRAVERSING OPTIONS

#### TRACK SYSTEMS



#### RING OPTIONS



#### BENT OPTION *(Rod may be bent or curved.)*



# Traversing Accessories

## HEAVY DUTY BRACKETS

WALL MOUNT  
End Brackets



**1048EBS**  
SINGLE  
END BRACKET  
*Vertical back plate*

**1049EBD**  
DOUBLE  
END BRACKET  
*Vertical back plate*

WALL MOUNT  
Support Brackets



**1050SBS**  
SINGLE SUPPORT  
BRACKET  
*Horizontal back plate*

**1051SBD**  
DOUBLE SUPPORT  
BRACKET  
*Horizontal back plate*

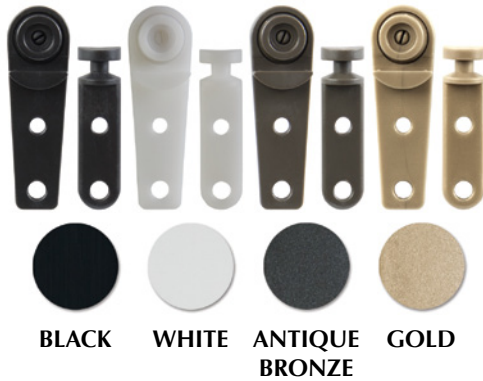
CEILING MOUNT  
End & Support Brackets



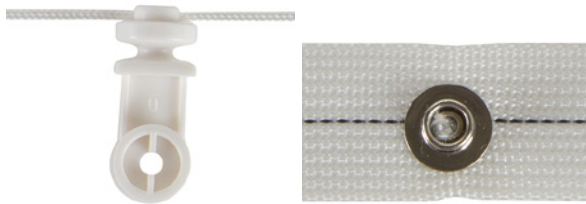
**1052CBS**  
SINGLE BRACKET  
*Horizontal top plate*

**1053CBD**  
DOUBLE BRACKET  
*Horizontal top plate*

TRACKS, PINCH PLEAT GLIDES &  
RETURN HOOKS AVAILABLE IN:



RIPPLEFOLD GLIDES  
AVAILABLE IN WHITE.



## C-RINGS

IRON

ITALIAN

WOOD



**IT350TR** **IT352TR** **IT356TR** **IC350TR** **IC352TR** **WT5047TR** **WT5049TR**  
ROUND SQUARE HAMMERED ROUND SQUARE SMOOTH FLUTED

## BATONS



**IT1016BT**  
IRON BATON  
1/2" DIA.  
Available from  
48" - 72"

**IT1020BT**  
IRON BATON  
WITH WOODEN  
HANDLE  
1/2" DIA.  
Available from  
48" - 72"