

FALCONER
CHESTER
HALL



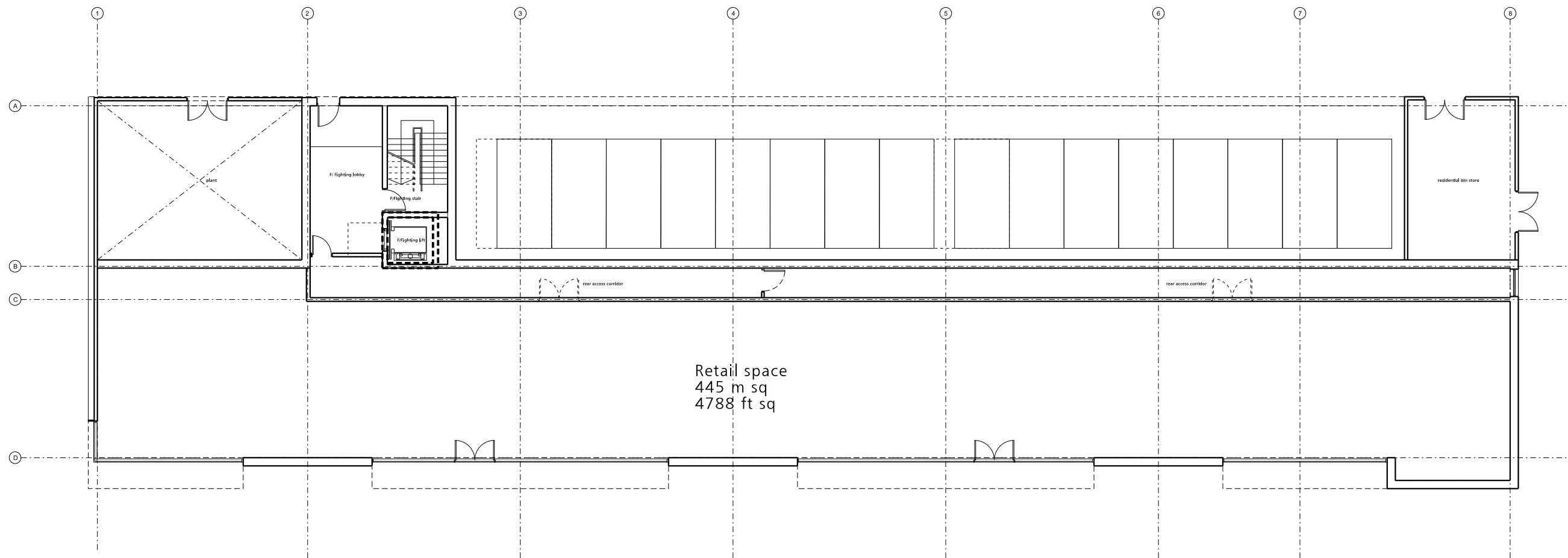
Design intelligence, commercial flair.

PROPOSED RESIDENTIAL DEVELOPMENT
X1- THE TERRACE, LIVERPOOL

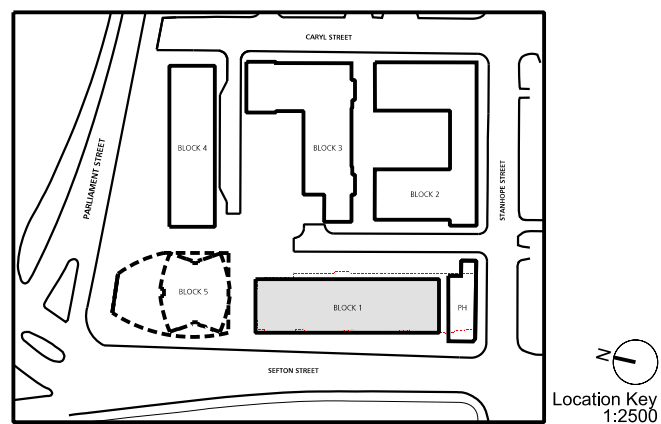
—
PROPOSED RESIDENTIAL DEVELOPMENT

—
VERMONT C.L.

—
FEBRUARY 2015



Lower Ground Floor



Location Key
1:2500

FALCONER CHESTER HALL



No 12 Temple Street, Liverpool, L2 5RH Telephone +44(0)151 243 5800
5th Floor, 22 Soho Square, London, W1D 4NS Telephone +44(0) 203 137 7393

Planning

Rev P2 - Feb 2015 - layouts revised to suit client requirements
Rev P1 - Dec 2014 - Building line pulled forward.

Project Title
Sefton Quarter Liverpool - Block 1

Drawing Title
Proposed Lower Ground Floor Plan

Client
Vermont CL

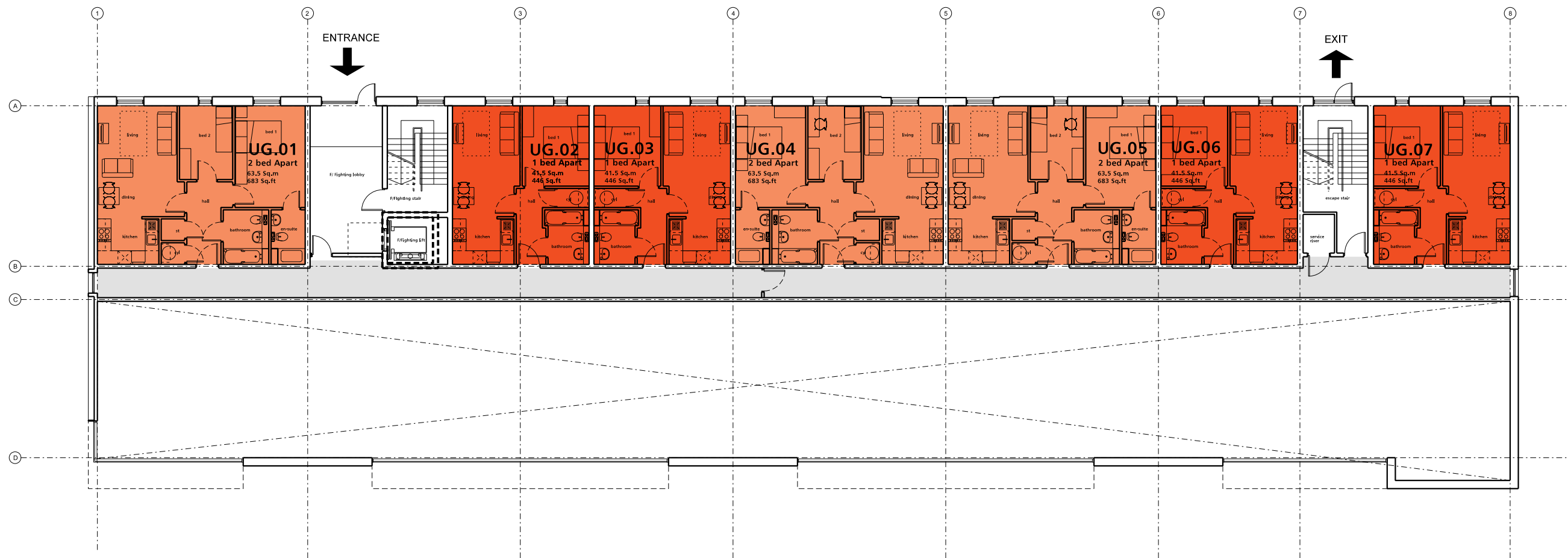
Drawn By
PN

Date
dec 2014

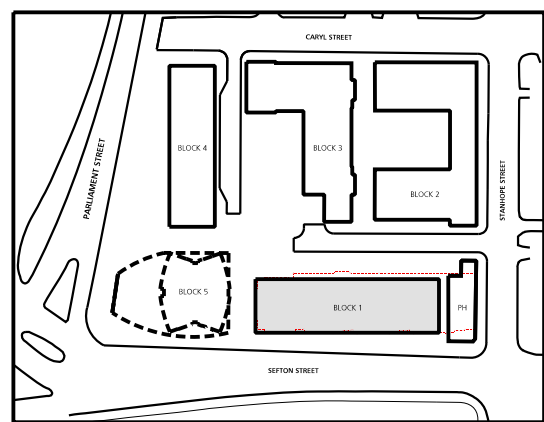
Scale
1:200 @A3

Project No.
P13-068

Drawing No.
02-03-001 P2



Upper Ground Floor



Location Key
1:2500

- One bedroom apartment
- Two bedroom apartment
- Three bedroom apartment

FALCONER CHESTER HALL



No 12 Temple Street, Liverpool, L2 5RH Telephone +44(0)151 243 5800
5th Floor, 22 Soho Square, London, W1D 4NS Telephone +44(0) 203 137 7393

Planning

Rev P2 - Feb 2015 - layouts revised to suit client requirements

Rev P1 - Dec 2014 - Building line pulled forward

Project Title

Sefton Quarter Liverpool - Block 1

Drawing Title

Proposed Upper Ground Floor Plan

Client

Vermont CL

Drawn By

PN

Date

dec 2014

Scale

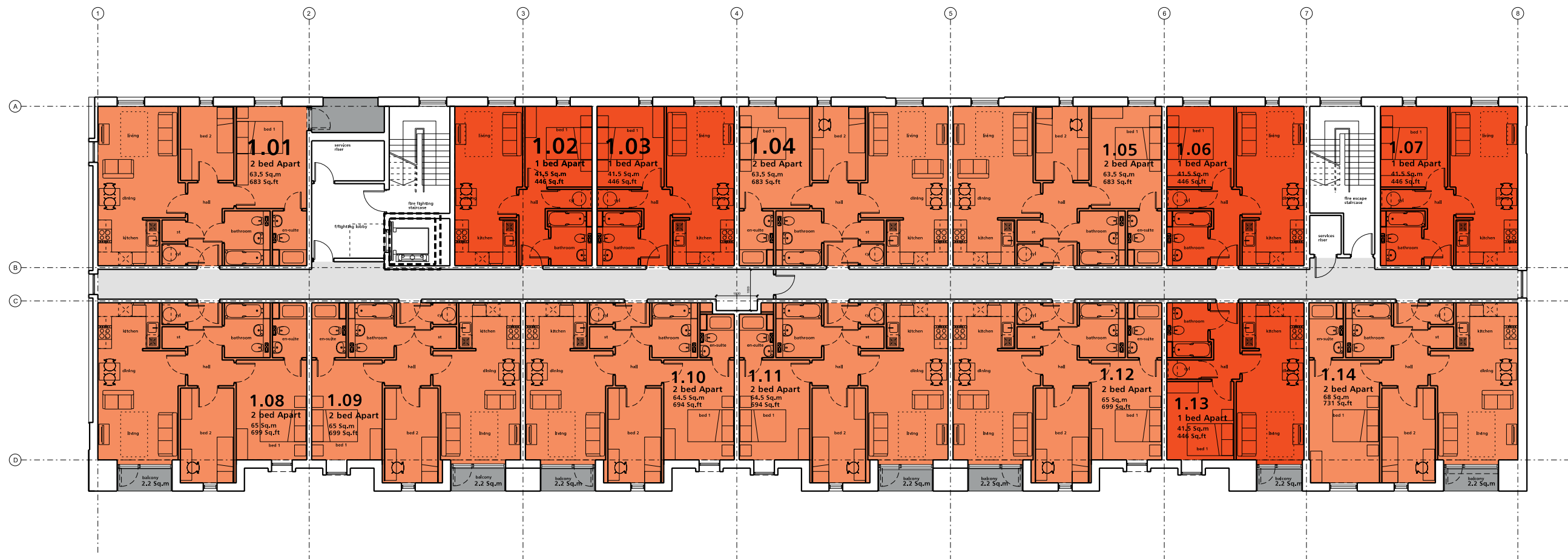
1:200 @A3

Project No.

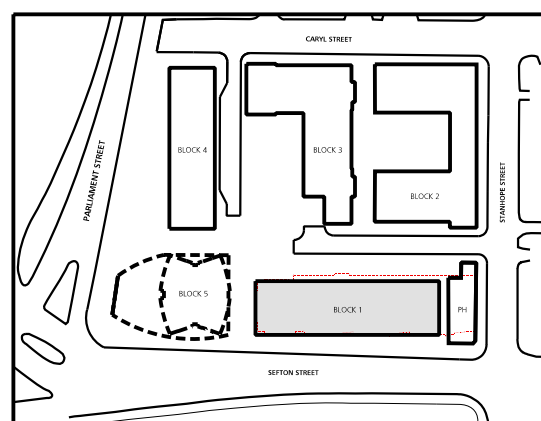
P13-068

Drawing No.

02-03-002 P2



1st Floor



Location Key
1:2500

- One bedroom apartment
- Two bedroom apartment
- Three bedroom apartment

FALCONER CHESTER HALL



No 12 Temple Street, Liverpool, L2 5RH Telephone +44(0)151 243 5800
5th Floor, 22 Soho Square, London, W1D 4NS Telephone +44(0) 203 137 7393

Planning

Project Title
Sefton Quarter Liverpool - Block 1

Drawing Title
First Floor Plan

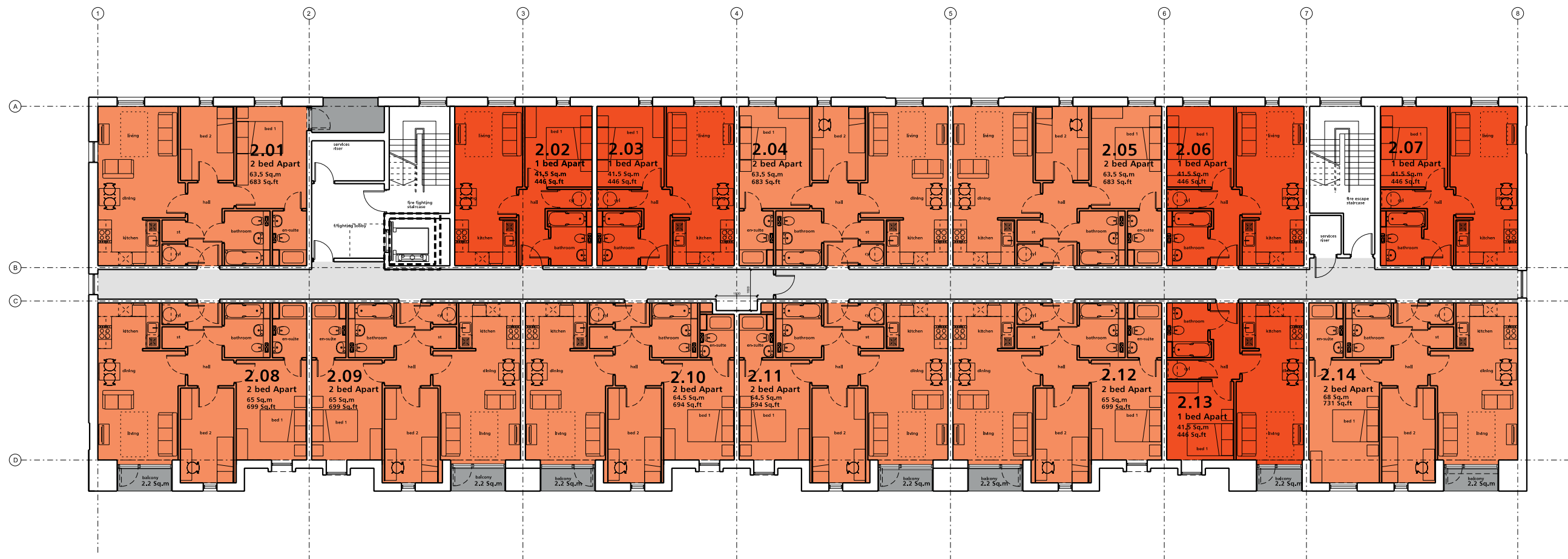
Client
Vermont CL

Drawn By Date
PN JAN 2015

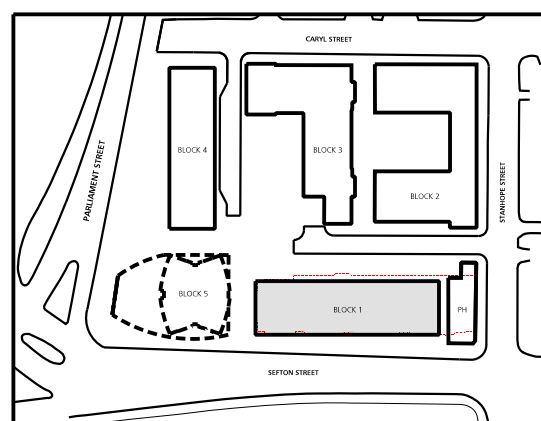
Scale
1:200 @A3

Project No.
P13-068

Drawing No.
02-03-003



2nd Floor



Location Key
1:2500

- One bedroom apartment
- Two bedroom apartment
- Three bedroom apartment

FALCONER CHESTER HALL



No 12 Temple Street, Liverpool, L2 5RH Telephone +44(0)151 243 5800
5th Floor, 22 Soho Square, London, W1D 4NS Telephone +44(0) 203 137 7393

Planning

Project Title
Sefton Quarter Liverpool - Block 1

Drawing Title
Second Floor Plan

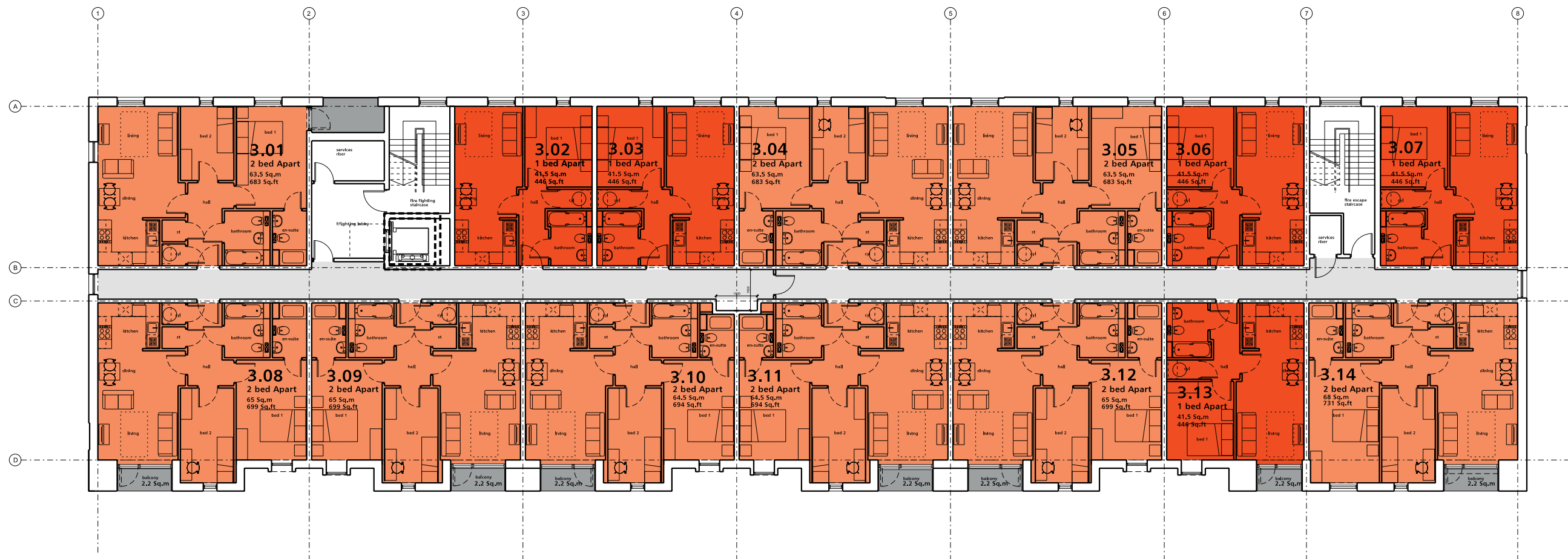
Client
Vermont CL

Drawn By Date
PN JAN 2015

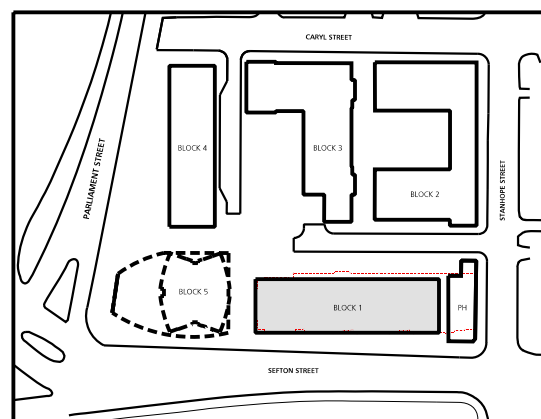
Scale
1:200 @A3

Project No.
P13-068

Drawing No.
02-03-004



3rd Floor



Location Key
1:2500

- One bedroom apartment
- Two bedroom apartment
- Three bedroom apartment

FALCONER CHESTER HALL



Telephone +44(0)151 243 5800
London | Liverpool | Kuala Lumpur

Planning

Rev P2 -Feb 2015 - dwg changed to 3rd floor not typical

Rev P1 -Feb 2015 -

Project Title
Sefton Quarter Block 1

Drawing Title
Third floor Plan

Client
Vermont CL

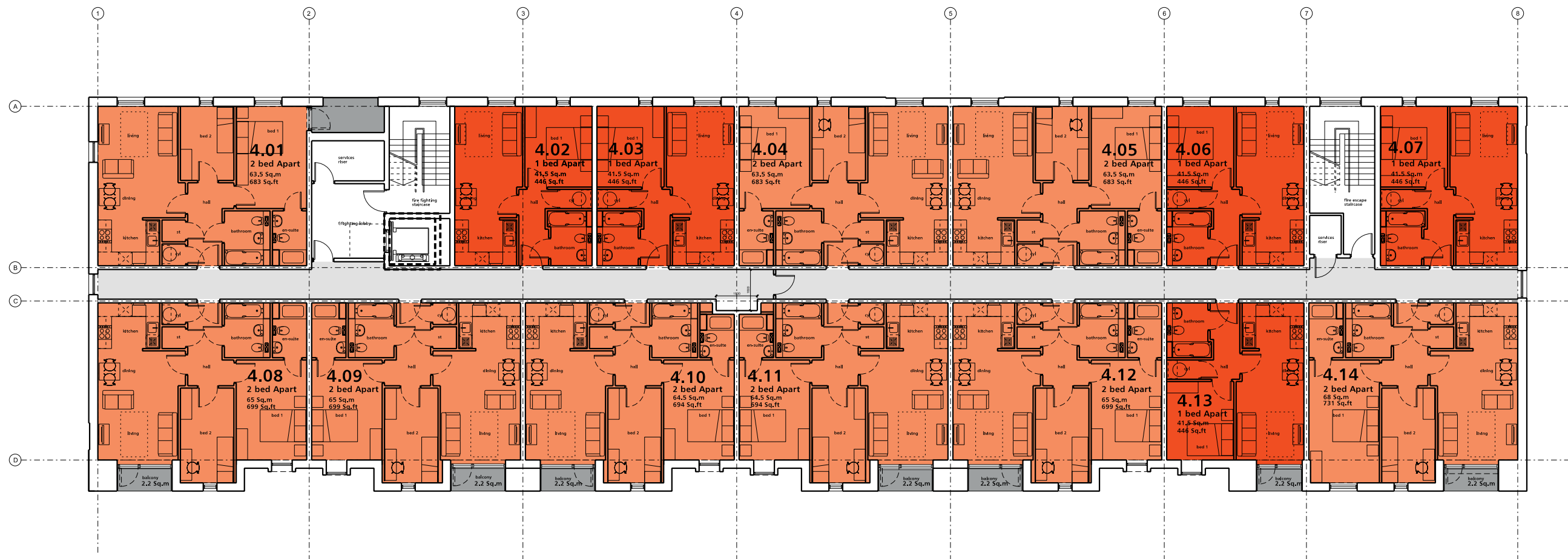
Drawn By
PN

Date
JAN 15

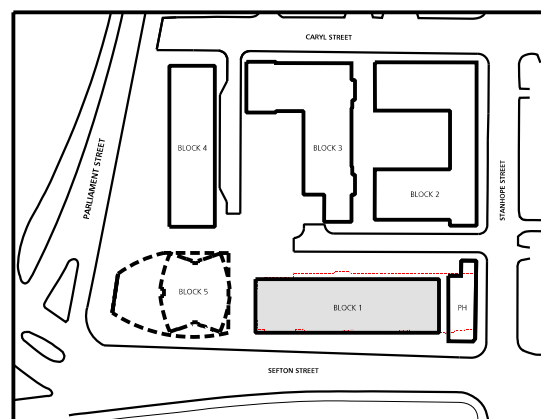
Scale
1:200 @ A3

Project No.
P13-068

Drawing No.
02-03-005 P2



4th Floor



Location Key
1:2500

- One bedroom apartment
- Two bedroom apartment
- Three bedroom apartment

FALCONER CHESTER HALL



No 12 Temple Street, Liverpool, L2 5RH Telephone +44(0)151 243 5800
5th Floor, 22 Soho Square, London, W1D 4NS Telephone +44(0) 203 137 7393

Planning

Project Title
Sefton Quarter Liverpool - Block 1

Drawing Title
Proposed Fourth Floor Plan

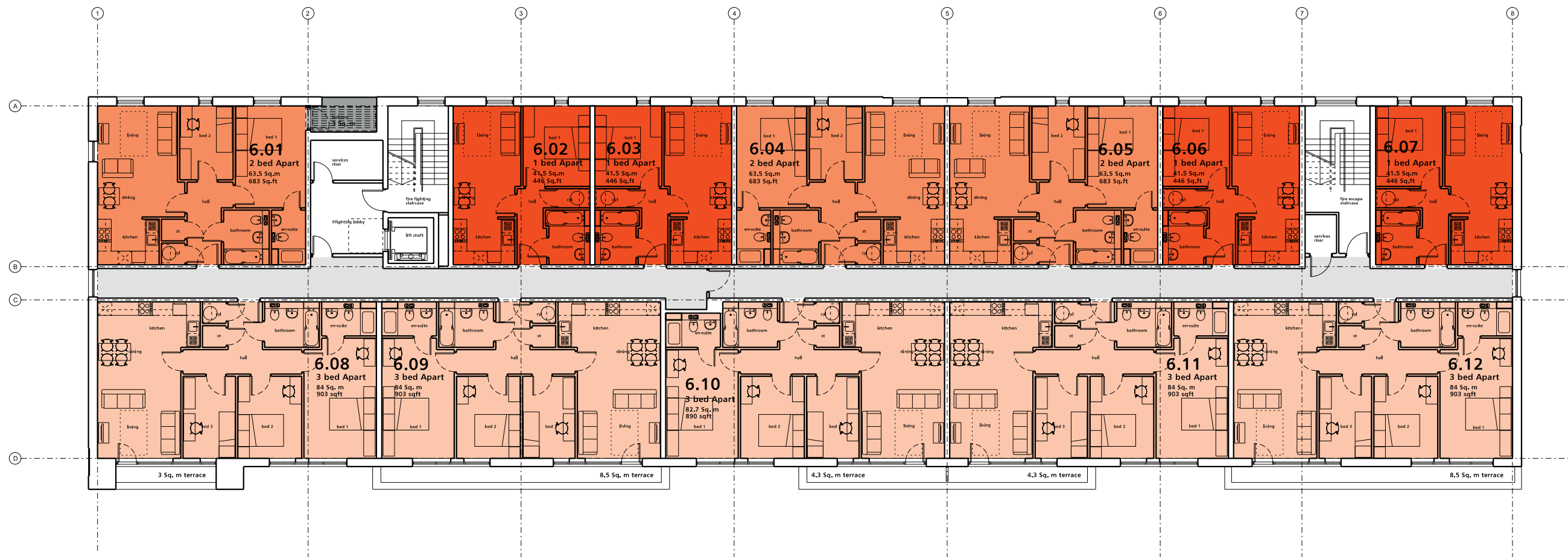
Client
Vermont CL

Drawn By Date
PN JAN 2015

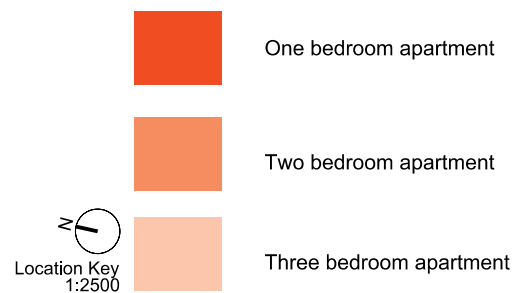
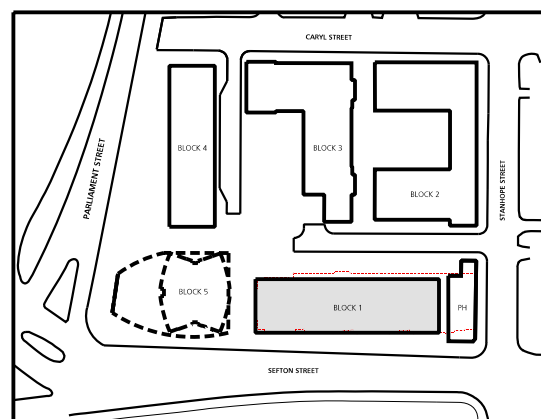
Scale
1:200 @A3

Project No.
P13-068

Drawing No.
02-03-006



6th Floor



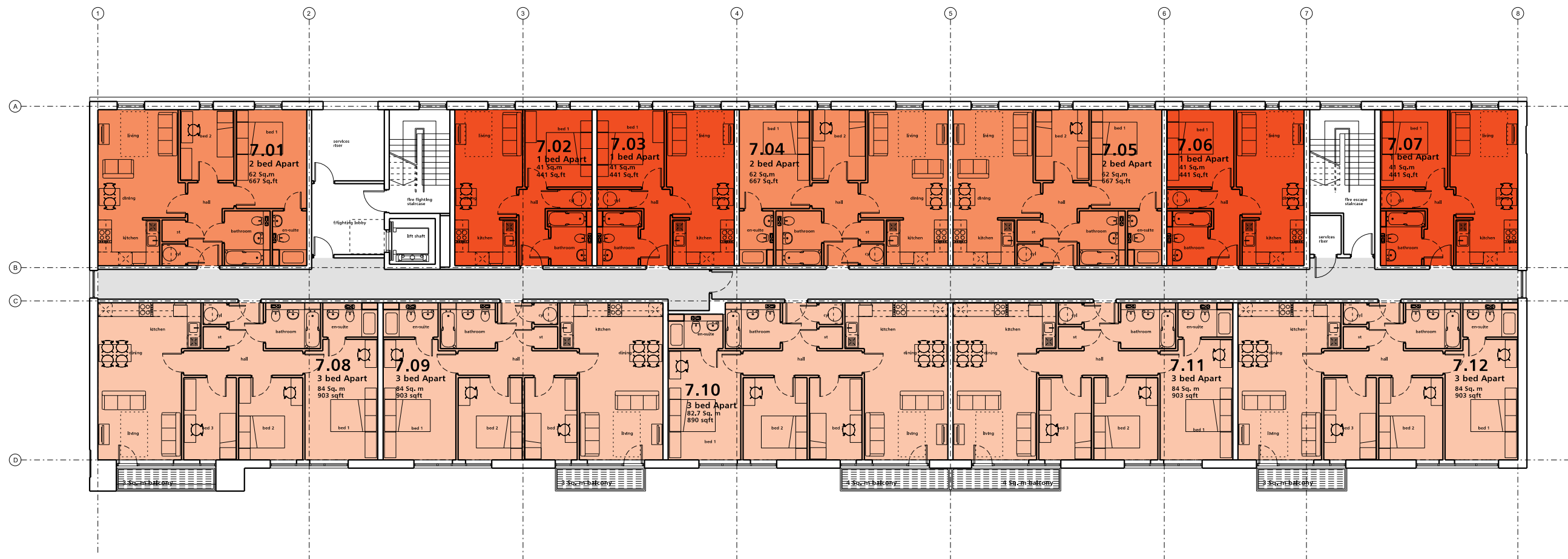
FALCONER CHESTER HALL



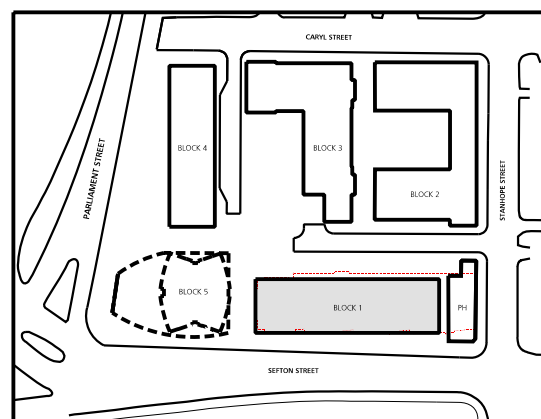
Telephone +44(0)151 243 5800
London | Liverpool | Kuala Lumpur

Planning

Rev P2 - Feb 2015 - unit type revised to suit client requirements
 Project Title
 Sefton Quarter Liverpool - Block 1
 Drawing Title
 Proposed Sixth Floor Plan
 Client
 Vermont CL
 Drawn By rac Date Feb 2015
 Scale 1:200 @A3
 Project No. P13-068
 Drawing No. 02-03-008 P2



7th Floor



Location Key
1:2500

- One bedroom apartment
- Two bedroom apartment
- Three bedroom apartment

FALCONER CHESTER HALL



No 12 Temple Street, Liverpool, L2 5RH Telephone +44(0)151 243 5800
5th Floor, 22 Soho Square, London, W1D 4NS Telephone +44(0) 203 137 7393

Planning

Rev P2 - Feb 2015 - layouts revised to suit client requirements
Rev P1 - Dec 2014 - Extent of glazing revised

Project Title
Sefton Quarter Liverpool - Block 1

Drawing Title
Proposed Seventh Floor Plan

Client
Vermont CL

Drawn By Date
PN dec 2014

Scale
1:200 @A3

Project No.
P13-068

Drawing No.
02-03-009 P2

2.0 SUMMARY OF ACCOMMODATION

Lower Ground Floor

Circulation - approx. 111 sq.m / 1194sq.ft

Ancillary / Plant -approx. 62.7 sq.m / 675 sq.ft

Retail - approx. 445 sq.m / 4789 sq.ft

Total gross internal floor area: 732 sq.m / 7876 sq.ft

Upper Ground Floor

-7 no. residential units consisting of:

- 4 no. 1 bedroom apartments approx. 41.5 sq.m.

- 3 no. 2 bedroom apartments approx. 63.5 sq.m.

Total gross internal floor area: 535 sq.m / 5756sq.ft.

First - Fifth Floors

-14 no. residential units per floor consisting of:

- 5 no. 1 bedroom apartments approx 41.5 sq.m.

-9 no. 2 bedroom apartments

- 3 @ approx. 63.5 sq.m.

- 2 @ approx. 64.5 sq.m.

- 3 @ approx. 65 sq.m.

- 1 @ approx. 68 sq.m.

Total gross internal floor area: 973 sq.m. / 10469 sq.ft.

Sixth Floor -

-12 no. residential units consisting of:

- 4 no. 1 bedroom apartments approx. 41.5 sq.m

- 3 no. 2 bedroom apartments approx. 63.5 sq.m

-5 no. 3 bedroom apartments

- 1 @ approx. 82.7 sq.m

- 4 @ approx. 84 sq.m

Total gross internal floor area: 955 sq.m. / 10275 sq.ft.

Seventh Floor -

-12 no. residential units consisting of:

- 4 no. 1 bedroom apartments approx. 41 sq.m

- 3 no. 2 bedroom apartments approx. 62 sq.m

- 1 no. 3 bedroom apartments approx. 82.7 sq.m

- 4 no. 3 bedroom apartments approx. 84 sq.m

Total gross internal floor area: 945 sq.m. / 10168 sq.ft.

Total Residential Units: 101 Units. Consisting of:

-10 no. 3 bedroom apartments.

-8 @ approx 84 sq.m.

-2 @ approx 82.7 sq.m.

-54 no. 2 bedroom apartments

-5 @ approx. 68 sq.m.

-15 @ approx 65 sq.m.

-10 @ approx. 64.5 sq.m.

-21 @ approx. 63.5 sq.m.

-3 @ approx. 62 sq.m.

-37 no.1 bedroom apartments

-33 @ approx. 41.5 sq.m.

-4 @ approx. 41 sq.m.

Note: Layouts based on preliminary information. All figures/ areas are approximate and subject to measured survey, planning/ building regulations approval and detailed design.



FALCONER
CHESTER
HALL

PROPOSED RESIDENTIAL DEVELOPMENT
X1- THE TERRACE, LIVERPOOL

FOR VERMONT C.L.

FEBRUARY 2015

FCH

Design intelligence, commercial flair.

CONTACT

Falconer Chester Hall

N°12 Temple Street
Liverpool L2 5RH

Telephone +44 (0)151 243 5800

Facsimile +44 (0)151 243 5801

www.fcharchitects.com

FCH

Design intelligence, commercial flair.
