

**Mouse Anti-HLA-DP/-DR (MHC II) [Bra-14]: MC0058**

**Intended Use:** For Research Use Only

**Description:** Reacts with a common epitope of human major histocompatibility (MHC) class II antigens, HLA-DR and DP. Human MHC class II antigens are transmembrane glycoproteins composed of an  $\alpha$  chain (36kDa) and a  $\beta$  chain (27kDa). They are expressed primarily on antigen presenting cells such as B lymphocytes, monocytes, macrophages, and thymic epithelial cells and are also present on activated T lymphocytes. Human MHC class II genes are located in the HLA-D region that encodes at least six and ten chain genes. Three loci, DR, DQ and DP, encode the major expressed products of the human class II region. The human MHC class II molecules bind intracellularly processed peptides and present them to T-helper cells. They, therefore, have a critical role in the initiation of the immune response. It has been shown that some autoimmune diseases are associated with certain class II alleles.

**Specifications**

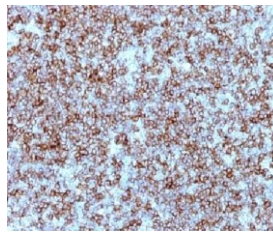
Clone:	Bra-14
Source:	Mouse
Isotype:	IgG3k
Reactivity:	Human
Localization:	Membrane
Formulation:	Protein A/G purified antibody in PBS pH7.4, containing BSA and $\leq 0.09\%$ sodium azide (NaN <sub>3</sub> )
Storage:	Store at 2°- 8°C
Applications:	IHC, Flow Cyt., ICC/IF
Package:	

Description	Catalog No.	Size
HLA-DP/-DR (MHC II) Concentrated	MC0058	1 ml

**IHC Procedure\***

Positive Control Tissue:	Raji cells. Tonsil, lymph node
Concentrated Dilution:	50-200
Pretreatment:	Citrate pH6.0, 15 minutes using Pressure Cooker, or 30-60 minutes using water bath at 95°-99°C
Incubation Time and Temp:	30-60 minutes @ RT
Detection:	Refer to the detection system manual

\* Result should be confirmed by an established diagnostic procedure.



FFPE human tonsil stained with anti-HLA-DP/-DR using DAB

**References**

1. Low expression of HLA-DRA, HLA-DPA1, and HLA-DPB1 is associated with poor prognosis in pediatric adrenocortical tumors (ACT). Leite FA, et al. *Pediatr Blood Cancer*. Nov;61(11):1940-8, 2014.
2. Supplementary characteristics of anti-MHC class II monoclonal antibodies elicited by an ALL cell line: immunofluorescence cytofluorometry, C-dependent cytotoxicity, two-dimensional analysis of antigen. Chorvath B et al. *Neoplasma*, 34(4):417-425, 1987.
3. Characterization of a new murine monoclonal antibody against human DP antigens. Horejsi V et al. *Tissue Antigens*, 32(1):6-11, 1988.
4. Monoclonal antibodies against MHC class II antigens elicited with a human non-T, non-B acute lymphoblastic leukemia cell line. Polakova K et al. *Neoplasma*, 32(6):641-8, 1985.