

PRESS RELEASE – PORT OF ARLINGTON – ALKALI RIDGE – January 13, 2026

Port of Arlington is pleased to announce **Alkali Ridge Subdivision** in Arlington, Oregon. **Alkali Ridge** has a variety of development options with fantastic Columbia River views. Seventeen new residential lots are available with 2,400 feet of new roadway connections.

Alkali Ridge began by priority and commitment for workforce housing in Gilliam County. The Port demonstrates stewardship to invite growth and to welcome needed expansion. Our primary purpose is economic development, and workforce housing is a key element.

Port of Arlington, Gilliam County, Avangrid, Business Oregon provided project funding. Our key partnerships helped to buy-down the cost of overall investment and to establish reasonably priced lots that will attract interest and allow for more affordable construction.

Port of Arlington coordinated with the City of Arlington during planning and development. The Port purchased more land for the entry street, to assure better flow and connectivity. City of Arlington collaborated on waterlines and widened entry to Columbia View Estates.

Bolen Construction LLC built the subdivision in 2025 with engineering by Anderson-Perry. Infrastructure installation of water, sewer, power, and streets provides vastly improved looped-street access, coupled with ample buffering and enhanced value for existing lots.

“All of our projects happen by working together,” said Jed Crowther, Executive Director. “We can achieve progress and possibility – even plan and build a subdivision – together.” “The next phase of development may involve leveling and fill for more site preparation.”

“This is an amazing accomplishment to create new residential lots for workforce housing,” added Leah Shannon, Port Board President. “We see it as an investment in our future.”

Active marketing will be performed by Tiffani Deal, LandWise Real Estate Advisors, LLC in close coordination with the Port of Arlington. Come see our dynamic new development!

Contact Info

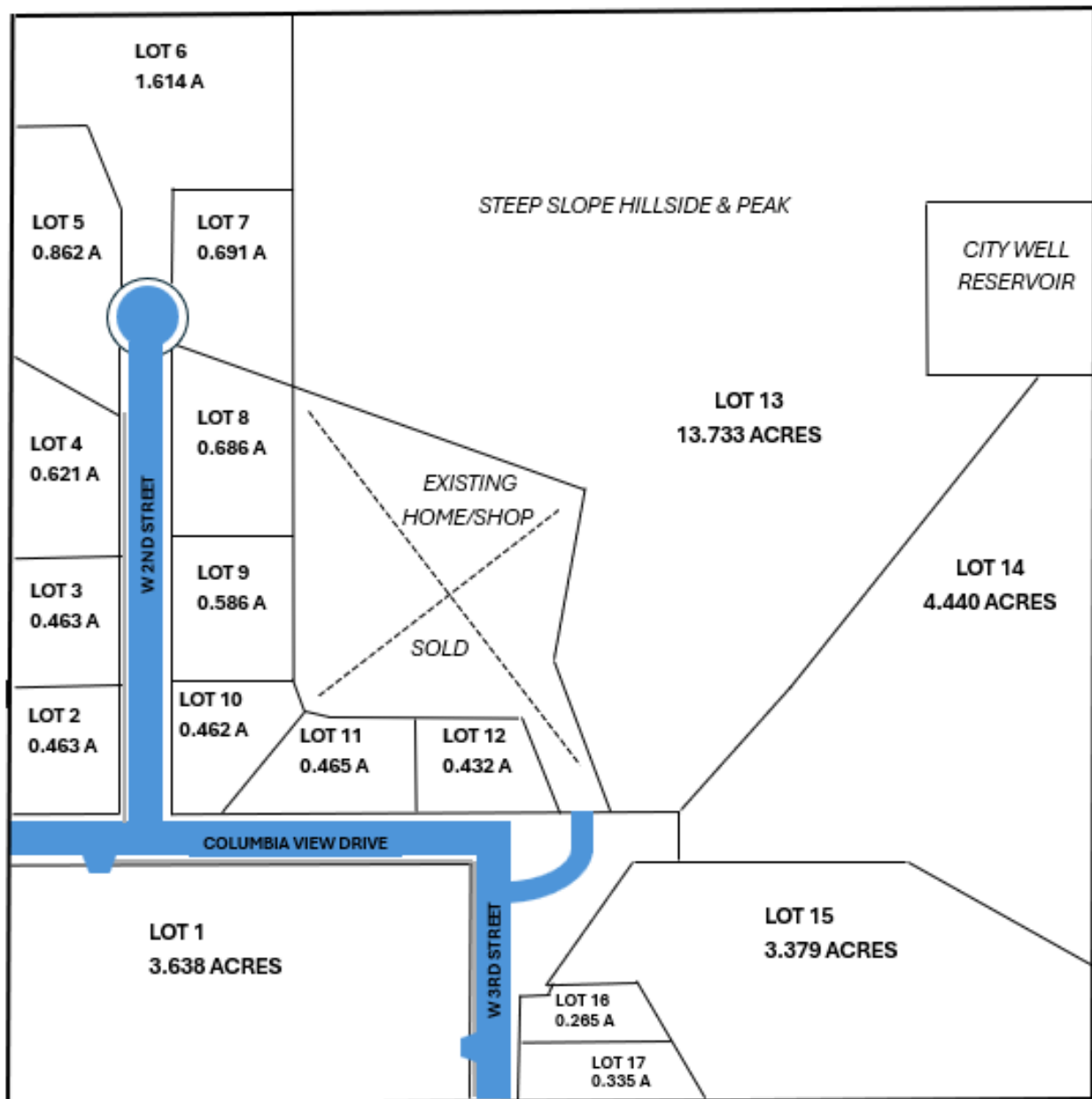
Jed Crowther
Port of Arlington
(541) 705-2004
Jed.Crowther@PortofArlington.com
www.PortofArlington.com

Tiffani Deal
LandWise Real Estate Advisors, LLC
509.366.2195
tiffani@landwisereaa.com
www.landwisereaa.com

ALKALI RIDGE – Excellent Panoramic Views facing North to the Columbia River



ALKALI RIDGE – Plat Diagram



ALKALI RIDGE – Newly Paved Streets and Sidewalks Installation, facing South



W 3rd Street Entry from Main Street



W 2nd Street uphill to new cul-de-sac