

Rabbit Anti-PDCD4 [EP102]: RM0159

Intended Use: For Research Use Only

Description: Programmed cell death protein 4 (PDCD4) was initially identified as a differentially expressed protein during apoptosis. It acts as a tumor suppressor that inhibits tumor promoter-induced neoplastic transformation. It down-regulates the expression of MAP4K1, thus inhibiting events important in driving invasion, namely, MAPK85 activation and consequent JUN-dependent transcription. PDCD4 expression has been found in both normal and tumor cells. Reduced expression of PDCD4 is frequently observed in tumors. Loss of PDCD4 expression has been correlated with tumor progression and prognosis in cancers of the lung, ovary, pancreas and esophagus. Nuclear expression of PDCD4 was associated with a longer disease-free and overall survival rate of esophageal cancer.

Specifications:

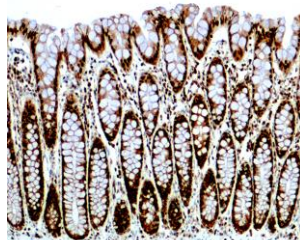
Clone: EP102
Source: Rabbit
Isotype: IgG
Reactivity: Human
Localization: Cytoplasm, nucleus
Formulation: Purified antibody with 0.2% BSA and 15mM sodium azide (NaN₃).
Storage: Store at 2°- 8°C. For longer periods of storage, store at -20°C. Avoid repeat freeze-thaw cycles
Applications: IHC
Package:

Description	Catalog No.	Size
PDCD4 Concentrated	RM0159	1 ml

IHC Procedure*:

Positive Control Tissue: Breast cancer
Concentrated Dilution: 50-200
Pretreatment: Citrate pH6.0, 15 minutes using Pressure Cooker, or 30-60 minutes using water bath at 95°-99°C
Incubation Time and Temp: 30-60 minutes @ RT
Detection: Refer to the detection system manual

* Result should be confirmed by an established diagnostic procedure.



Human colon FFPE tissue stained with anti-PDCD4 using DAB