

**Rabbit Anti-Retinoblastoma Recombinant [RB1/2313R]: RM0221, RM0221RTU7**

**Intended Use:** For Research Use Only

**Description:** This protein belongs to the lipocalin family and is the specific carrier for retinol (vitamin A alcohol) in the blood. It delivers retinol from the liver stores to the peripheral tissues. In plasma, the RBP-retinol complex interacts with transthyretin which prevents its loss by filtration through the kidney glomeruli. A deficiency of vitamin A blocks secretion of the binding protein post translationally and results in defective delivery and supply to the epidermal cells.

**Specifications**

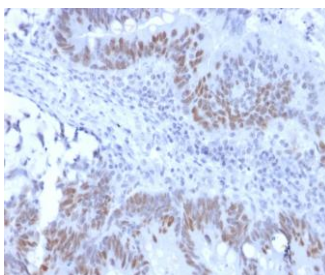
Clone: RB1/2313R  
 Source: Rabbit  
 Isotype: IgG  
 Reactivity: Human, mouse  
 Immunogen: Recombinant human full-length retinoblastoma protein  
 Localization: Nucleus  
 Formulation: Antibody in PBS pH7.4, containin BSA and ≤ 0.09% sodium azide (NaN3)  
 Storage: Store at 2°- 8°C  
 Applications: IHC  
 Package:

Description	Catalog No.	Size
Retinoblastoma Recombinant (Tumor Suppressor Protein) Concentrated	RM0221	1 ml
Retinoblastoma Recombinant (Tumor Suppressor Protein) Prediluted	RM0221RTU7	7 ml

**IHC Procedure\***

Positive Control Tissue: Breast or colon carcinoma, HeLa, A431 or BT-20 cells  
 Concentrated Dilution: 50-200  
 Pretreatment: Tris EDTA pH9.0, 15 minutes using Pressure Cooker, or 30-60 minutes using water bath at 95°-99°C  
 Incubation Time and Temp: 30-60 minutes @ RT  
 Detection: Refer to the detection system manual

\* Result should be confirmed by an established diagnostic procedure.



FFPE human colon carcinoma stained with anti-Retinoblastoma using DAB

**References:**

1. Retinoblastoma and retinocytoma (retinoma). Metz KA, et al. Pathologie. Nov;38(6):507-514, 2017.
2. Immunohistochemistry of apoptosis-related proteins in retinoblastoma. Natalino RJ, et al. Pathol Res Pract. Dec;212(12):1144-1150, 2016.
3. Expression of SIRT2 and SIRT6 in retinoblastoma. Orellana ME, et al. Ophthalmic Res. 53(2):100-8, 2015.