

OUR COMPANY



Köllemann GmbH

PROCESS TECHNOLOGY

- COMPANY

- More than 50 years experience in business
- 70 experienced employees from which most of them work here for more than 10 years
- Plant-layout, sales, engineering, project management, design, manufacturing and service is done in-house
- Customer oriented solutions, 100% tailor-made acc. to customers requirements
- Located Adenau, in the Eifel region in western Germany, 60km south of Cologne (Köln) and 45km west of Coblenz (Koblenz)
- Production area approx. 4.800m² with extended storage capabilities on our premises for intermediate storage of crates



- HISTORY

- 1965: Founding of the company named „Maschinenfabrik Adenau
- 1988: Renaming to A.J. Köllemann GmbH
- 2003: Building of the test-center for execution of experiments with all kinds of bulk-solids of our customers.
- 2004: Achievement of the ASME-Certificate for the production and design of pressure-vessels acc. to the „ASME Boiler and Pressure Vessel Code“.
- 2005: Expansion of the production hall which henceforth contains the companies biggest vertical boring and turning mill.
- 2007: Along with the financial crisis, Köllemann struggles with sales due to canceled projects and reduced investments.
- 2009: A group of investors joins, renaming to Köllemann GmbH.



- HISTORY

- 2010: Bachelor of Commerce Volker Kapteina joins the company and strengthens the management. His responsibility is within the commercial area.
- 2010: The aged PPS-system is replaced by an modern ERP-system with special auxiliaries to force an more effective production.
- 2011: Manufacturing of the thitherto worlds biggest coke-preheater (60 metric to/h) - the delivery takes place in Yunnan, China.
- 2011: The company receives its certificate acc. to ISO 9001:2008, because of the consequent use of the internal long-term QM-system this is done without major changes.



- HISTORY

- 2012: For reasons of age Dipl. Ing. Hans Josef Blumenkamp retires, Volker Kapteina is from now on the sole general manager.
- 2013: Re-certification for the production and design of pressure-vessels acc. to the „ASME Boiler and – Pressure Vessel Code sec. 8 div. 1“.



- OUR EMPLOYEES

- It's not just our products that make us a global leader in the fields of application we serve.

The most important resource is our employees, all of them.
Together we're share the same objective:

*Providing you with reliable, efficient, powerful products
that will improve your process and workflow.*



PROCESS TECHNOLOGY

Köllemann GmbH

- CLIENTS / PRODUCTS

Aluminium



PROCESS TECHNOLOGY

Köllemann GmbH

- CLIENTS / PRODUCTS

Polyolefins (HDPE / PP)

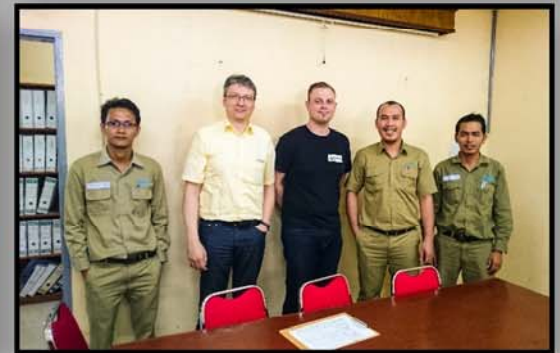


PROCESS TECHNOLOGY

Köllemann GmbH

- CLIENTS / PRODUCTS

Chemicals



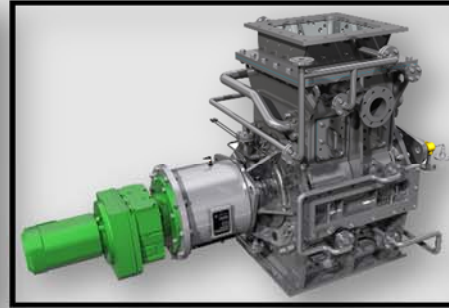
PROCESS TECHNOLOGY

Kölleman GmbH

Page 9 / 17

- CLIENTS / PRODUCTS

Power-Plants



PROCESS TECHNOLOGY
Köllemann GmbH

- CLIENTS / PRODUCTS

Raw-Materials (Ore, Cement etc.)



PROCESS TECHNOLOGY

Köllemann GmbH

- COUNTRIES

- ◆ Machines installed
- ◆ Representatives



- PRODUCTS

- **HDPE and PP Powder Mixers**

- Mixing length up to 12.000mm without intermediate bearings
- Capacity >60.000kg/h
- Complete cabinet for nitrogen supply



- **Screw-Conveyors**

- Pipe and U-Shape design
- Multi-Shaft design
- Adapted geometry for all products
- Various options available

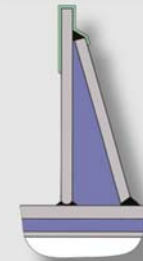
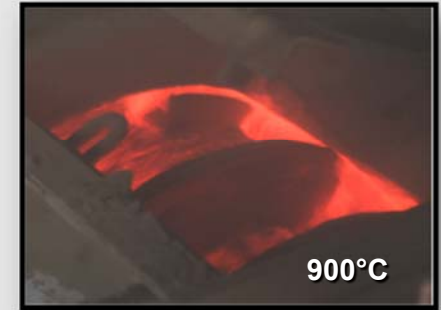
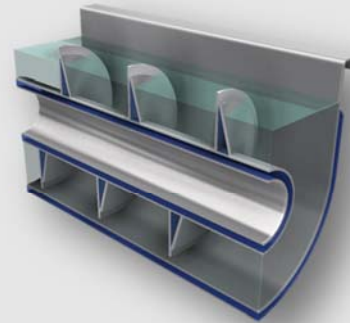


PROCESS TECHNOLOGY

Köllemann GmbH

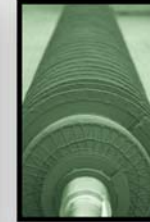
- PRODUCTS

- **Screw-Heat exchangers (cooling)**
 - Temperatures up to 1200°C
 - Hollow flight principle
 - Safe separation of bulk material and heat transfer medium
 - Single and multi-shaft design available
 - Free choice of heat transfer medium (water, steam, thermal oil, brine, freezing agent etc.)
 - Maximum capacity by active heat contacting
 - Process-room-pressure from 20mbar abs. up to 30 bar
 - Bulk-Solids(digest): ashes, activated coal, salts, sludge, cement, metal oxides, pyrolysis residues, cyanide granule
 - Various options (see specific brochure)



- PRODUCTS

- **Screw-Heat exchangers (Heating)**
 - Temperatures up to 450°C
 - Capacity up to 60to/h (from 5°C to 190°C)
 - Parameters and design features same as for the coolers
 - Suitable for heating and drying applications
 - Modular removable insulation covers
 - Bulk-Solids(digest): petcoke, silicone, coal, salts, sludge, organic materials, sand etc.
 - Pressure shock resistant design
 - ASME / AD2000 compliant
 - The worlds biggest preheaters are built by Köllemann
 - Various options (see specific brochure)

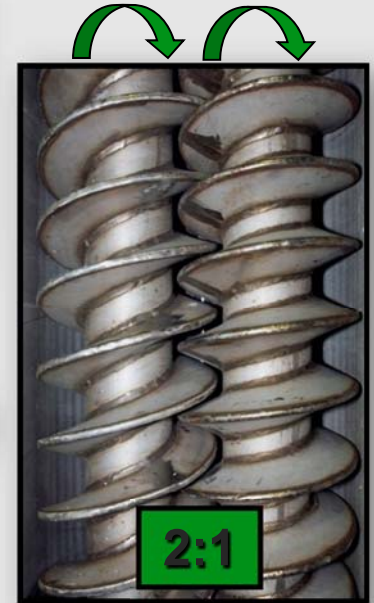


PROCESS TECHNOLOGY

Köllemann GmbH

- PRODUCTS

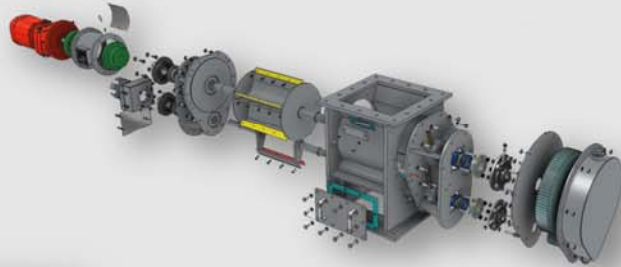
- Self-Cleaning Screw Heat Exchangers
 - Forced mechanical cleaning
 - High shear forces
 - Process safety
 - Heavy duty synchronization gear
 - 2:1 Shaft rotation ratio
 - Consistency up to cold petroleum jelly / silicone can be handled flawlessly
 - Clean surfaces ensure proper heat transport
 - Various options (see specific brochure)



- PRODUCTS

▪ Rotary Valves

- Pressure-Shock resistant
- Wide range of materials available
- Forced cleaning (Self-cleaning)
- Wide choice of shaft-sealing-types (acc. to process conditions)
- Water-cooling of all surfaces in contact with the product in high-temperature-areas
- Replaceable wear sleeve for surface protection inside the housing against wear
- Various options (see specific brochure)



ZS DN2300

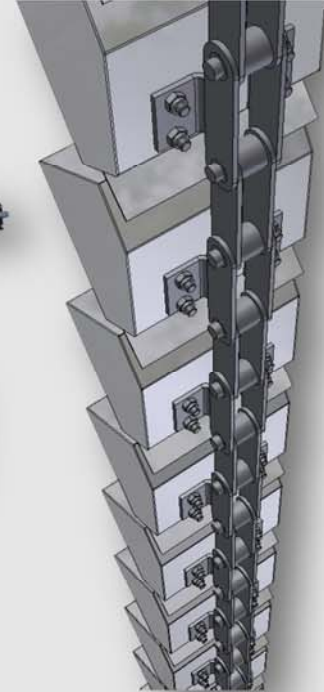
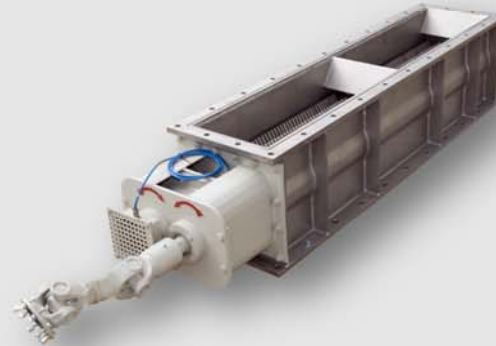
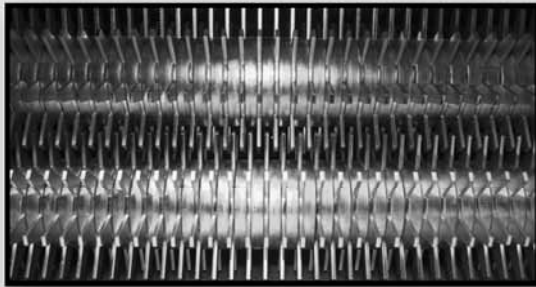


PROCESS TECHNOLOGY

Köllemann GmbH

-PRODUCTS

- Slide Gate Valves, Lump Breakers, Bucket Elevators
 - Wide range of materials available
 - Suitable for any product
 - Pressure tight
 - Safe handling of toxic products
 - Safe separation of product rooms (Slide Gates)
 - All customary in the market available kinds of steel available
 - Fully customized design



PROCESS TECHNOLOGY

Köllemann GmbH

Page 18 / 17

- HOW TO FIND US

- Our Address is:
 - Köllemann GmbH
 - Street: Am alten Wehr 9-12
 - City: 53518 Adenau

- GPS Coordinates:
 - 50°23'19.7"N 6°55'17.4"E


If you need any assistance in planning your trip, we appreciate helping you.



PROCESS TECHNOLOGY

Köllemann GmbH

- CERTIFICATES



CERTIFICATE OF AUTHORIZATION

The named company is authorized by the American Society of Mechanical Engineers (ASME) for the scope of activity shown below in accordance with the applicable rules of the ASME Boiler and Pressure Vessel Code. The use of the certification mark and the authority granted by this Certificate of Authorization are subject to the provisions of the agreement set forth in the application. Any construction stamped with this certification mark shall have been built strictly in accordance with the provisions of the ASME Boiler and Pressure Vessel Code.

COMPANY:
Koellermann GmbH
 Am alten Wehr 9-12
 Adenau 53518
 Germany


SCOPE:
 Manufacture of pressure vessels at the above location only

AUTHORIZED: March 26, 2013
EXPIRES: March 26, 2016
CERTIFICATE NUMBER: 44,490

Bygn A. Holt
 Vice President, Conformity Assessment

Joachim W. J. J.
 Director, Conformity Assessment

The American Society of Mechanical Engineers



ASME (Pressure-Vessel Section 8)

Certificate

Standard **ISO 9001:2008**

Certificate Registr. No. 01 100 110157

Certificate Holder:



Kolleermann GmbH
 Am alten Wehr 9-12
 D - 53518 Adenau

Scope: Distribution, Engineering and Manufacturing of Handling and Process Technology

Proof has been furnished by means of an audit that the requirements of ISO 9001:2008 are met.

The due date for all future audits is 09-02.

Validity: The certificate is valid from 2014-09-05 until 2017-09-04.
 First certification 2011

2014-08-21



J. W. J.
 TÜV Rheinland Cert. Center
 Koblenz, 11-15, Köln



www.tuv.com



Precisely Right.

ISO 9001:2008

Certificate

Qualification of a production site for the manufacture of pressure equipment

Certificate No.: 01 202 642/P-85022900

Name and address of manufacturer: **Kolleermann GmbH**
 Am Alten Wehr 9-12
 53518 Adenau
 Germany

It is hereby certified that the manufacturer has furnished proof of the quality requirements for their welding production and also has experience in piece production in accordance with Directive 97/23/EC.

Specification: AD 2000-Merkblatt HPV / DIN EN ISO 3834-2 or 3
Test Report No.: 01 202 362/A-14 0212/Rev. 00
Scope: **Manufacture of containers**
Production Sites: Kolleermann GmbH
 Am Alten Wehr 9-12
 53518 Adenau
 Germany
 October 2017

Valid until:

Koblenz, 2014-11-17 Dipl.-Ing. Zöpp



www.tuv.com



Precisely Right.

AD2000 / HPV



- CONTACT

■ Köllemann GmbH

Am alten Wehr 9-12

D-53518 Adenau

Germany

Phone: +49 2691 308 0

Fax: +49 2691 308 90

Email: info@koellemann.de

Web: <http://www.koellemann.de>

Facebook: <https://www.facebook.com/koellemanngmbh/>

